



GEOSEARCH LOGGING INC.

Scale 1:240 (5"=100') Imperial
Measured Depth Log

Well Name: Gould 2240H
 Location: Upshur, Co, West Virginia
 License Number: 47-097-03739
 Spud Date: 10/01/2010
 Surface Coordinates: Lat: 39.0797
 Long: -80.2801
 Bottom Hole Coordinates: Lat: 39.0797
 Long: -80.2801
 Ground Elevation (ft): 1,200' K.B. Elevation (ft): 1,216'
 Logged Interval (ft): 2,800' To: 6,640' Total Depth (ft): 3,840'
 Formation: Marcellus
 Type of Drilling Fluid: Air drilling, Oil-based mud

Region: APPALACHIA
Drilling Completed: 10/19/2010

Printed by STRIP.LOG from WellSight Systems 1-800-447-1534 www.WellSight.com

OPERATOR

Company: XTO ENERGY
 Address: 600 E. Exchange Avenue
 Fort Worth, TX 76164

GEOLOGIST

Name: Kelley Hartley, Tim Barfield, Michael Marshall, Noah Sluiter
 Company: Geosearch Logging, Inc
 Address: P.O. Box 6005
 Edmund, OK 73083-6005
 (403) 340-5545

Comments

2 Manned Logging Service
 Start logging Date: 10/05/2010
 OBM start date: 10/11/2010
 Released Logging Date: 10/19/2010
 Drilling Contractor: UDI#209
 PC 149, ML126,HASP: V #21, H: 33

ROCK TYPES

Anhy
 Bent
 Brec
 Cht
 Clyst
 Coal
 Congl

Dol
 Gyp
 Igne
 Lmst
 Meta
 Mrlst
 Salt

Shale
 Shcol
 Shgy
 Sltst
 Ss
 Till
 Sandstn

Siltstn
 Granwash
 Dolowash
 Cement
 Granite
 Hotshale

Bit#4. Smith- Hammer
 @2,787'. Size: 8.75". Serial#
 PS0890 Type: F47HY

ROP (min/ft) 2.5
 Gamma (API) 150
 WOB: 16k
 PP: 405
 RPM: 45

M dialed to 1.83

WOB: 18k
 PP: 376
 RPM: 45

2800

2850

2900

2950

STARTING FORMATION: 5TH

FORMATION SAMPLES @ 2,800' WITH
 30' SPOT SAMPLES

SH: lt gy-gy, frm-sli hd, hd ip,
 amorph-blky, plty ip, n calc, micmica ip;
 SLTST: gy, med gy ip, sli hd-frm, n-vry sli
 calc, micmica, tr fn pyr

SLTST: gy, sli hd, hd/frm ip, n-vry sli calc,
 micmica, tr fn pyr; SH: gy-lt gy, frm-sli hd,
 hd ip, amorph-blky, plty ip, n calc,
 micmica ip; tr SS

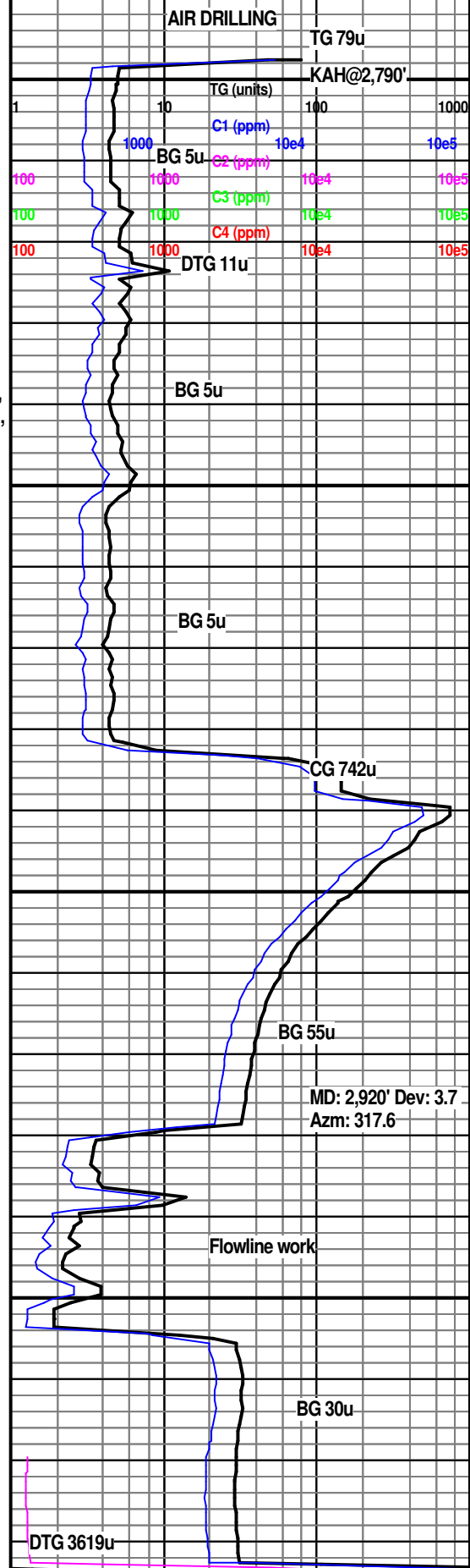
SH: lt gy-gy, frm-sli hd, hd ip,
 amorph-blky, plty ip, n calc, micmica ip;
 SLTST: gy, sli hd, frm-hd ip, n-v sli calc,
 micmica, tr fn pyr

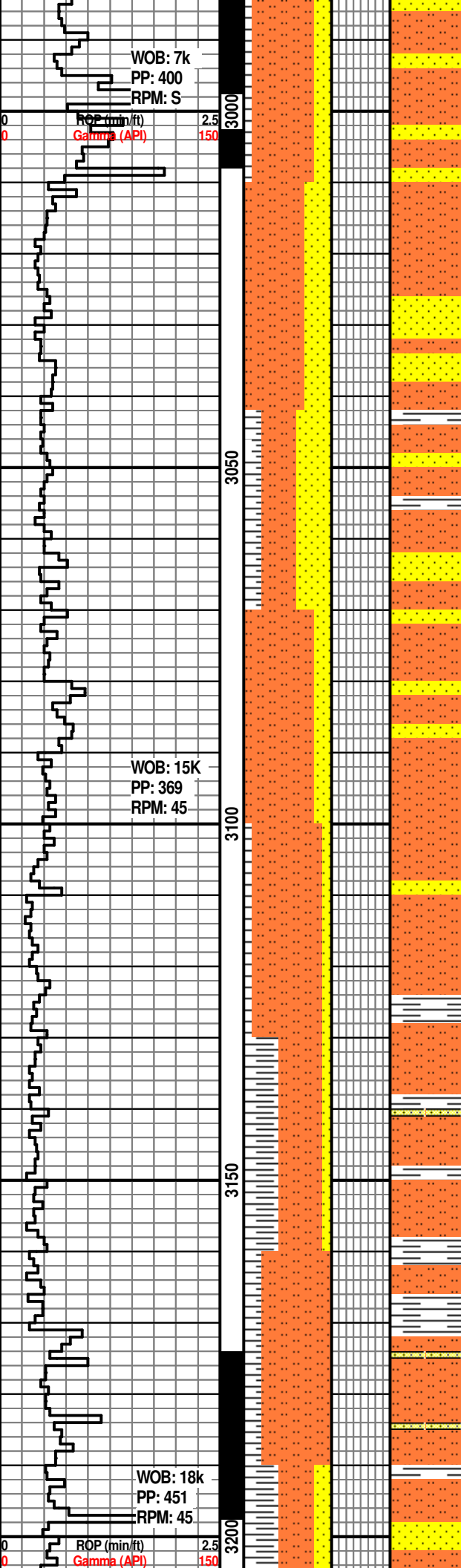
SH: lt gy-gy, frm-sli hd, hd ip,
 amorph-blky, plty ip, n calc, micmica ip;
 SLTST: lt gy-gy, frm, tr hd, n-v sli calc,
 micmica, tr fn pyr

SH: lt gy-gy, frm-sli hd, hd ip,
 amorph-blky, plty ip, n calc, micmica ip,
 slty, v slty ip; SLTST: lt gy-gy, frm, hd ip,
 n calc, micmica, tr fn pyr

**SPEECHLEY TOP @
 2,950'MD**

SLTST: lt gy-gy, sli frm-frm, sli hd-hd ip,
 n-v sli calc, micmica, tr fn pyr; SS: lt
 gy-gy, off wht ip, v fn gr, p-mod srt, sb
 ang-sb rnd, sli hd-hd, fri ip, n calc,
 micmica, fn pyr ip





SLTST: lt gy-gy, sli frm-frm, n calc; SS; lt gy-gy, v fn gr, p-mod srt, sb ang-sb rnd, sli hd, n calc; SH: lt gy-gy, frm-sli hd, amorph, n calc, slty, v slty ip

SLTST: lt gy-gy, sli frm-frm, n calc; SS; lt gy-gy, off wht ip, v fn gr, p-mod srt, sb ang-sb rnd, sli hd, n calc; rr SH

SLTST: gy -med gy, sli frm-frm, calc-sli calc, micmica; SS; lt gy-off wht, v-fn gr, p-mod srt, sb ang-sb rnd, sli hd, calc cmt; SH: med lt gy, gy ip, frm-sli hd, sli frm ip, sli calc, micmica, tr fn pyr; tr LS/ calc cxls

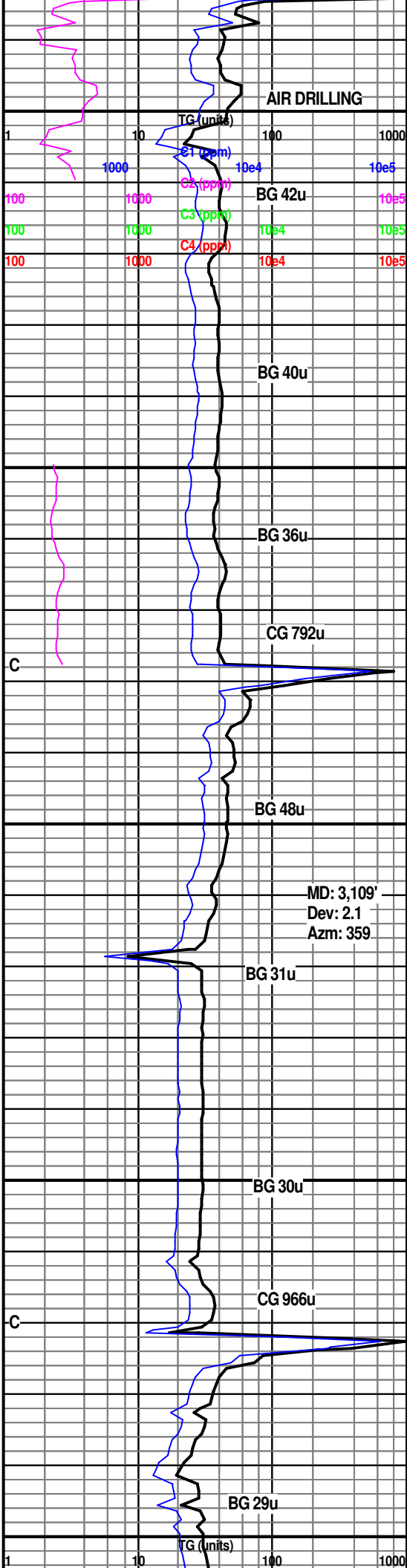
SLTST: gy-med gy, lt gy ip, sli frm-frm, n-sli calc, micmica; SS; lt gy-gy, v fn gr, p-mod srt, sb ang-sb rnd, sli hd, calc/silc cmt

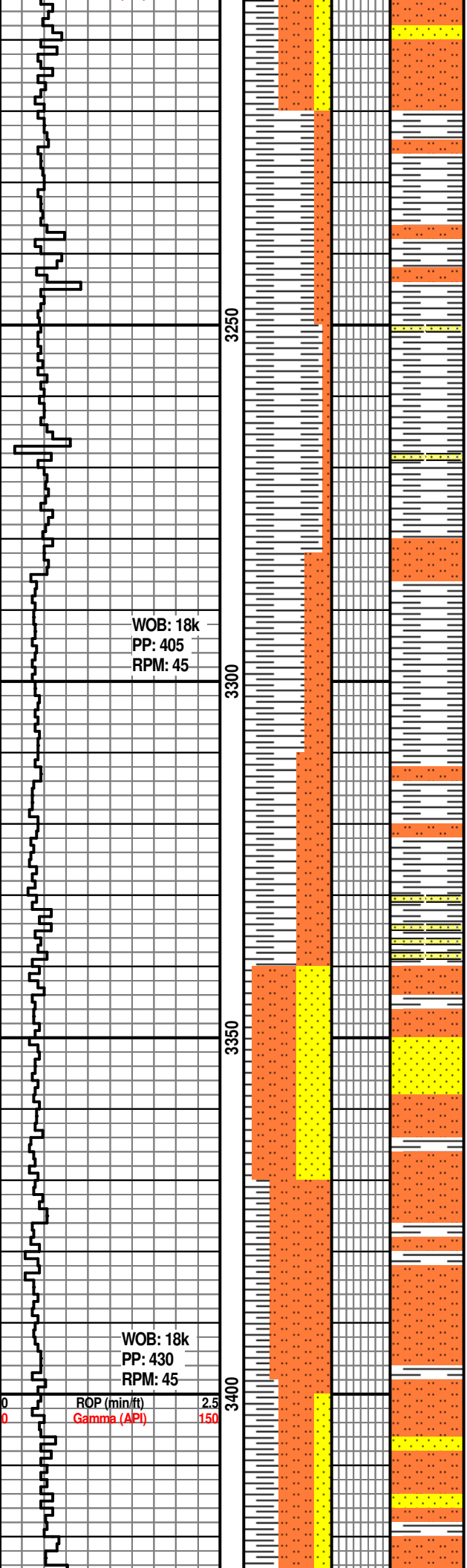
SLTST: lt gy-gy, sli frm-frm, n calc, micmica; SS: lt gy-gy, v fn grn, p-mod srt, sbang-srnd, sli hd, silc cmt; SH: med lt gy, gy ip, sli frm-frm, n calc, micmica

SLTST: lt gy-gy, sli frm-frm, n calc; SH: med lt gy, gy ip, frm-sli frm, n calc; SS: off wht-lt gy, v fn gr, p-mod srt, sb ang-ang, sli hd, silc cmt

SLTST: lt gy-gy, sli frm-frm, n calc, fn pyr ip; SH: lt gy-gy, frm-sli frm, n calc; rr SS

SLTST: lt gy-gy, sli frm-frm, n-sli calc; SS: wht-lt gy, vf gr, p-mod srt, sb ang-sb





rnd, sli hd, sli/calc cmt; SH: med lt gy, gy ip, sli frm- frm, n calc

SH: lt-med gy, gy ip, sli frm- frm, n calc, micmica; SLTST: lt gy-gy, sli frm- frm, n-sli calc, micmica, f pyr ip

SH: lt-med gy, gy ip, sli frm- frm, n calc, micmica, slty, v slty ip; SLTST: lt gy-gy, sli frm- frm, n-sli calc, micmica, f pyr ip

SH: lt gy-gy, dk gy ip, sli frm- frm, n cal, micmica, slty, v slty ip; SLTST: med-dk gy, sli frm- frm, n-sli calc, micmica, f pyr ip

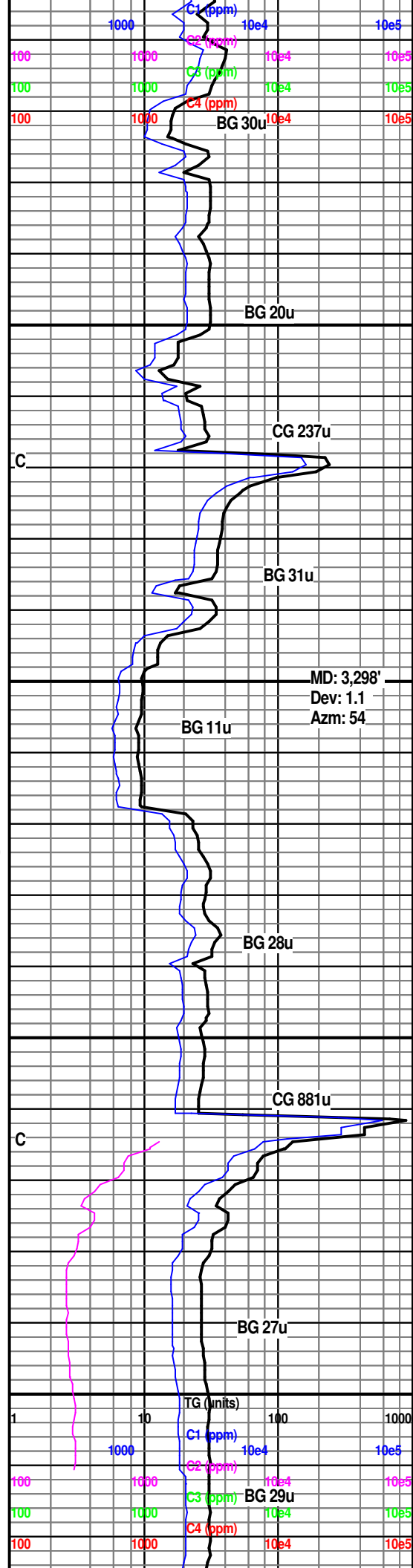
SH: lt gy-gy, sli frm- frm, n calc, micmica, slty, v slty ip; SLTST: lt- med gy, dk gy ip, sli frm- frm, n-sli calc, micmica, f pyr ip

BALLTOWN SANDS TOP @ 3,340'MD

SLTST: dk gy, lt gy, sli frm- frm, sli calc-calc, calc incl; SS: wht- off-wht, vf gr, p-mod srt, sb ang-sb rnd, sli hd, calc cmt; SH: med gy, sli frm- frm, n-sli calc; calc xls ip

SLTST: lt gy-gy, sli frm- frm, sli calc; SH: lt-med gy, sli frm- frm, n-sli calc

SLTST: lt gy-gy, sli frm- frm, sli calc-calc; SS: wht-off wht, vf gr, p-mod srt, sb ang-sb rnd, sli hd, calc cmt; SH: gy, sli frm- frm, n-sli calc; rr LS

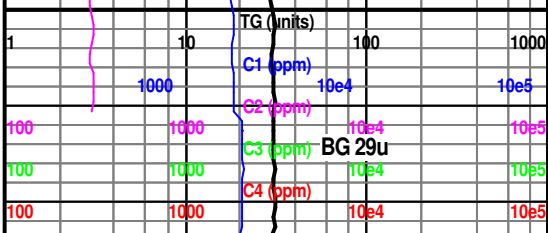


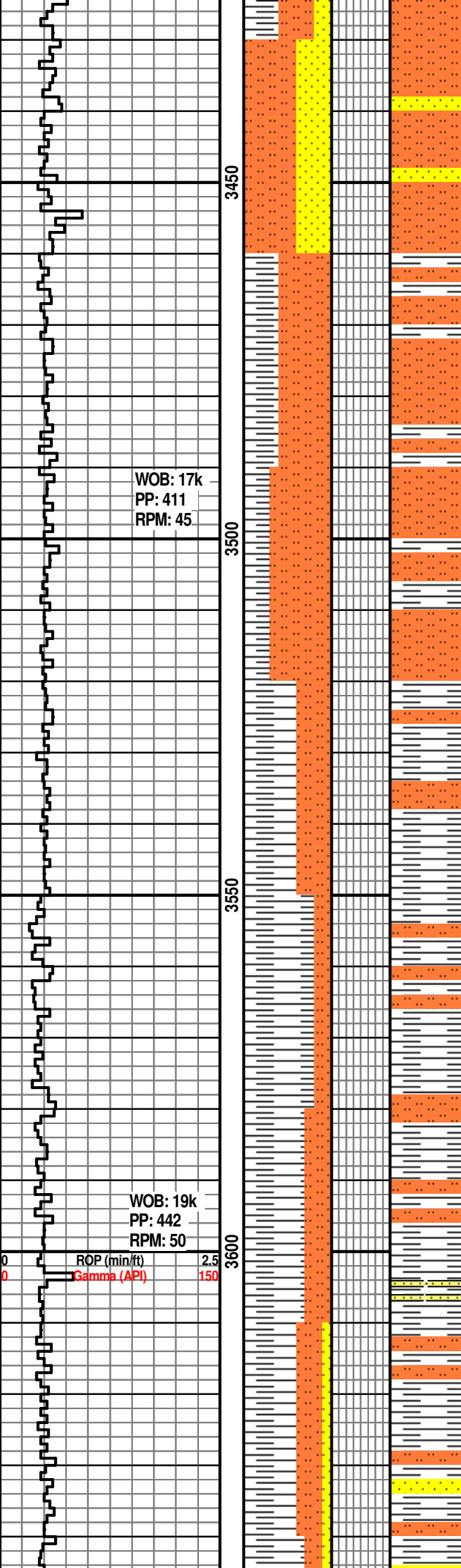
WOB: 18k
PP: 405
RPM: 45

WOB: 18k
PP: 430
RPM: 45

ROP (min/ft) 2.5
Gamma (API) 150

MD: 3,298'
Dev: 1.1
Azm: 54





SLTST: lt gy-gy, sli frm- frm, sli calc-calc;
SS: wht-off wht, frm ip, p srt, sb ang, fri,
vf gr, calc cmt, arg, f pyr ip

SLTST: lt gy-gy, sli frm-frm, sli calc-calc,
micmica, tr f pyr; SH: gy-med gy, sli frm-
frm, n-sli calc

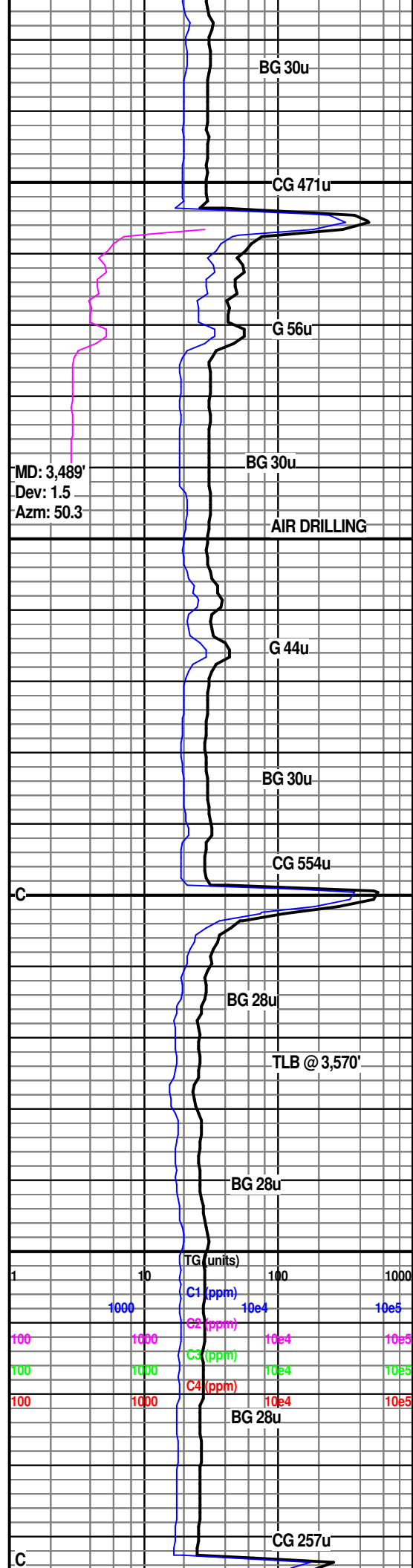
SLTST: lt gy-gy, sli frm- frm, sli calc-calc,
micmica, tr f pyr, calc incl ip; SH: gy-med
gy, sli frm- frm, n-sli calc, calc xls i

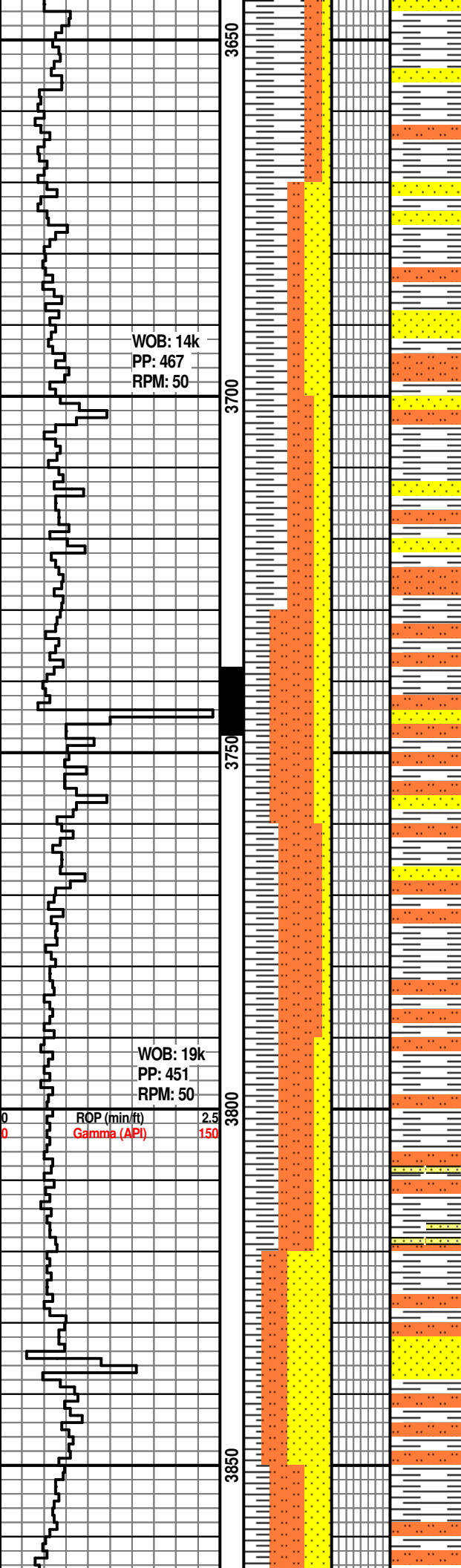
SH: gy-med gy, sli frm- frm, n-sli calc,
sly-v slty, micmica, f pyr; SLTST: lt
gy-gy, sli frm- frm, n calc, micmica, tr f
pyr

SH: gy, dk gy, blk, bnd, dull
SLTST: lt gy-gy, sli frm- frm, n calc

SH: gy, dk gy, blk, bnd, dull, tr SS;
SLTST: lt gy-gy, sli frm-frm, n calc

SH: gy, dk gy, blk, bnd, dull
SS: gy, dk gy, consol, vf gr, tr dk brn, sb
rnd-sb ang





SH: gy, dk gy, blk, bnd, dull
SS: gy, dk gy, consol, vf gr, tr dk brn, sb
rnd-sb ang, tr calc

SS: gy, dk gy, consol, vf gr, tr dk brn, sb
rnd-sb ang, tr calc
SLTST: lt gy-gy, sli frm-frm, n calc

SS: gy, dk gy, consol, vf gr, tr dk brn, sb
rnd-sb ang, tr calc
SLTST: lt gy-gy, frm-hd

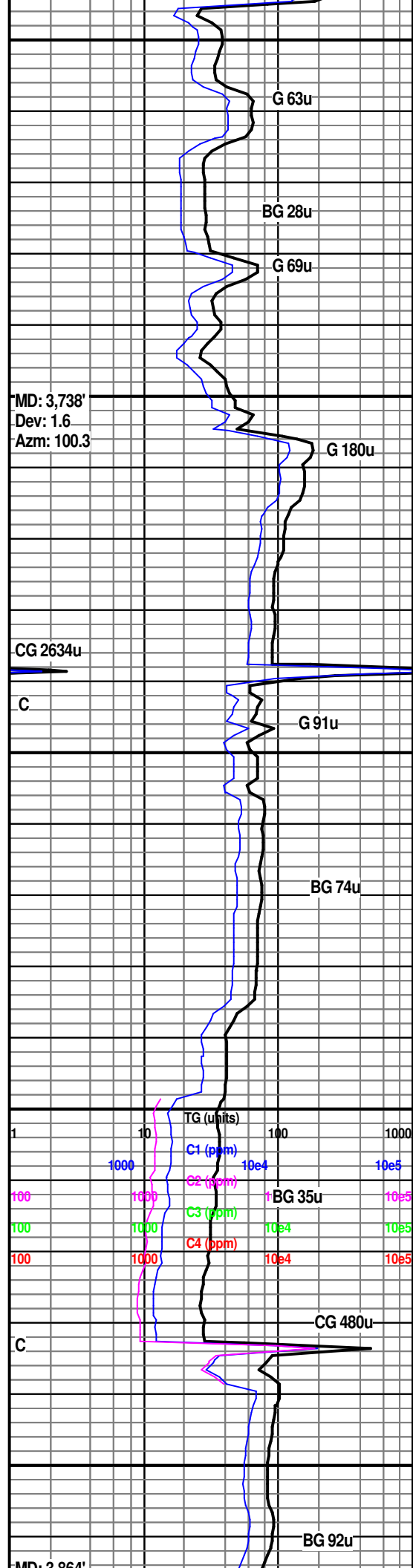
SLTST: gy, dk gy, tr dk rd-brn, hd, blk, tr
pty, slty

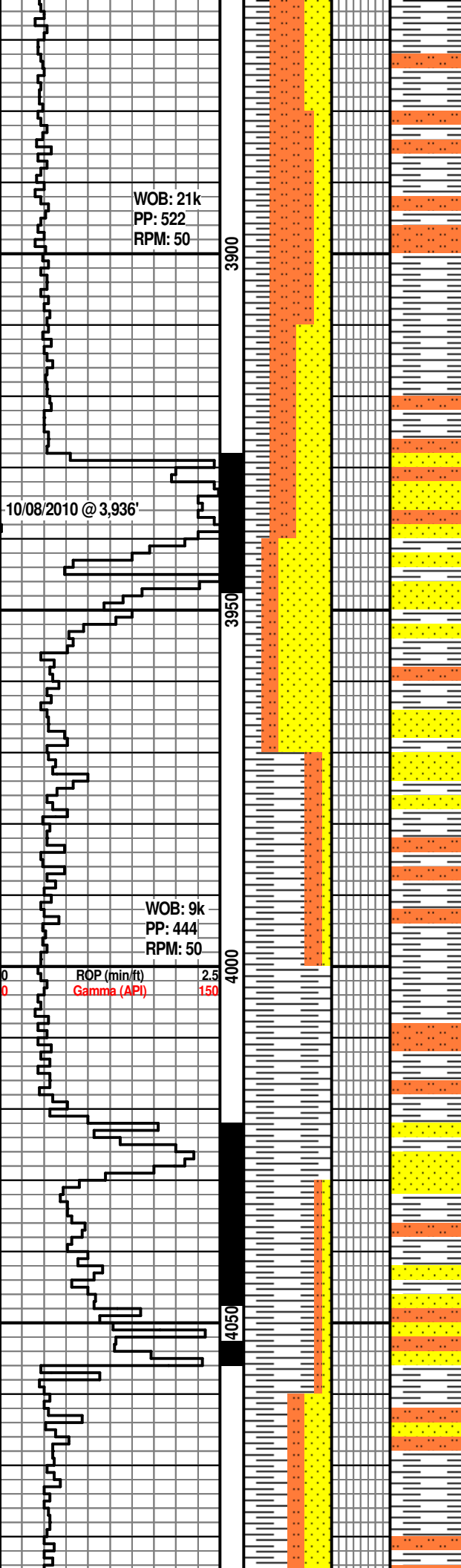
SH: gy, dk gy, blk, bnd, dull
SS: gy, dk gy, consol, vf gr, tr dkbrn, sb
rnd, sb ang

SS: gy, dk gy, consol, vf gr, sb rnd-sb
ang, tr calc
SLTST: gy-lt gy, frm-hd

SS: gy, lt gy, tr rk gry, wl consol, vf gr, sb
ang, sb rnd, tr rnd, vit, tr sm, srt

SS: gy, dk gy, consol, vf gr, sb rnd-sb
ang, tr calc
SLTST: gy-lt gy, frm-hd





ang, vit, SLTST: gy-lt gy, mfrhd

SH: gy, dk gy, blk, bnd, dull;
SS: gry, wl consol, vf gr, sb rnd, sb ang
vit, tr sm

SS: gy, v lt gy, wl consol, vf gr, sb ang-sb
rnd, tr, sm, vit, srt, sil cmt

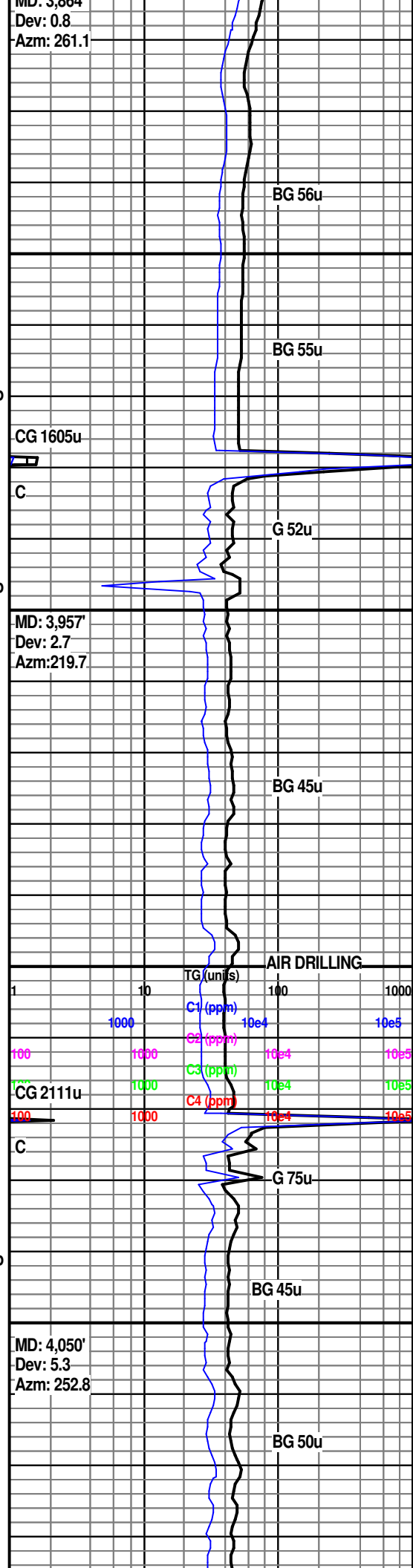
SS: gy, v lt gy, wl consol, vf gr, sb ang-sb
rnd, sm, vit, srt, sil cmt

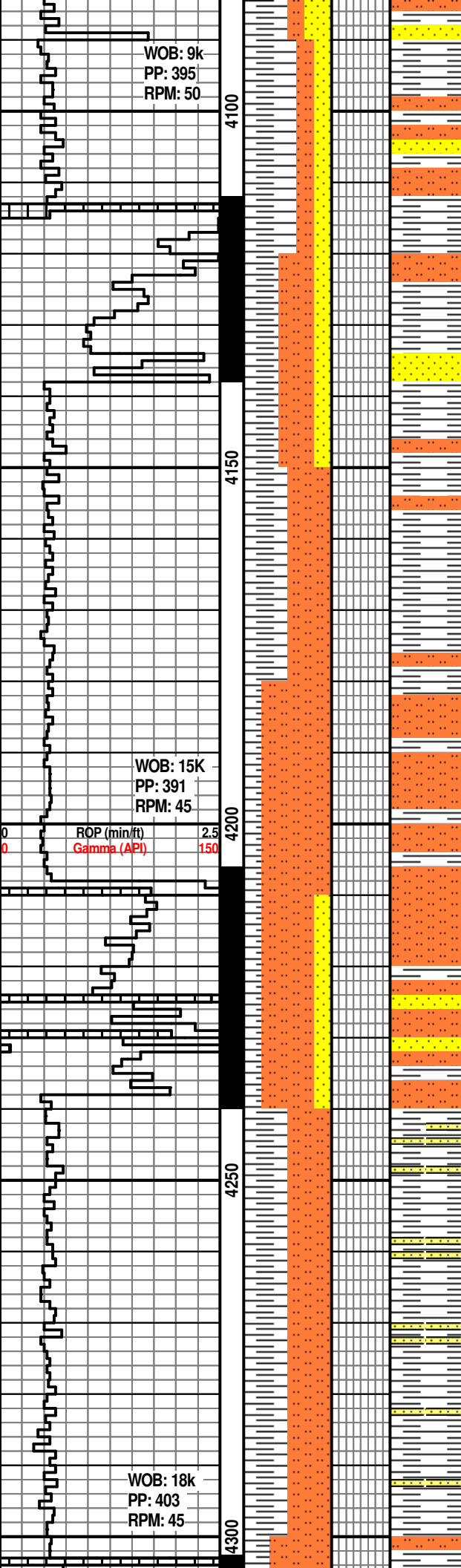
SH: gy, dk gy, m frm-hd, blk, bnd, dull;
SLTST: gy-lt gy, frm-hd

SH: gy, dk gy, sli frm-hd, blk, bnd, dull

SLTST: gy-lt gy, frm-hd
SS: gy, v lt gy, wl consol, vf gr, sb ang-sb
rnd, sm, vit, srt, sil cmt

SS: dk gy, dk rd brn, wl consol, vf gr, sb
ang, tr sb rnd, vit, sm, wl srt, tr arg





SS: dk gy, dk rd brn, wl consol, vf gr, sb ang, tr sb rnd, vit, sm, wl srt, tr arg

SS: dk gy, dk rd brn, wl consol, vf gr, sb ang-sb rnd, vit, sm, wl srt, arg

SLTST: med lt gy, sli frm-frm, sli calc micmica, f pyr ip; SH: med gy, sli frm-frm, n-sli calc

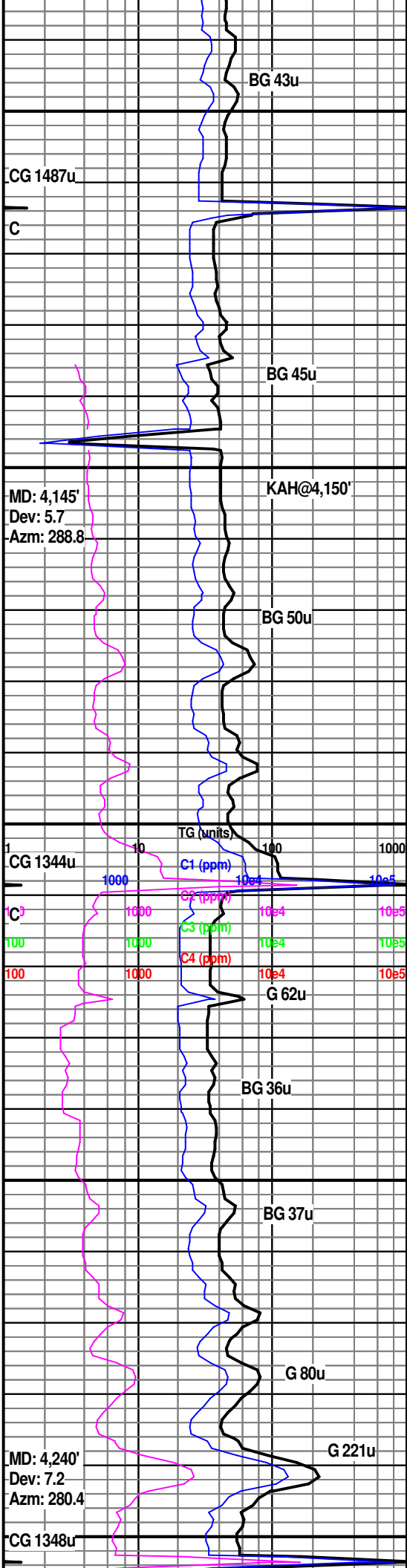
SLTST: med lt gy, sli frm-frm, amorph, sli calc micmica, f pyr ip; SH: med gy, frm-sli frm, amorph-blky, n-sli calc, slty-v slty

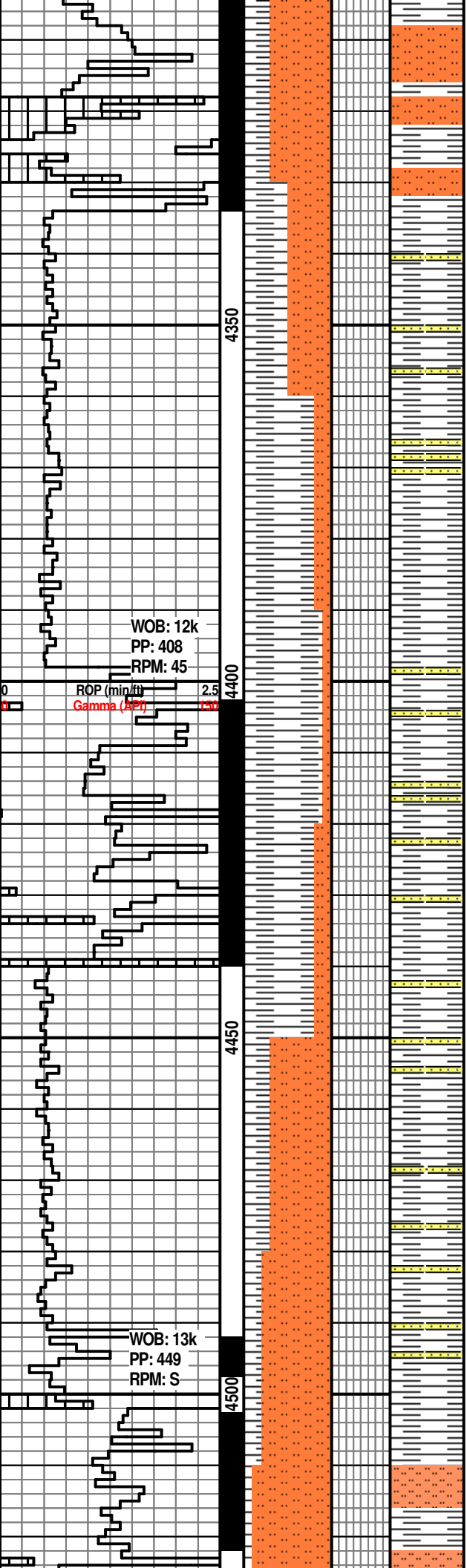
SLTST: gy-lt gy, sli frm-frm, blky-amorph, sli calc, micmica; SH: gy-lt gy, frm-sli hd, plty-blky, amorph ip, n calc, micmica ip, tr f pyr; SS: off wht-gy, sli hd, vf gr, p-mod srt, sb ang-sb rnd, calc cmt

SH: gy-lt gy, frm-sli hd, amorph, n calc, micmica ip, f pyr ip, slty-v slty; SLTST: gy-lt gy, frm-sli frm, amorph-blky, n calc, micmica

SH: gy-lt gy, sli hd-hd, amorph, blky ip, n calc, micmica ip, f pyr ip, slty-v slty; SLTST: gy-lt gy, hd, sli hd, v hd ip, amorph, n calc, micmica

SLTST: med gy, prl-brn ip, hd-v hd, sli hd





ip, blk-orph, n-sli calc, calc ip, micmica, f pyr; SH: lt gy, sli hd-hd, blk-orph, n calc, micmica ip, f pyr ip, slty-v slty

SH: med-dk gy, lt gy ip, brn ip, sli hd, blk-orph, n calc, micmica ip, slty; SLTST: brn, prl-brn ip, med gy ip, sli hd-hd, amorph, platy-blky ip, sli calc, rr calc, micmica, f pyr

SH: gy, lt gy ip, frm-sli hd, amorph, n calc, micmica, slty, v slty ip; SLTST: brn ip, med gy ip, sli hd blk-orph, n calc, micmica, f pyr

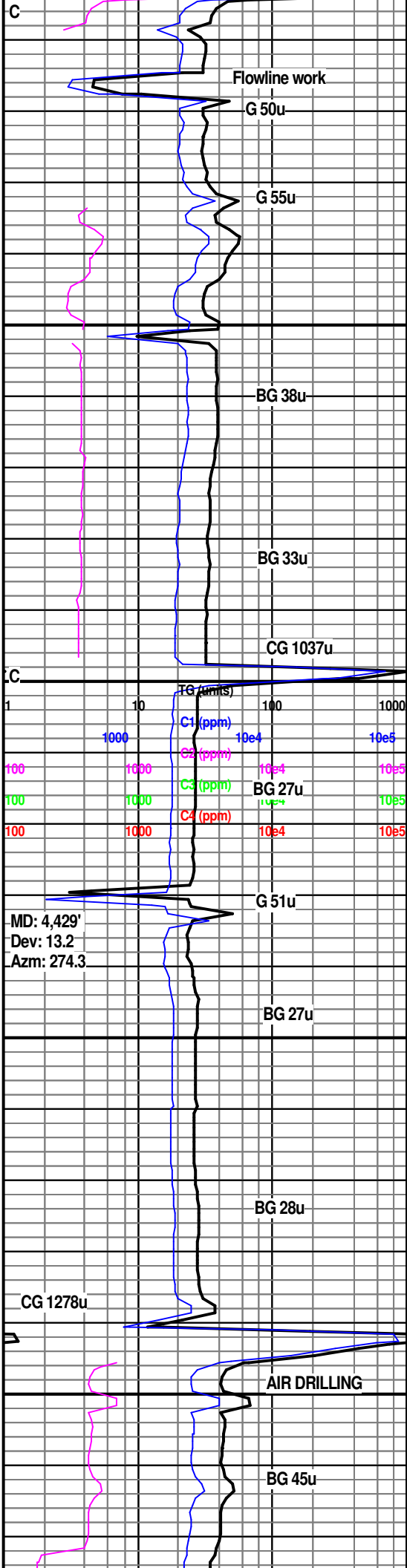
SH: gy- lt gy, frm-sli hd, pred amorph, platy-blky ip, n-v sli calc, micmica, slty-v slty; SLTST: med gy- gy, sli hd, blk, amorph ip, sli calc-calc, micmica, f pyr

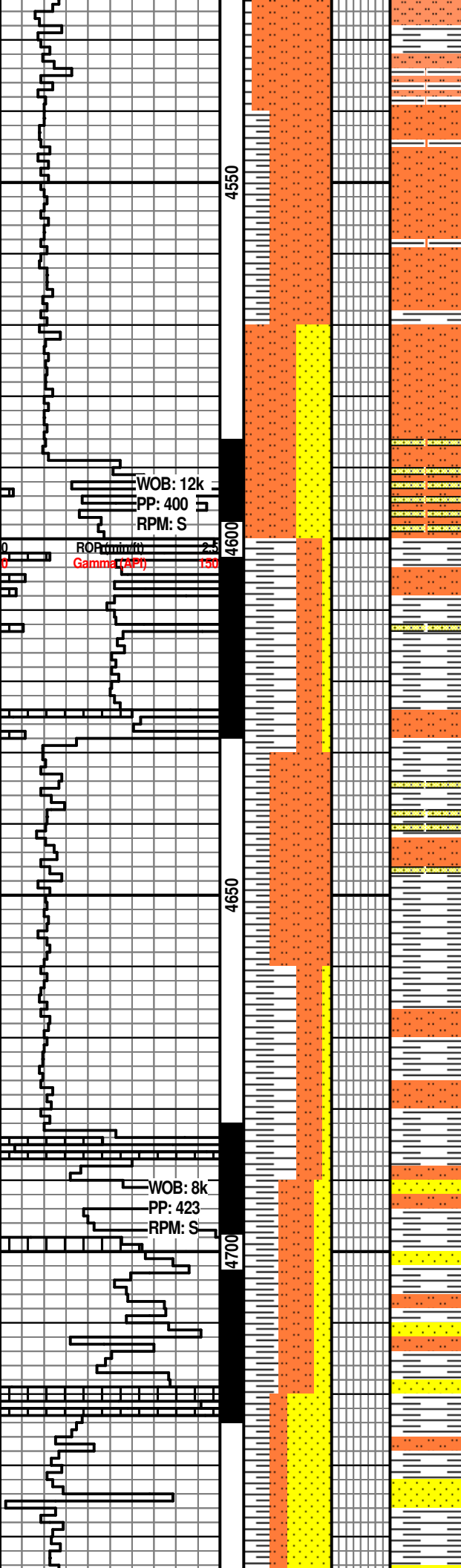
SH: gy, brn ip, sli frm-frm, amorph, n calc, micmica f pyr ip, slty ip; SLTST: med gy-gy, brn ip, sli frm-frm, blk-orph, pred n calc, sli calc, micmica, f-pp pyr ip

SLTST: brn, prl brn ip, sli frm-frm, blk-orph, tr plty ip, pred n calc, sli calc, micmica, f-pp pyr ip; SH: gy-lt gy, sli frm-frm, plty-amorph, tr blk, n calc, micmica, f pyr ip, slty ip

SLTST: brn-prl brn, sli hd, amorph, sli calc, n calc ip, micmica, f pyr ip; SH: lt gy, frm-sli hd, amorph, n calc

SLTST: brn, sli hd, amorph, n-v sli calc, micmica, f pyr ip; SH: lt gy, frm-sli hd, amorph, n calc, micmica, fn pyr ip, v slty





ip

SLTST: lt gy, v lt blu ip, frm-sli hd, sli frm ip, amorph, n-v sli calc, micmica, f pyr ip; SH: lt gy, sli hd-hd, amorph, blkyp ip, n calc, slty, v slty ip

SLTST: gy-lt gy, sli frm-frm blkyp-amorph, sli calc-calc, micmica, f pyr; SS; v lt gy-gy, v-f gr, med gr ip, pred p srt, m-w srt ip, sb rnd-sb ang, rnd ip, sli hd-hd, calc cmt

SH: lt gy, sli frm-frm, sli hd ip, plty-blky, n calc, slty; SLTST: gy-lt gy, frm-sli frm, blkyp, n-sli calc; tr SS; gy, v f gr, m-p srt, sb rnd-sb ang, sli hd, silc cmt

SLTST: gy-lt gy, brn ip, frm-sli hd, blkyp-amorph, n calc, sli calc ip; SH: lt gy, sli frm-frm, sli hd ip, plty-blky, n calc, slty

SLTST: gy-lt gy, brn ip, frm-sli hd, blkyp-amorph, n calc, sli calc ip; SH: lt gy, sli frm-frm, sli hd ip, plty-blky, n calc, slty

SS: lt gy, consol, vf gr, sb rnd, tr sb ang, vit, sm, srt, tr arg
SLTST: dk gy, frm-v hd, vf gr

SS: lt gry, consol, vf gr, sb rnd, tr sb ang, vit, sm, srt, tr arg
SLTST: dk gy, frm-v hd, vf gr

MD: 4,523'
Dev: 15.0
Azm: 74.3

BG 39u

BG 38u

CG 1023u

C

BG 31u

MD: 4,618'
Dev: 17.4
Azm: 270.4

BG 32u

BG 33u

CG 1523u

C

TLB @ 4690

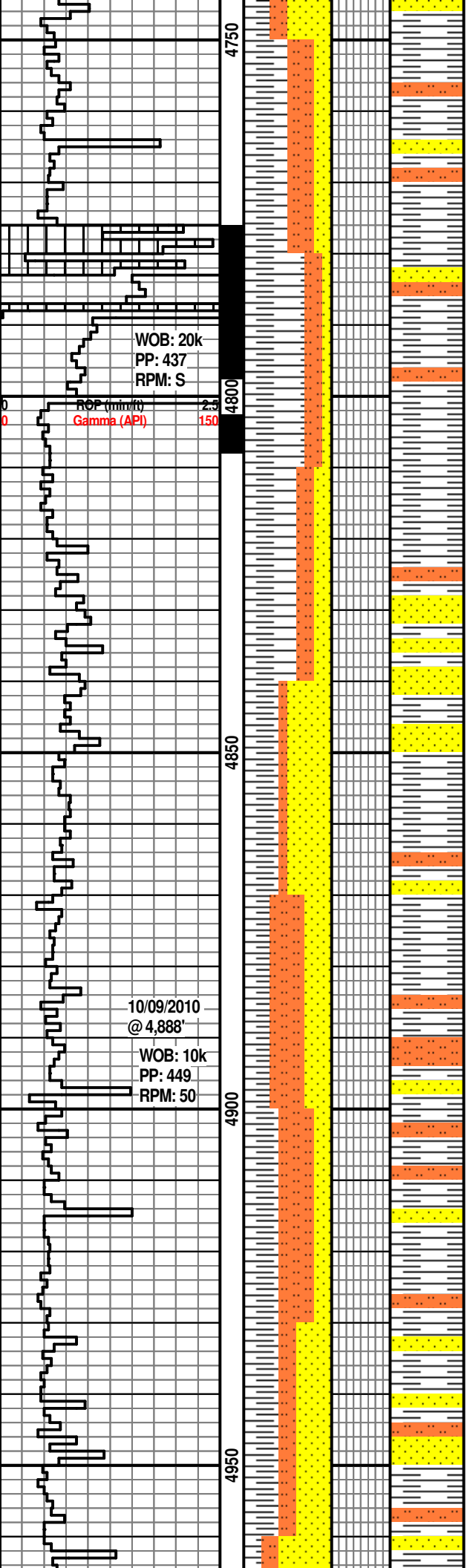
BG 38u

G 57u

MD: 4,714'
Dev: 19.4
Azm: 267.0

G 57u

BG 37u



SH: gy, dk gy, tr lt gy, m frm-v hd, amorph, blk, bnd, dull, tr rthy

SH: gy, dk gy, tr lt gy, m frm-v hd, amorph, blk, tr plty, bnd, dull, tr rthy, pyr inc

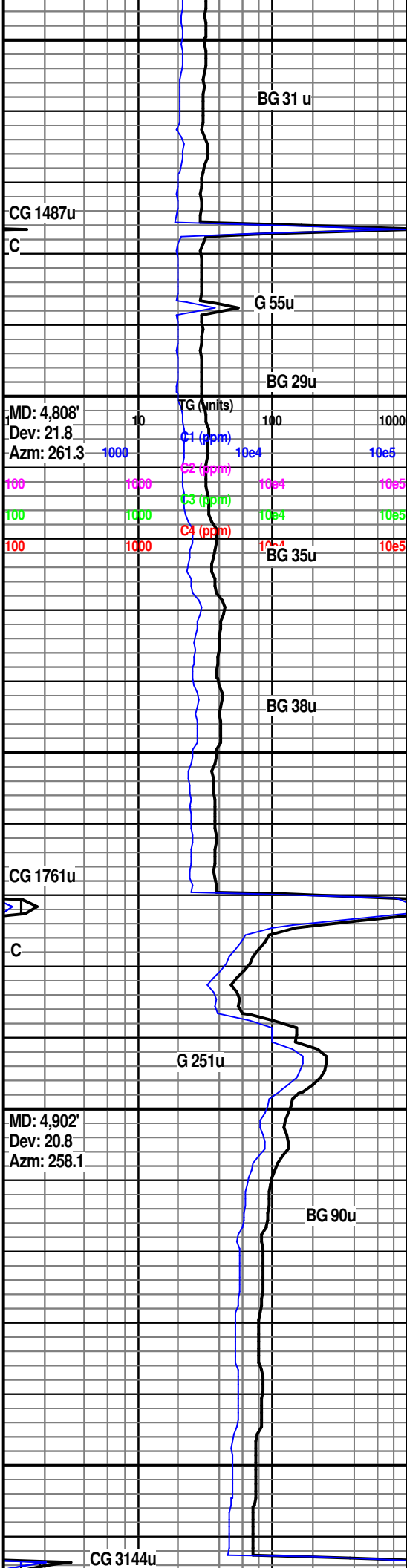
SH: gy, tr lt gy, sft-frm, blk, tr plty, bnd, dull, tr rthy

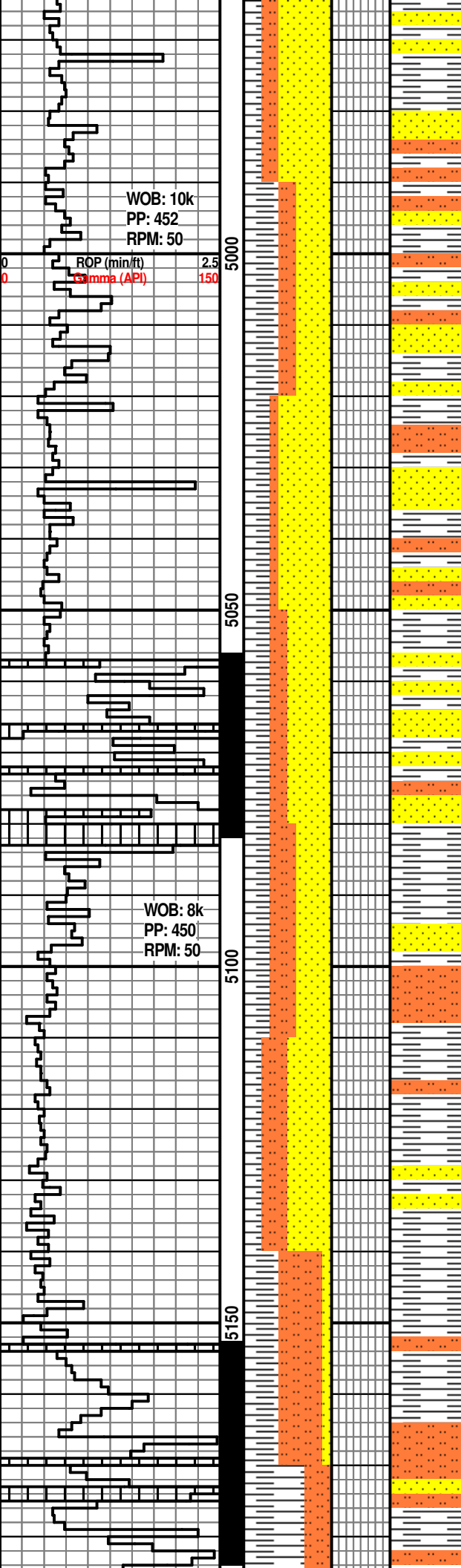
SS: gy, lt gy, wl consol, vf gr, sb ang, sb rnd, sm, srt

SLTST: gy-lt gy- brn, frm-sli hd, blk, n calc, SH: lt gy, frm-sli frm, plty-blk, n calc

SS: gy, lt gy, wl consol, vf gr, sb ang, sb rnd, sm, srt
SLTST: dk gy, tr gy-brn, m consol, blk, slty

SS: gy, lt gy, wl consol, vf gr, sb ang, sb rnd, sm, srt





SS: gy, lt gy, wl consol, vf gr, sb ang, sb rnd, sm, srt
SLTST: dk gy, tr gy-brn, m consol, blk, slty

SS: gy, lt gy, wl consol, vf gran, sb ang, sb rnd, sm, vit, srt

SS: ry, lt gy, wl consol, vf gran, sb ang, sb rnd, sm, vit, srt

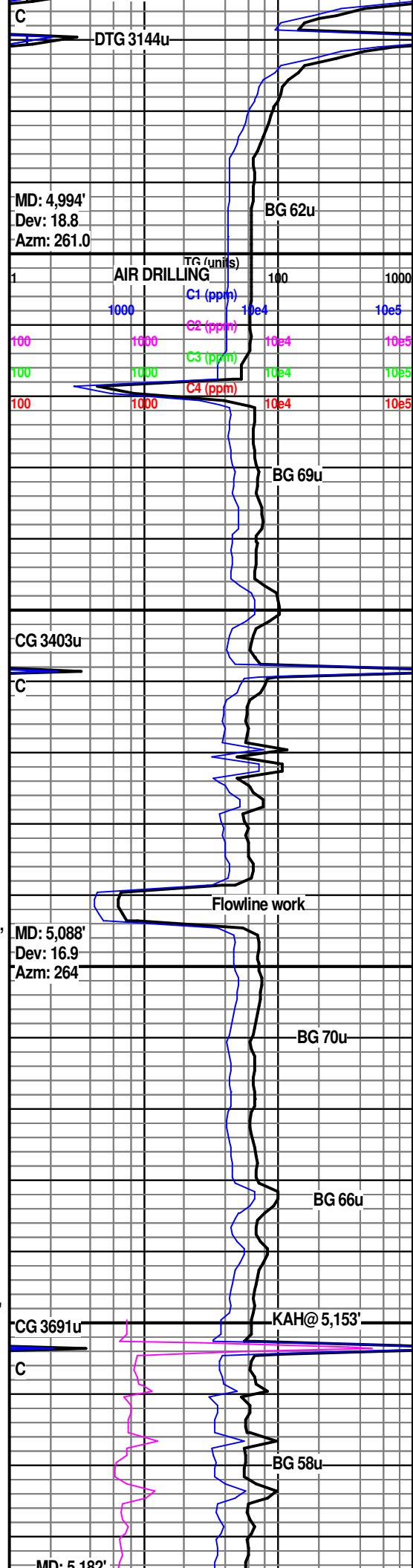
SS: gy, lt gy, wl consol, vf gran, sb ang, sb rnd, sm, vit, srt

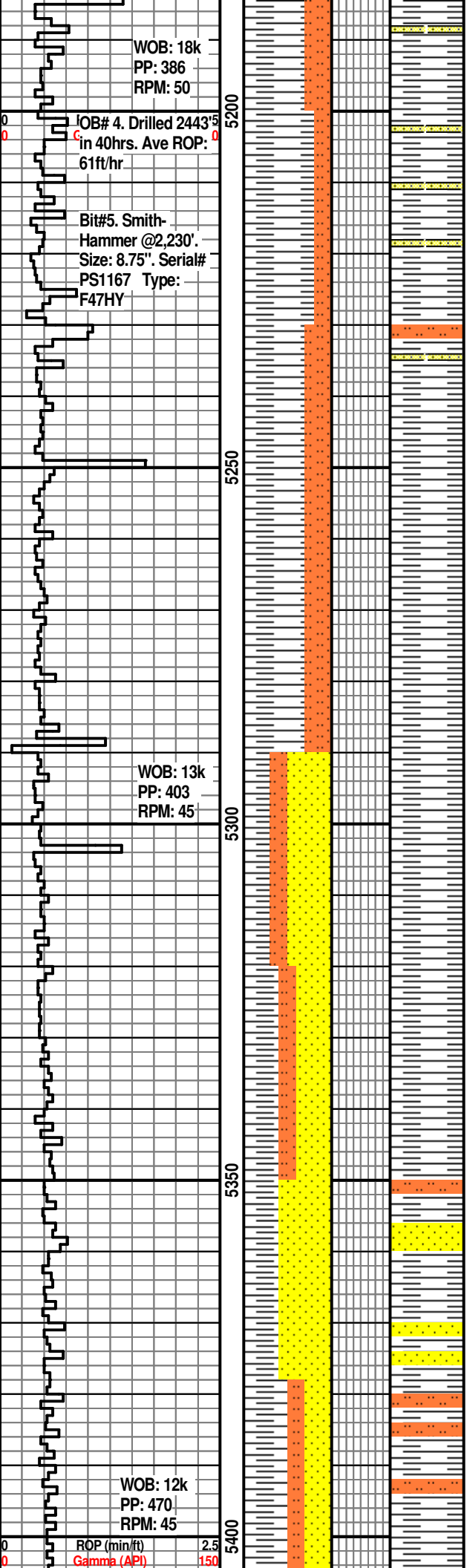
SS: gy, lt gy, wl consol, vf gran, sb ang, sb rnd, srt; SLTST: dk gy, m consol, blk, grny

SS: gy, lt gy, wl consol, vf gran, sb ang, sb rnd, srt; SLTST: dk gy, dk red-brn, m consol, blk, grny

SLTST: gy-ltgy, frm-sli hd amorph, n calc, micmica; SH: ltgy, gy ip, frm-sli frm, plty, n calc; tr SS: gy, v-f grn, p-m srt, sbang-sbrnd, sli hd-frm, silc cmt

SH: ltgy, gy ip, frm-sli frm, plty-blky, amorph ip, n calc, micmica, tr fn pyr; SLTST: gy-ltgy, frm-sli hd, amorph, n-vry





SLTST: gy-ltgy, frm-sli frm, amorph, n calc, micmica

SH: ltgy, gy ip, frm-sli frm, plty-blky, amorph ip, n calc, micmica, tr frn pyr, slty ip; SLTST: gy-ltgy, frm-sli hd, hd, amorph, n-vry sli calc, micmica, pp pyr ip

SH: ltgy, gy ip, frm-sli frm, plty-blky, amorph ip, n calc, micmica, slty ip; SLTST: gy-ltgy, sli hd-hd, amorph, n calc, micmica, pp pyr ip

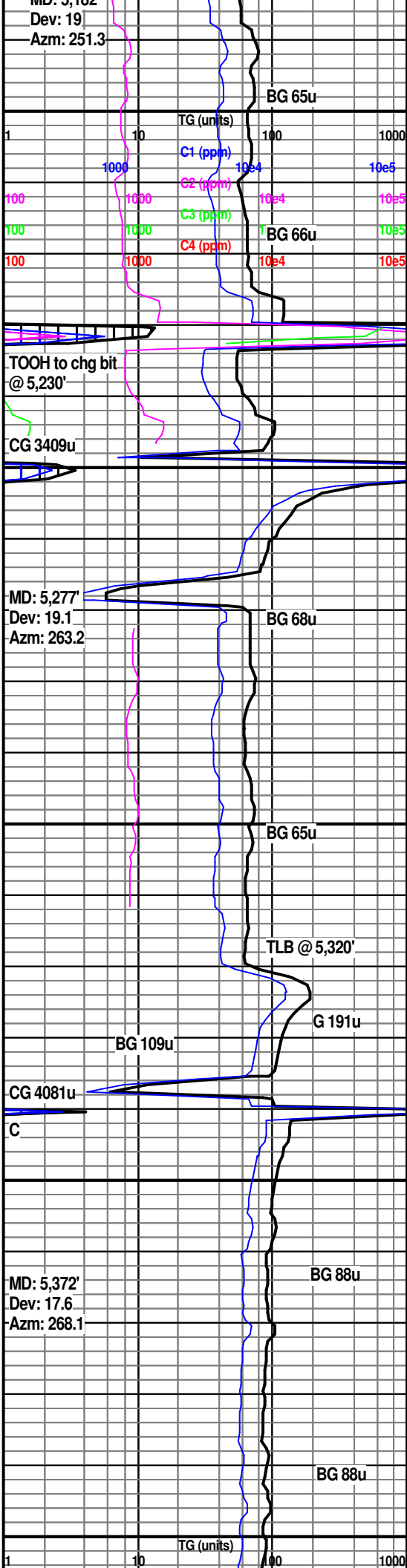
SH: ltgy-gy, frm-sli frm, plty-blky, amorph ip, n calc, micmica, slty ip; SLTST: gy-ltgy, sli hd-frm, amorph, sli calc-calc, micmica

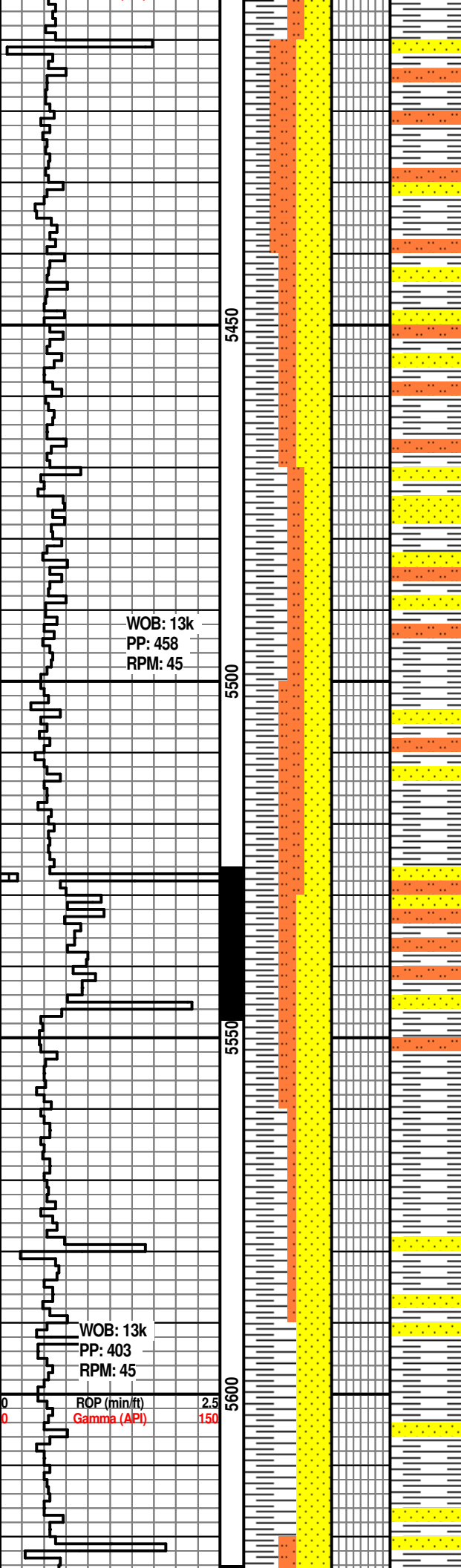
SH: ltgy-gy, frm-sli frm, plty-blky, amorph ip, n calc, micmica

SS: gy, lt gy, wl consol, vf gran, sb ang, sb rnd, tr rnd, sm, srt, sil cmt; SH: ltgy, gy ip, frm-sli frm, plty-blky, amorph ip, n calc, micmica, slty ip

SS: gy, lt gy, wl consol, vf gran, sb ang, sb rnd, tr rnd, sm, srt, sil cmt

SH: gy, lt gy, occ dk Gy, m frm, tr sft, blky, tr plty, rthy, dull





SLTST: dk gy,gy, tr blk, frm-hd, blk, arg, arg, sity; SS: lt gry, v wl consol, vf gran, sb ang, sb rnd, wl srt, sil cmt

SS: lt gy, gy, v wl consol, vf gran, sb ang, sb rnd, sm, tr vit, wl srt, sil cmt, arg

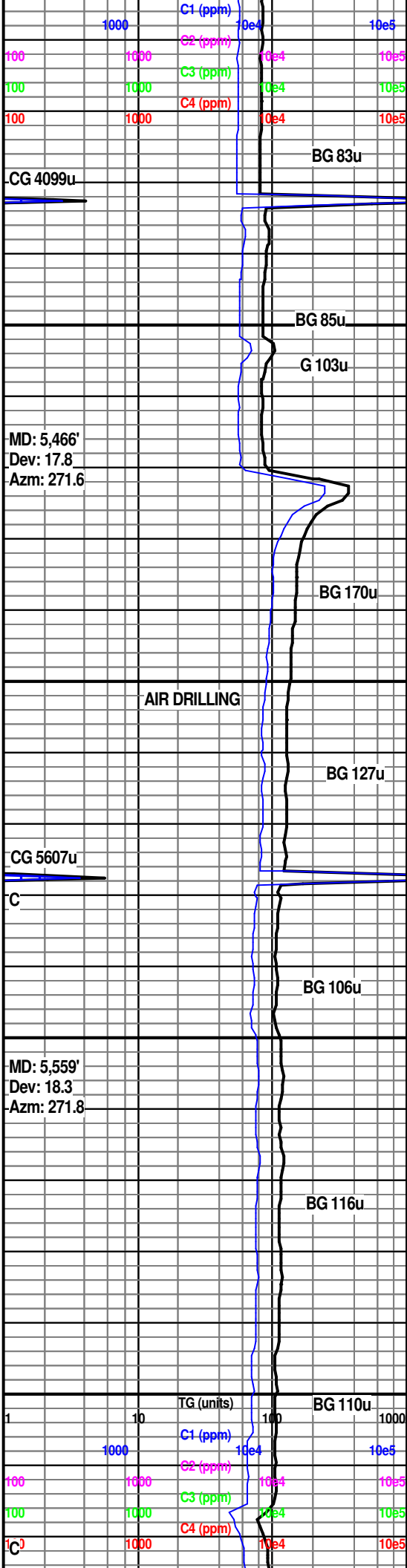
SH: gy, lt gy, tr dk gy, sft-frm, blk, amor, tr brit, bnd, dull, tr rthy, sm, n calc

SS: lt gy, gy, v wl consol, vf gran, sb ang, sb rnd, sm, tr vit, wl srt, sil cmt, arg

SH: gy, lt gy, tr dk gy, sft-frm, blk, amor, tr brit, rnd, dull, tr rthy, sm, n calc

SH: gy, lt gr, tr dk gy, sft-frm, blk, amor, tr brit, bnd, dull, tr rthy, sm, n calc

SS: lt gy, gy, v wl consol, vf gran, sb ang, sb rnd, sm, tr vit, wl srt, sil cmt, arg



BG 83u

BG 85u

G 103u

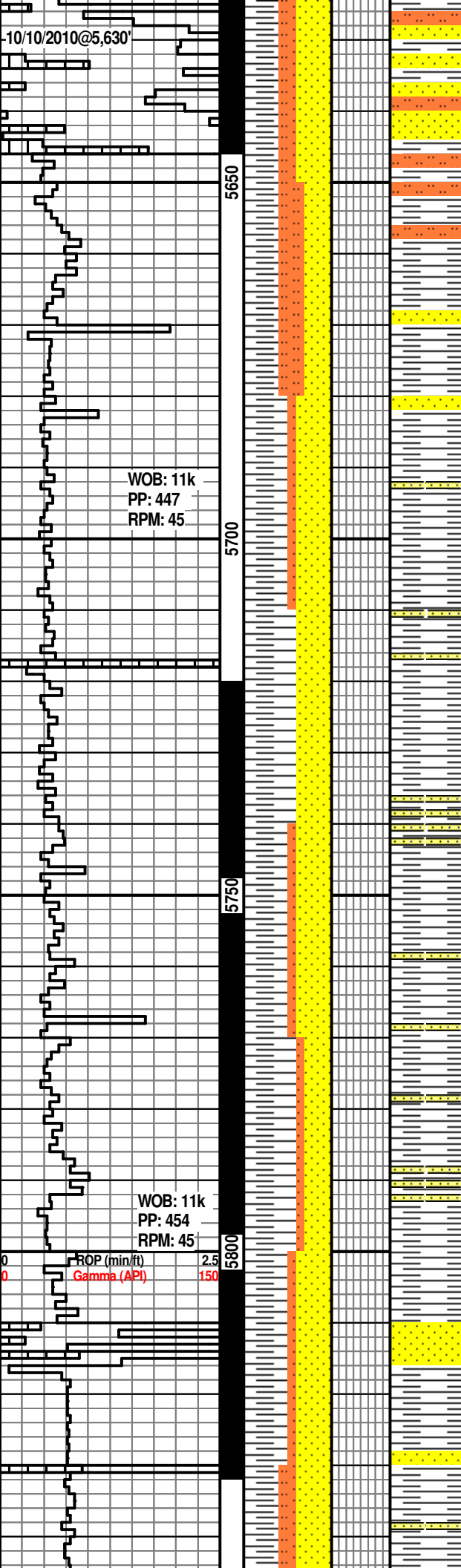
BG 170u

BG 127u

BG 106u

BG 116u

BG 110u



SS: lt gy, gy, consol-wl consol, vf gran, sb ang, sm, srt, sil cmt

BG 88u

SS: lt gy, gy, consol-wl consol, vf gran, sb ang, sm, srt, sil cmt, pyr
SLTST: dk gy, gy, tr blk, frm-hd, blk, arg, slty

BG 91u

SS: lt gy, gy, wl consol, vf gran, sb ang, sm, srt-wl srt, sil cmt, tr pyr

BG 91u

BENSON SANDS @ 5,712'

CG 5028u

SH: gy, lt gy, dk gry, tr brn, sft-hd, blk, ply, bnd, tr brit, rthy, dull, tr wxy, n calc, tr pyr

C

MD: 5,747'

Dev: 16

Azm: 267.7

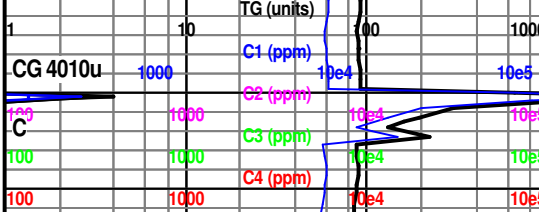
BG 91u

SS: lt gy, gy, wl consol, tr qtzt, vf gran, sb ang, sm, srt-wl srt, sil cmt, tr arg

SH: gy, lt gy, dk gy, sft-frm, blk, bnd, tr brit, rthy, dull, n calc

BG 92u

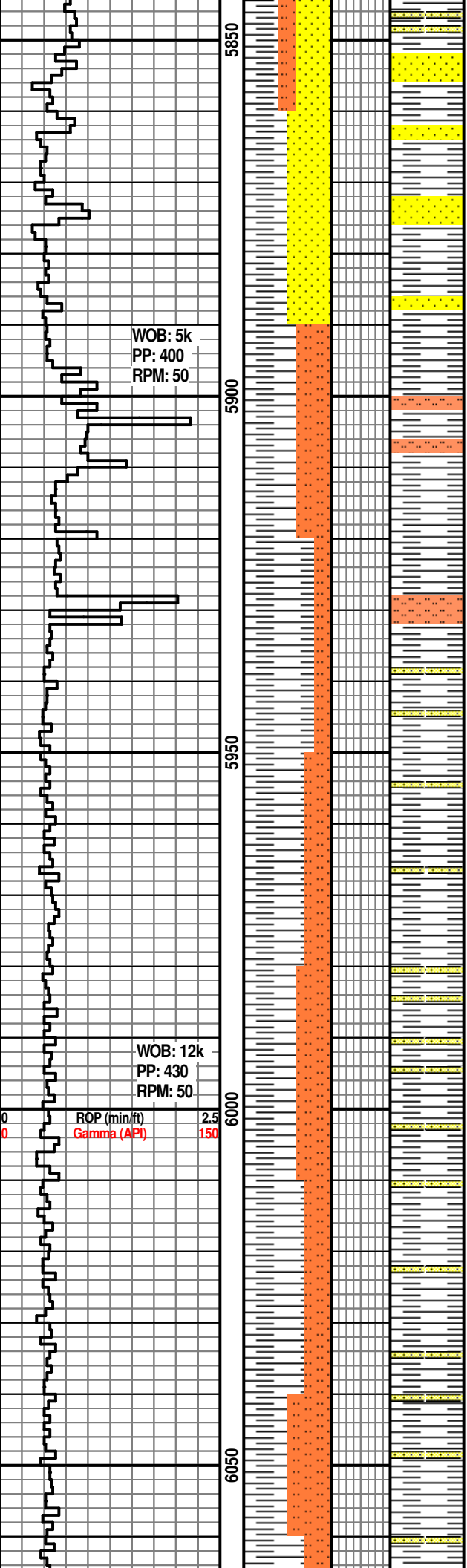
SS: lt gy, gy, wl consol, tr qtzt, vf gran, sb ang, sm, srt-wl srt, sil cmt, tr arg; SLTST: drk gy, gy, tr blk, frm-hd, blk, arg, slty



MD: 5,842'

Dev: 17

SS: lt gy, gy, wl consol, vf gran, sb ang,



WOB: 5k
PP: 400
RPM: 50

WOB: 12k
PP: 430
RPM: 50

ROP (min/ft) 2.5
Gamma (API) 150

sm, srt-wl srt, sil cmt, trpyr

SS: lt gy, gy, wl consol, vf gran, sb ang, sm, srt-wl srt, sil cmt

SH: ltgy, gy ip, frm-sli frm, plty, n calc; SLTST: gy-ltgy, frm-sli hd amorph, n calc, micmica

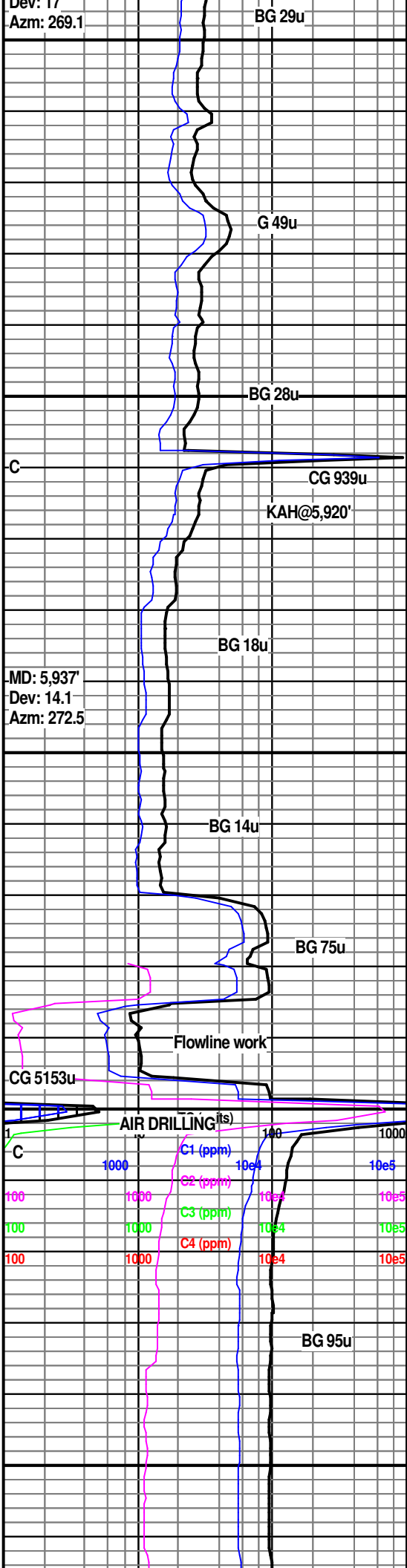
SH: ltgy-gy ip, tn ip, frm-sli frm, plty-blky, amorph ip, n calc, micmica; SLTST: gy-ltgy, frm-sli hd, amorph, blky ip, n calc, micmica, tr fn pyr

SH: ltgy-gy, med gy ip, tr dkgy, frm-sli frm, plty-blky, n calc, micmica; SLTST: gy-medgy, dkgy ip, sli hd, frm ip, amorph, n calc, micmica, fn pyr, rnd pyr nod ip

SH: gy-med gy, tr dkgy, frm-sli hd, plty-blky, n calc, micmica, Incl pyr ip; SLTST: med-dk gy, tr ltgy, sli hd, frm ip, amorph-blky, n calc, micmica, fn pyr, rnd pyr nod

SH: gy-med gy, frm-sli frm sli hd ip, plty-blky, n calc, micmica, fn pyr; SLTST: med-dk gy, sli hd, frm ip, amorph-blky, n calc, micmica, fn pyr, rnd pyr nod ip

SH: gy-med gy, frm-sli frm, plty-blky, n calc, micmica; SLTST: med-dk gy, sli hd, frm ip, amorph-blky, n calc, micmica, fn pyr



Dev: 17
Azm: 269.1

BG 29u

G 49u

BG 28u

C

CG 939u

KAH@5,920'

BG 18u

MD: 5,937'
Dev: 14.1
Azm: 272.5

BG 14u

BG 75u

Flowline work

CG 5153u

AIR DRILLING (ts)

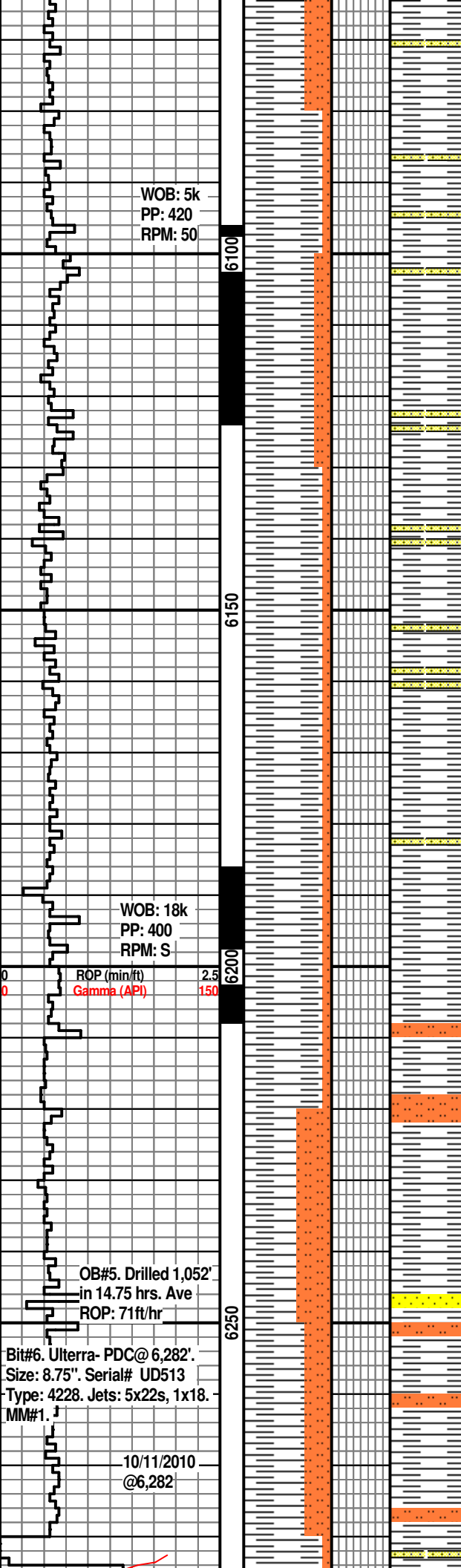
C1 (ppm)

C2 (ppm)

C3 (ppm)

C4 (ppm)

BG 95u



SH: gy-med gy, frm-sli frm, plty-blky, n calc, micmica, slty, v slty ip; SLTST: med gy- gy, dkgy ip, sli hd-frm, amorph, blky, n calc, micmica, fn pyr

SH: gy-med gy, frm-sli frm, plty-blky, n calc, micmica, slty; SLTST: med gy-gy, dkgy ip, sli hd-frm, amorph, blky, n calc, micmica, fn pyr

SH: med-dk gy, gy ip, frm-sli frm, plty-blky, n calc, micmica, slty; SLTST: med gy-gy, dkgy ip, sli hd-frm, amorph, blky, n calc, micmica, fn pyr

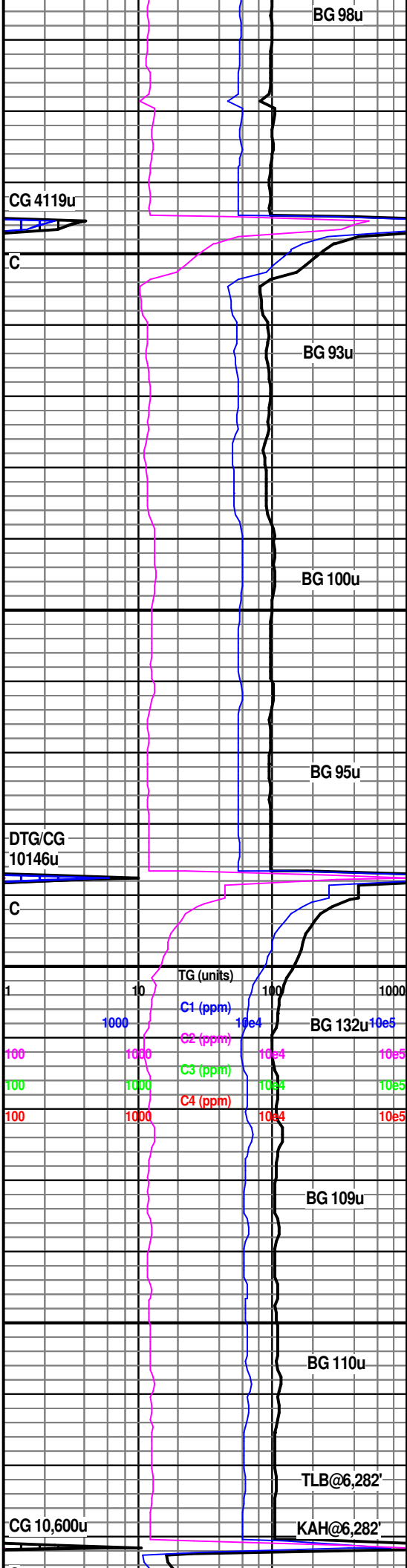
SH: medgy-gy, frm-sli frm, plty-blky, n-sli calc, micmica, slty, calc incl ip; SLTST: gy-ltgy, sli hd-frm, amorph-blky, n calc, micmica, fn pyr

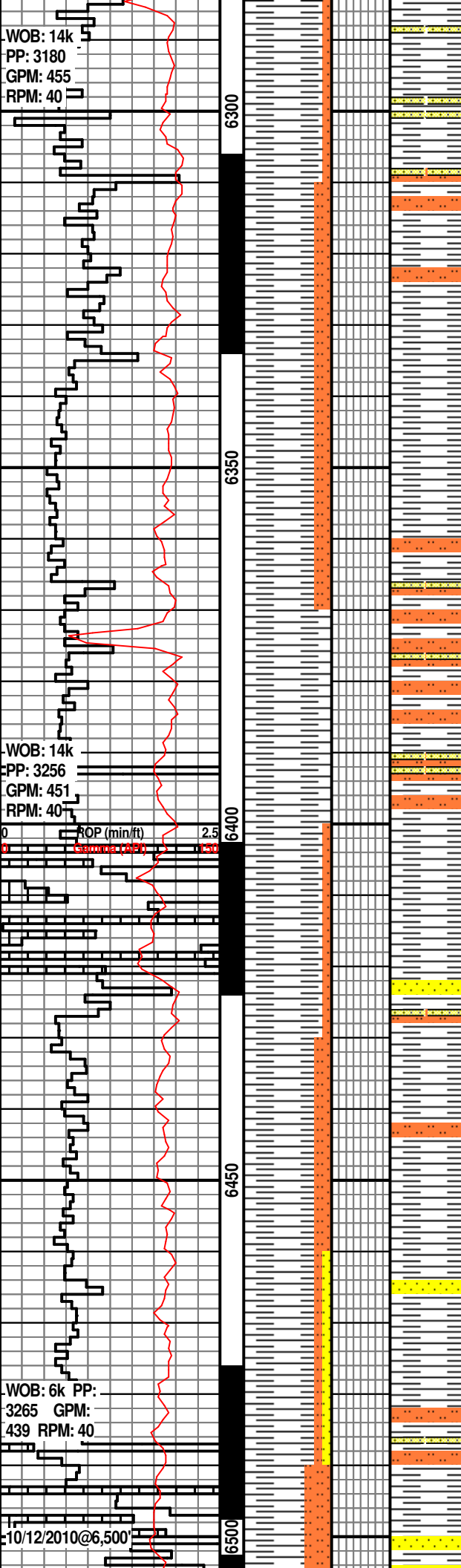
SH: medgy-gy, frm-sli frm, plty-blky, n-sli calc, micmica, slty, fn pyr incl ip; SLTST: gy, dkgy ip, sli hd-frm, amorph-blky, n calc, micmica

SH: medgy-gy, frm-hd, amorph, fn pyr ip; SLST: dkgy-blk, amorph-blky, micmica

SH: medgy-gy, sft-medfrm, plty-blky, slty; SLST: dkgy-blk, sft-medfrm, sub rnd-sub ang, v fn pyr ip

Switching to Oil-Based mud @ 6,282'MD





SH: medgy-gy-dkgy, vddkgy-blk ip, sft-medfrm, plty-blky, slty; SLST: dkgy-blk, sft-medfrm, sub rnd-sub ang, v fn pyr ip

SH: gy-dkgy, tr blk, sft-med frm, blk, slty; SLST: dkgy-blk, sft-med frm, sub rnd-sub ang

SH: gy-dkgy, tr blk, sft-med frm, blk, slty; SLST: dkgy-blk, sft-med frm, sub rnd-sub ang

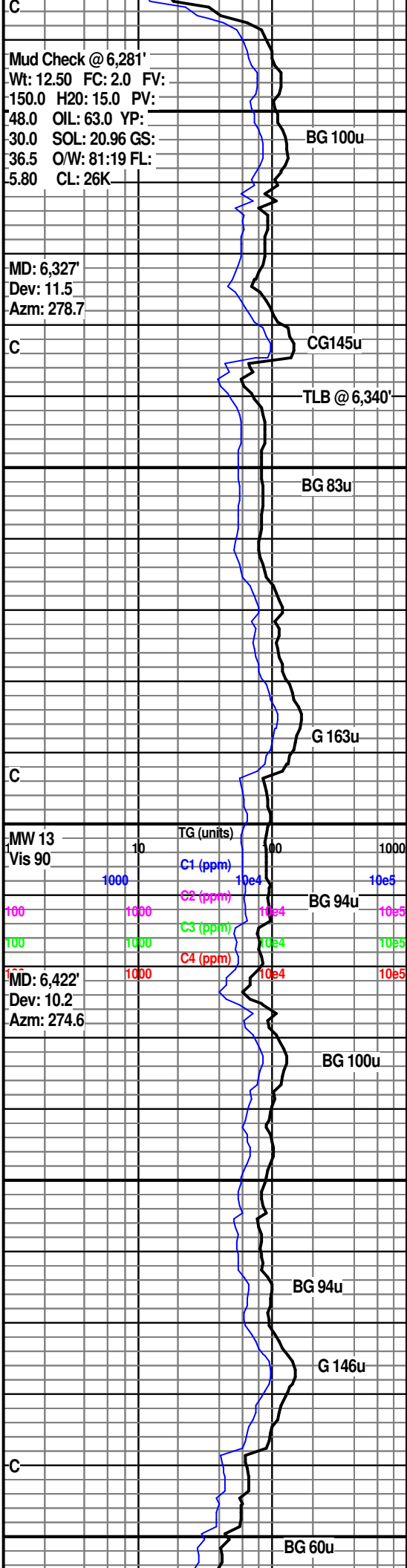
SH: gy, dk gy, tr blk, tr red-brn, sft, tr m frm, blk, amor, lam, bnd, rthy, dull, slty

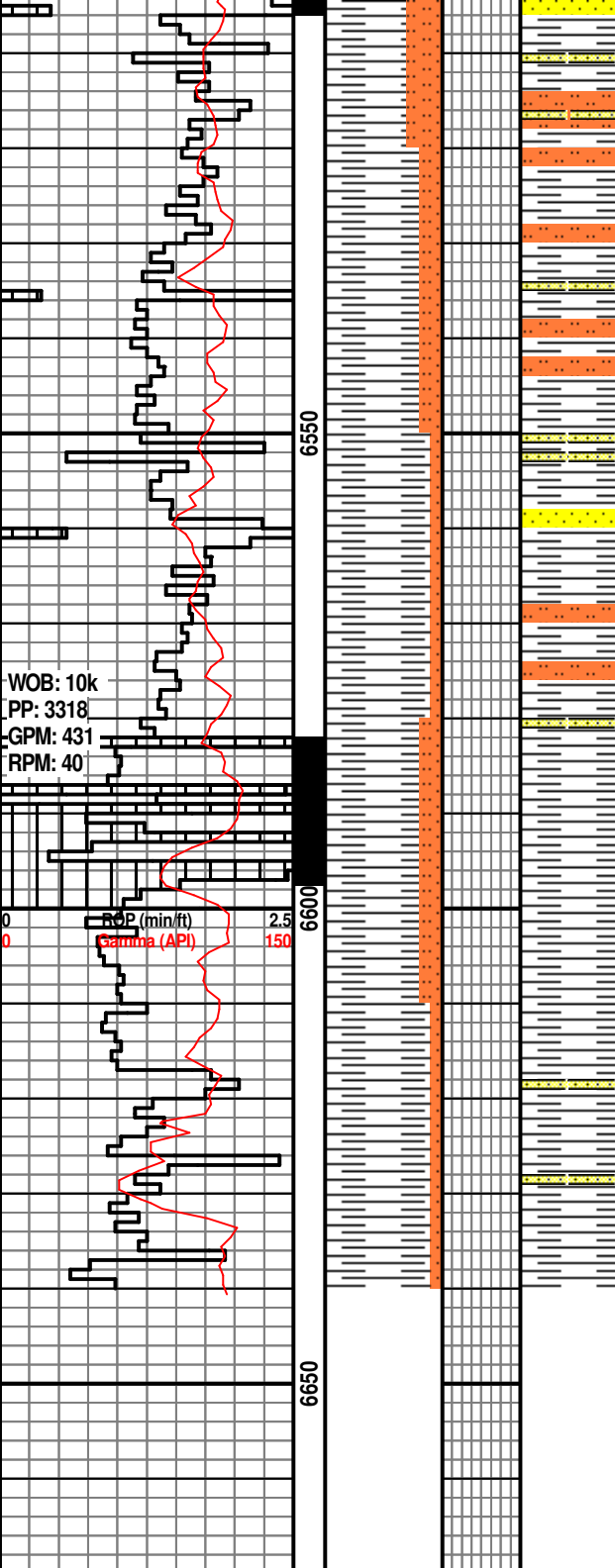
SH: gy, dk gy, tr blk, tr red-brn, sft-frm, blk, amor, lam, bnd, rthy, dull, slty

SLTST: dk gy, tr red, frm-hd, vf slty gran, sb ang

SH: gy, lt gy, dk gy, tr red, v sft-m frm, blk, amor, tr lam, bnd, tr brit, rthy, dull

SH: dk gy, gy, dk tn-brn, dk brn, m frm,





amor, blk, bnd, rthy, dull, sm, tr SS

SH: dk gy, gy, dk tn-brn, dk brn, sft-m frm, occ hd, amor, blk, bnd, rthy, dull, sm, tr SS

SH: dk gy, gy, dk brn, sft-m frm, amor, blk, bnd, rthy, dull, sm, tr SS

SH: medgy-gy, sft-slifrm, plty-blky, amorph ip, slty; SLST: med gy, sft-sli frm, frm ip, amorph

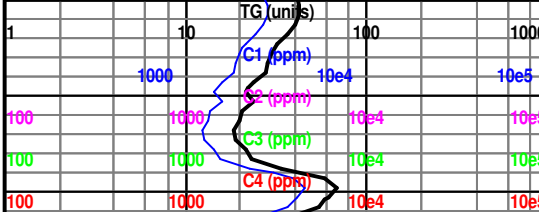
SH: dkgy-blk, sft-slifrm, flky-blky, fiss ip, silty ip; SLST: gy-dkgy, sft-sli hd, amorph

KO @ 6,641'

See Gould 2240H Horizontal log

MD: 6,517'
 Dev: 8.6
 Azm: 271.5

MW 13.3
 Vis 84
 KAH@6.580'
 C



G 58u

BG 40u

G 94u

G 72u

G 58u

BG 38u