



Gould #2240H 1"MD

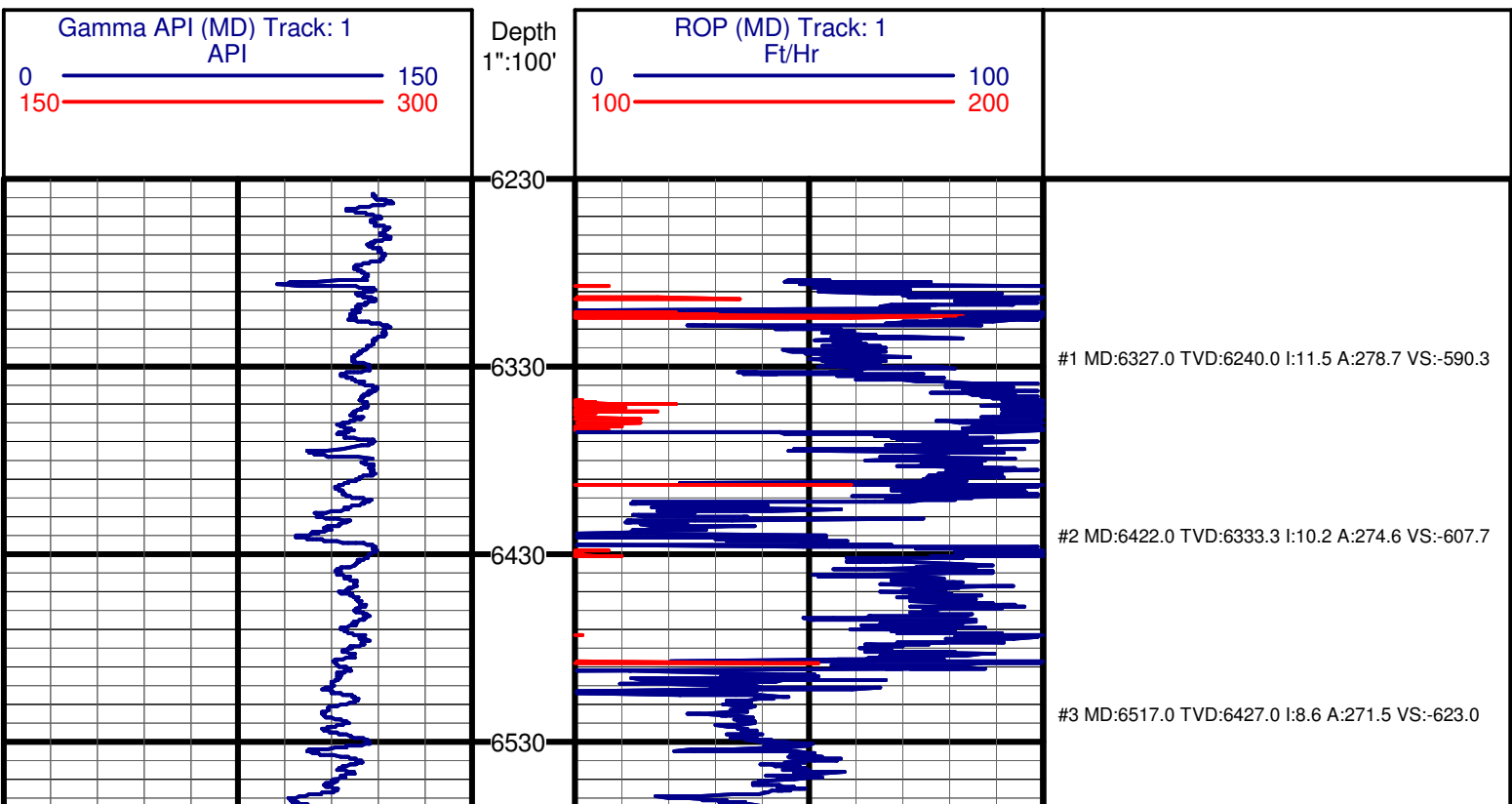
(Scale: 1":100')

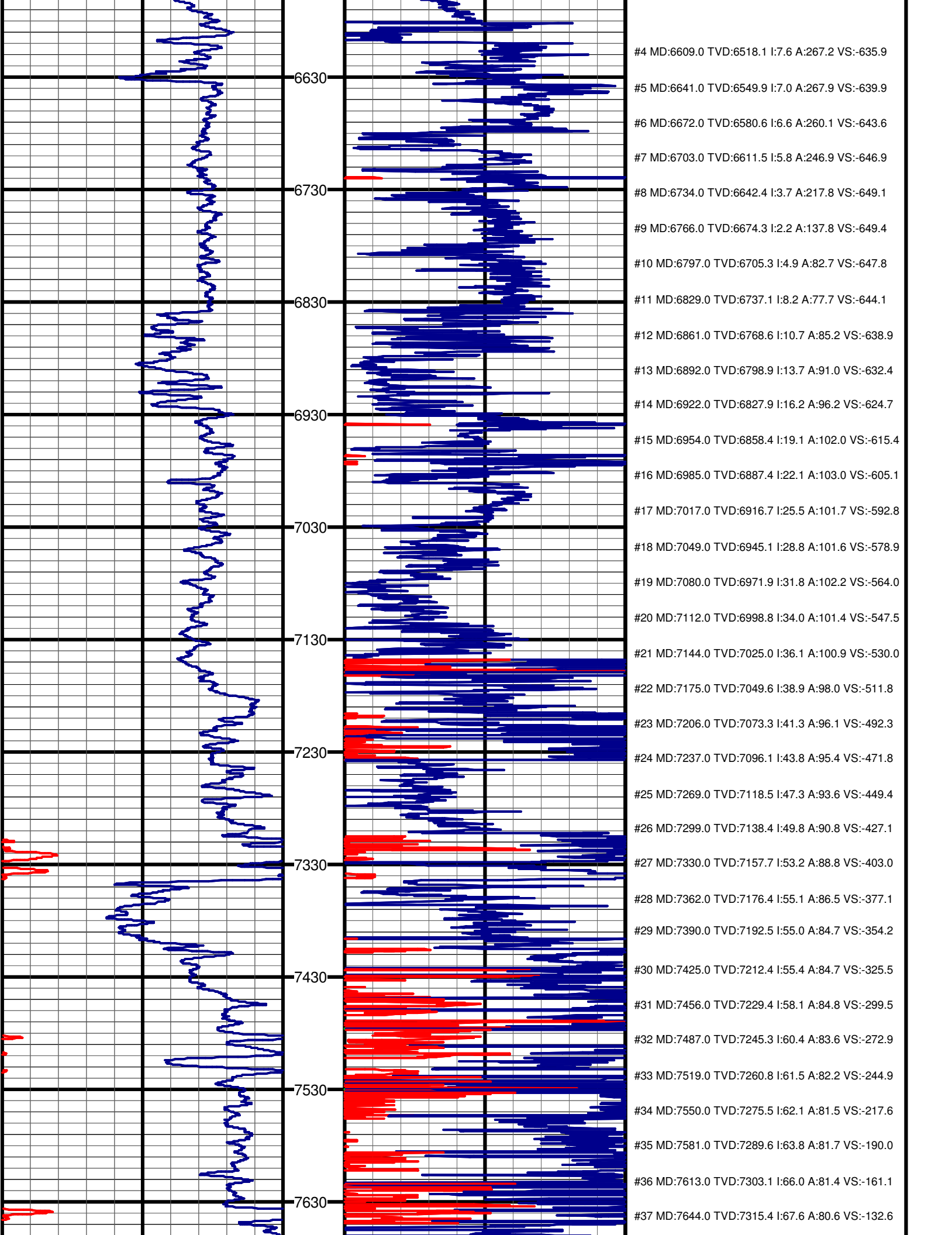
Company: XTO
 Well: Gould 2240H
 Field: Marcellus
 Well ID: 474902114
 Job Number: DDDPA-100209
 Location: Jane Lew, West Virginia
 Operator 1: Blake Holdridge
 Operator 2: Justin Blakeney
 State: WV
 County: Upshur
 Country: USA
 Elev KB: 1216.01'
 Elev DF: 1216.01'
 Elev GL: 1200.01'

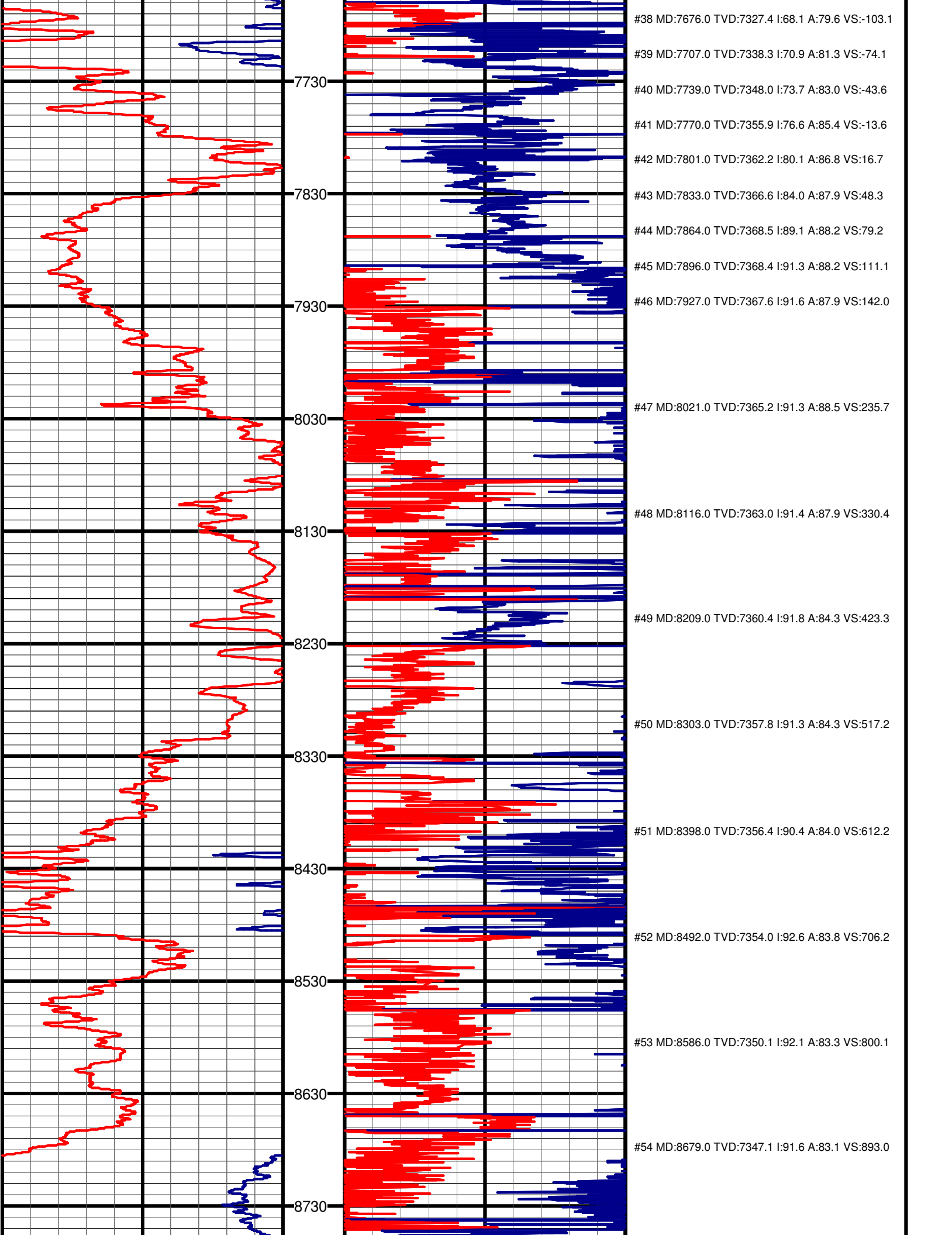
Comment 1:
 Comment 2:
 Comment 3:
 Comment 4:
 Comment 5:

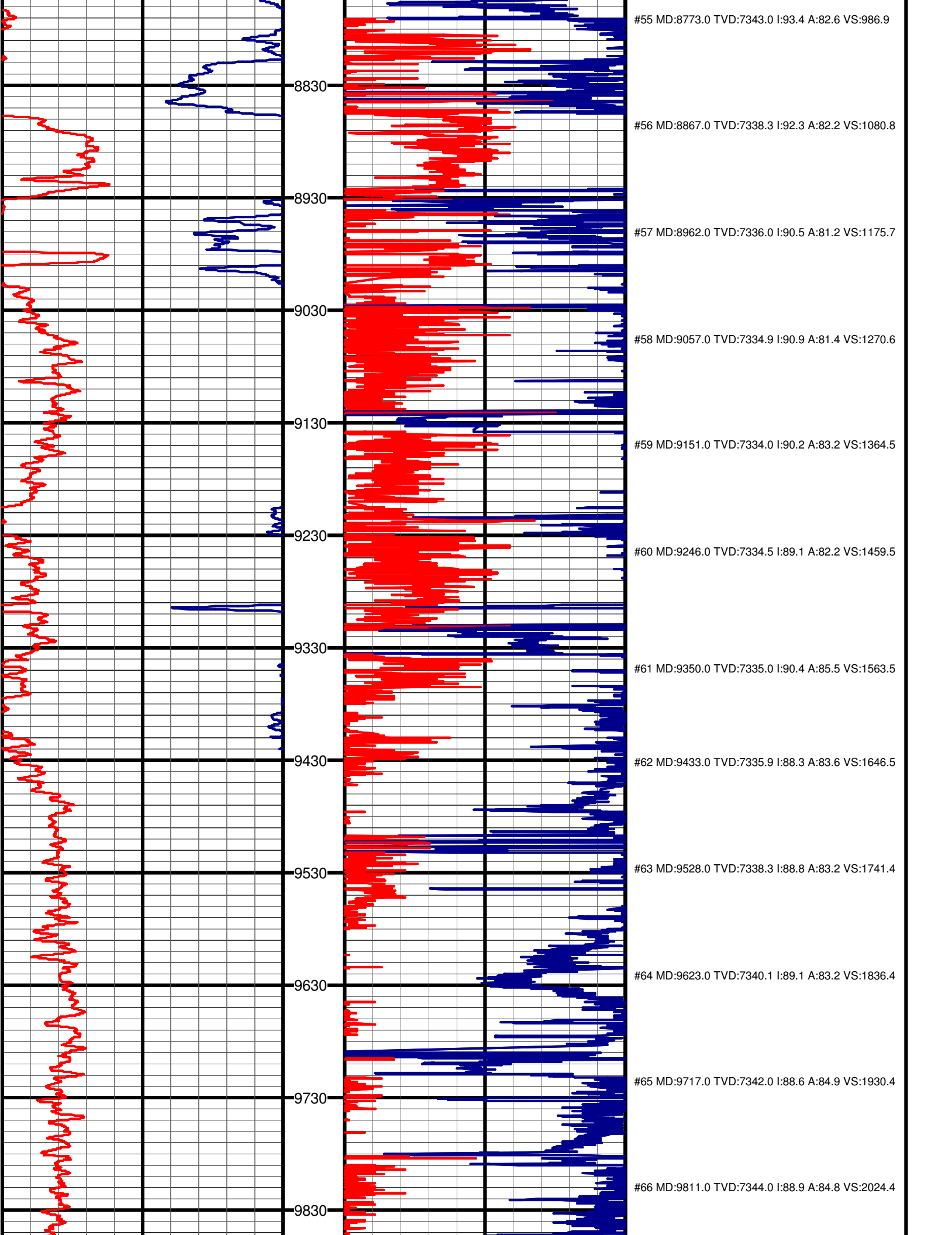
Hole Data			Casing Record		
Size	From	To	Size	From	To
12 1/4"	0'	2734'	13 5/8"	0'	2734'
8 3/4"	2734'	10742'	9 5/8"	2734'	10742'

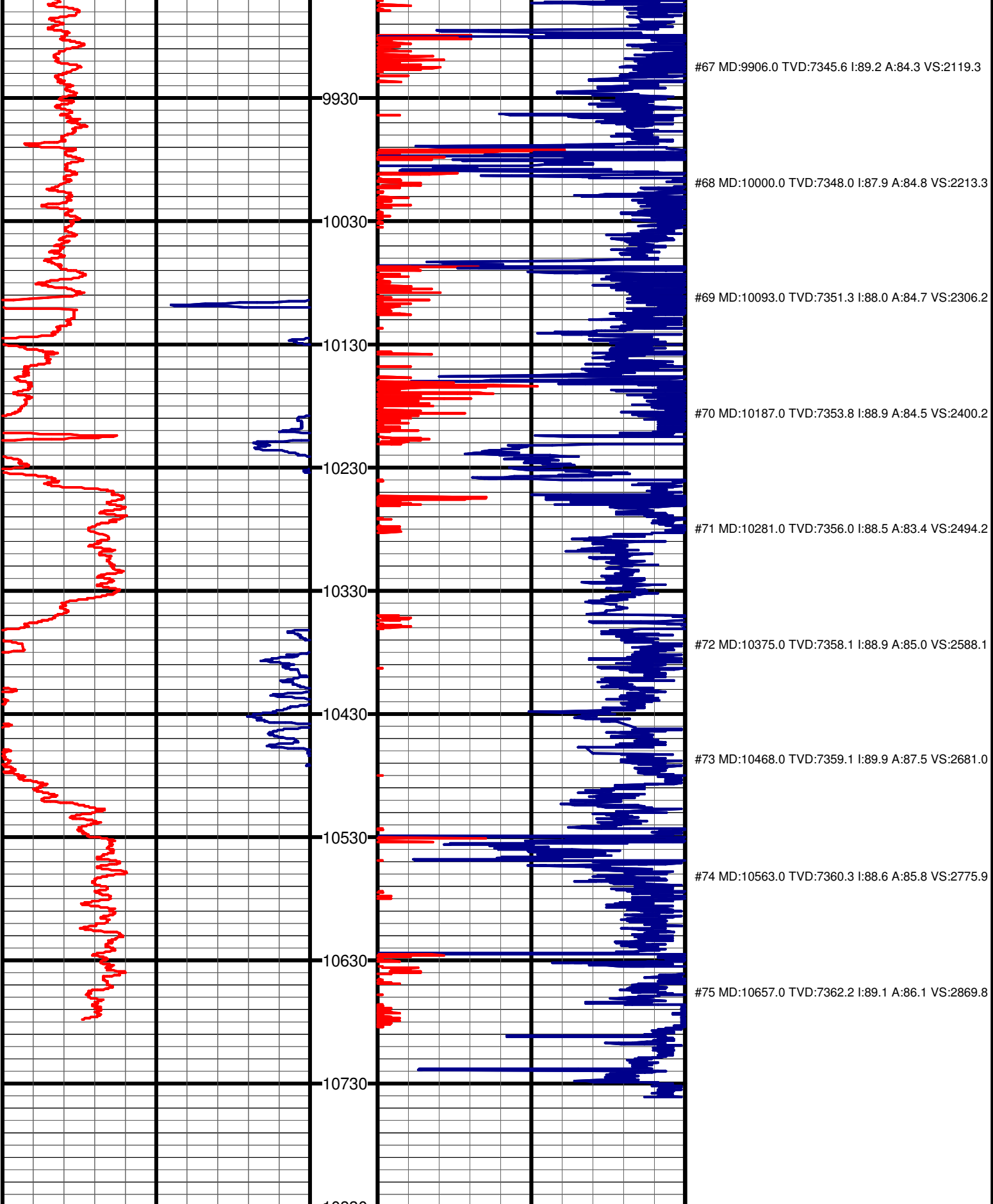
Tool Run Data		Run #1	Run #2	Run #3	Run #4	Run #5
Tool S/N	300	300	115			
Cal Factor	3.94	3.94	3.94			
Gamma Offset	61'	61'	61'			
Start Depth	6610'	6980'	7237'			
Start Date	10/10/10	10/13/10	10/15/10			
Start Time	11:00	19:00	00:00			
End Depth	6980'	7237'	10742'			
End Date	10/13/10	10/15/10	10/19/10			
End Time	17:00	00:00	22:00			











Gamma API (MD) Track: 1
API

0 150 300

ROP (MD) Track: 1
Ft/Hr

0 100 200

10830
Depth
1":100'

