



**RADIAL CEMENT BOND / CCL  
GAMMA RAY / VDL**

Company ANTERO RESOURCES CORPORATION  
 Well KILSKA 2H  
 Field MARCELLUS  
 County TYLER  
 State W.V.

Company ANTERO RESOURCES CORPORATION  
 Well KILSKA 2H  
 Field MARCELLUS  
 County TYLER  
 State W.V.

Location: API #: 4709502584  
 Other Services

SEC	TWP	RGE	Elevation
Permanent Datum	G.L.	Elevation	1009'
Log Measured From	K.B.	D.F.	1039'
Drilling Measured From	K.B. OF 30'	G.L.	1009'

Date	10/10/19	
Run Number	ONE	
Depth Driller	22275'	
Depth Logger	6800'	
Bottom Logged Interval	6800'	
Top Log Interval	SURFACE	
Open Hole Size	N/A	
Type Fluid	H2O	
Density / Viscosity	N/A	
Max. Recorded Temp.	142 DEG	
Estimated Cement Top	2530'	
Time Well Ready	N/A	
Time Logger on Bottom	N/A	
Equipment Number	340	
Location	BRIDGEPORT, WV	
Recorded By	J.BOGGS	
Witnessed By	BRYAN HEMARD	

Borehole Record			Casing Record				
Run Number	Bit	From	To	Size	Weight	From	To
				13 3/8"	N/A	573'	SURFACE
				9 5/8"	N/A	2593'	SURFACE
				5 1/2"	N/A	22275'	SURFACE

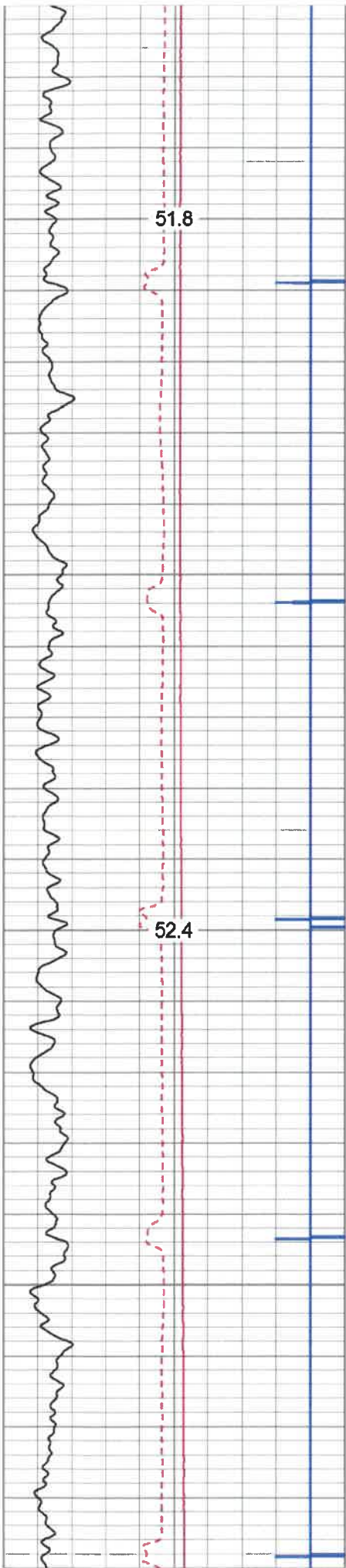
<<< Fold Here >>>

All interpretations are opinions based on inferences from electrical or other measurements and we cannot and do not guarantee the accuracy or correctness of any interpretation, and we shall not, except in the case of gross or willful negligence on our part, be liable or responsible for any loss, costs, damages, or expenses incurred or sustained by anyone resulting from any interpretation made by any of our officers, agents or employees. These interpretations are also subject to our general terms and conditions set out in our current Price Schedule.

**Comments**

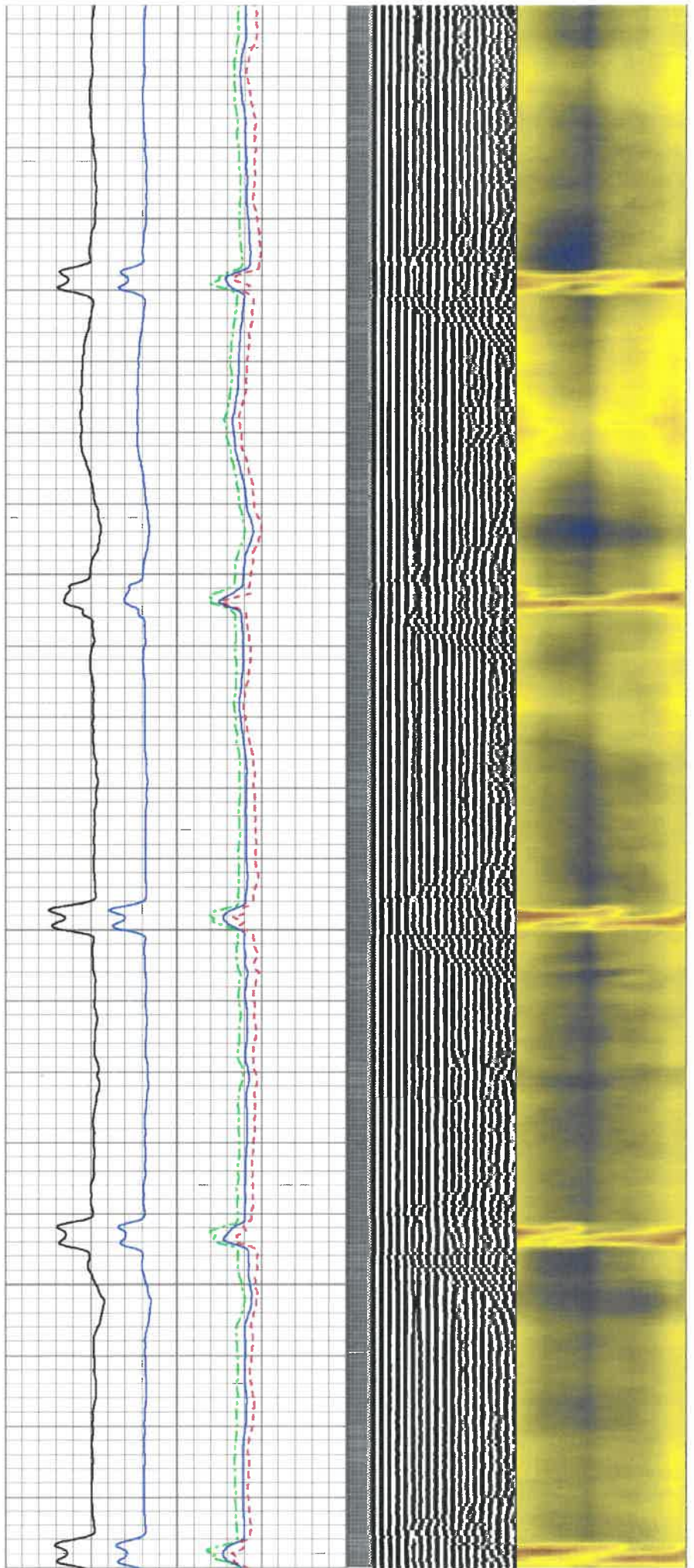
THANK YOU FOR USING KLX ENERGY SERVICES  
 TOP OF CEMENT @ 2530'  
 MARKER JOINT @ 5636'-5646'  
 BOTTOM HOLE TEMP- 142 DEG

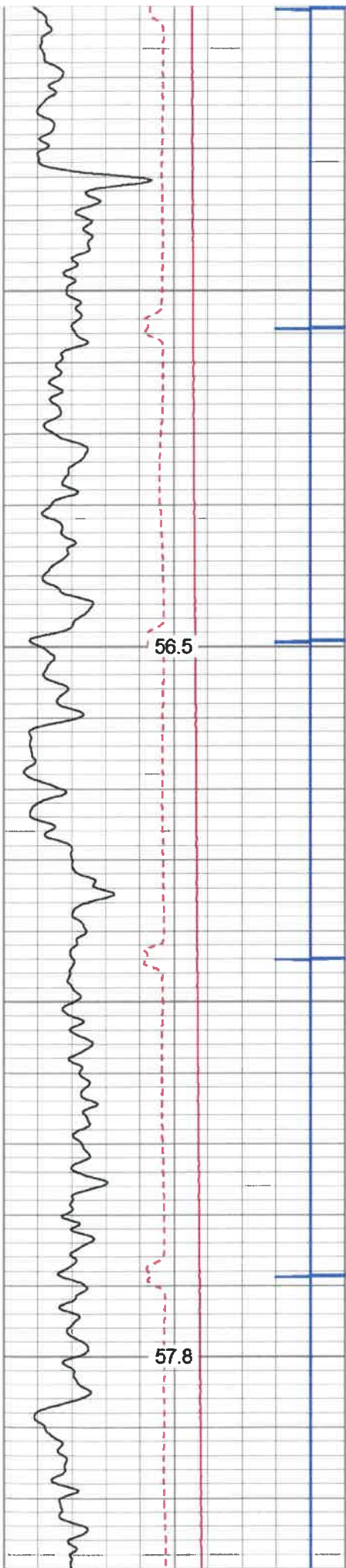




200

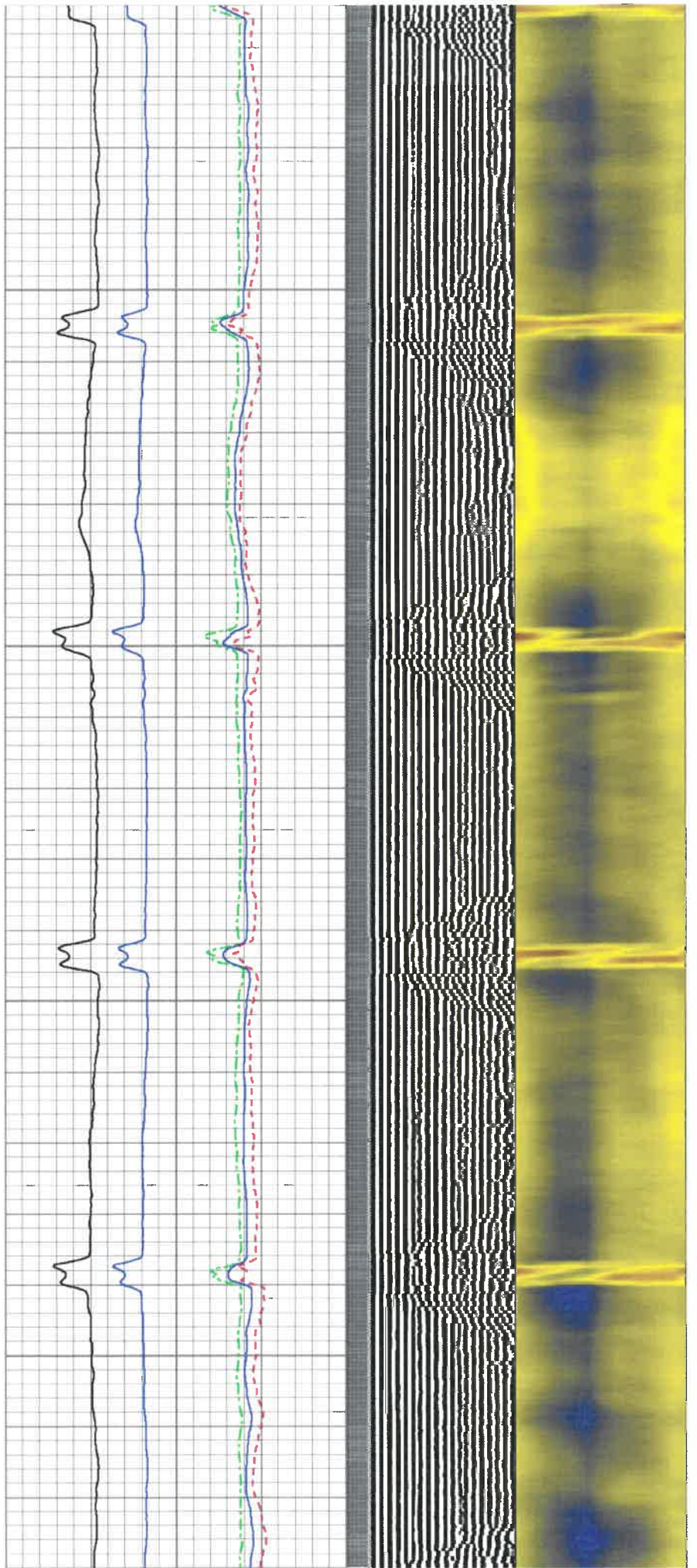
300

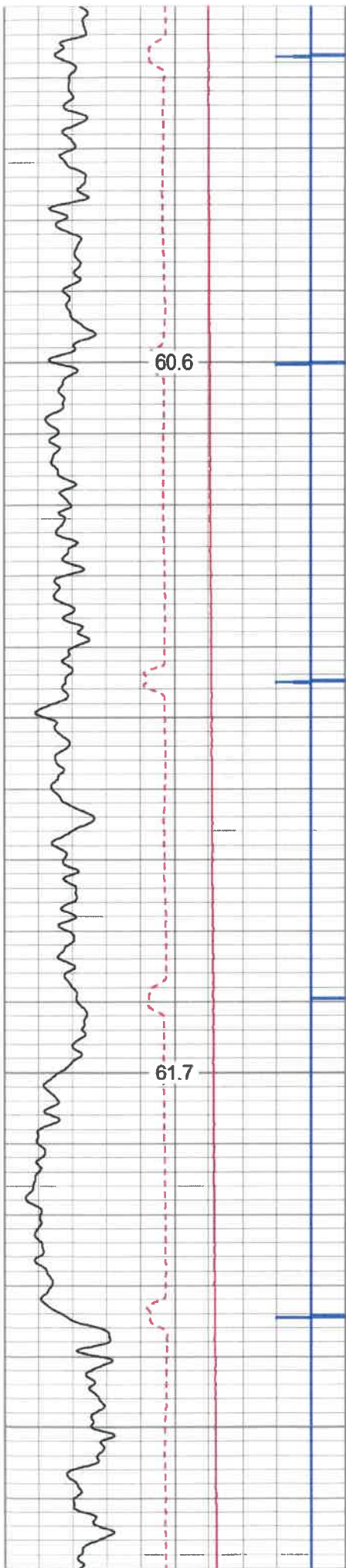




700

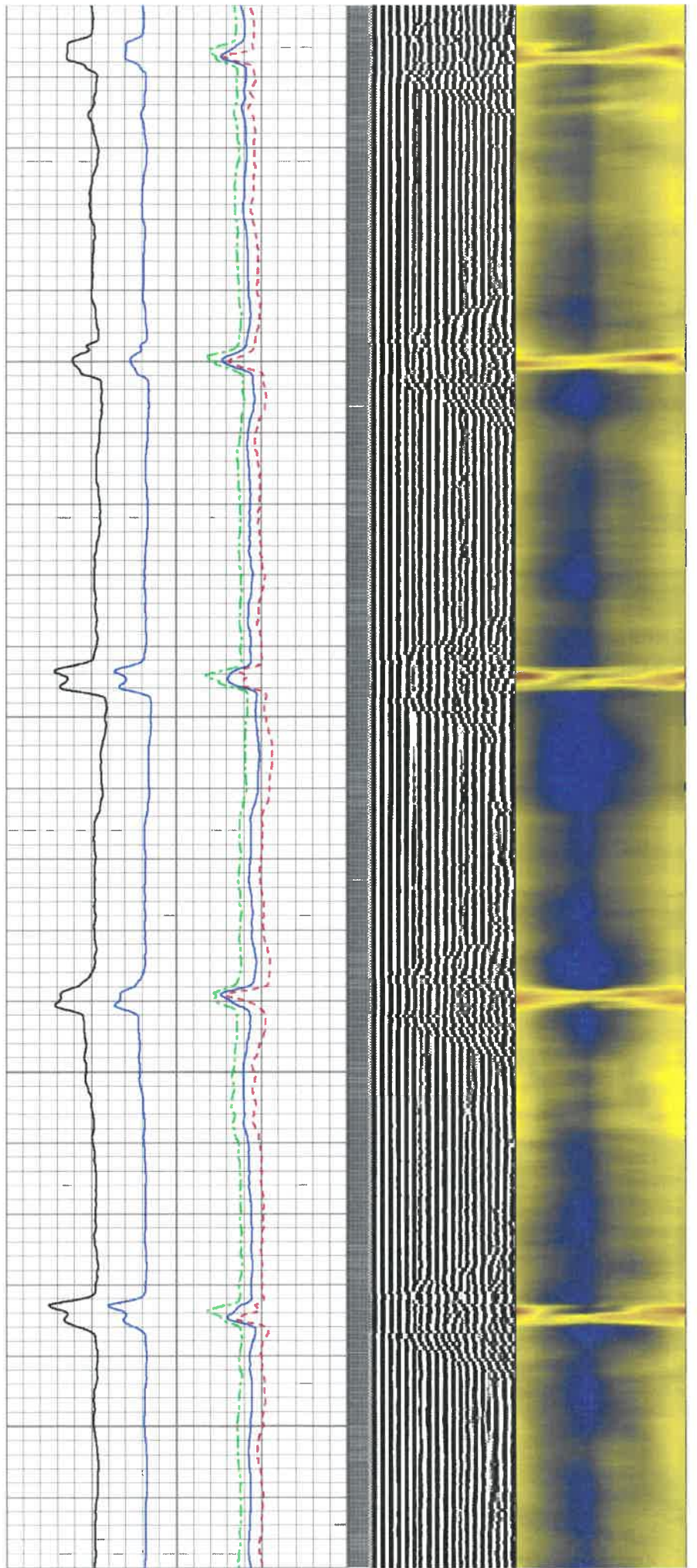
800

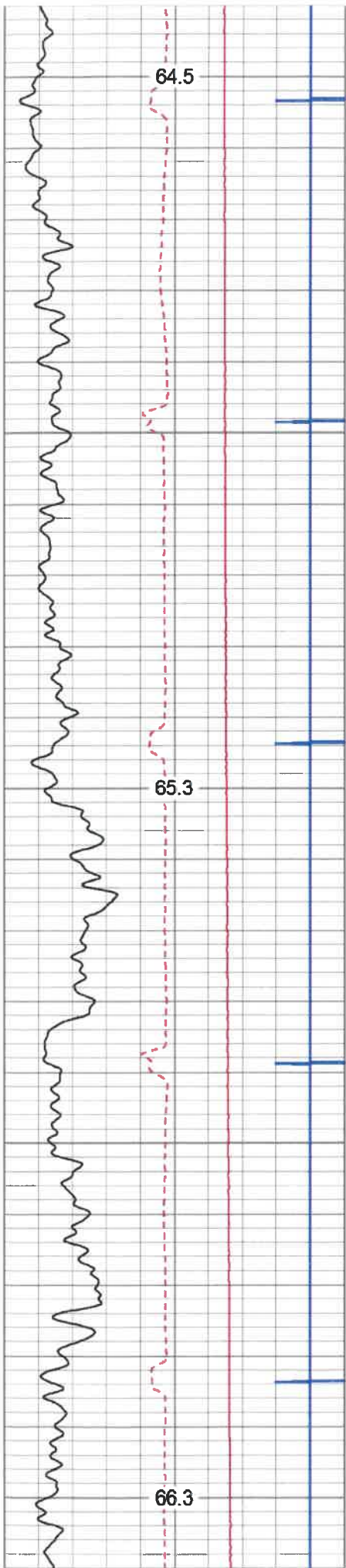




1100

1200

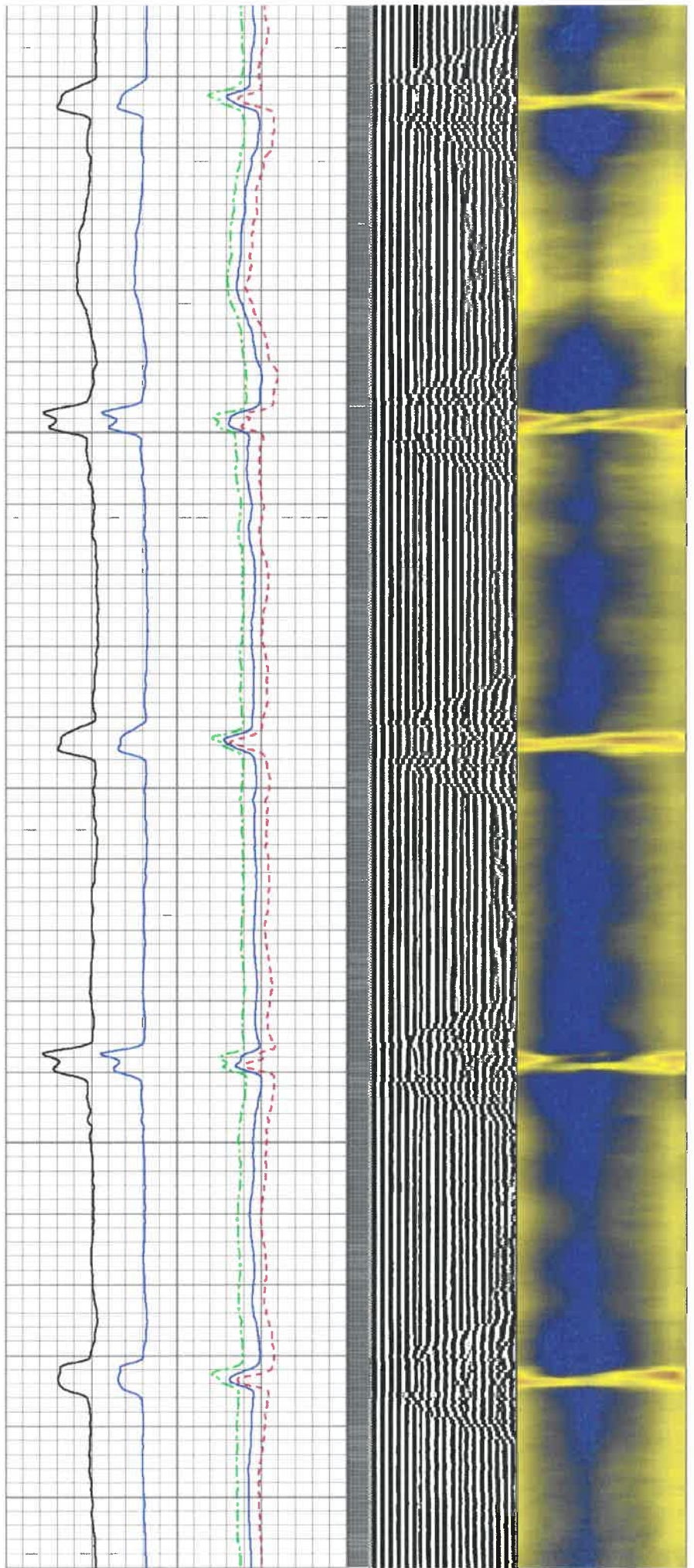


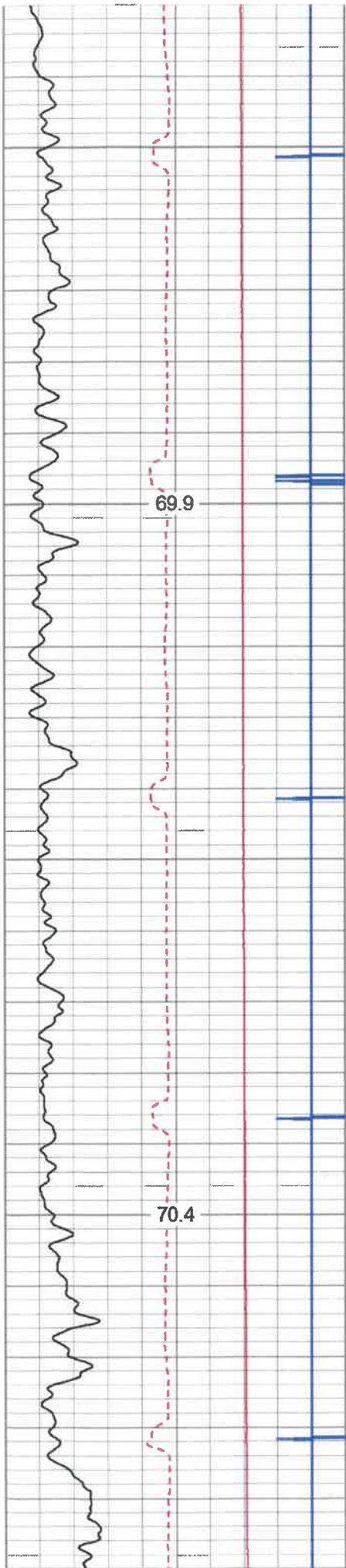


1500

1600

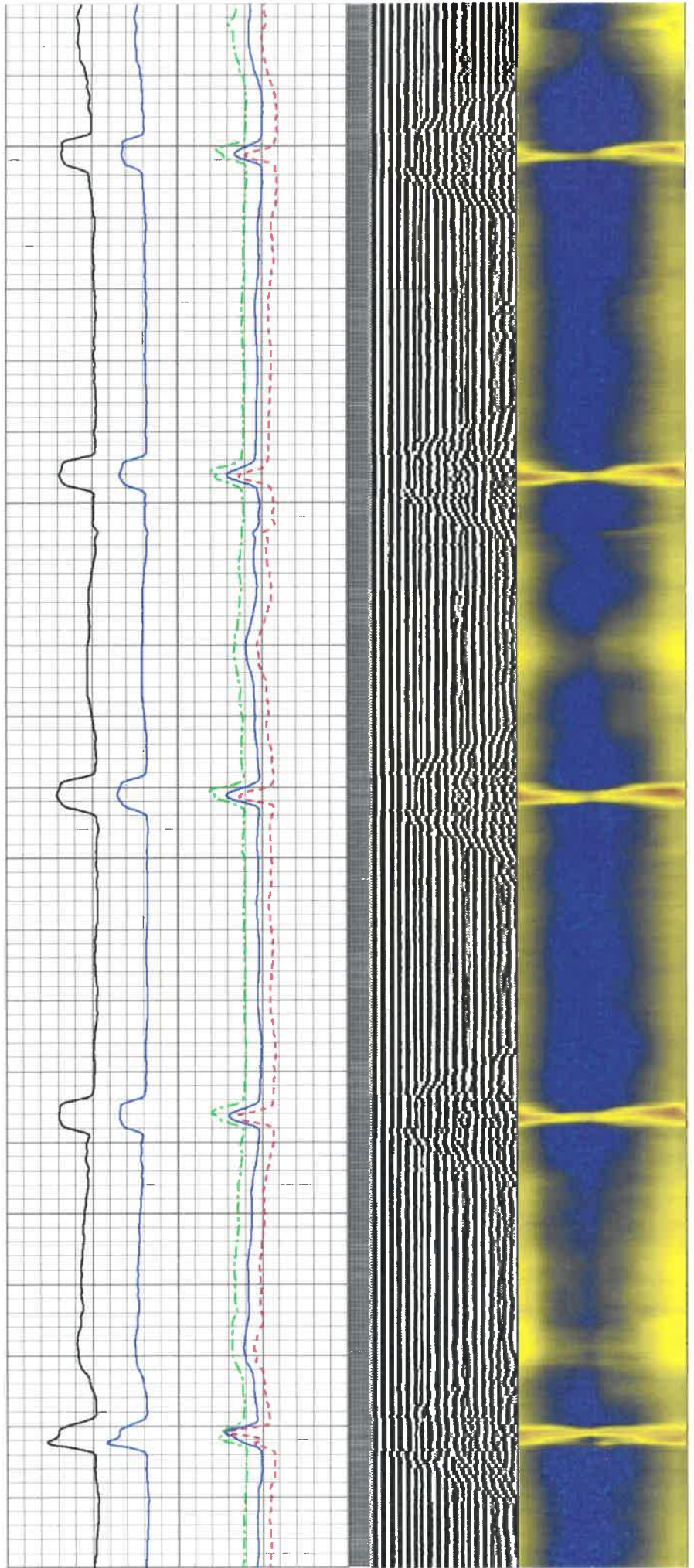
1700

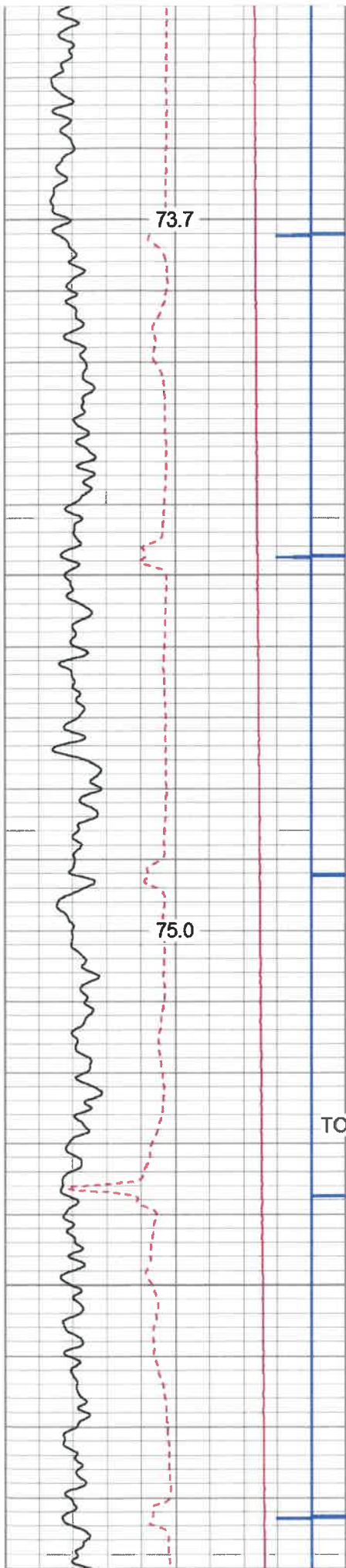




2000

2100





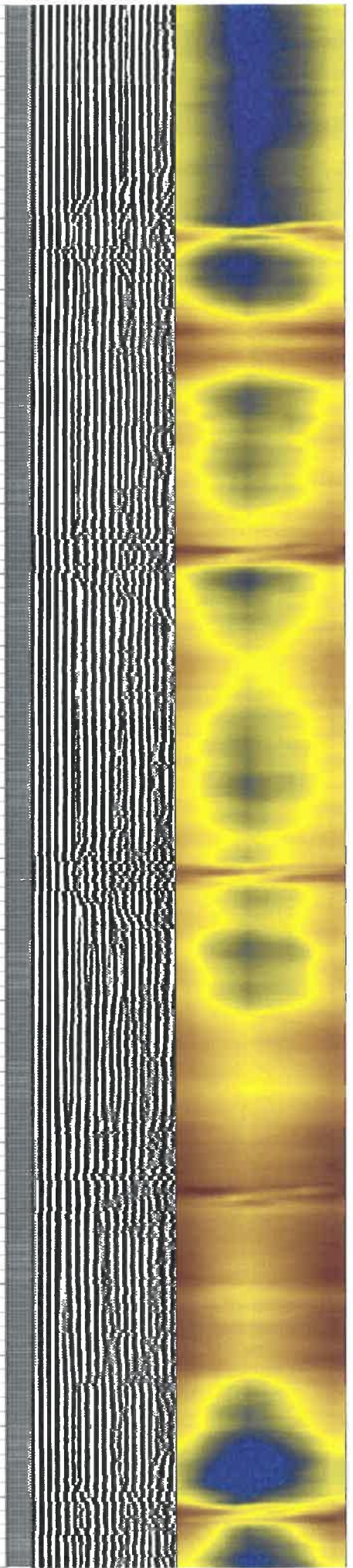
73.7

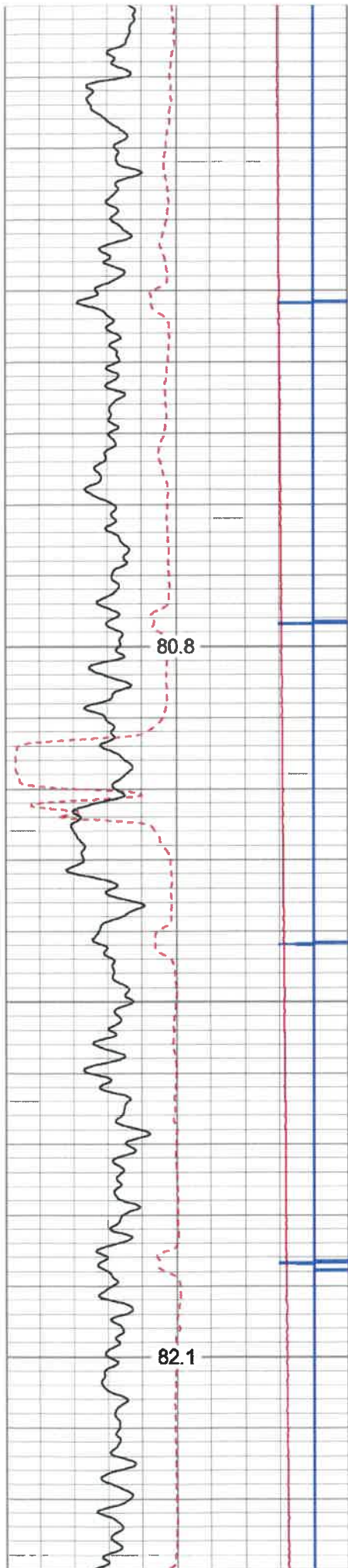
75.0

2400

2500

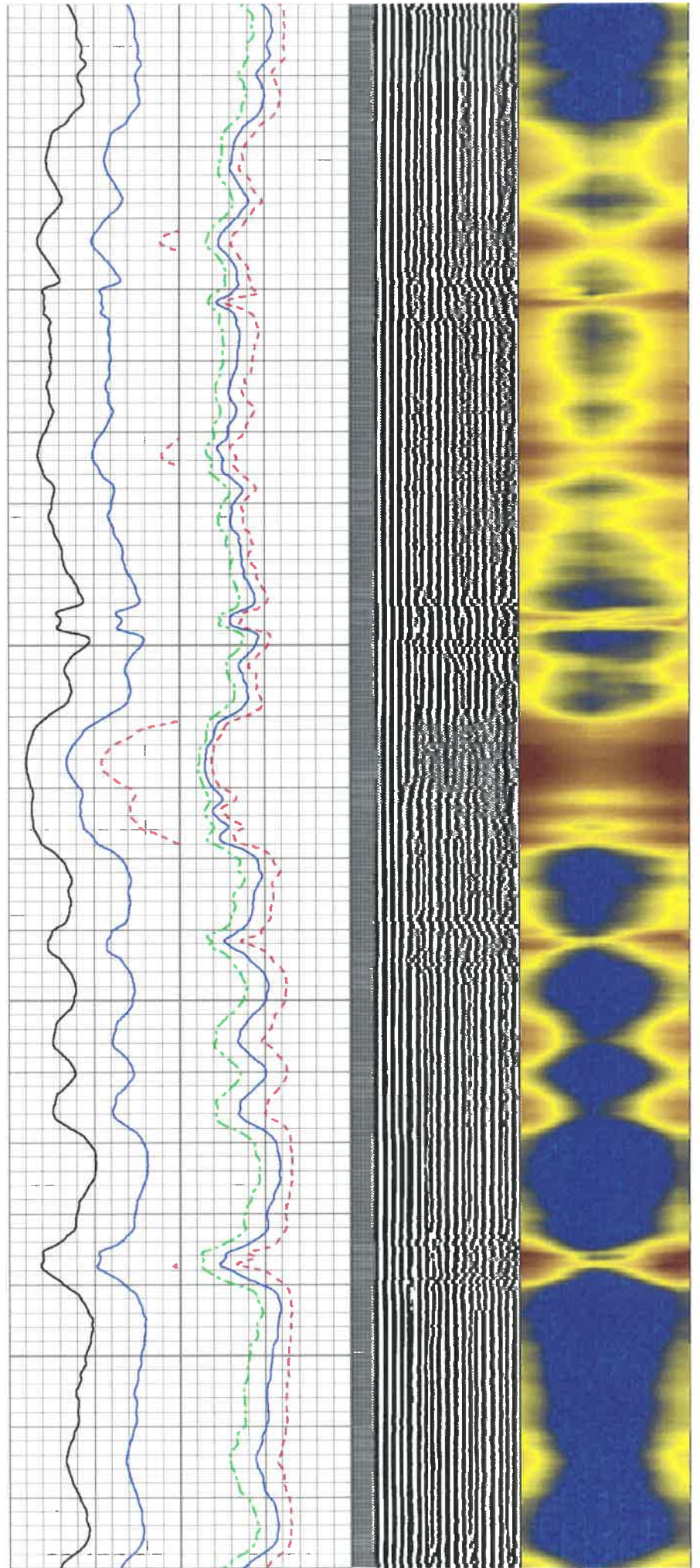
TOP OF CEMENT



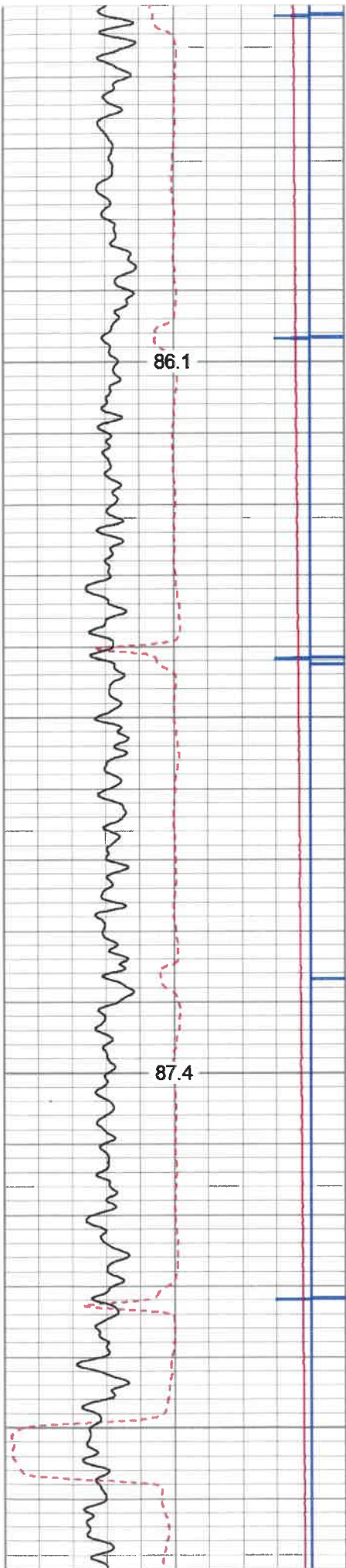


2900

3000

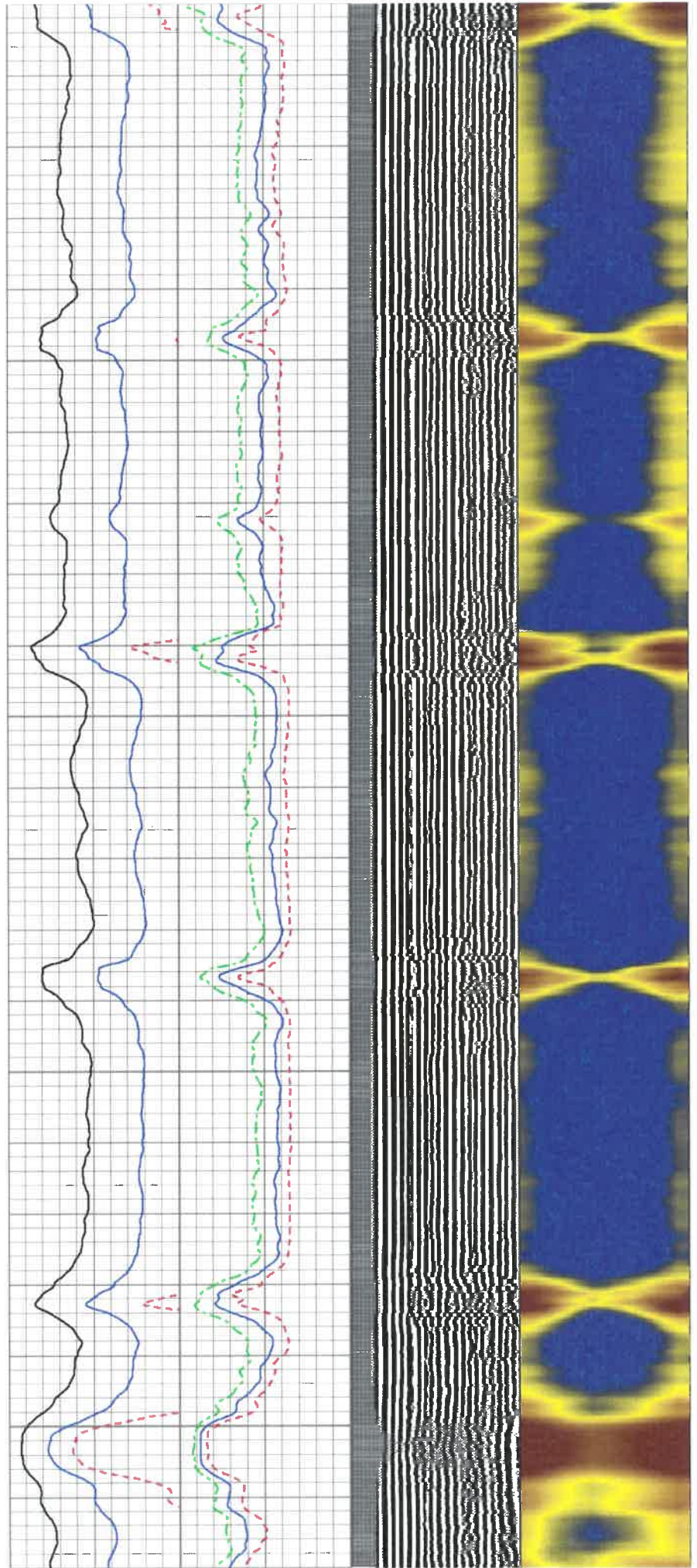


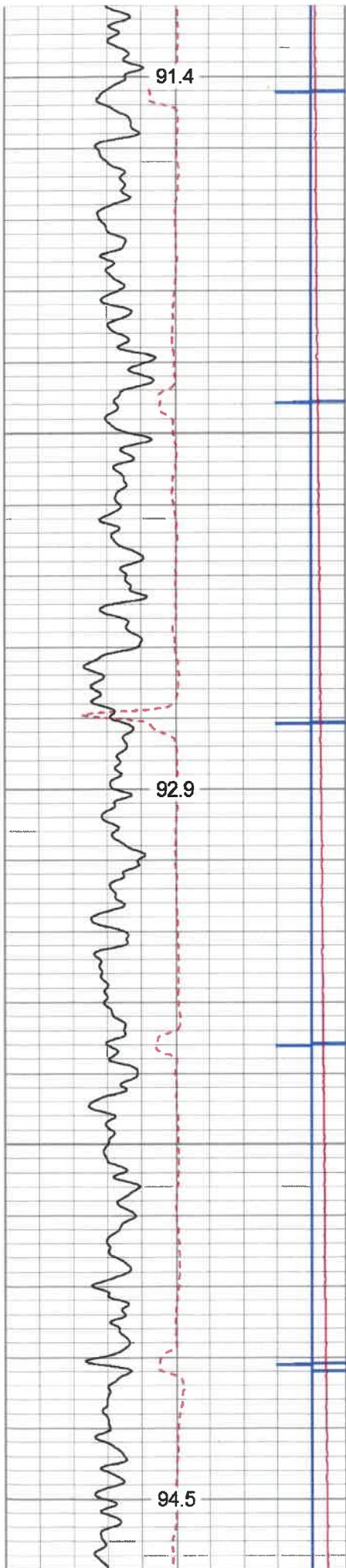




3300

3400

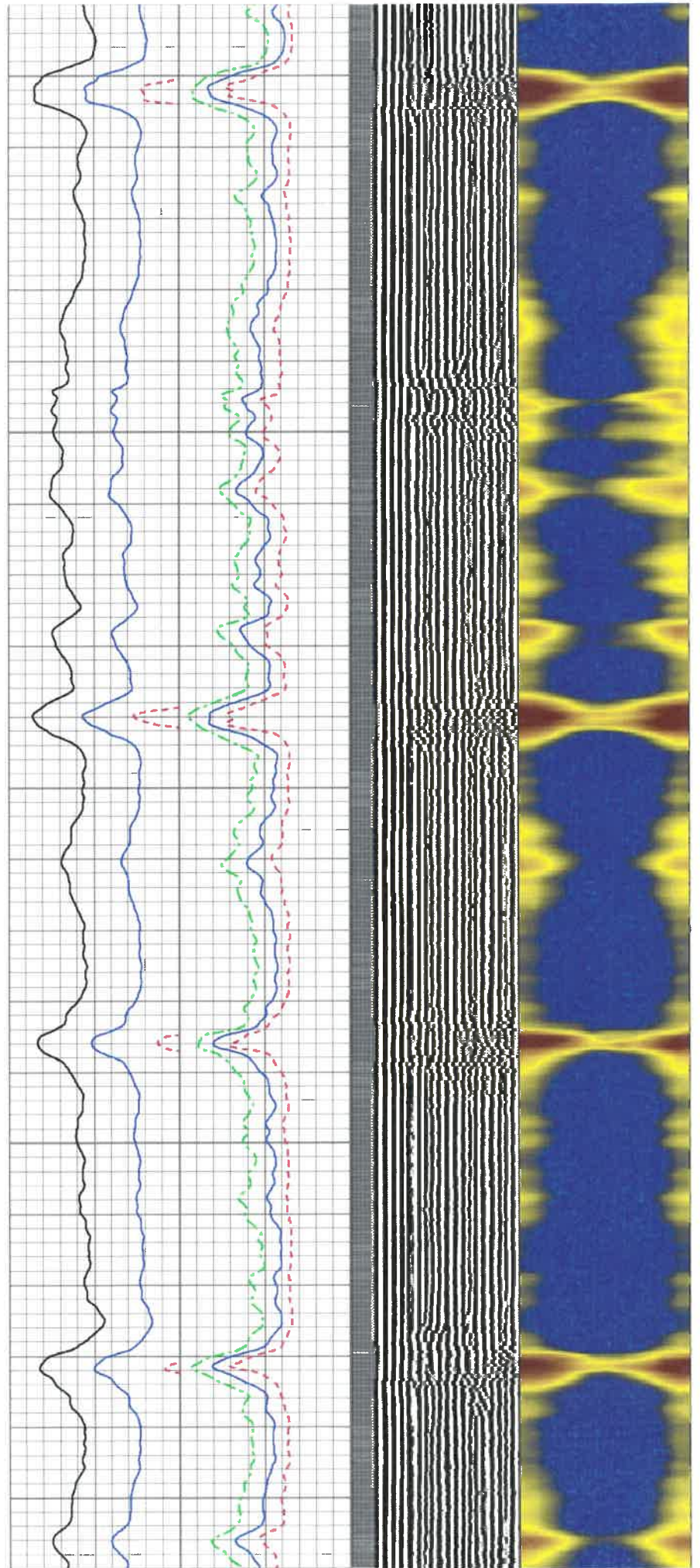


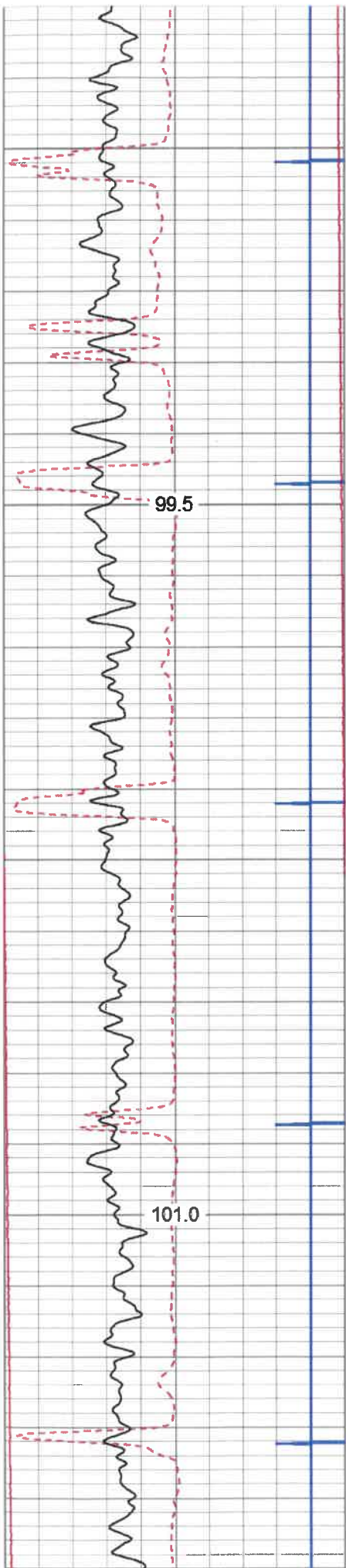


3700

3800

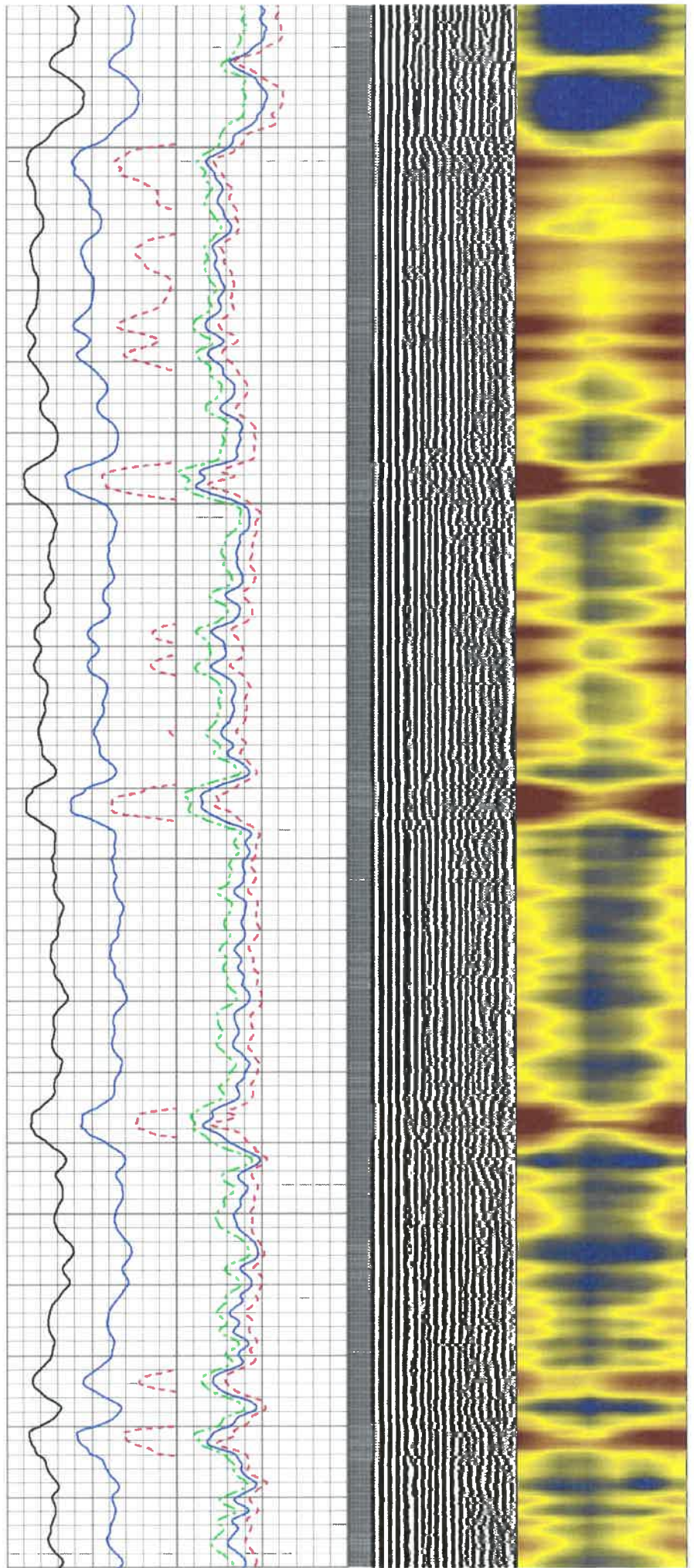
3900

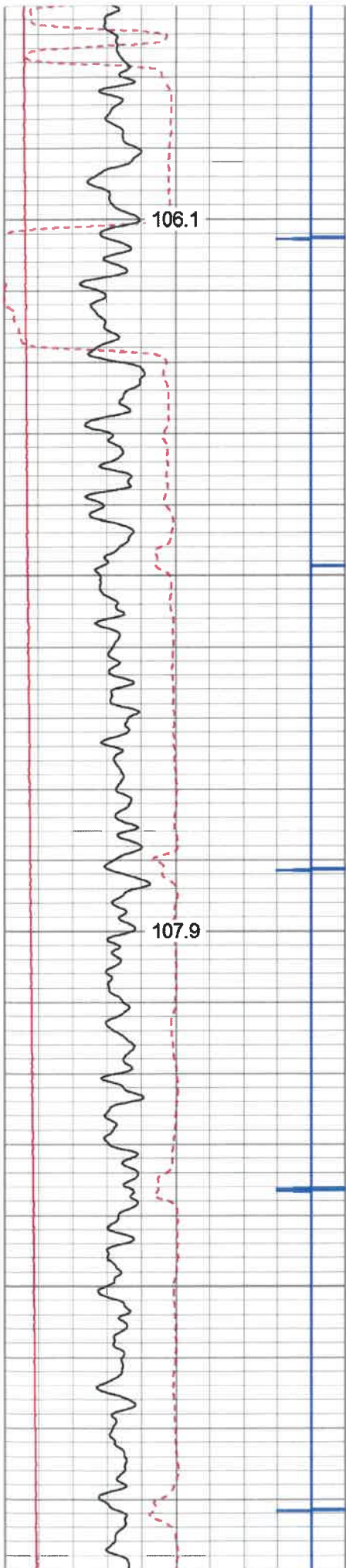




4200

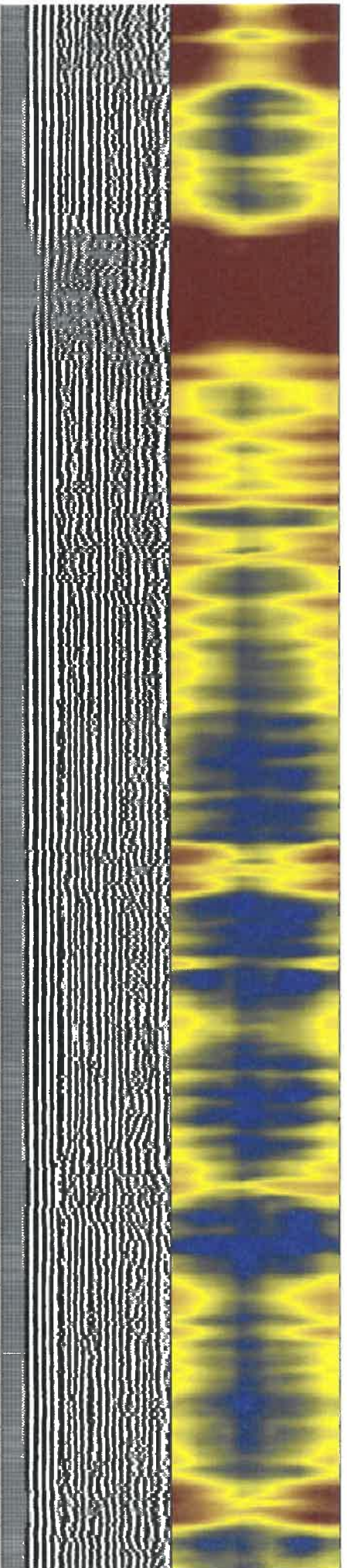
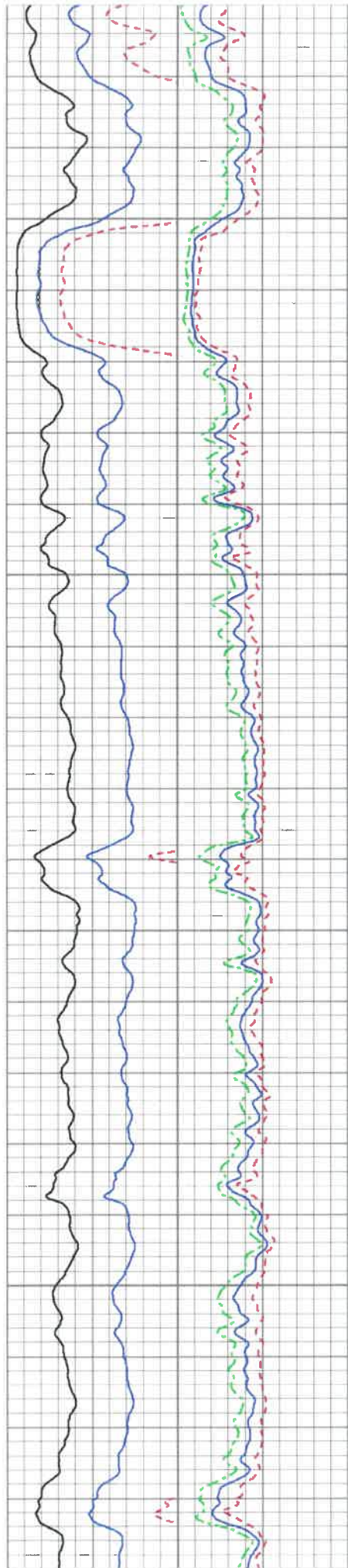
4300

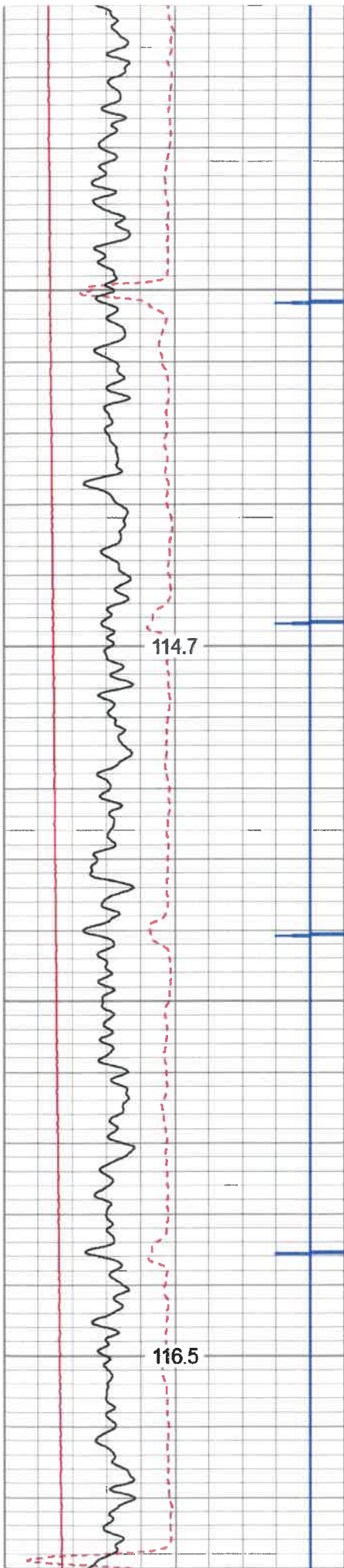




4600

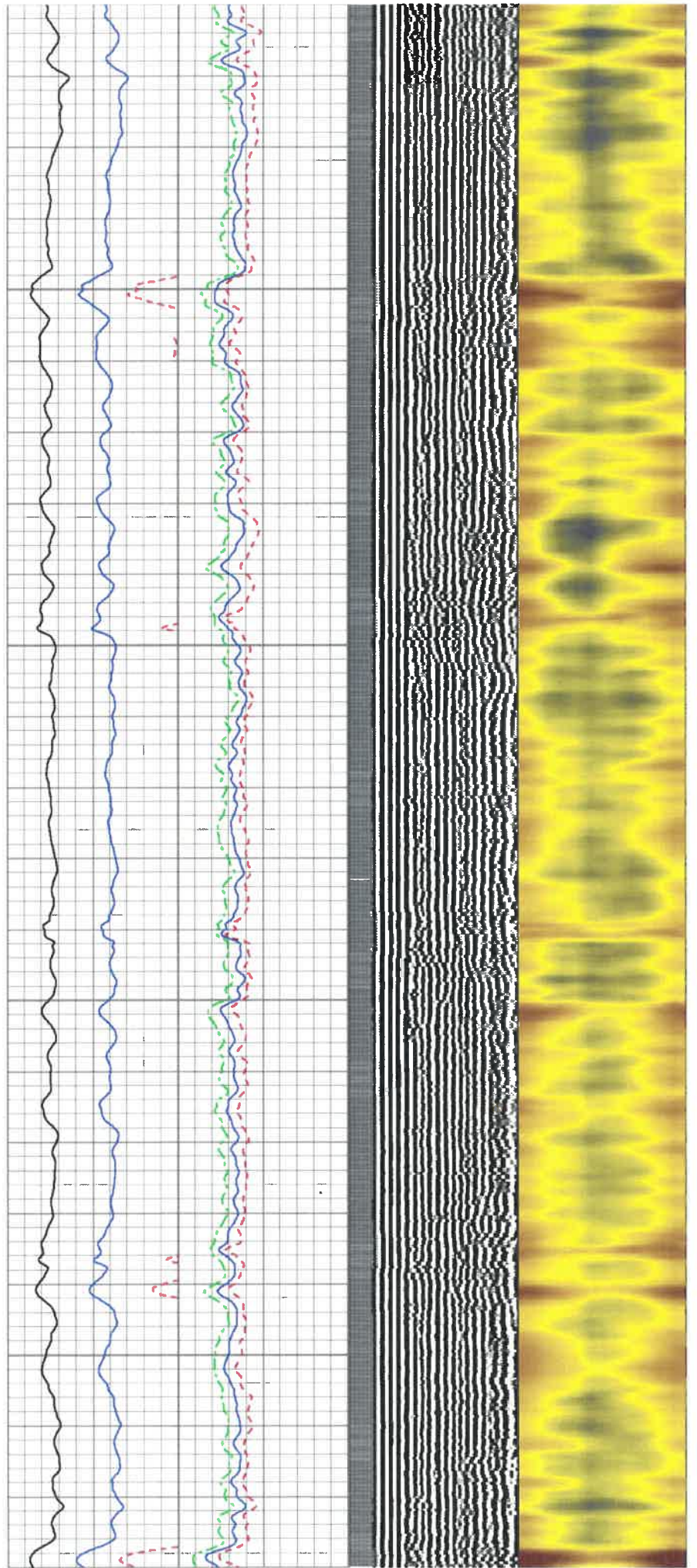
4700

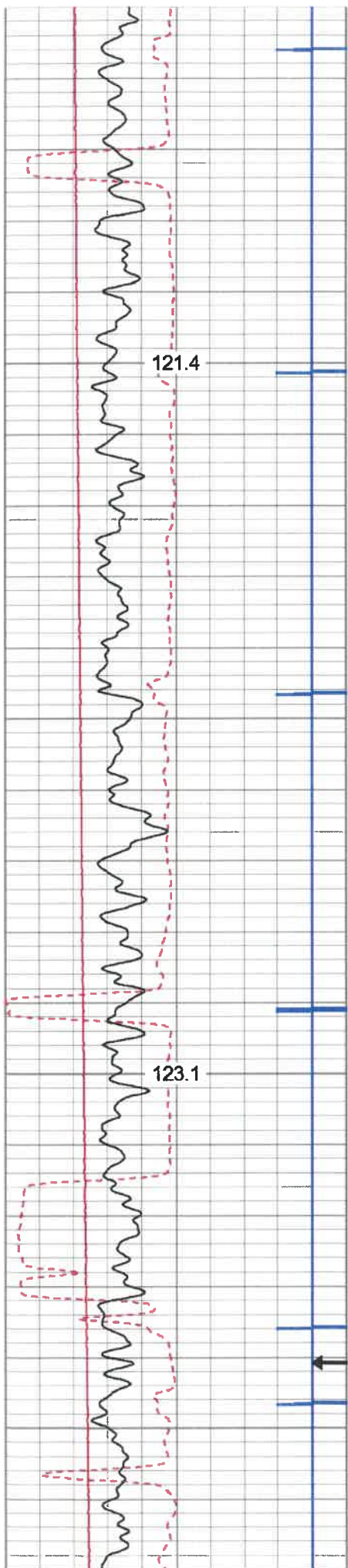




5100

5200

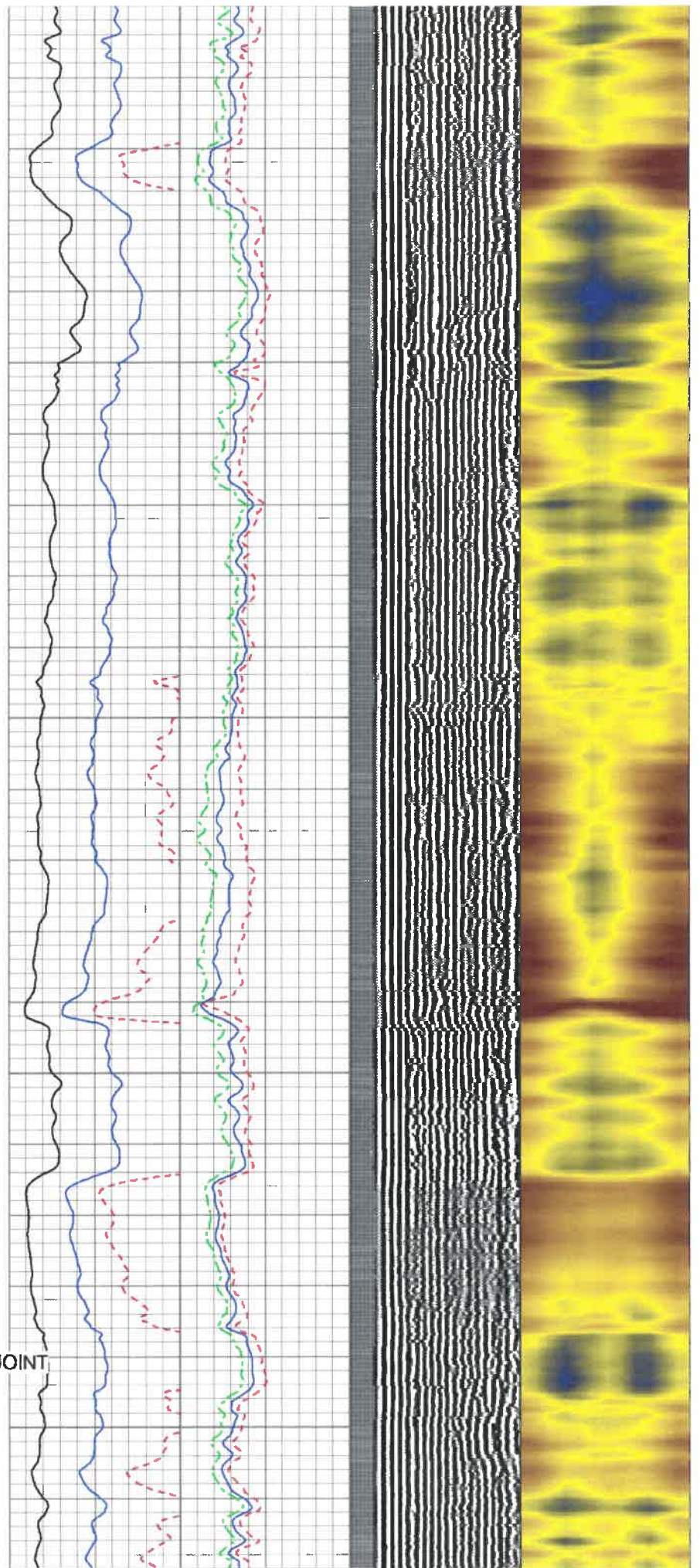


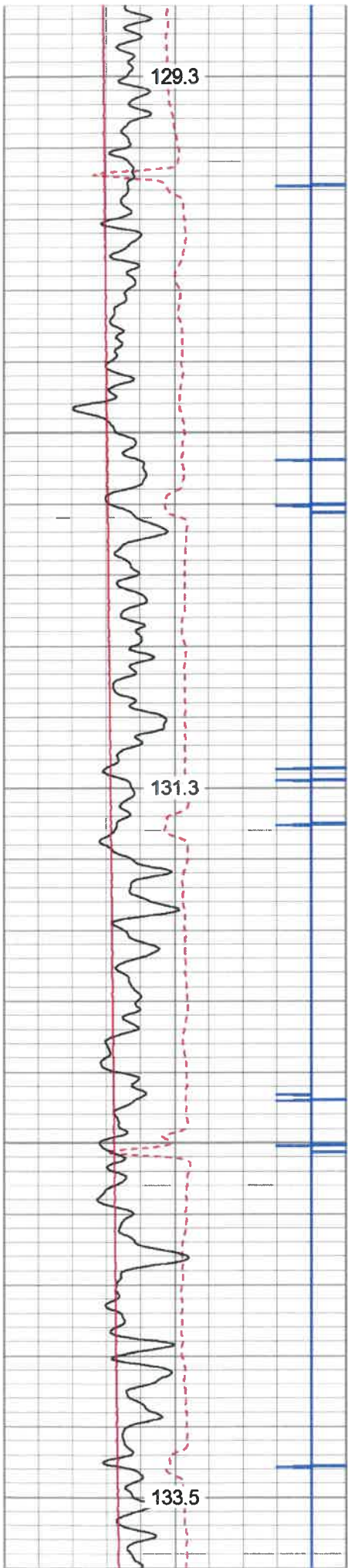


5500

5600

MARKER JOINT

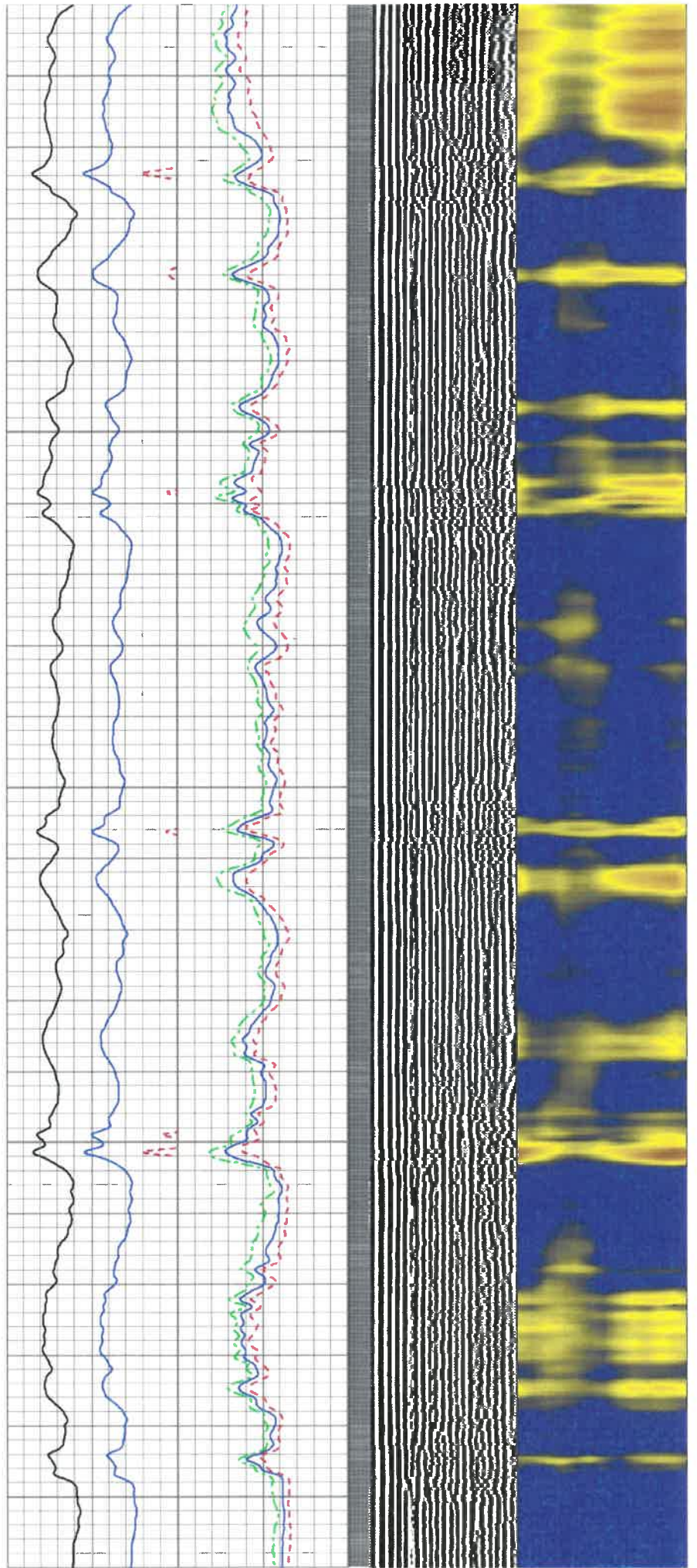


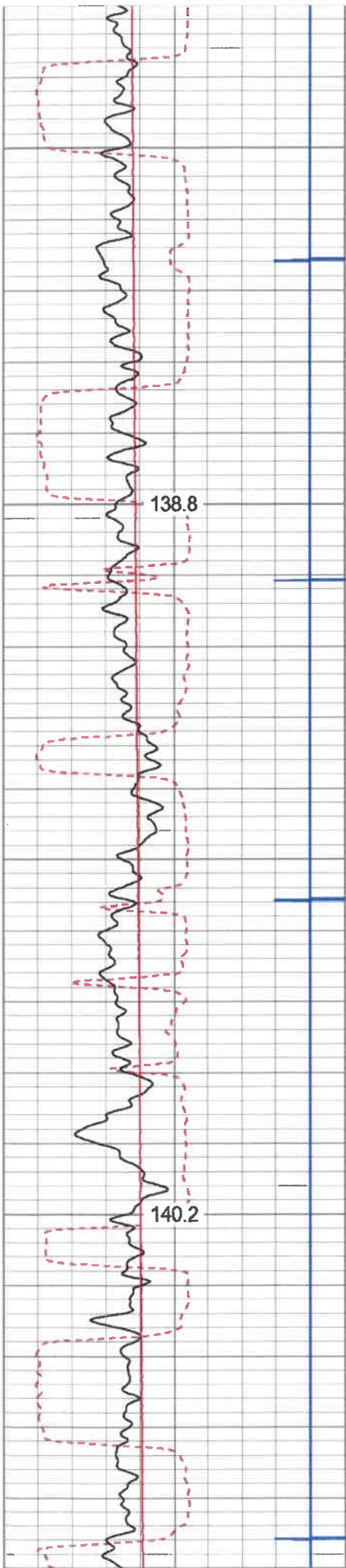


5900

6000

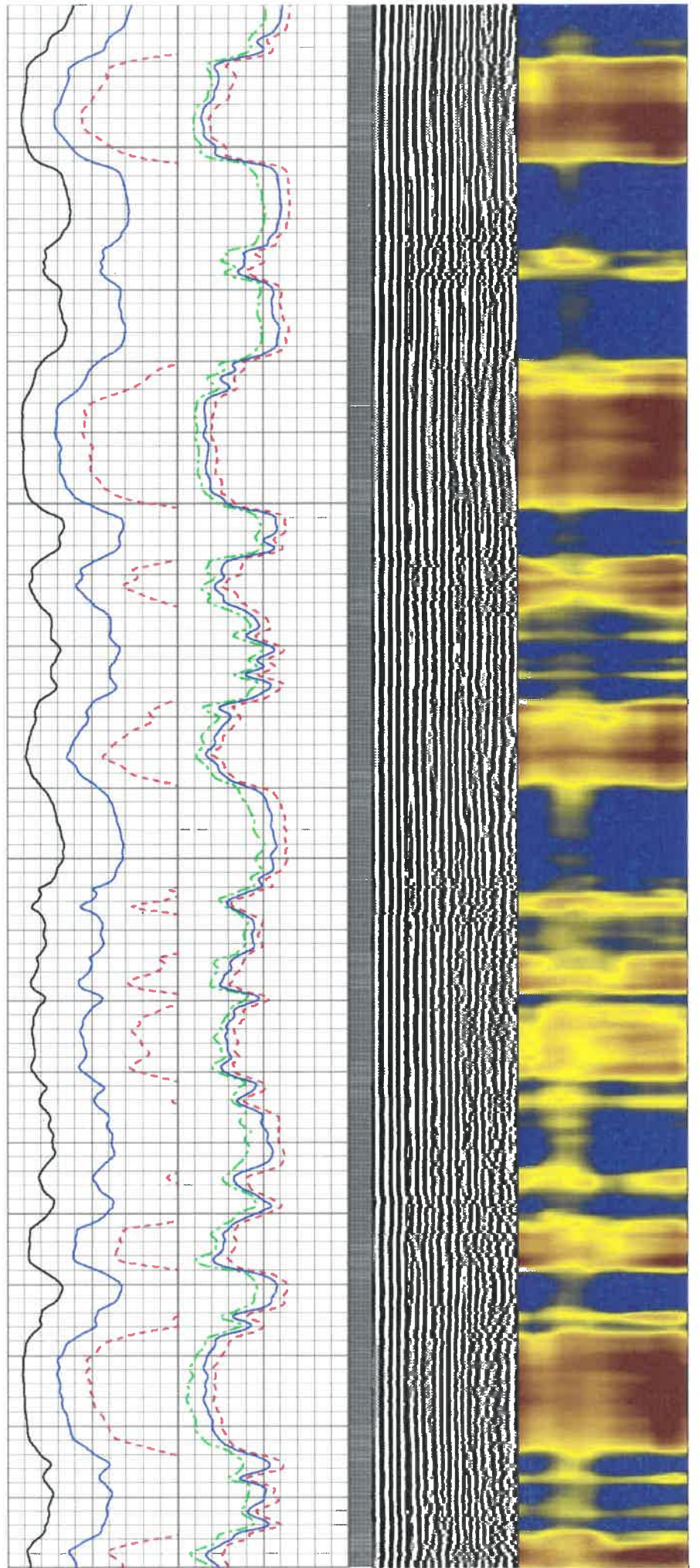
6100



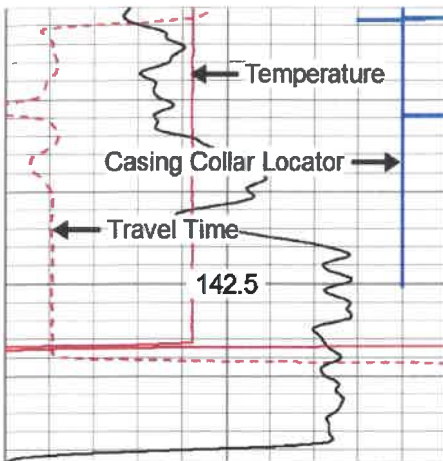


6400

6500



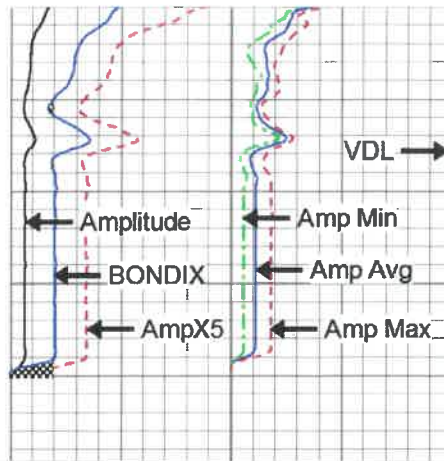




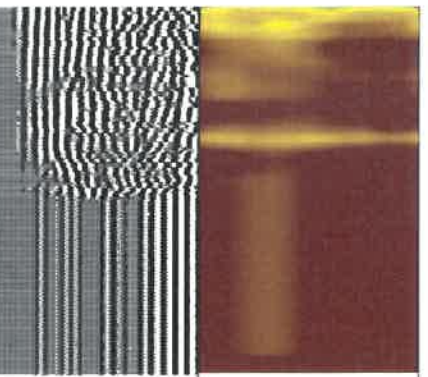
280	Travel Time (usec)	180
9	Casing Collars	-1
0	Gamma Ray	180
0	TEMP (degF)	100

TEMP  
(degF)

6800



Amplitude	0	Amp Avg	150
(mV)	100	Amp Max	150
AmpX5 (mV)	20	Amp Min	150
BONDIX	0		



Sector Map →

200	VDL	1200	1	Sector Map	12
			20		80



# REPEAT SECTION

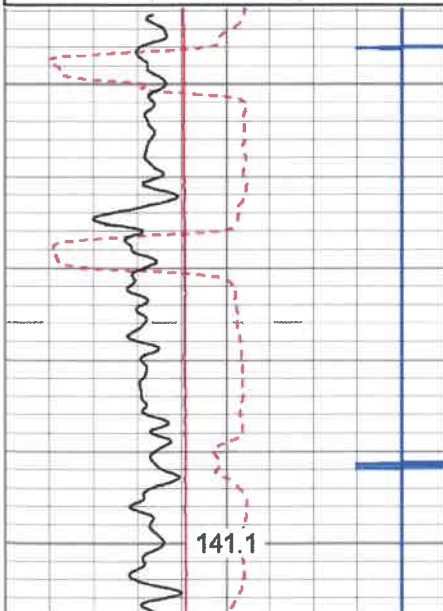
Database File: e:\kilska 2h.db  
 Dataset Pathname: pass2  
 Presentation Format: antero  
 Dataset Creation: Thu Oct 10 12:16:04 2019 by Log 7.0 B1  
 Charted by: Depth in Feet scaled 1:240

280	Travel Time (usec)	180
9	Casing Collars	-1
0	Gamma Ray	180
0	TEMP (degF)	100

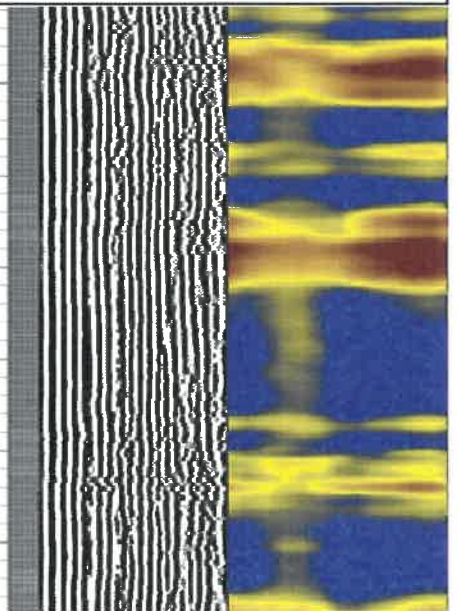
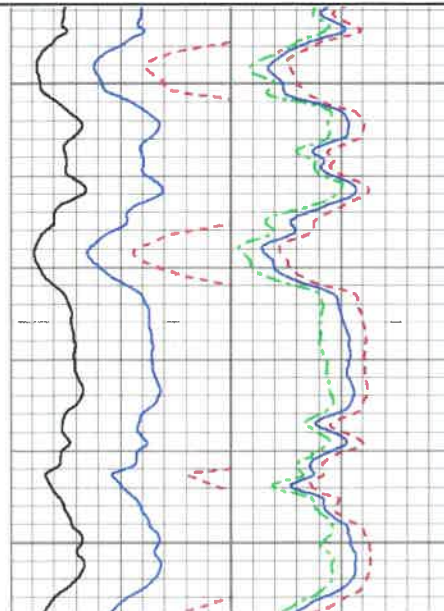
TEMP  
(degF)

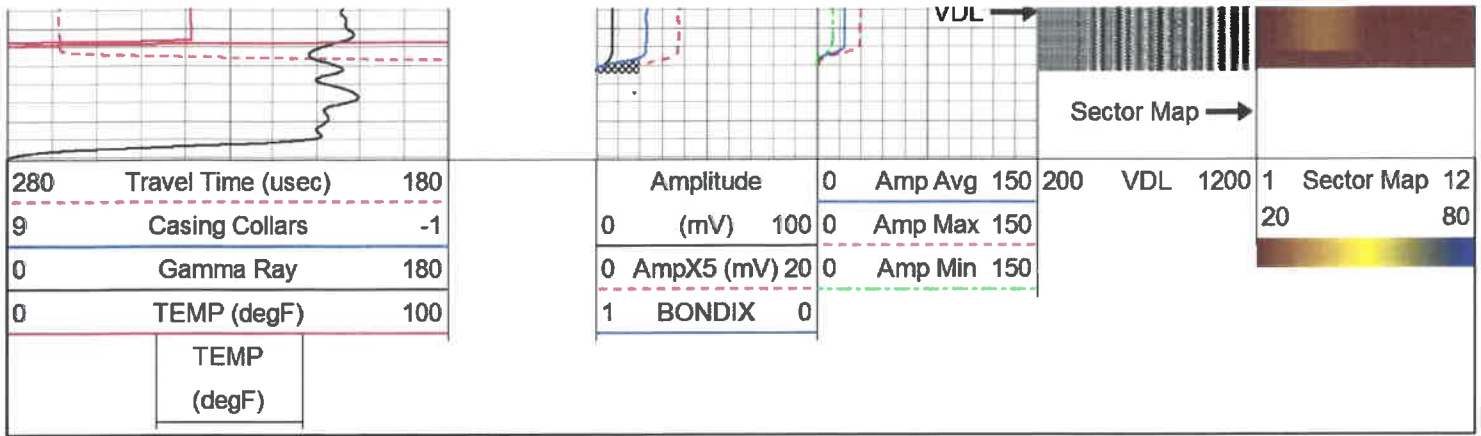
Amplitude	0	Amp Avg	150
(mV)	100	Amp Max	150
AmpX5 (mV)	20	Amp Min	150
BONDIX	0		

200	VDL	1200	1	Sector Map	12
			20		80



6600





Sensor	Offset (ft)	Schematic	Description	Len (ft)	OD (in)	Wt (lb)
CCL	18.93		CCL-312tekco (3.12TEKCO) Tekco 3 1/8" 450 Deg. "F" SmCo Logging CCL	1.82	3.12	25.00
			2.75 2 3/4" Tekco Adjustable Centralizer	2.73	2.75	25.00
TEMP	12.77					
WVFS1	11.48		SCBL-Tek12 (IOL40-05) Tekco 400 Deg F 12 Sector RIB with Temp	9.13	3.25	135.00
WVFS2	11.48					
WVFS3	11.48					
WVFS4	11.48					
WVFS5	11.48					
WVFS6	11.48					
WVFS7	11.48					
WVFS8	11.48					
WVFS9	11.48					
WVFS10	11.48					
WVFS11	11.48					
WVFS12	11.48					
WVF3FT	10.73					
WVFCAL	10.73					
WVF5FT	9.73					
WVFTEMP	6.40					
WVFSYNC	6.40		2.75 2 3/4" Tekco Adjustable Centralizer	2.73	2.75	25.00