



**RADIAL CEMENT BOND / CCL
GAMMA RAY / VDL**

Company ANTERO RESOURCES CORPORATION
Well KILSKA 1H
Field MARCELLUS
County TYLER
State W.V.

Company ANTERO RESOURCES CORPORATION
Well KILSKA 1H
Field MARCELLUS
County TYLER State W.V.

Location: API #: 4709502582

Other Services

SEC	TWP	RGE	Elevation
Permanent Datum	G.L.	Elevation	1009'
Log Measured From	K.B.	D.F.	1039'
Drilling Measured From	K.B. OF 30'	G.L.	1009'

Date	10/10/19
Run Number	ONE
Depth Driller	21609'
Depth Logger	6800'
Bottom Logged Interval	6800'
Top Log Interval	SURFACE
Open Hole Size	N/A
Type Fluid	H2O
Density / Viscosity	N/A
Max. Recorded Temp.	141 DEG
Estimated Cement Top	3545'
Time Well Ready	N/A
Time Logger on Bottom	N/A
Equipment Number	340
Location	BRIDGEPORT, WV
Recorded By	J. BOGGS
Witnessed By	BRYAN HEMARD

Borehole Record		Casing Record	
Run Number	Bit	From	To
		13 3/8"	574'
		9 5/8"	2593'
		5 1/2"	21609'

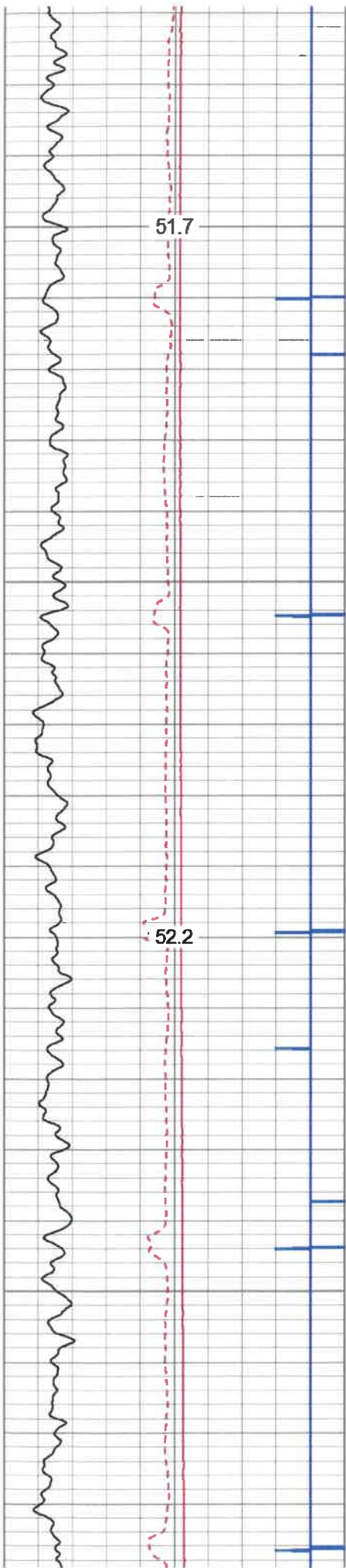
<<< Fold Here >>>

All interpretations are opinions based on inferences from electrical or other measurements and we cannot and do not guarantee the accuracy or correctness of any interpretation, and we shall not, except in the case of gross or willful negligence on our part, be liable or responsible for any loss, costs, damages, or expenses incurred or sustained by anyone resulting from any interpretation made by any of our officers, agents or employees. These interpretations are also subject to our general terms and conditions set out in our current Price Schedule.

Comments

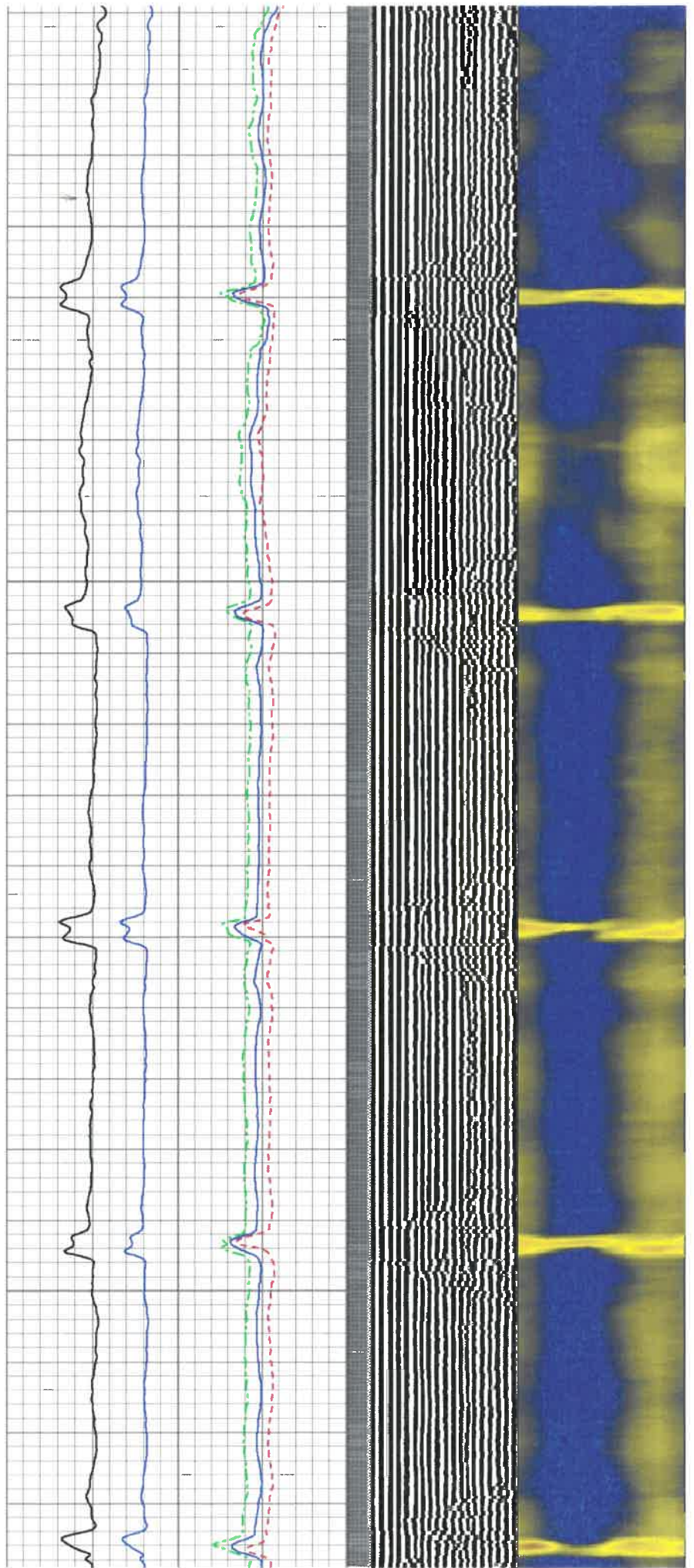
THANK YOU FOR USING KLX ENERGY SERVICES
TOP OF CEMENT @ 3545'
MARKER JOINT @ 5511'-5522'
BOTTOM HOLE TEMP- 141 DEG

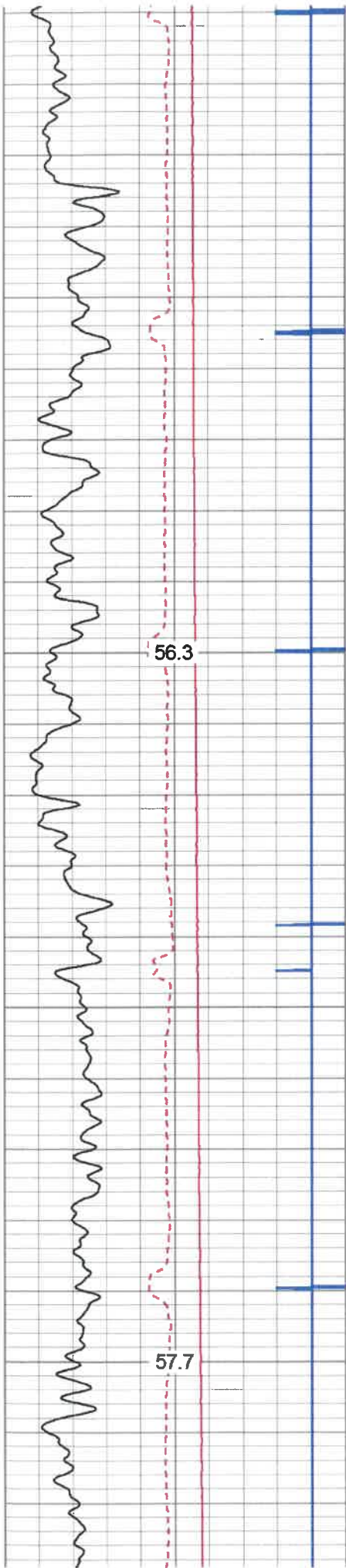




200

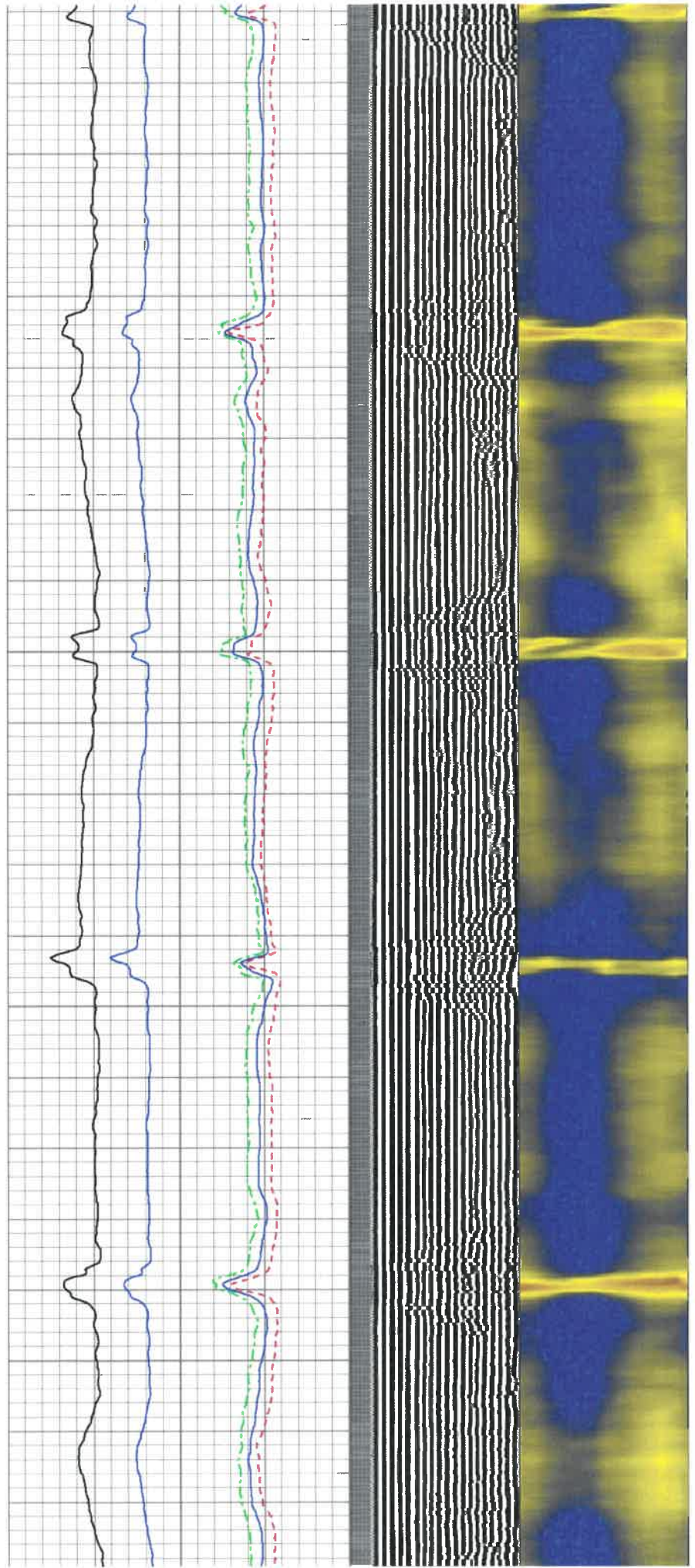
300

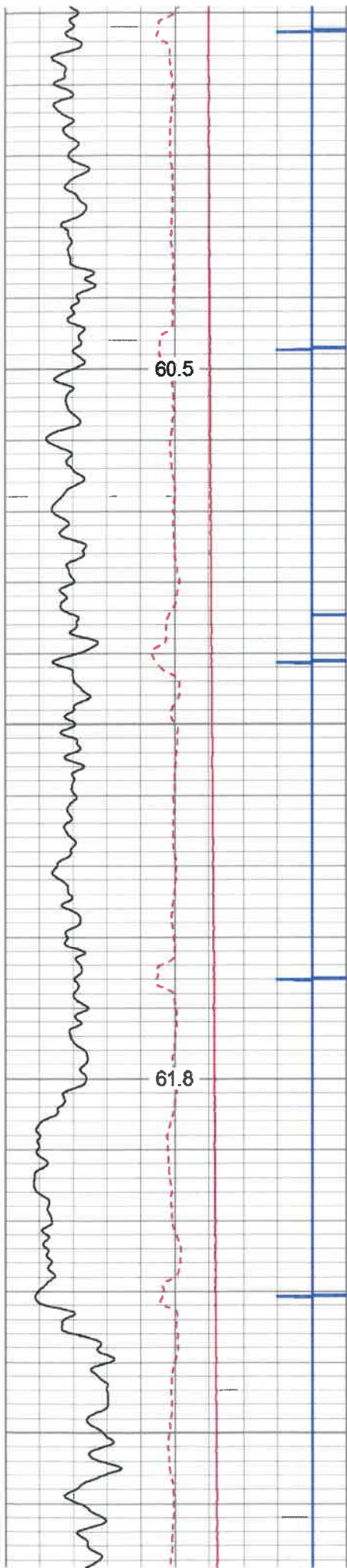




700

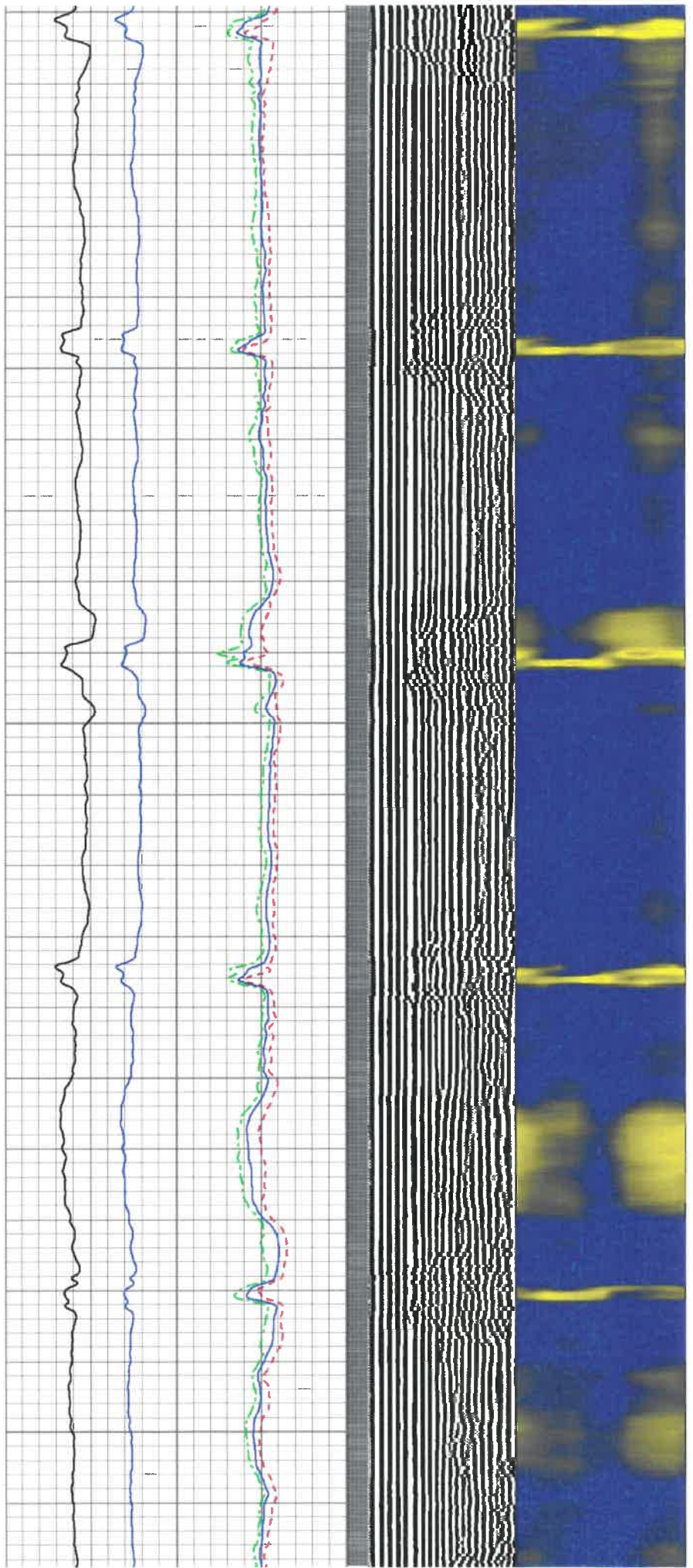
800

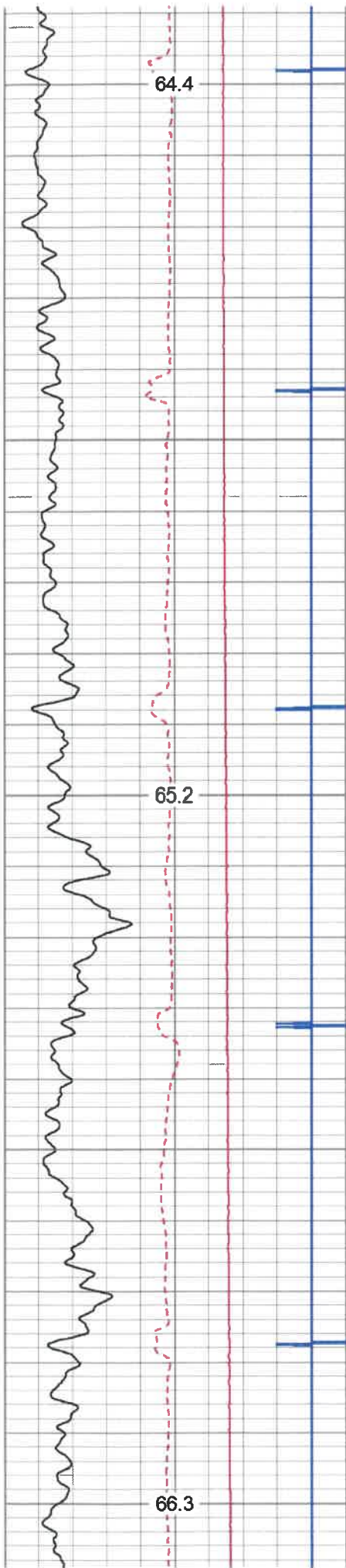




1100

1200

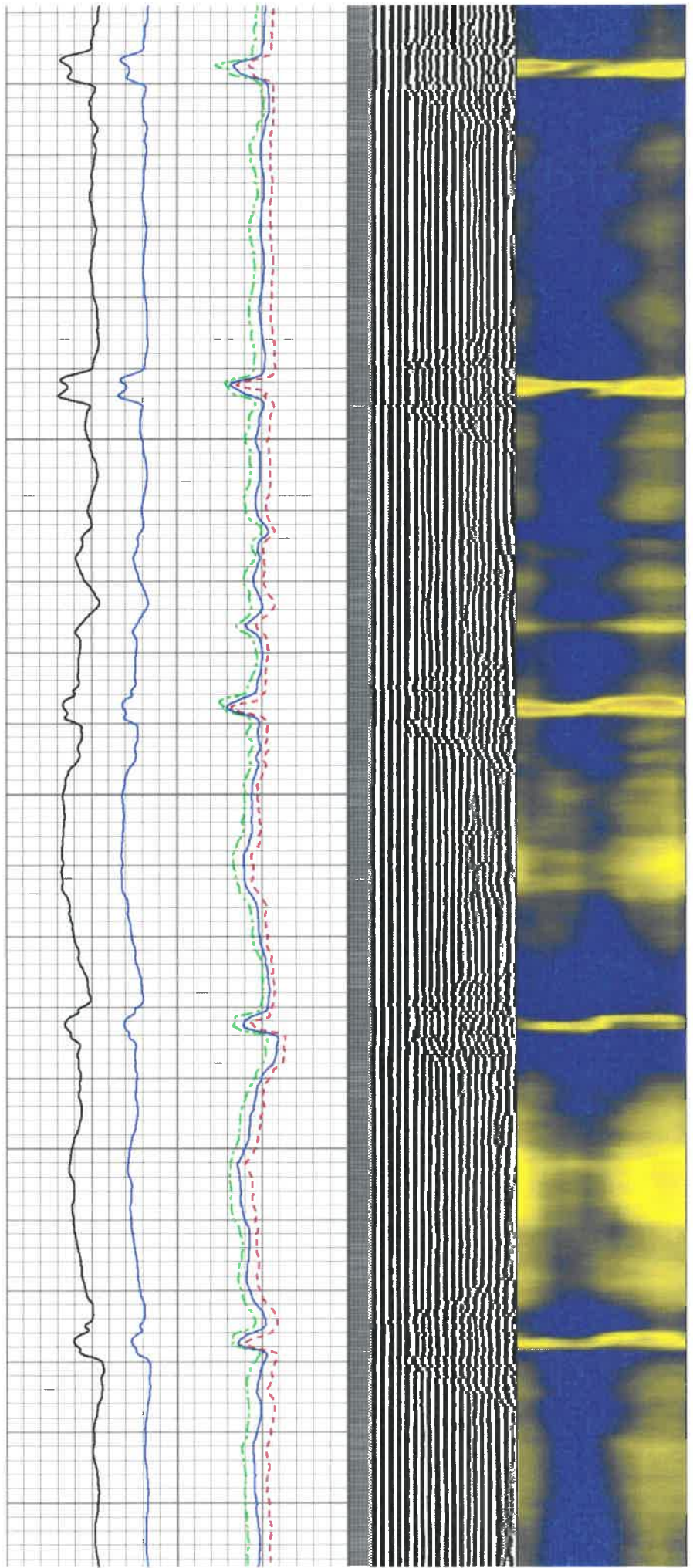


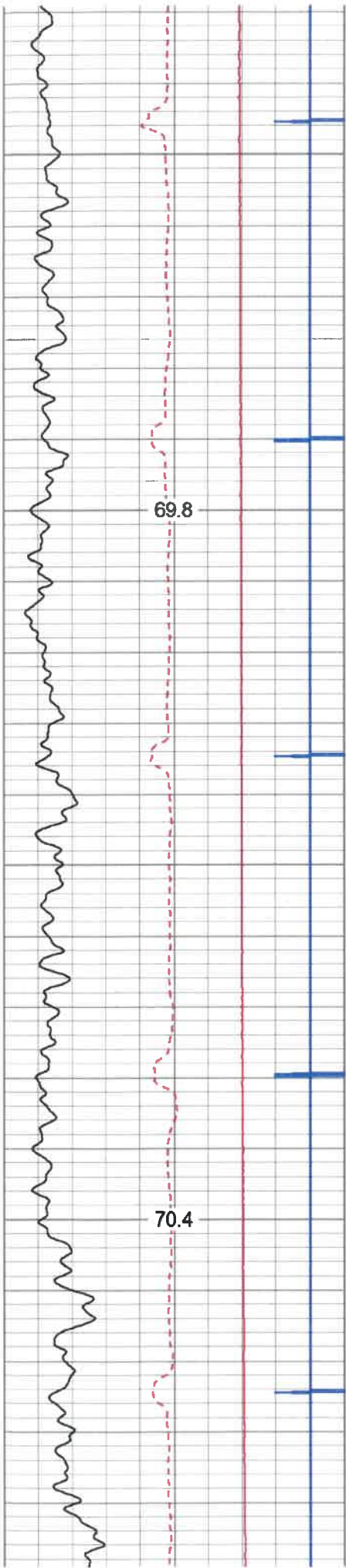


1500

1600

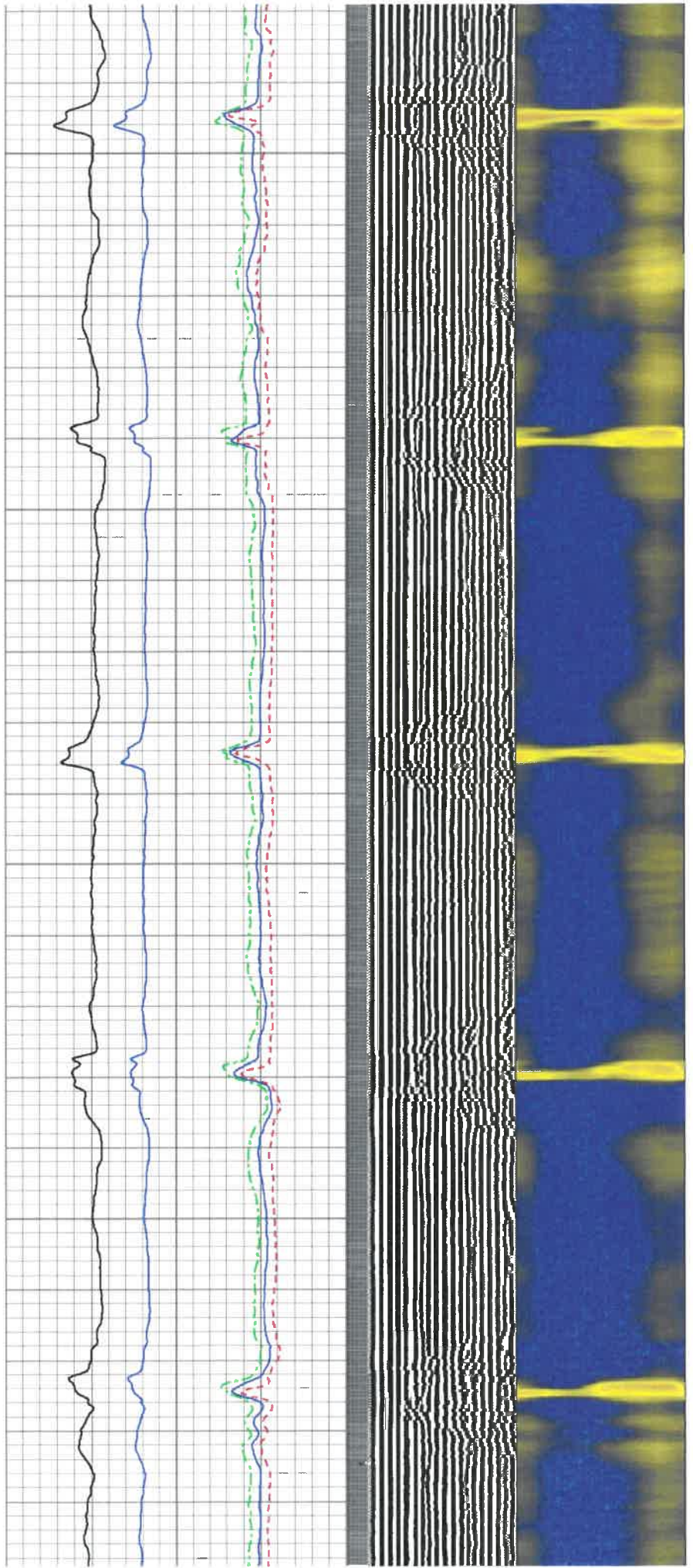
1700

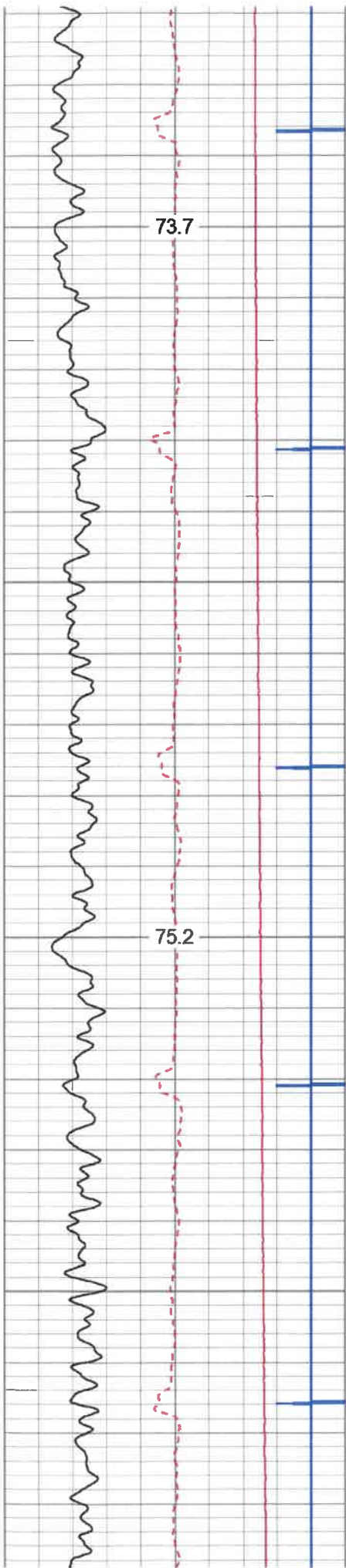




2000

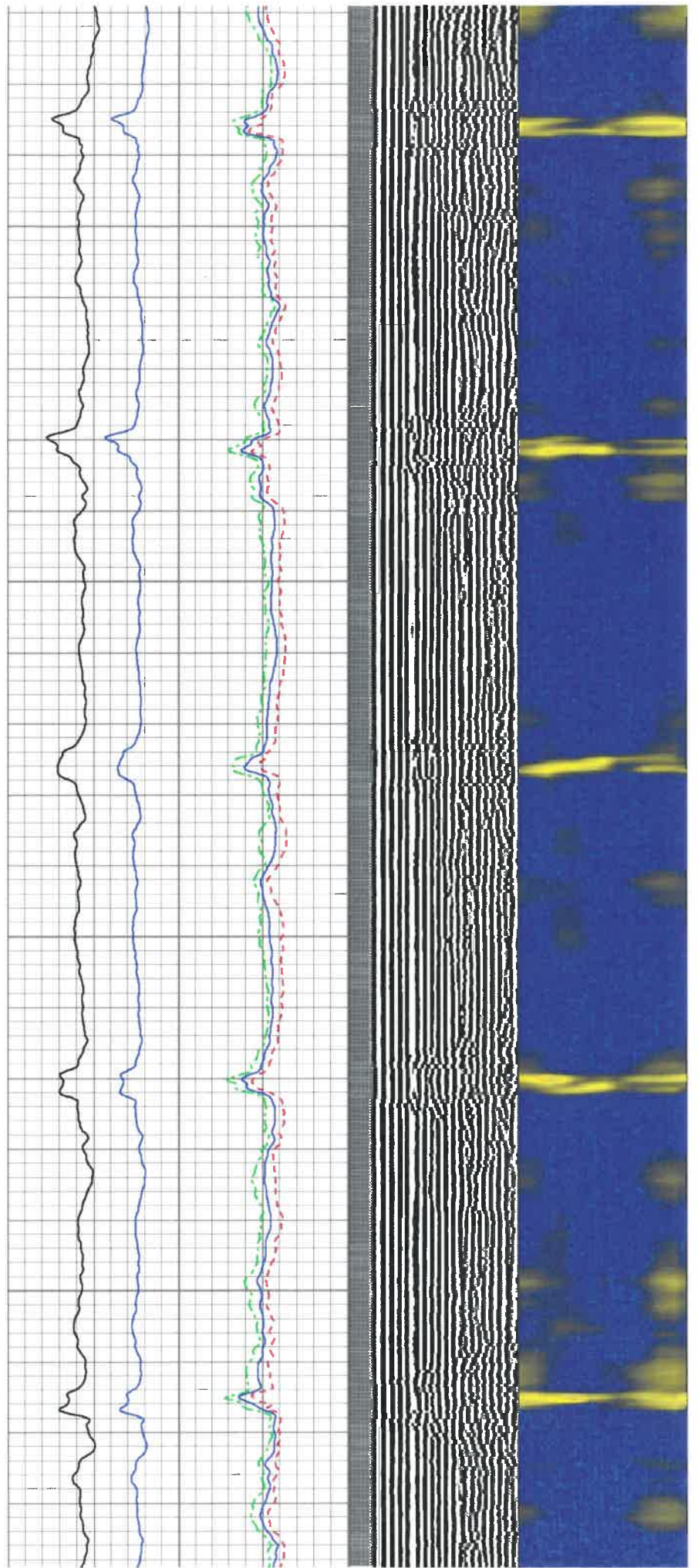
2100

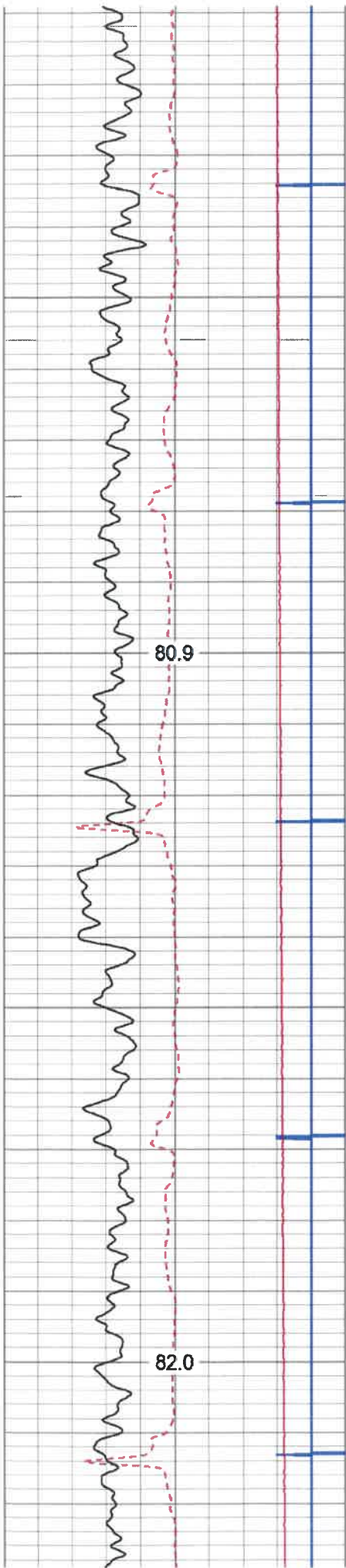




2400

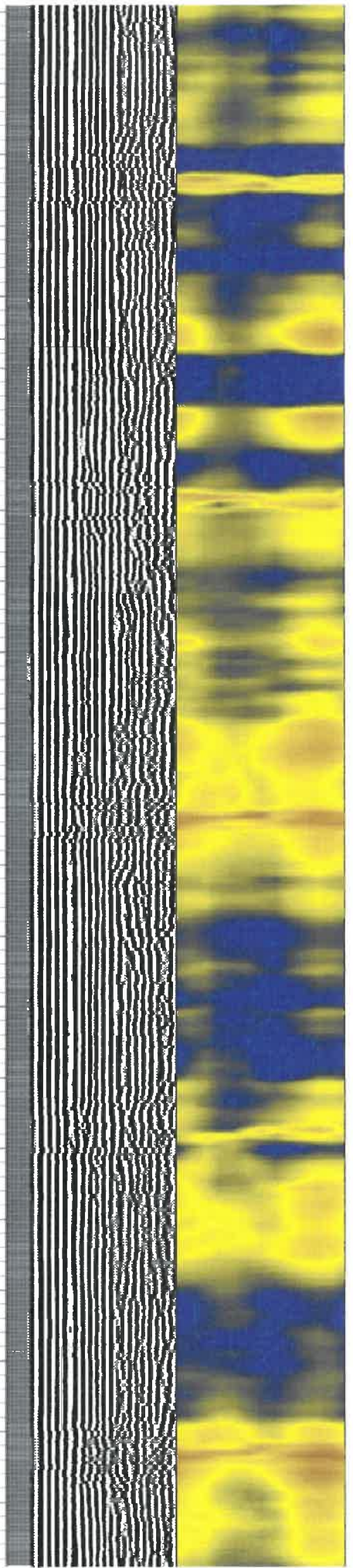
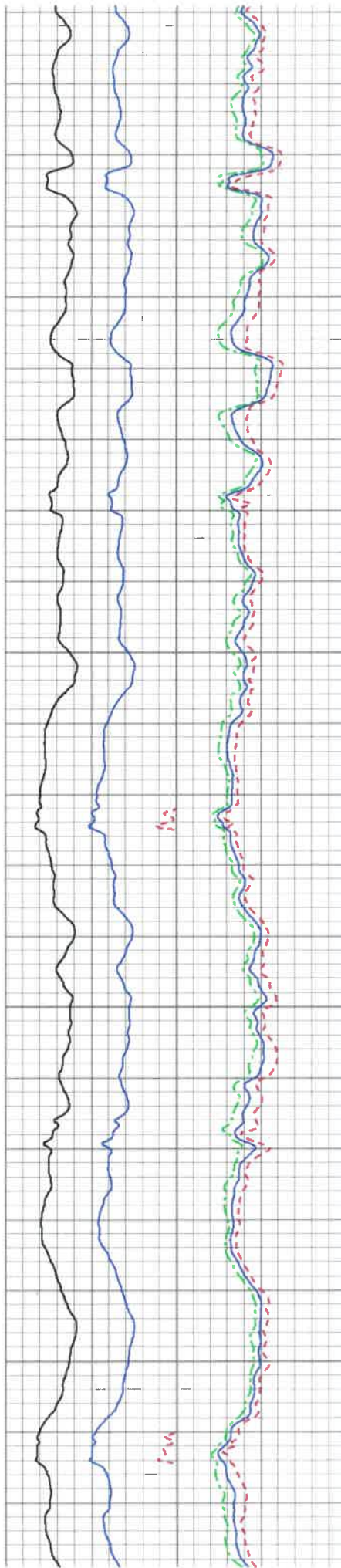
2500

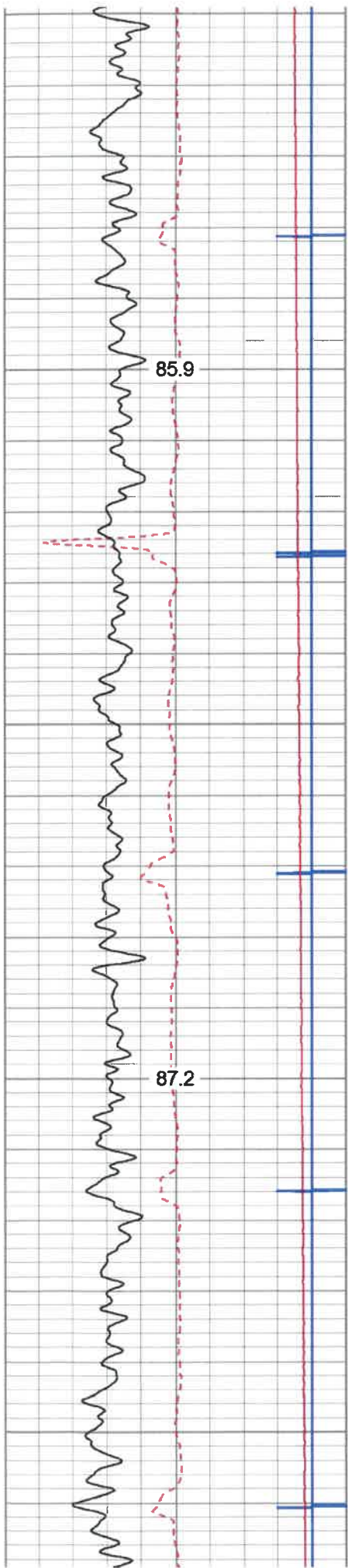




2900

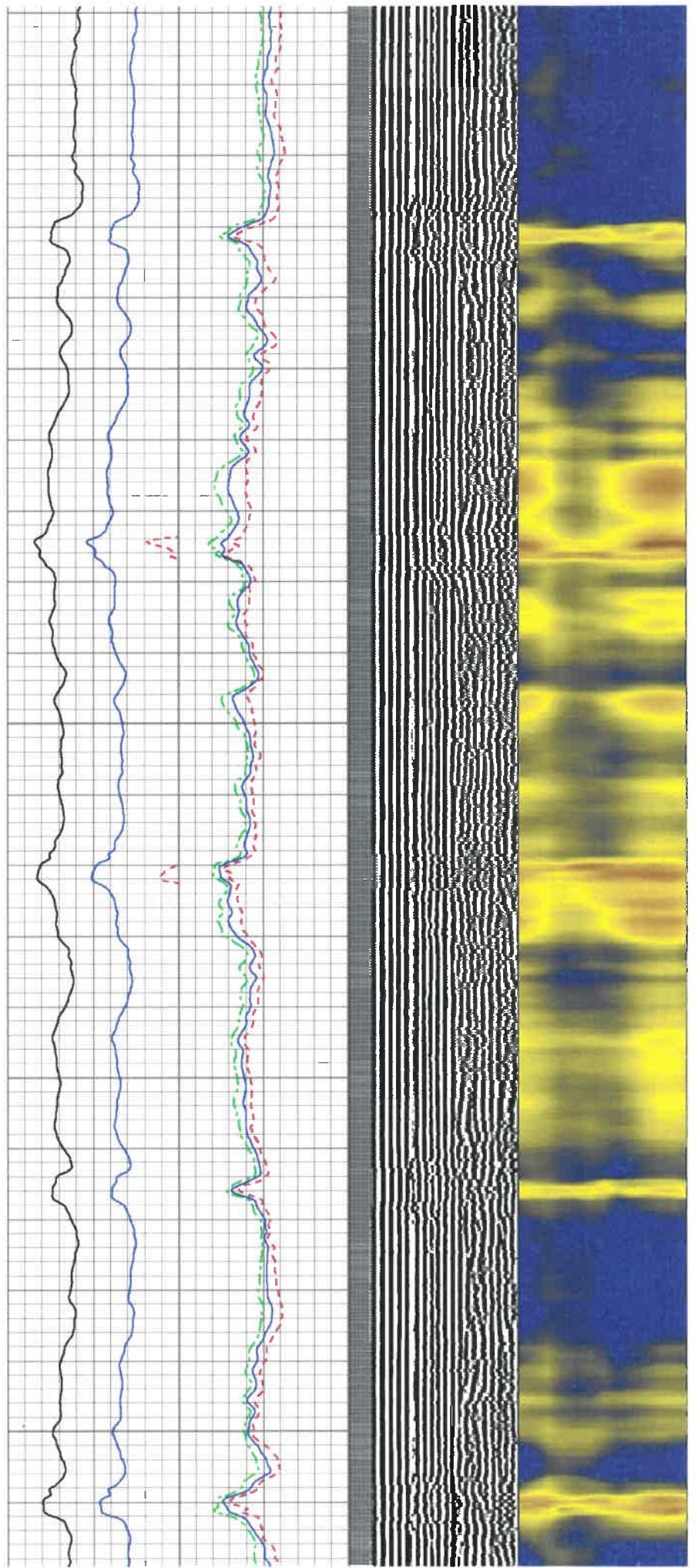
3000

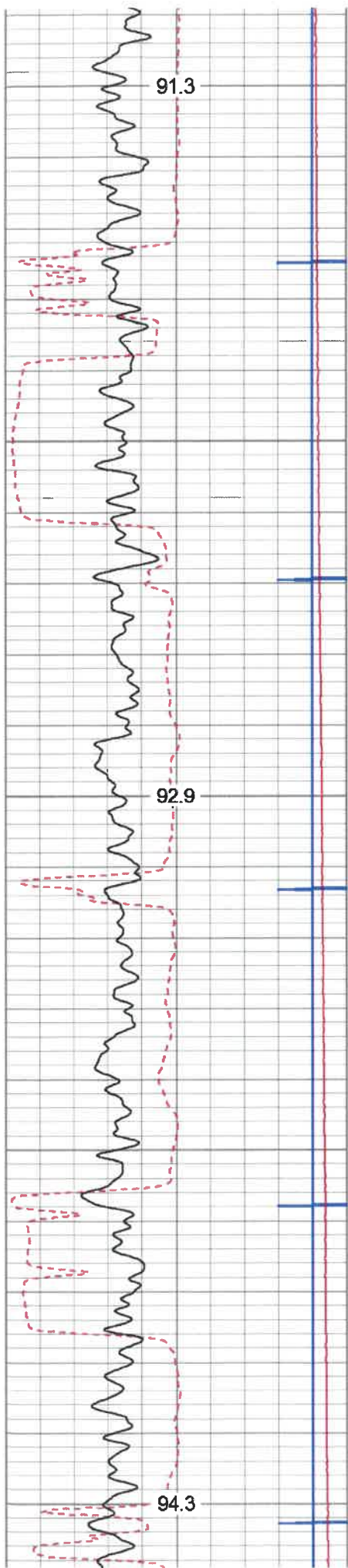




3300

3400

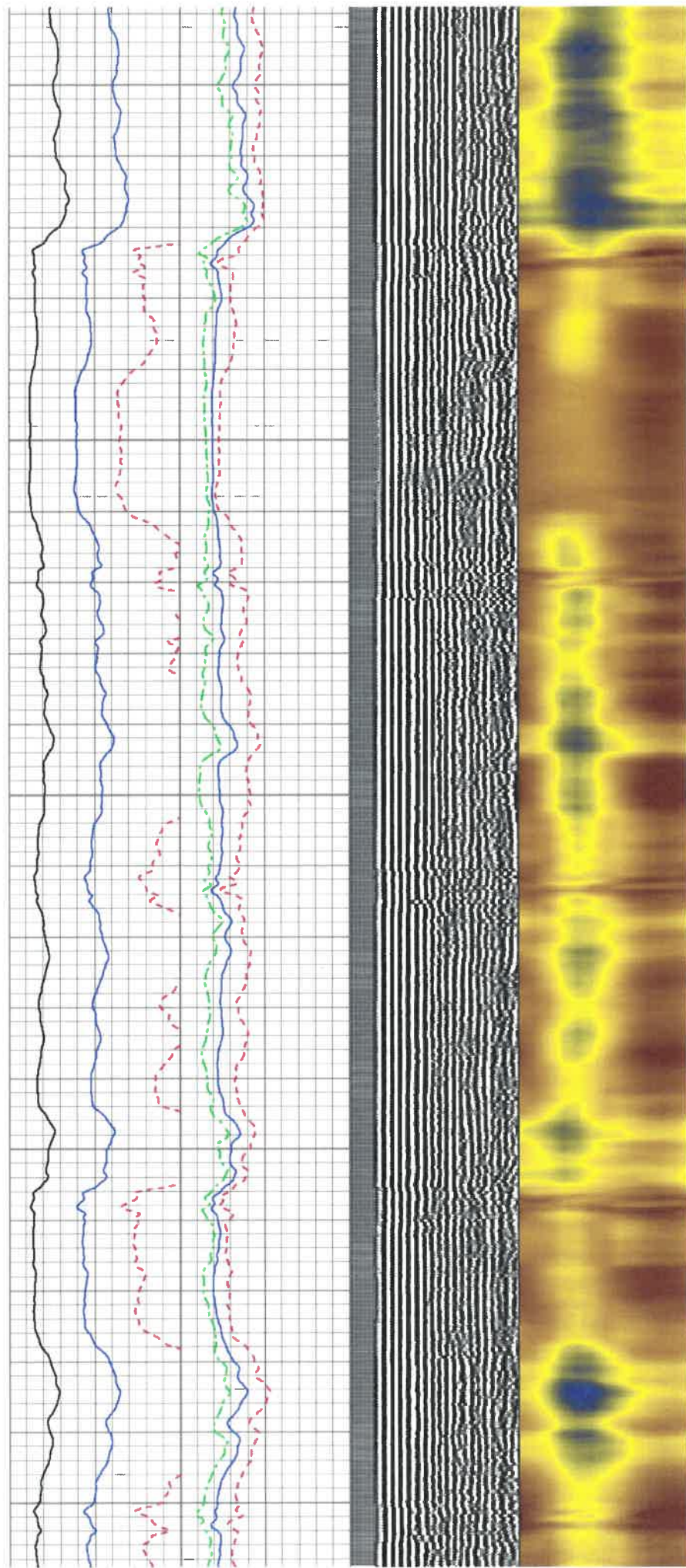


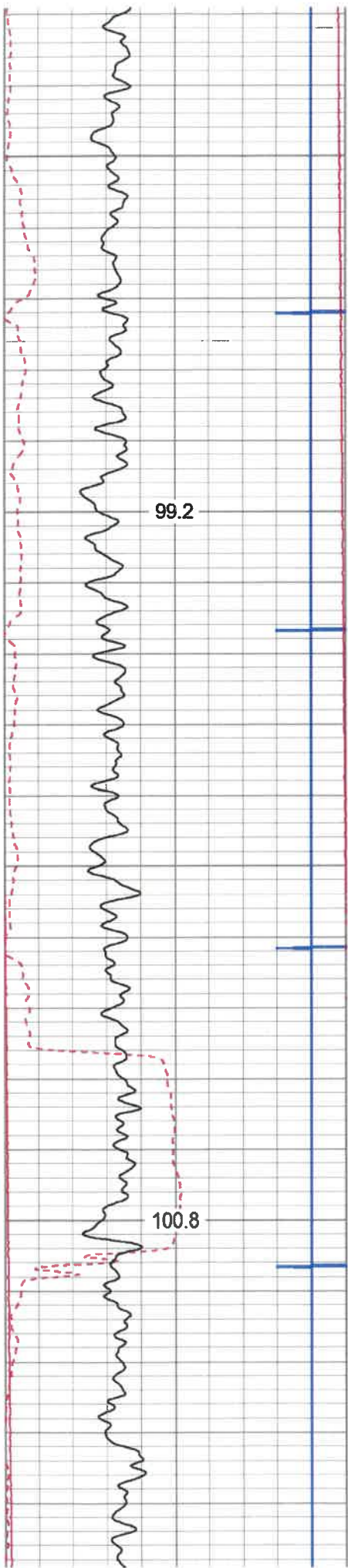


3700

3800

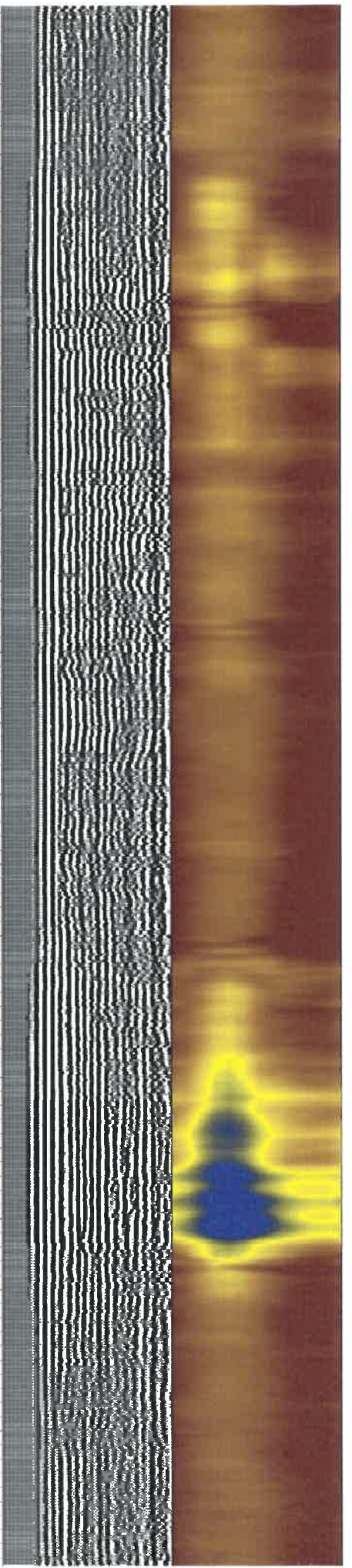
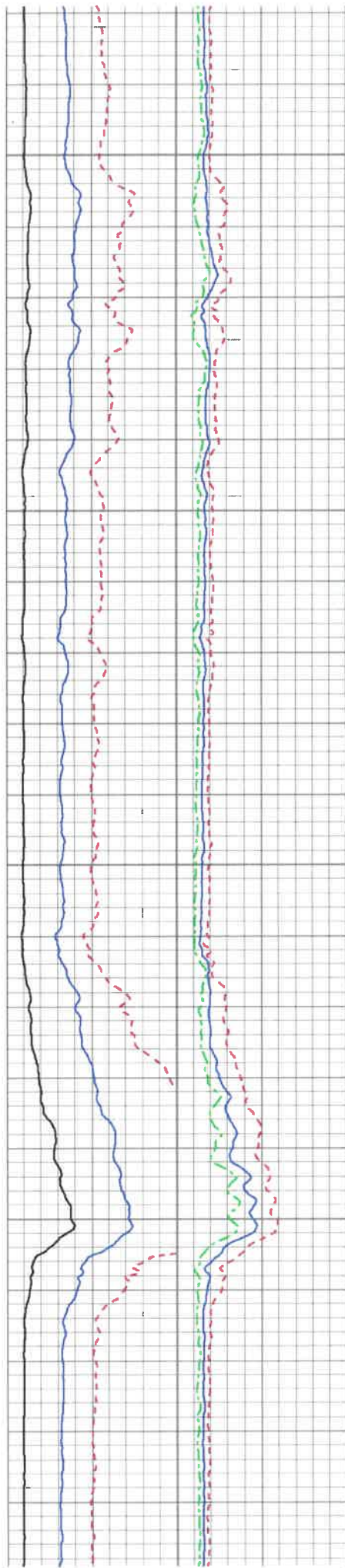
3900

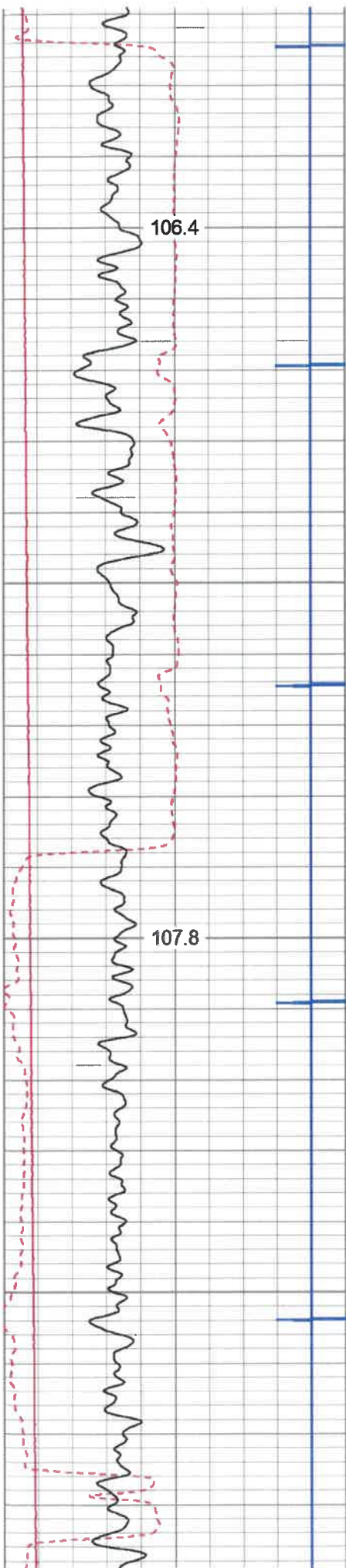




4200

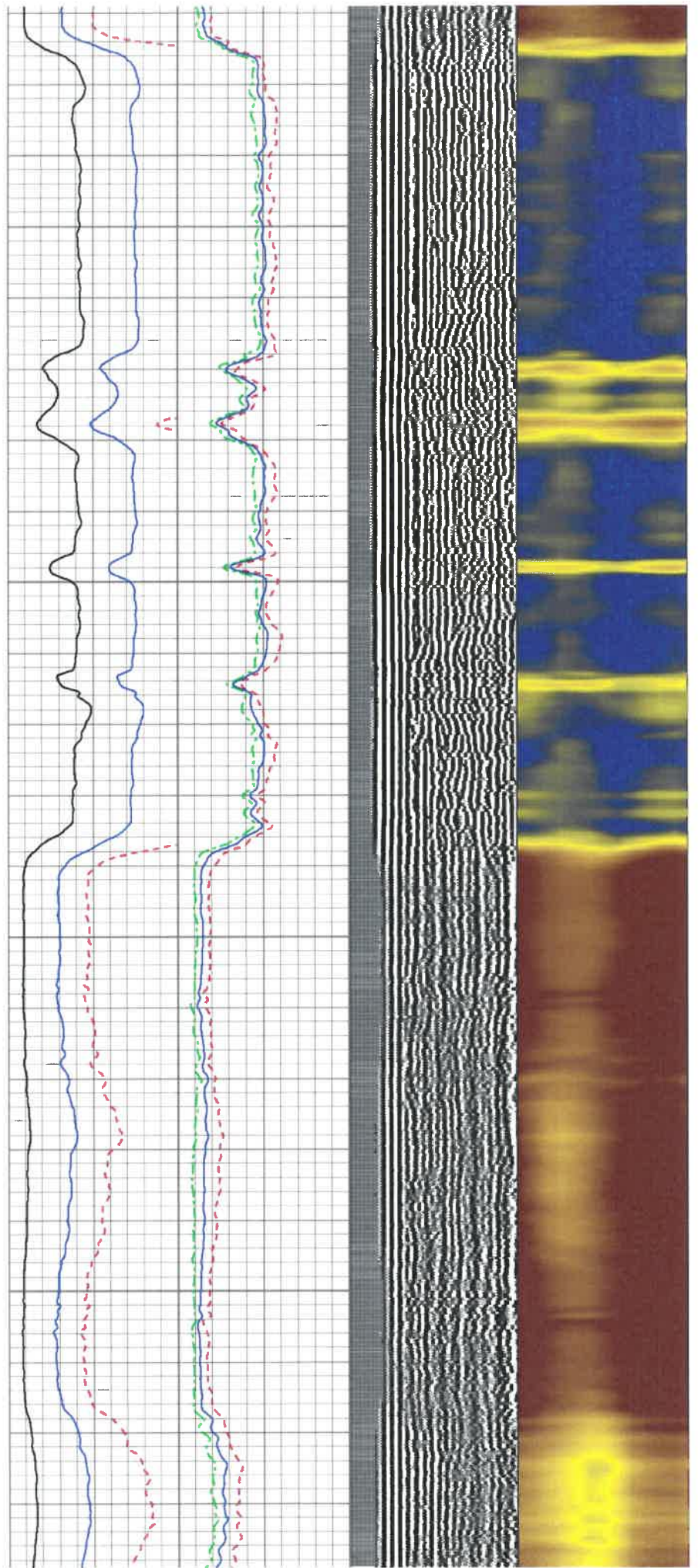
4300

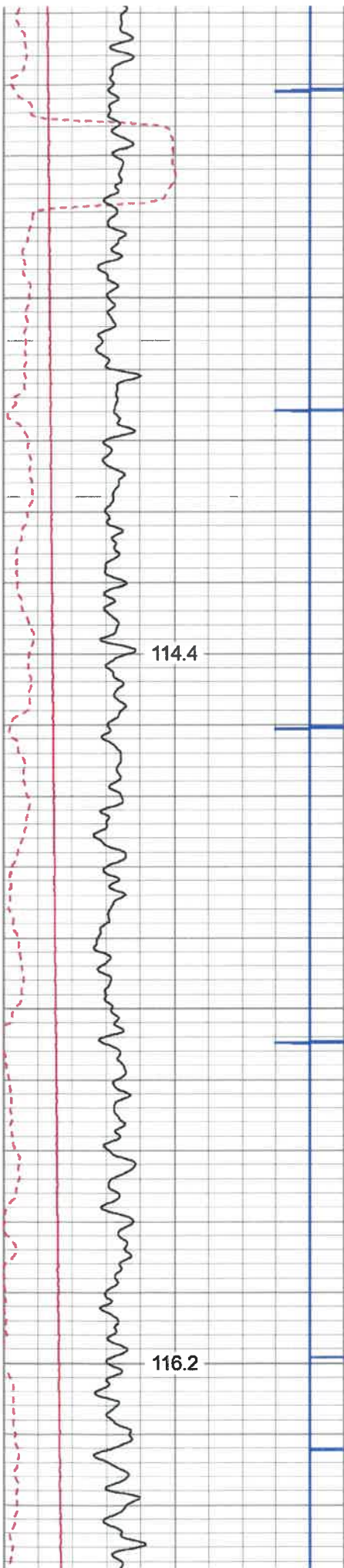




4600

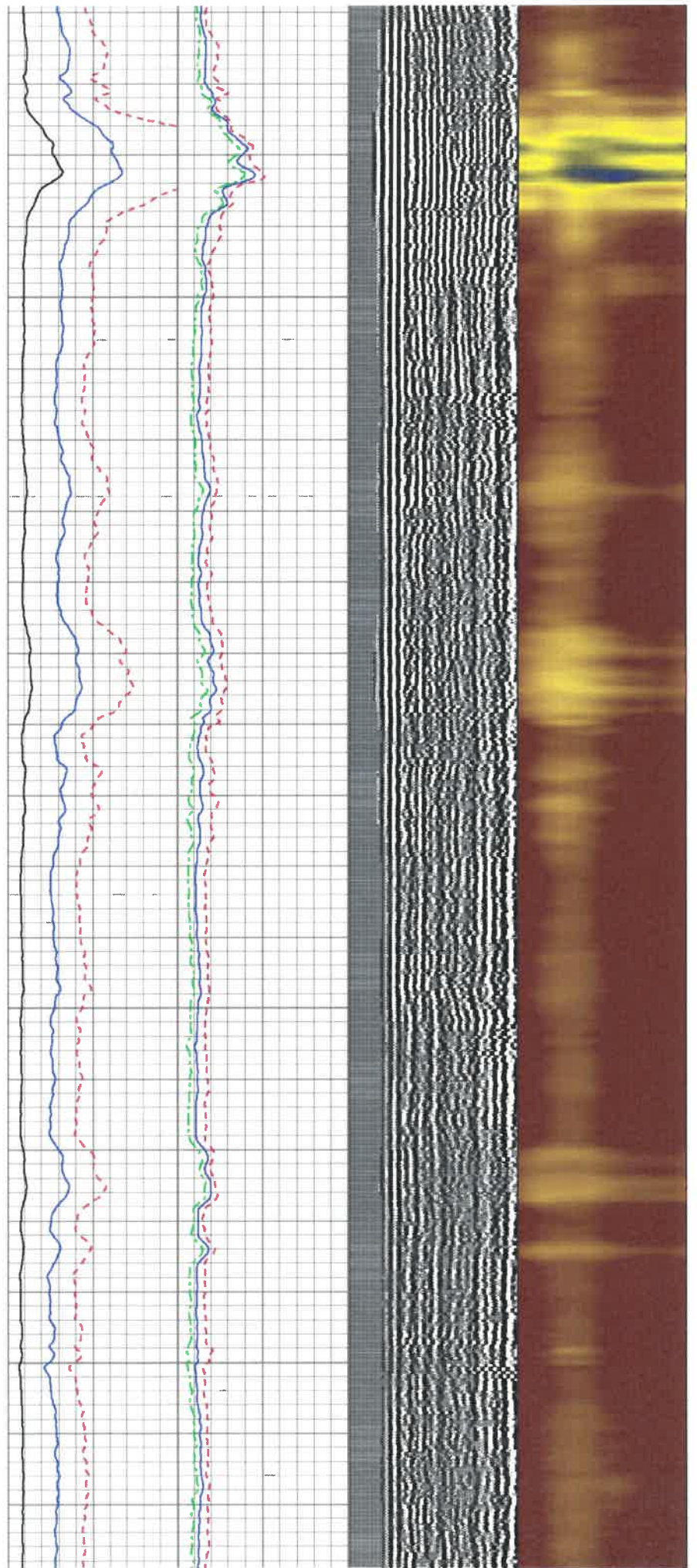
4700

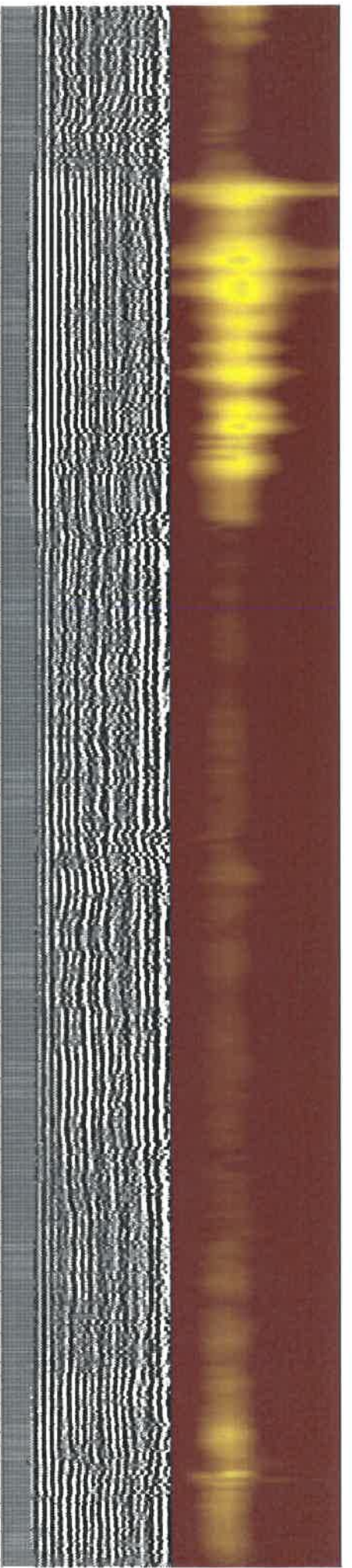
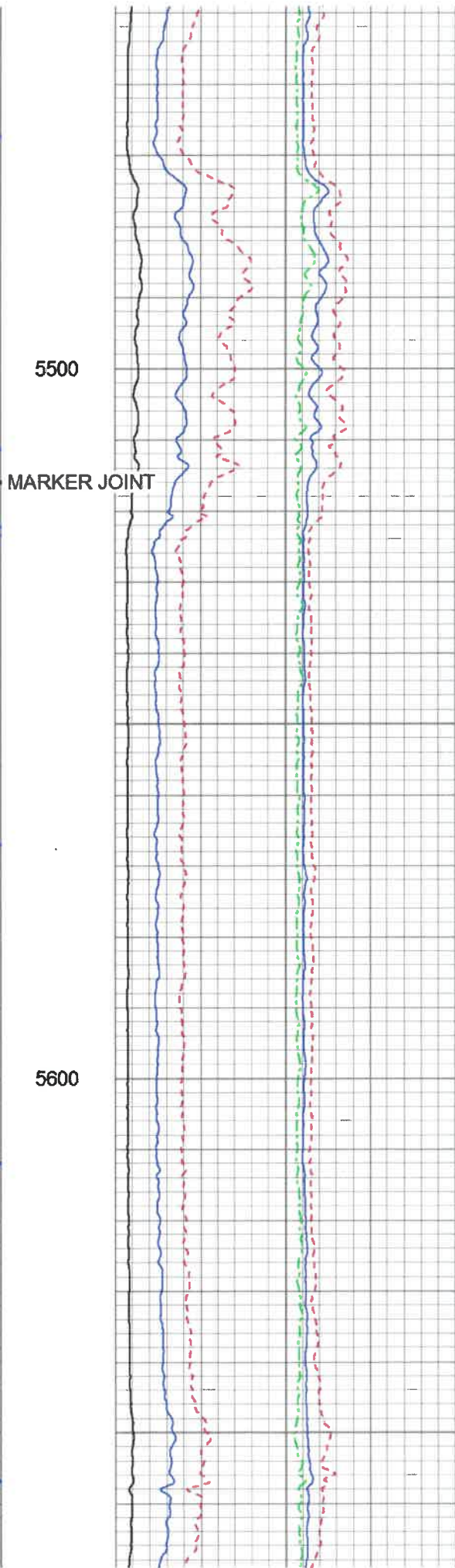
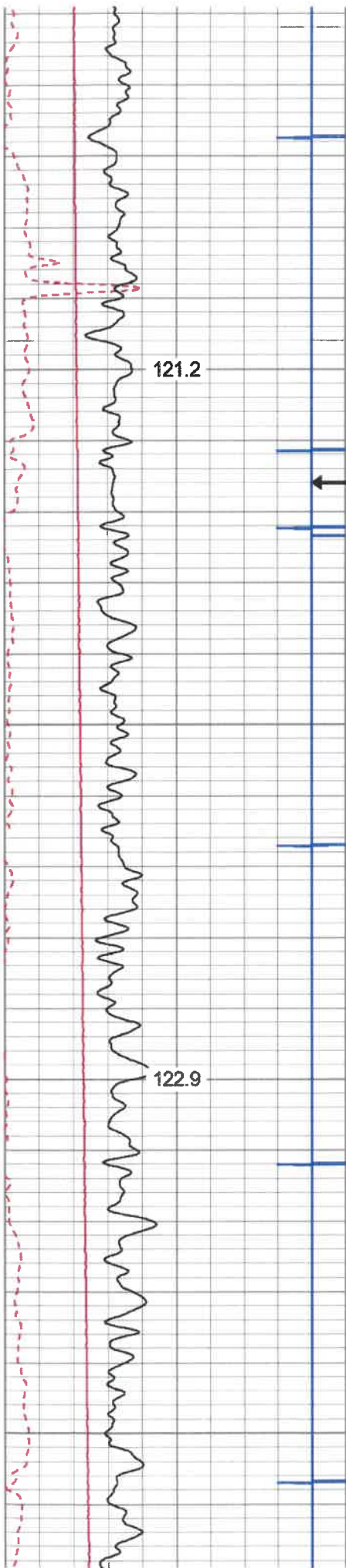


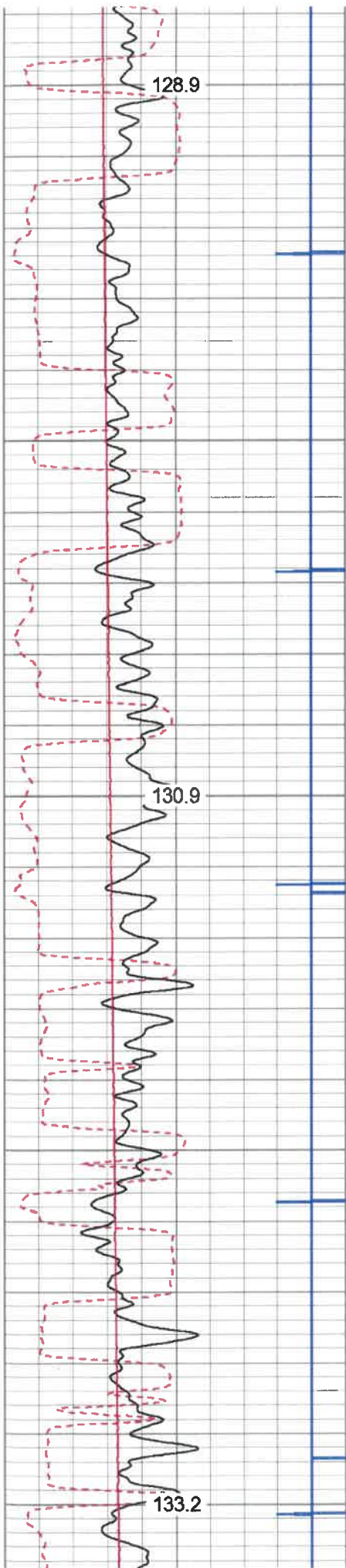


5100

5200



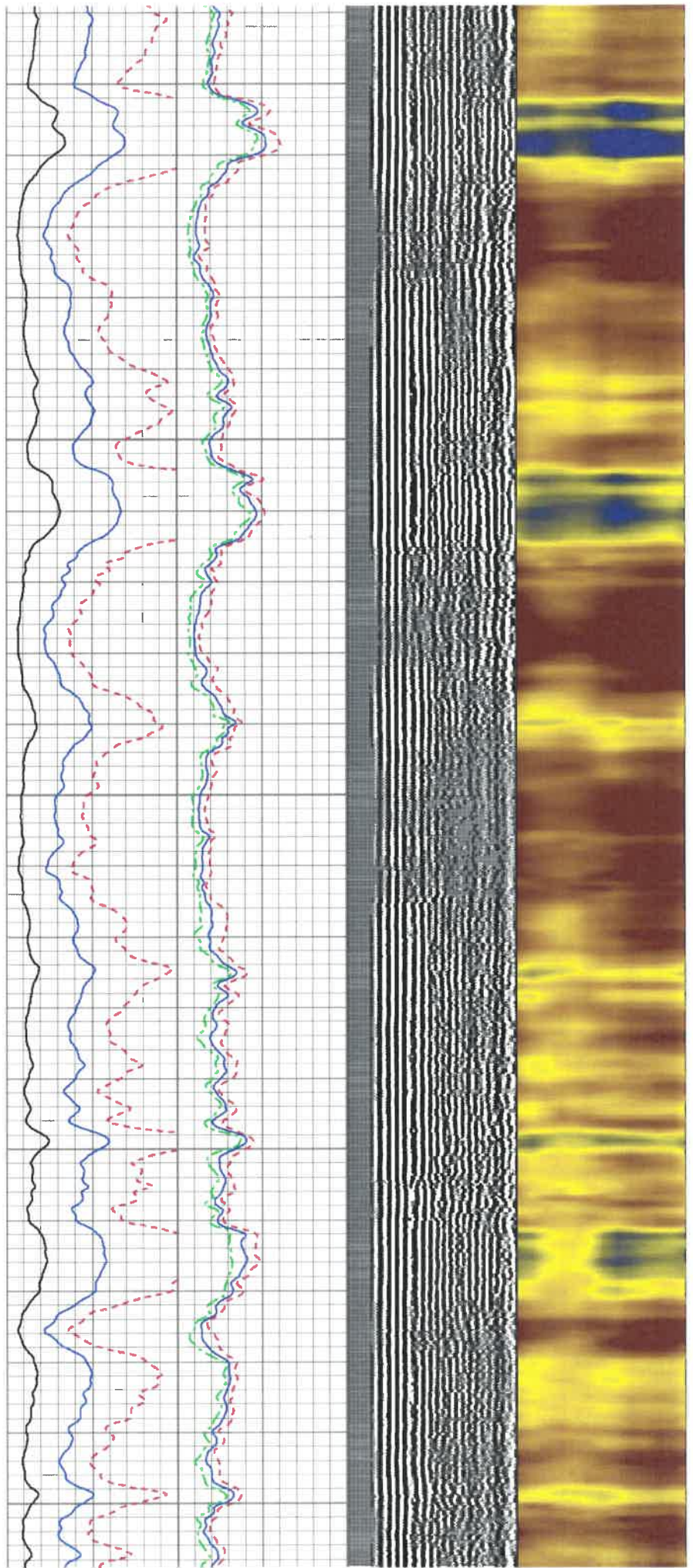


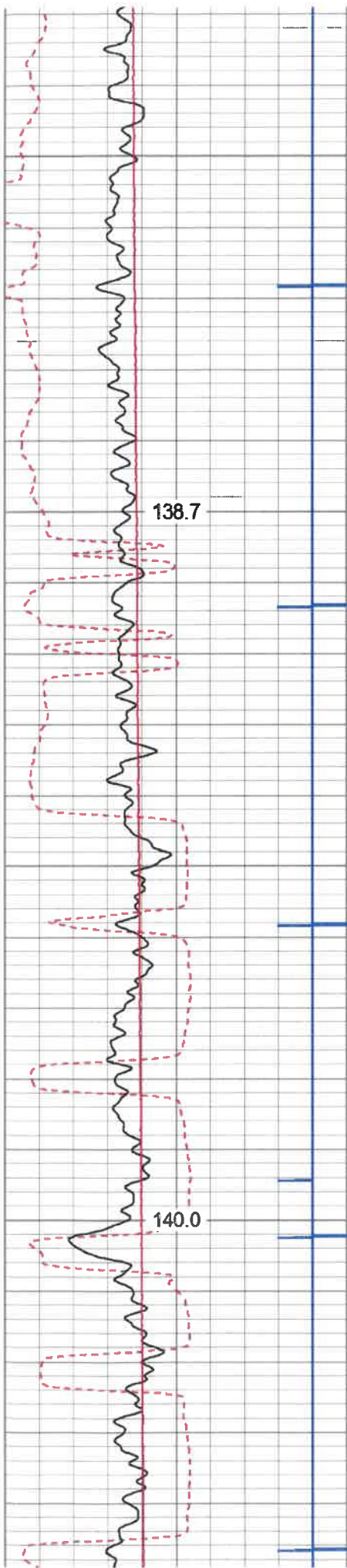


5900

6000

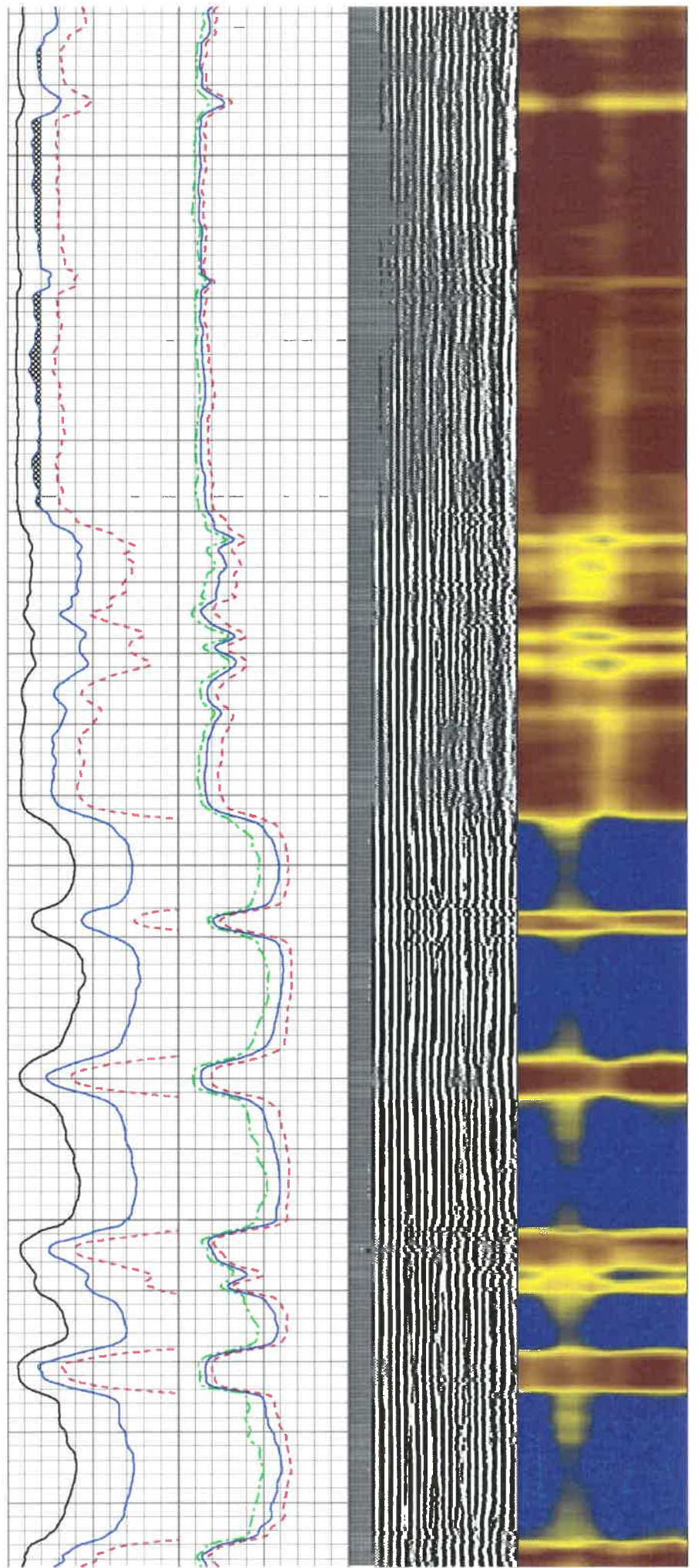
6100

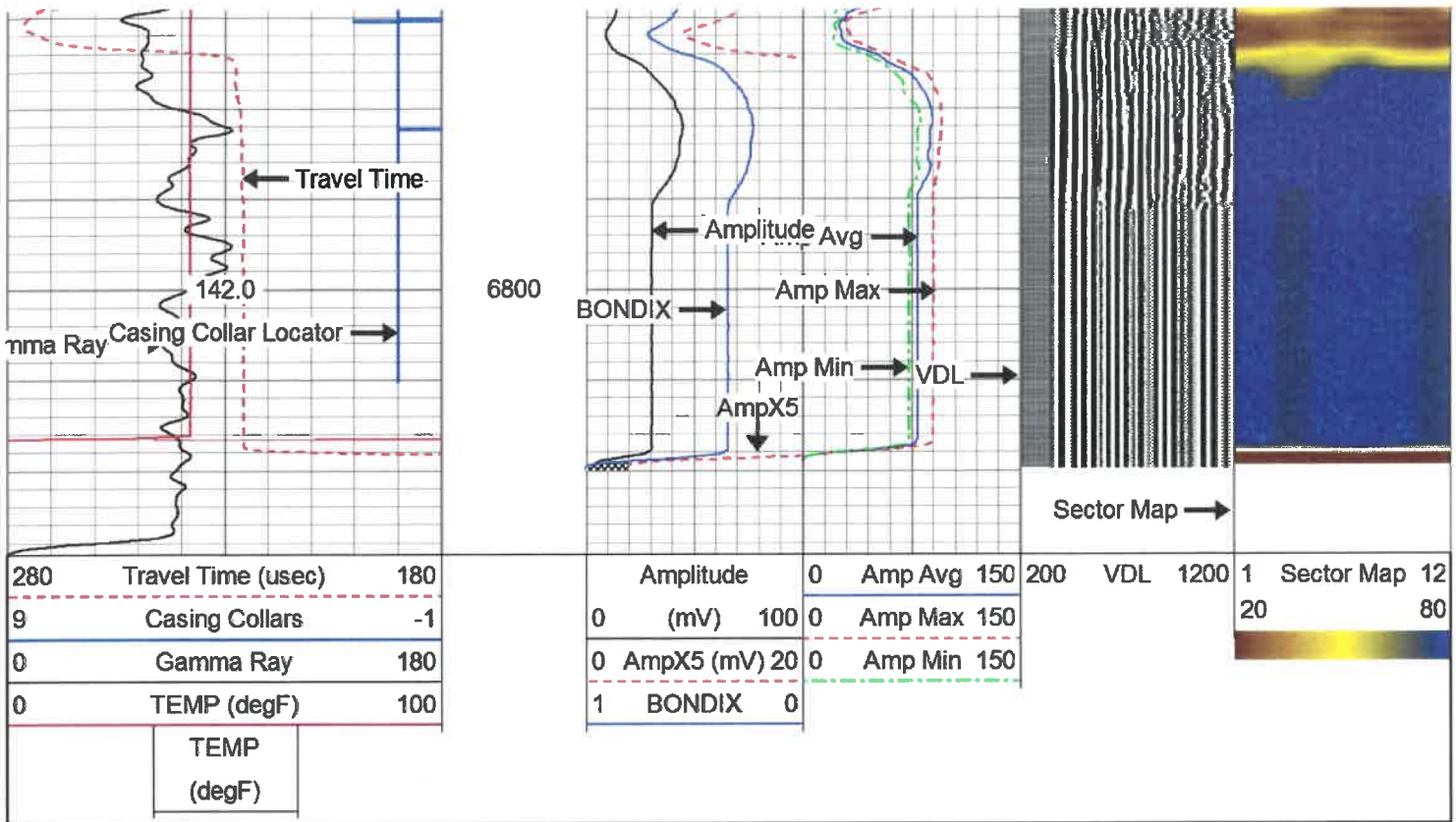




6400

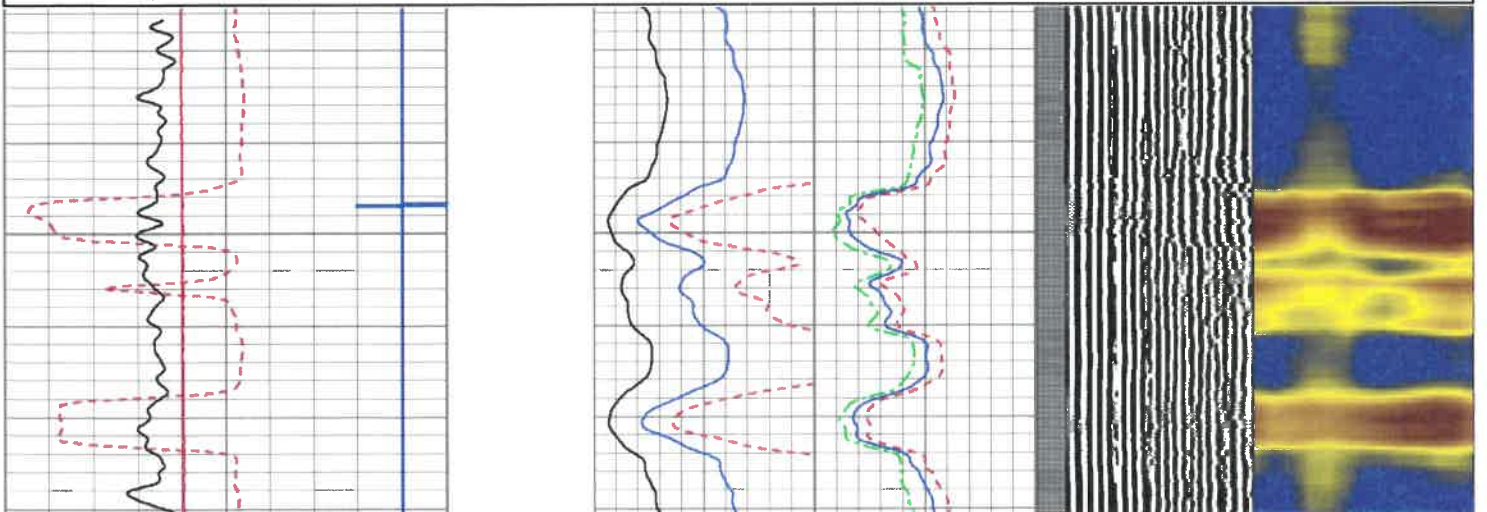
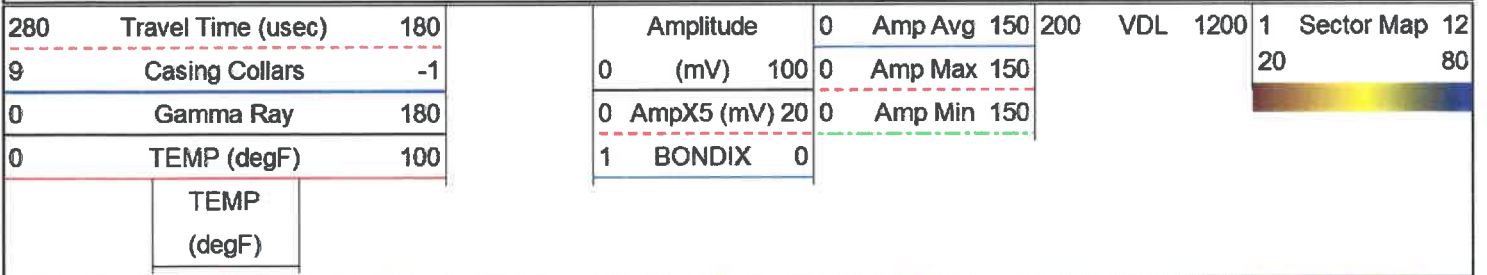
6500

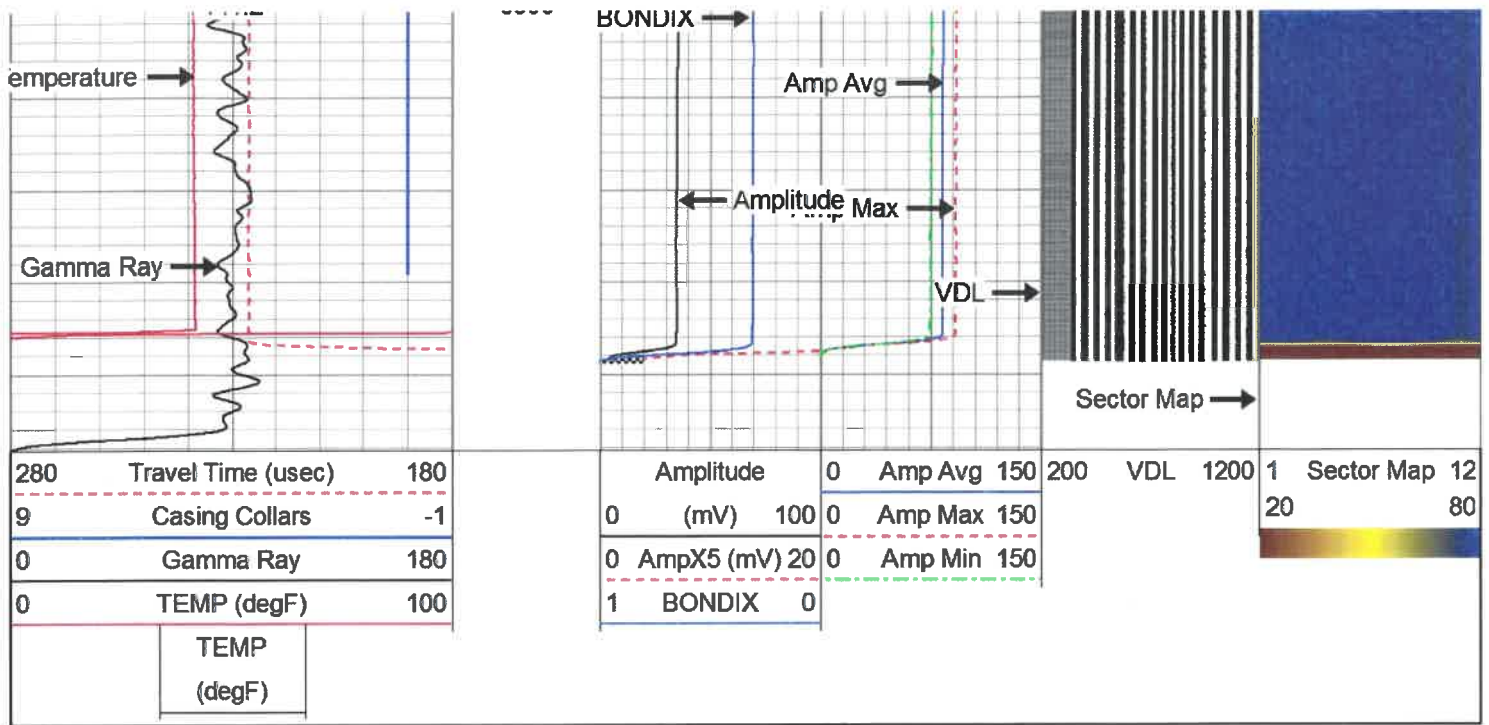




REPEAT SECTION

Database File: e:\kilska 1h.db
 Dataset Pathname: pass3
 Presentation Format: antero
 Dataset Creation: Thu Oct 10 07:15:50 2019 by Log 7.0 B1
 Charted by: Depth in Feet scaled 1:240





Sensor	Offset (ft)	Schematic	Description	Len (ft)	OD (in)	Wt (lb)
CCL	18.93		CCL-312tekco (3.12TEKCO) Tekco 3 1/8" 450 Deg. "F" SmCo Logging CCL	1.82	3.12	25.00
			2.75 2 3/4" Tekco Adjustable Centralizer	2.73	2.75	25.00
TEMP	12.77					
WVFS1	11.48		SCBL-Tek12 (IOL40-05) Tekco 400 Deg F 12 Sector RIB with Temp	9.13	3.25	135.00
WVFS2	11.48					
WVFS3	11.48					
WVFS4	11.48					
WVFS5	11.48					
WVFS6	11.48					
WVFS7	11.48					
WVFS8	11.48					
WVFS9	11.48					
WVFS10	11.48					
WVFS11	11.48					
WVFS12	11.48					
WVF3FT	10.73					



Energy Services

County
State

TYLER
W.V.

Country USA