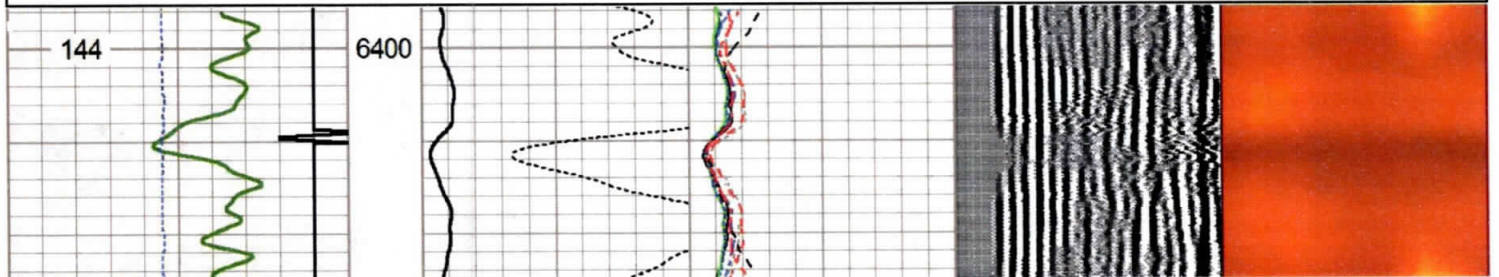
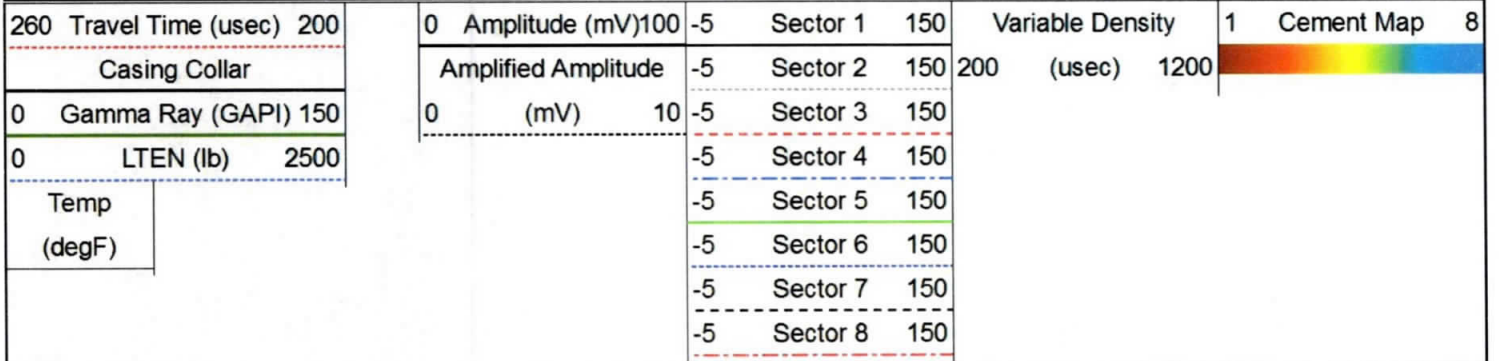
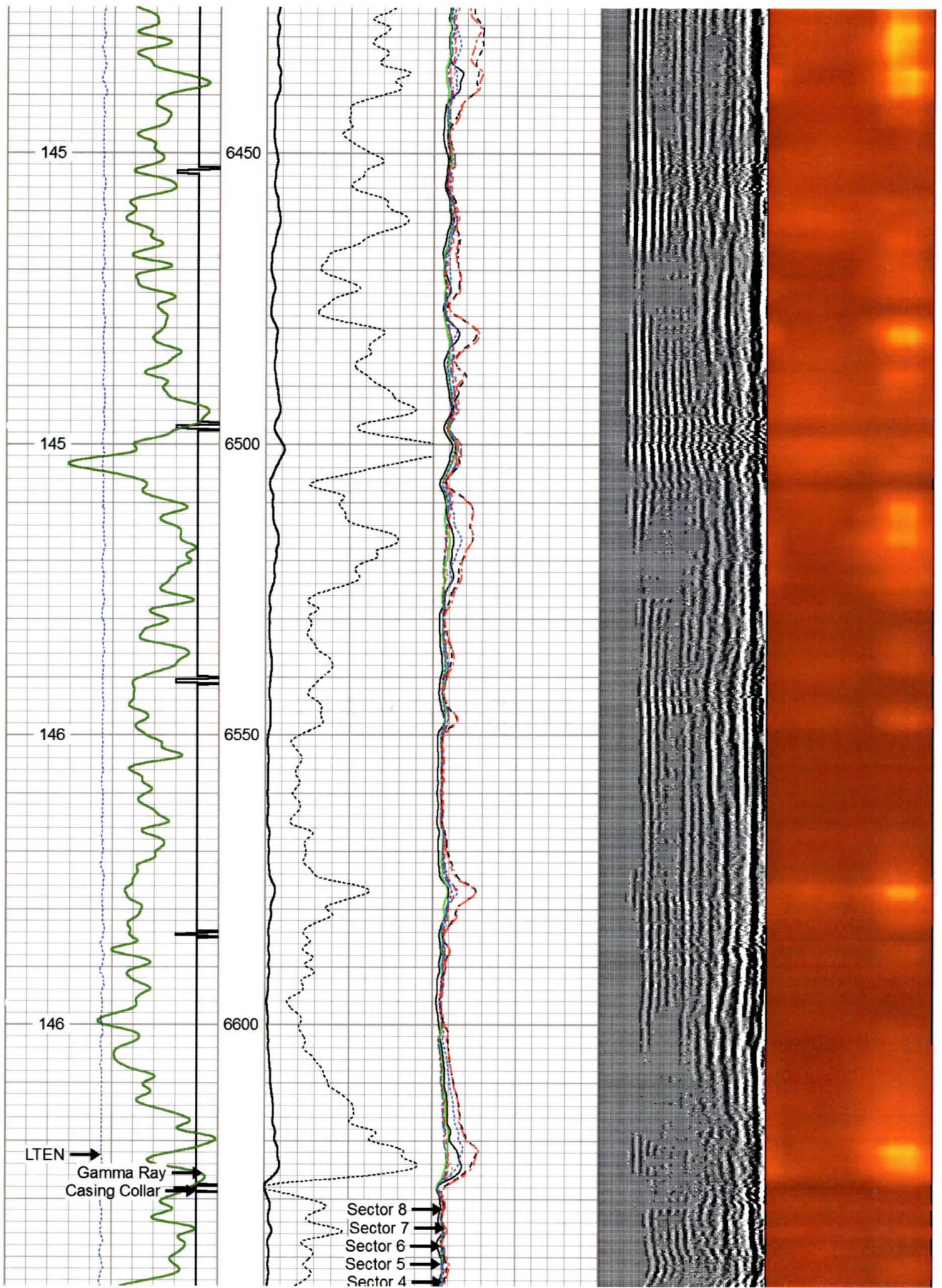
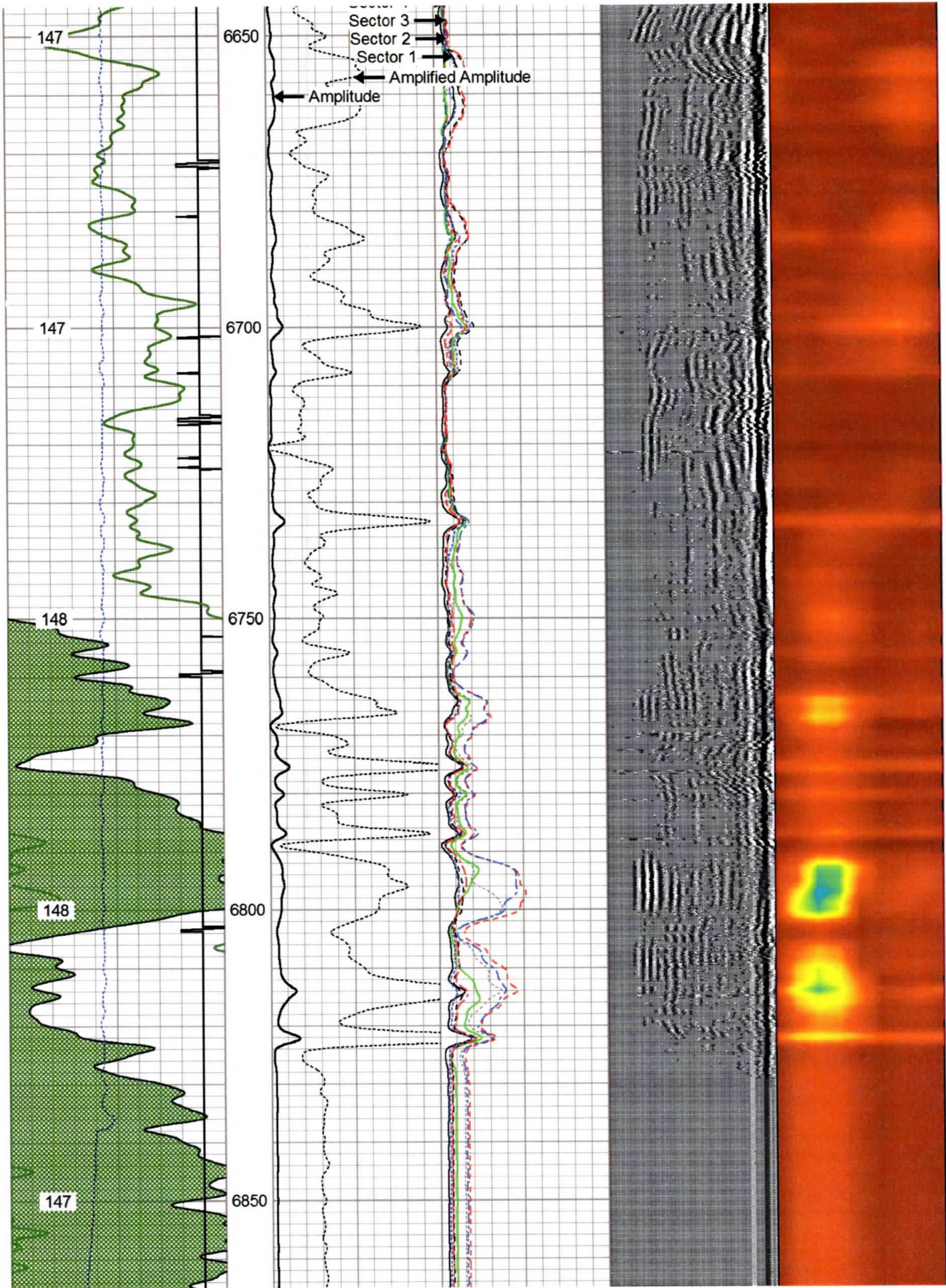


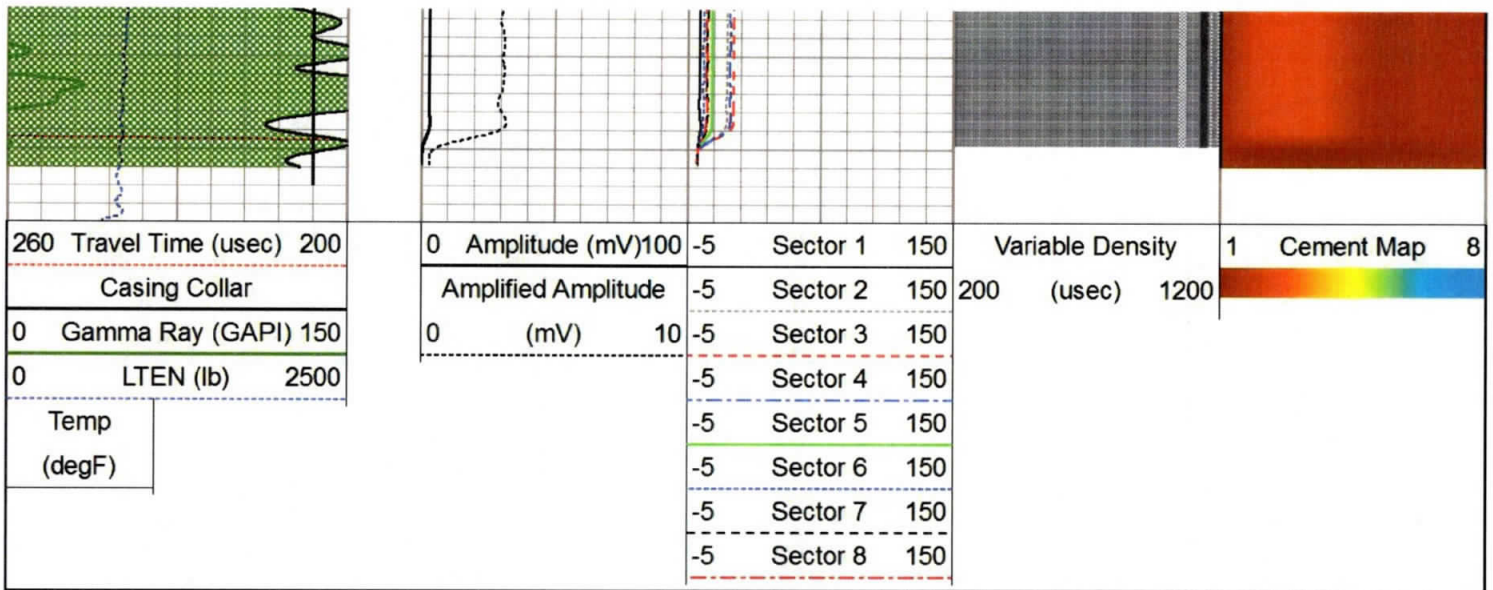
Repeat Pass 0 PSI

Database File antero_keller_1h_rcbl_nineenergy_23_feb_2020.db
 Dataset Pathname Rabbit_Ears/Keller_1H/RCBL_1/pass2
 Presentation Format scbl03
 Dataset Creation Sun Feb 23 13:48:57 2020
 Charted by Depth in Feet scaled 1:240









Log Variables

DatabaseC:\ProgramData\Warrior\Data\antero_keller_1h_rcbl_nineenergy_23_feb_2020.db
 Dataset Rabbit_Ears/Keller_1H/RCBL_1/pass4/_vars_

Top - Bottom

BHTEMP_Src	BOREID in	BOTTEMP degF	CASEOD in	CASETHCK in	CASEWGHT lb/ft	MAXAMPL mV	MINAMPL mV
TEMP	7.875	147	5.5	0.361	20	72	1
MINATTN db/ft	PERFS	PPT usec	SRFTEMP degF	TDEPTH ft			
1	No	0	0	0			

Variable Description

BHTEMP_Src : BHTEMP Input Source Selector	MINAMPL : Minimum Amplitude
BOREID : Borehole I.D.	MINATTN : Minimum Attenuation
BOTTEMP : Bottom Hole Temperature	PERFS : Perforation Flag
CASEOD : Casing O.D.	PPT : Predicted Pipe Time
CASETHCK : Casing Thickness	SRFTEMP : Surface Temperature
CASEWGHT : Casing Weight	TDEPTH : Total Depth
MAXAMPL : Maximum Amplitude	

Calibration Report

Database File antero_keller_1h_rcbl_nineenergy_23_feb_2020.db
 Dataset Pathname Rabbit_Ears/Keller_1H/RCBL_1/pass4
 Dataset Creation Sun Feb 23 13:56:00 2020

Gamma Ray Calibration Report

Serial Number:	FW1211-86	
Tool Model:	Probe	
Performed:	Mon Feb 03 15:18:32 2014	
Calibrator Value:	1.0	GAPI
Background Reading:	0.0	cps
Calibrator Reading:	1.0	cps
Sensitivity:	0.8000	GAPI/cps

Segmented Cement Bond Log Calibration Report

Serial Number:	FW1312-32
----------------	-----------

Tool Model:

Probe2/51

Calibration Casing Diameter: 5.500 in
 Calibration Depth: -11.158 ft

Master Calibration, performed Sun Feb 23 11:25:29 2020:

	Raw (v)		Calibrated (mv)		Results	
	Zero	Cal	Zero	Cal	Gain	Offset
3'	0.008	0.974	1.000	71.921	51.469	0.283
CAL	1.012	1.014				
5'	0.011	1.083	1.000	71.921	66.177	0.276
SUM						
S1	0.005	0.973	1.000	71.921	83.291	0.643
S2	0.017	0.968	1.000	71.921	84.604	-0.292
S3	0.009	0.934	1.000	71.921	86.655	0.315
S4	0.012	0.954	1.000	71.921	85.284	0.122
S5	0.010	1.014	1.000	71.921	80.666	0.275
S6	0.009	1.002	1.000	71.921	81.398	0.352
S7	0.008	0.993	1.000	71.921	82.025	0.391
S8	0.009	0.972	1.000	71.921	83.653	0.364


Internal Reference Calibration, performed (Not Performed):

	Raw (v)		Calibrated (v)		Results	
	Zero	Cal	Zero	Cal	Gain	Offset
CAL	0.000	0.000	1.012	1.014	1.000	0.000

Air Zero Calibration, performed Sun Feb 23 06:50:29 2020:

	Raw (v)		Calibrated (v)		Results	
	Zero		Zero		Gain	Offset
3'	0.000		0.000			0.000
5'	0.000		0.000			0.000
SUM						
S1	0.000		0.000			0.000
S2	0.000		0.000			0.000
S3	0.000		0.000			0.000
S4	0.000		0.000			0.000
S5	0.000		0.000			0.000
S6	0.000		0.000			0.000
S7	0.000		0.000			0.000
S8	0.000		0.000			0.000

RECEIVED
 Office of Oil and Gas
 OCT 28 2020
 WV Department of
 Environmental Protection

Sensor	Offset (ft)	Schematic	Description	Length (ft)	O.D. (in)	Weight (lb)
HeadVolt	14.11		CHD-Titan Titan 1 7/16" GO Cablehead	1.00	1.44	5.00

Temp	11.27		CENT-Overbody Antelope (SP-919-0233)	1.67	4.88	5.00
WVFS8	9.03		RBT-Probe275T (FW1312-32) Probe 2.75" Radial with Integral Temperature Sub	9.39	2.75	90.00
WVFS7	9.03					
WVFS6	9.03					
WVFS5	9.03					
WVFS4	9.03					
WVFS3	9.03					
WVFS2	9.03					
WVFS1	9.03					
WVF3FT	9.03					
WVF5FT	8.03					
WVFCAL	4.78					
HEADVOLT	4.78					
CCL	3.88		CENT-Overbody Antelope (SP-919-0233)	1.67	4.88	5.00
GR	2.54					

Dataset: antero_keller_1h_rcbl_nineenergy_23_feb_2020.db: Rabbit_Ears/Keller_1H/RCBL_1/pass4
 Total length: 15.17 ft
 Total weight: 162.00 lb
 O.D.: 4.88 in



Company: Antero Resources
 Well: Keller Unit 1H
 Field: Rabbit Ears
 County: Tyler
 State: West Virginia