



**Segmented Radial Cement Bond
W/Gamma Ray, CCL
Log**

Company Antero Resources Corporation Well Dierkes Unit 2H Field Marcellus County Tyler State WV Country US	Company Antero Resources Corporation Well Dierkes Unit 2H Field Marcellus County Tyler State WV Country US
Location: API #: 47095025510000	
Permanent Datum Log Measured From Drilling Measured From	Ground Level R.K.B. 25' Elevation R.K.B. D.F. G.L.
SEC TWP RGE	Elevation

Date	12-NOV-2019	
Run Number	ONE	
Depth Driller	14579'	
Depth Logger	6745'	
Bottom Logged Interval	6745'	
Top Log Interval	Surface	
Open Hole Size	8.25"	
Type Fluid	FW	
Density / Viscosity	8.6	
Max. Recorded Temp.	133 degF	
Estimated Cement Top	2500'	
Time Well Ready	N/A	
Time Logger on Bottom	N/A	
Equipment Number	214182	
Location	Bridgeport, WV	
Recorded By	S. Butler	
Witnessed By	Jerrako Evans	

Borehole Record		Tubing Record				
Run Number	Bit From	To	Size	Weight	From	To
ONE	24"	Surface	80'			
TWO	17.5"	80'	453'			
THREE	12.25"	453'	2685'			
FOUR	8.25"	2685'	14579'			

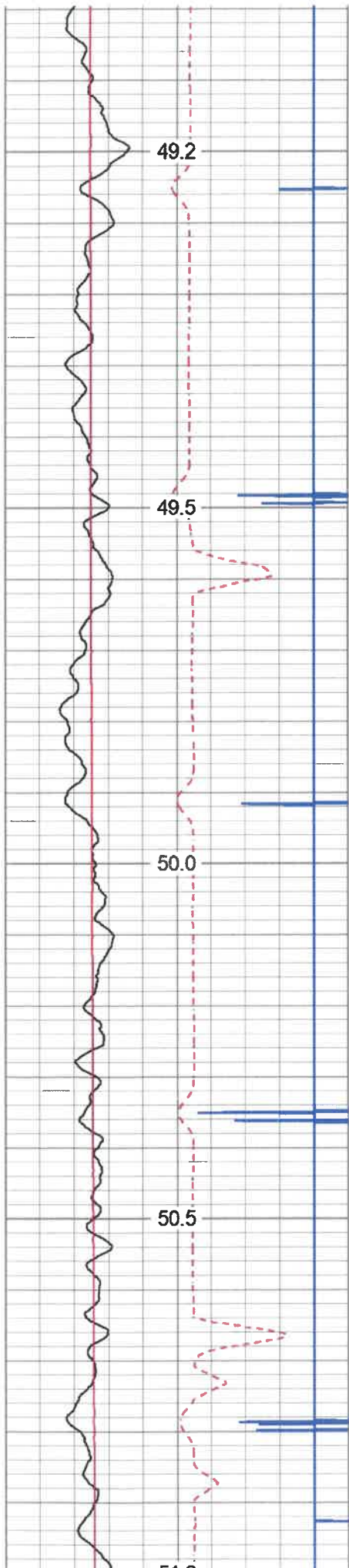
Casing Record	Size	Wgt/Ft	Top	Bottom
Surface String	13.375"	54.5	Surface	453'
Prot. String	9.625"	40	Surface	2685'
Production String	5.5"	20	Surface	14579'
Liner				

<<< Fold Here >>>

All interpretations are opinions based on inferences from electrical or other measurements and we cannot and do not guarantee the accuracy or correctness of any interpretation, and we shall not, except in the case of gross or willful negligence on our part, be liable or responsible for any loss, costs, damages, or expenses incurred or sustained by anyone resulting from any interpretation made by any of our officers, agents or employees. These interpretations are also subject to our general terms and conditions set out in our current Price Schedule.

Comments

Zero @ R.K.B. 25'
 Marker Joint 5464' - 5474'
 Log TD 6745'
 Cement Top @
 Log Ran Under 1500 PSI



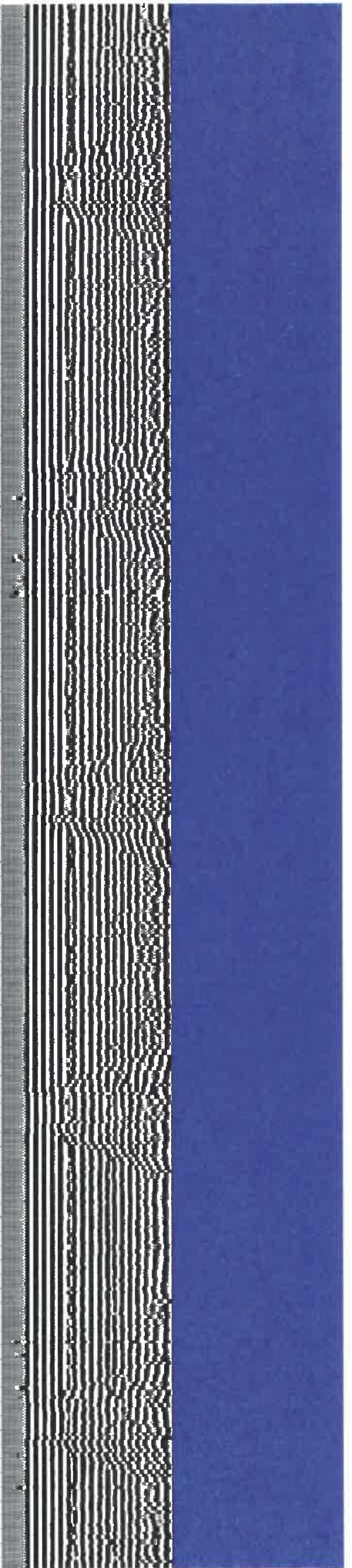
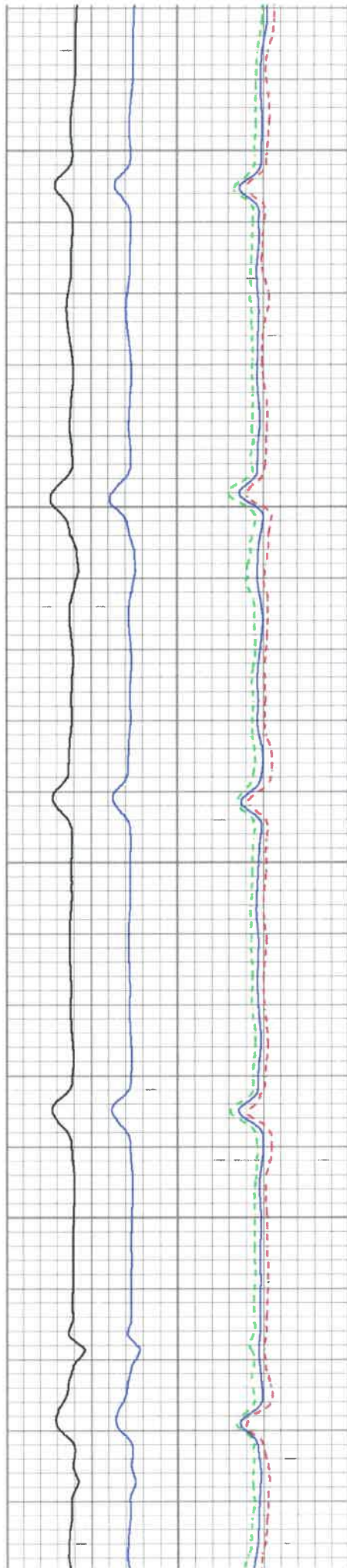
200

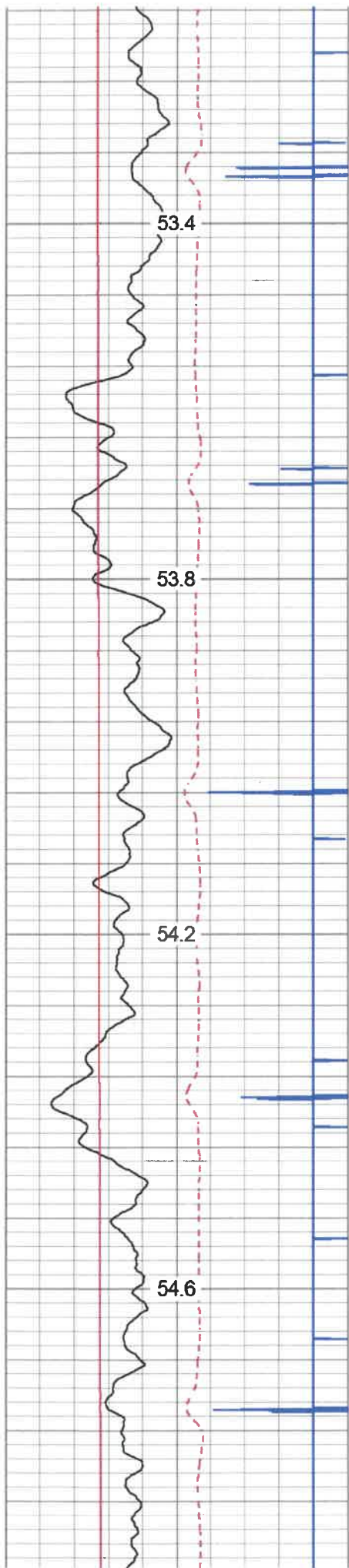
250

300

350

400



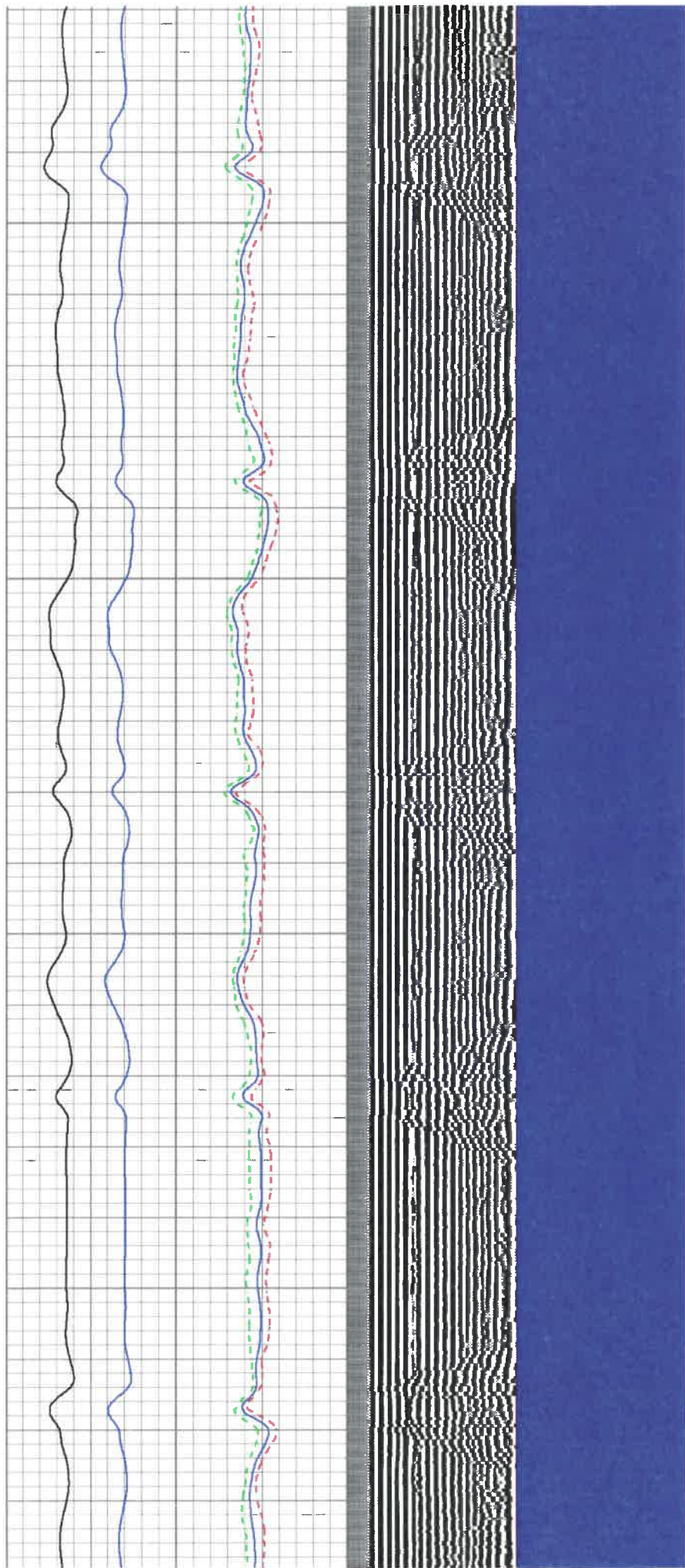


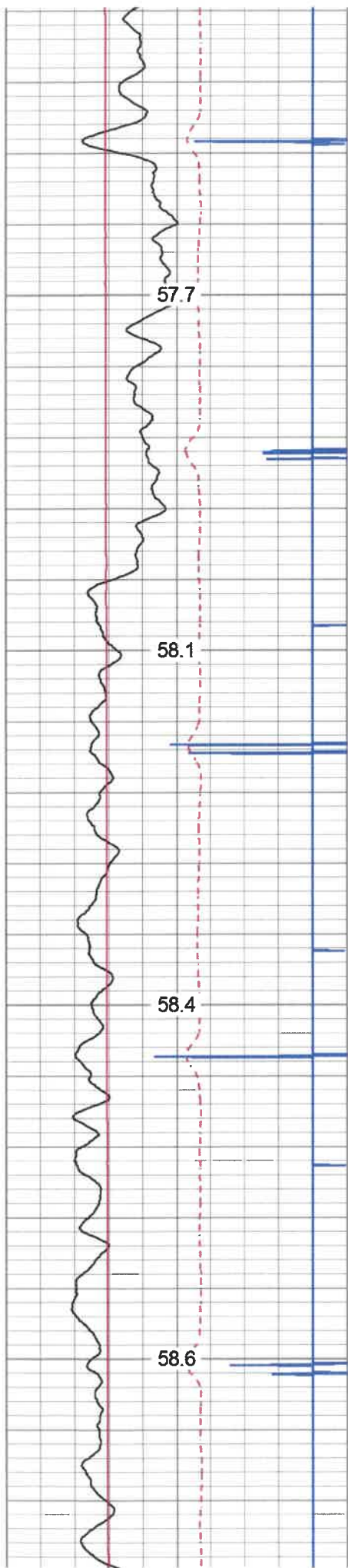
650

700

750

800



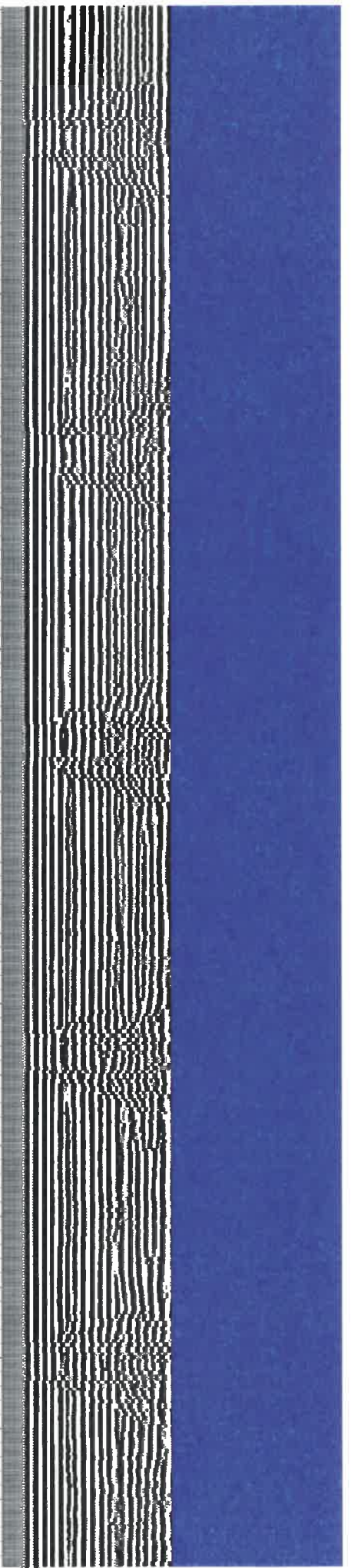
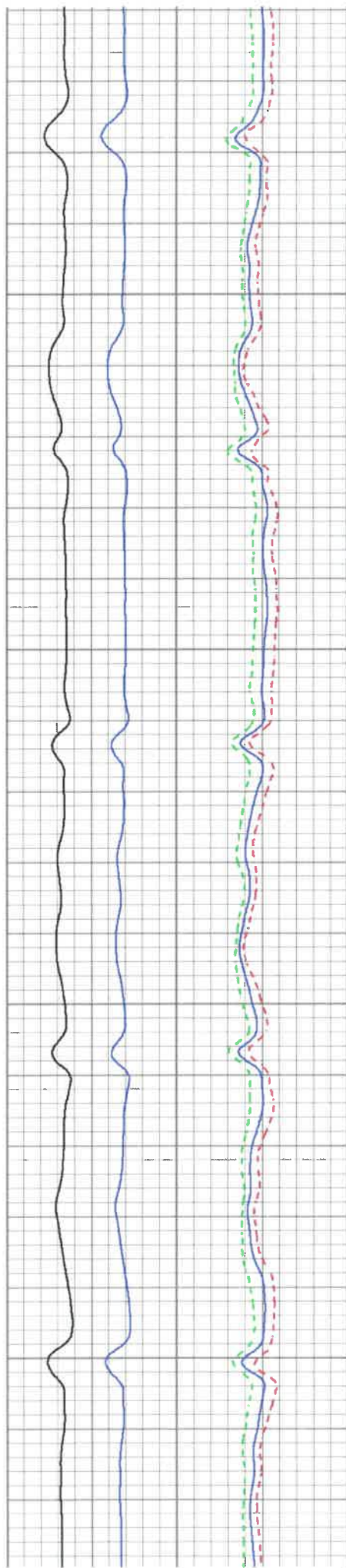


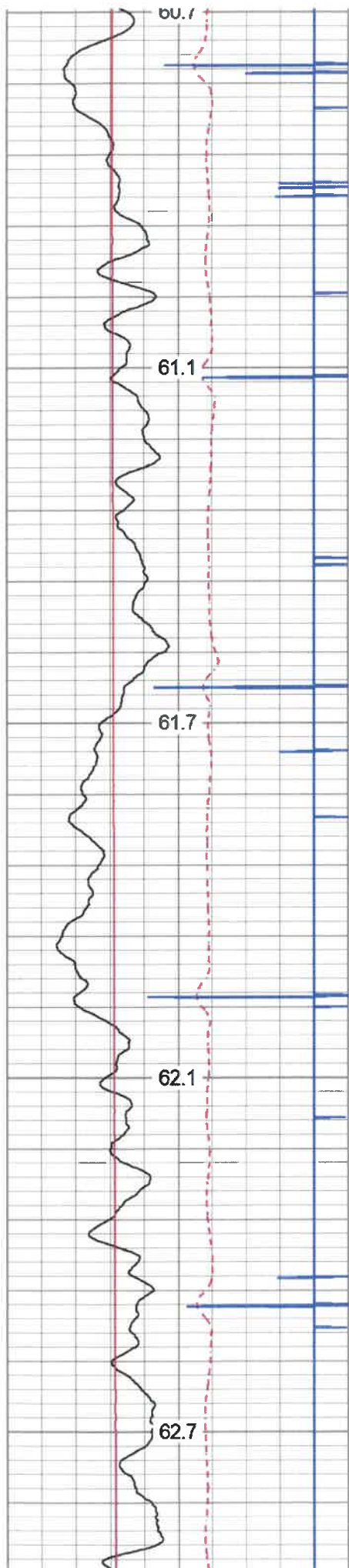
1100

1150

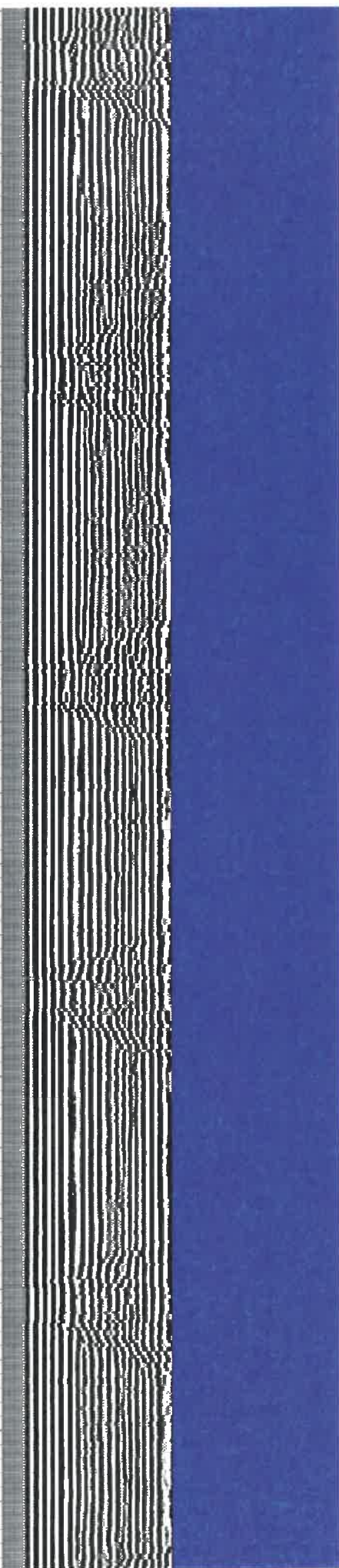
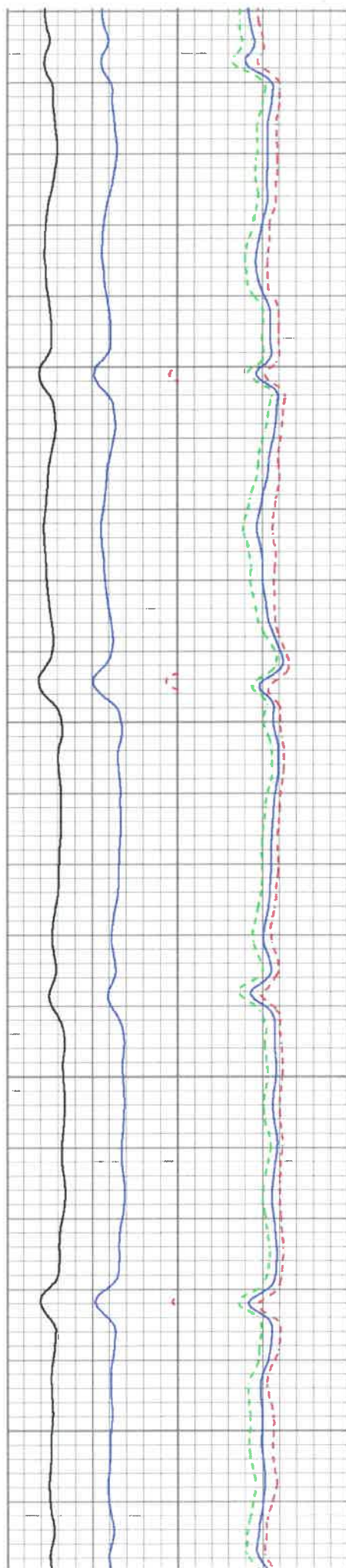
1200

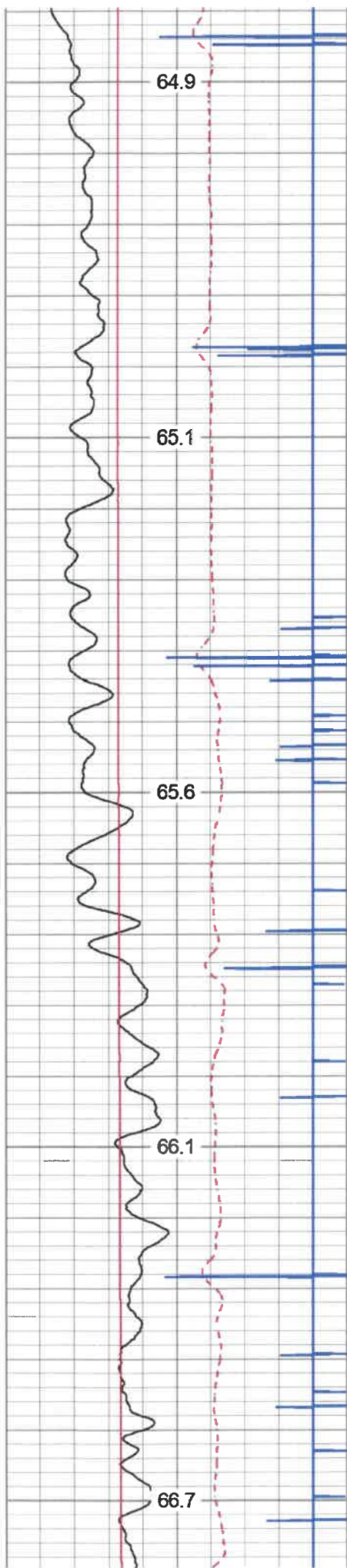
1250





1500
1550
1600
1650
1700





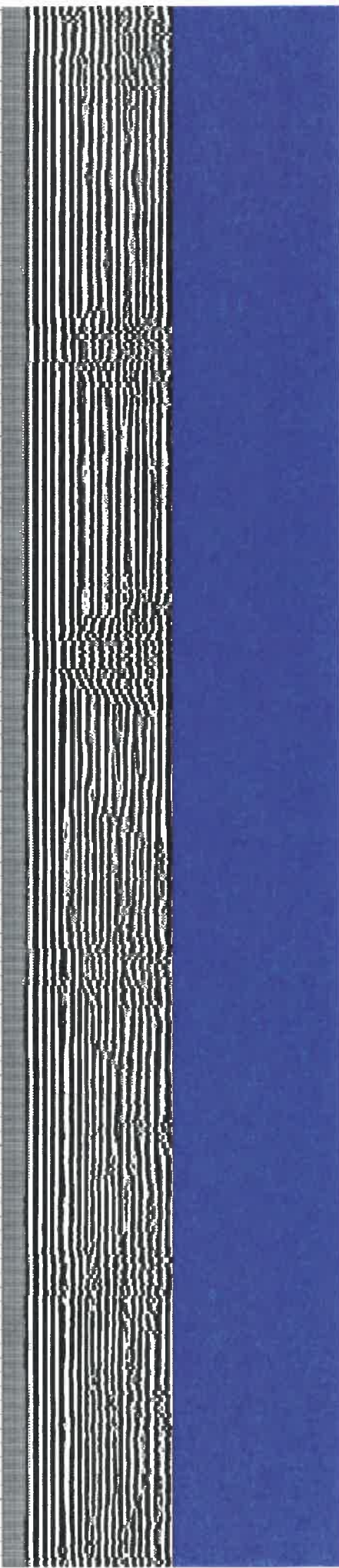
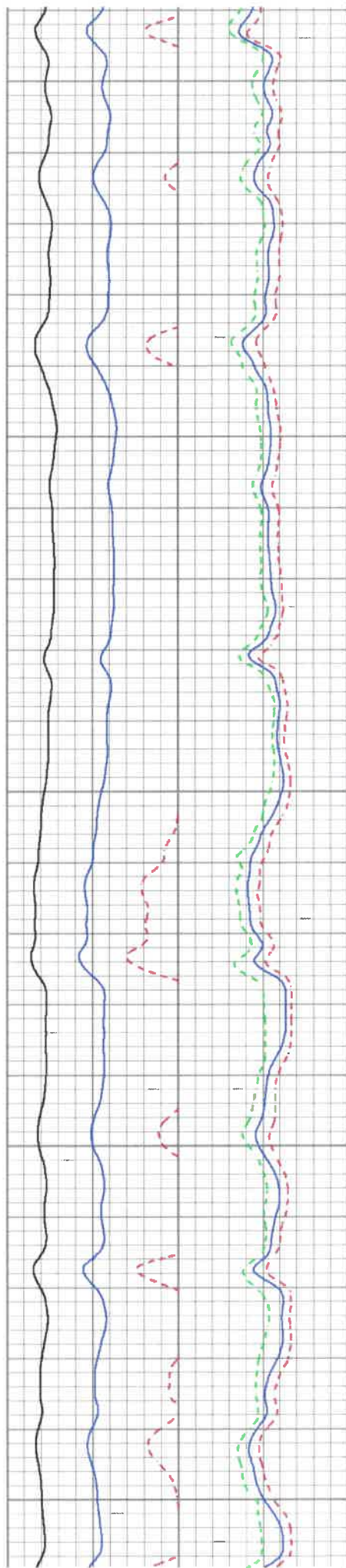
1950

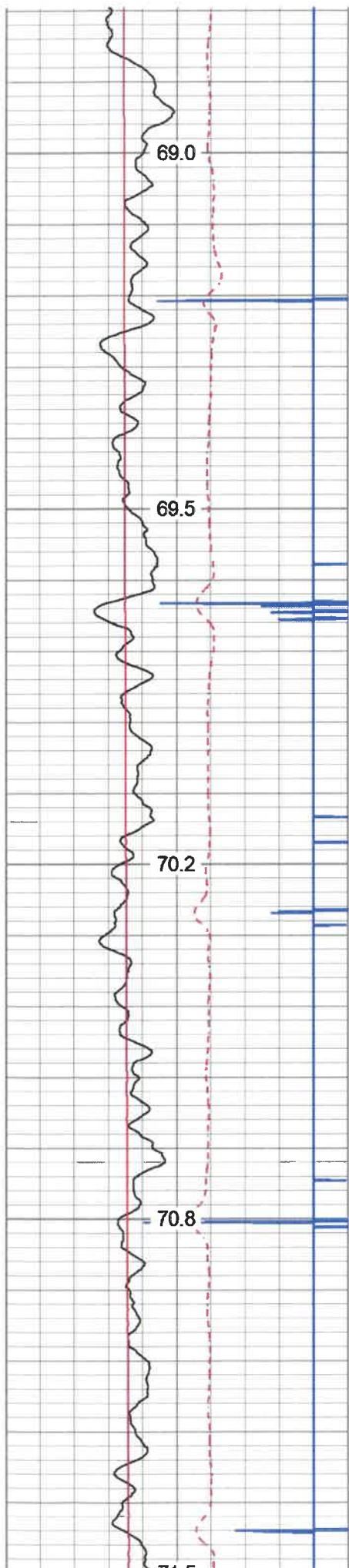
2000

2050

2100

2150





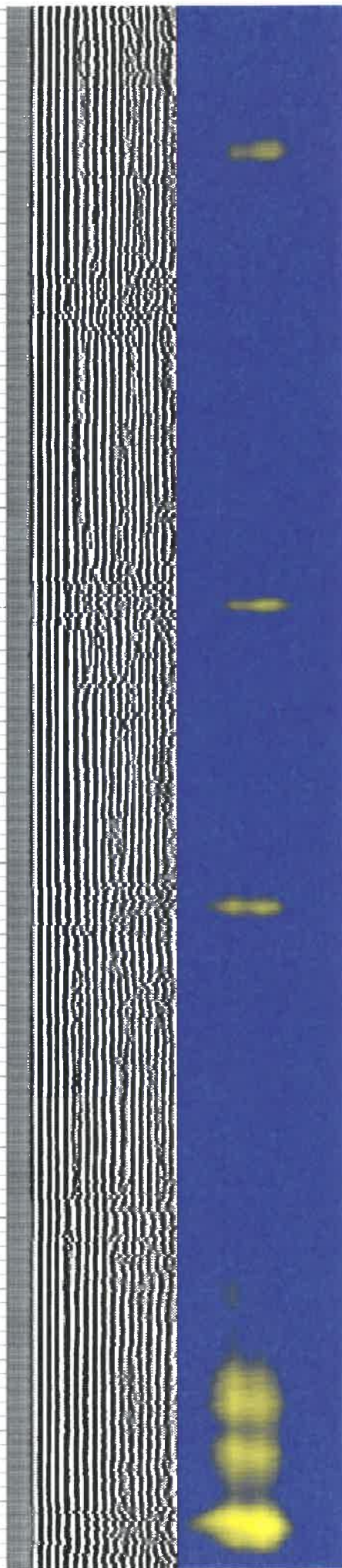
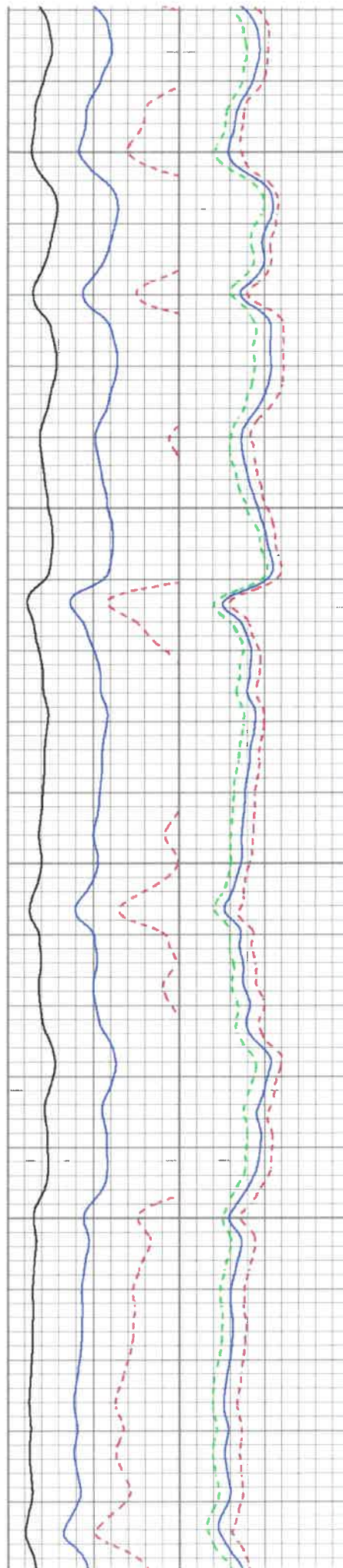
2400

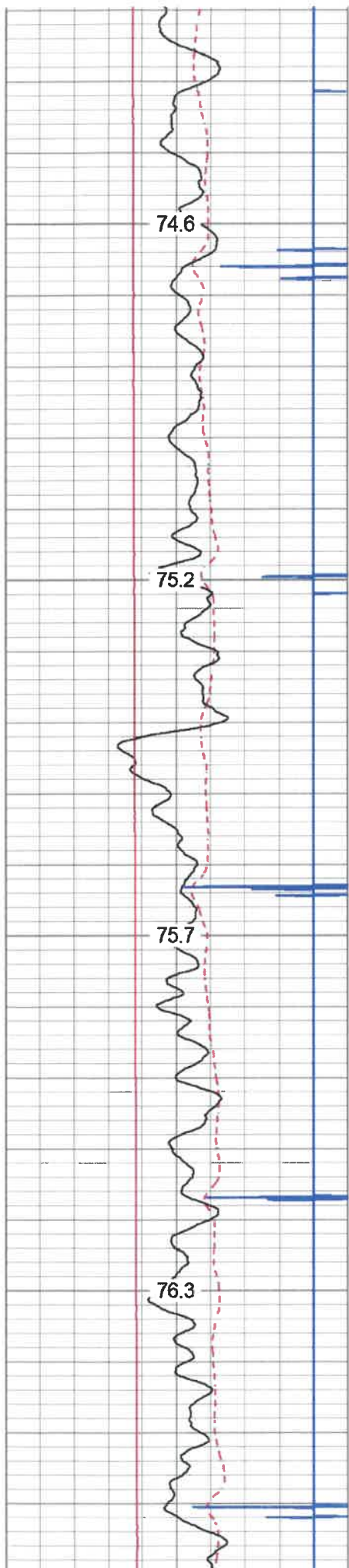
2450

2500

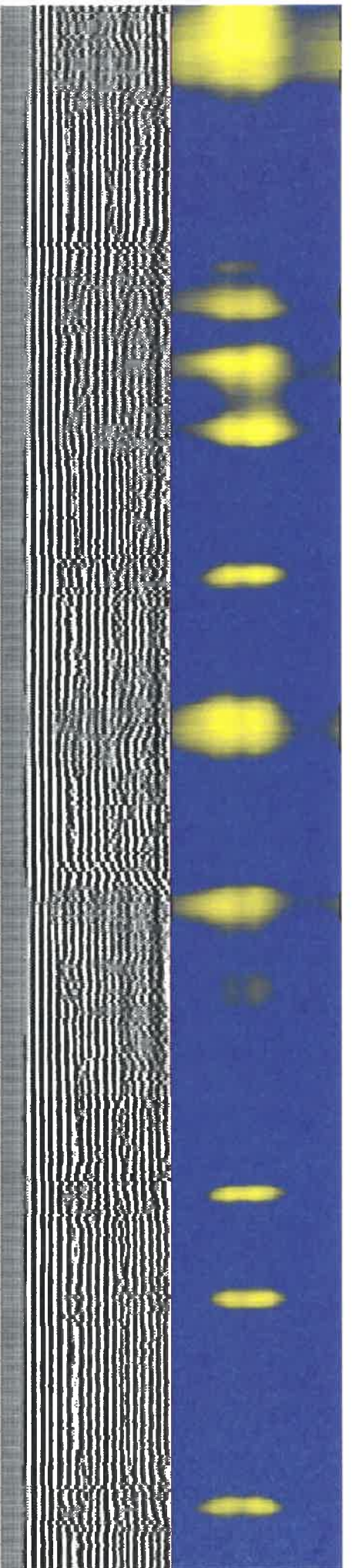
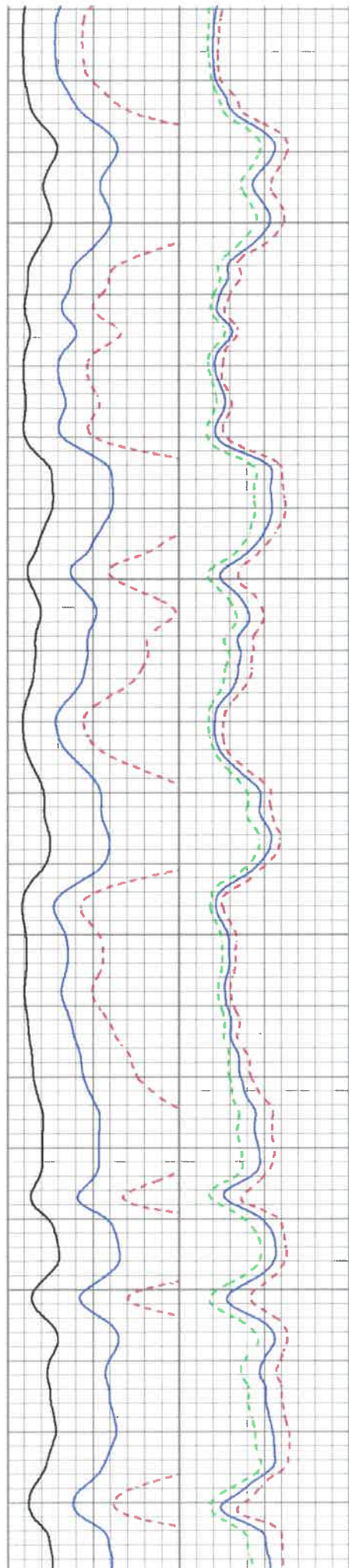
2550

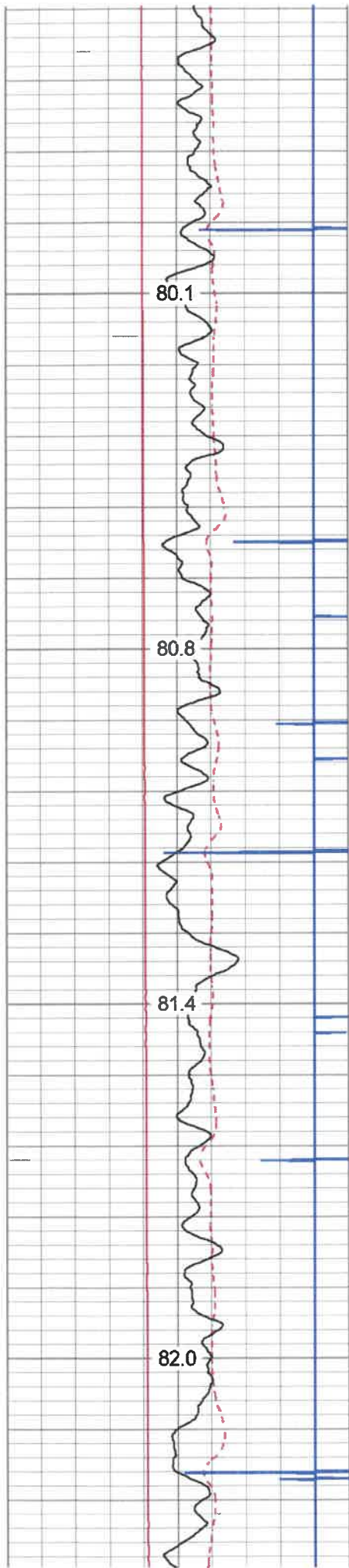
2600





2850
2900
2950
3000



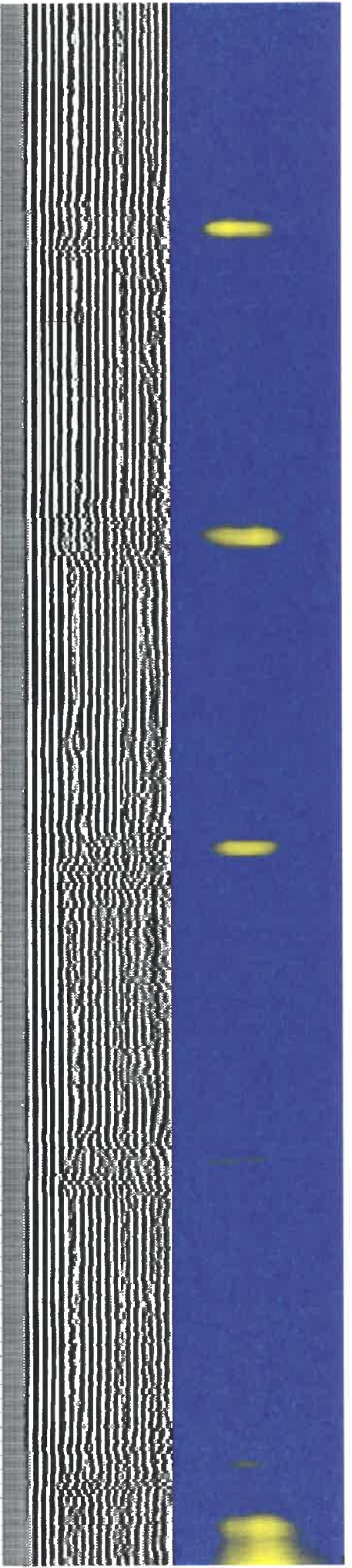
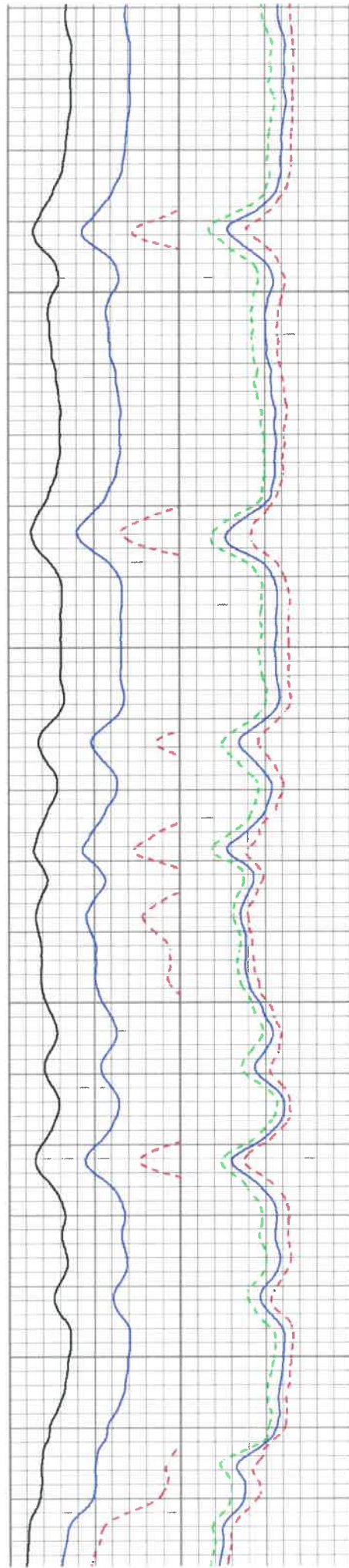


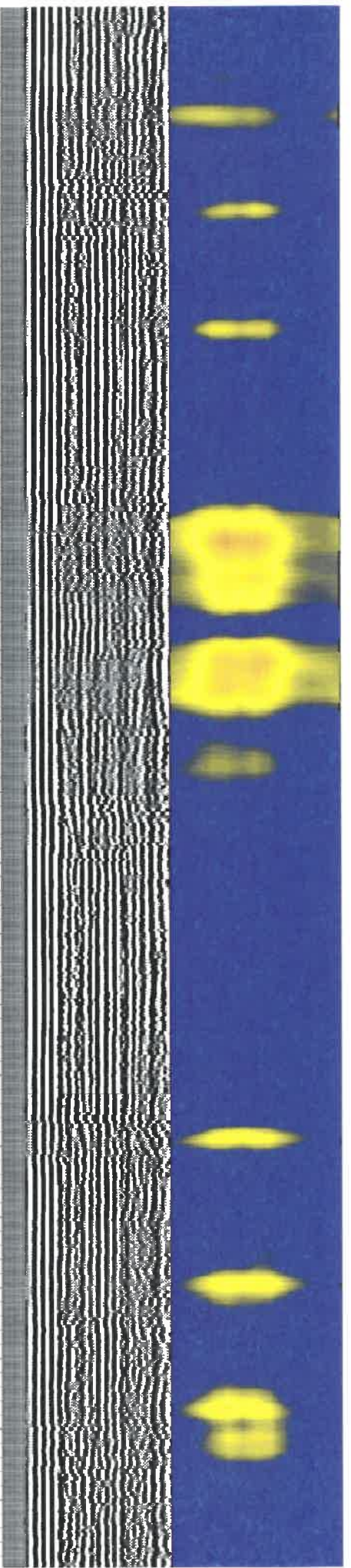
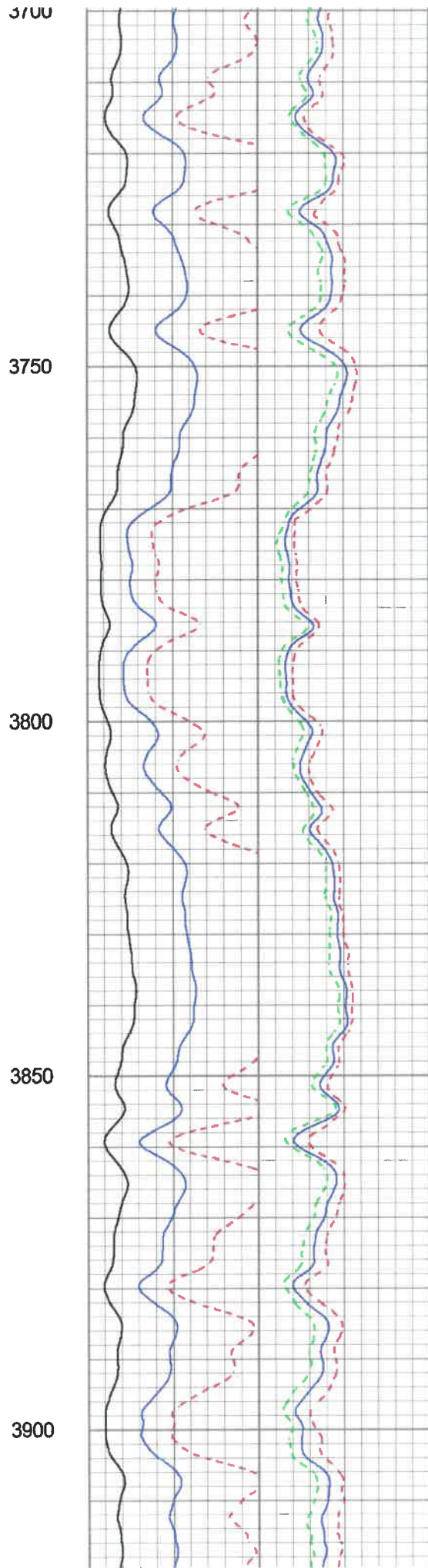
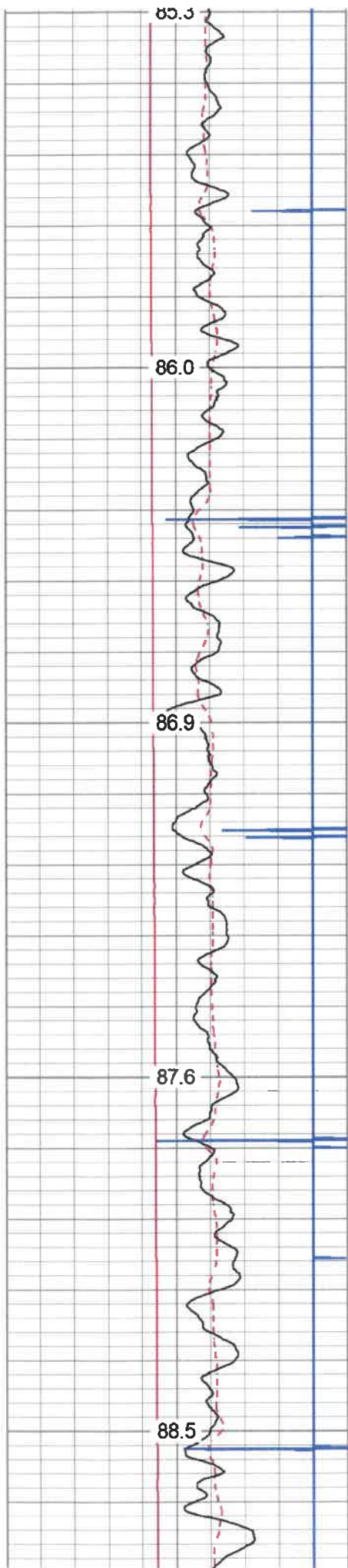
3300

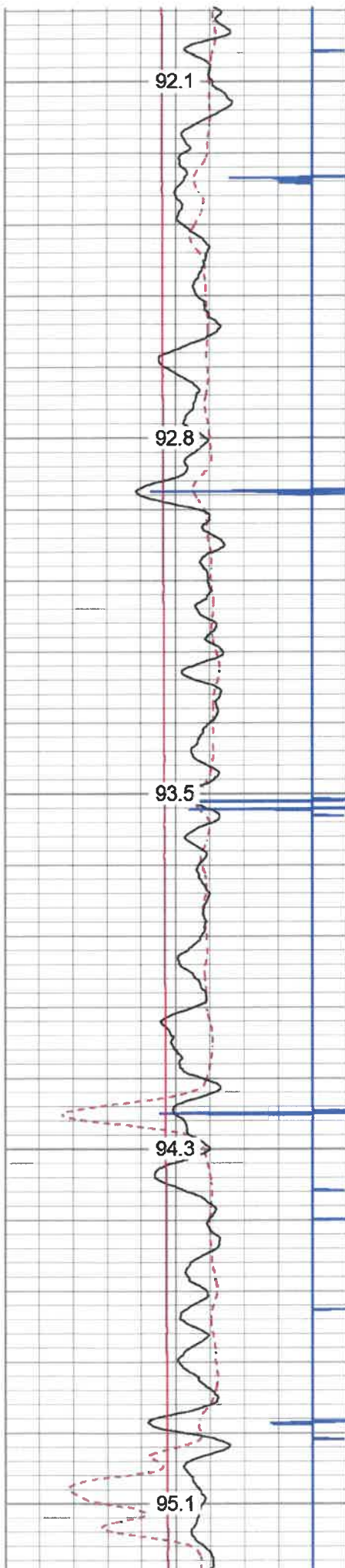
3350

3400

3450







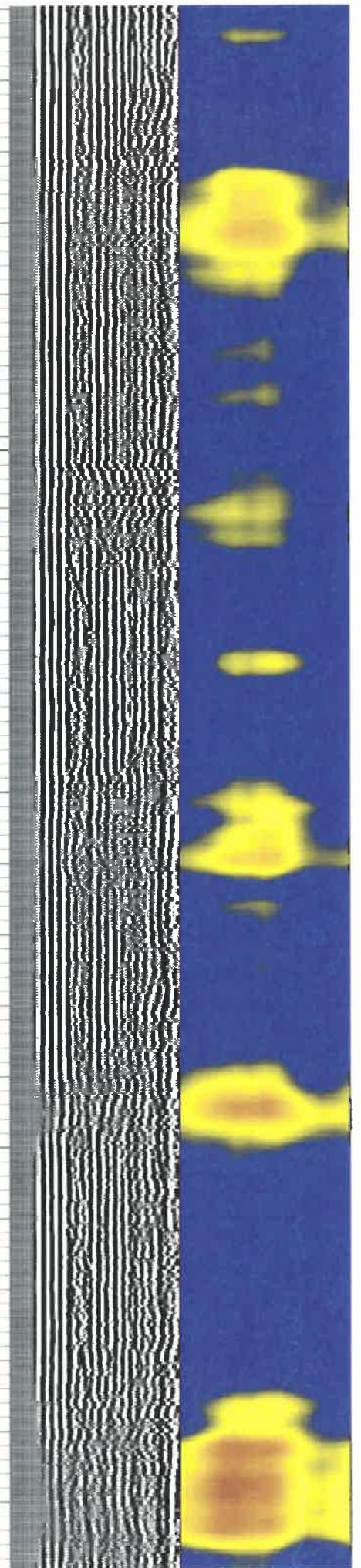
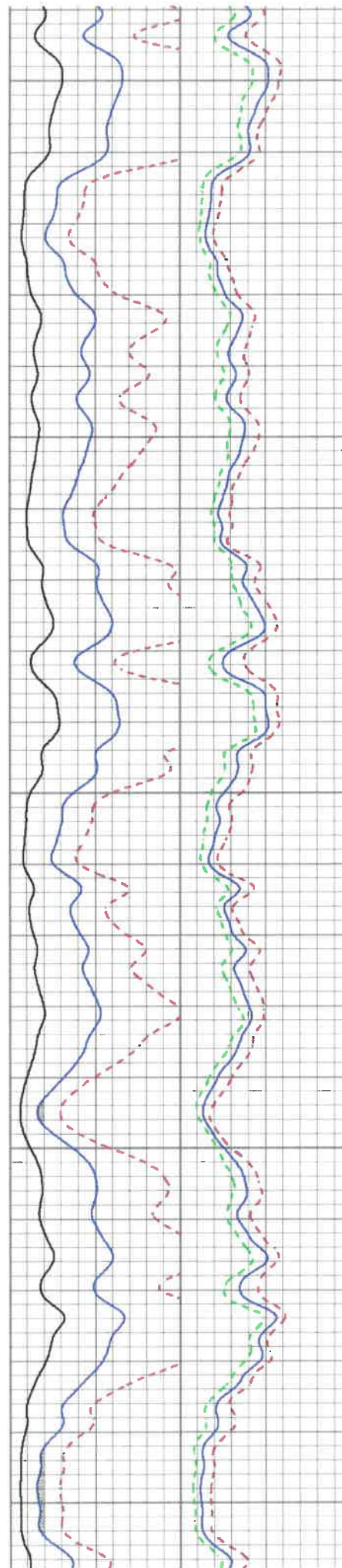
4150

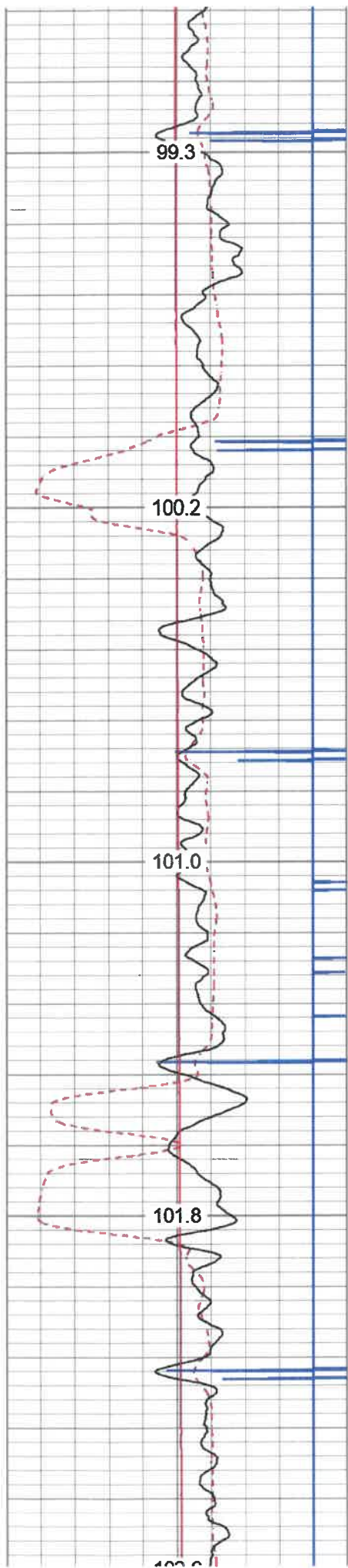
4200

4250

4300

4350





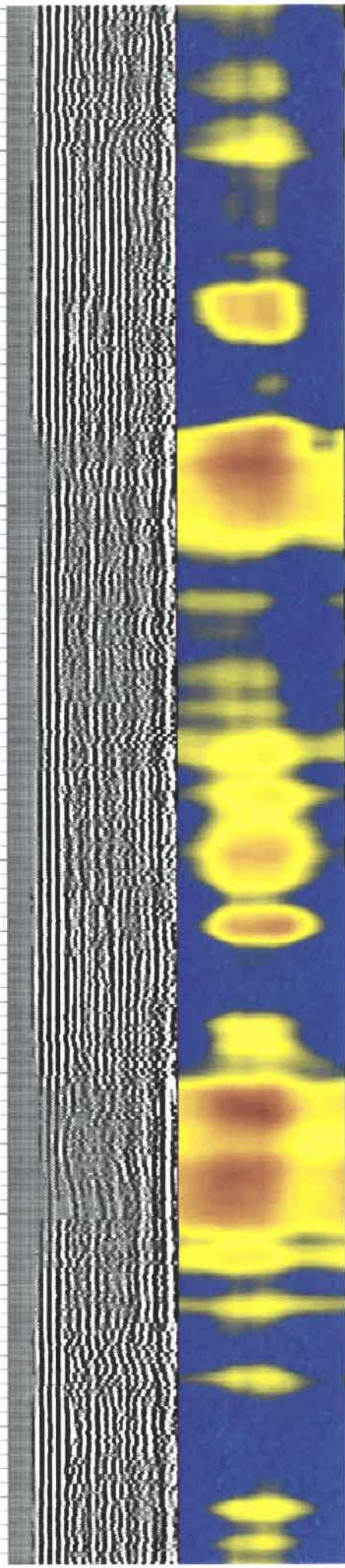
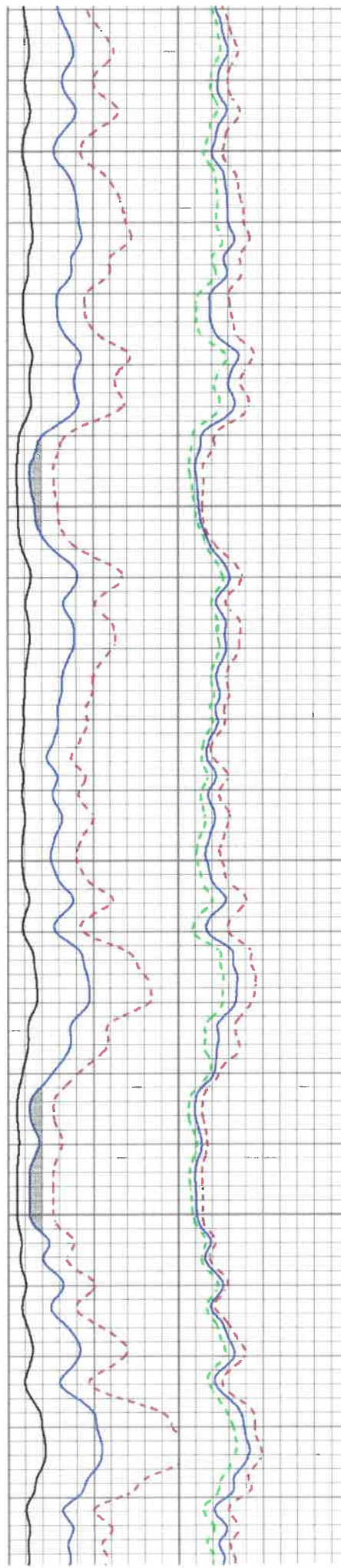
4600

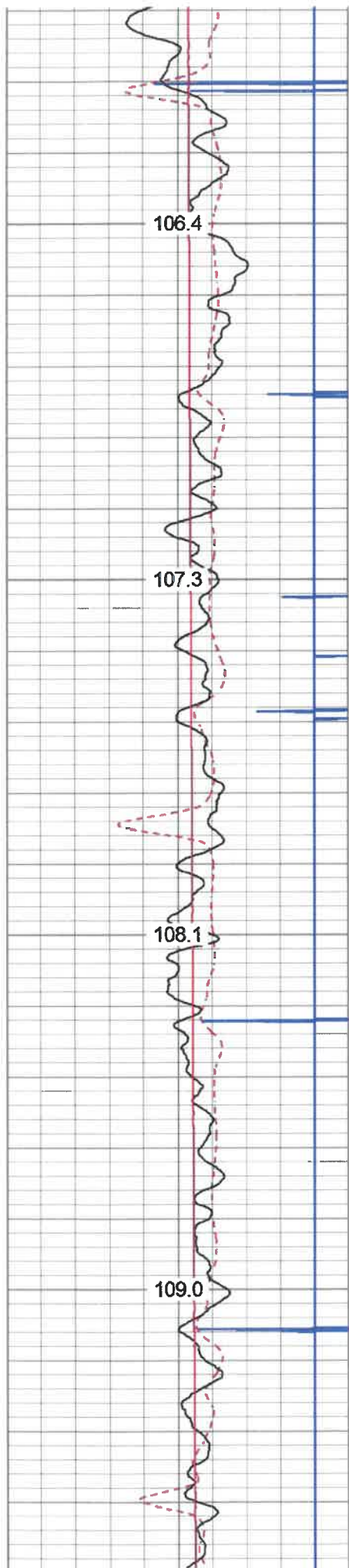
4650

4700

4750

4800



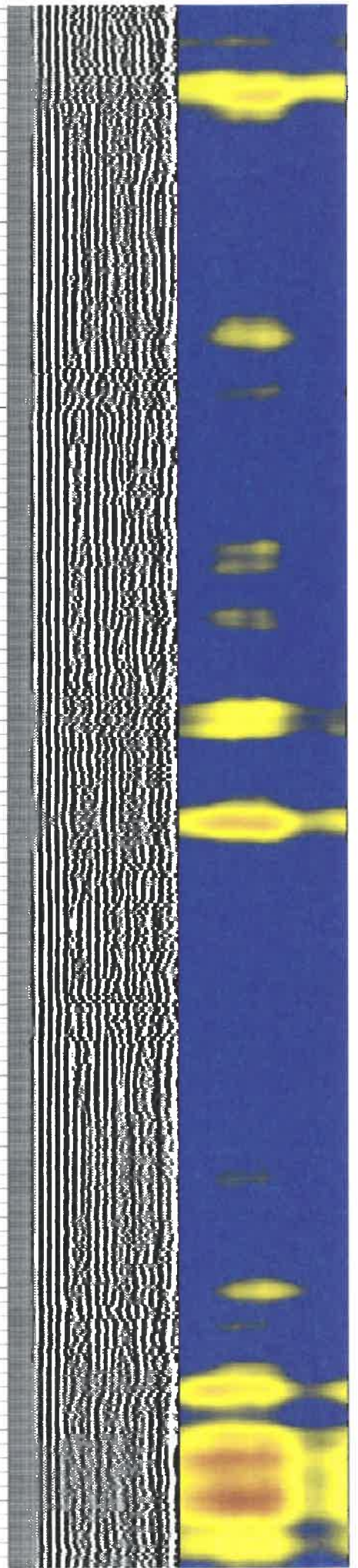
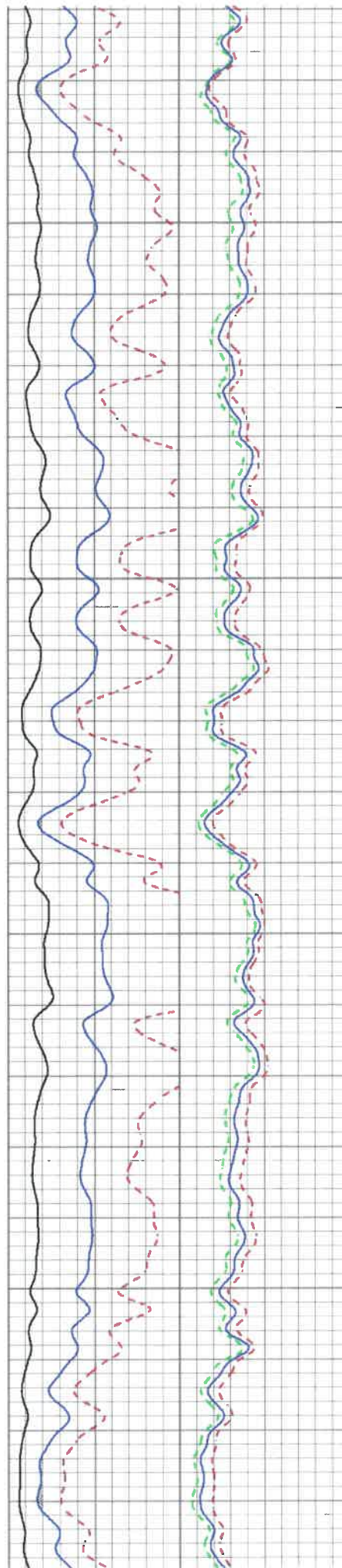


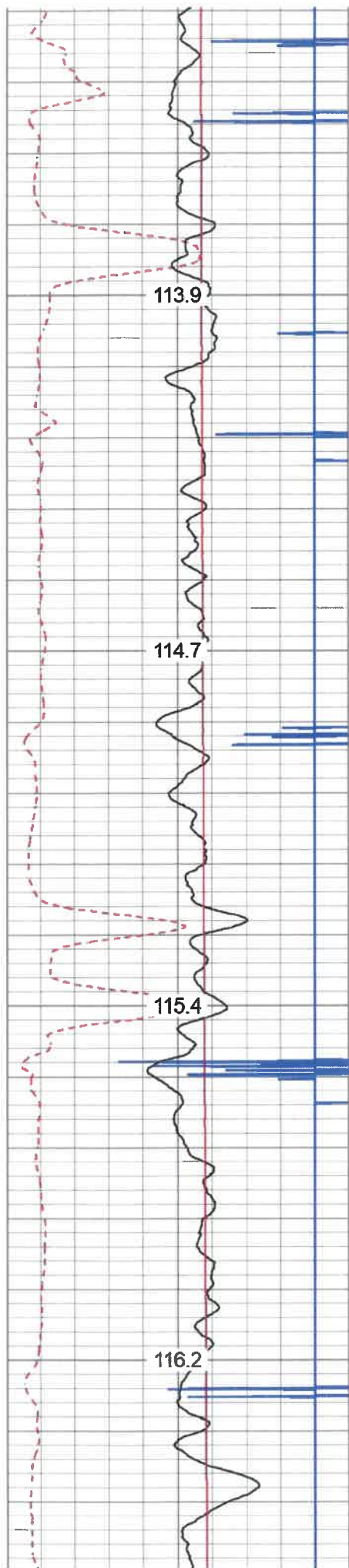
5050

5100

5150

5200



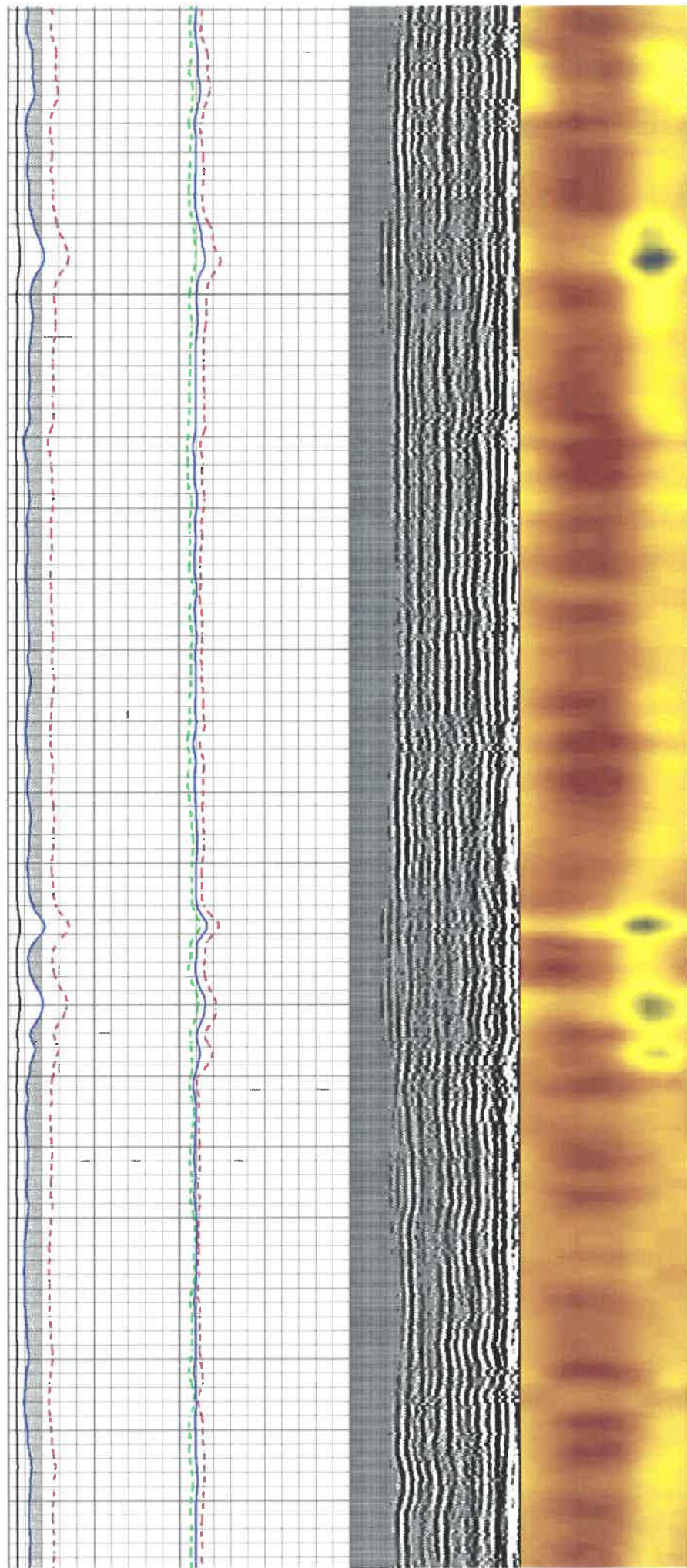


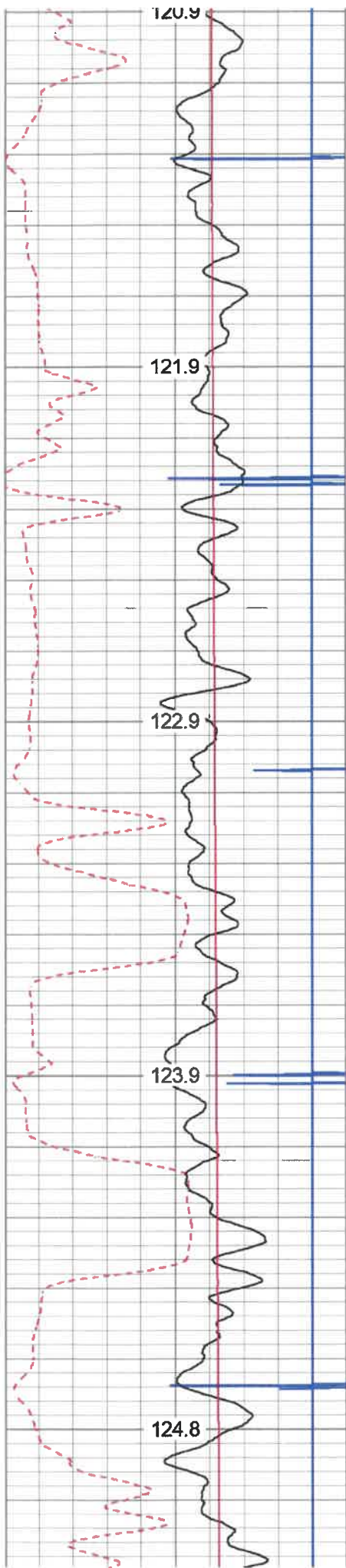
5500

5550

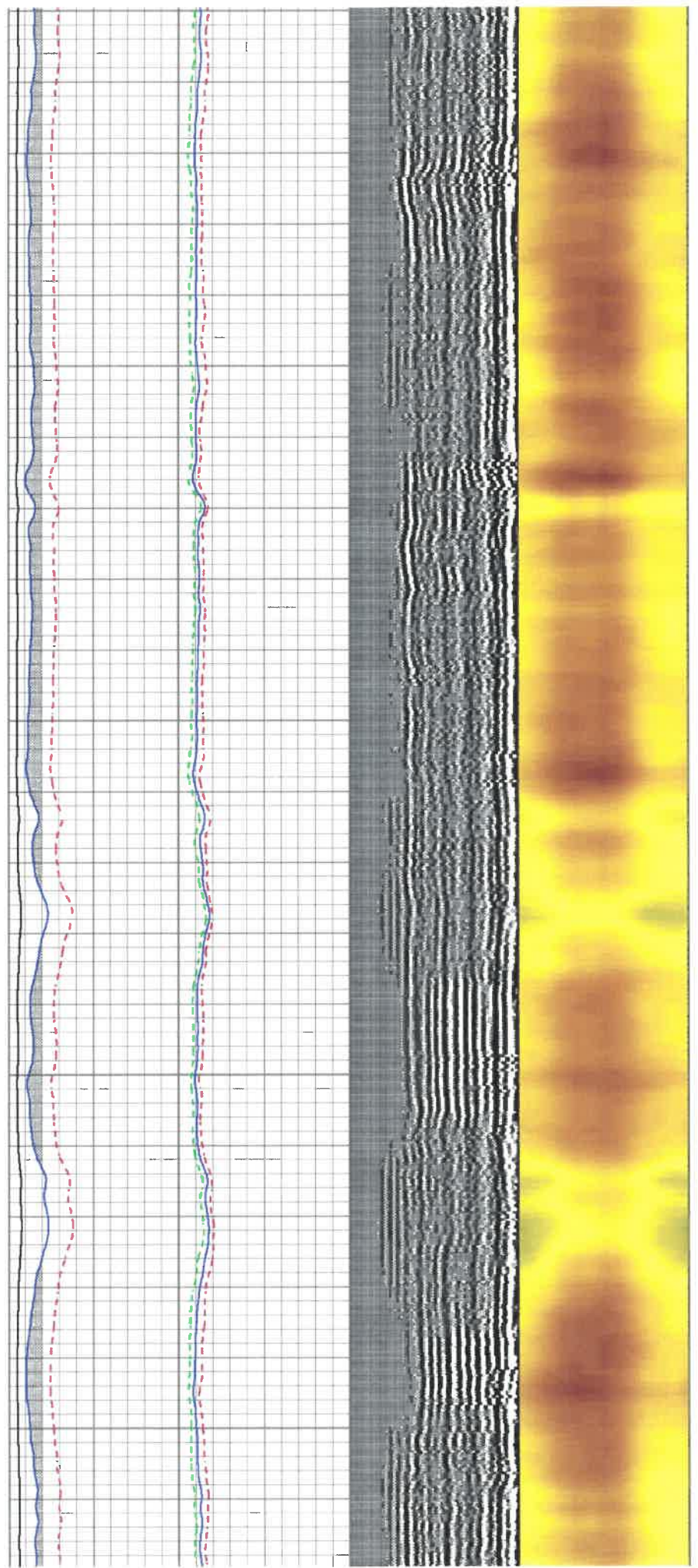
5600

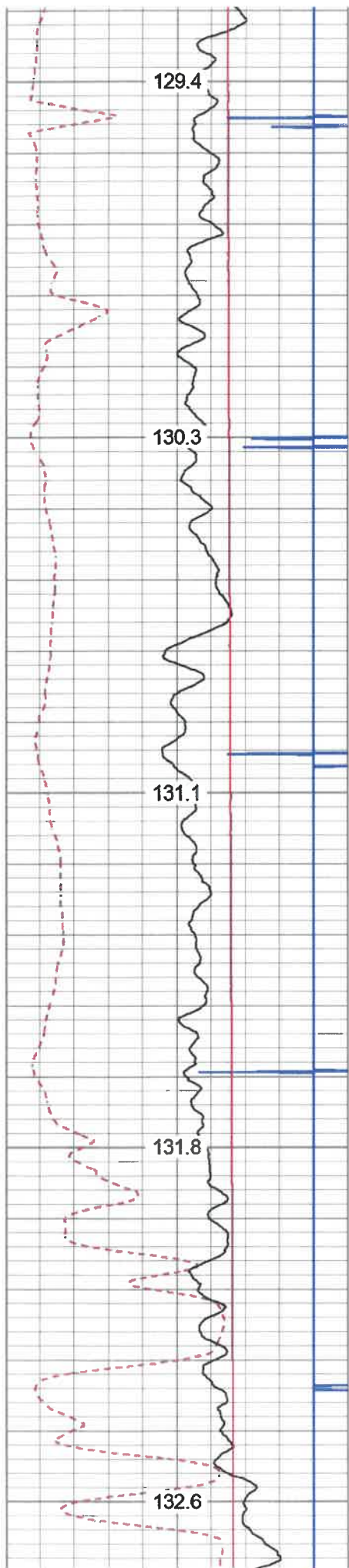
5650



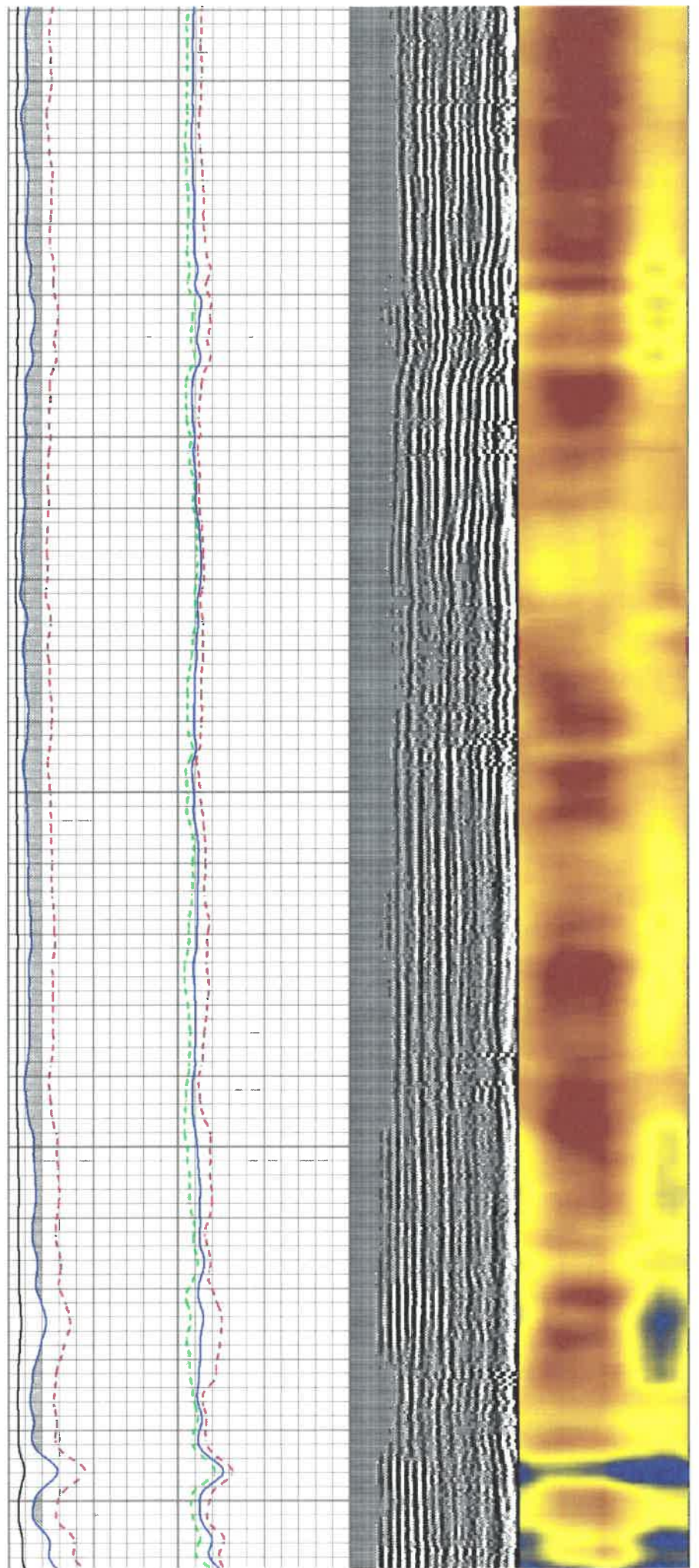


5900
5950
6000
6050
6100





6350
6400
6450
6500
6550



CASEOD : Casing O.D.
CASETHCK : Casing Thickness
CASEWGHT : Casing Weight
MAXAMPL : Maximum Amplitude

PPT : Predicted Pipe Time
SRFTEMP : Surface Temperature
TDEPTH : Total Depth

Calibration Report

Database File antero_dierkes_2h.db
Dataset Pathname pass2
Dataset Creation Tue Nov 12 16:06:07 2019

Gamma Ray Calibration Report

Serial Number: IPSNO-03
Tool Model: Tek-Co 2 3/4
Performed: Tue Nov 12 16:11:18 2019

Calibrator Value: 1.0

Background Reading: 0.0 cps
Calibrator Reading: 1.0 cps

Sensitivity: 0.5000 /cps

Segmented Cement Bond Log Calibration Report

Serial Number: IOL40-05
Tool Model: Tek12

Calibration Casing Diameter: 5.500 in
Calibration Depth: 115.242 ft

Master Calibration, performed Tue Nov 12 15:20:50 2019:

	Raw (v)		Calibrated (mv)		Results	
	Zero	Cal	Zero	Cal	Gain	Offset
3'	0.037	0.965	3.500	71.921	73.765	0.737
CAL	0.012	0.653				
5'	0.006	1.084	3.500	71.921	63.485	3.090
SUM						
S1	0.036	1.681	0.000	100.000	60.777	-2.175
S2	0.037	1.746	0.000	100.000	58.506	-2.140
S3	0.037	1.868	0.000	100.000	54.615	-2.019
S4	0.037	1.781	0.000	100.000	57.350	-2.126
S5	0.037	1.688	0.000	100.000	60.555	-2.221
S6	0.036	1.694	0.000	100.000	60.310	-2.159
S7	0.037	1.634	0.000	100.000	62.637	-2.337
S8	0.034	1.627	0.000	100.000	62.776	-2.146
S9	0.039	1.639	0.000	100.000	62.495	-2.427
S10	0.038	1.659	0.000	100.000	61.700	-2.374
S11	0.036	1.612	0.000	100.000	63.433	-2.283
S12	0.037	1.623	0.000	100.000	63.071	-2.357

Temperature Calibration Report

Serial Number: IOL40-05
Tool Model: Tek12
Performed: Wed Jul 31 10:53:14 2013

	Reference	Reading
Low Reference:	0.00 degF	0.00 usec
High Reference:	1.00 degF	1.00 usec

Gain: 0.33

Subject:	antero_dierkes_2h.02. hole/well/ant/17p002
Total length:	20.07 ft
Total weight:	250.00 lb
O.D.:	3.25 in



Company	Antero Resources Corporation
Well	Dierkes Unit 2H
Field	
County	Tyler
State	WV
Country	US