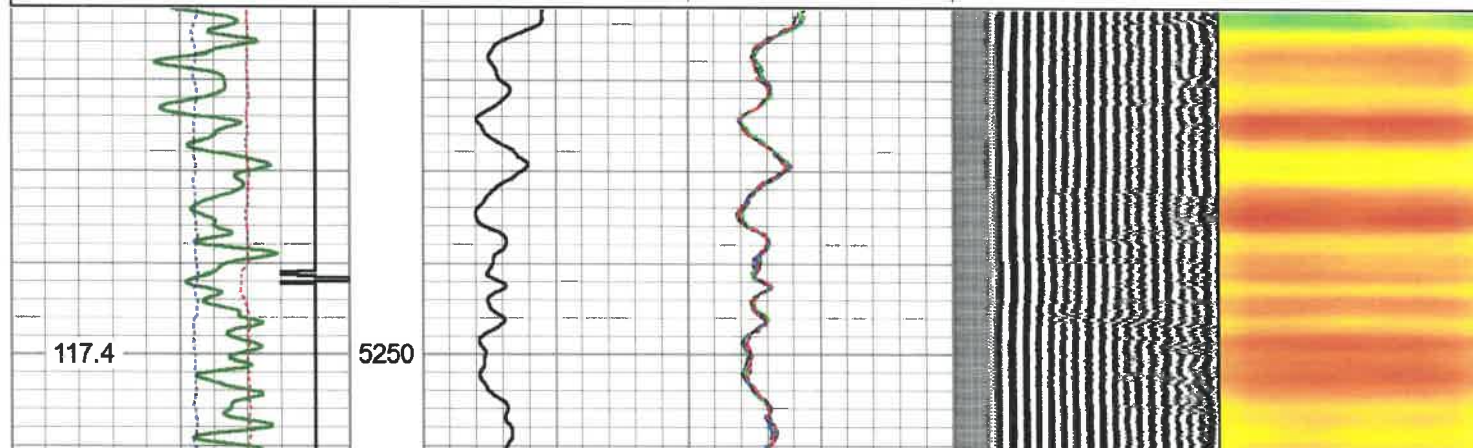
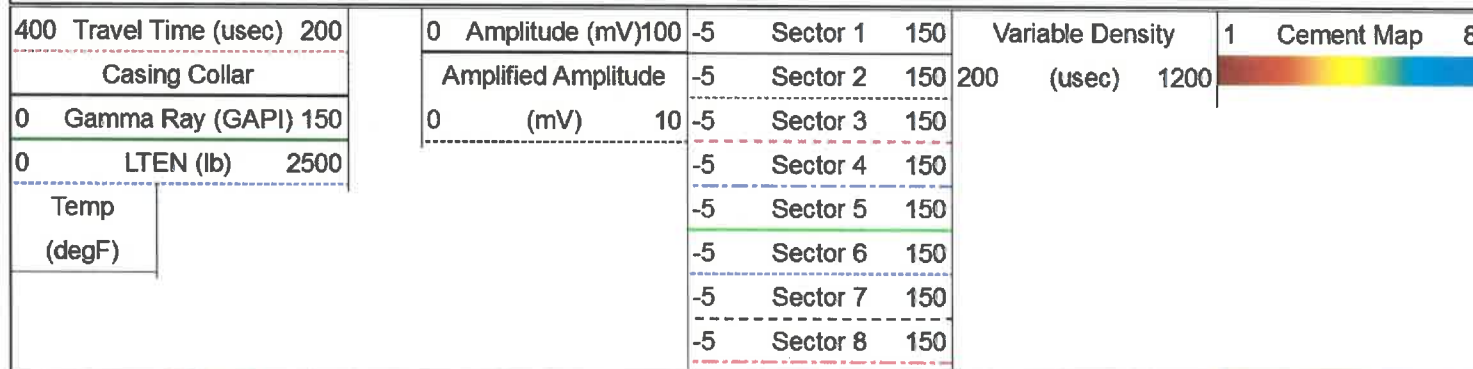
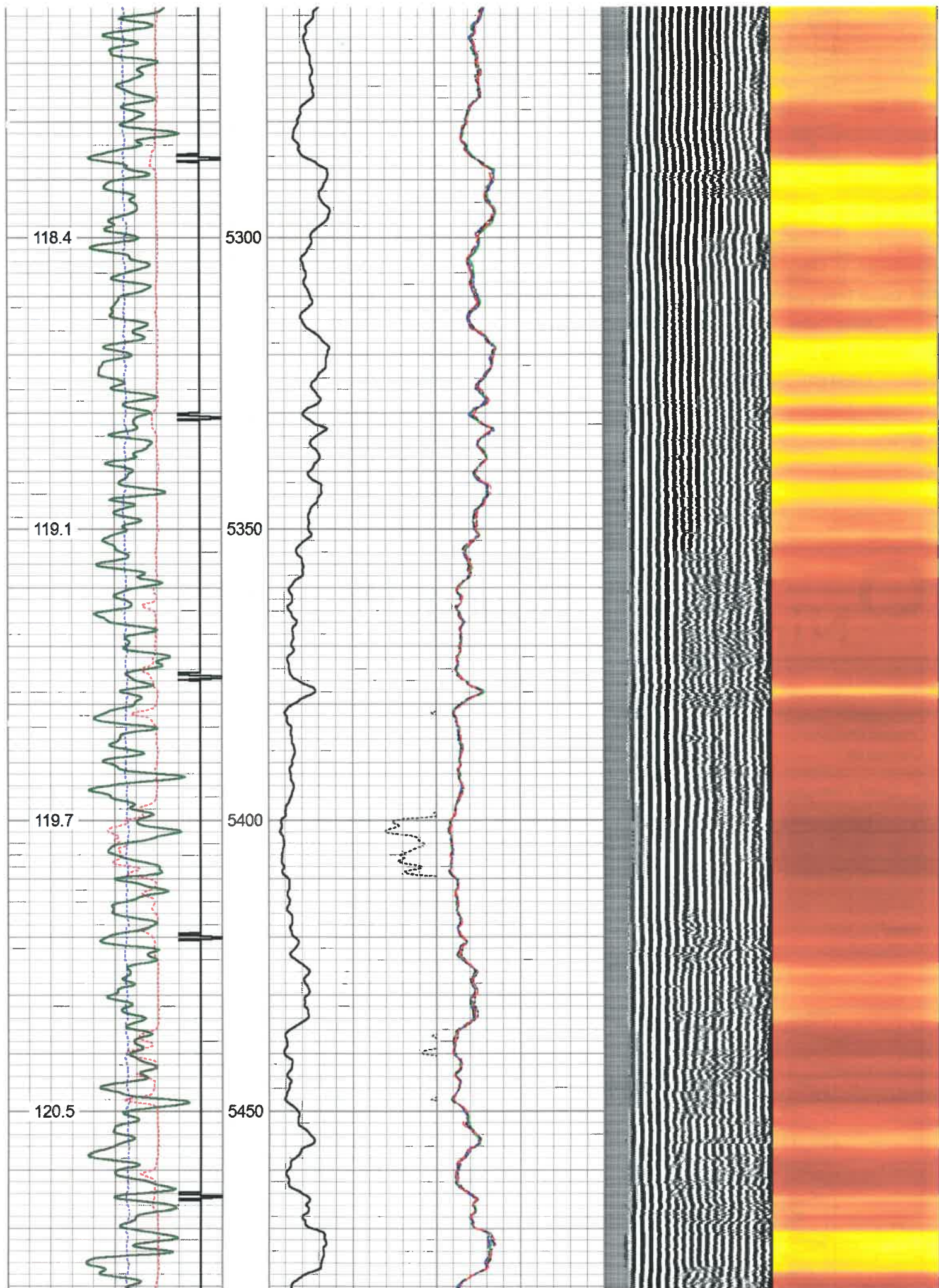


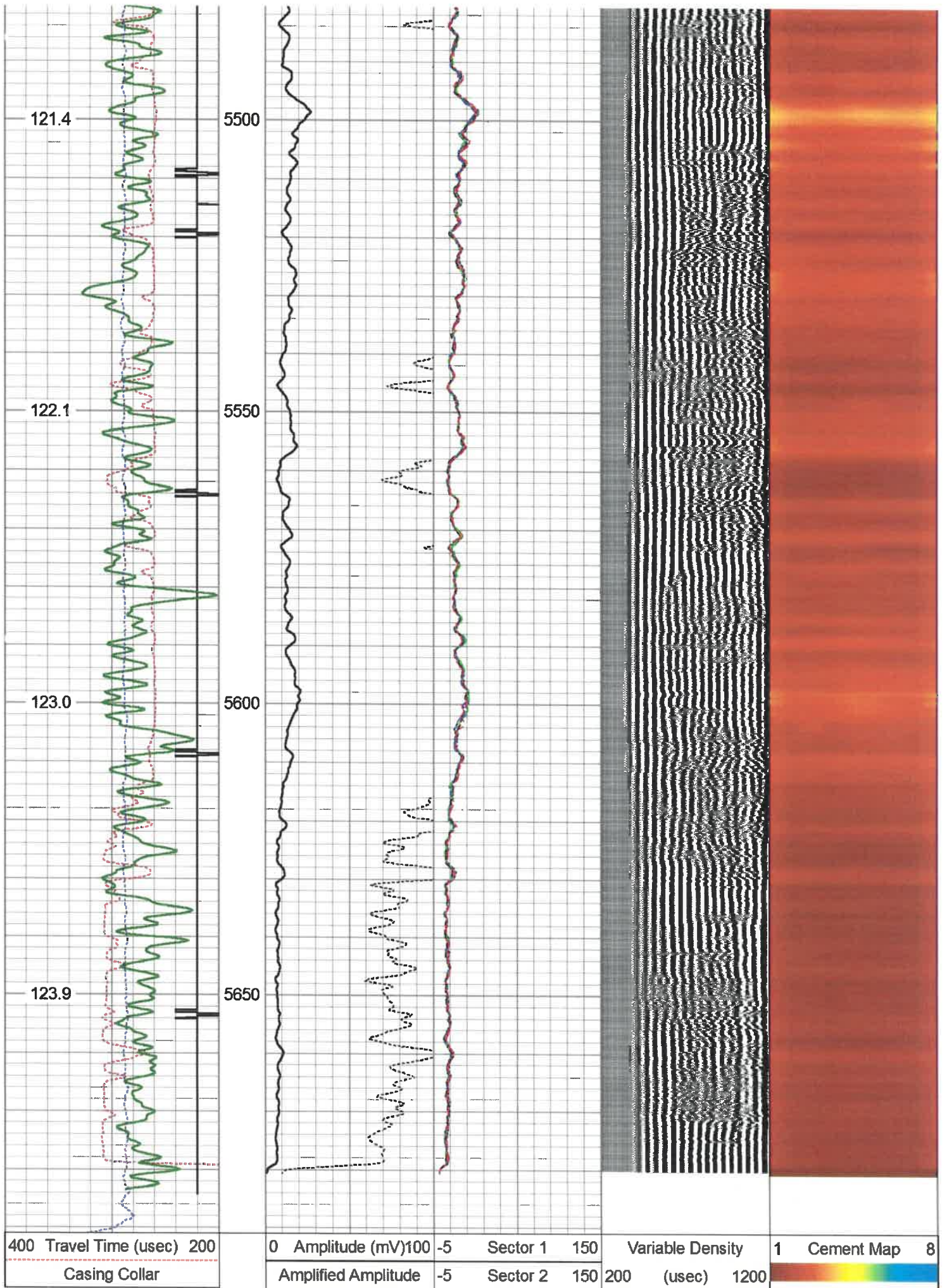

# Repeat Pass 0 PSI

Database File antero\_gauge\_3h\_rcbl\_23\_jun\_19.db  
 Dataset Pathname marcellus/3h/rcbl/pass2  
 Presentation Format scbl03  
 Dataset Creation Mon Jun 24 00:23:52 2019  
 Charted by Depth in Feet scaled 1:240









400 Travel Time (usec) 200  
 Casing Collar

0 Amplitude (mV) 100 -5 Sector 1 150  
 Amplified Amplitude -5 Sector 2 150

Variable Density  
 200 (usec) 1200

1 Cement Map 8

0	Gamma Ray (GAPI) 150	0	(mV)	10	-5	Sector 3	150
0	LTEN (lb) 2500				-5	Sector 4	150
	Temp (degF)				-5	Sector 5	150
					-5	Sector 6	150
					-5	Sector 7	150
					-5	Sector 8	150

**Calibration Report**

Database File antero\_gauge\_3h\_rcbl\_23\_jun\_19.db  
 Dataset Pathname marcellus/3h/rcbl/pass4  
 Dataset Creation Mon Jun 24 00:34:00 2019

**Gamma Ray Calibration Report**

Serial Number: FW1211-86  
 Tool Model: Probe  
 Performed: Sun May 19 12:22:44 2019

Calibrator Value: 1.0 GAPI

Background Reading: 0.0 cps  
 Calibrator Reading: 1.0 cps

Sensitivity: 0.7000 GAPI/cps

**Segmented Cement Bond Log Calibration Report**

Serial Number: FW1312-32  
 Tool Model: Probe275T

Calibration Casing Diameter: 5.500 in  
 Calibration Depth: 195.825 ft

**Master Calibration, performed (Derived):**

	Raw (v)		Calibrated (mv)		Results	
	Zero	Cal	Zero	Cal	Gain	Offset
3'	0.000	1.119	1.000	71.921	63.356	0.998
CAL	-0.046	1.834				
5'	0.000	1.092	1.000	71.921	64.955	0.999
SUM						
S1	0.000	1.214	0.000	100.000	82.371	-0.003
S2	0.000	1.084	0.000	100.000	92.236	-0.003
S3	0.000	1.065	0.000	100.000	93.925	-0.003
S4	0.000	1.067	0.000	100.000	93.691	-0.003
S5	0.000	1.095	0.000	100.000	91.356	-0.003
S6	0.000	1.162	0.000	100.000	86.094	-0.003
S7	0.000	1.198	0.000	100.000	83.452	-0.003
S8	0.000	1.187	0.000	100.000	84.263	-0.003

**Internal Reference Calibration, performed (Not Performed):**

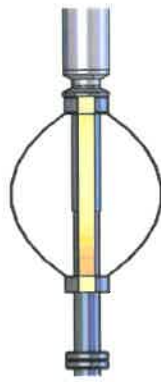
	Raw (v)		Calibrated (v)		Results	
	Zero	Cal	Zero	Cal	Gain	Offset
CAL	0.000	0.000	-0.046	1.834	1.000	0.000

Air Zero Calibration, performed Sat Jun 22 12:51:05 2019:

	Raw (v)	Calibrated (v)	Results
	Zero	Zero	Offset
3'	0.000	0.000	0.000
5'	0.000	0.000	0.000
SUM			
S1	0.000	0.000	0.000
S2	0.000	0.000	0.000
S3	0.000	0.000	0.000
S4	0.000	0.000	0.000
S5	0.000	0.000	0.000
S6	0.000	0.000	0.000
S7	0.000	0.000	0.000
S8	0.000	0.000	0.000

Sensor	Offset (ft)	Schematic	Description	Length (ft)	O.D. (in)	Weight (lb)
HeadVolt	16.99		CHD-Titan Titan 1 7/16" GO Cablehead	1.00	1.44	5.00
Temp	14.14		CENT-Overbody Antelope (SP-919-0233)	1.67	4.88	5.00
WVFS8	11.91		RBT-Probe275T (FW1312-32) Probe 2.75" Radial with Integral Temperature Sub	9.39	2.75	90.00
WVFS7	11.91					
WVFS6	11.91					
WVFS5	11.91					
WVFS4	11.91					
WVFS3	11.91					
WVFS2	11.91					
WVFS1	11.91					
WVF3FT	11.91					
WVF5FT	10.91					
WVFCAL	7.66					
HEADVOLT	7.66					
CCL	6.75					
GR	5.42			CENT-Overbody Antelope (SP-919-0233)	1.67	4.88
			GR-Probe (FW1211-86) Probe 2 3/4" Logging Gamma Ray	4.78	2.75	57.00

RECEIVED  
Office of Oil and Gas  
AUG 31 2020  
WV Department of  
Environmental Protection



CENT-Probe275  
2.75" Centralizer

2.88

2.75

20.00

Dataset: antero\_gauge\_3h\_rcbl\_23\_jun\_19.db: marcellus/3h/rcbl/pass4  
Total length: 18.05 ft  
Total weight: 182.00 lb  
O.D.: 4.88 in



Nine

Company Antero Resources  
Well Gauge 3H  
Field Marcellus  
County Tyler  
State WV