



**RADIAL CEMENT BOND LOG
GAMMA RAY / CCL /VDL**

Company	ANTERO RESOURCES CORPORATION	
Well	STERLING 1H	
Field	TYLER	
County	TYLER	
State	W.V.	
Company	ANTERO RESOURCES CORPORATION	
Well	STERLING 1H	
Field	TYLER	
County	TYLER	State W.V.
Location:	API #: 47-095-02520-0000	Other Services
	AFE# A06612	
SEC	TWP	RGE
Permanent Datum	G.L.	Elevation 827'
Log Measured From	K.B. OF 30'	K.B. 1084'
Drilling Measured From	K.B.	D.F. 1084'
		G.L. 1114'

Date	5/4/19
Run Number	ONE
Depth Driller	17844'
Depth Logger	7070'
Bottom Logged Interval	7070'
Top Log Interval	SURFACE
Open Hole Size	8.5"
Type Fluid	WATER
Density / Viscosity	N/A
Max. Recorded Temp.	140.5 DEG
Estimated Cement Top	370'
Time Well Ready	N/A
Time Logger on Bottom	N/A
Equipment Number	624874
Location	BRIDGEPORT W.V.
Recorded By	P DAVIDSON
Witnessed By	J.BURKS

Borehole Record		Casing Record					
Run Number	Bit	From	To	Size	Weight	From	To
				5.5"	23	17844'	SURFACE

<<< Fold Here >>>

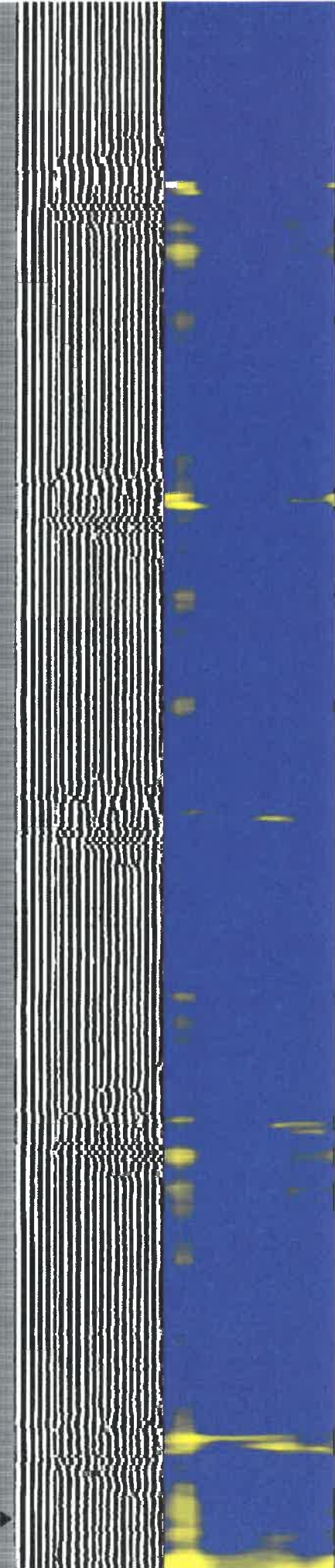
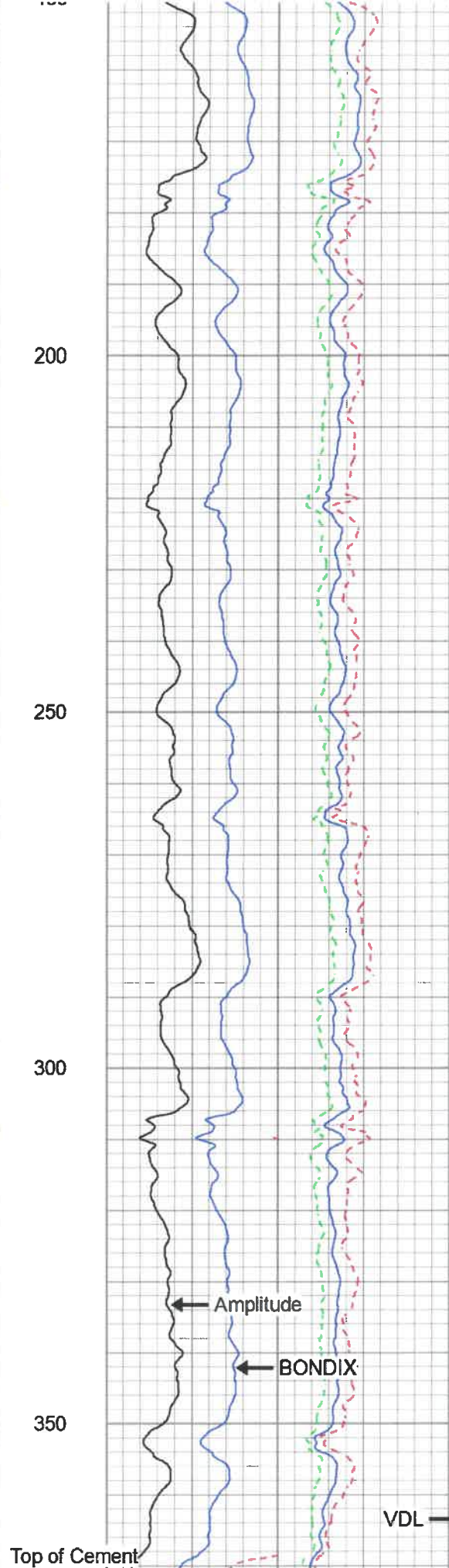
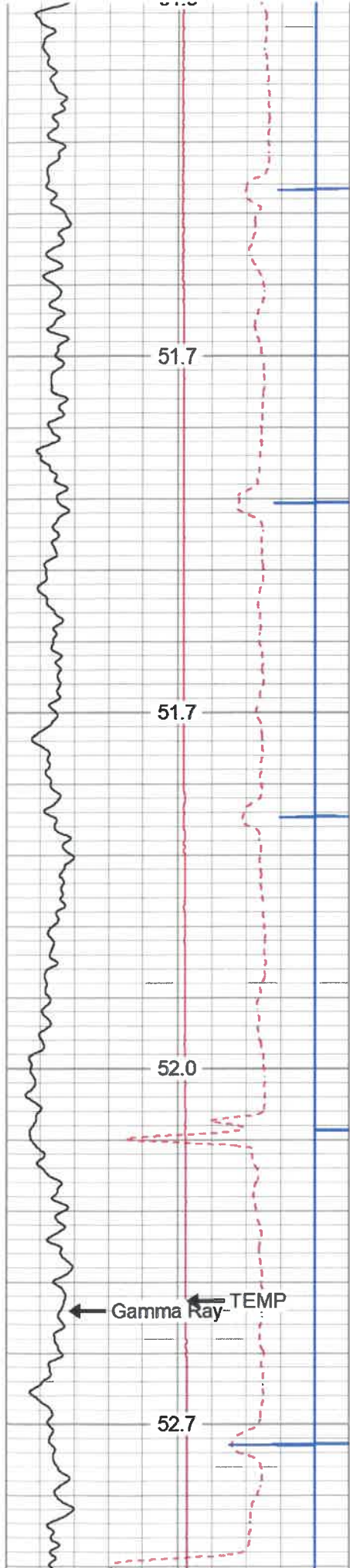
All interpretations are opinions based on inferences from electrical or other measurements and we cannot and do not guarantee the accuracy or correctness of any interpretation, and we shall not, except in the case of gross or willful negligence on our part, be liable or responsible for any loss, costs, damages, or expenses incurred or sustained by anyone resulting from any interpretation made by any of our officers, agents or employees. These interpretations are also subject to our general terms and conditions set out in our current Price Schedule.

Comments

THANK YOU FOR USING KLX ENERGY SERVICES
 LOG WAS RAN ON 5.5 CASING WITH 1500PSI ON WELL
 ZERO AT K.B. OF 30 FT
 MARKER JOINT @6035-6051'
 LOG WAS SHIFTED UP HOLE 20 '

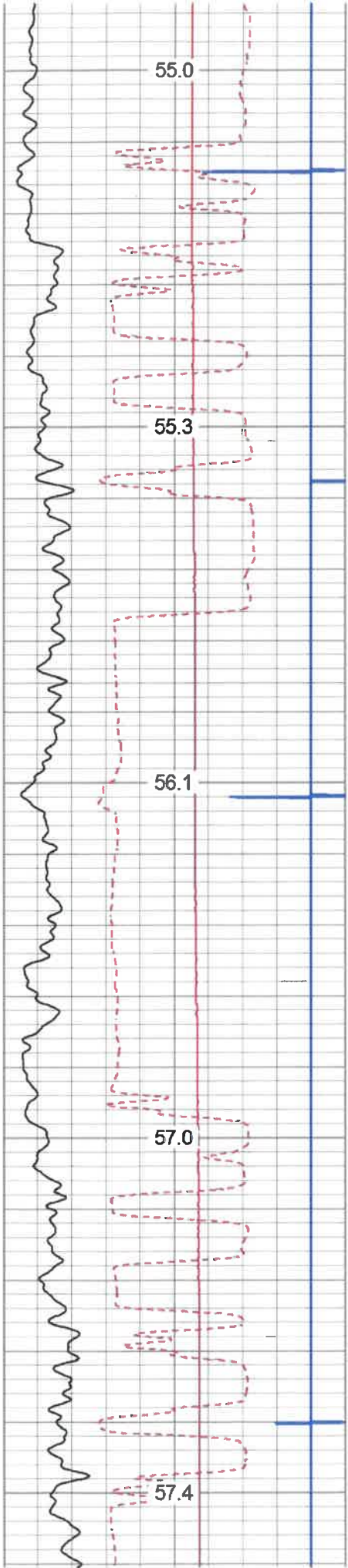


MAIN LOG



Top of Cement

VDL



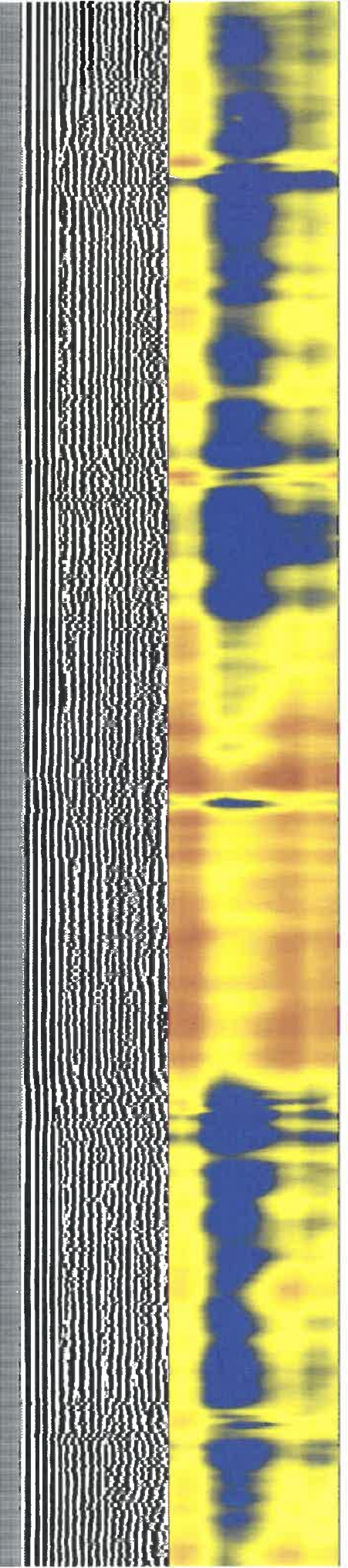
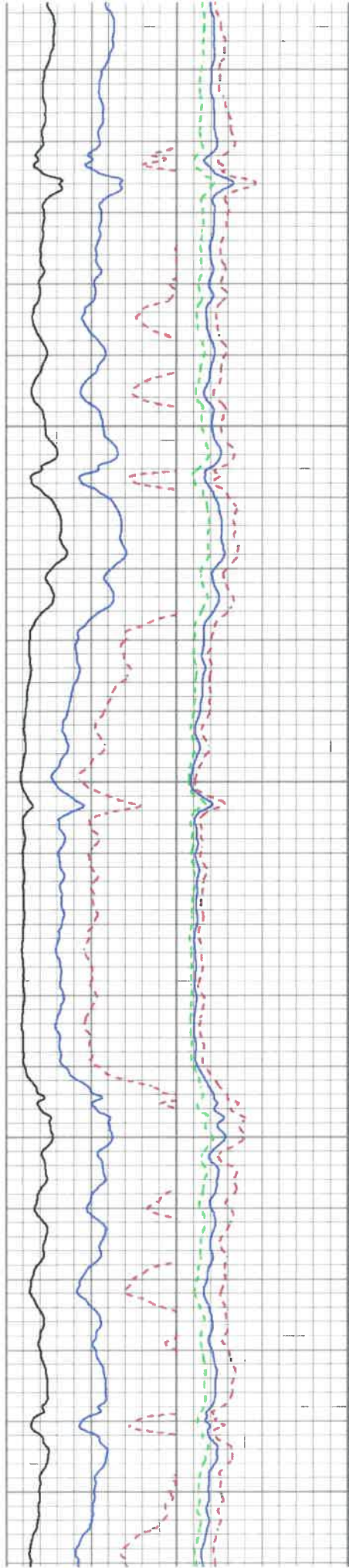
600

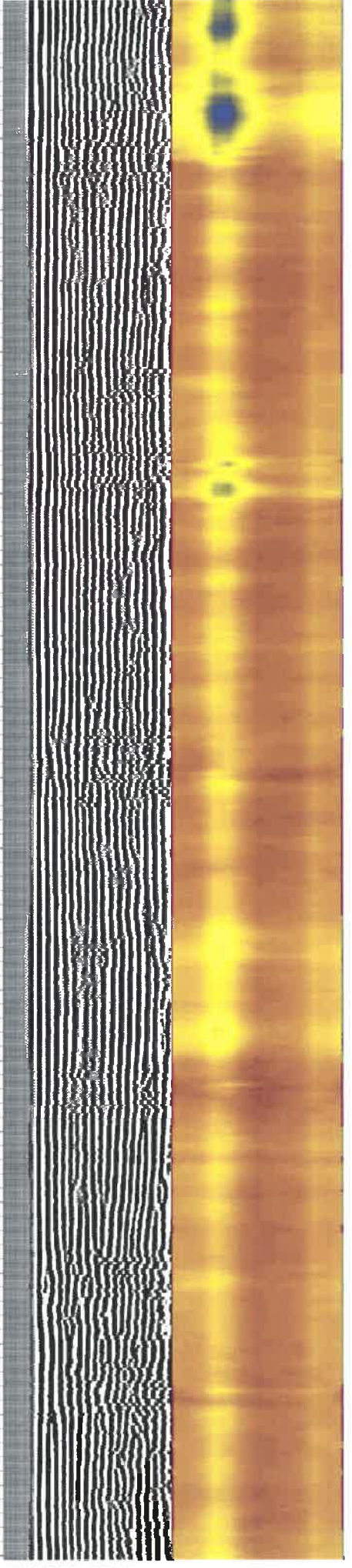
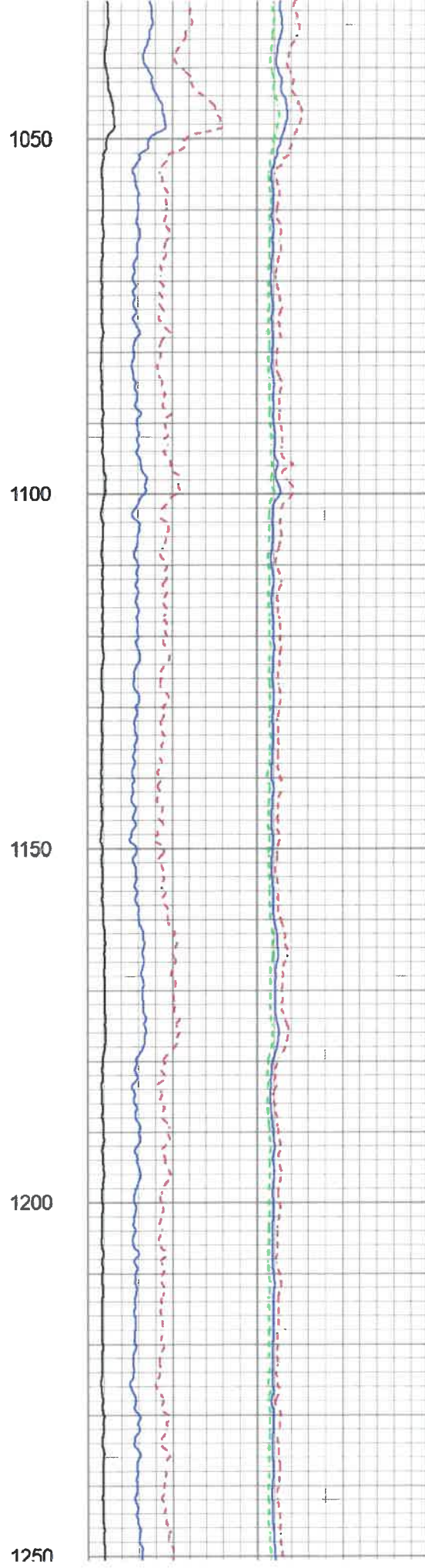
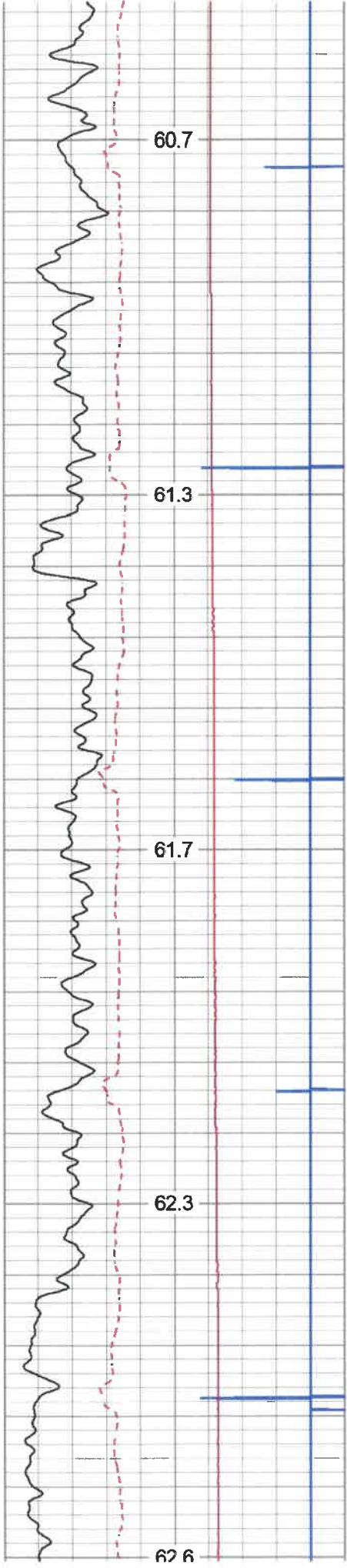
650

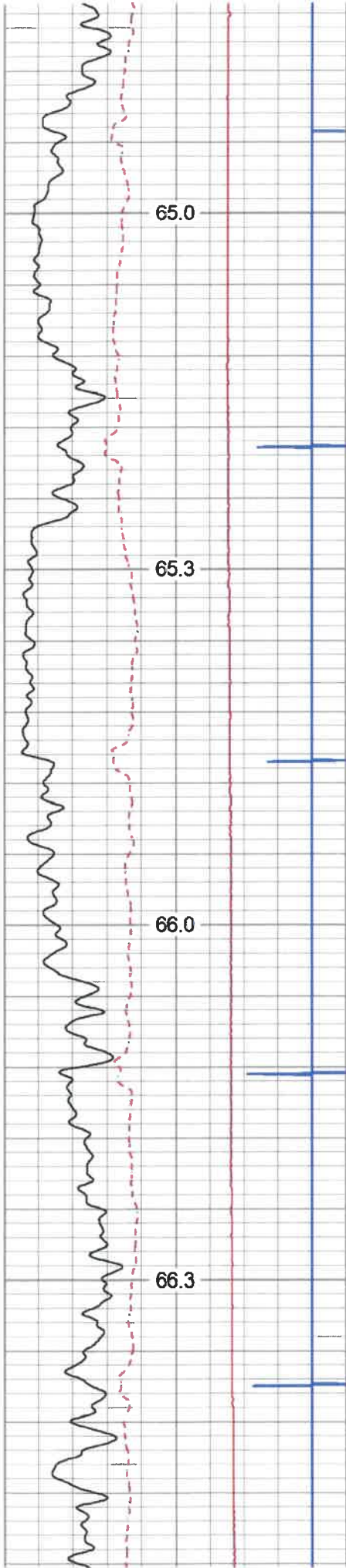
700

750

800





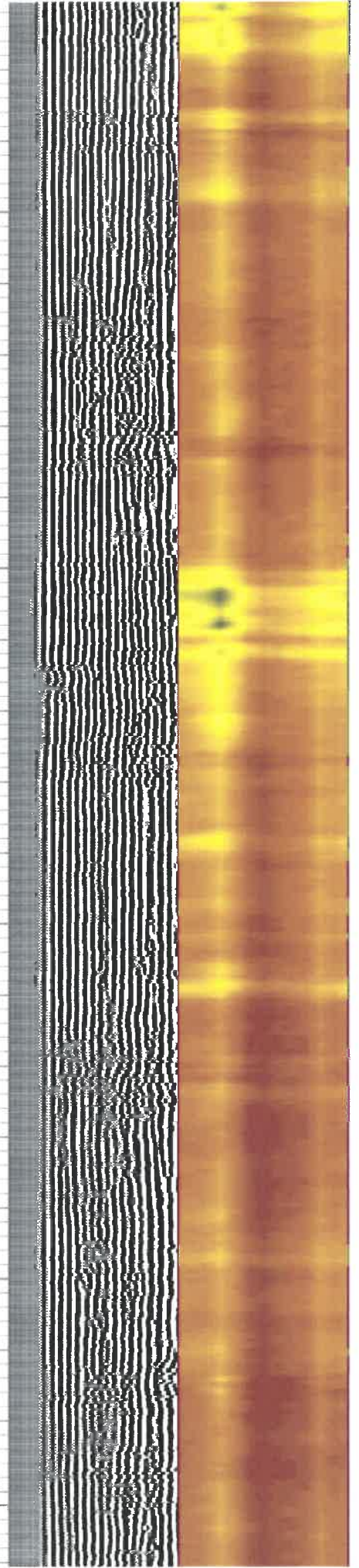


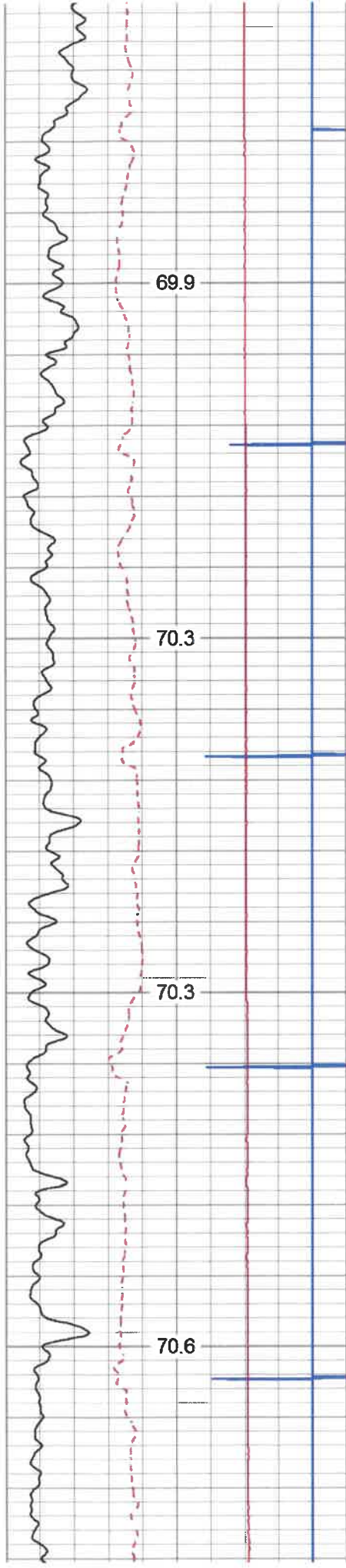
1500

1550

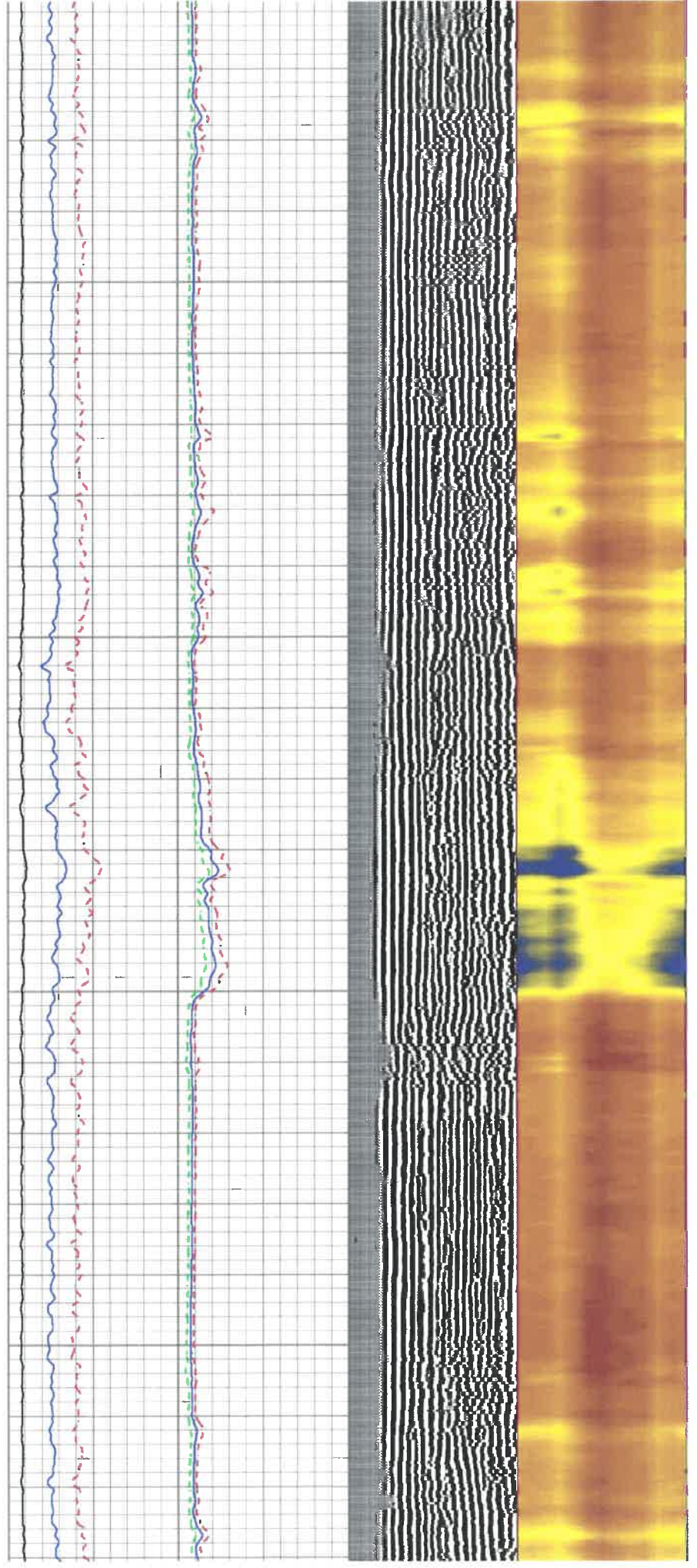
1600

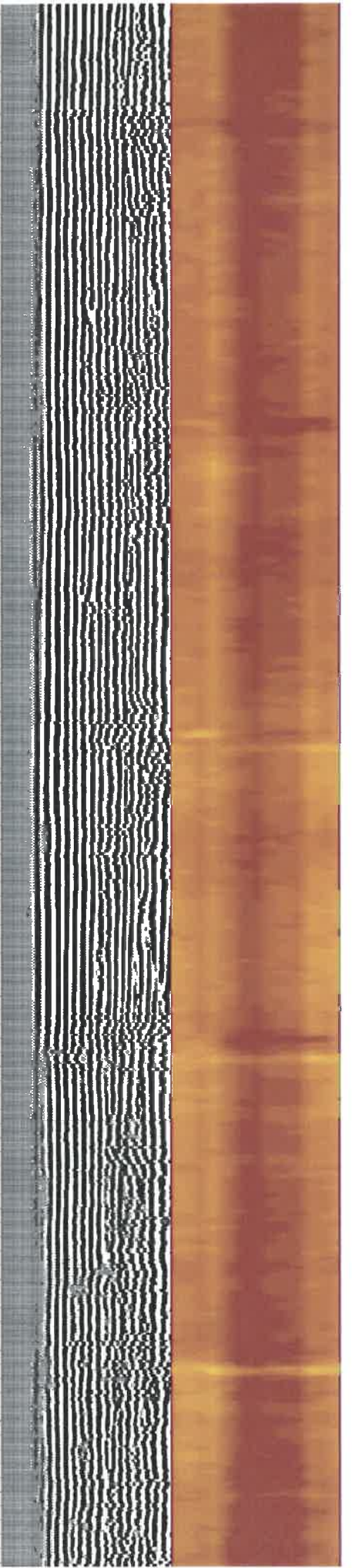
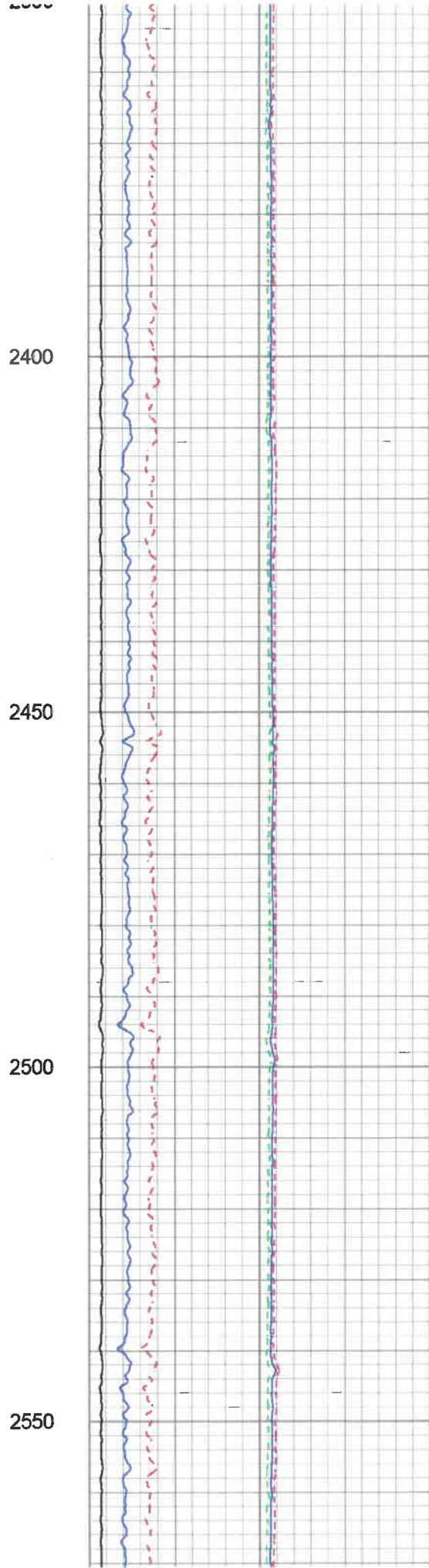
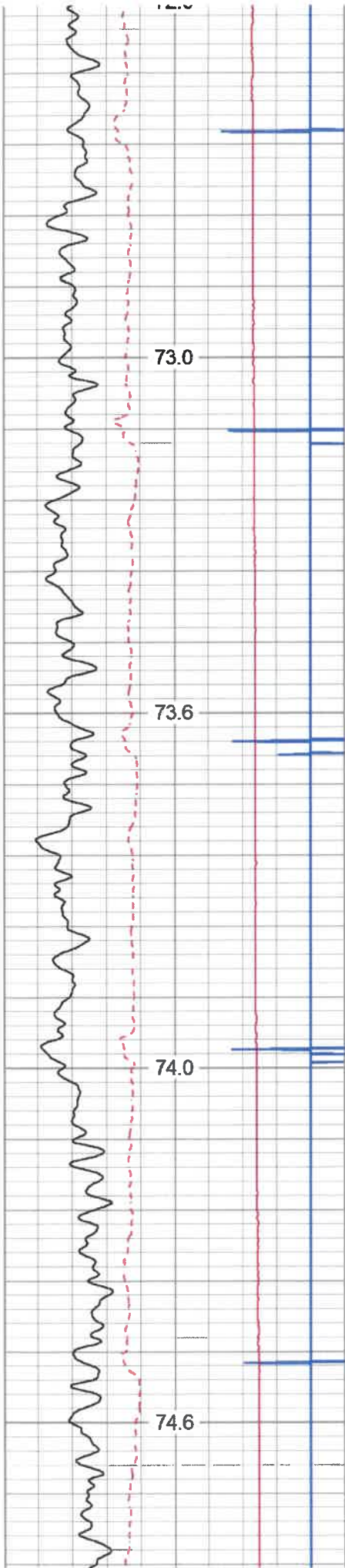
1650

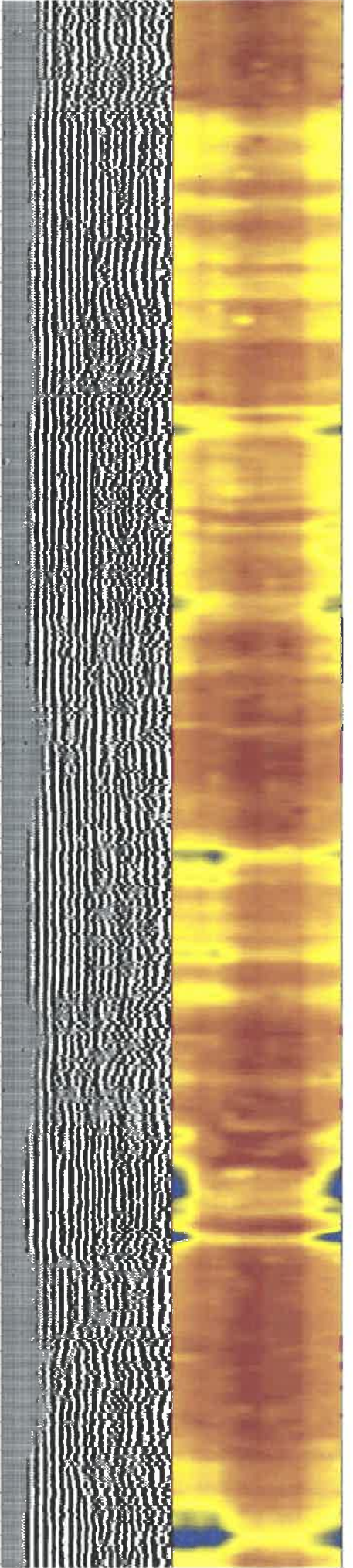
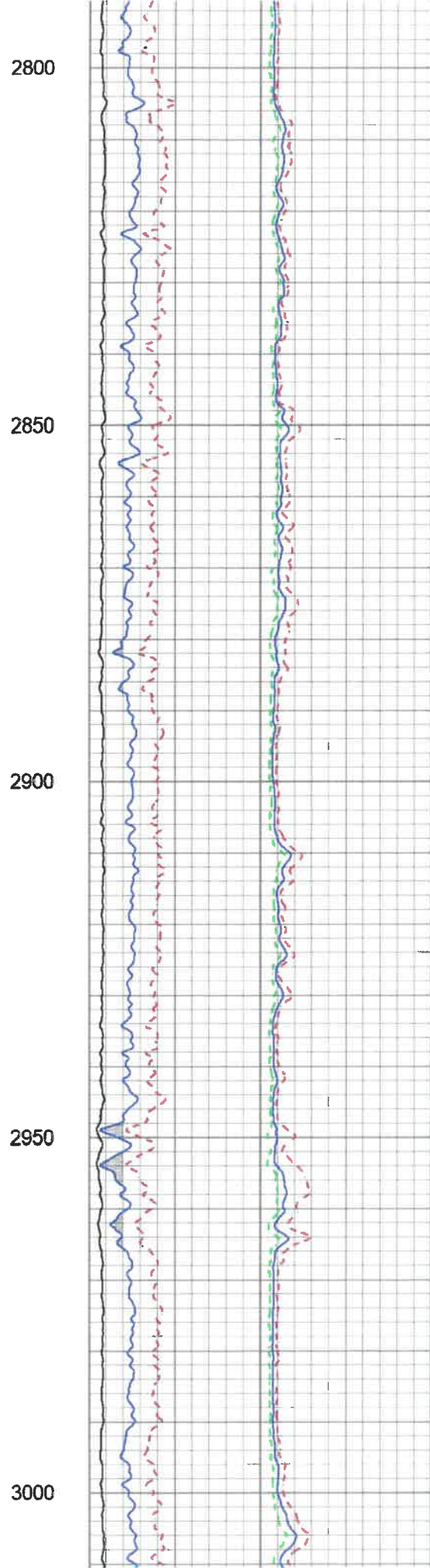
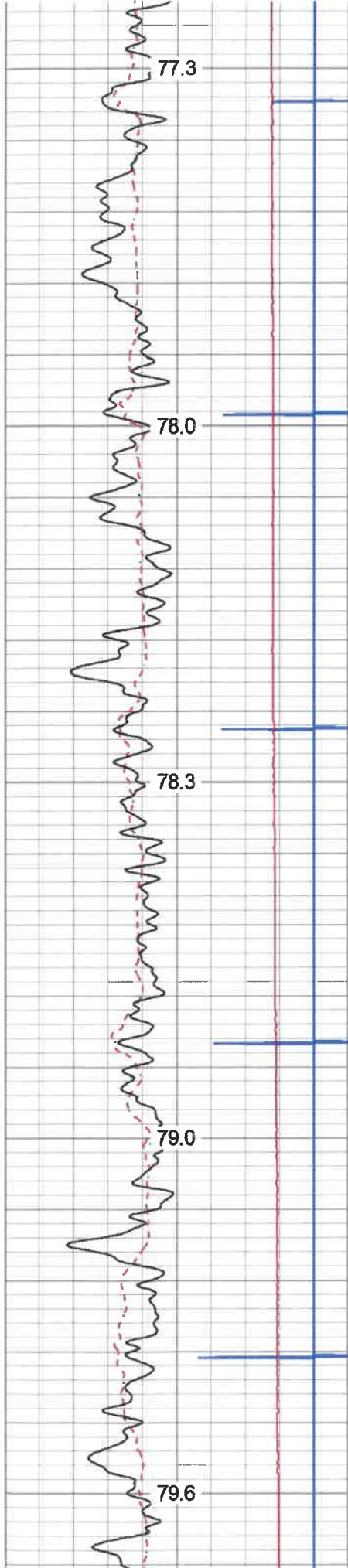


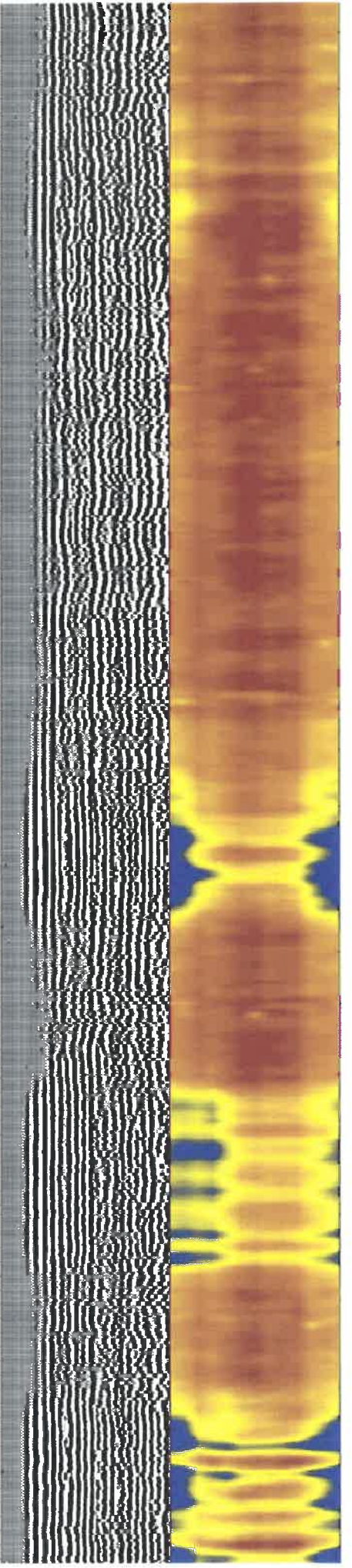
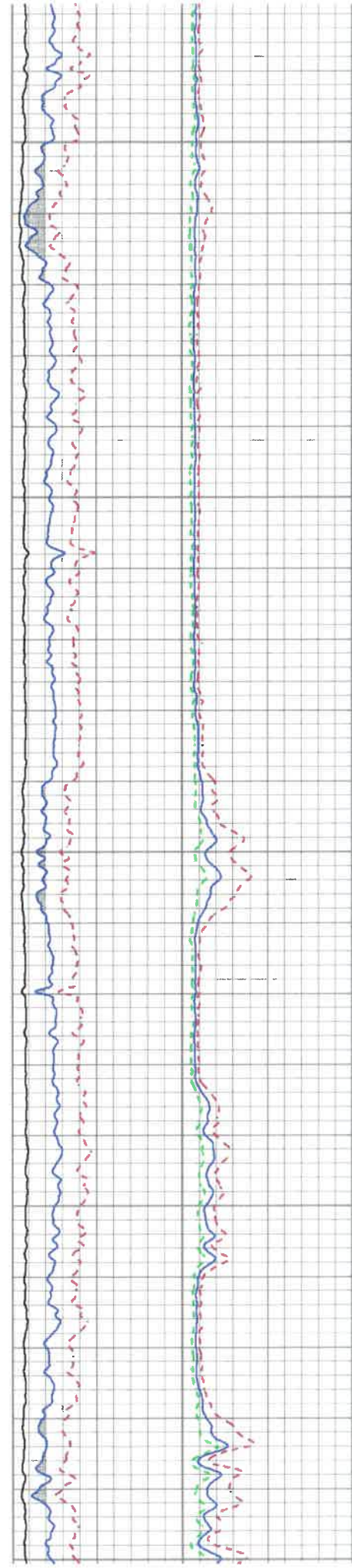
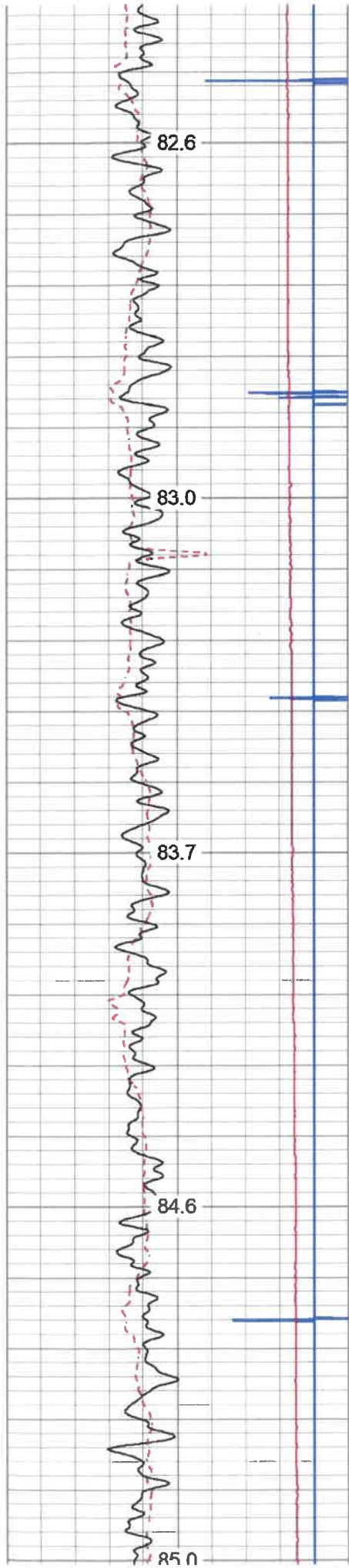


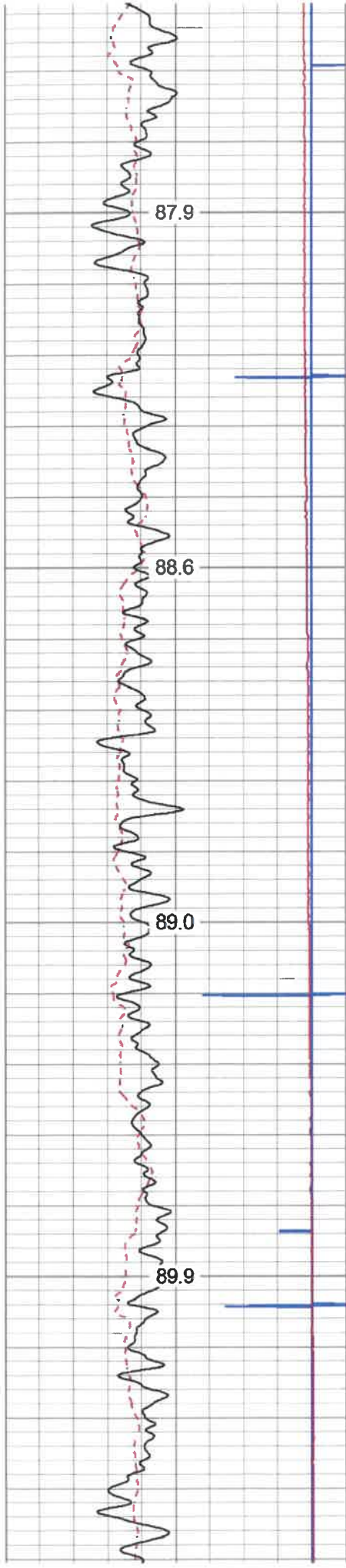
1950
2000
2050
2100



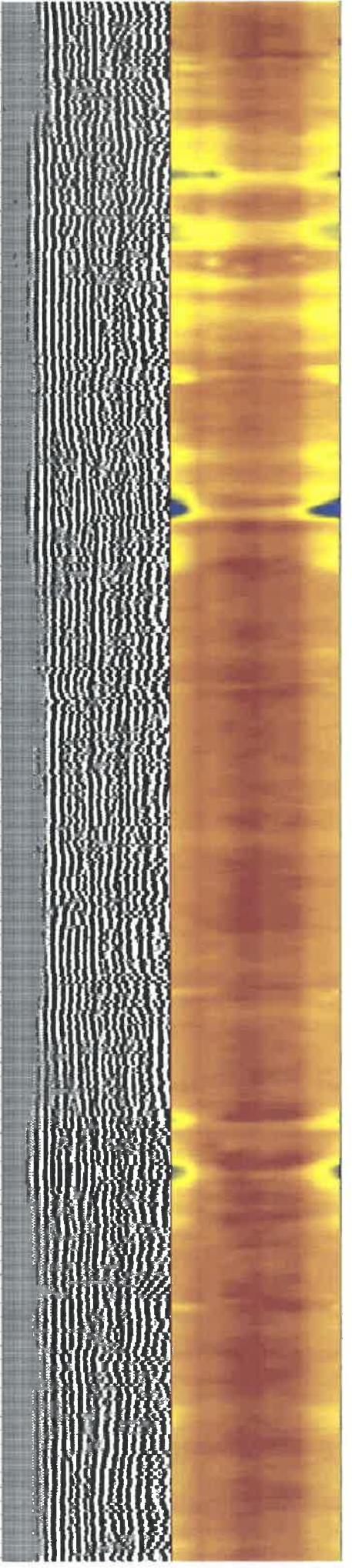
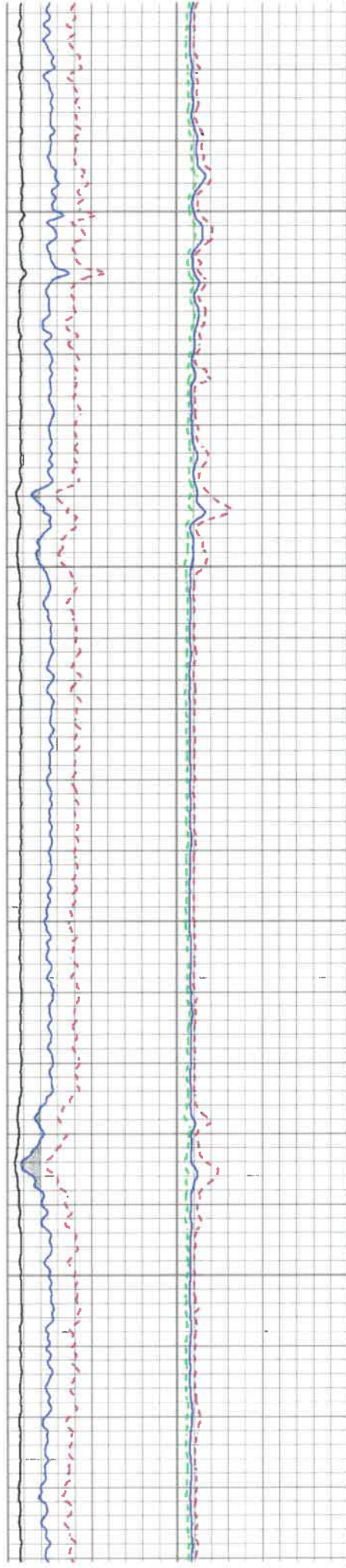


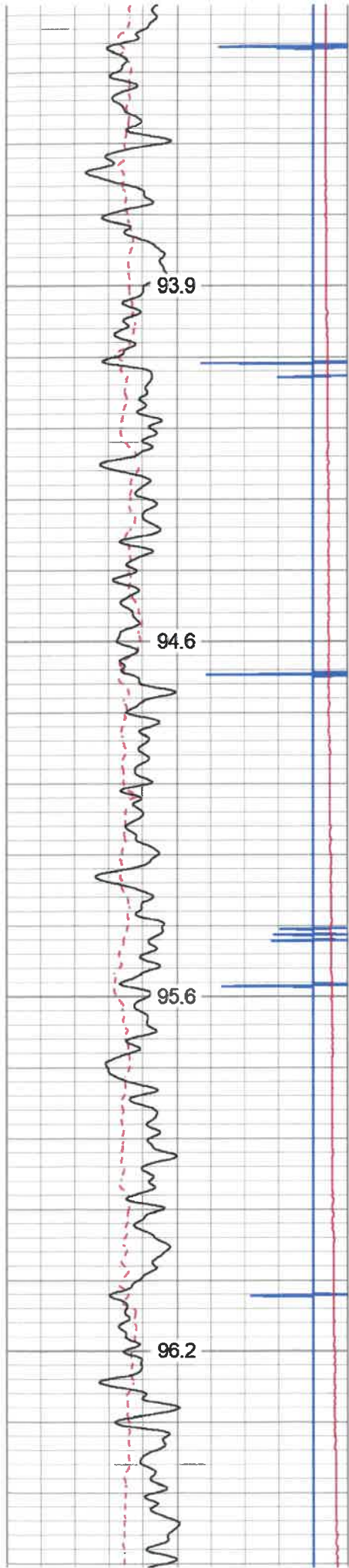






3700
3750
3800
3850



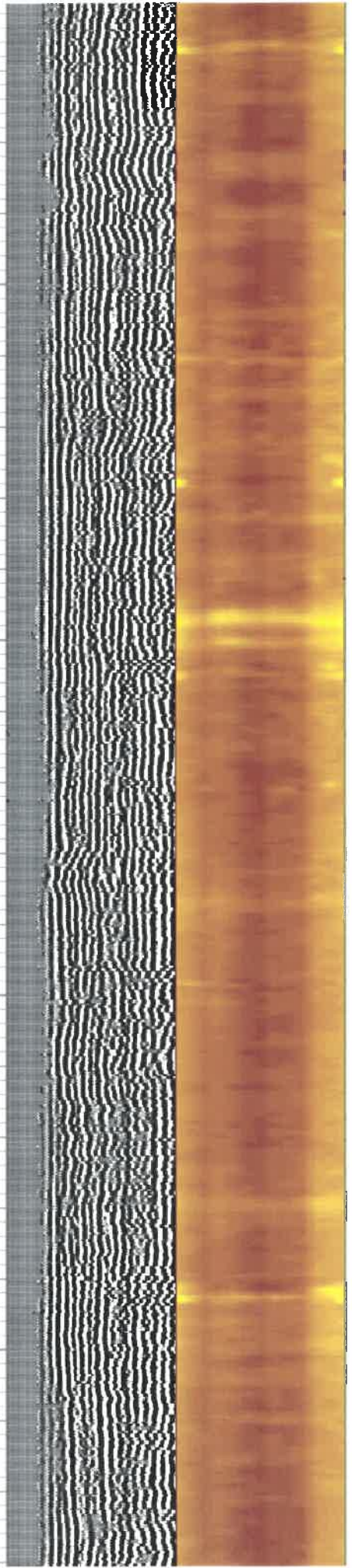
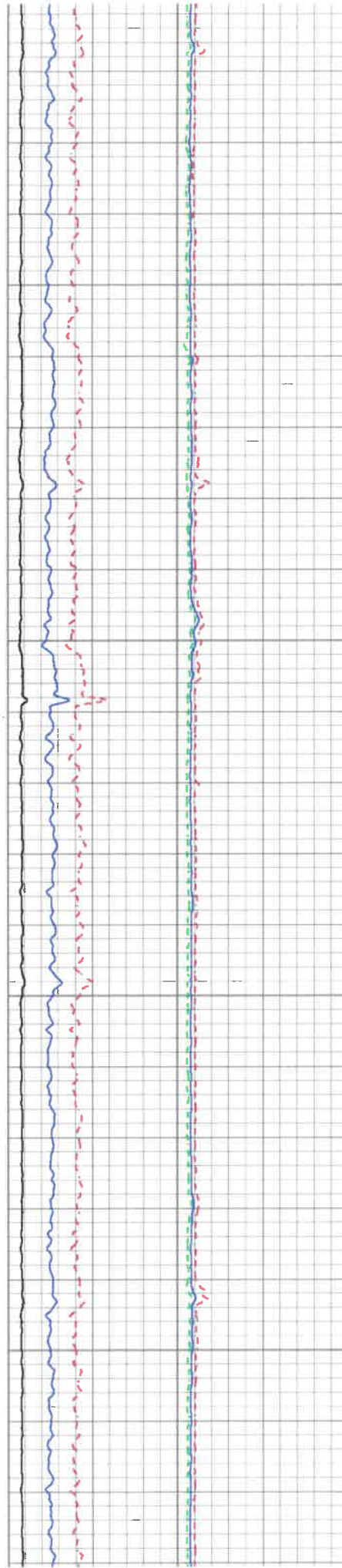


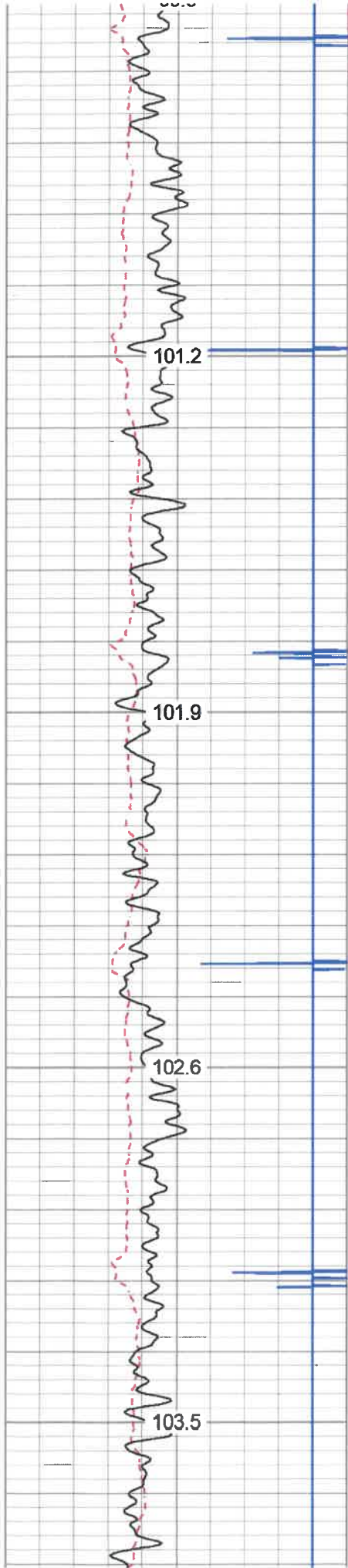
4150

4200

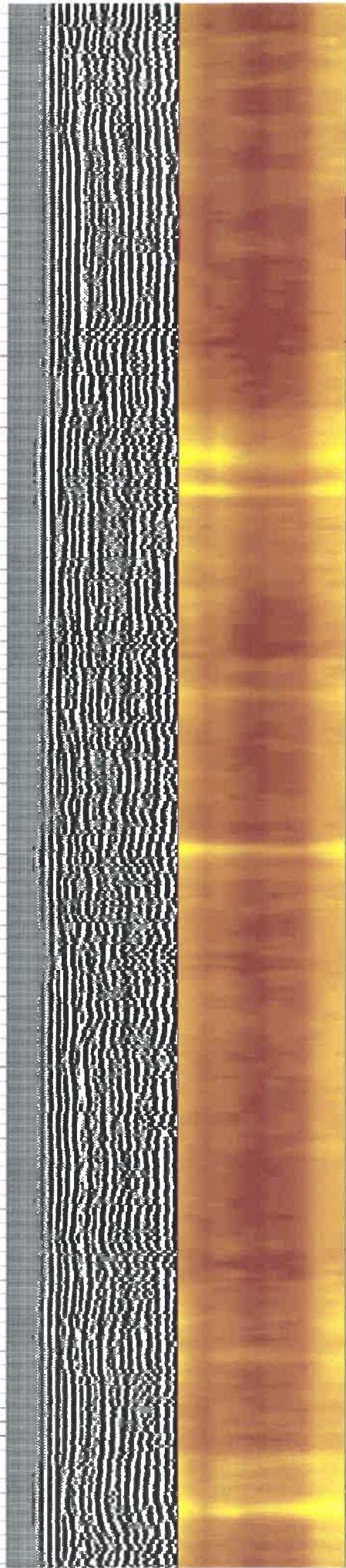
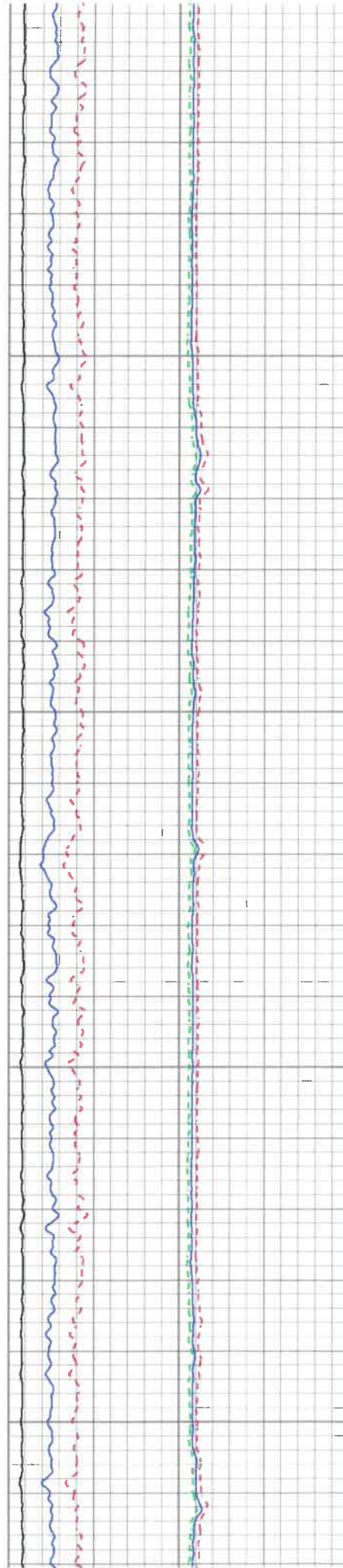
4250

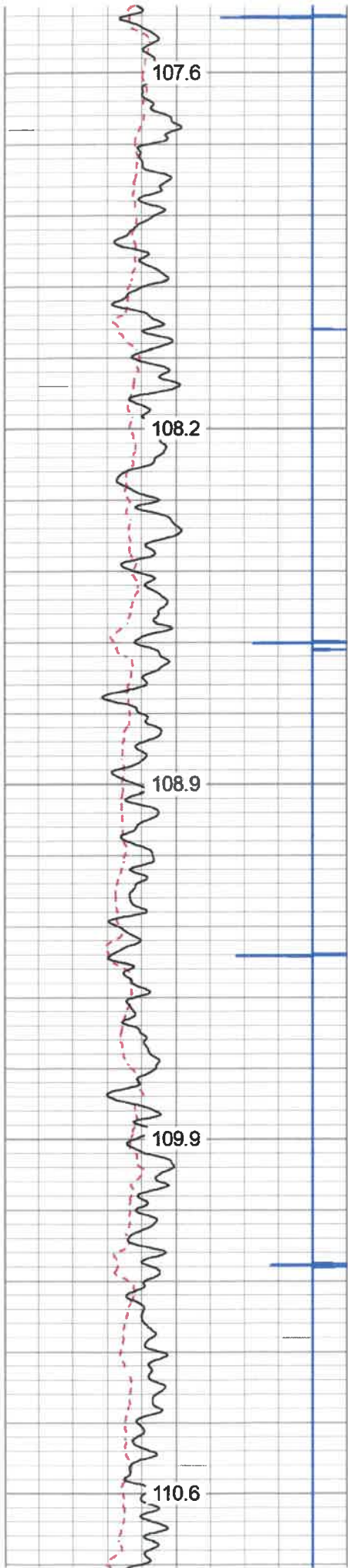
4300



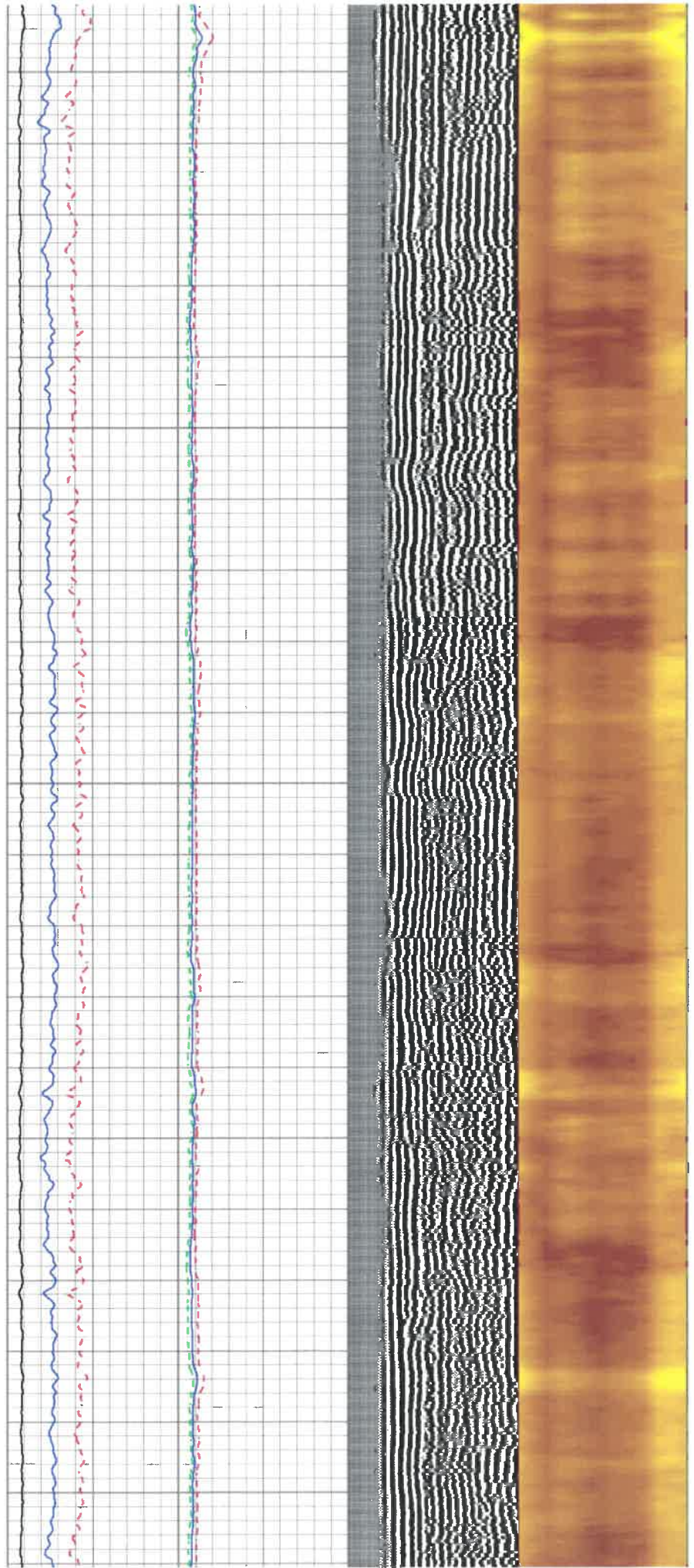


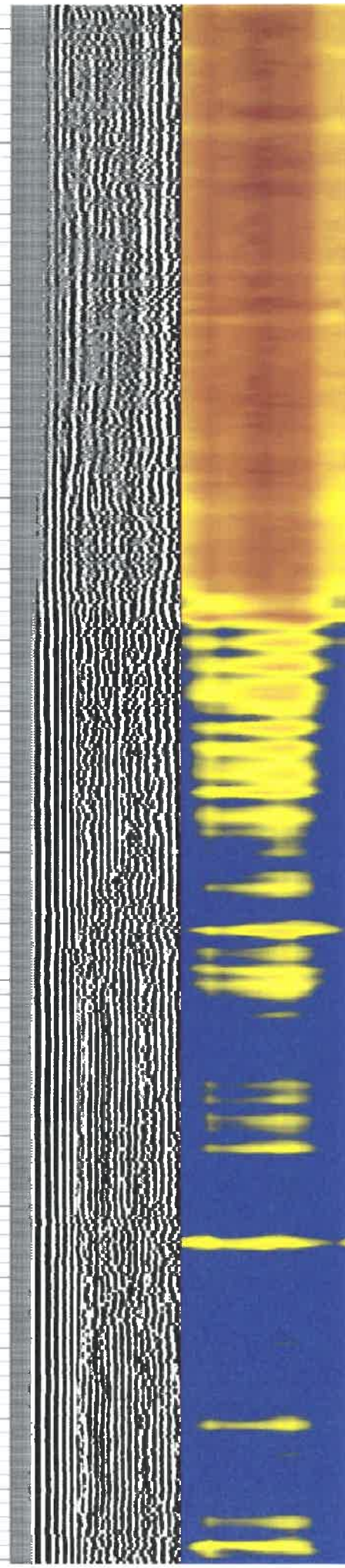
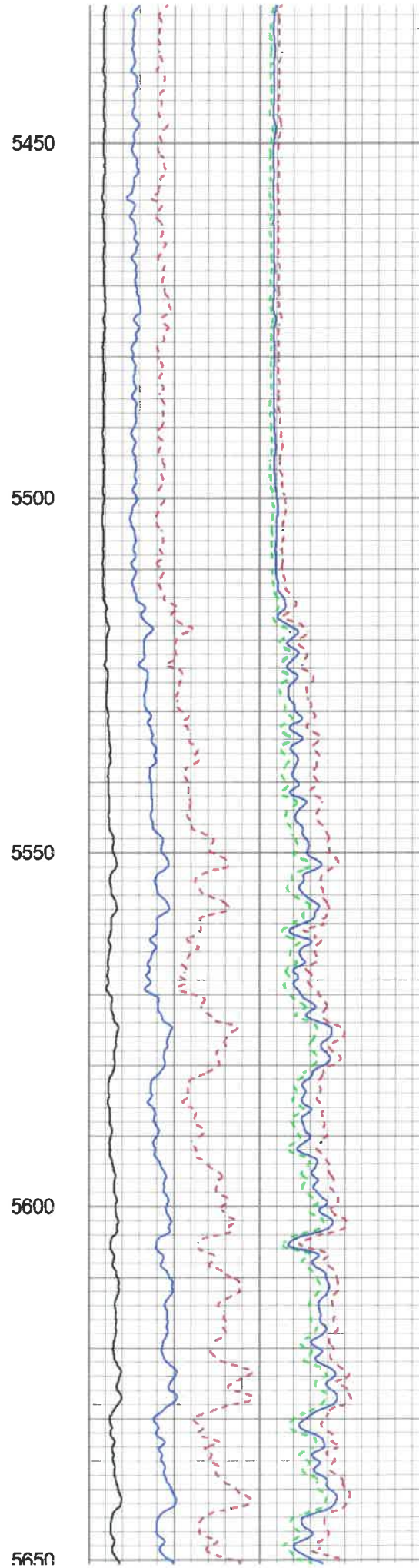
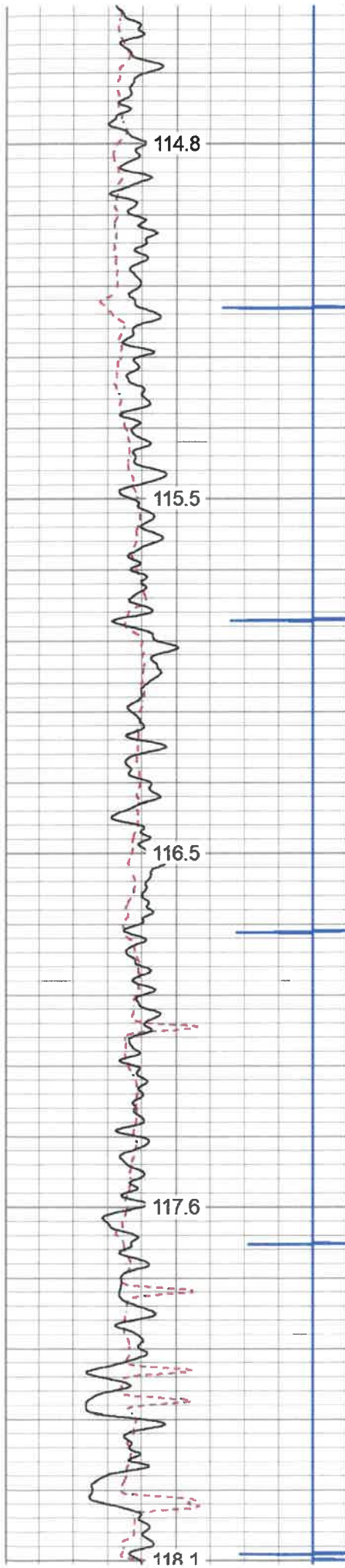
4600
4650
4700
4750

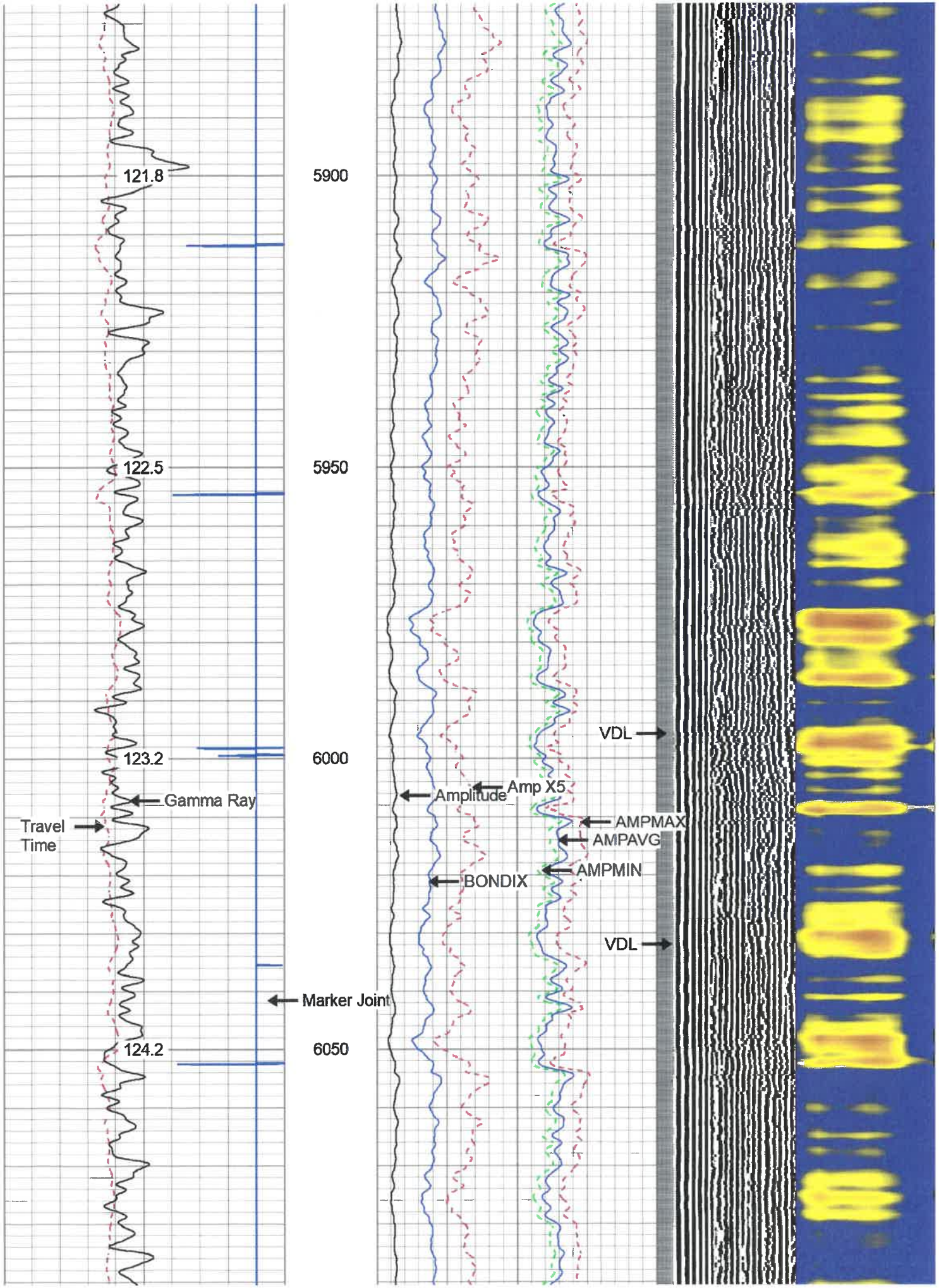


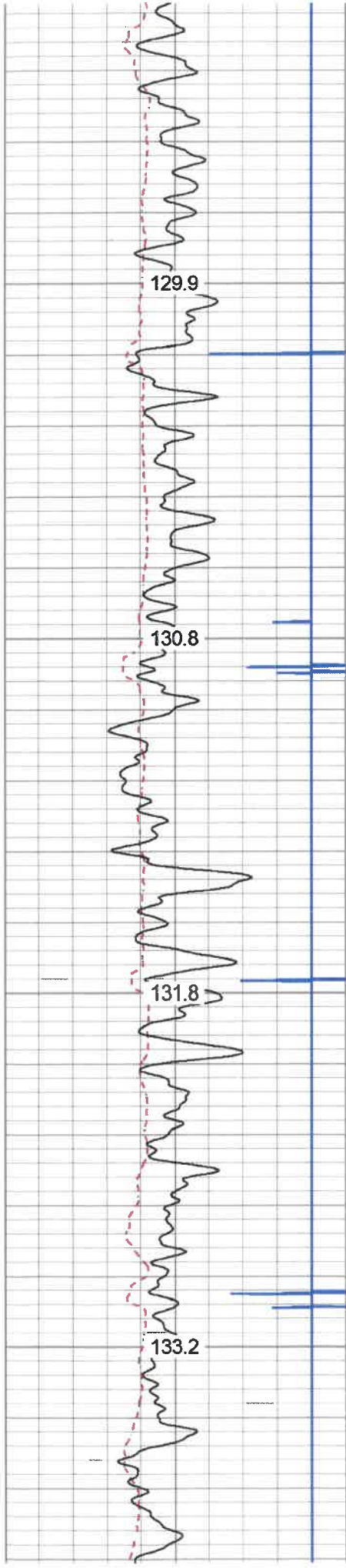


5000
5050
5100
5150
5200

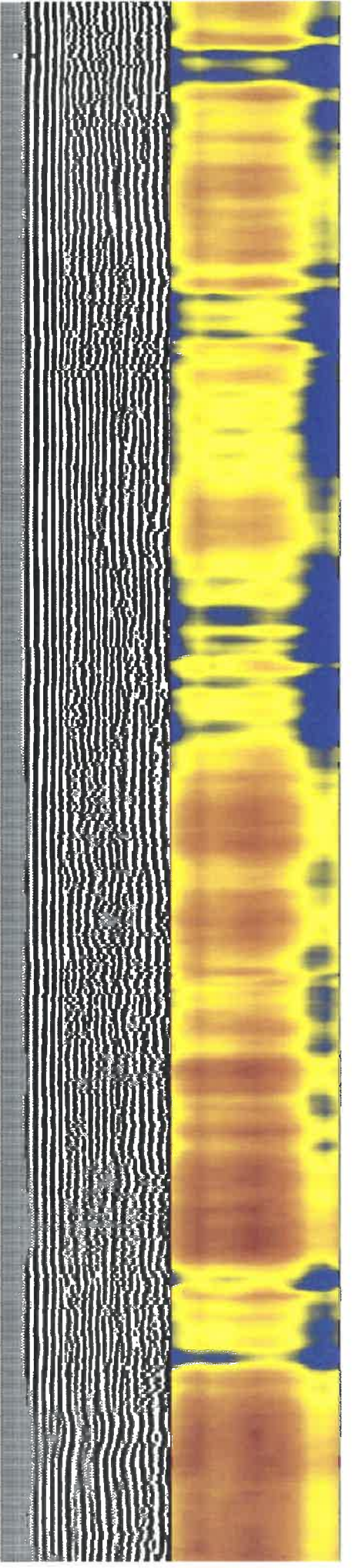
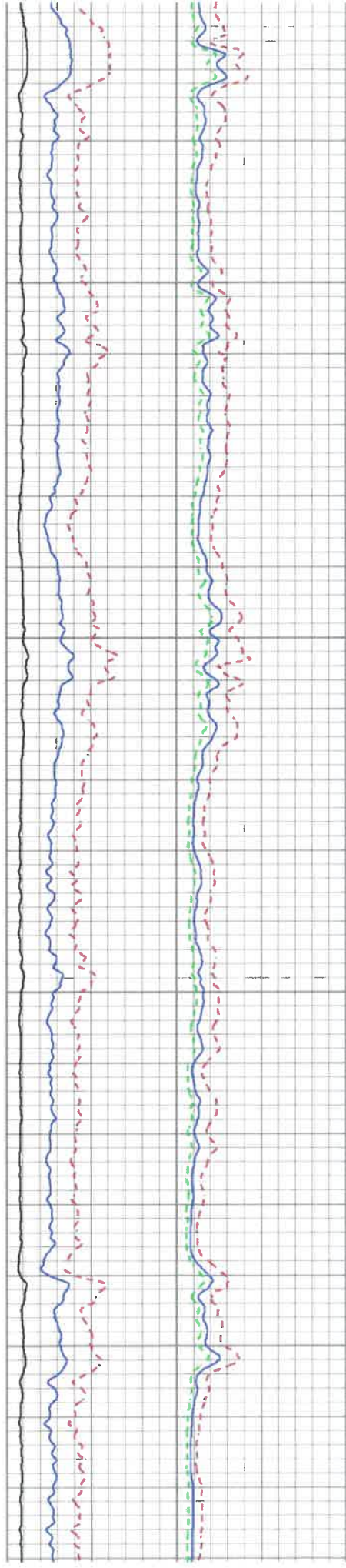


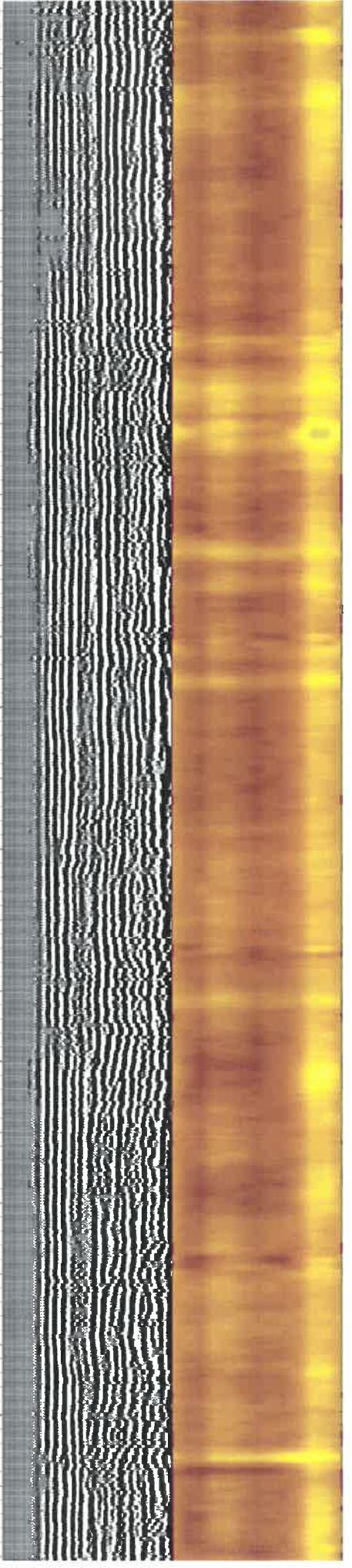
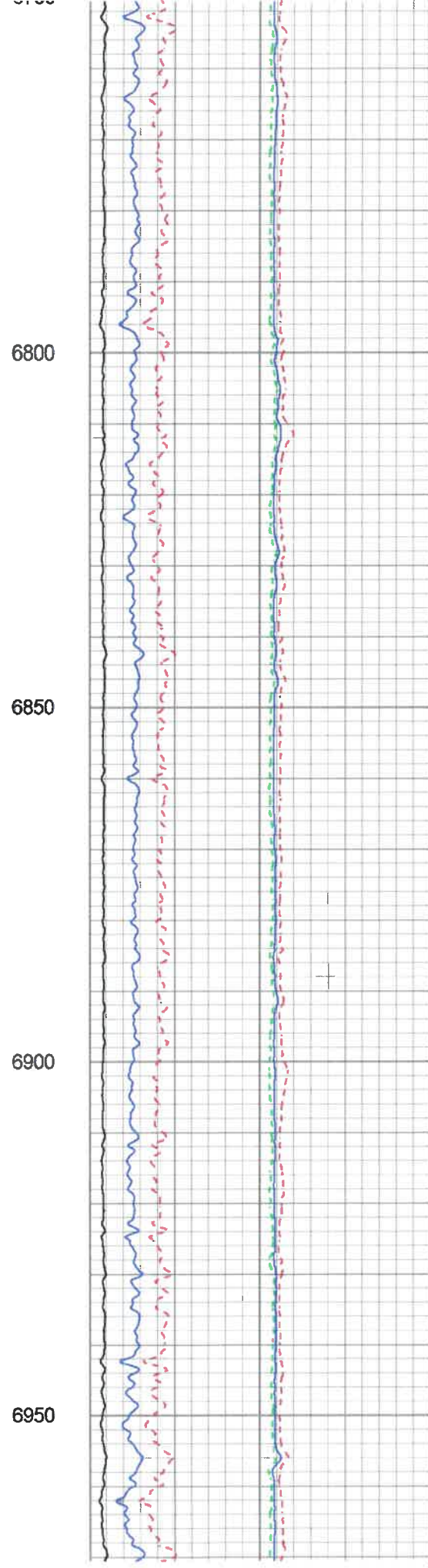
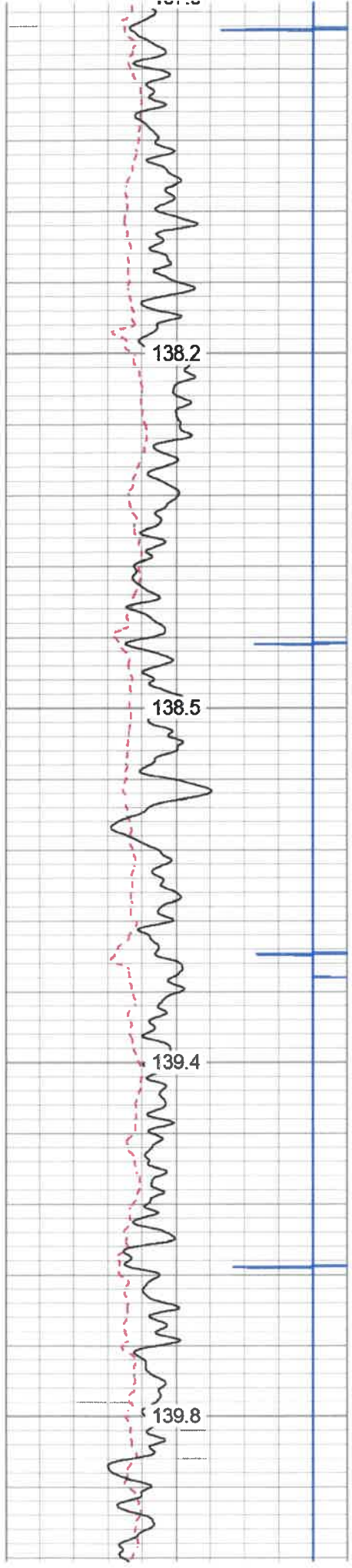






6350
6400
6450
6500

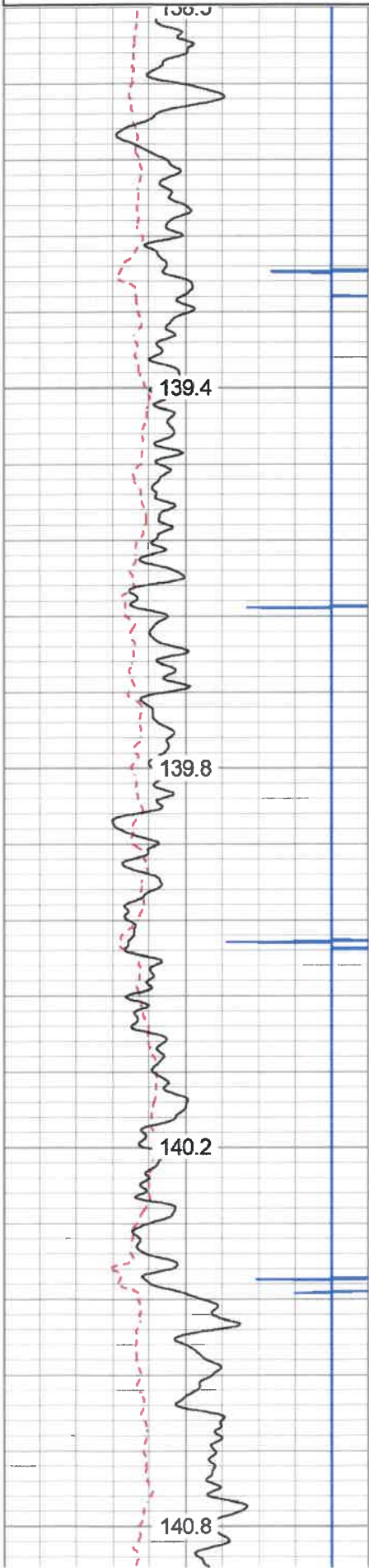




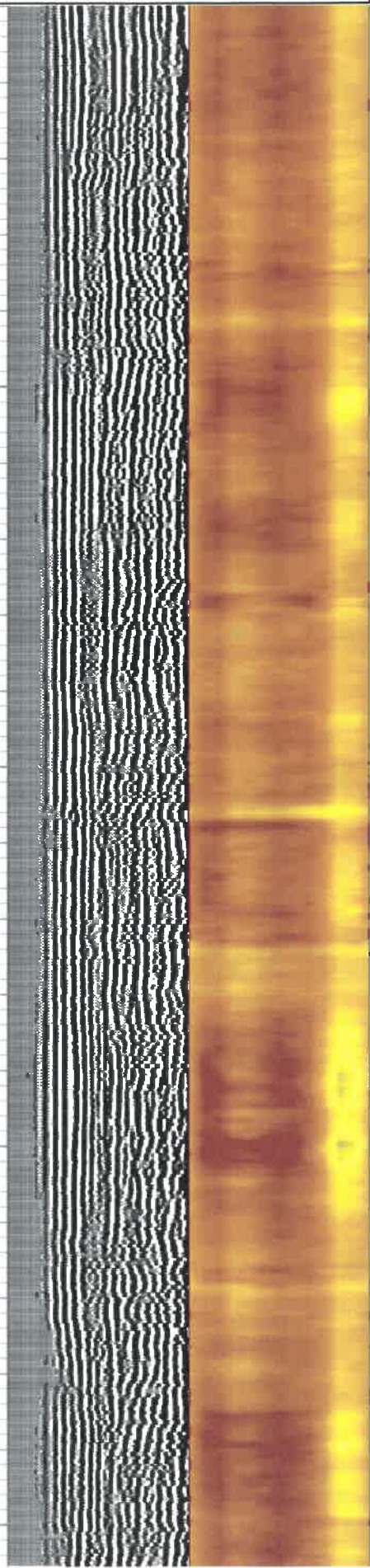
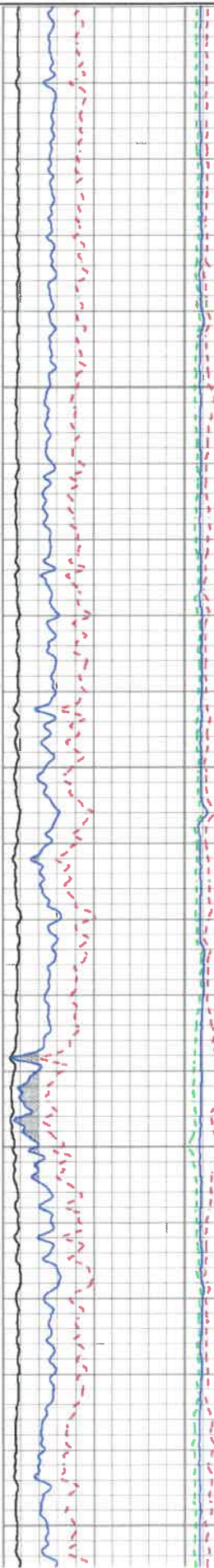
180 GR (GAPI) 360

1 BONDIX 0

TEMP
(degF)



6850
6900
6950
7000
7050



Calibration Report

Database File sterling1h.db
 Dataset Pathname pass3.8
 Dataset Creation Mon May 13 14:17:38 2019

Gamma Ray Calibration Report

Serial Number: 0111
 Tool Model: Tek-Co 2 3/4
 Performed: Thu May 02 12:24:19 2019

Calibrator Value: 1.0 GAPI

Background Reading: 0.0 cps
 Calibrator Reading: 1.0 cps

Sensitivity: 0.5000 GAPI/cps

Segmented Cement Bond Log Calibration Report

Serial Number: T12_01
 Tool Model: Tek12

Calibration Casing Diameter: 5.500 in
 Calibration Depth: 133.325 ft

Master Calibration, performed (Derived):

	Raw (v)		Calibrated (mv)		Results	
	Zero	Cal	Zero	Cal	Gain	Offset
3'	-0.009	0.575	3.500	71.921	117.181	4.505
CAL	0.000	0.567				
5'	-0.051	0.486	3.500	71.921	127.232	10.026
SUM						
S1	0.000	0.794	0.000	100.000	125.978	-0.002
S2	0.000	0.897	0.000	100.000	111.430	-0.001
S3	0.000	0.965	0.000	100.000	103.680	-0.001
S4	0.000	0.817	0.000	100.000	122.349	-0.001
S5	0.000	0.866	0.000	100.000	115.492	-0.001
S6	0.000	0.982	0.000	100.000	101.867	-0.001
S7	0.000	1.042	0.000	100.000	95.980	-0.001
S8	-0.015	1.038	0.000	100.000	94.997	1.410
S9	-0.006	0.908	0.000	100.000	109.391	0.698
S10	-0.005	0.887	0.000	100.000	112.143	0.584
S11	-0.015	0.778	0.000	100.000	126.030	1.940
S12	0.000	0.759	0.000	100.000	131.822	-0.004

Temperature Calibration Report

Serial Number: T12_01
 Tool Model: Tek12
 Performed: Fri Oct 22 17:21:06 2010

 Reference Reading

Low Reference: 0.00 degF 0.00 usec
 High Reference: 1.00 degF 1.00 usec

Gain: 0.33
 Offset: 0.00
 Delta Spacing 2