



**RADIAL CEMENT BOND LOG
GAMMA RAY / CCL/VDL**

Company ANTERO RESOURCES CORPORATION
Well SARAHLENE 2H
Field TYLER
County TYLER
State W.V.

Company ANTERO RESOURCES CORPORATION
Well SARAHLENE 2H
Field TYLER
County TYLER State W.V.

Location: API #: 47-095-02519-0000
AFEX# A06370
SEC TWP RGE
Permanent Datum G.L. Elevation 827'
Log Measured From K.B. OF 30'
Drilling Measured From K.B.
Other Services
Elevation
K.B. 1084'
D.F. 1084'
G.L. 1114'

Date	5/8/19
Run Number	ONE
Depth Driller	15804'
Depth Logger	6734'
Bottom Logged Interval	6734'
Top Log Interval	SURFACE
Open Hole Size	8.5"
Type Fluid	WATER
Density / Viscosity	N/A
Max. Recorded Temp.	140 DEG
Estimated Cement Top	900'
Time Well Ready	N/A
Time Logger on Bottom	N/A
Equipment Number	624874
Location	BRIDGEPORT W.V.
Recorded By	P DAVIDSON
Witnessed By	JBURKS

Borehole Record		Casing Record					
Run Number	Bit	From	To	Size	Weight	From	To
				5.5"	23	15804'	SURFACE
				9.625"		2617'	SURFACE
				13.375"		824'	SURFACE

<<< Fold Here >>>

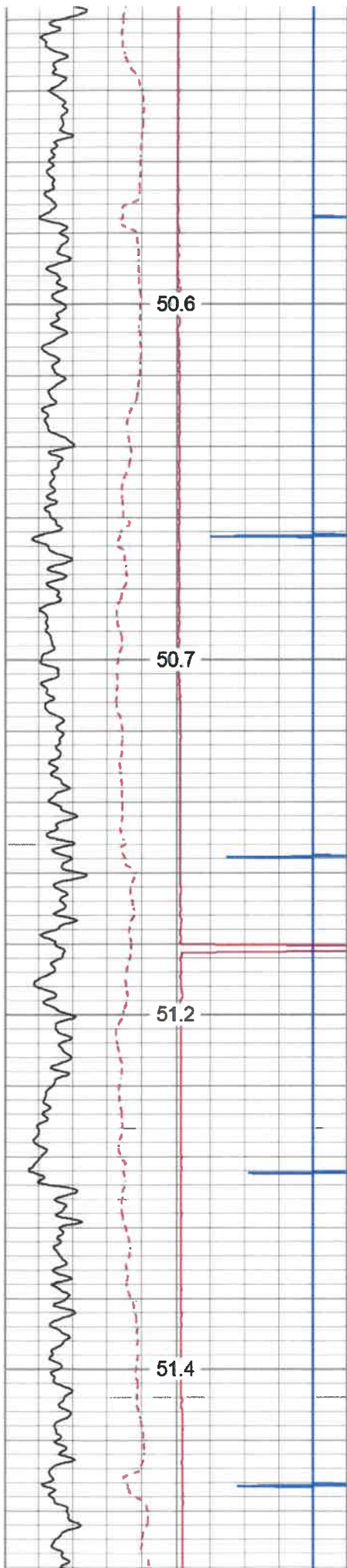
All interpretations are opinions based on inferences from electrical or other measurements and we cannot and do not guarantee the accuracy or correctness of any interpretation, and we shall not, except in the case of gross or willful negligence on our part, be liable or responsible for any loss, costs, damages, or expenses incurred or sustained by anyone resulting from any interpretation made by any of our officers, agents or employees. These interpretations are also subject to our general terms and conditions set out in our current Price Schedule.

Comments

THANK YOU FOR USING KLX ENERGY SERVICES
LOG WAS RAN ON 5.5 CASING WITH 1500PSI ON WELL
ZERO AT K.B. OF 30 FT
MARKER JOINT @ 5555' TO 5565'
LOG WAS SHIFTED DOWN HOLE 15'



MAIN PASS

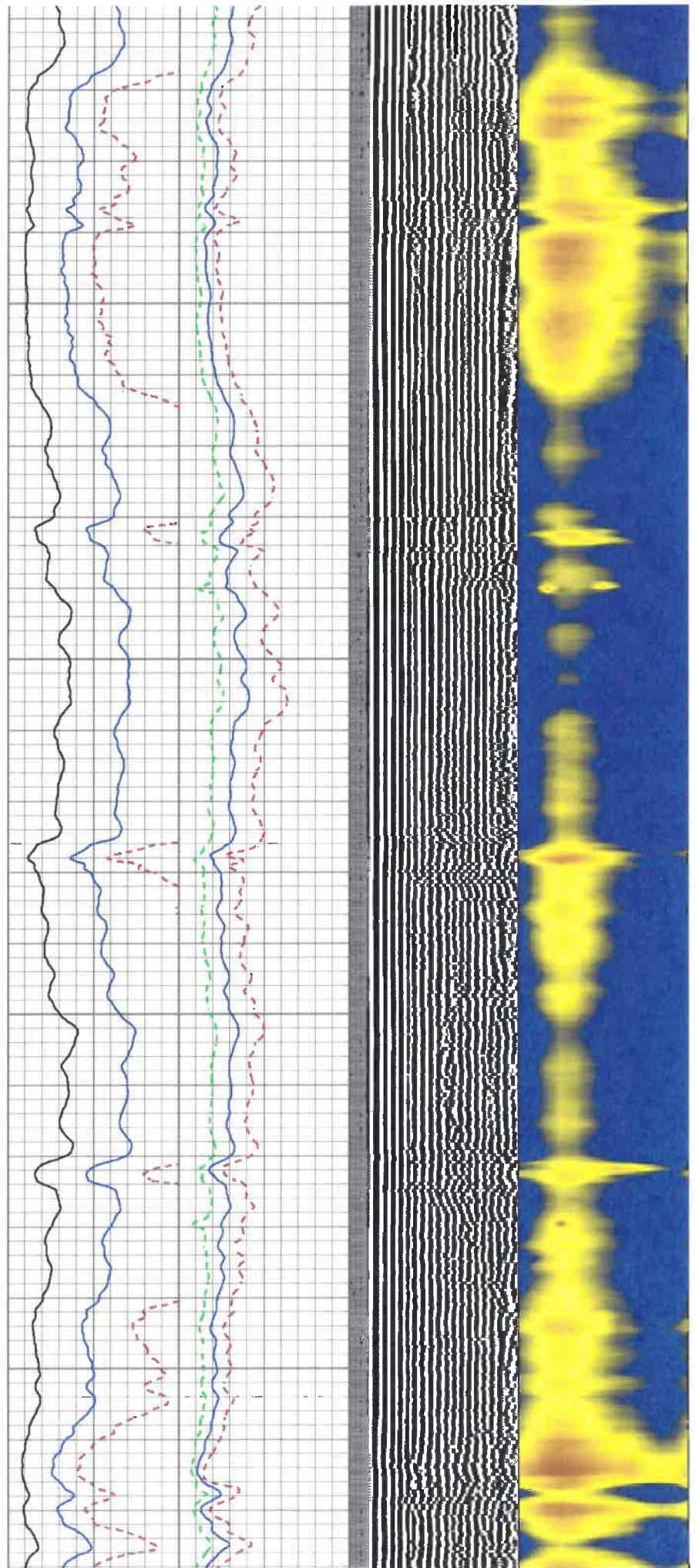


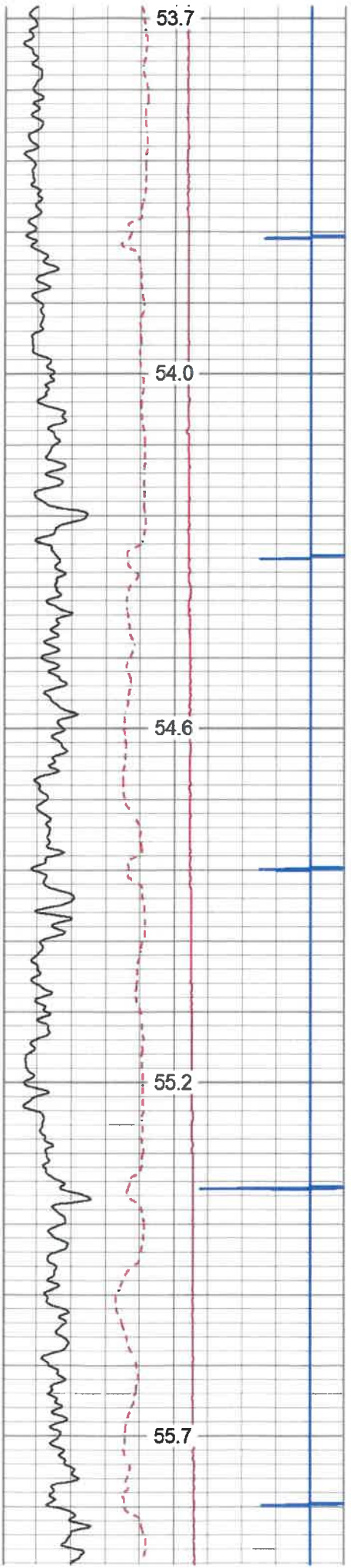
250

300

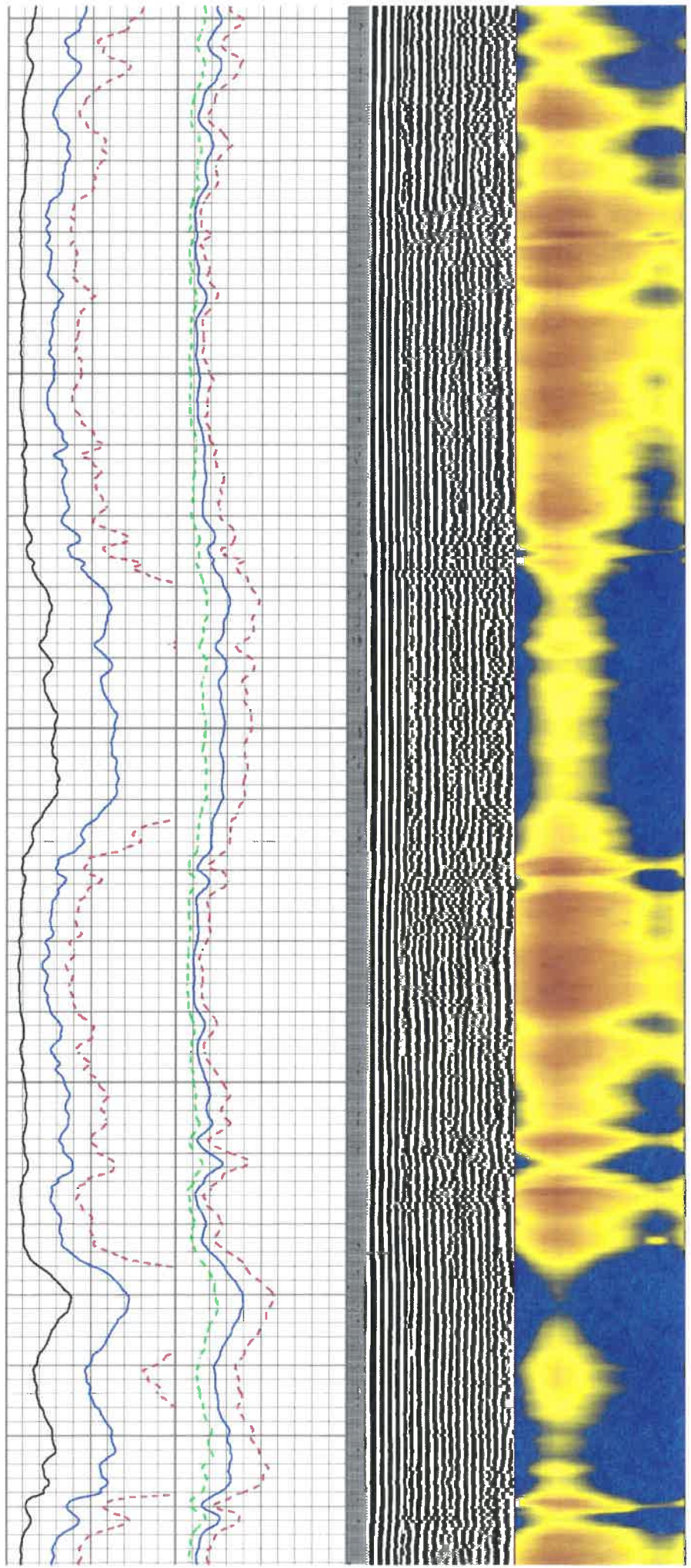
350

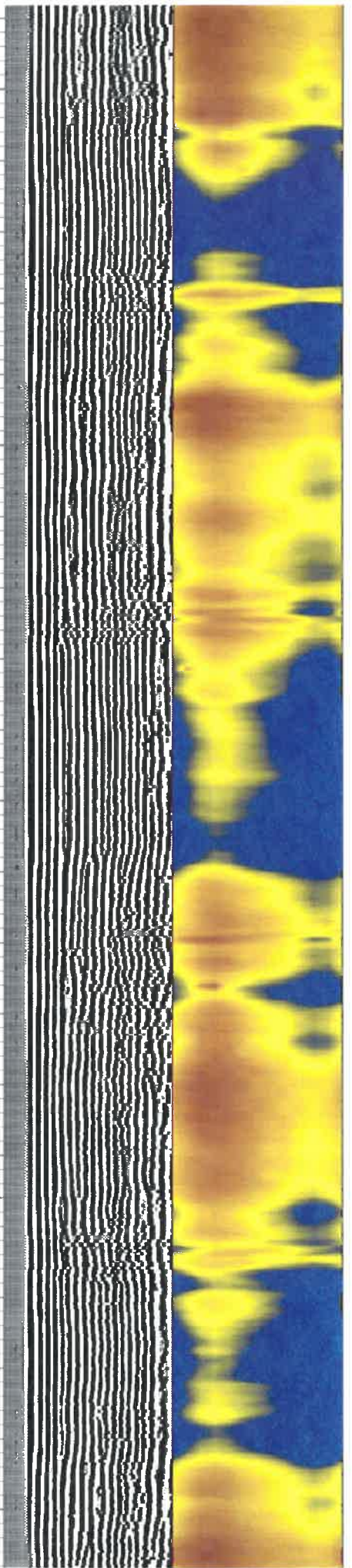
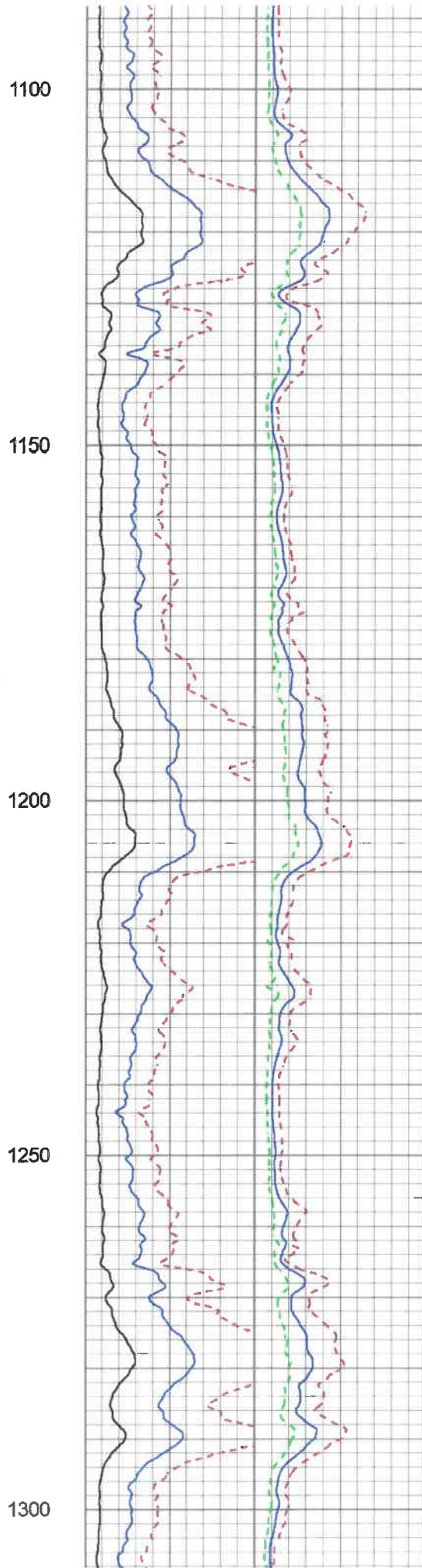
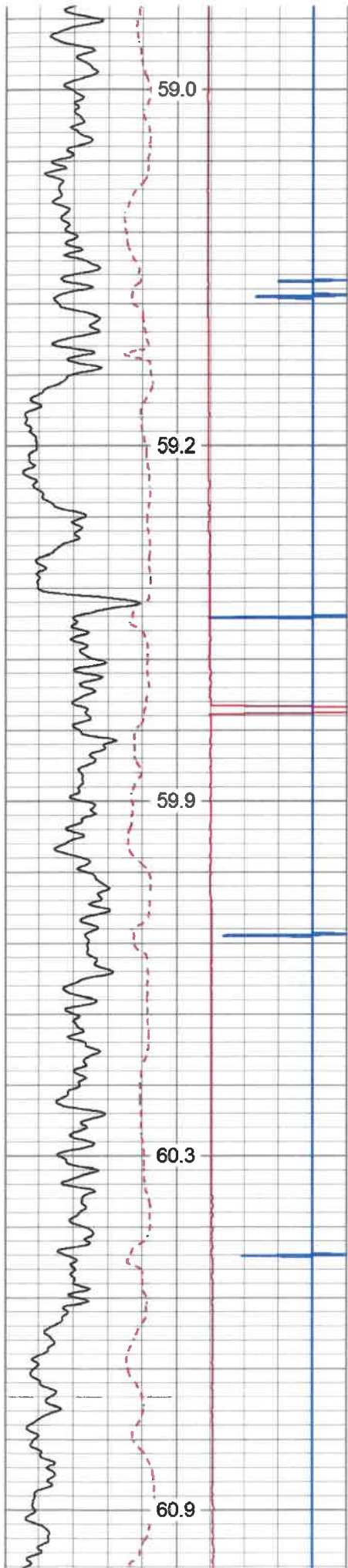
400

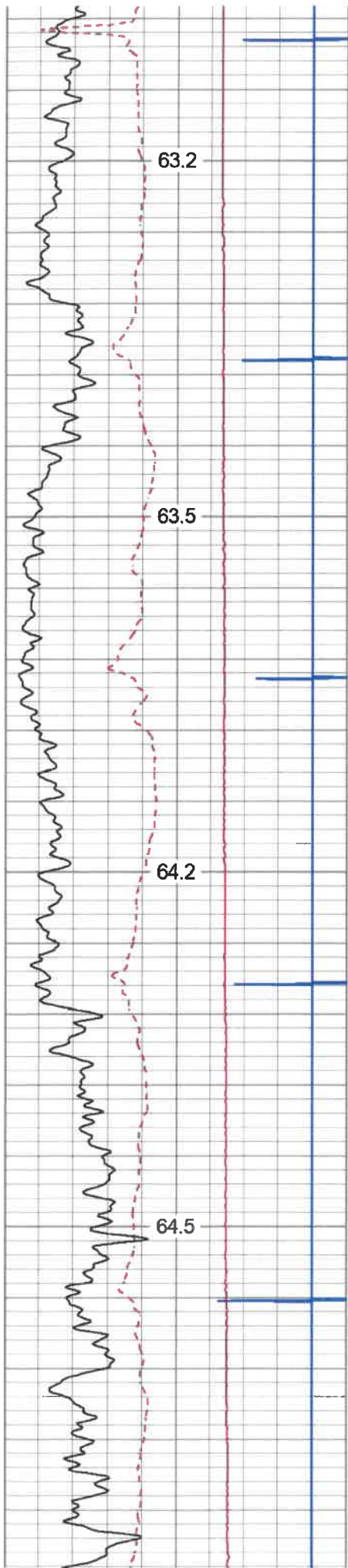




650
700
750
800
850





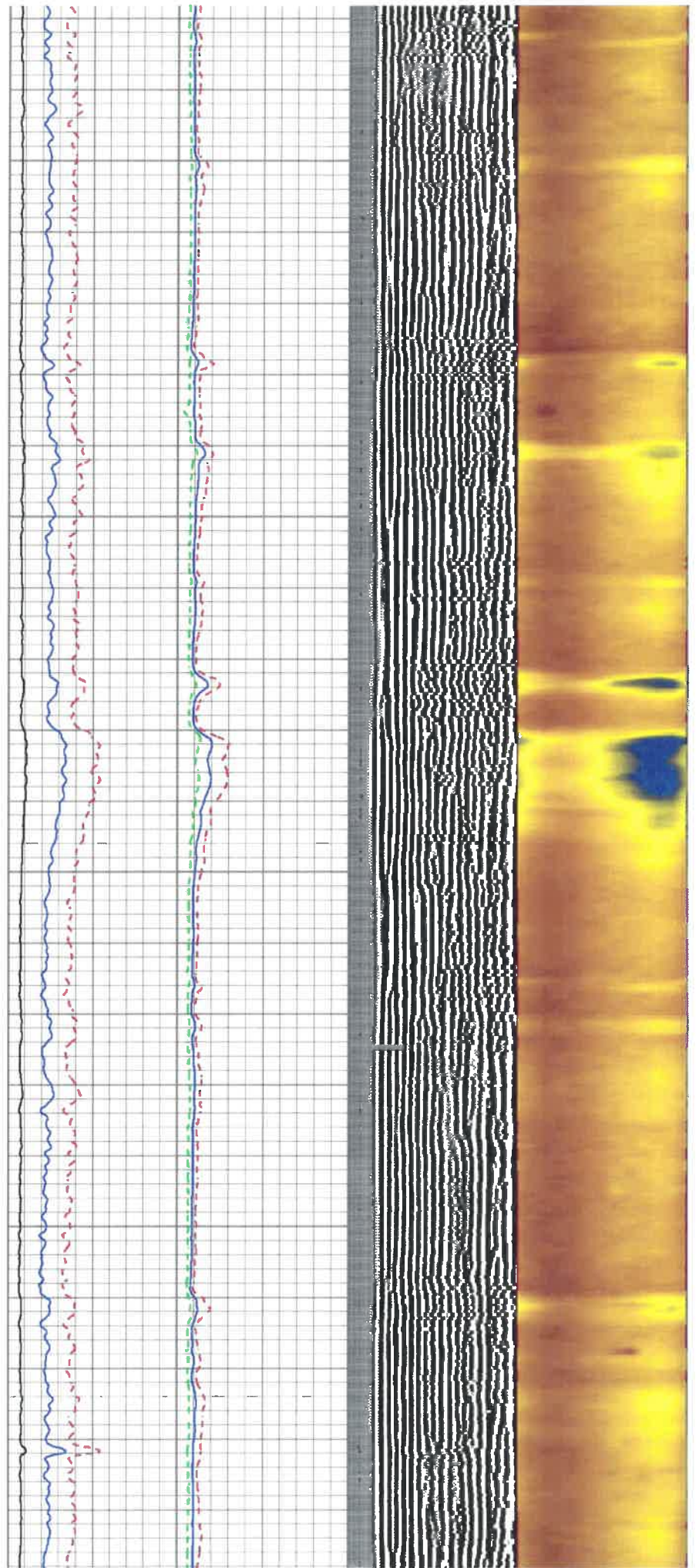


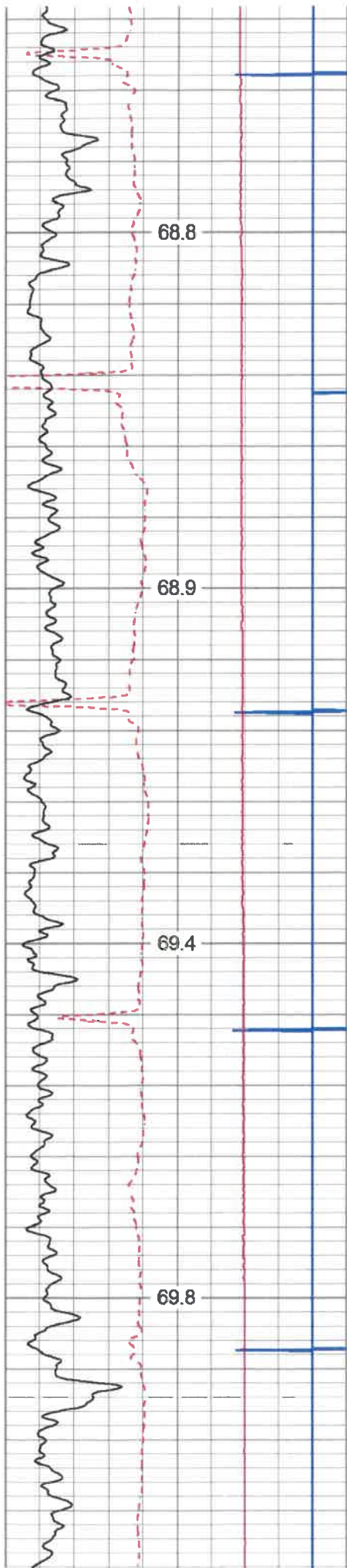
1550

1600

1650

1700



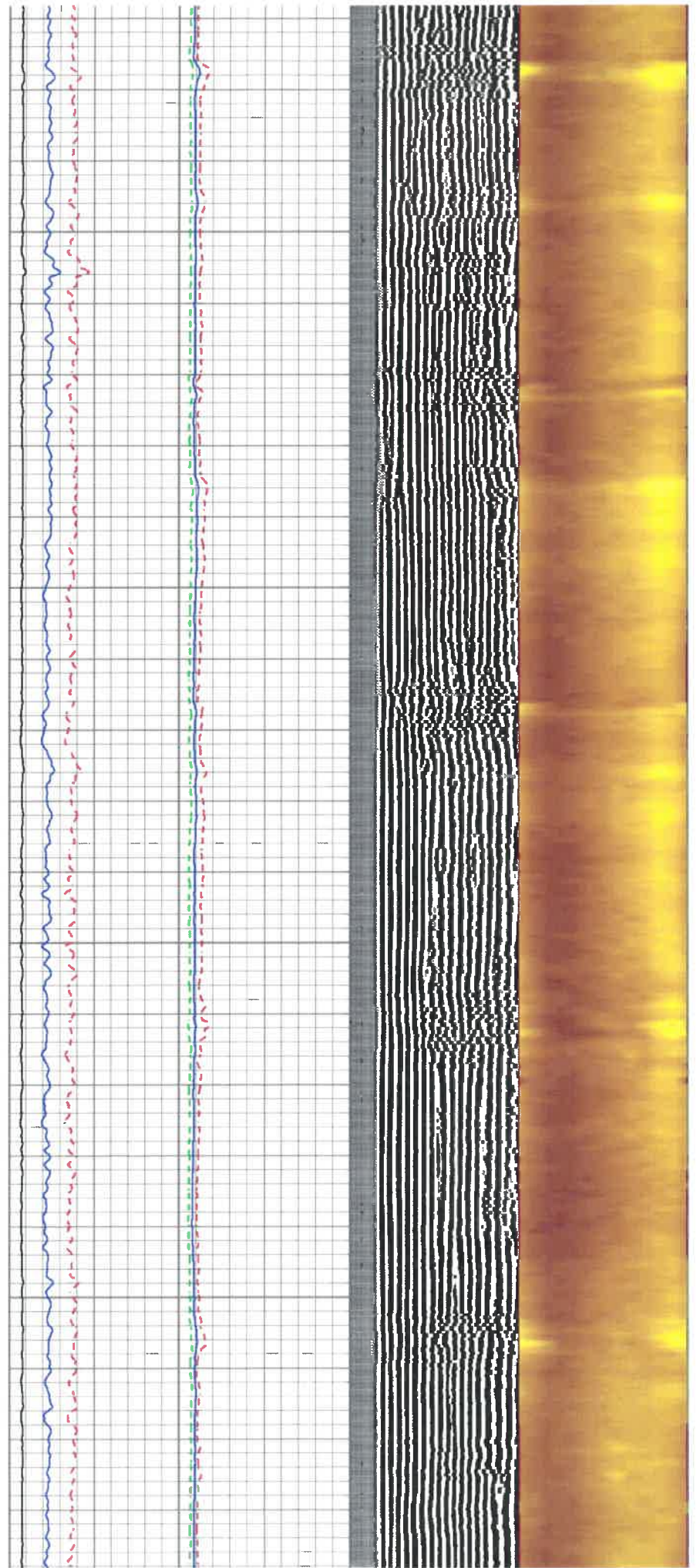


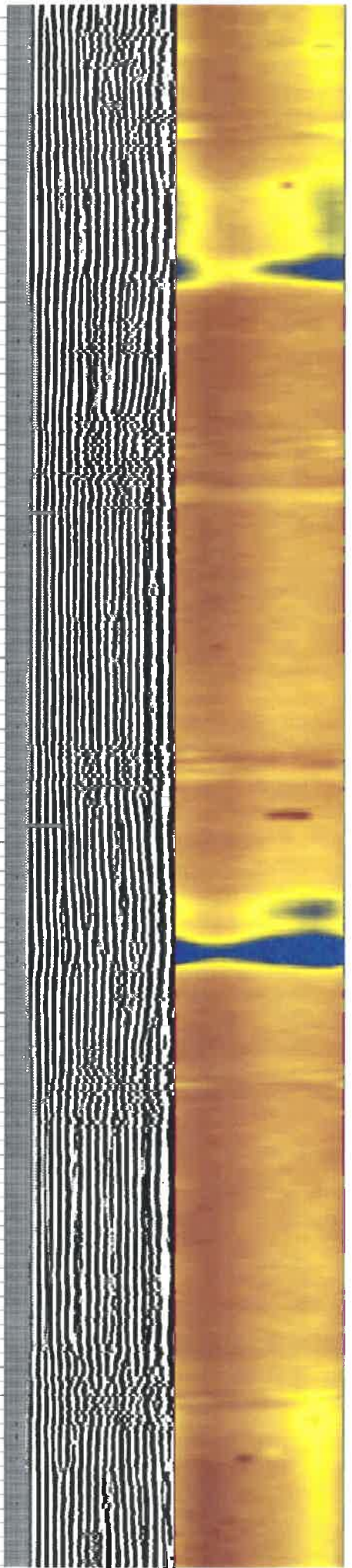
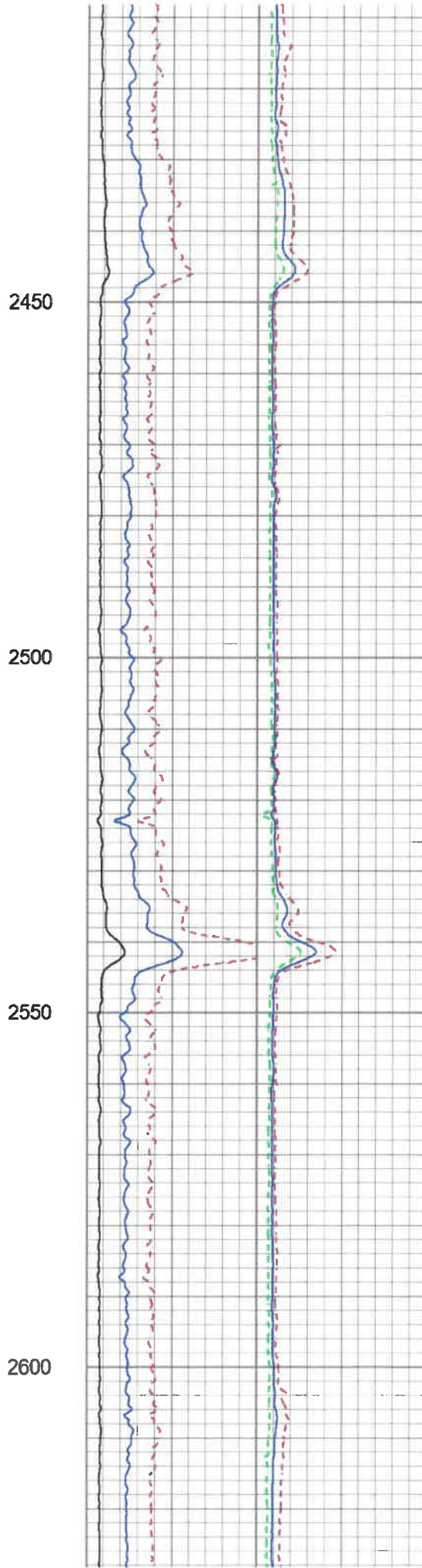
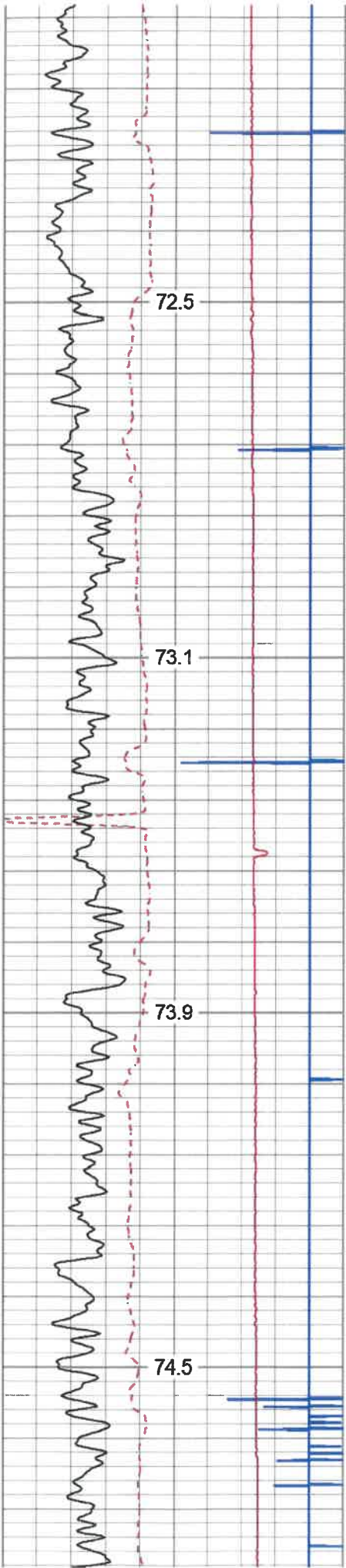
2000

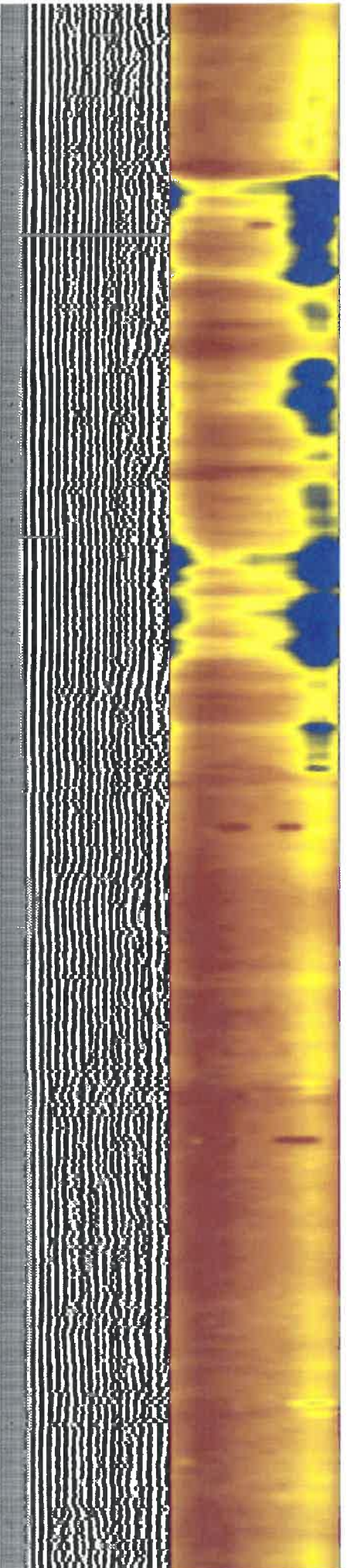
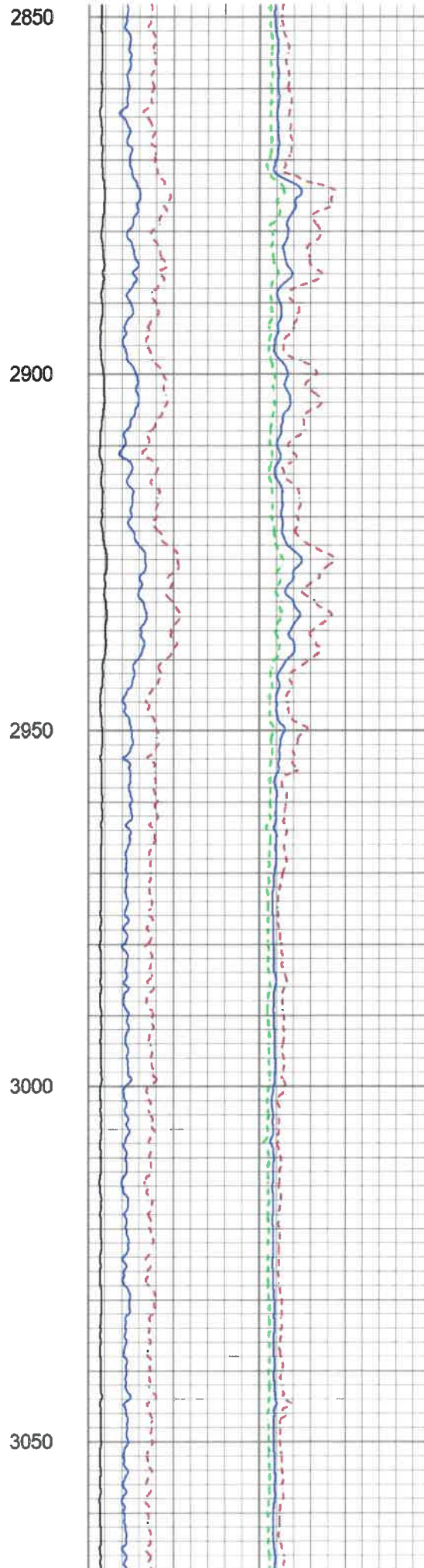
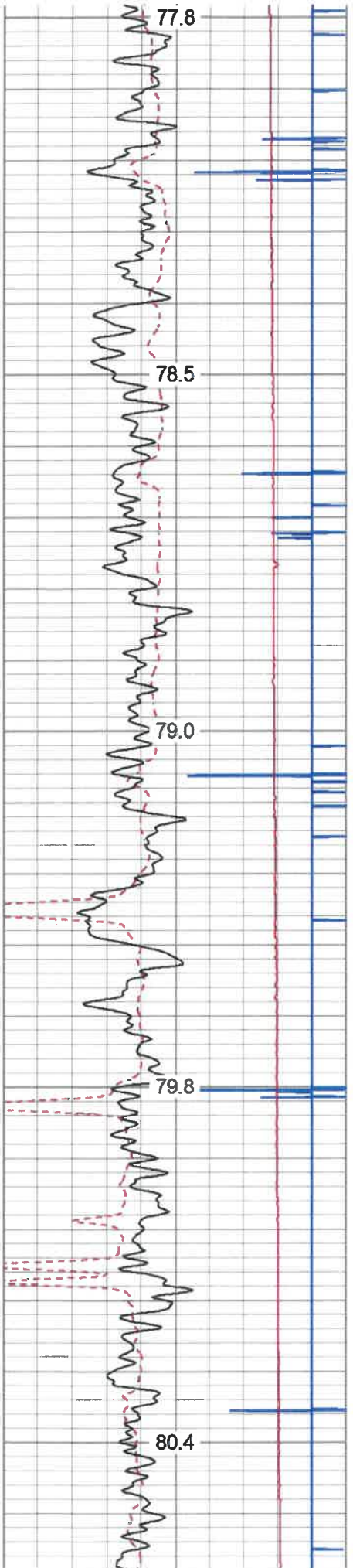
2050

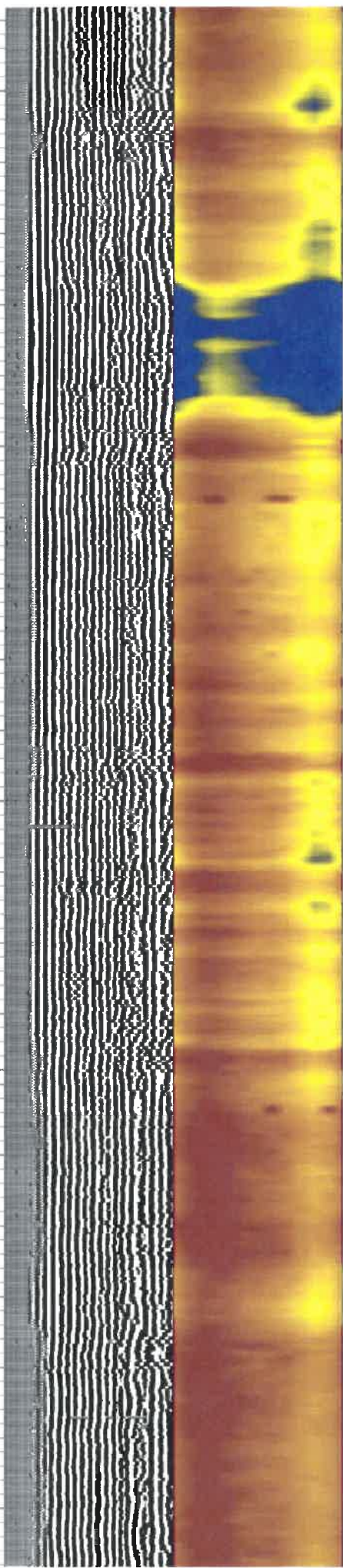
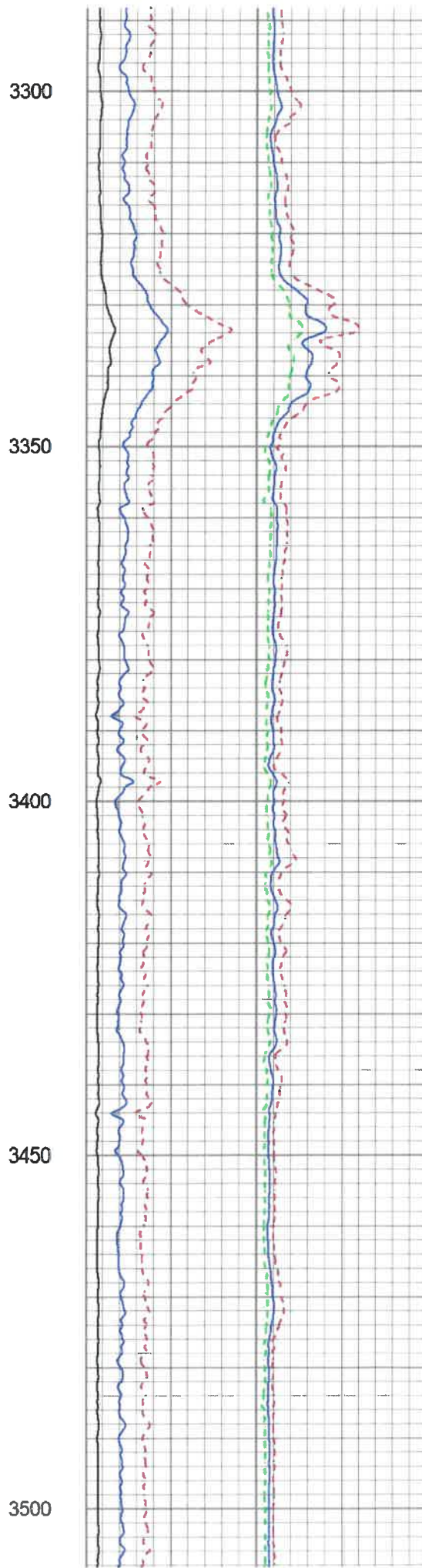
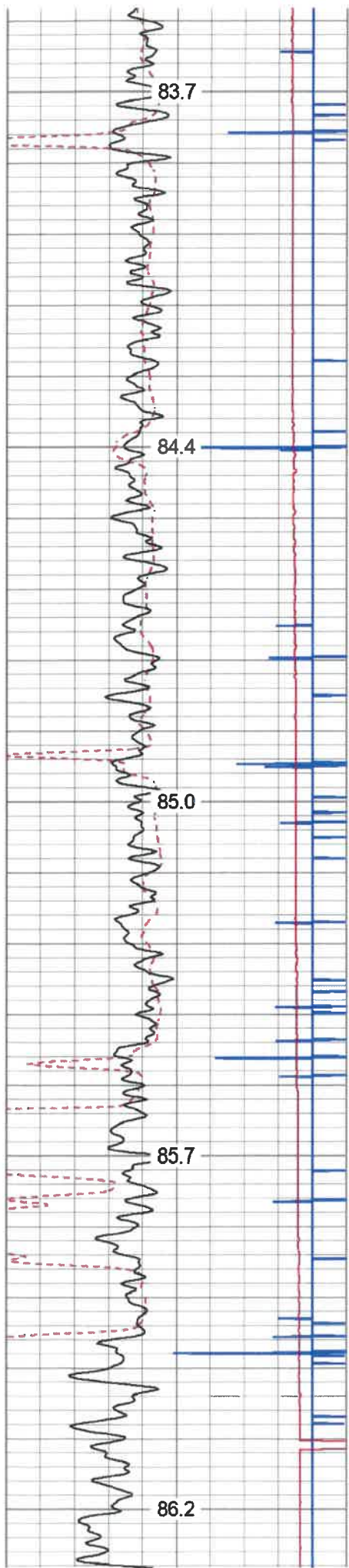
2100

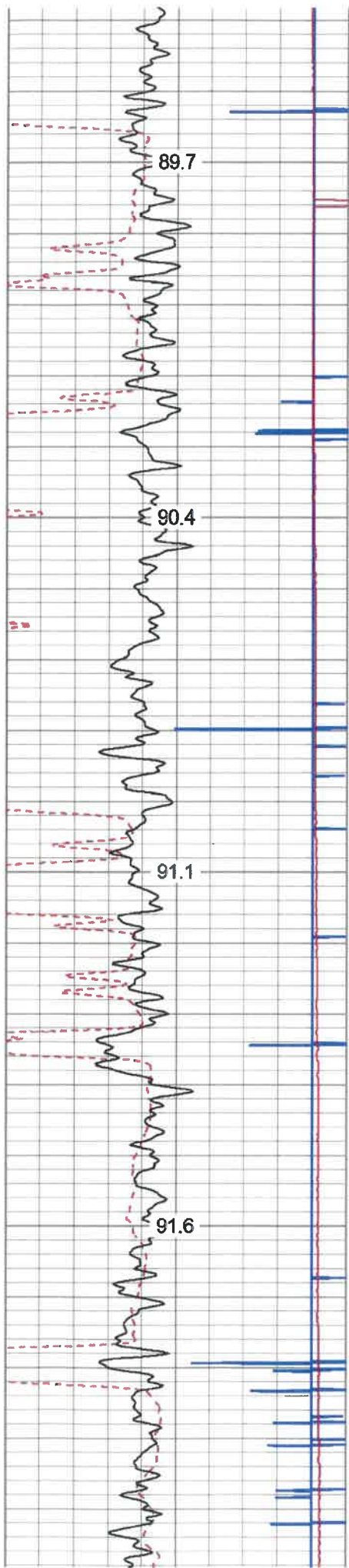
2150









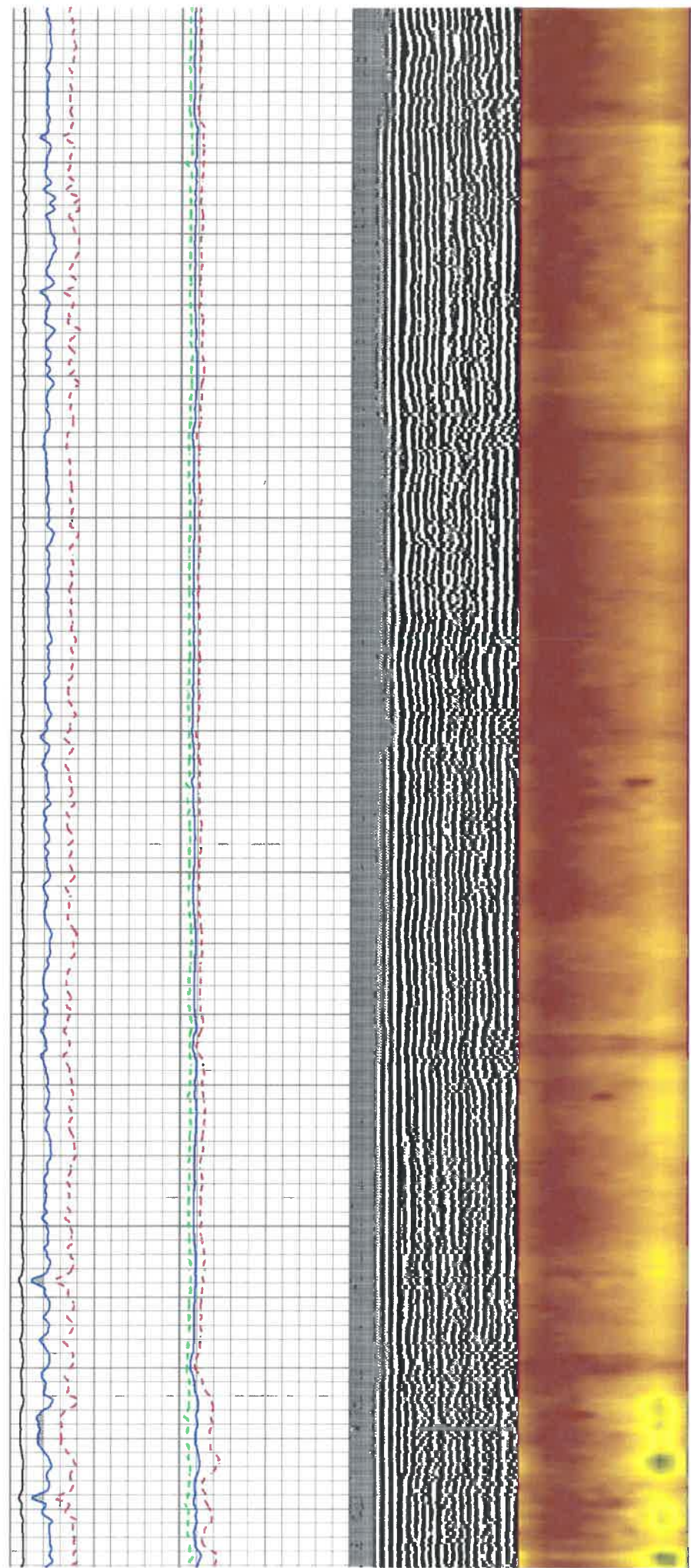


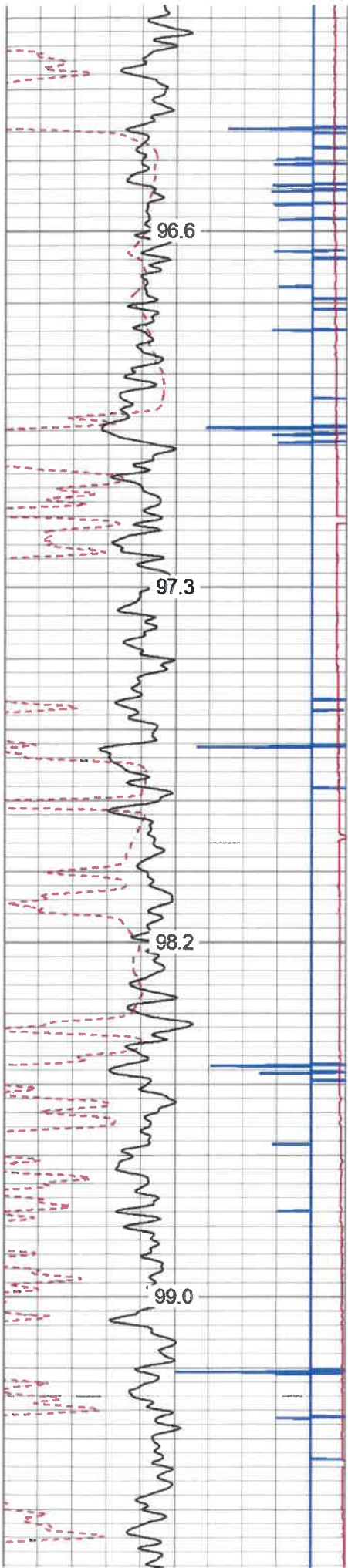
3750

3800

3850

3900



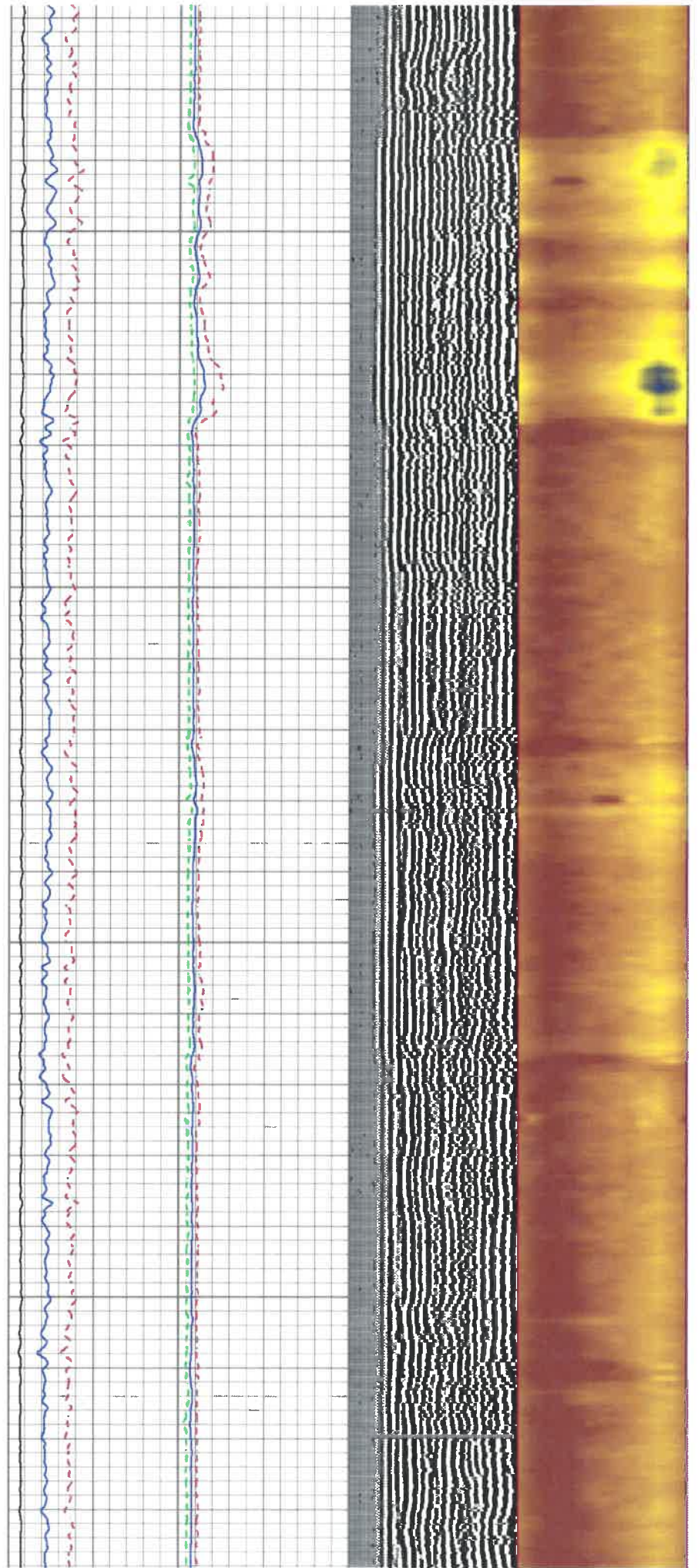


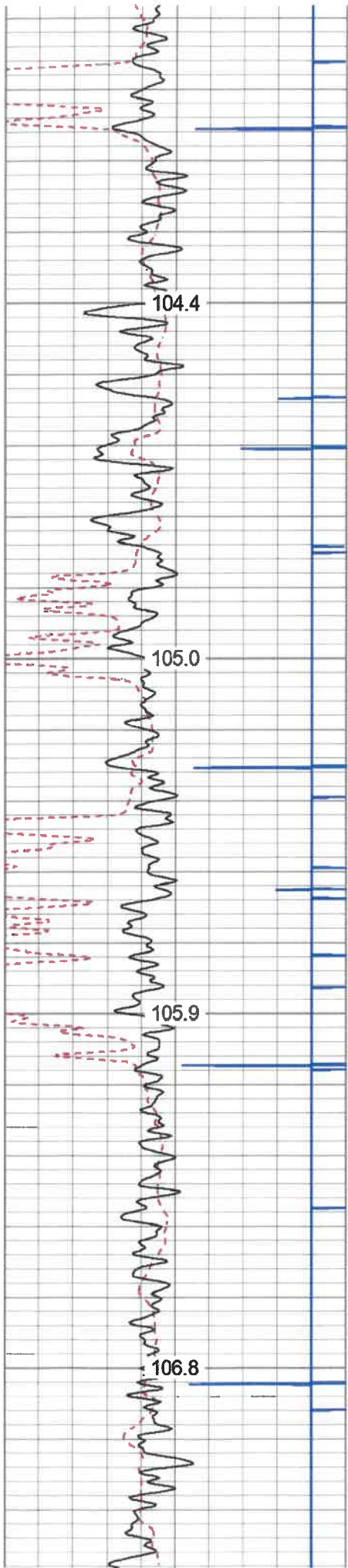
4200

4250

4300

4350



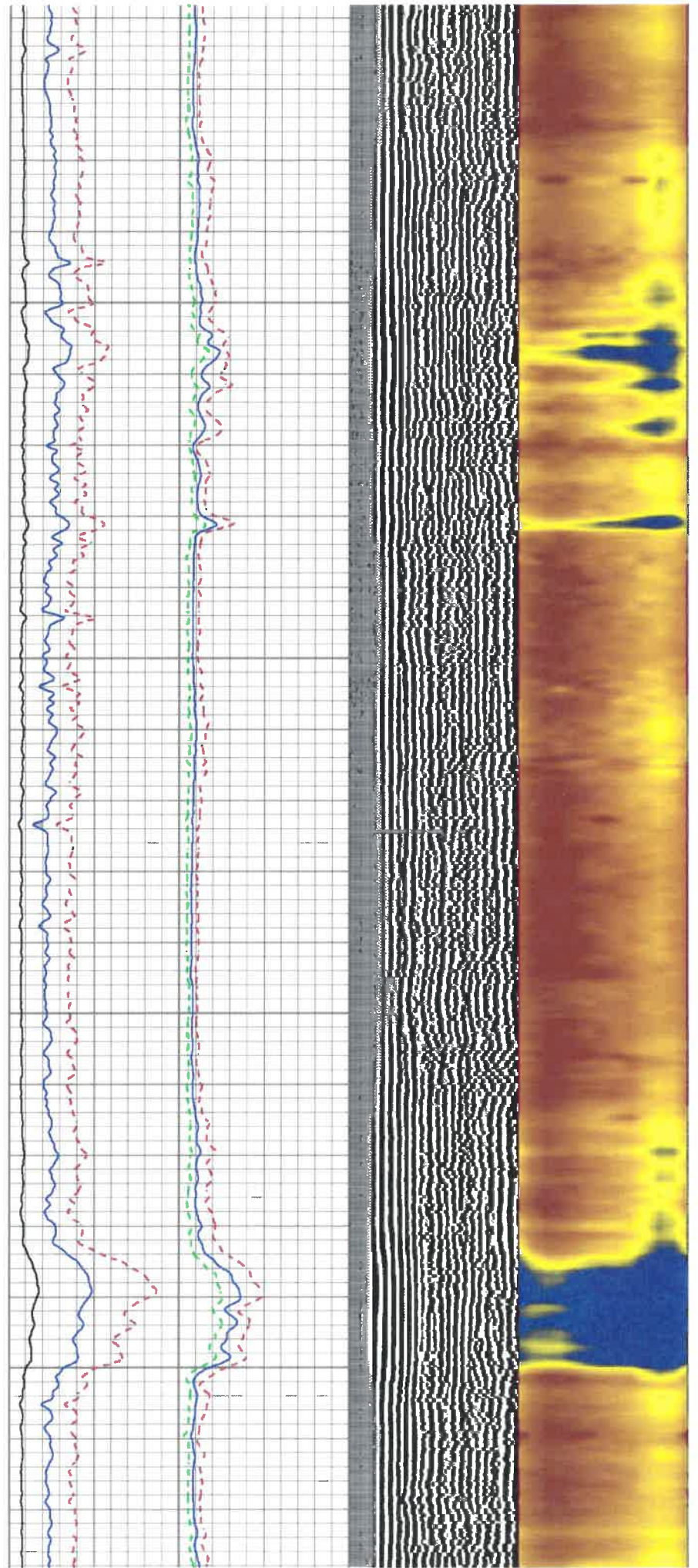


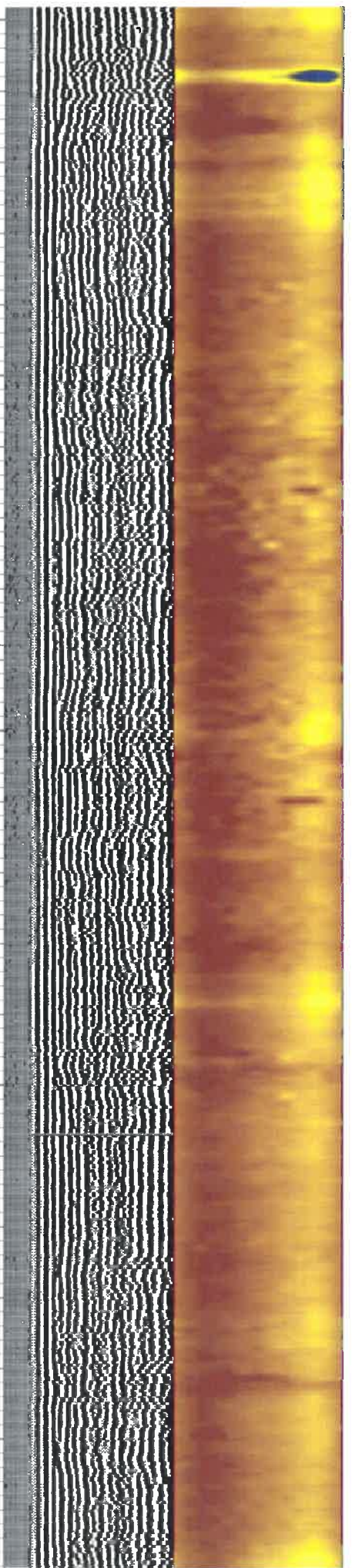
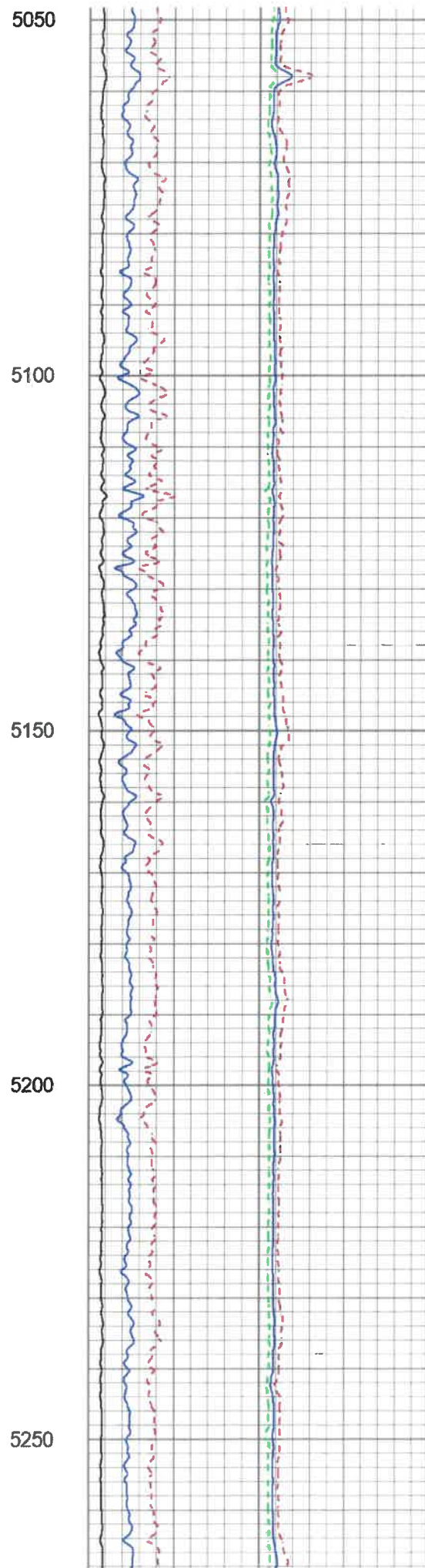
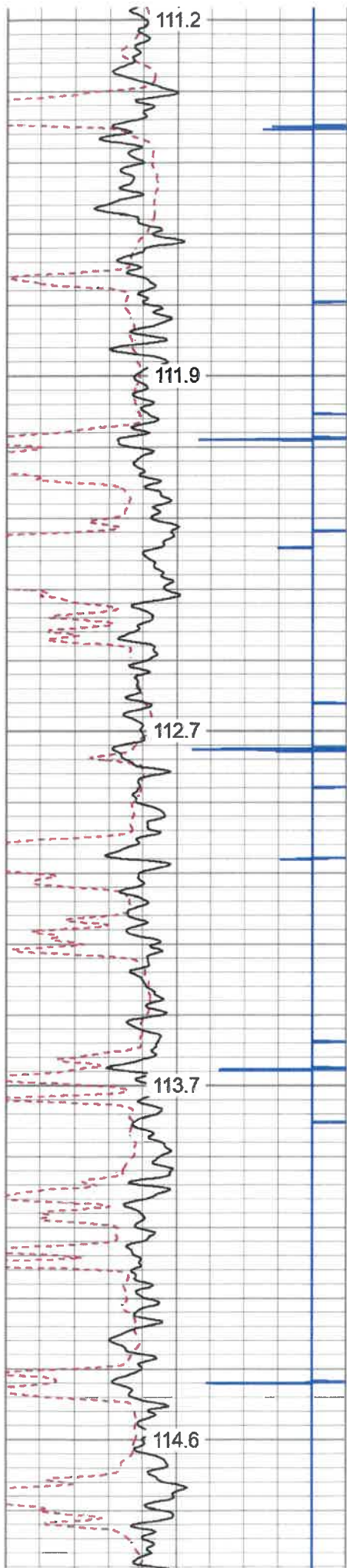
4650

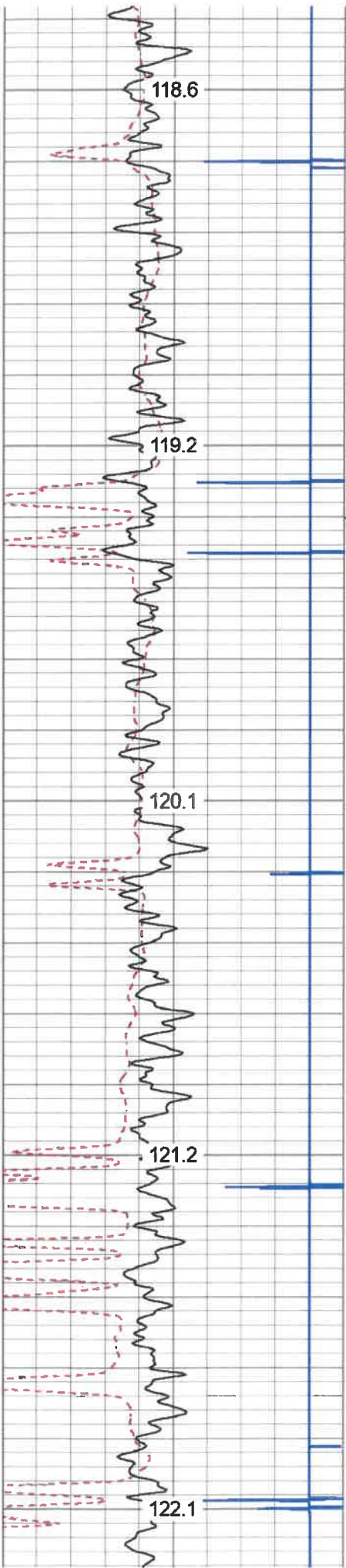
4700

4750

4800

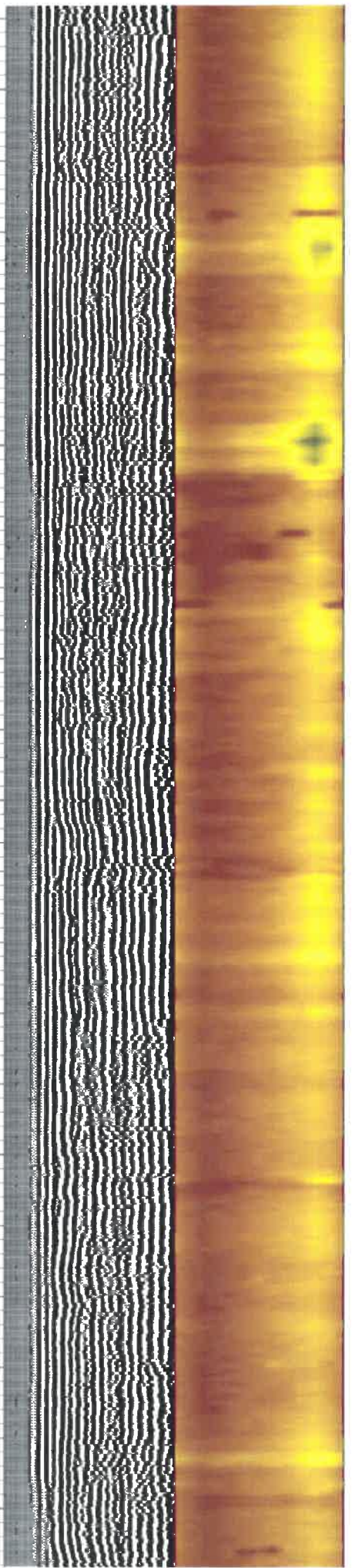
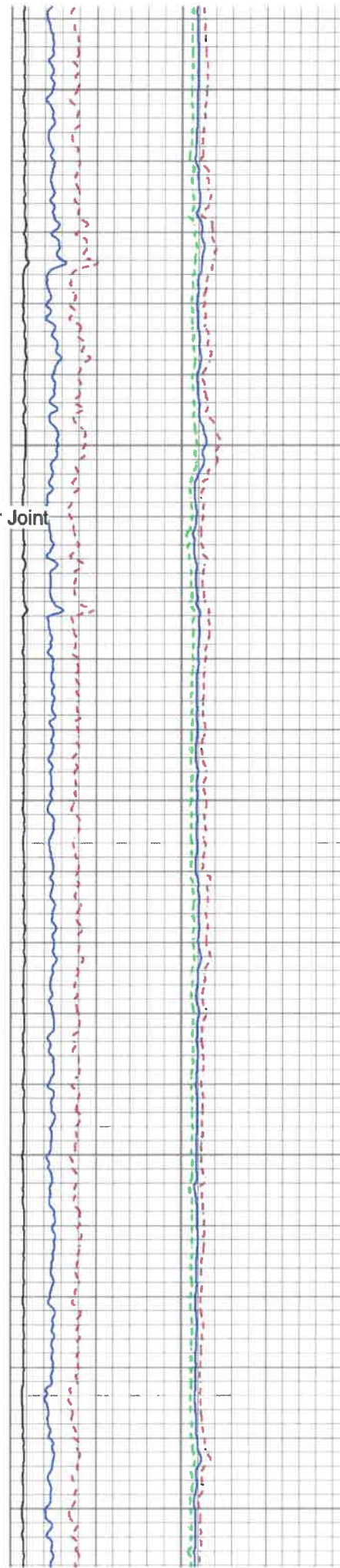


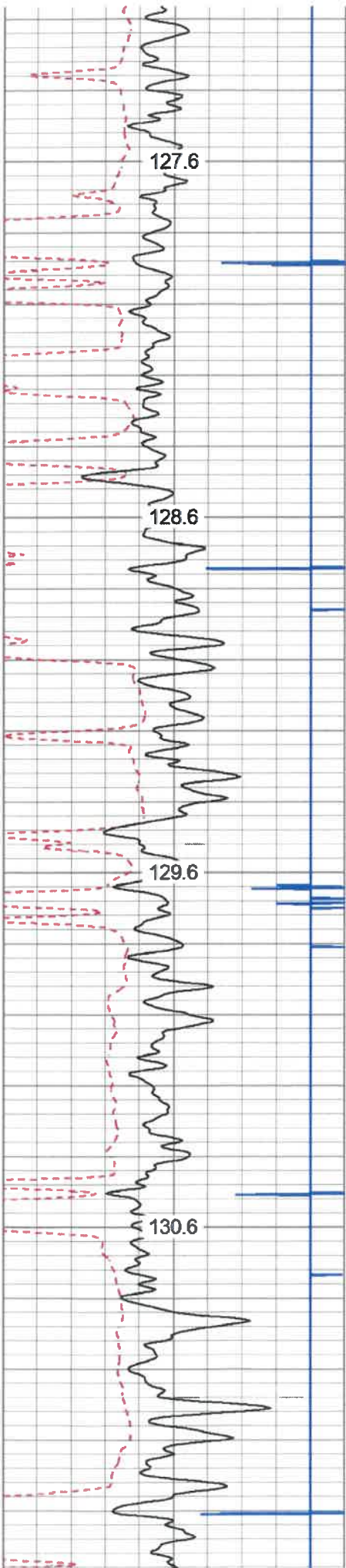




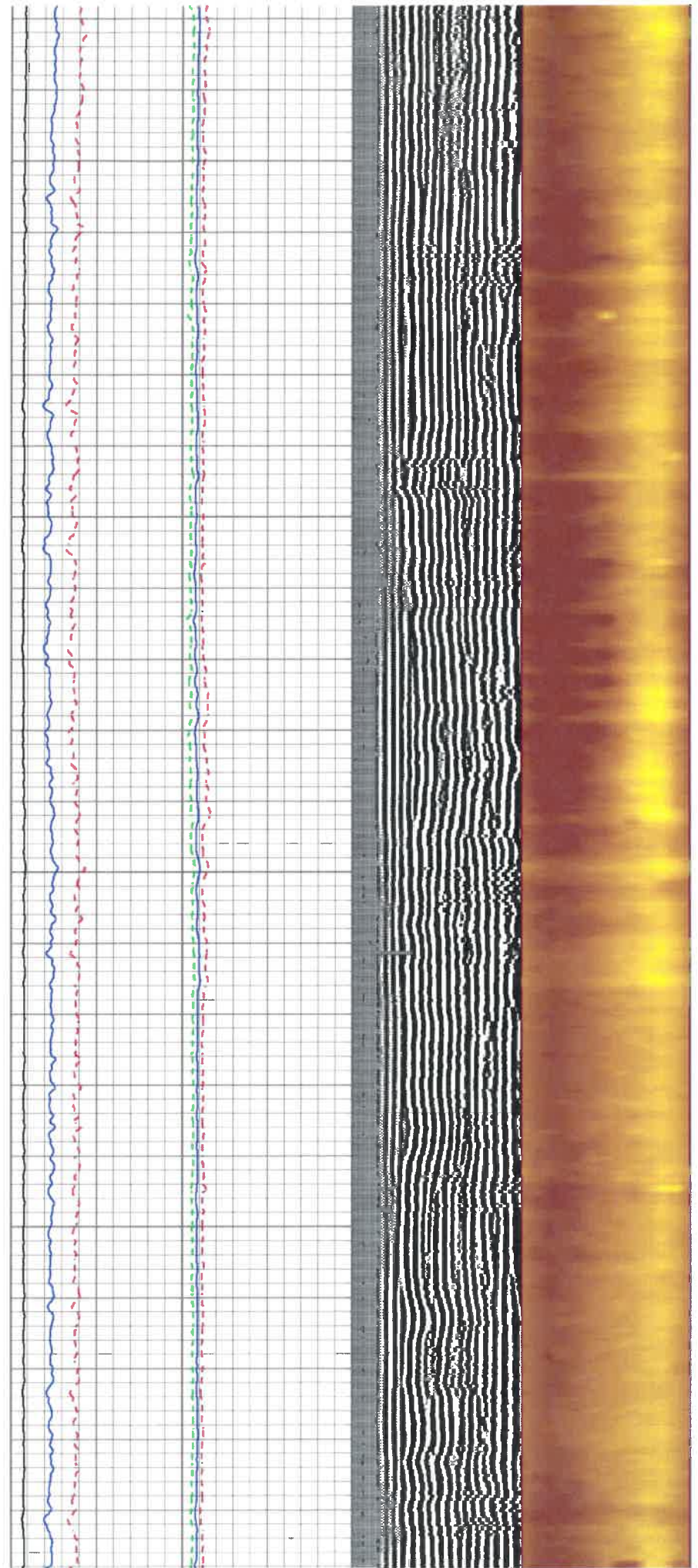
5500
5550
5600
5650
5700

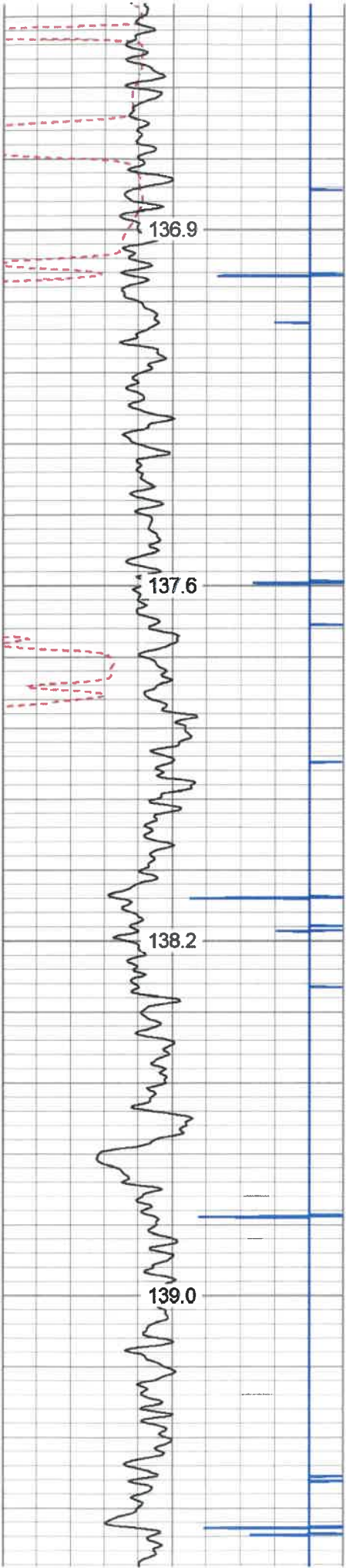
← Marker Joint



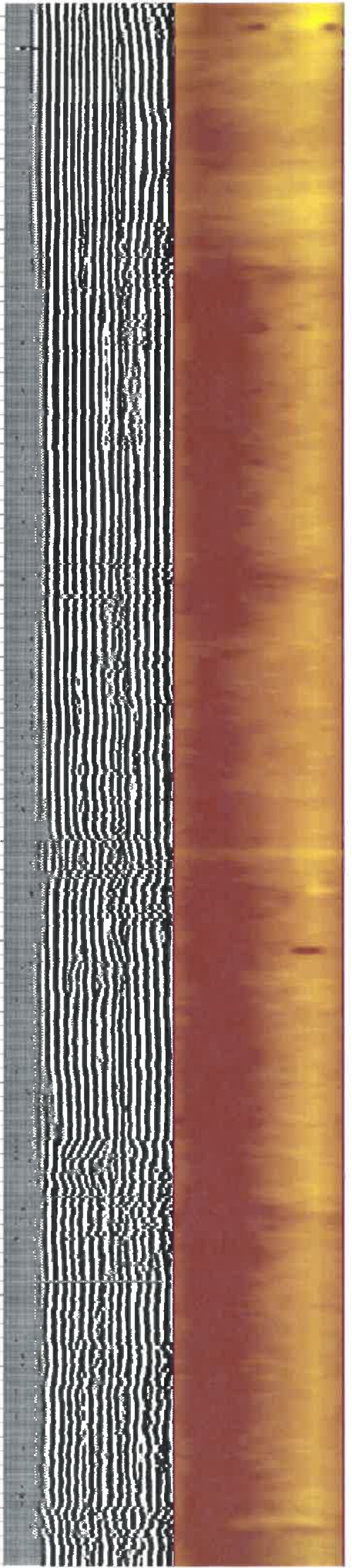
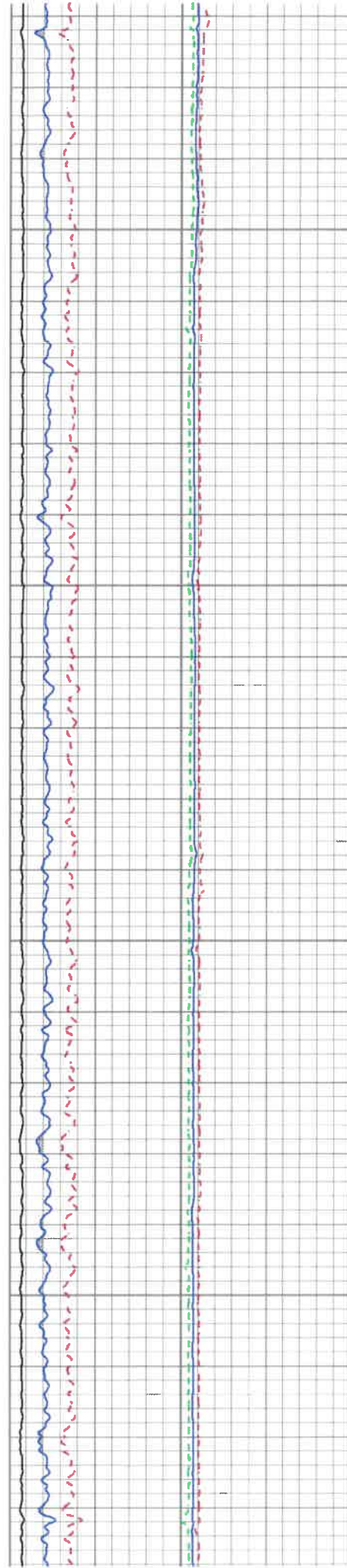


5950
6000
6050
6100





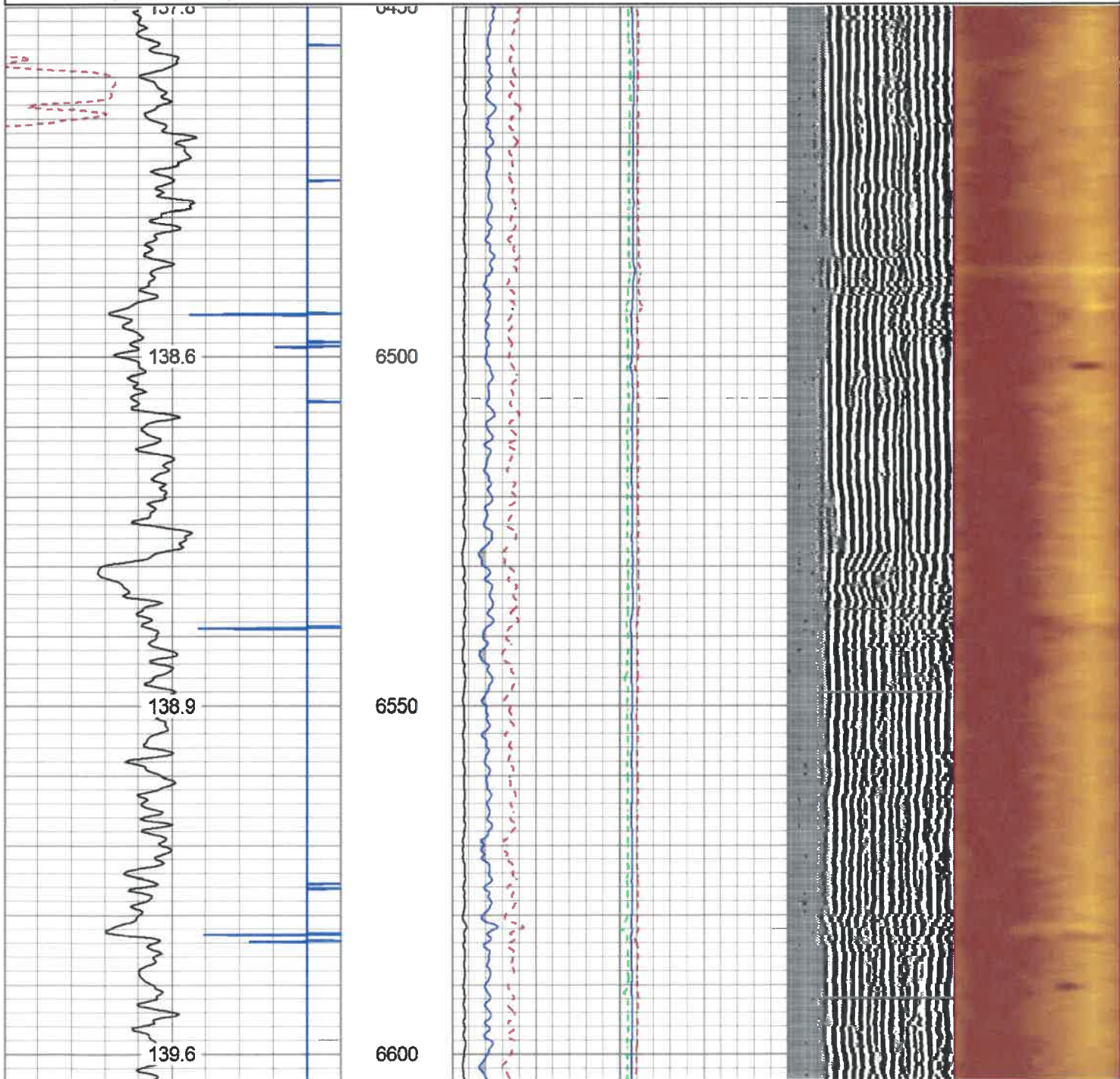
6400
6450
6500
6550



Database File sarahline1h.db
 Dataset Pathname REPEATS2
 Presentation Format antero
 Dataset Creation Wed May 08 13:49:49 2019
 Charted by Depth in Feet scaled 1:240

280	Travel Time (usec)	180	Amplitude		Sector Amp AVG	VDL	1 Sector Map 12
9	Casing Collar	-1	0 (mV)	100	Sector Amp MAX	200 (usec) 1200	
0	Gamma Ray (GAPI)	180	Amp X5		Sector Amp MIN		
0	TEMP (degF)	100	0 (mV)	20			
180	GR (GAPI)	360	1	BONDIX	0		

TEMP (degF)



Serial Number: 0111
 Tool Model: Tek-Co 2 3/4
 Performed: Thu May 02 12:24:19 2019

Calibrator Value: 1.0 GAPI

Background Reading: 0.0 cps
 Calibrator Reading: 1.0 cps

Sensitivity: 0.5000 GAPI/cps

Segmented Cement Bond Log Calibration Report

Serial Number: T12_01
 Tool Model: Tek12

Calibration Casing Diameter: 5.500 in
 Calibration Depth: 12.517 ft

Master Calibration, performed Wed May 08 08:53:16 2019:

	Raw (v)		Calibrated (mv)		Results	
	Zero	Cal	Zero	Cal	Gain	Offset
3'	-0.002	1.120	3.500	71.921	60.959	3.646
CAL	0.555	1.097				
5'	0.011	0.964	3.500	71.921	71.836	2.675
SUM						
S1	0.009	1.642	0.000	100.000	61.220	-0.521
S2	0.008	1.744	0.000	100.000	57.615	-0.463
S3	0.008	1.877	0.000	100.000	53.505	-0.437
S4	0.008	1.844	0.000	100.000	54.470	-0.448
S5	0.008	1.737	0.000	100.000	57.842	-0.468
S6	0.008	1.524	0.000	100.000	65.965	-0.541
S7	0.009	1.354	0.000	100.000	74.323	-0.639
S8	0.009	1.214	0.000	100.000	82.992	-0.728
S9	0.008	1.155	0.000	100.000	87.218	-0.734
S10	0.009	1.238	0.000	100.000	81.346	-0.734
S11	0.009	1.313	0.000	100.000	76.673	-0.705
S12	0.008	1.500	0.000	100.000	67.052	-0.552

Temperature Calibration Report

Serial Number: T12_01
 Tool Model: Tek12
 Performed: Fri Oct 22 17:21:06 2010


	Reference	Reading
Low Reference:	0.00 degF	0.00 usec
High Reference:	1.00 degF	1.00 usec
Gain:	0.33	
Offset:	0.00	
Delta Spacing	2	

Log Variables


DatabaseC:\ProgramData\Warrior\Data\sarahline1h.db
 Dataset field/well/run1/pass5/_vars_

Top - Bottom

BHTEMP_Src	BOREID	BOTTEMP	CASEOD	CASETHCK	CASEWGHT	MAXAMPL	MINAMPL
	in	degF	in	in	lb/ft	mV	mV
TEMP	7.875	100	5.5	0	23	71.9	3.5

GR	1.31		GR-Tek-Co 2 3/4 (0111) Tekco 2 3/4" 400 Deg. F Logging Gamma Ray	3.67	2.75	40.00
			Titan-1.4375_Cap Titan 1 7/16" Cap	0.27	1.44	1.00

Dataset: sarahline1h.db: field/well/run1/pass5
 Total length: 21.37 ft
 Total weight: 256.00 lb
 O.D.: 3.25 in

	Company	ANTERO RESOURCES CORPORATION
	Well	SARAHLENE 12H
	Field	TYLER
	County	TYLER
	State	W.V.
	Country	