



MID
1:240
Feet

Client: FOT
Well Name: 513137
Country: Taylor
Company Representative: *MWD Gamma*

Unique ID/API: 47-9101231
Surface Location: Taylor County
Company Representative: Jeff Lofton/Bill Teel

Country: USA
State: W.V.

Rig Name:
Latitude: 39° 19' 19.002
Longitude: 80° 8' 28.666
Geologist: Dane Fisher

License/Permit#: 01231
Job No.: 1130419
Directional Drillers: Mark Davis, Toby Barrick

Permanent Datum: Mean Sea
Drilling Measurement From: Drill Floor

GL: 1328 Feet
KB: 15.41 Feet
Spud Date: -
Print Date: July 31, 2011
MWD Operator: Bob Dillon, Justin Lee, Derek Means

Leg Name: Main Leg

Comments:

PHOENIX TECHNOLOGY SERVICES, LP (PHOENIX) DOES NOT MAKE AND EXPRESSLY DISCLAIMS ALL WARRANTIES, REPRESENTATIONS AND CONDITIONS, WITH RESPECT TO THE INFORMATION CONTAINED IN THIS DOCUMENT, WHETHER ORAL OR WRITTEN, EXPRESS OR IMPLIED OR ARISING FROM CONTRACT OR STATUTE INCLUDING, WITHOUT LIMITATION, THE IMPLIED WARRANTIES OF MERCHANTABILITY, ACCURACY AND FITNESS FOR A PARTICULAR PURPOSE. ANYONE USING THIS INFORMATION DOES SO AT THEIR OWN RISK AND ACKNOWLEDGES AND AGREES THAT PHOENIX SHALL NOT BE LIABLE FOR ANY ERROR, OMISSION, DEFECT, DELAY, OR INCONVENIENCE IN THE INFORMATION AND WITHOUT LIMITING THE FOREGOING, PHOENIX DOES NOT WARRANT THAT THE INFORMATION OR THE USE THEREOF WILL BE FREE OF ALL ERRORS OR THAT IT DOES NOT INFRINGE ANY THIRD PARTY RIGHTS. ANYONE USING THE INFORMATION AGREES TO INDEMNIFY AND HOLD PHOENIX HARMLESS FROM ALL CLAIMS, ACTIONS, COSTS (INCLUDING LEGAL COSTS) ON A SOLIDFUND AND HSJOWN CLIENT BASIS, AND LIABILITIES ARISING FROM OR IN CONNECTION WITH THE USE OF THE INFORMATION.

BitRun:	1	2	3
Start Depth (ft):	2630	5974.3	8411.9
End Depth (ft):	5974.3	8411.9	10491.17
Start Date:		2011.07.26	2011.07.29
End Date:	2011.07.26	2011.07.29	2011.07.31
Gamma Scale Factor:	5.368	4.645	4.441
Snubey-to-Bit (PTB):	65	65	65
Gamma-to-Bit (GTB):	50	50	51
Tool Carrier ID (ft):	2.75	2.75	2.75
Tool Carrier OD (ft):	5	5	5
Hole Size (ft):	8.5	8.5	7.875
Casing Size (ft):	9.625	9.625	9.625
Casing Start Depth (ft):	0	0	0
Casing End Depth (ft):	2630	2630	2630
Mud Type:	water base	water base	WATER BASE
Mud Weight (lb/gal):	12.3	12.3	12.3
Mud Viscosity:	45	45	48
KCL Correction Factor:	0.000	0.000	0.000
Mud KCL Content (%):	0.001	0.001	0.001
Comment:	-	low mud for run 2 due to mud failure	-lateral

BitRun:			
Start Depth (ft):			
End Depth (ft):			
Start Date:			
End Date:			
Gamma Scale Factor:			
Snubey-to-Bit (PTB):			
Gamma-to-Bit (GTB):			
Tool Carrier ID (ft):			
Tool Carrier OD (ft):			
Hole Size (ft):			
Casing Size (ft):			
Casing Start Depth (ft):			
Casing End Depth (ft):			
Mud Type:			
Mud Weight (lb/gal):			
Mud Viscosity:			
KCL Correction Factor:			
Mud KCL Content (%):			
Comment:			



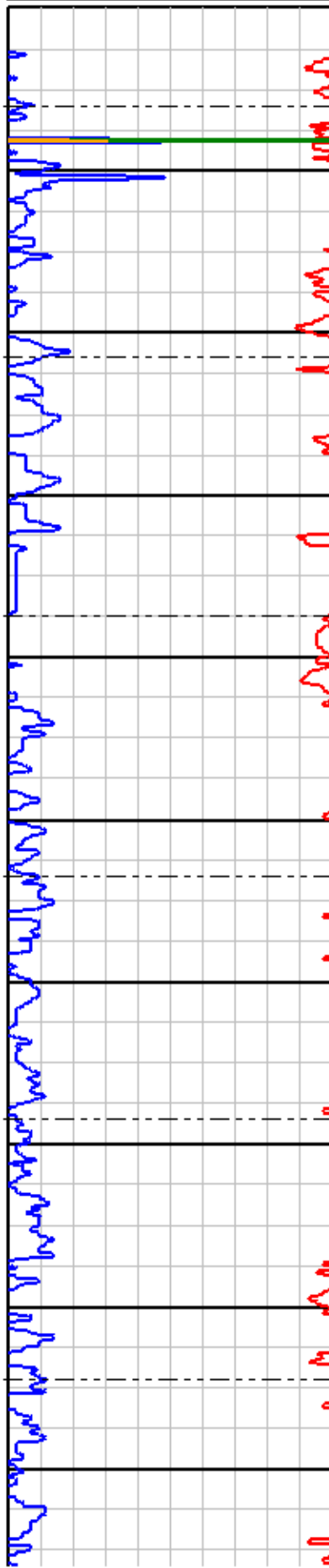
PHOENIX TECHNOLOGY SERVICES

0	Gamma (API)	200
200	Gamma (API)	400
400	Gamma (API)	600
600	Gamma (API)	800

1:240ft

MD

0	ROP (ft/hr)	150
150	ROP (ft/hr)	300



5850

5870

5890

5910

5930

5950

5970

5990

6010

6030

MD: 5862
INC: 2.6
AZM: 185.2
TVD: 5856.71

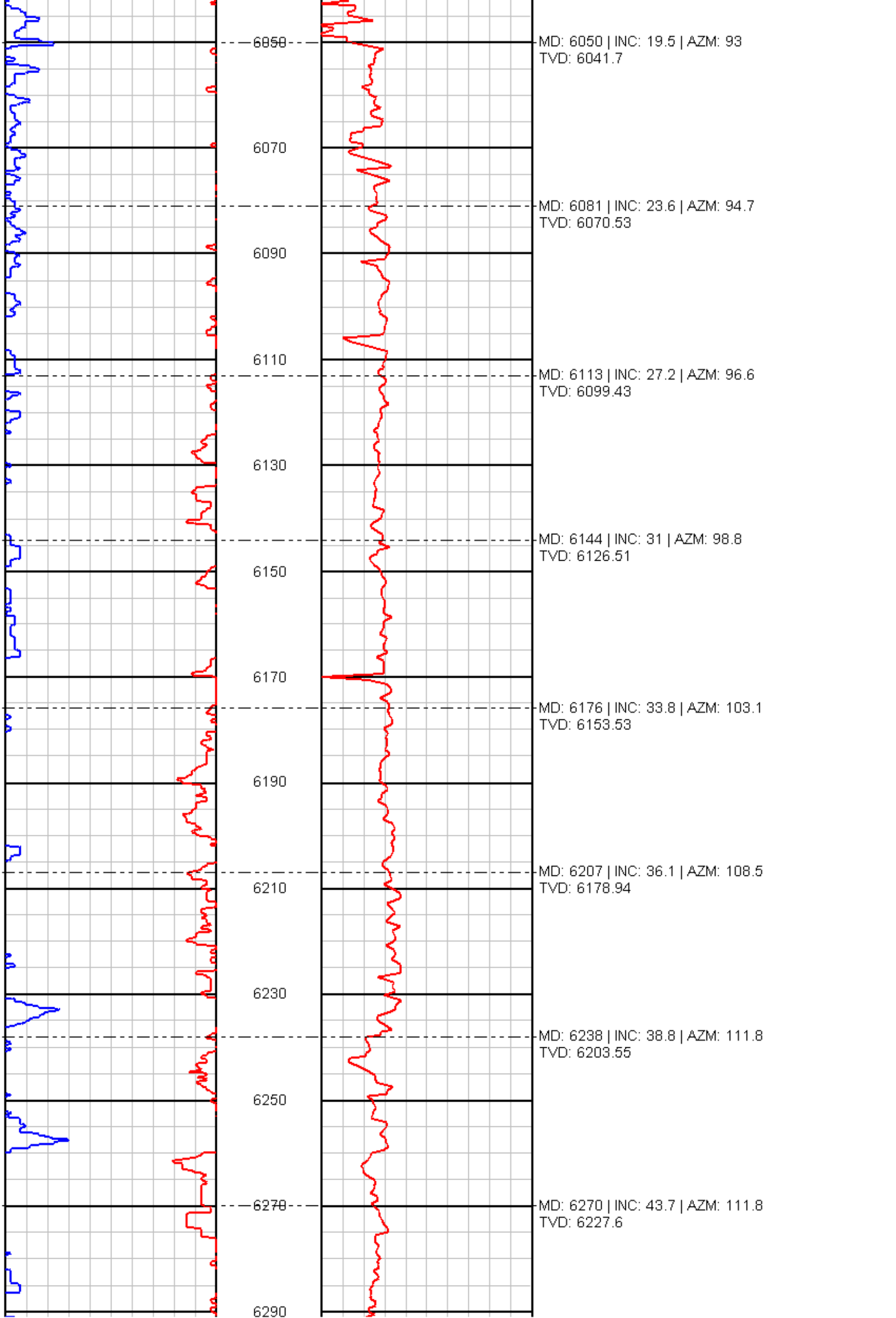
MD: 5893
INC: 2.7
AZM: 188.5
TVD: 5887.68

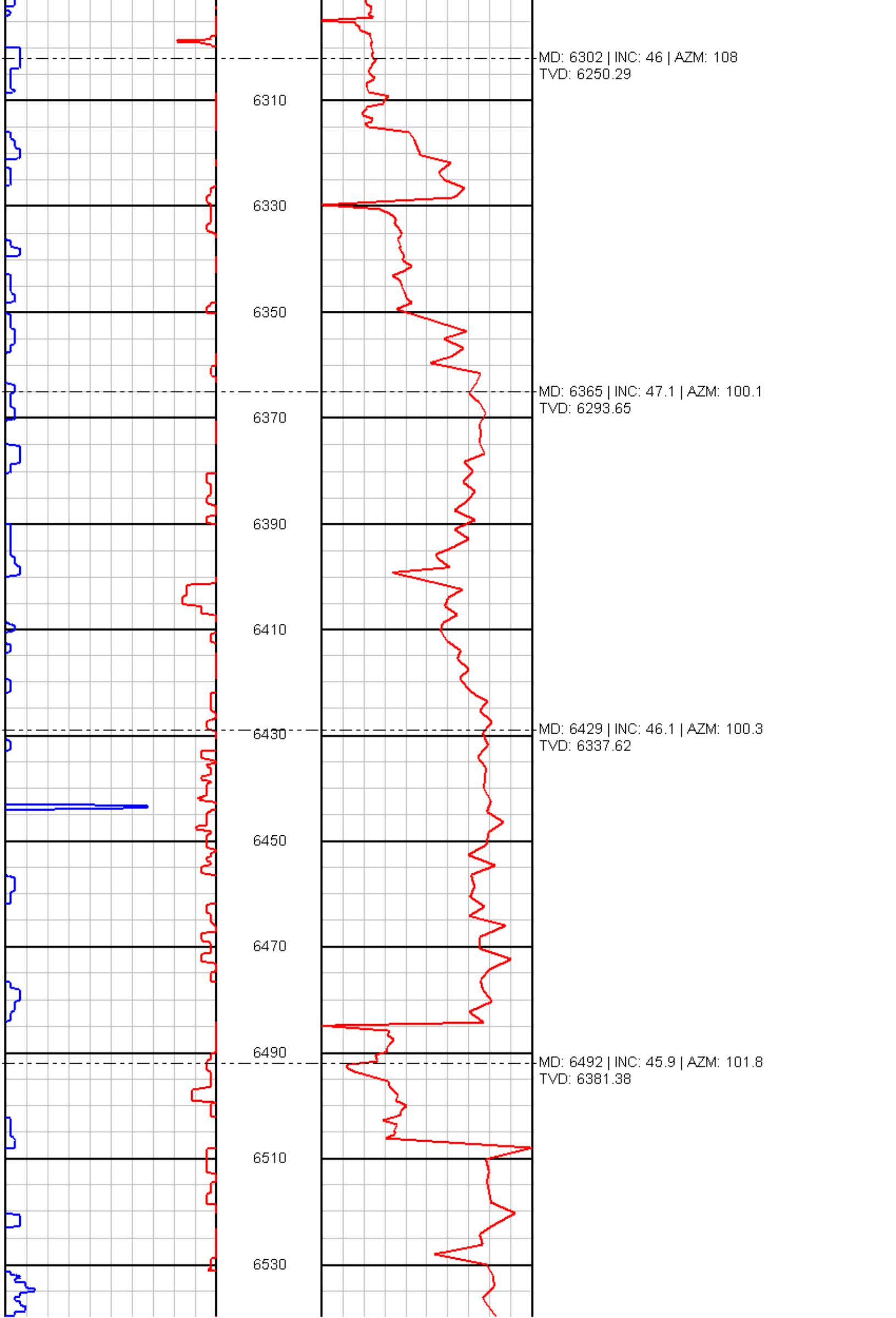
MD: 5925
INC: 4.1
AZM: 137.9
TVD: 5919.63

MD: 5957
INC: 8
AZM: 110.2
TVD: 5951.45

MD: 5987 | INC: 11.4 | AZM: 99.6
TVD: 5981.02

MD: 6019 | INC: 15.5 | AZM: 92.2
TVD: 6012.14





MD: 6302 | INC: 46 | AZM: 108
TVD: 6250.29

6310

6330

6350

MD: 6365 | INC: 47.1 | AZM: 100.1
TVD: 6293.65

6370

6390

6410

MD: 6429 | INC: 46.1 | AZM: 100.3
TVD: 6337.62

6430

6450

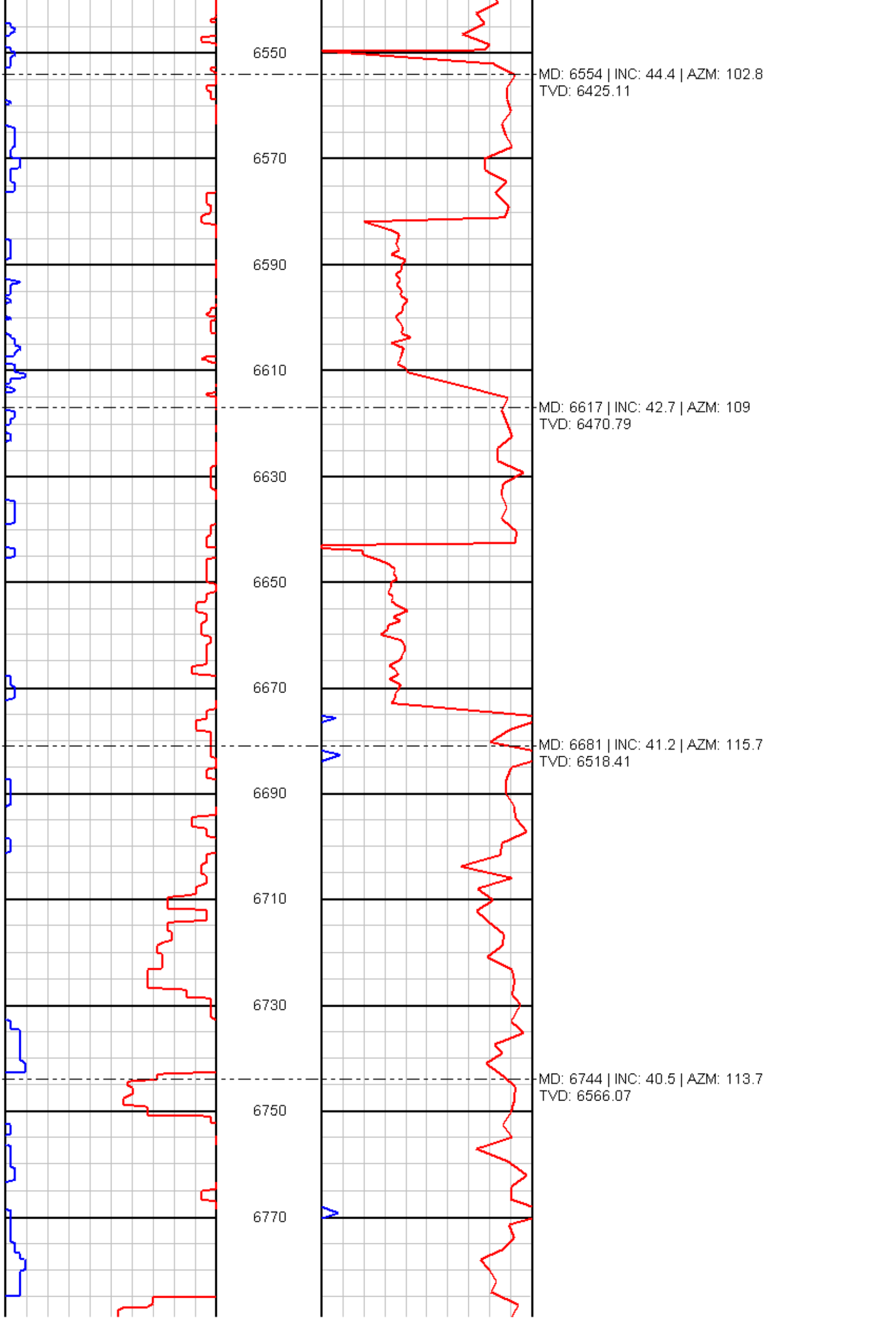
6470

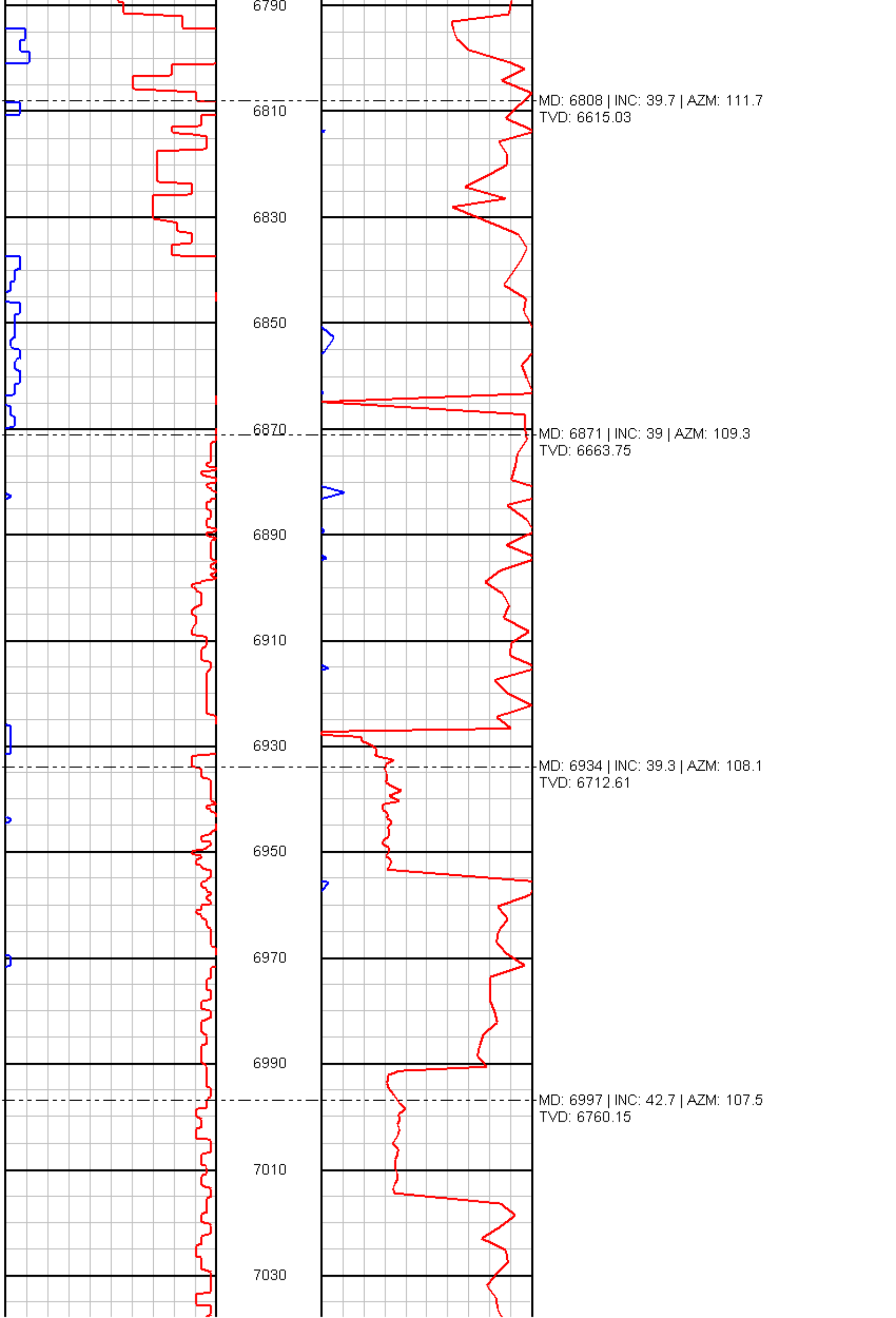
6490

MD: 6492 | INC: 45.9 | AZM: 101.8
TVD: 6381.38

6510

6530





6790

6810

6830

6850

6870

6890

6910

6930

6950

6970

6990

7010

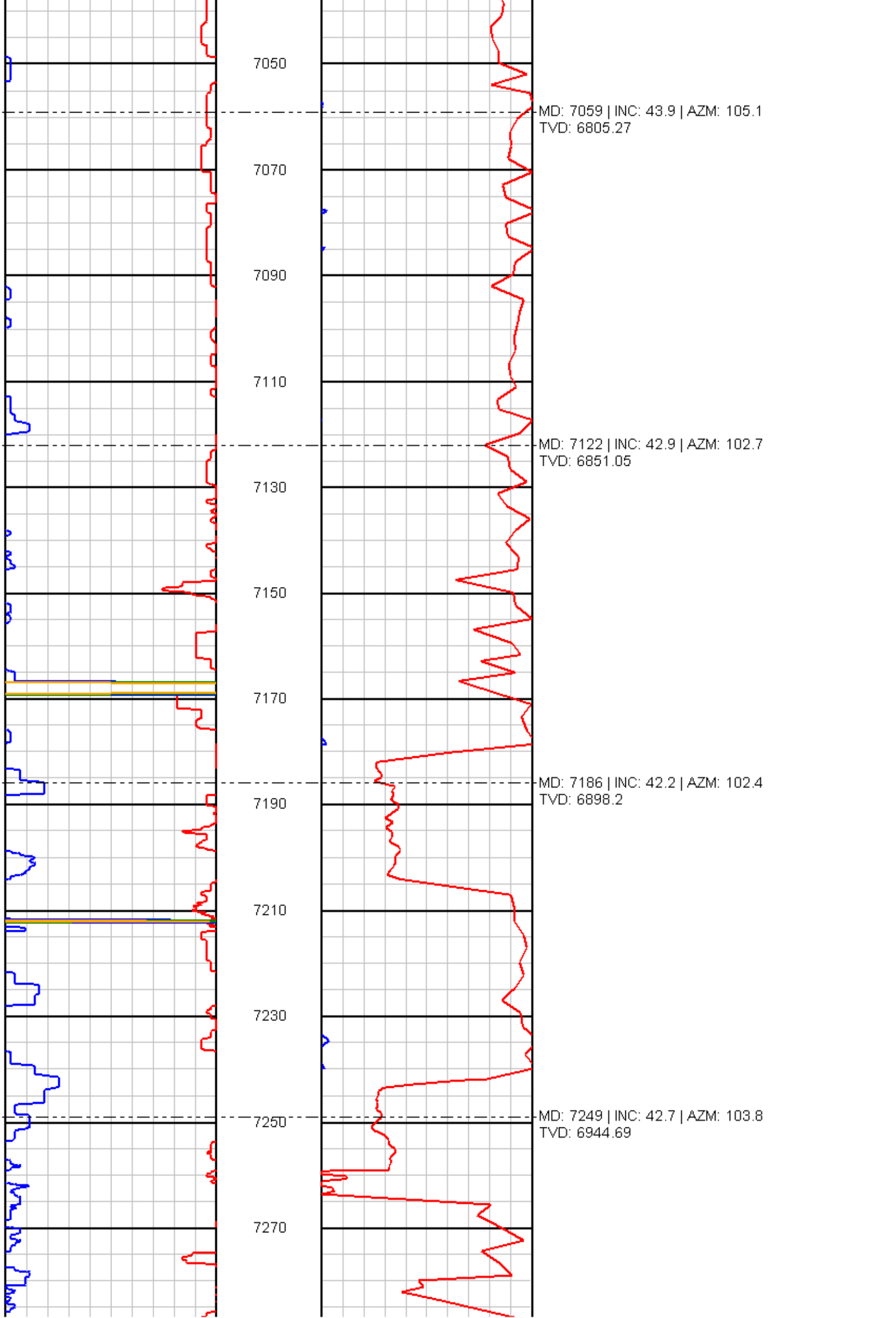
7030

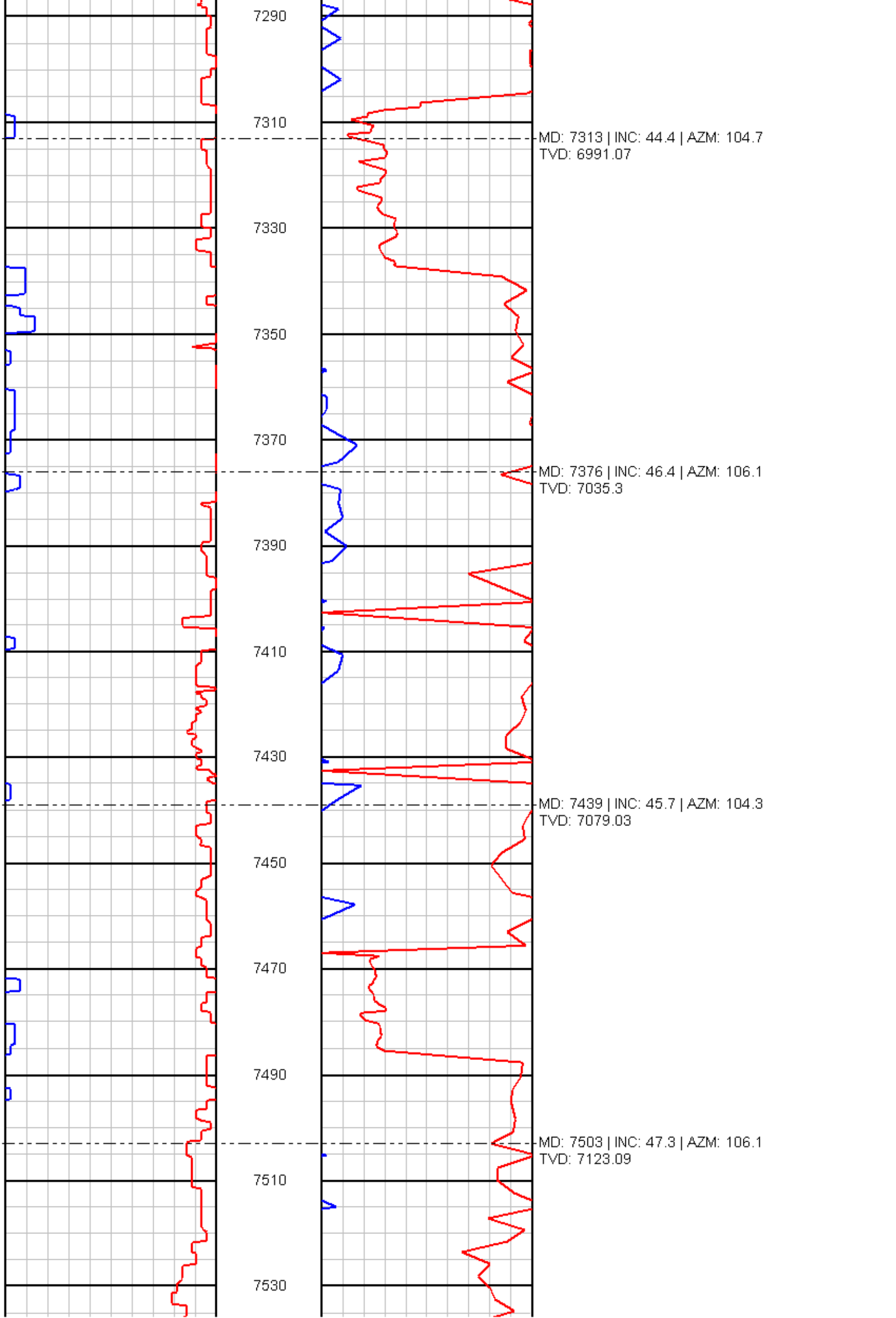
MD: 6808 | INC: 39.7 | AZM: 111.7
TVD: 6615.03

MD: 6871 | INC: 39 | AZM: 109.3
TVD: 6663.75

MD: 6934 | INC: 39.3 | AZM: 108.1
TVD: 6712.61

MD: 6997 | INC: 42.7 | AZM: 107.5
TVD: 6760.15





7290

7310

MD: 7313 | INC: 44.4 | AZM: 104.7
TVD: 6991.07

7330

7350

7370

MD: 7376 | INC: 46.4 | AZM: 106.1
TVD: 7035.3

7390

7410

7430

MD: 7439 | INC: 45.7 | AZM: 104.3
TVD: 7079.03

7450

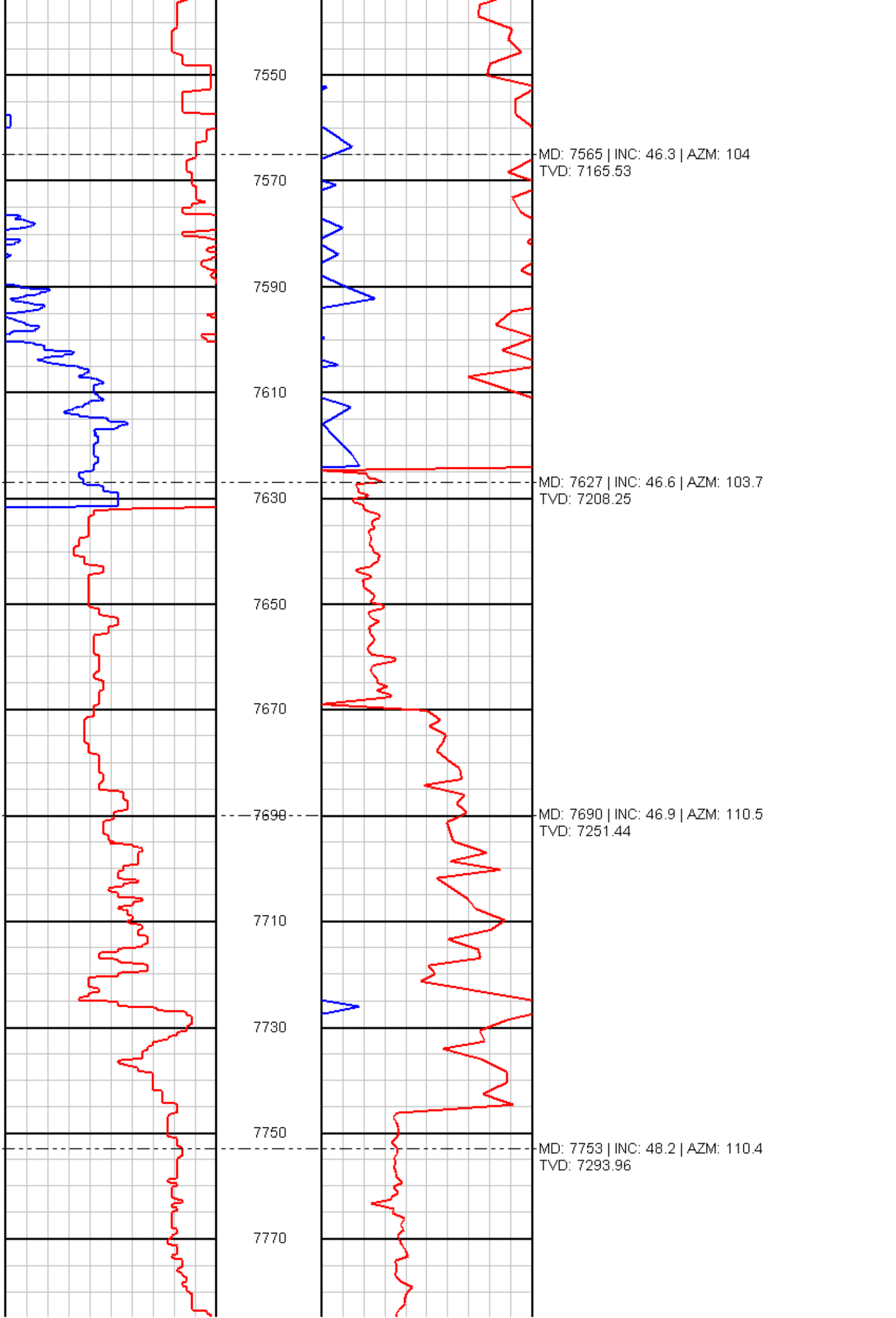
7470

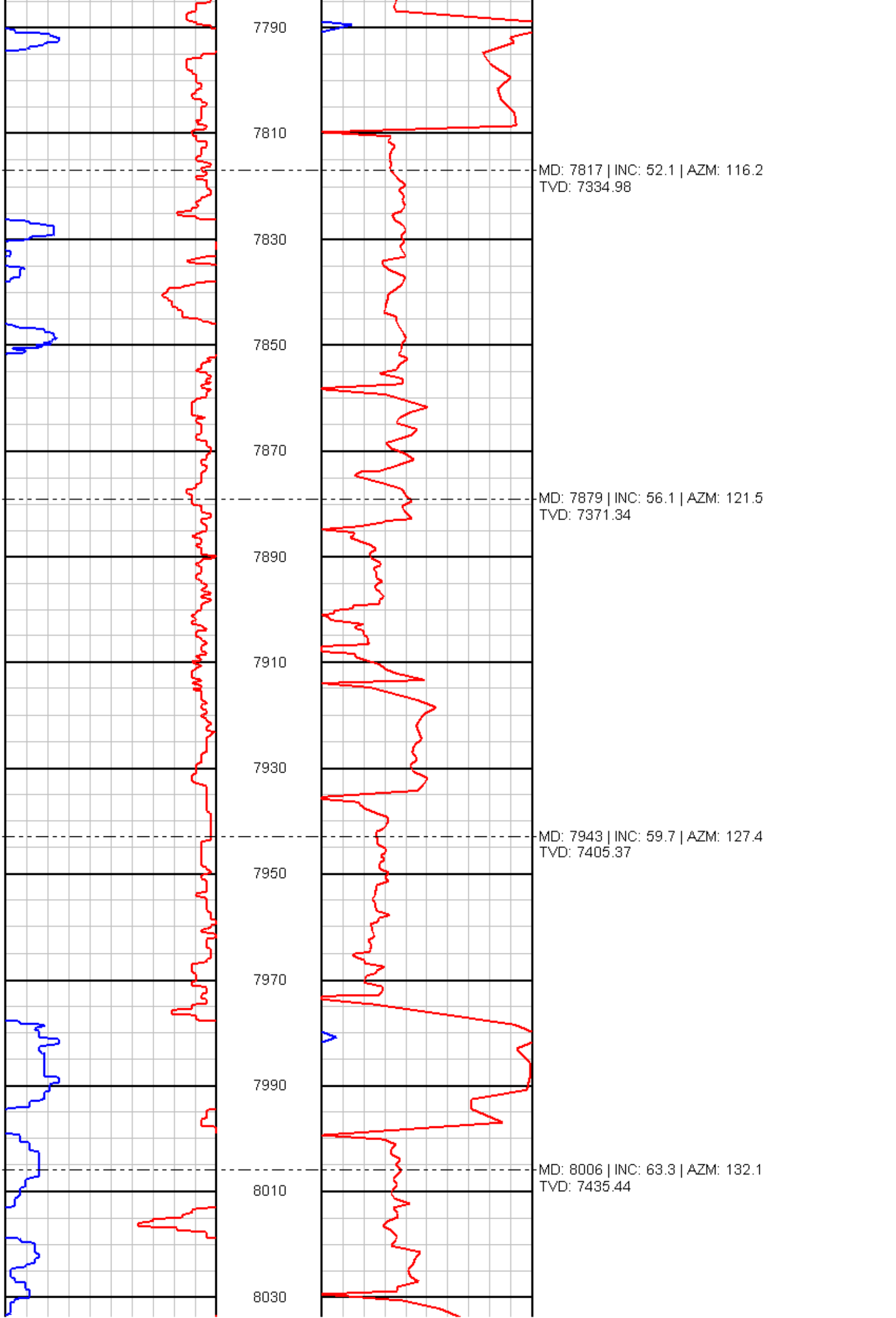
7490

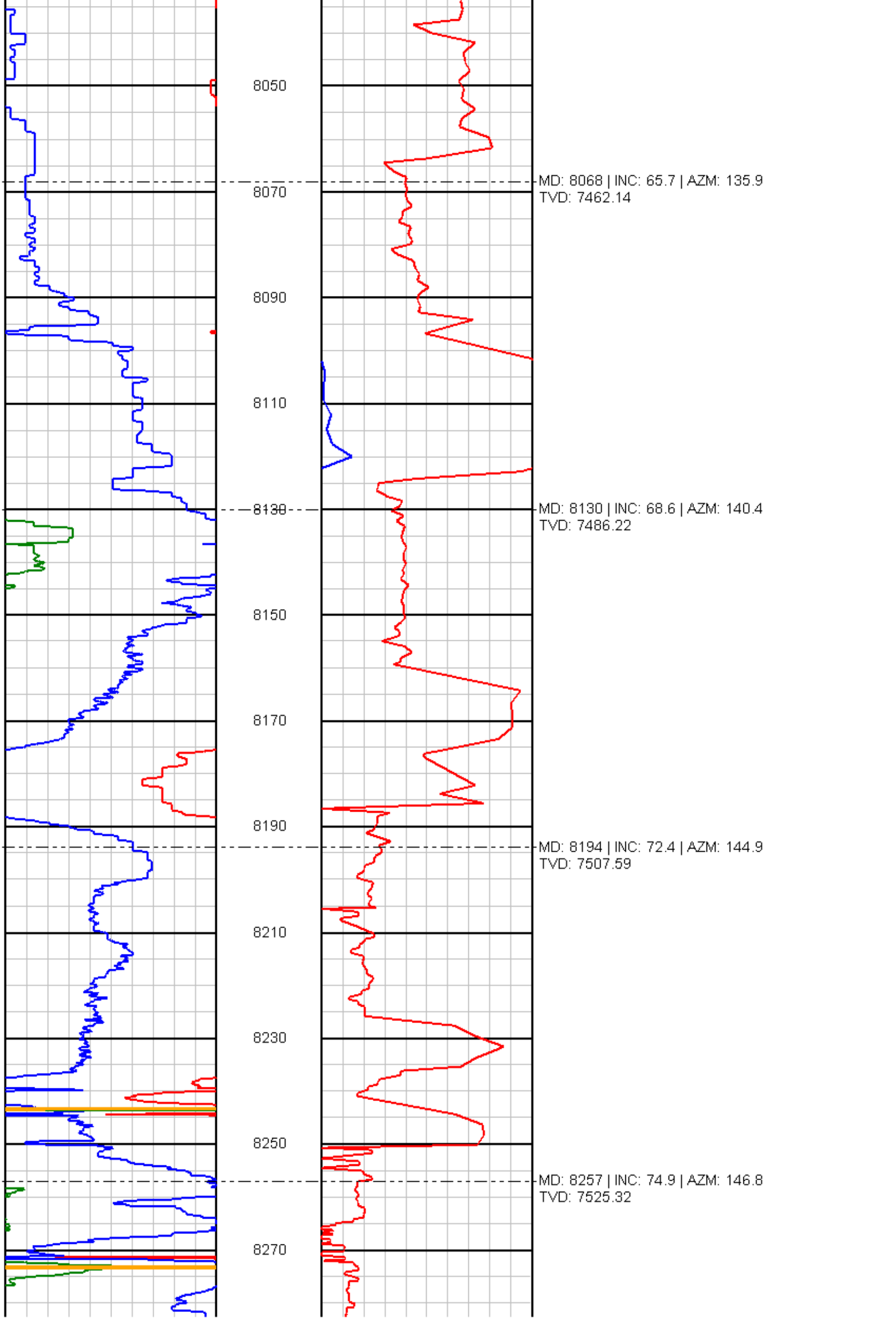
MD: 7503 | INC: 47.3 | AZM: 106.1
TVD: 7123.09

7510

7530







8050

8070

MD: 8068 | INC: 65.7 | AZM: 135.9
TVD: 7462.14

8090

8110

8130

MD: 8130 | INC: 68.6 | AZM: 140.4
TVD: 7486.22

8150

8170

8190

MD: 8194 | INC: 72.4 | AZM: 144.9
TVD: 7507.59

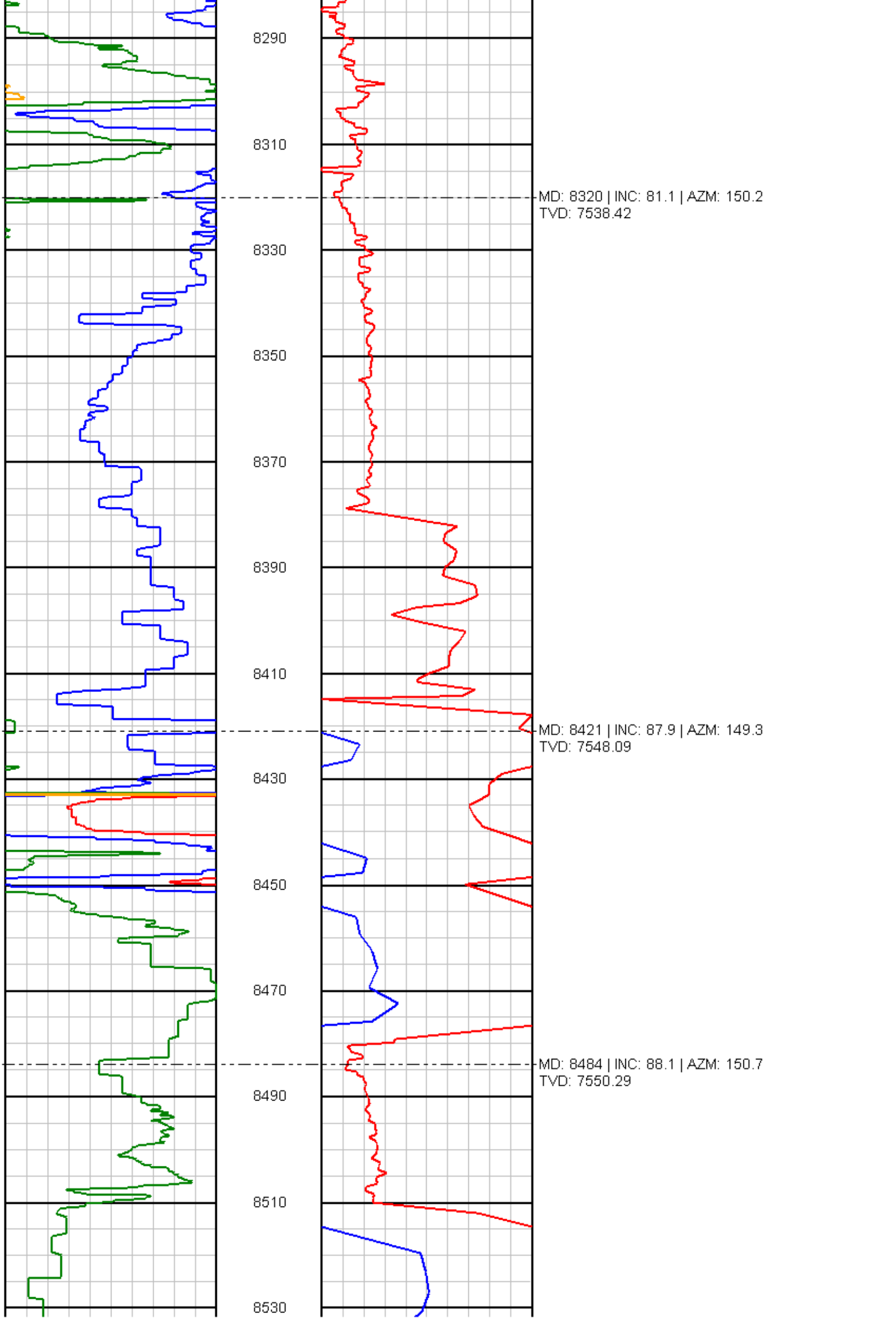
8210

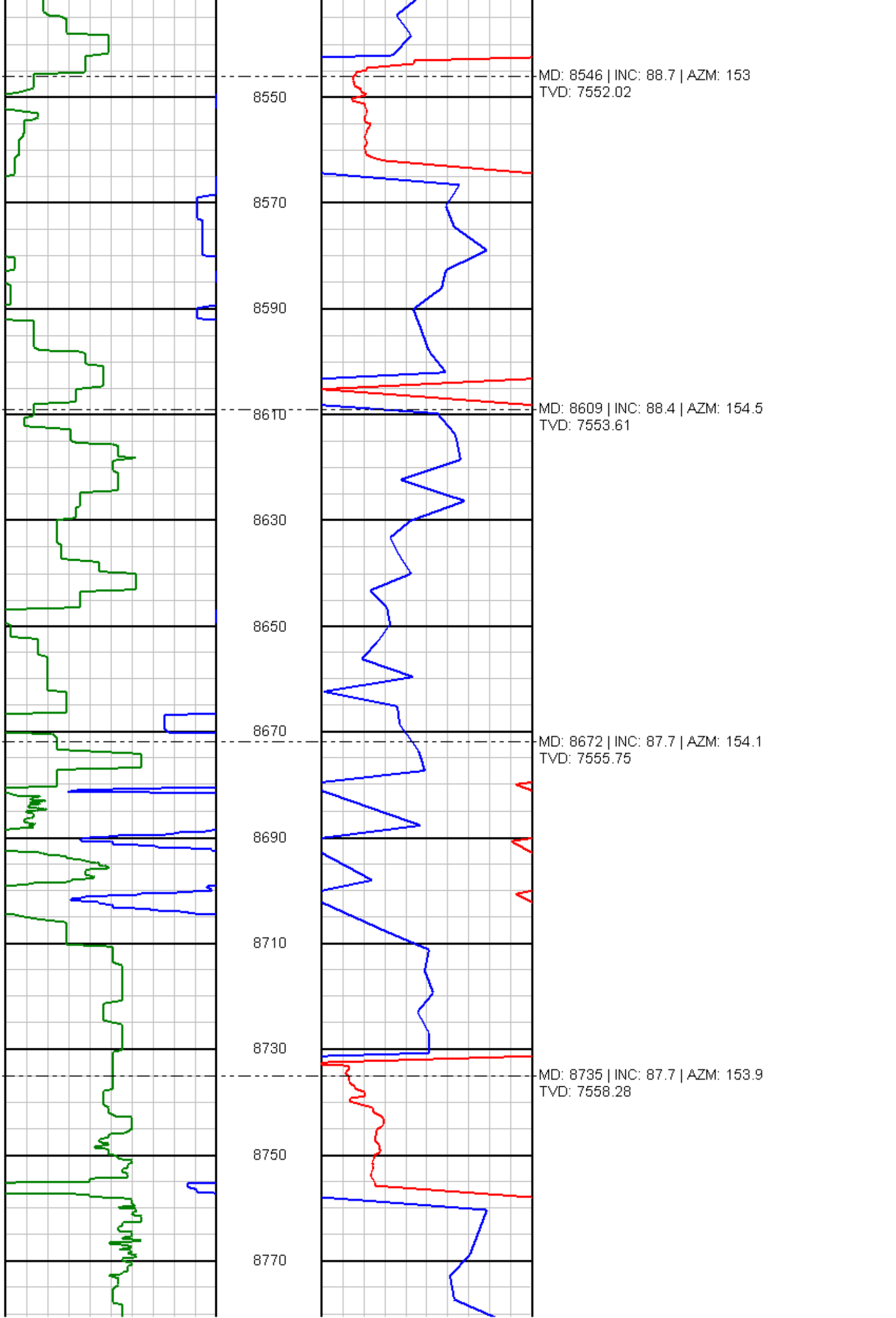
8230

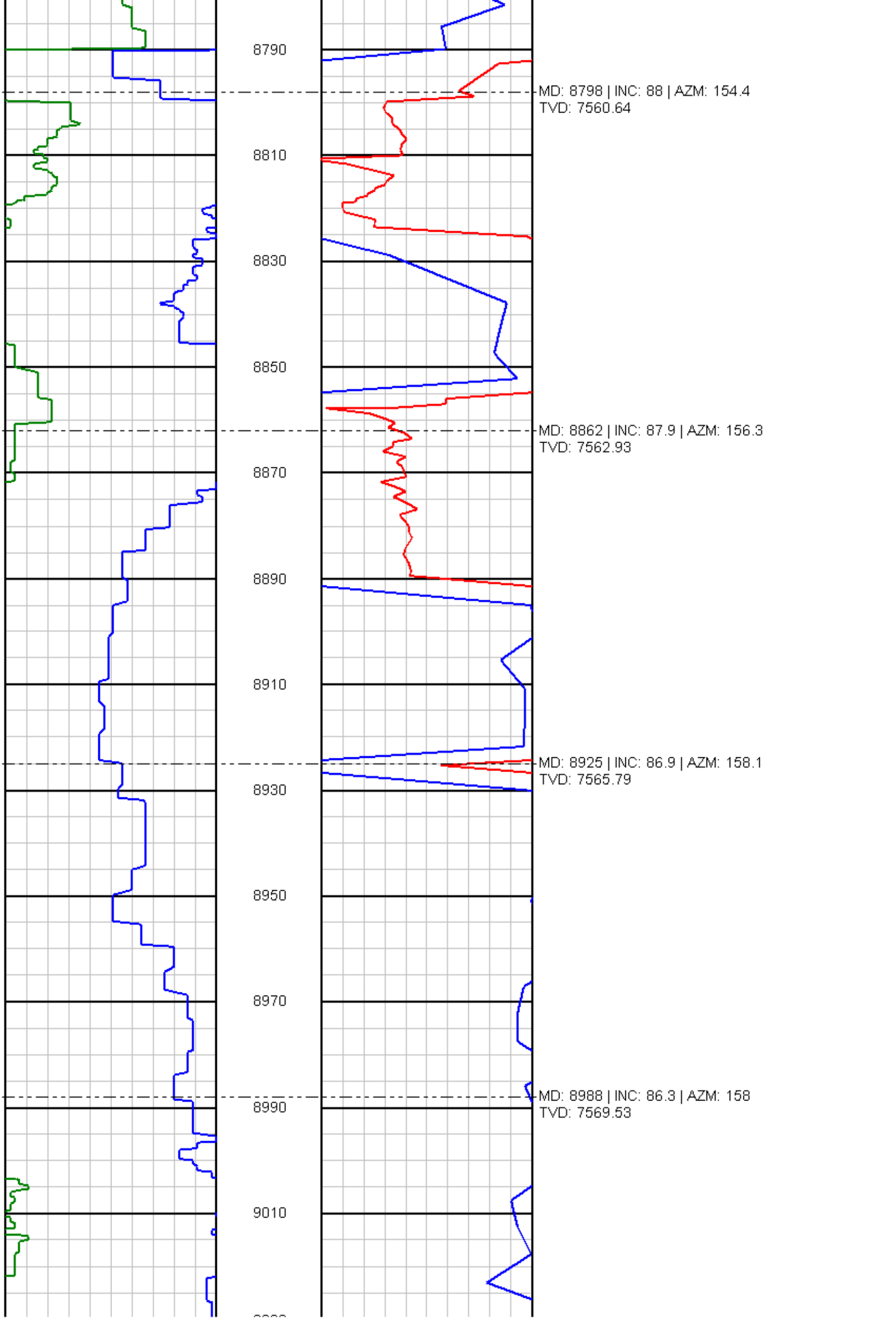
8250

MD: 8257 | INC: 74.9 | AZM: 146.8
TVD: 7525.32

8270







8790

MD: 8798 | INC: 88 | AZM: 154.4
TVD: 7560.64

8810

8830

8850

MD: 8862 | INC: 87.9 | AZM: 156.3
TVD: 7562.93

8870

8890

8910

MD: 8925 | INC: 86.9 | AZM: 158.1
TVD: 7565.79

8930

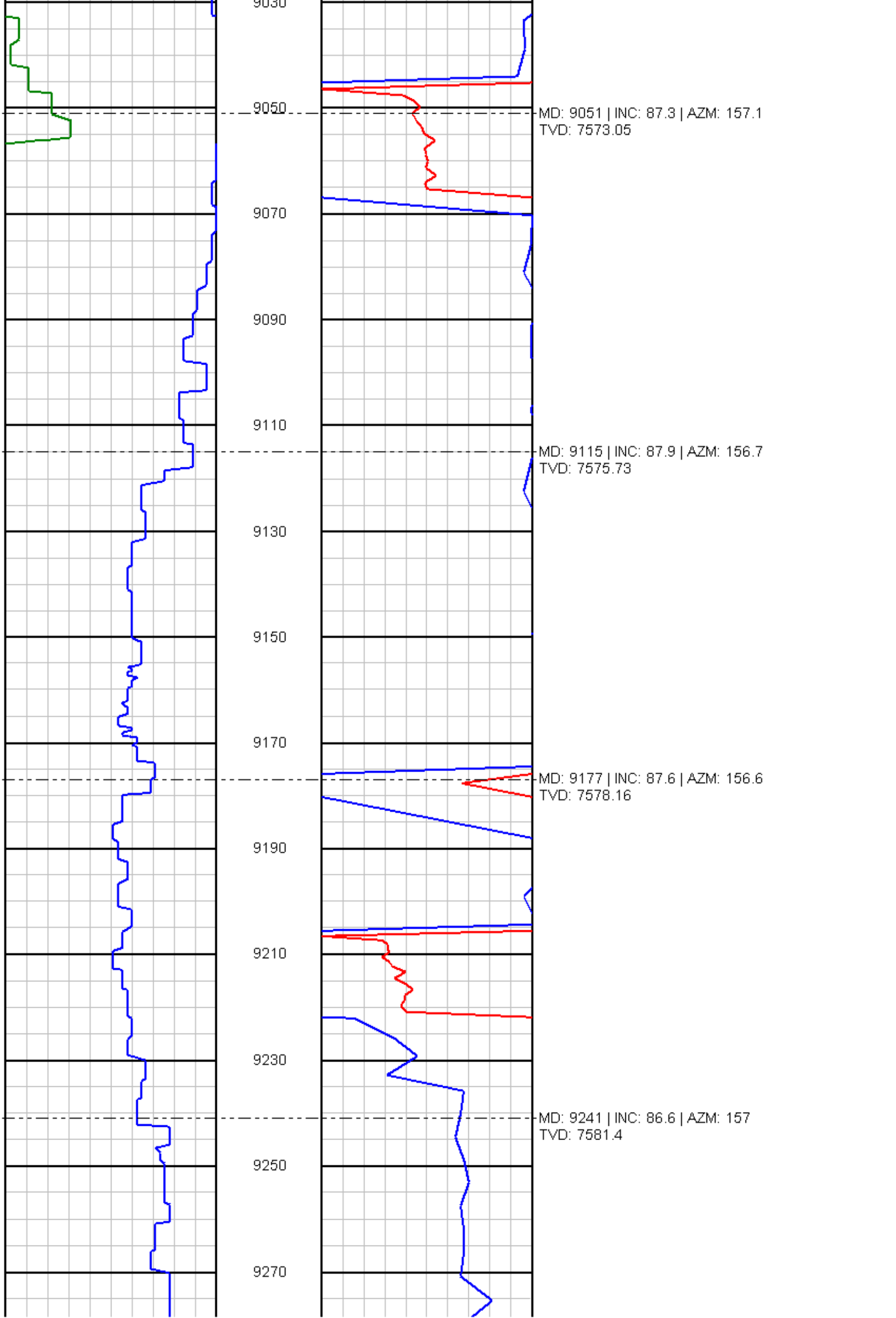
8950

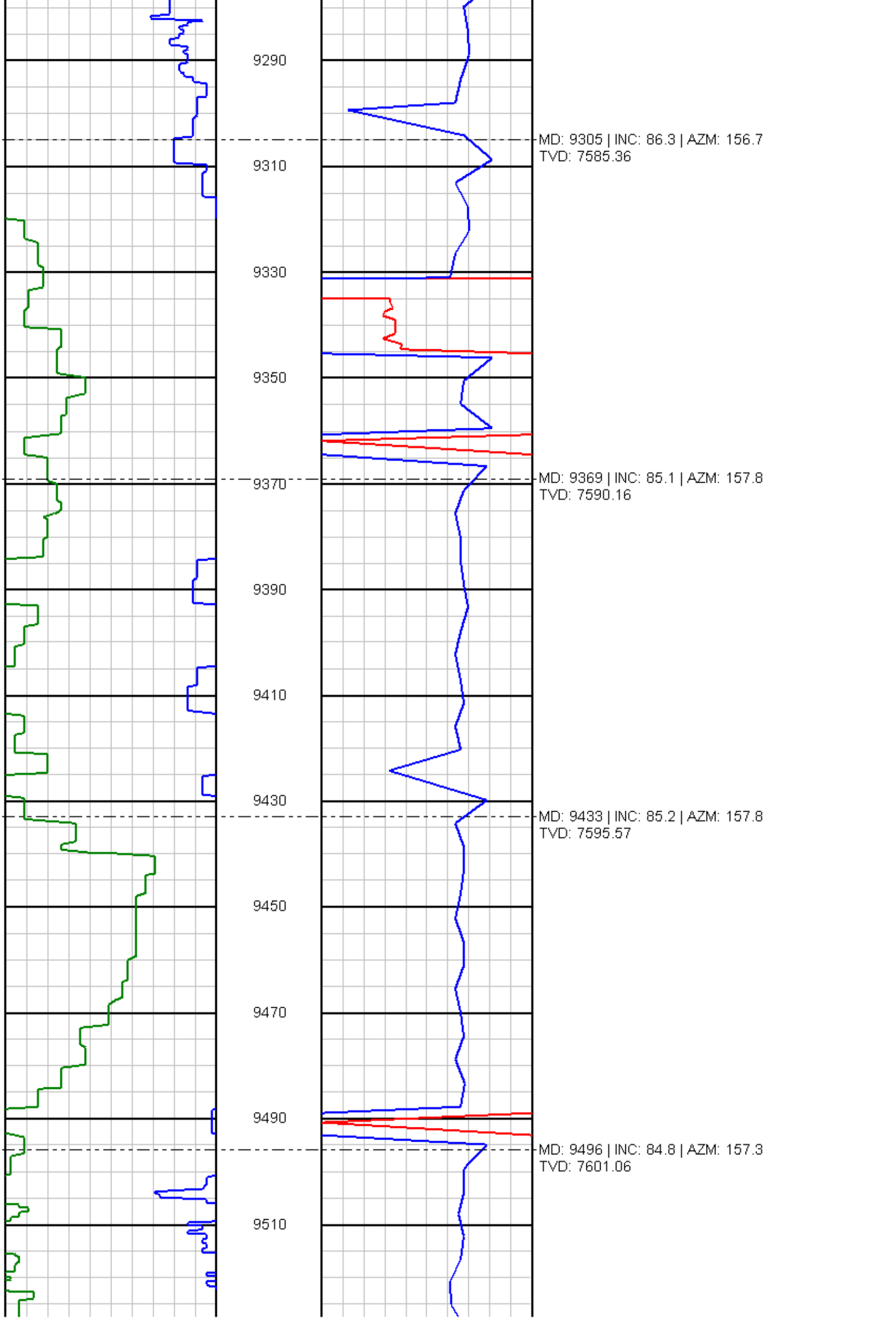
8970

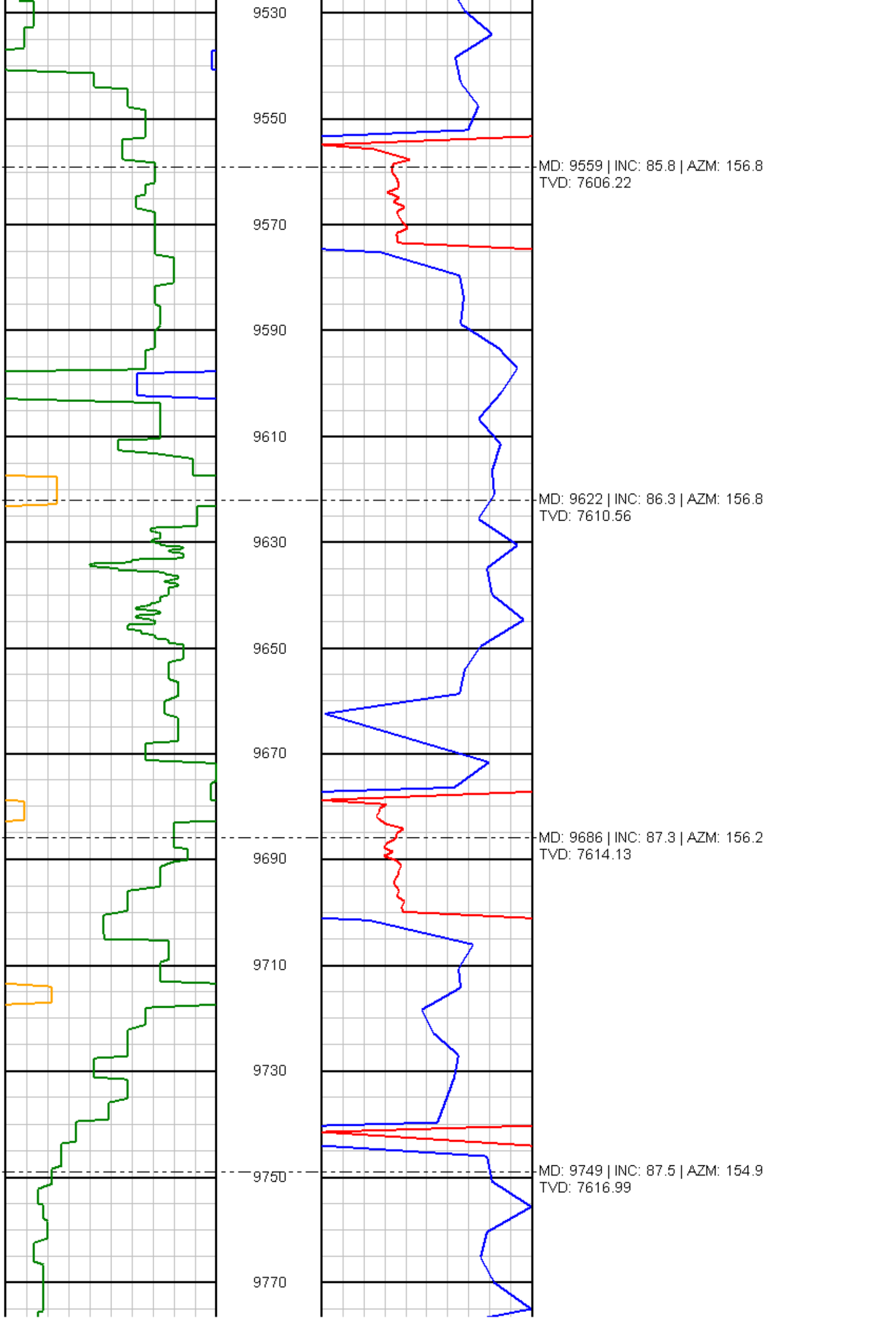
MD: 8988 | INC: 86.3 | AZM: 158
TVD: 7569.53

8990

9010







9530

9550

MD: 9559 | INC: 85.8 | AZM: 156.8
TVD: 7606.22

9570

9590

9610

MD: 9622 | INC: 86.3 | AZM: 156.8
TVD: 7610.56

9630

9650

9670

MD: 9686 | INC: 87.3 | AZM: 156.2
TVD: 7614.13

9690

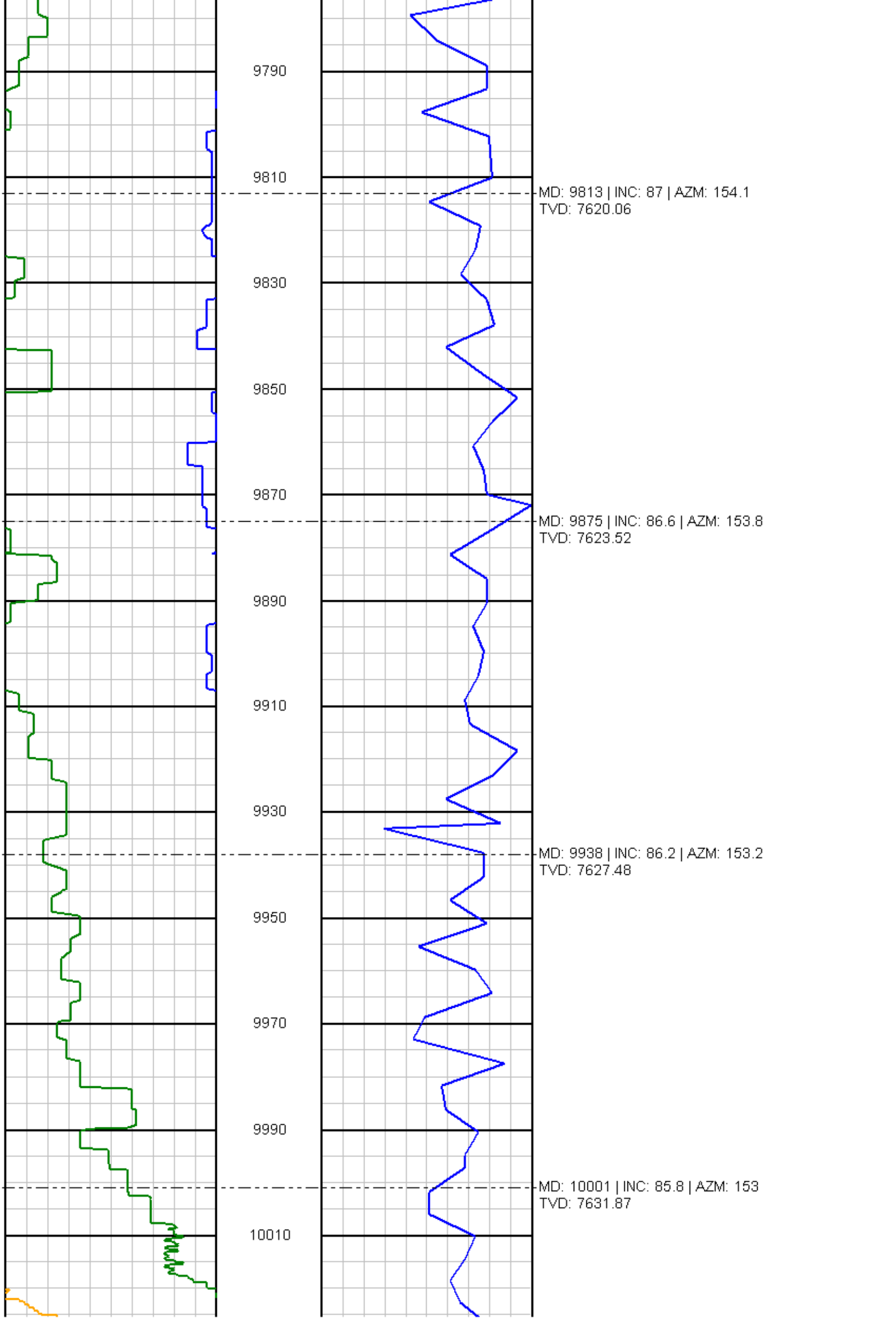
9710

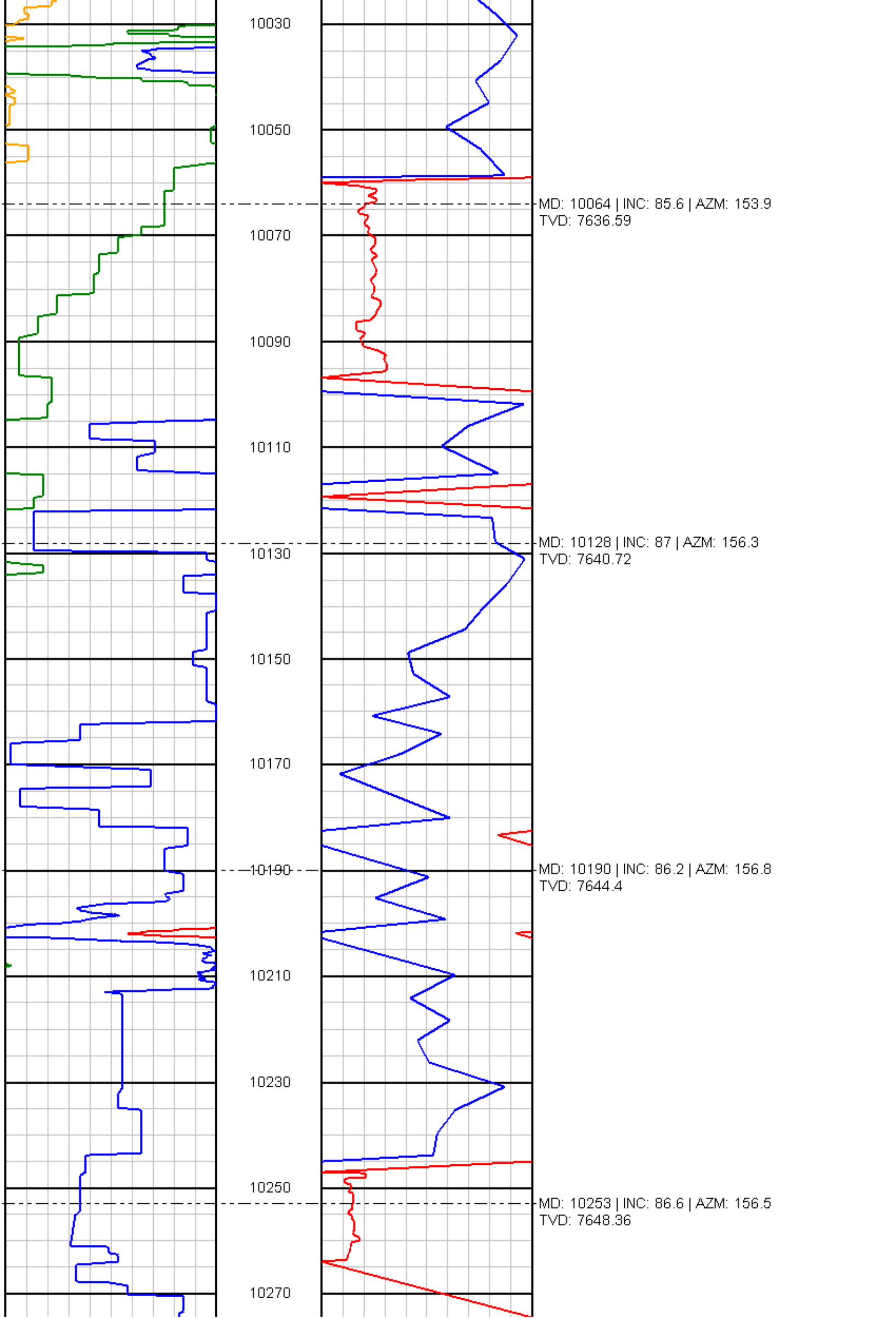
9730

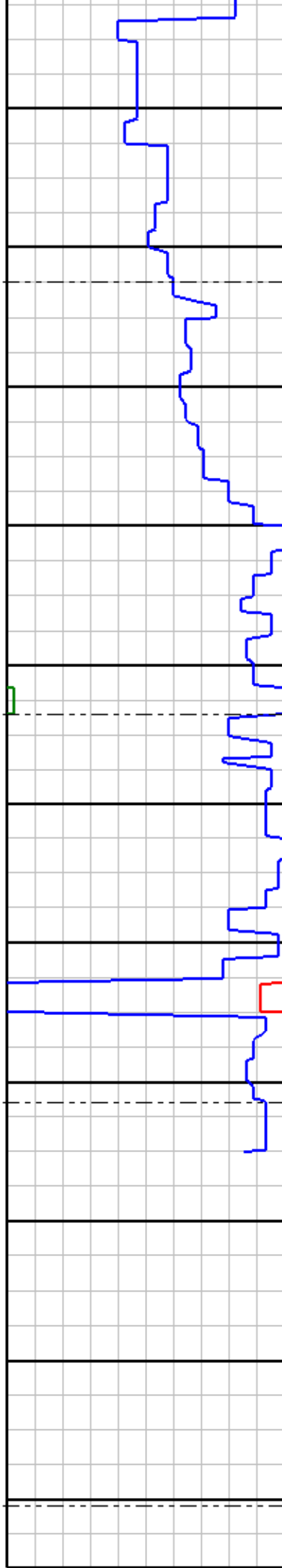
MD: 9749 | INC: 87.5 | AZM: 154.9
TVD: 7616.99

9750

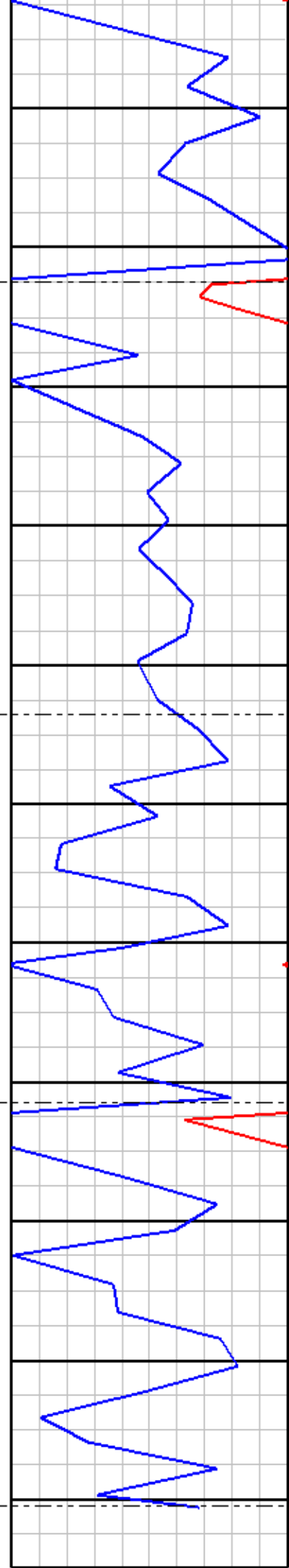
9770







10290
10310
10330
10350
10370
10390
10410
10430
10450
10470
10490



MD: 10315 | INC: 88.3 | AZM: 156.8
TVD: 7651.12

MD: 10377 | INC: 87.9 | AZM: 156.2
TVD: 7653.18

MD: 10433 | INC: 87.3 | AZM: 156.9
TVD: 7655.53

MD: 10491 | INC: 87.3 | AZM: 156.9
TVD: 7658.26