



PHOENIX TECHNOLOGY SERVICES

MID
1:240
Feet

Client: FOT
Well Name: 511400
Country: Taylor

MWD Gamma

Unique ID/API: 47-9101229

Company Representative

Surface Location: Taylor

Bill Teel

Country: USA

State: W. V.

Geologist

Dane Fisher

Rig Name: Savannah 640E

Latitude: 39° 19' 18.724N

Longitude: 80° 8' 28.535W

License/Permit#: 01229

Directional Drillers

Job No: 1130371

Permanent Datum: MEANSEA

Mark Davis
Toby Barrick

Drilling Measurement From: Drill Floor

GL: 1328 **Feet**

KB: 15.48 **Feet**

Spud Date: -

MWD Operator

Print Date: July 14, 2011

Bob Dillon

Log Start Depth: 6820 **Feet**

Justin Lee

Log End Depth: 10500 **Feet**

Bottom Hole Temp: NA °F

Leg Name

Main Leg

Comments:

PHOENIX TECHNOLOGY SERVICES LP (PHOENIX) DOES NOT MAKE AND EXPRESSLY DISCLAIMS ALL WARRANTIES, REPRESENTATIONS AND CONDITIONS, WITH RESPECT TO THE INFORMATION CONTAINED IN THIS DOCUMENT, WHETHER ORAL OR WRITTEN, EXPRESS OR IMPLIED OR ARISING FROM CONTRACT OR STATUTE INCLUDING, WITHOUT LIMITATION, THE IMPLIED WARRANTIES OF MERCHANTABILITY, ACCURACY AND FITNESS FOR A PARTICULAR PURPOSE. ANYONE USING THIS INFORMATION DOES SO AT THEIR OWN RISK AND ACKNOWLEDGES AND AGREES THAT PHOENIX SHALL NOT BE LIABLE FOR ANY ERROR, OMISSION, DEFECT, DELAY OR INCONVENIENCE IN THE INFORMATION AND WITHOUT LIMITING THE FOREGOING, PHOENIX DOES NOT WARRANT THAT THE INFORMATION OR THE USE THEREOF WILL BE FREE OF ALL ERRORS OR THAT IT DOES NOT INFRINGE ANY THIRD PARTY RIGHTS. ANYONE USING THE INFORMATION AGREES TO INDEMNIFY AND HOLD PHOENIX HARMLESS FROM ALL CLAIMS, ACTIONS, COSTS (INCLUDING LEGAL COSTS) OR A SOLUTION AND HIS/OWN CLIENT BASIS, AND LIABILITIES ARISING FROM OR IN CONNECTION WITH THE USE OF THE INFORMATION.

| BitRun: | 1 | 2 |
|--------------------------|------------|---------------------------|
| Start Depth (ft): | 6879 | 7942 |
| End Depth (ft): | 7942 | 10495.54 |
| Start Date: | | 2011.07/11 |
| End Date: | 2011.07/11 | 2011.07/14 |
| Gamma Scale Factor: | 3.530 | 3.530 |
| Stoney-b-Bit (PTB): | 54 | 54 |
| Gamma-b-Bit (GTB): | 49 | 49 |
| Tool Carrier ID (ft): | 2.75 | 2.75 |
| Tool Carrier OD (ft): | 5.00 | 5.00 |
| Hole Size (ft): | 8.5 | 8.5 |
| Casing Size (ft): | 9.625 | 9.625 |
| Casing Start Depth (ft): | 0 | 0 |
| Casing End Depth (ft): | 2629 | 2629 |
| Mid Type: | well base | well base |
| Mid Weight (lb/gal): | 12.3 | 12.3 |
| Mid Viscosity: | 45 | 45 |
| KCL Correction Factor: | 0.000 | 0.000 |
| Mid KCL Content (%): | 0.001 | 0.001 |
| Comment: | - | -pick up lateral assembly |

| BitRun: | | |
|--------------------------|--|--|
| Start Depth (ft): | | |
| End Depth (ft): | | |
| Start Date: | | |
| End Date: | | |
| Gamma Scale Factor: | | |
| Stoney-b-Bit (PTB): | | |
| Gamma-b-Bit (GTB): | | |
| Tool Carrier ID (ft): | | |
| Tool Carrier OD (ft): | | |
| Hole Size (ft): | | |
| Casing Size (ft): | | |
| Casing Start Depth (ft): | | |
| Casing End Depth (ft): | | |
| Mid Type: | | |
| Mid Weight (lb/gal): | | |
| Mid Viscosity: | | |
| KCL Correction Factor: | | |
| Mid KCL Content (%): | | |
| Comment: | | |



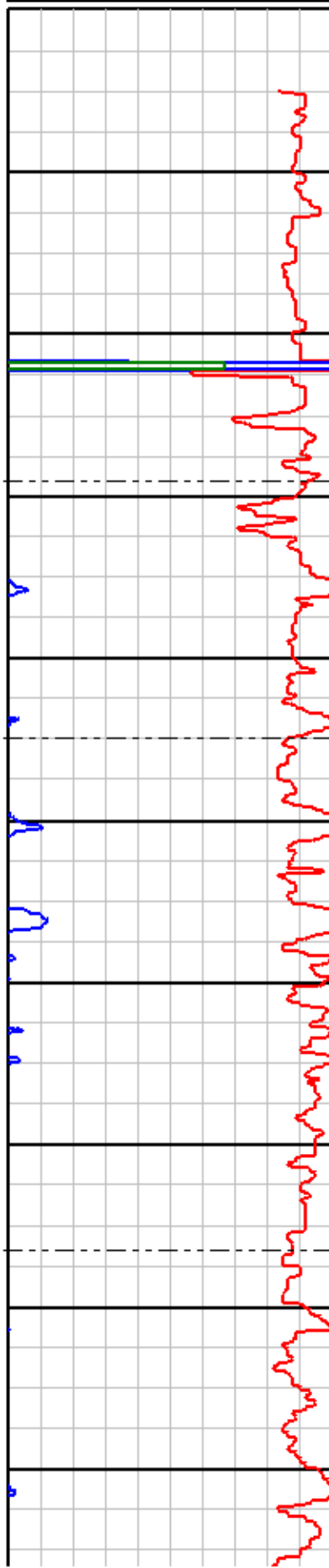
PHOENIX TECHNOLOGY SERVICES

| | | |
|-----|-------------|------|
| 0 | Gamma (API) | 250 |
| 250 | Gamma (API) | 500 |
| 500 | Gamma (API) | 750 |
| 750 | Gamma (API) | 1000 |

1:240ft

MD

| | | |
|-----|-------------|-----|
| 0 | ROP (ft/hr) | 150 |
| 150 | ROP (ft/hr) | 300 |



6820

6840

6860

6880

6900

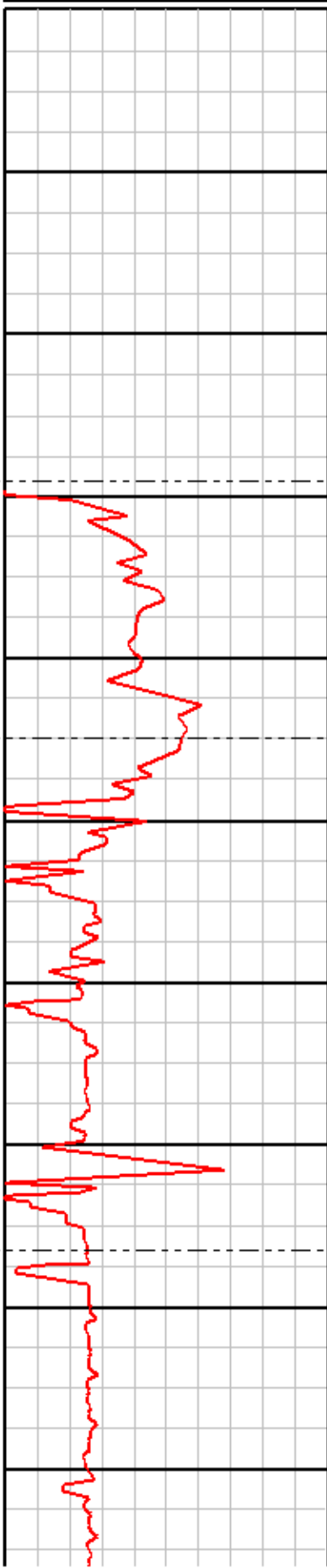
6920

6940

6960

6980

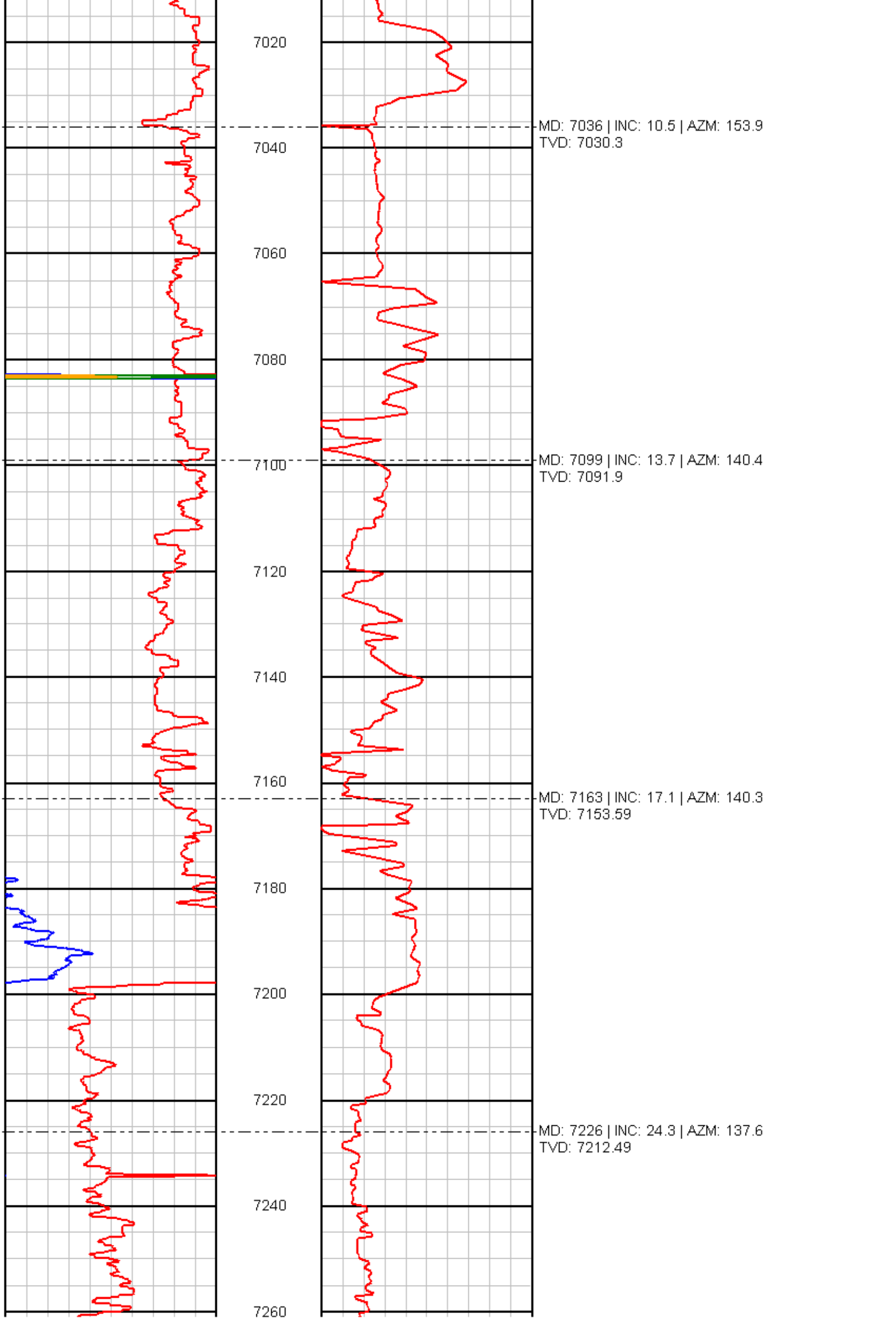
7000

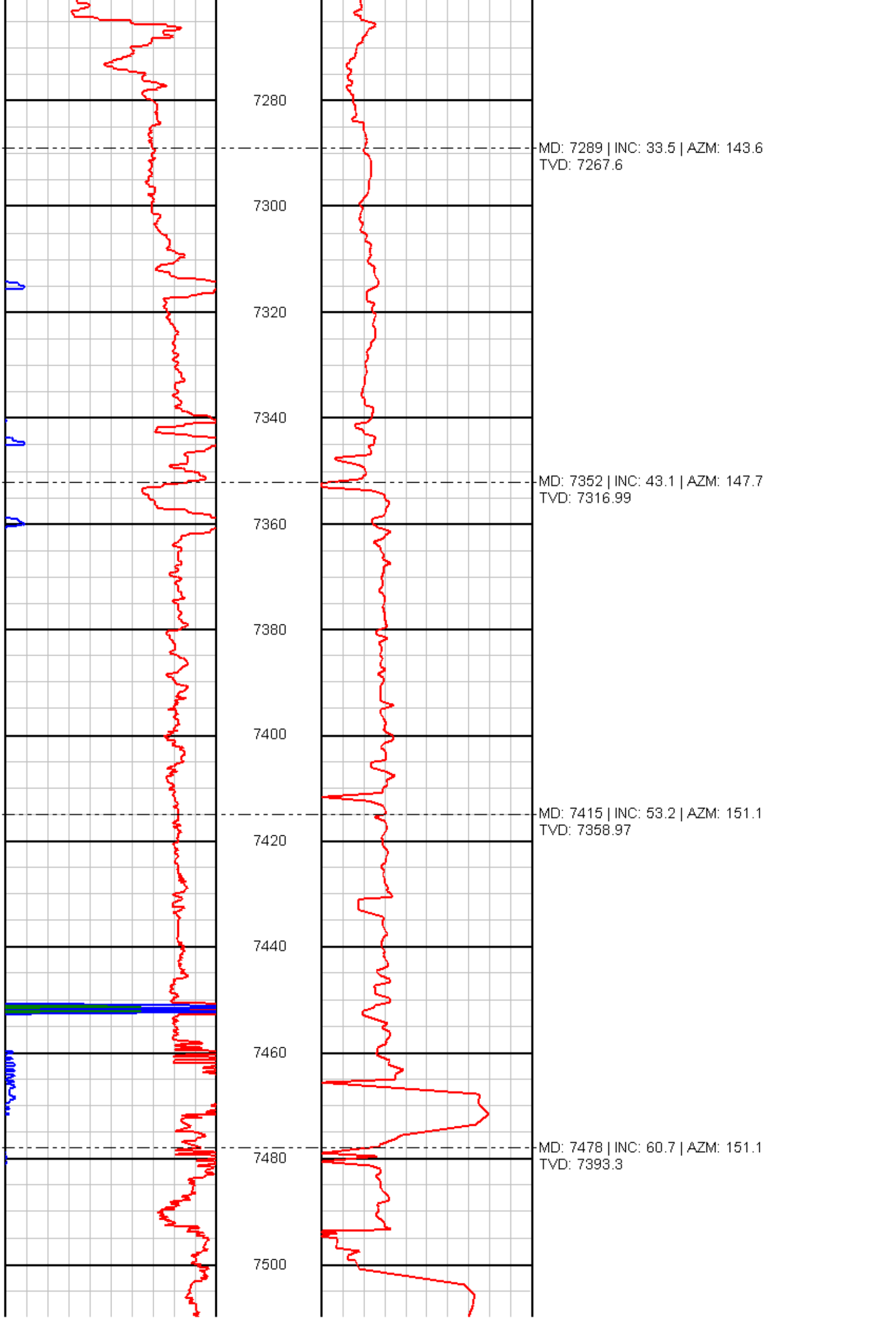


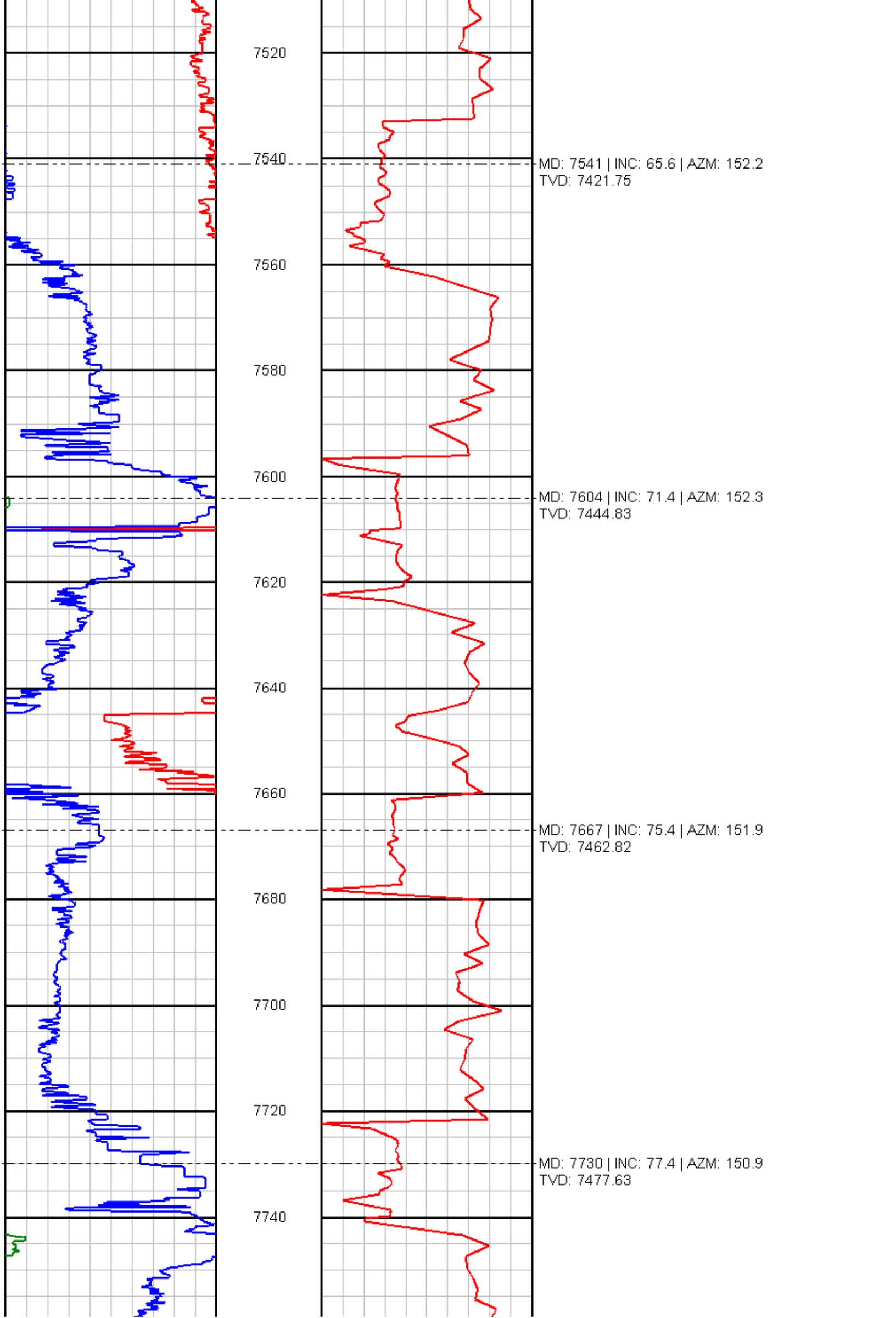
MD: 6878
INC: 2.3
AZM: 321.7
TVD: 6872.83

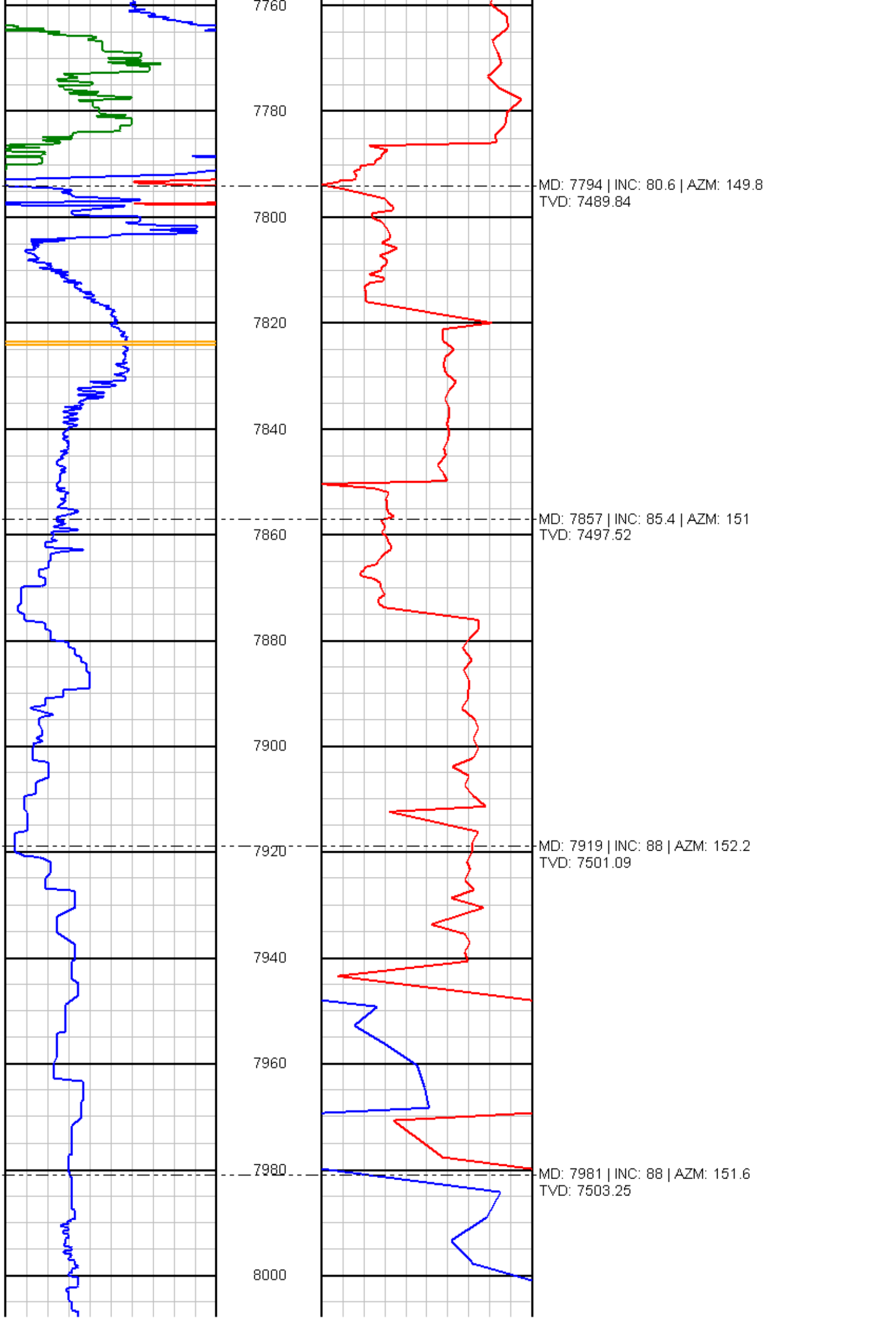
MD: 6910
INC: 2.6
AZM: 321.9
TVD: 6904.8

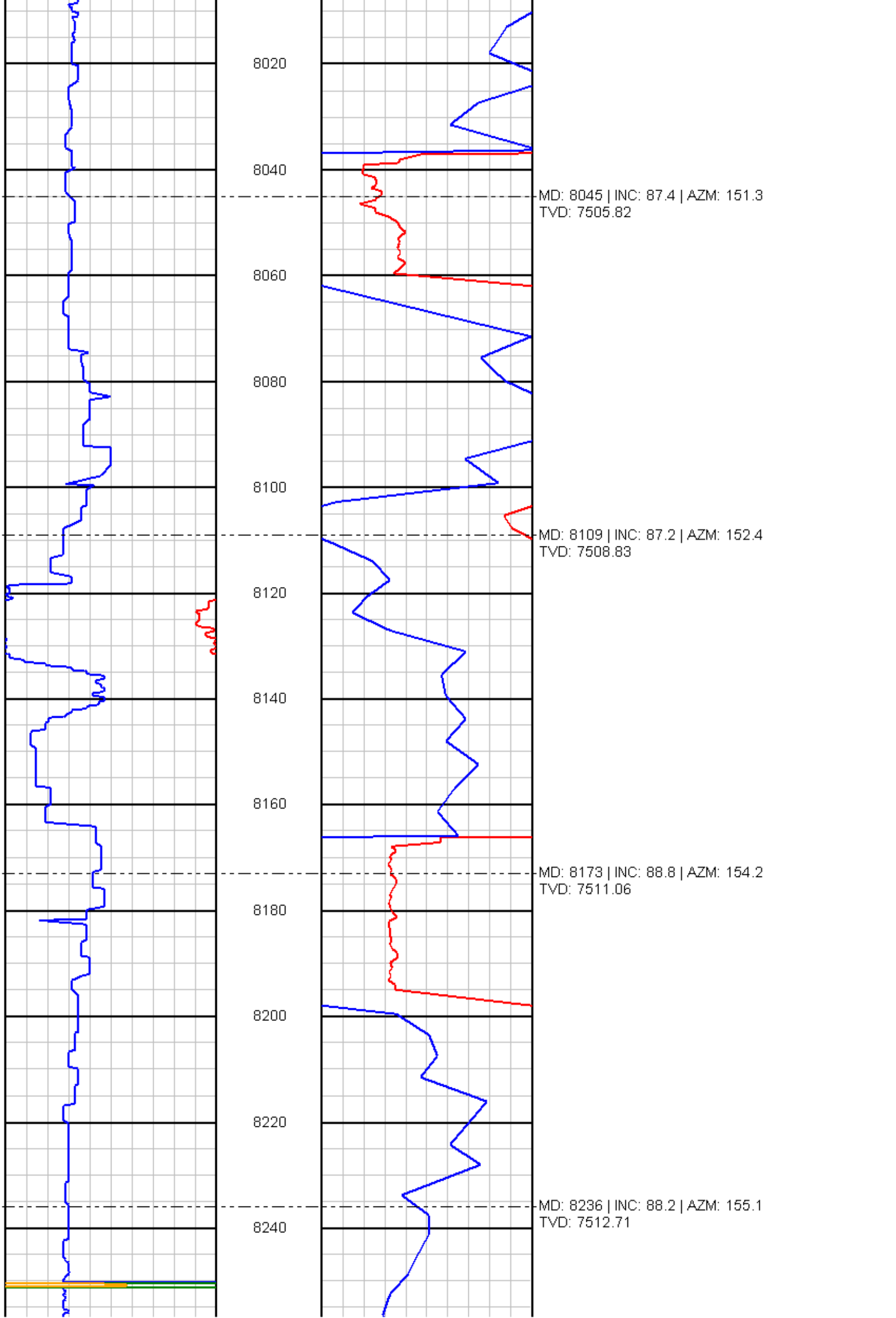
MD: 6973 | INC: 2.9 | AZM: 174.2
TVD: 6967.77

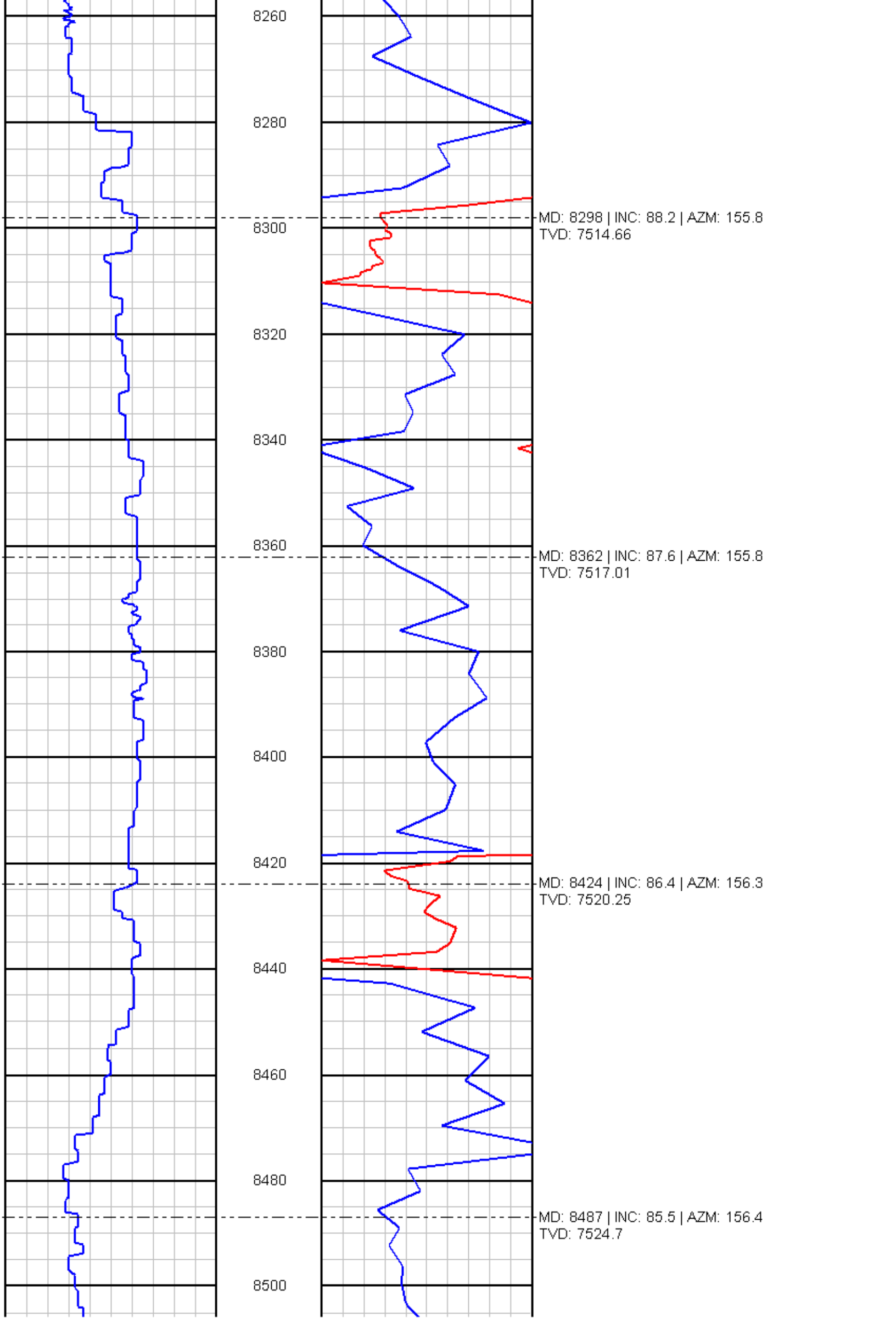


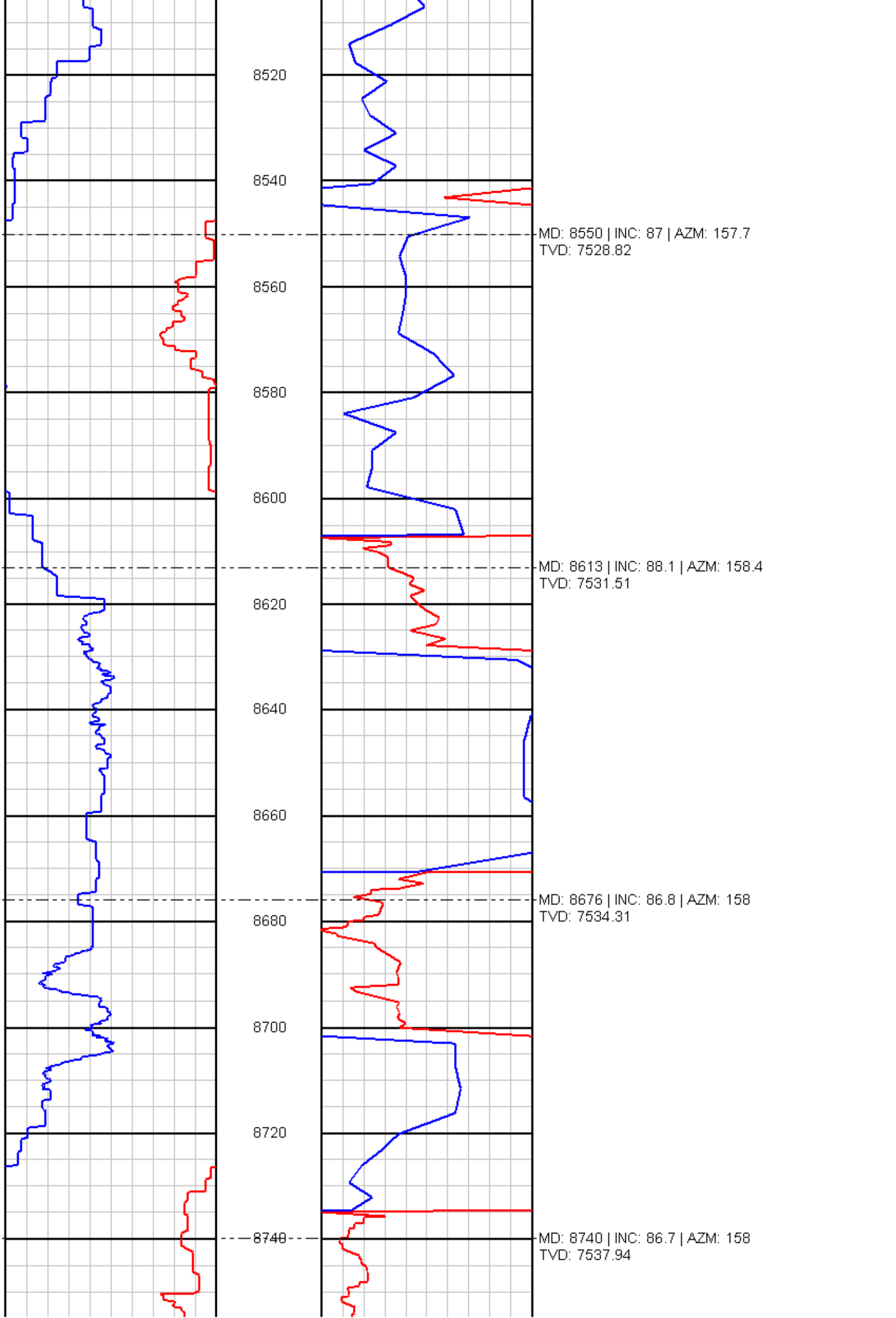


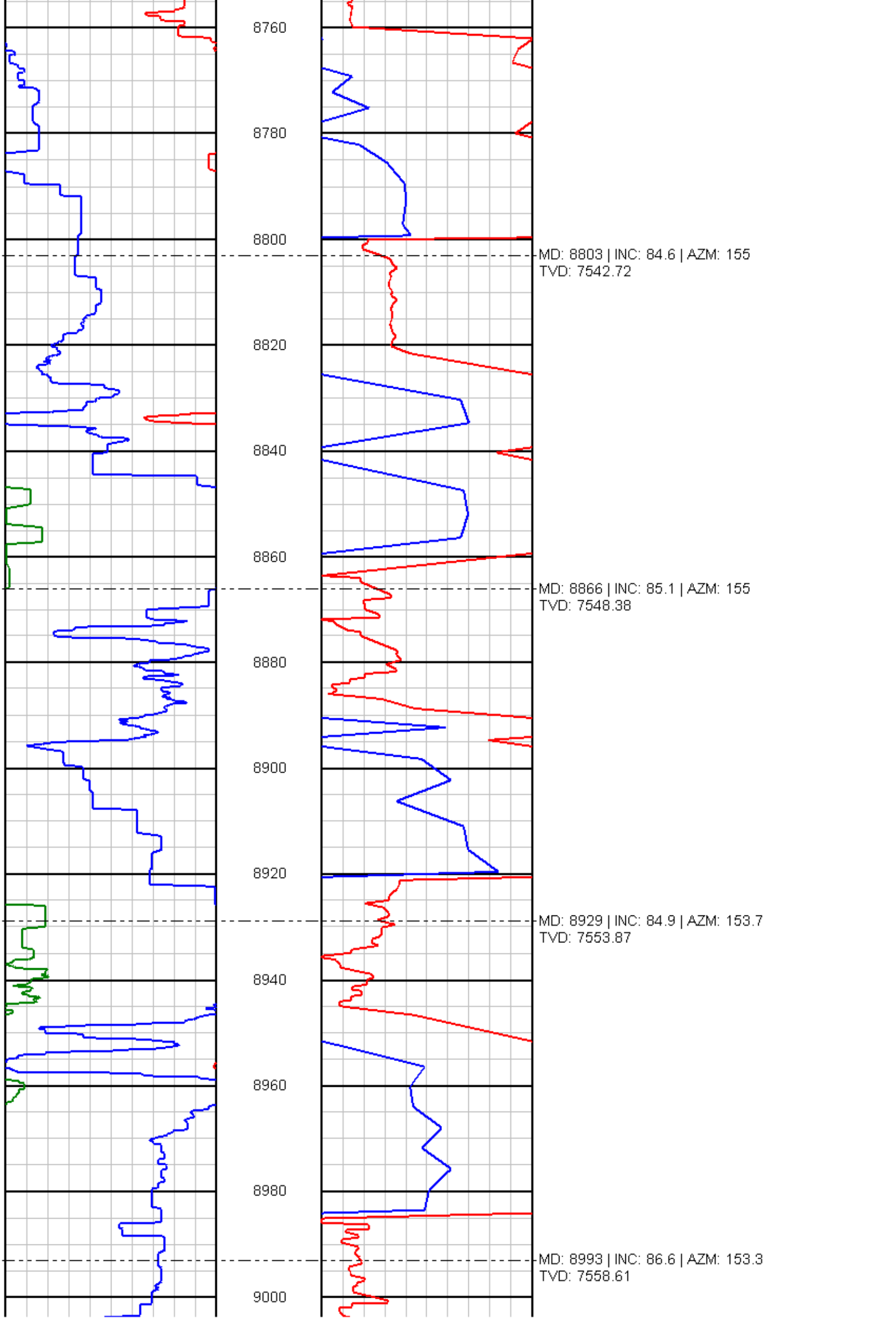












8760

8780

8800

MD: 8803 | INC: 84.6 | AZM: 155
TVD: 7542.72

8820

8840

8860

MD: 8866 | INC: 85.1 | AZM: 155
TVD: 7548.38

8880

8900

8920

MD: 8929 | INC: 84.9 | AZM: 153.7
TVD: 7553.87

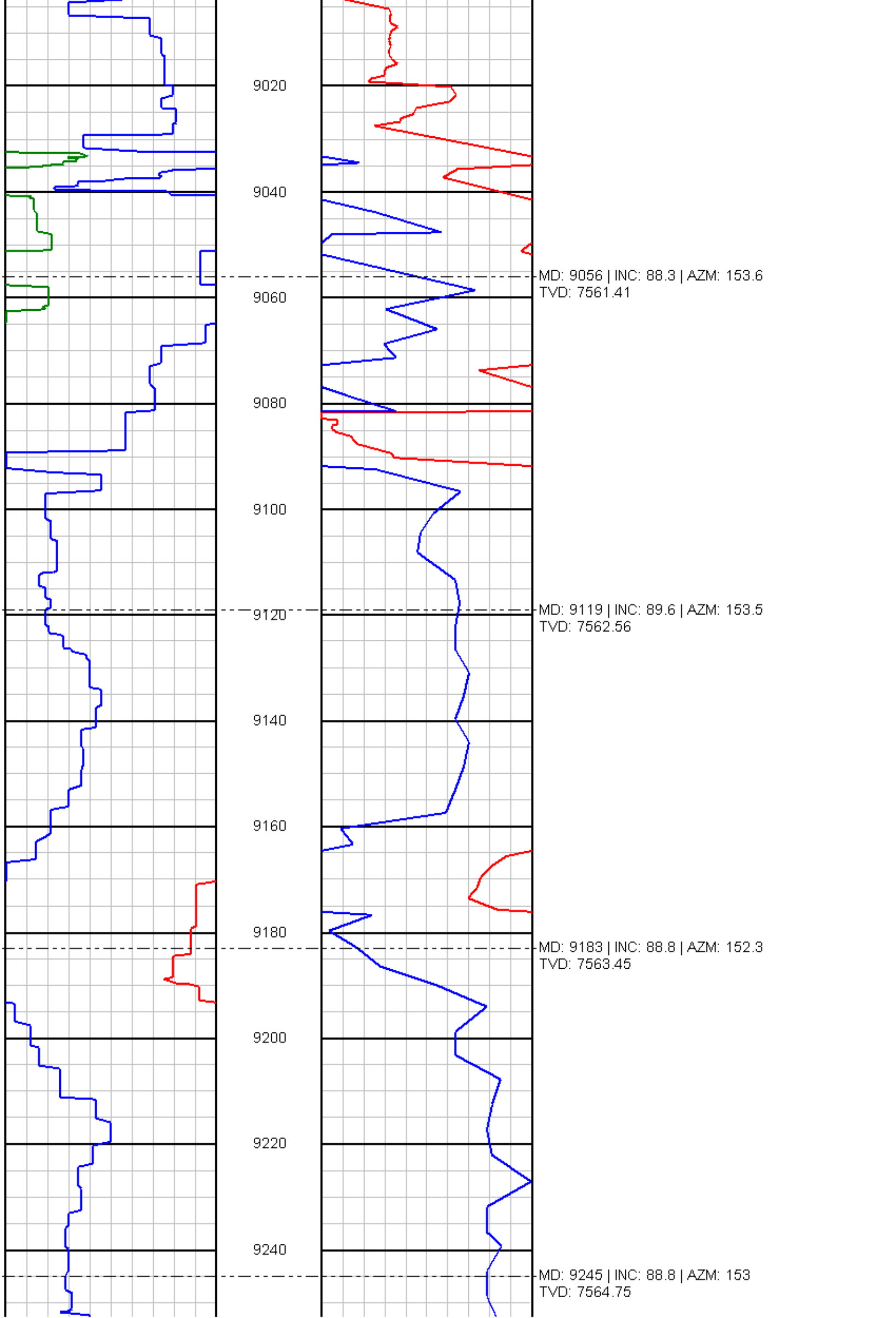
8940

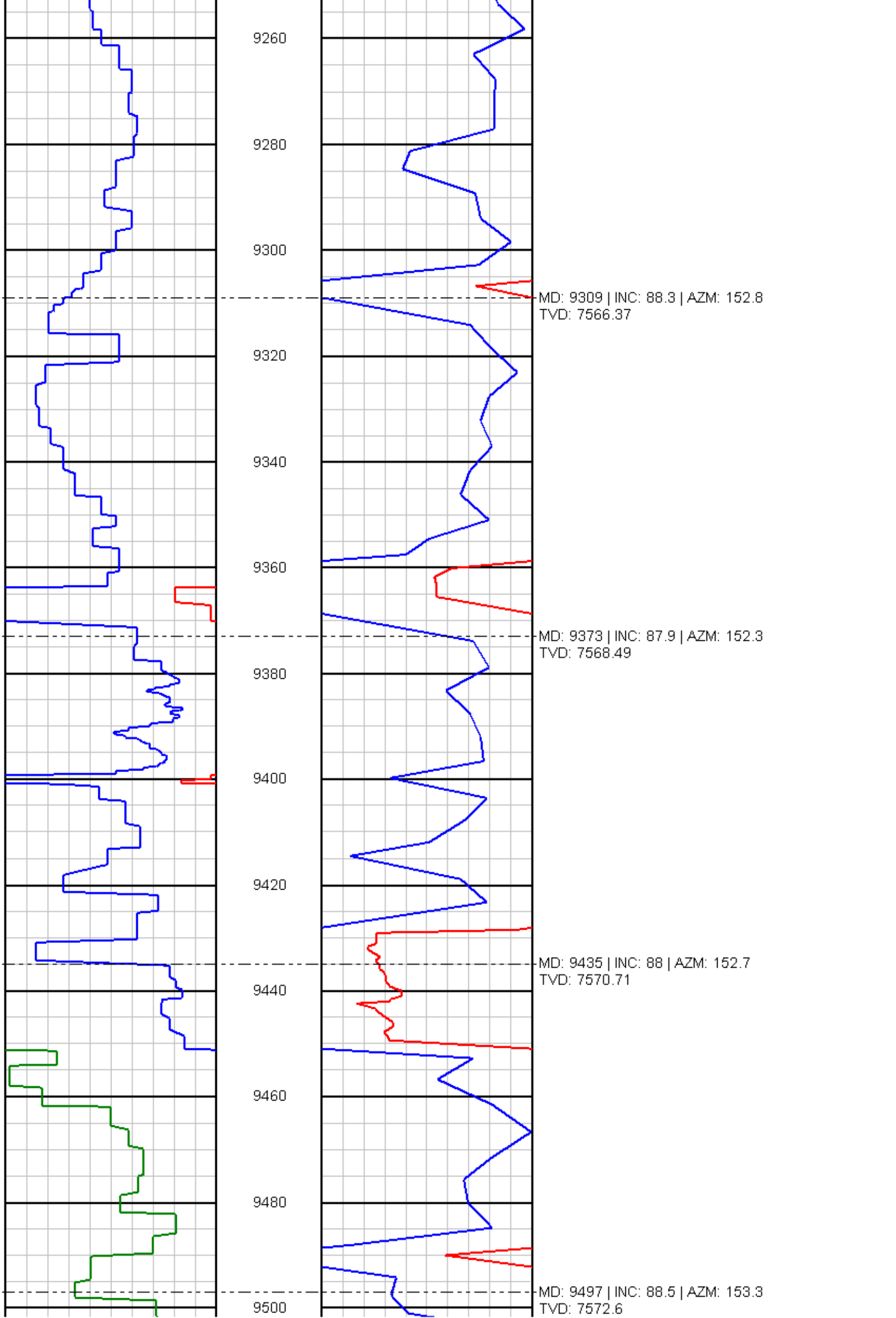
8960

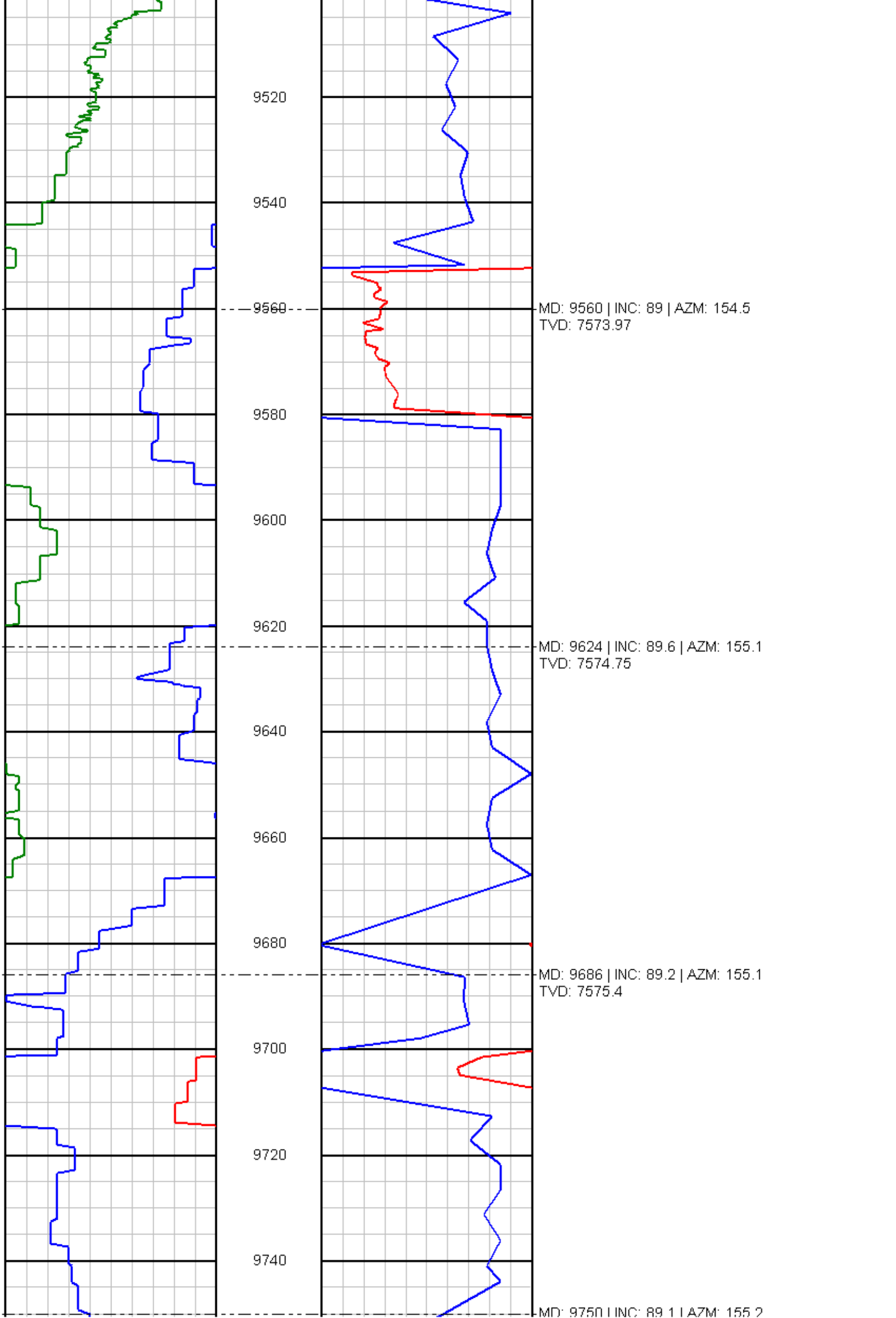
8980

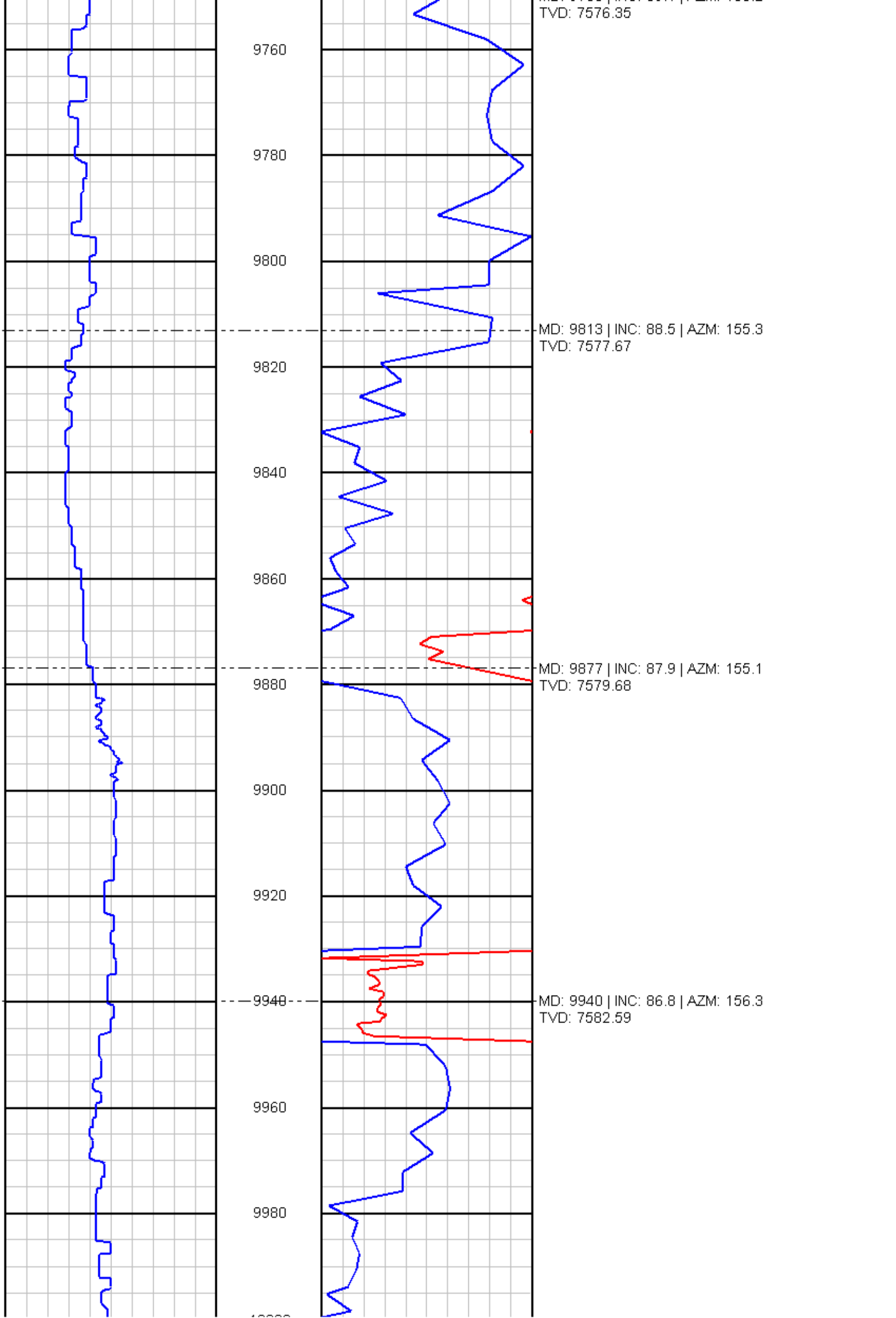
MD: 8993 | INC: 86.6 | AZM: 153.3
TVD: 7558.61

9000









TVD: 7576.35

9760

9780

9800

MD: 9813 | INC: 88.5 | AZM: 155.3
TVD: 7577.67

9820

9840

9860

MD: 9877 | INC: 87.9 | AZM: 155.1
TVD: 7579.68

9880

9900

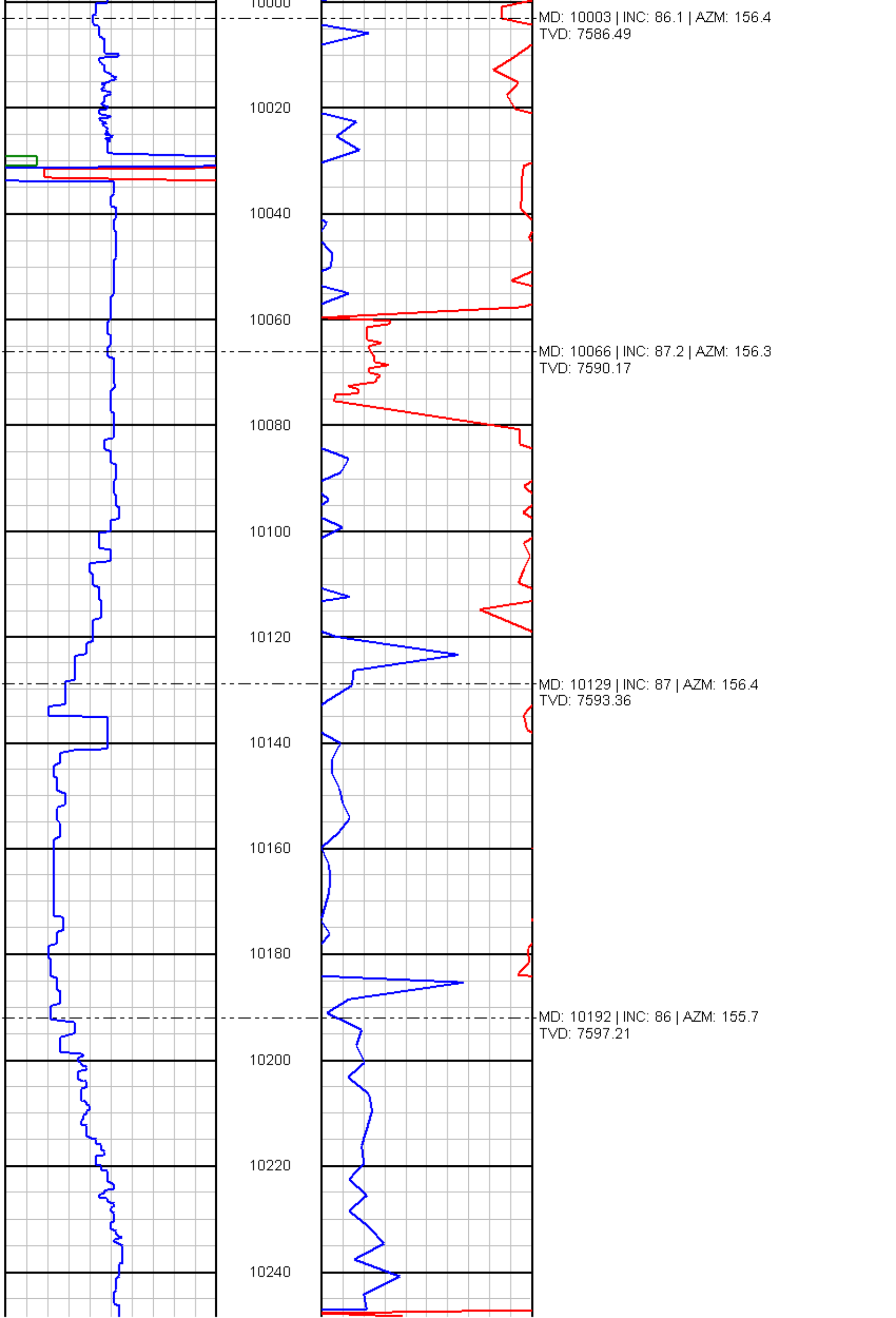
9920

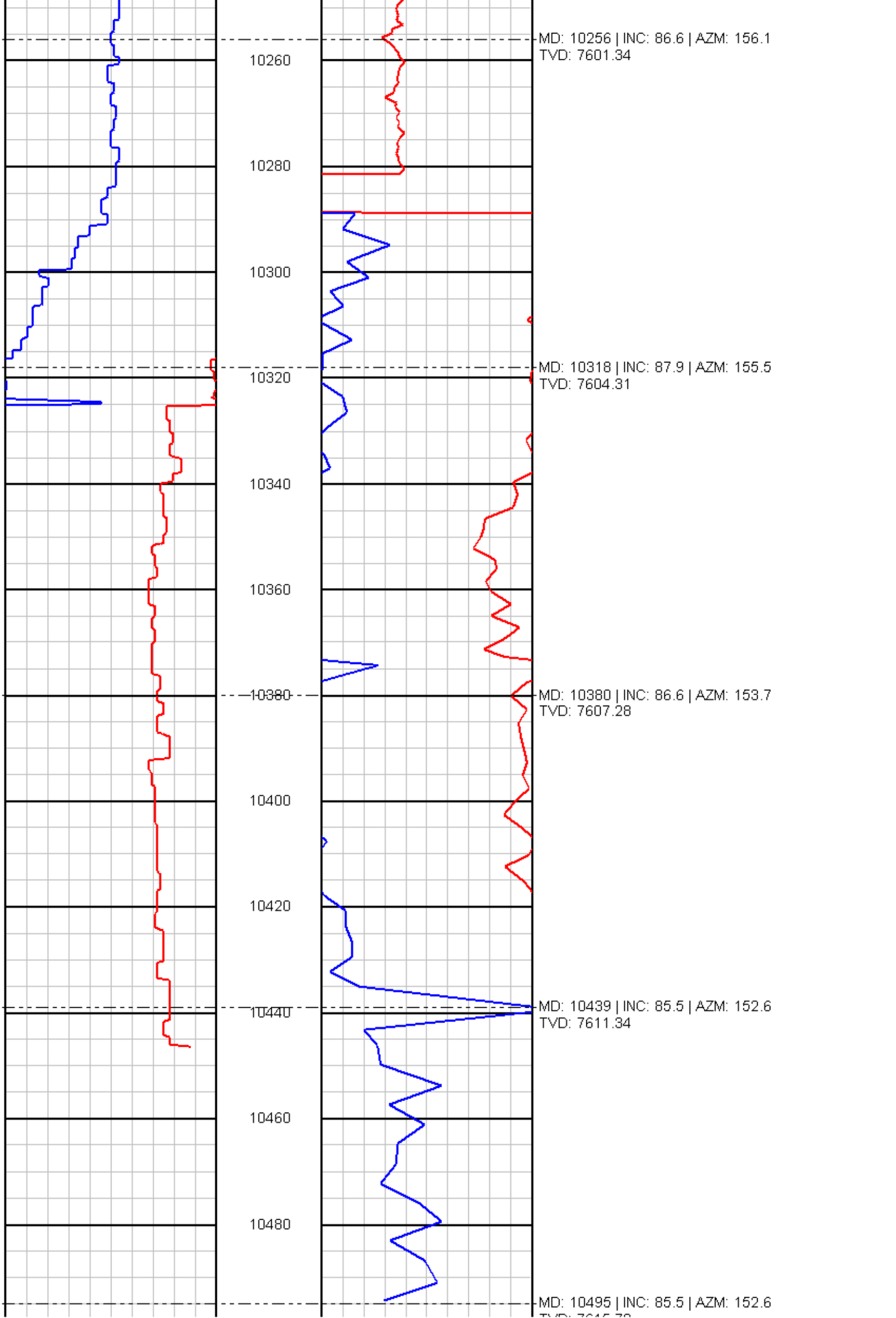
MD: 9940 | INC: 86.8 | AZM: 156.3
TVD: 7582.59

9940

9960

9980







10500



TVD. 7615.73