



PHOENIX TECHNOLOGY SERVICES

MID
1:240
Feet

Client: FOT
Well Name: 513054
County: Taylor

MWD Gamma / ROP

Unique ID/API: 47-910-1226

Company Representative

Surface Location: Taylor County, WV

Larry Frost

Country: US

State: West Virginia

Rig Name: Patterson 622

Geologist

Latitude: 39° 17' 30.775 N

Kevin Wolfe

Longitude: 80° 9' 10.667 W

License/Permit#: 1226

Directional Drillers

Job No: 1130348

Cody Barrick

Permanent Datum: Mean Sea Level

Matt LaFreniere

Drilling Measurement From: Drill Floor

GL: 1420 Feet

KB: 1443 Feet

Spud Date: 17/06/2011

Print Date: June 28, 2011

Log Start Depth: 6640 Feet

Shawn Agren

Log End Depth: 12040 Feet

Noel Parker

Bottom Hole Temp: 181.4 °F

MWD Operator

Leg Name
Main Leg

Comments:

PHOENIX TECHNOLOGY SERVICES LP (PHOENIX) DOES NOT MAKE AND EXPRESSLY DISCLAIMS ALL WARRANTIES, REPRESENTATIONS AND CONDITIONS, WITH RESPECT TO THE INFORMATION CONTAINED IN THIS DOCUMENT, WHETHER ORAL OR WRITTEN, EXPRESS OR IMPLIED OR ARISING FROM CONTRACT OR STATUTE INCLUDING, WITHOUT LIMITATION, THE IMPLIED WARRANTIES OF MERCHANTABILITY, ACCURACY AND FITNESS FOR A PARTICULAR PURPOSE. ANYONE USING THIS INFORMATION DOES SO AT THEIR OWN RISK AND ACKNOWLEDGES AND AGREES THAT PHOENIX SHALL NOT BE LIABLE FOR ANY ERROR, OMISSION, DEFECT, DELAY, OR NON-COMPLIANCE IN THE INFORMATION AND WITHOUT LIMITING THE FOREGOING, PHOENIX DOES NOT WARRANT THAT THE INFORMATION OR THE USE THEREOF WILL BE FREE OF ALL ERRORS OR THAT IT DOES NOT INFRINGE ANY THIRD PARTY RIGHTS. ANYONE USING THE INFORMATION AGREES TO INDEMNIFY AND HOLD PHOENIX HARMLESS FROM ALL CLAIMS, ACTIONS, COSTS, INCLUDING LEGAL COSTS ON A SOLIDUM AND REASONABLE CLIENT BASIS, AND LIABILITIES ARISING FROM OR IN CONNECTION WITH THE USE OF THE INFORMATION.

BitRun:	1	2
Start Depth (ft):	6640	8362
End Depth (ft):	8366	12037
Start Date:		2011.05.25
End Date:	2011.05.25	2011.05.28
Gamma Scale Factor:	4.705	5.000
Stoney-b-Bit (PTB):	53	43
Gamma-b-Bit (GTB):	48	38
Tool Carrier ID (ft):	2.75	2.75
Tool Carrier OD (ft):	5	5
Hole Size (ft):	8.5	7.875
Casing Size (ft):	9.625	9.625
Casing Start Depth (ft):	0	0
Casing End Depth (ft):	2823	2823
Mud Type:	Water Based	Water Based
Mud Weight (lb/gal):	12.0	12.2
Mud Viscosity:	44	44
KCL Correction Factor:	0.003	0.003
Mud KCL Content (%):	0.001	0.001
Comment:	-	-

BitRun:		
Start Depth (ft):		
End Depth (ft):		
Start Date:		
End Date:		
Gamma Scale Factor:		
Stoney-b-Bit (PTB):		
Gamma-b-Bit (GTB):		
Tool Carrier ID (ft):		
Tool Carrier OD (ft):		
Hole Size (ft):		
Casing Size (ft):		
Casing Start Depth (ft):		
Casing End Depth (ft):		
Mud Type:		
Mud Weight (lb/gal):		
Mud Viscosity:		
KCL Correction Factor:		
Mud KCL Content (%):		
Comment:		

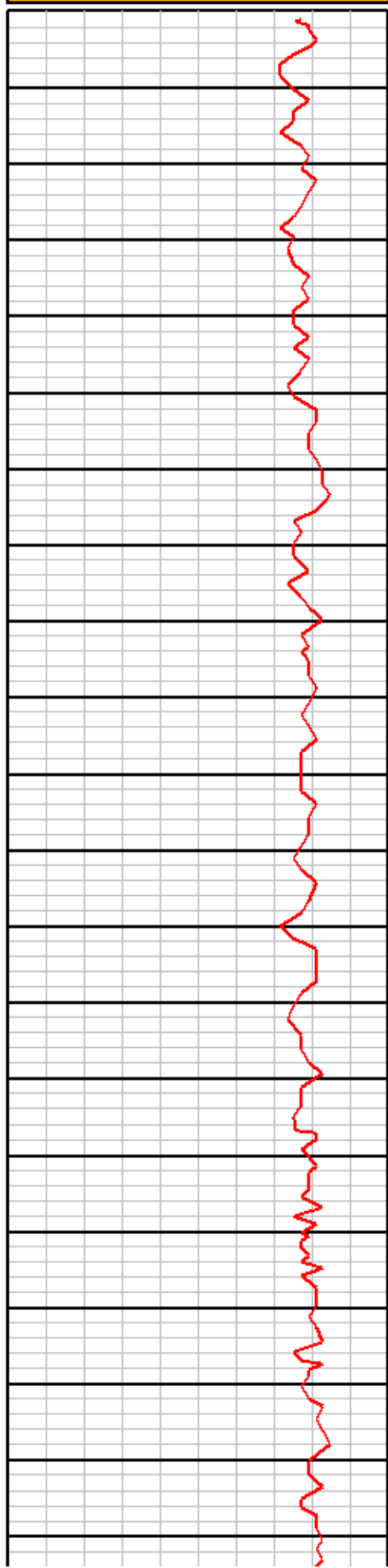


EQT
513054
Taylor
1130348

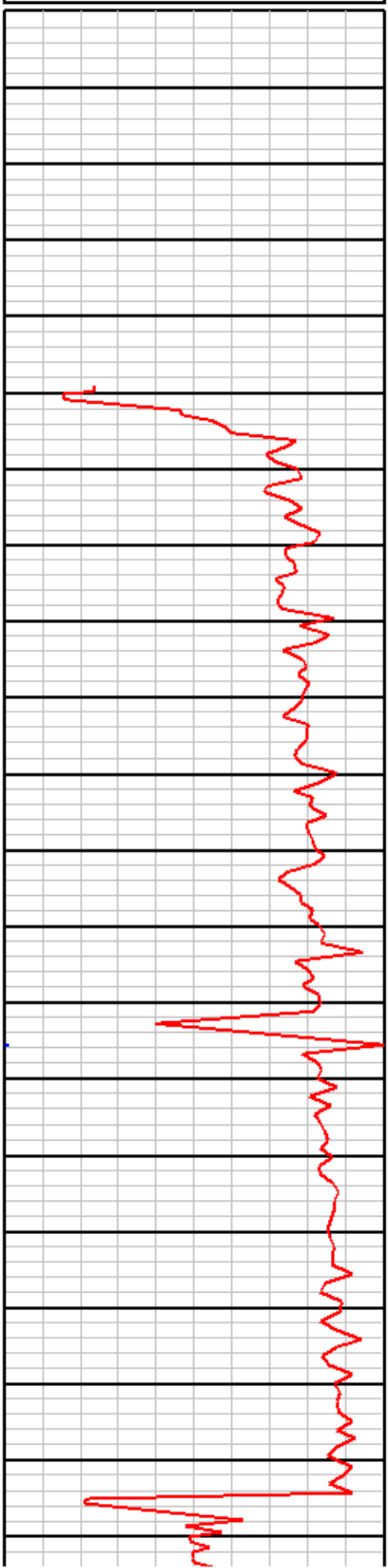
MD
1:240
Feet

0	Gamma (API)	250
250	Gamma (API)	500
500	Gamma (API)	750
750	Gamma (API)	1000

0	ROP (ft/hr)	150
150	ROP (ft/hr)	300



6640
6650
6660
6670
6680
6690
6700
6710
6720
6730
6740
6750
6760
6770
6780
6790
6800
6810
6820
6830
6840



MD: 6719
INC: 4.9
AZM: 67.1

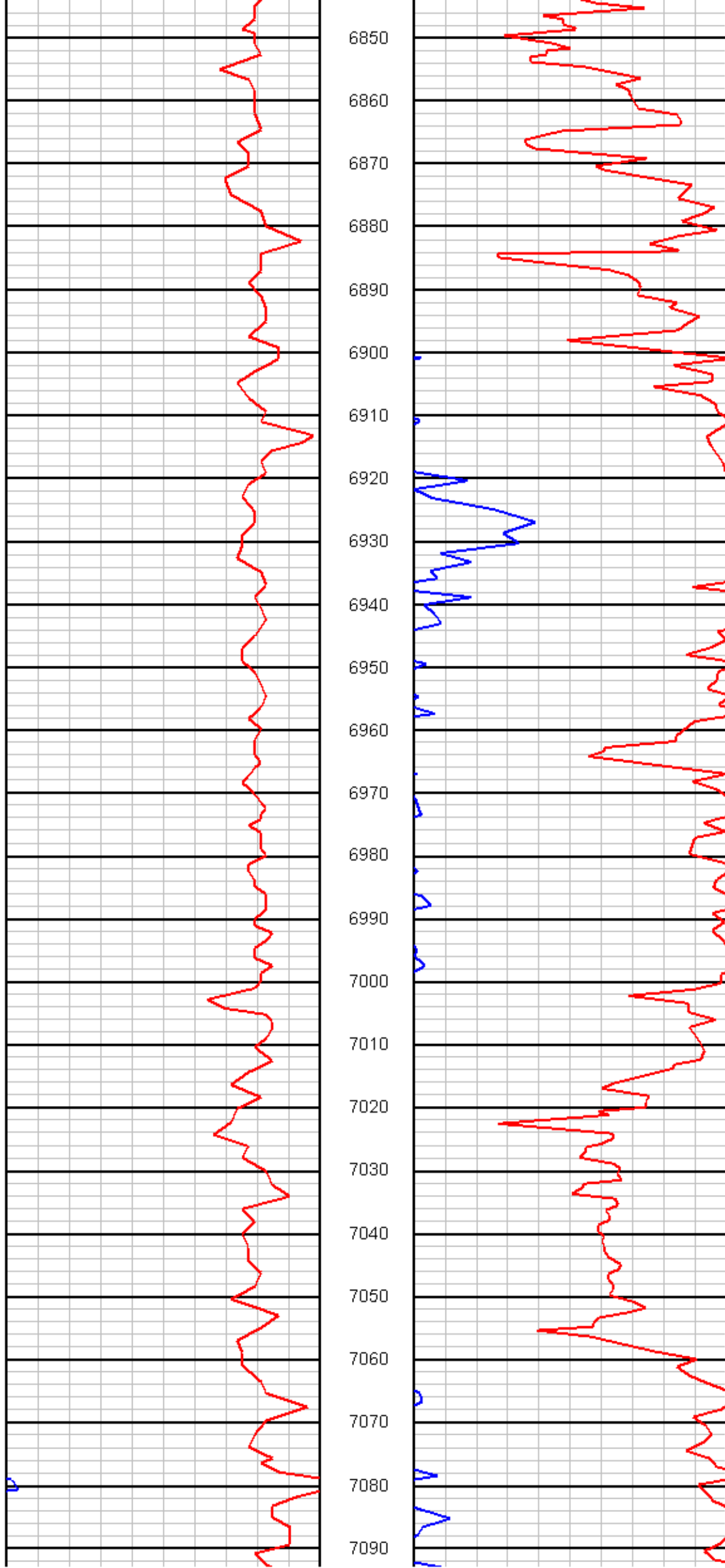
MD: 6782 | INC: 12.5 | AZM: 56.9

MD: 6813 | INC: 15.5 | AZM: 51.3

MD: 6844 | INC: 17.3 | AZM: 49.4

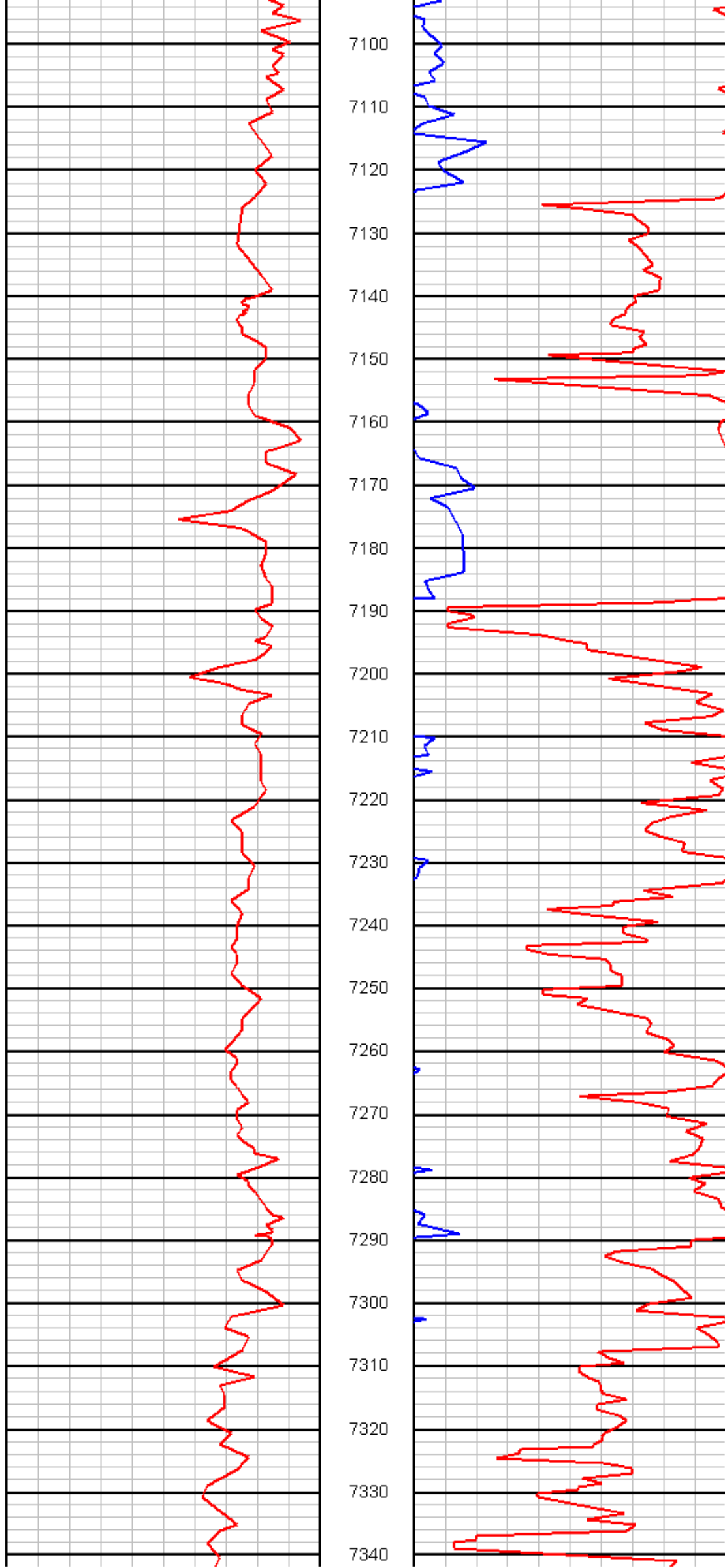


PHOENIX
TECHNOLOGY SERVICES



MD: 6907 | INC: 19.9 | AZM: 54.6

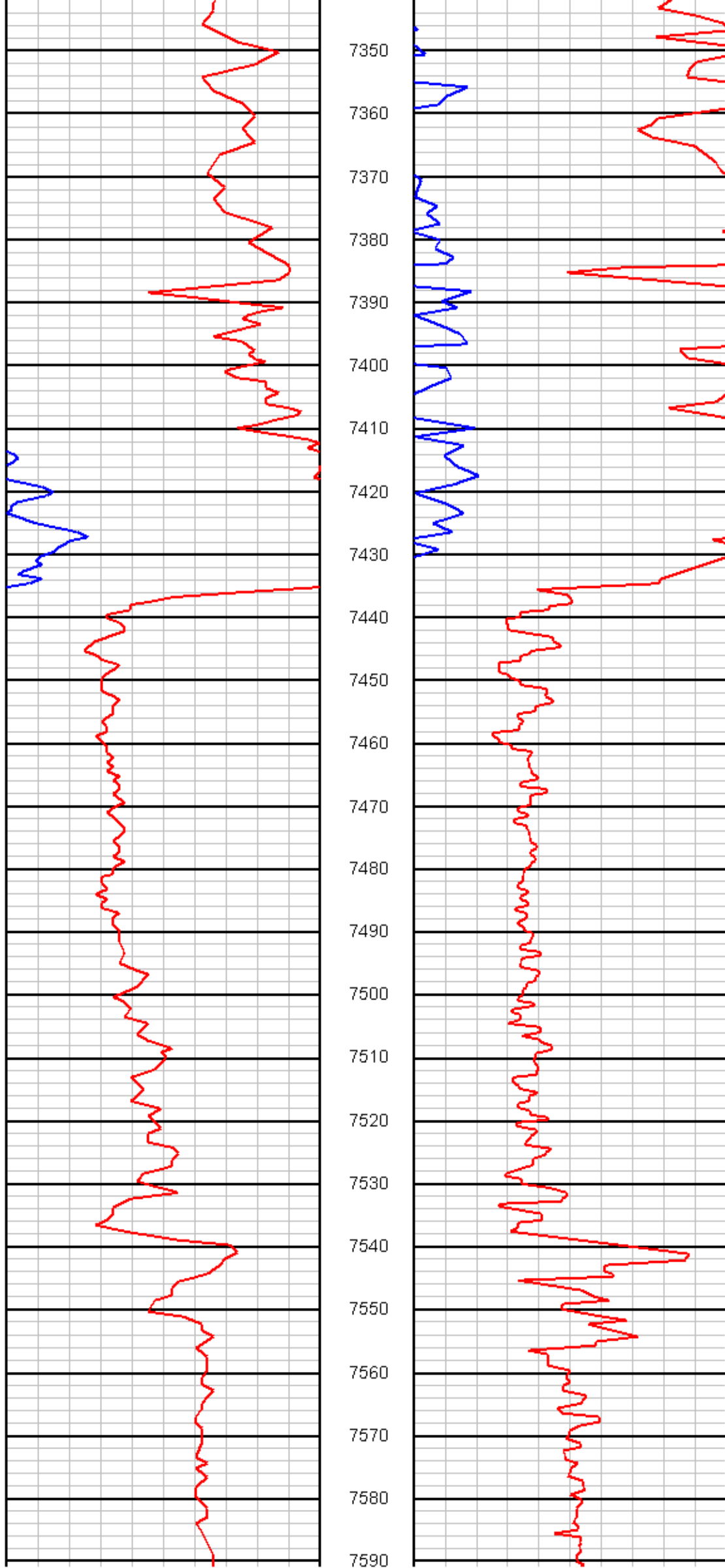
MD: 7001 | INC: 28.7 | AZM: 59.9



MD: 7096 | INC: 30 | AZM: 74.1

MD: 7191 | INC: 32.5 | AZM: 71.9

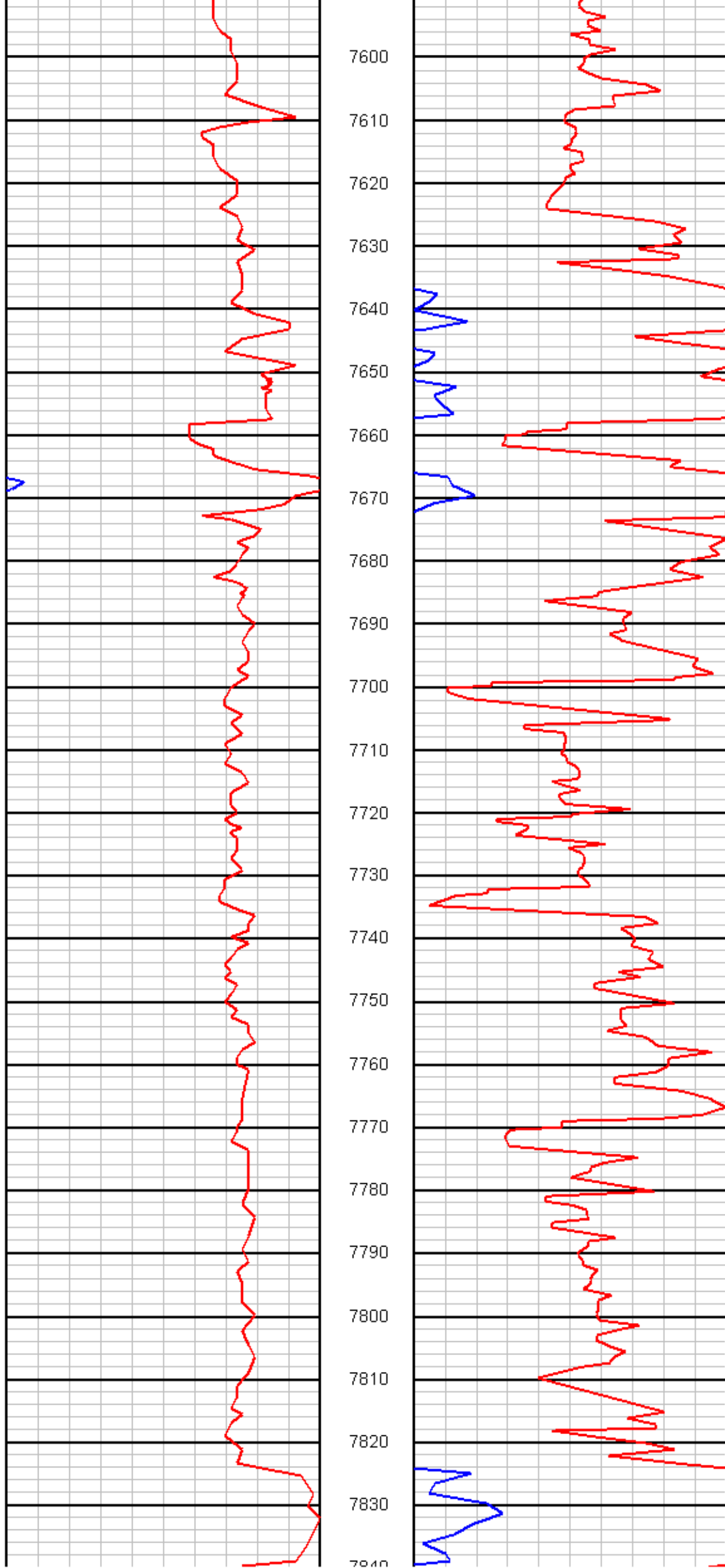
MD: 7285 | INC: 41 | AZM: 61.6



MD: 7379 | INC: 52 | AZM: 48.6

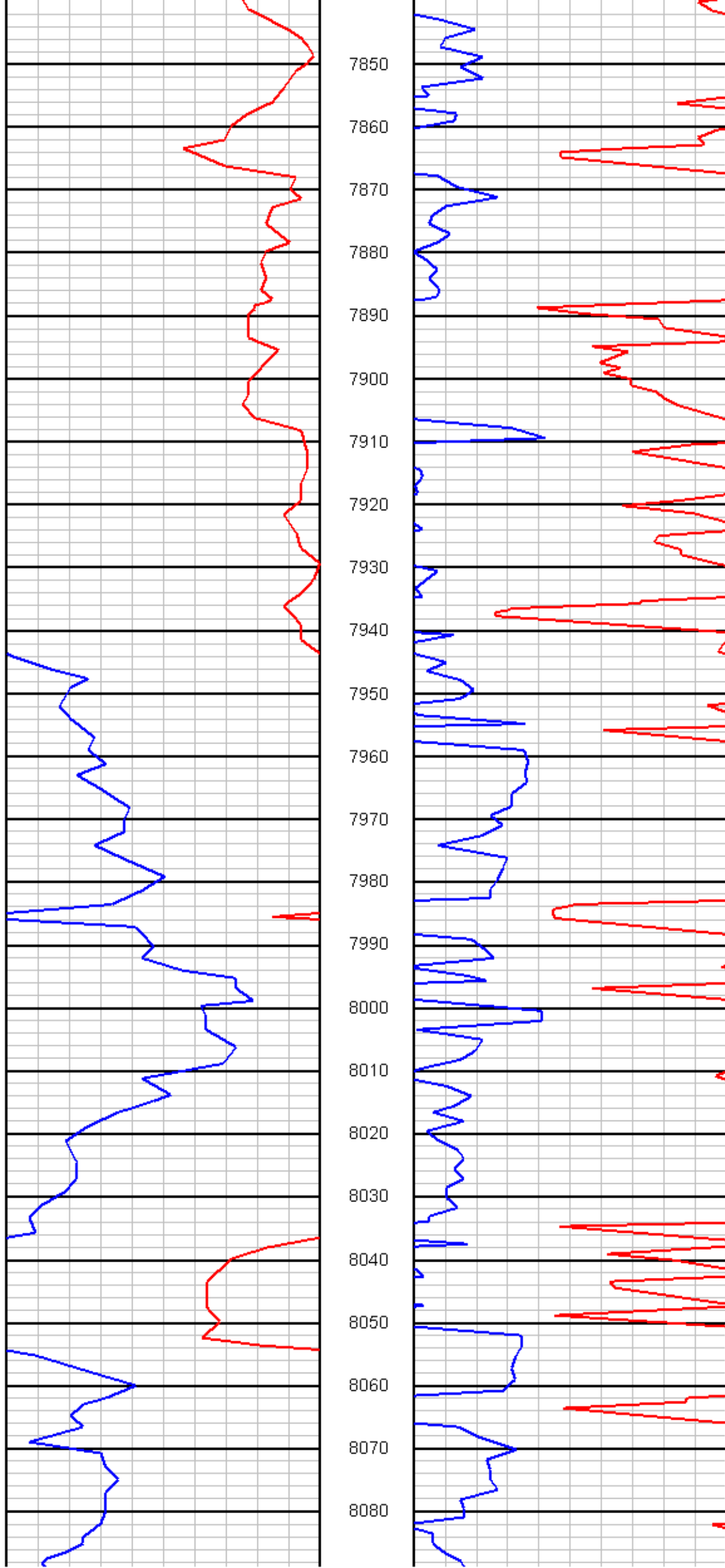
MD: 7473 | INC: 57.6 | AZM: 40.2

MD: 7567 | INC: 56 | AZM: 34.9



MD: 7662 | INC: 61.3 | AZM: 28.9

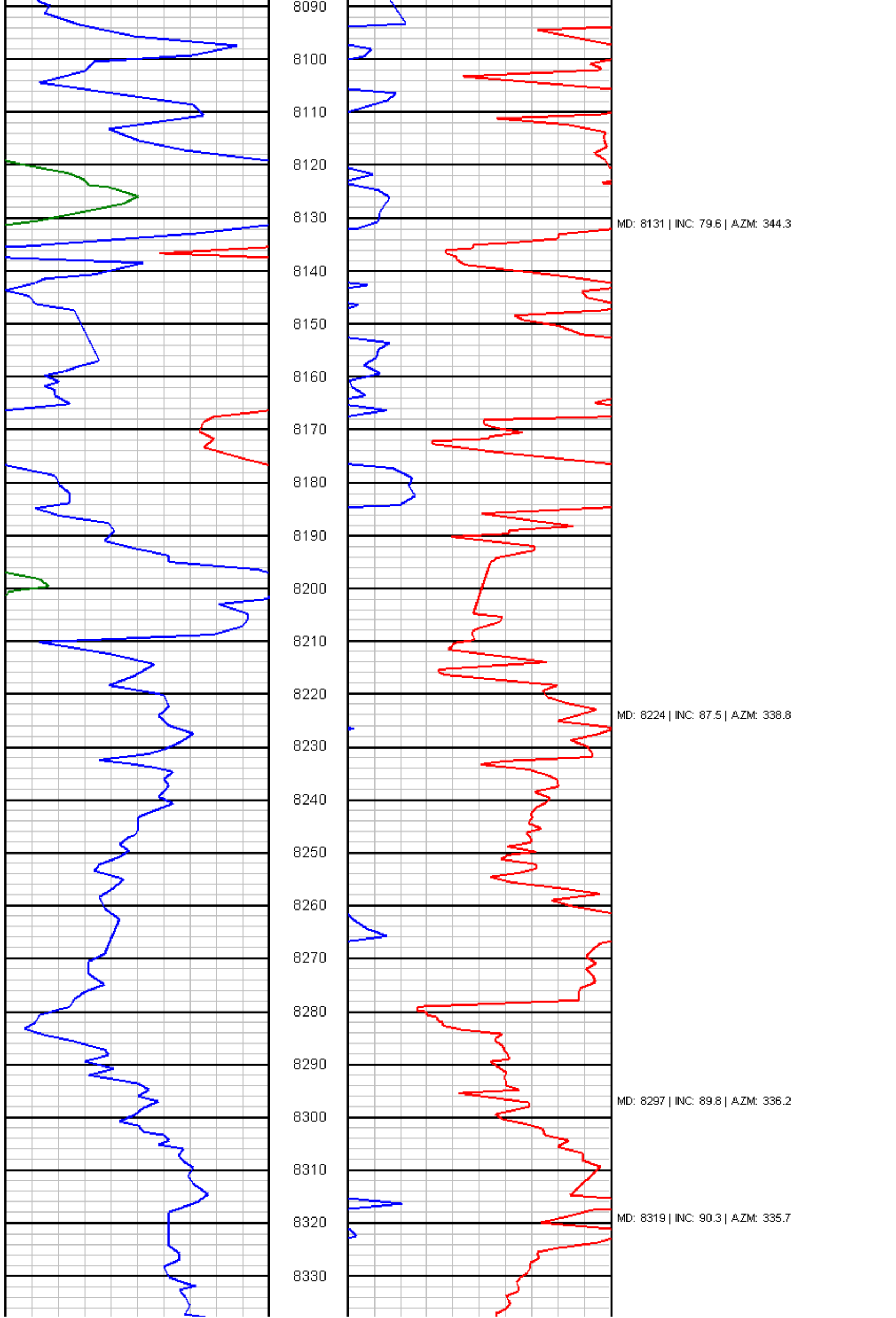
MD: 7756 | INC: 66.8 | AZM: 18.6

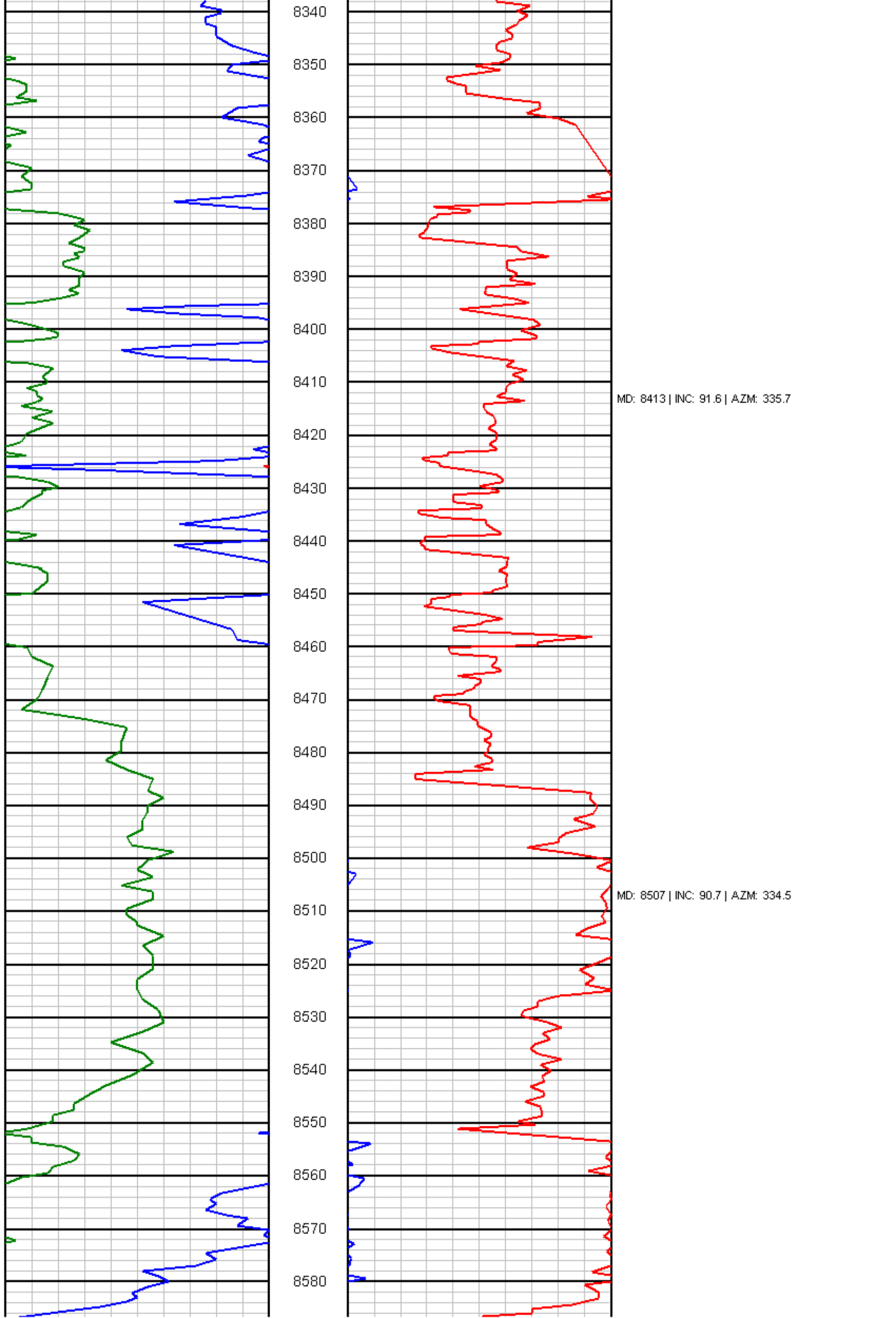


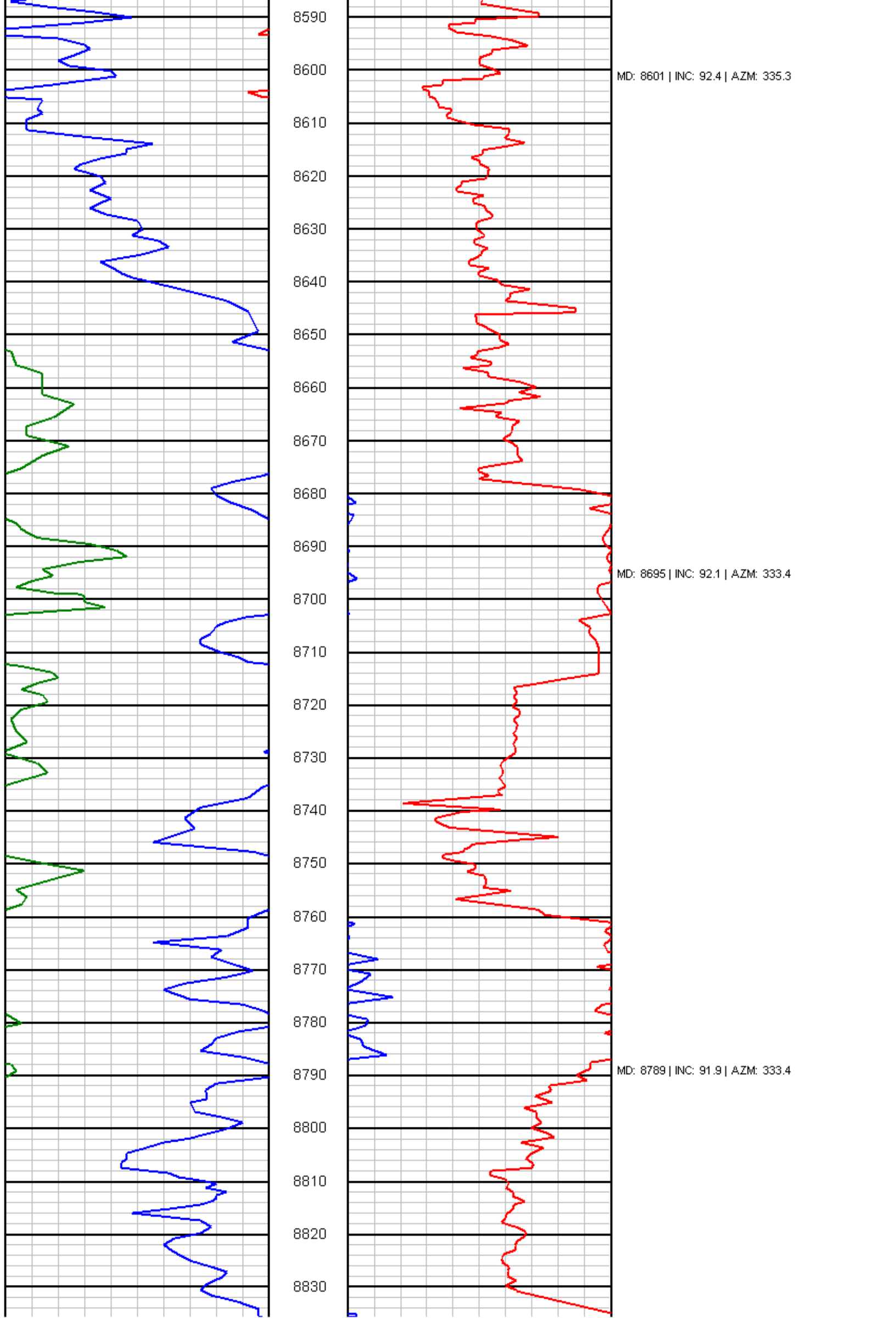
MD: 7850 | INC: 72 | AZM: 8.2

MD: 7943 | INC: 75.7 | AZM: 357.4

MD: 8037 | INC: 74.7 | AZM: 350.5





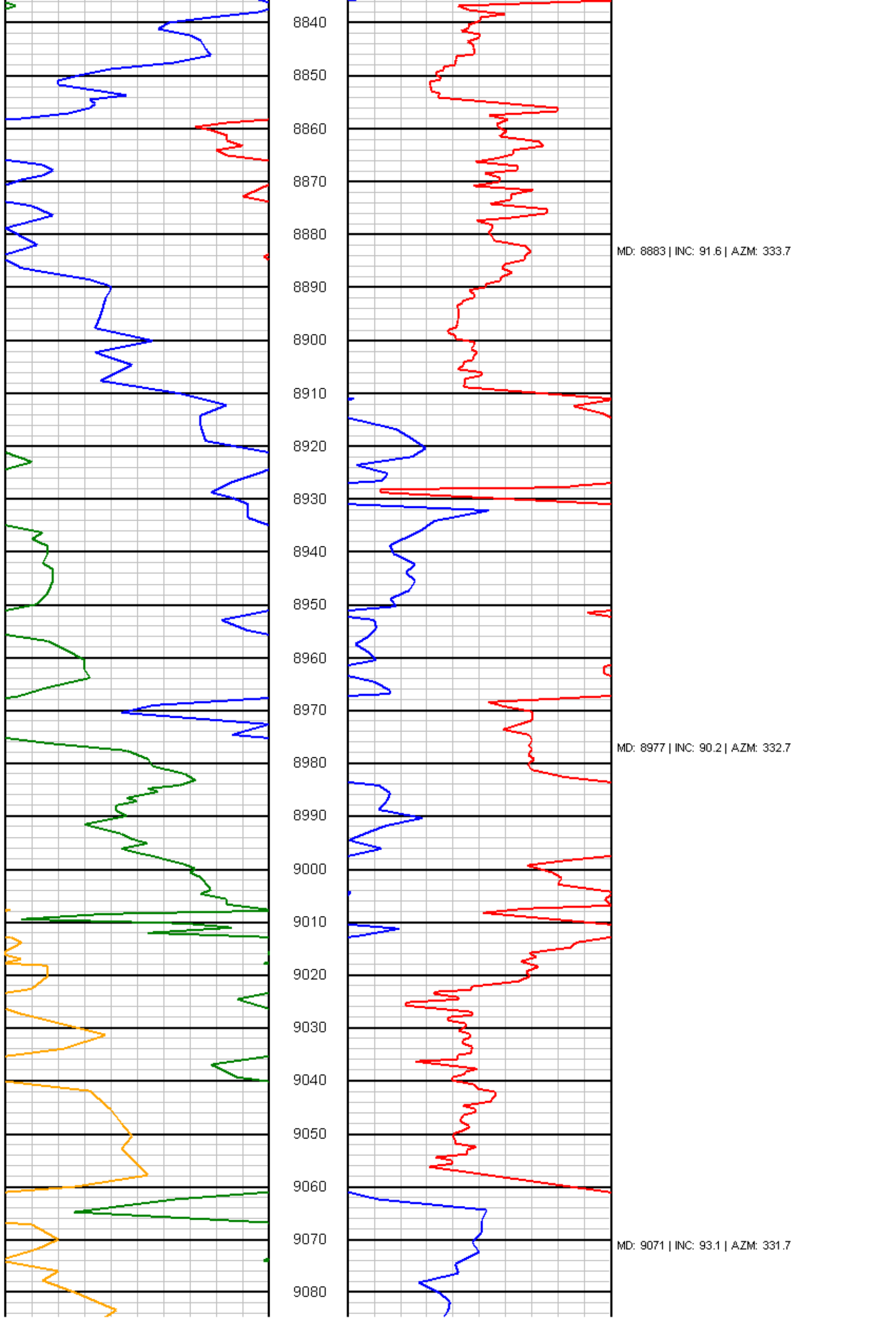


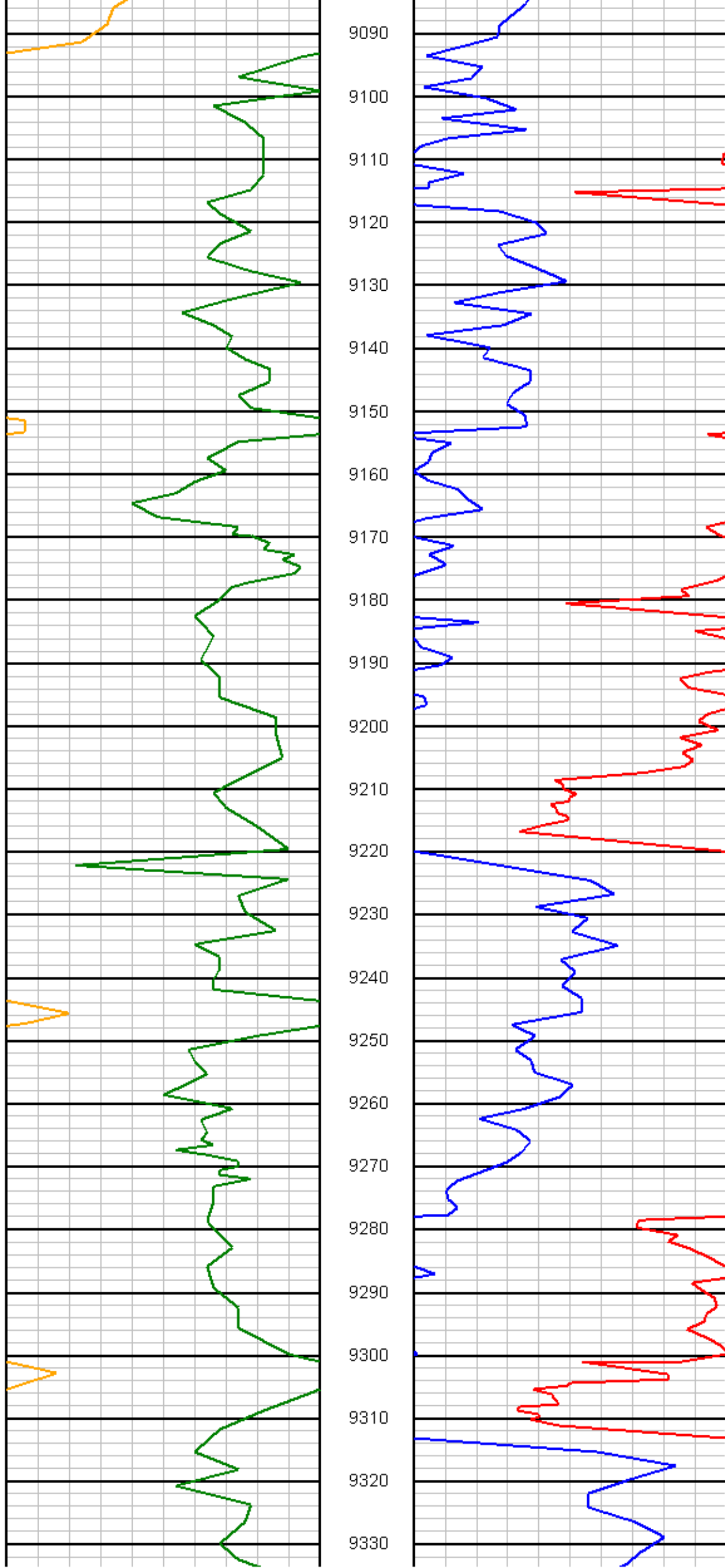
8590
8600
8610
8620
8630
8640
8650
8660
8670
8680
8690
8700
8710
8720
8730
8740
8750
8760
8770
8780
8790
8800
8810
8820
8830

MD: 8601 | INC: 92.4 | AZM: 335.3

MD: 8695 | INC: 92.1 | AZM: 333.4

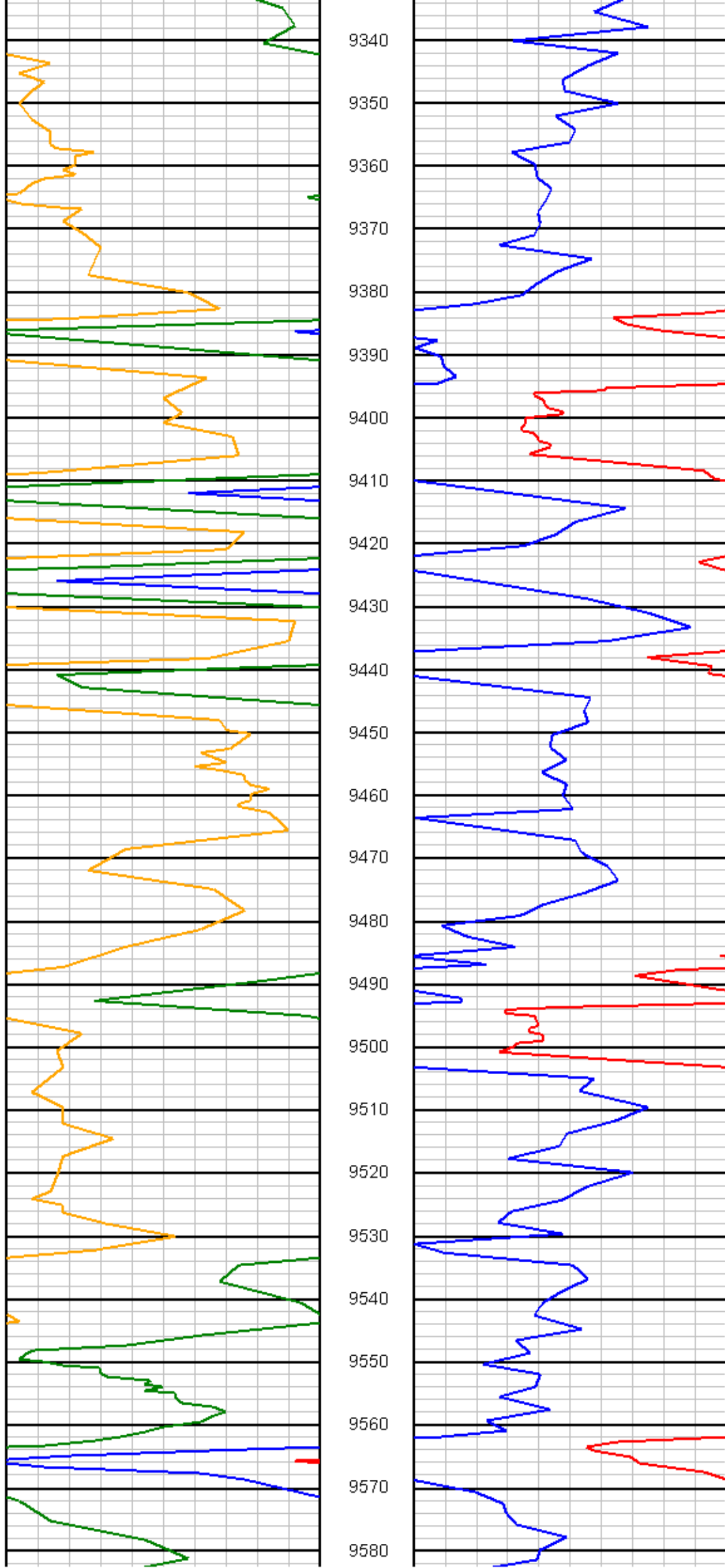
MD: 8789 | INC: 91.9 | AZM: 333.4





MD: 9165 | INC: 93.1 | AZM: 331.1

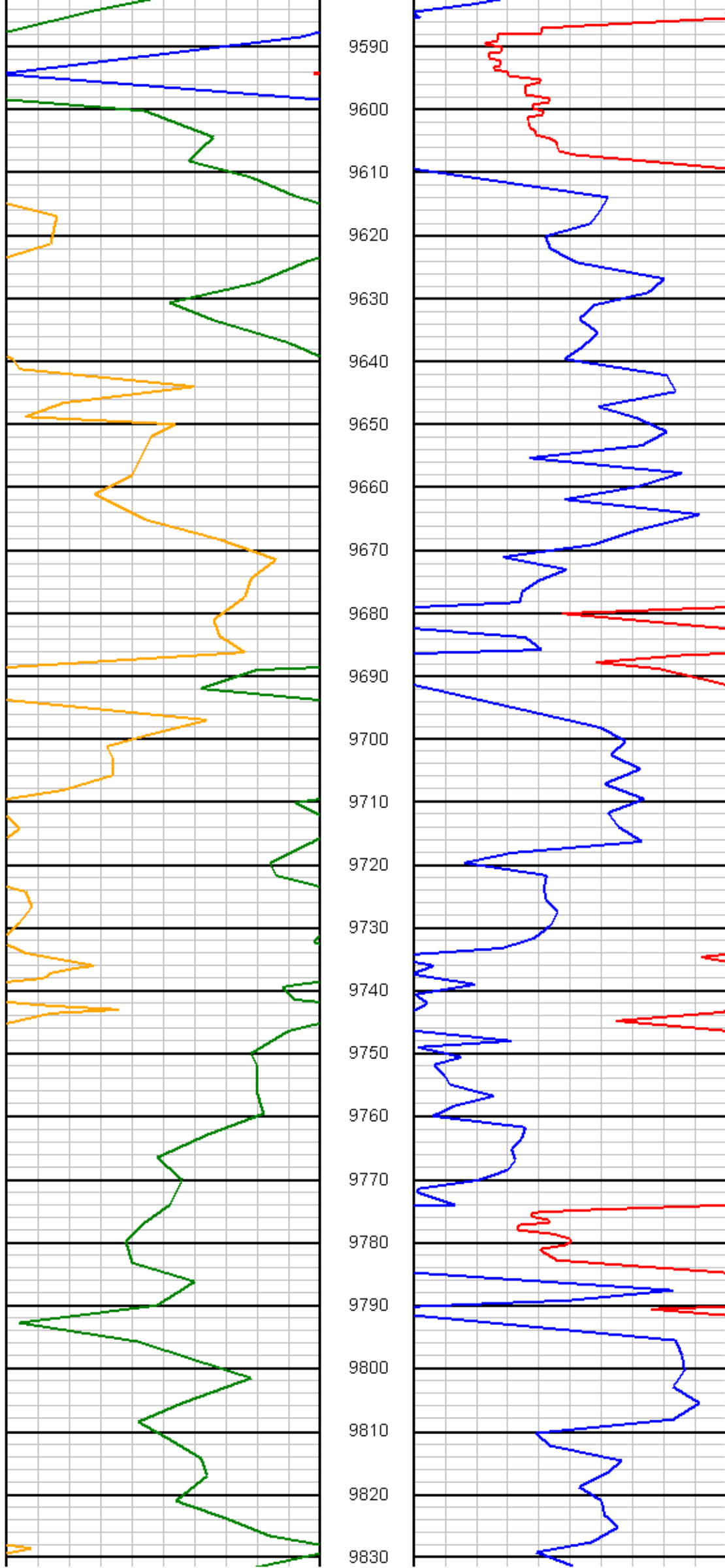
MD: 9259 | INC: 92.7 | AZM: 331.7



MD: 9352 | INC: 91.4 | AZM: 331

MD: 9447 | INC: 91.8 | AZM: 330.2

MD: 9541 | INC: 91.5 | AZM: 330



9590

9600

9610

9620

9630

9640

9650

9660

9670

9680

9690

9700

9710

9720

9730

9740

9750

9760

9770

9780

9790

9800

9810

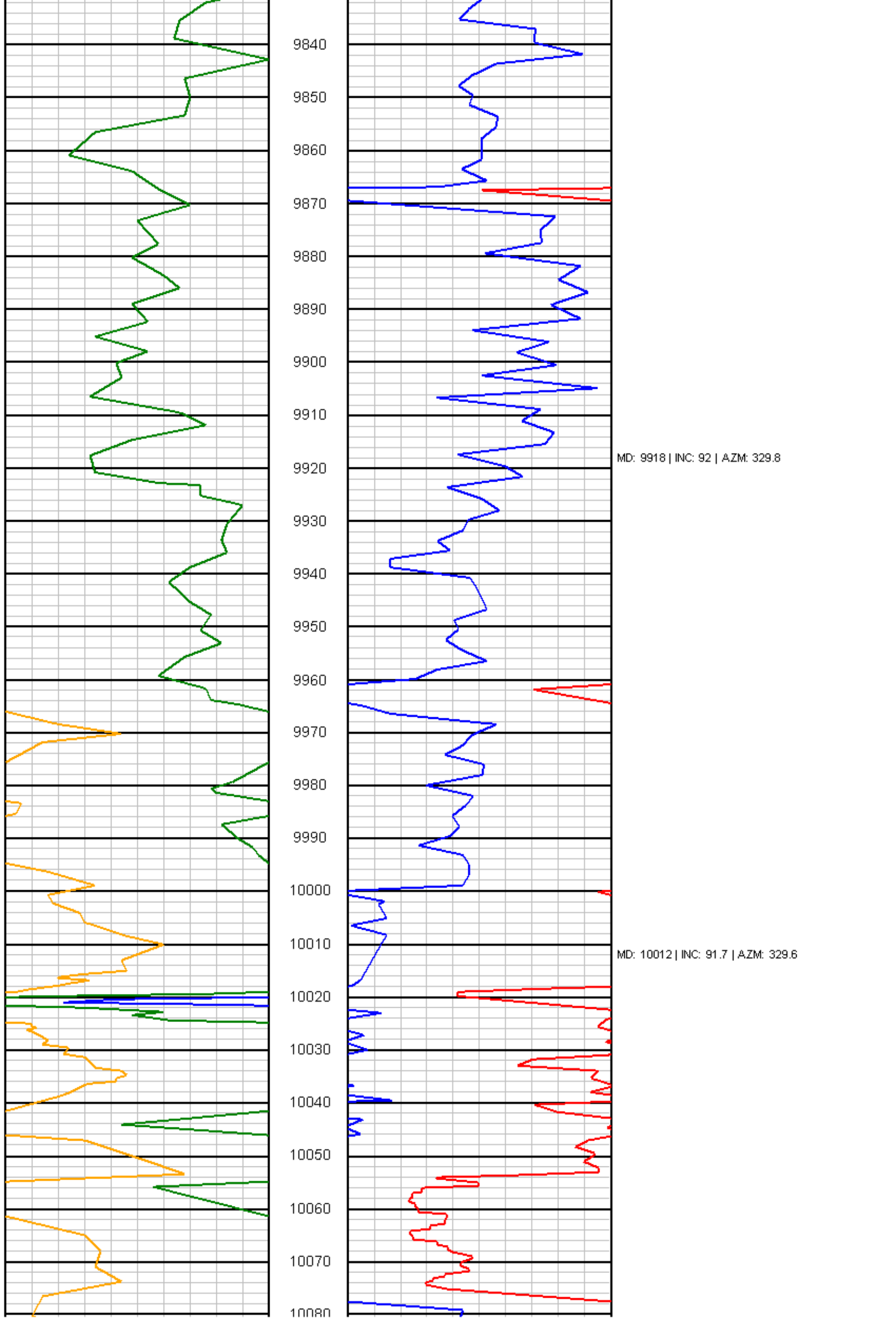
9820

9830

MD: 9635 | INC: 93.7 | AZM: 330.1

MD: 9729 | INC: 93.4 | AZM: 329

MD: 9823 | INC: 92.8 | AZM: 329.7



9840

9850

9860

9870

9880

9890

9900

9910

9920

9930

9940

9950

9960

9970

9980

9990

10000

10010

10020

10030

10040

10050

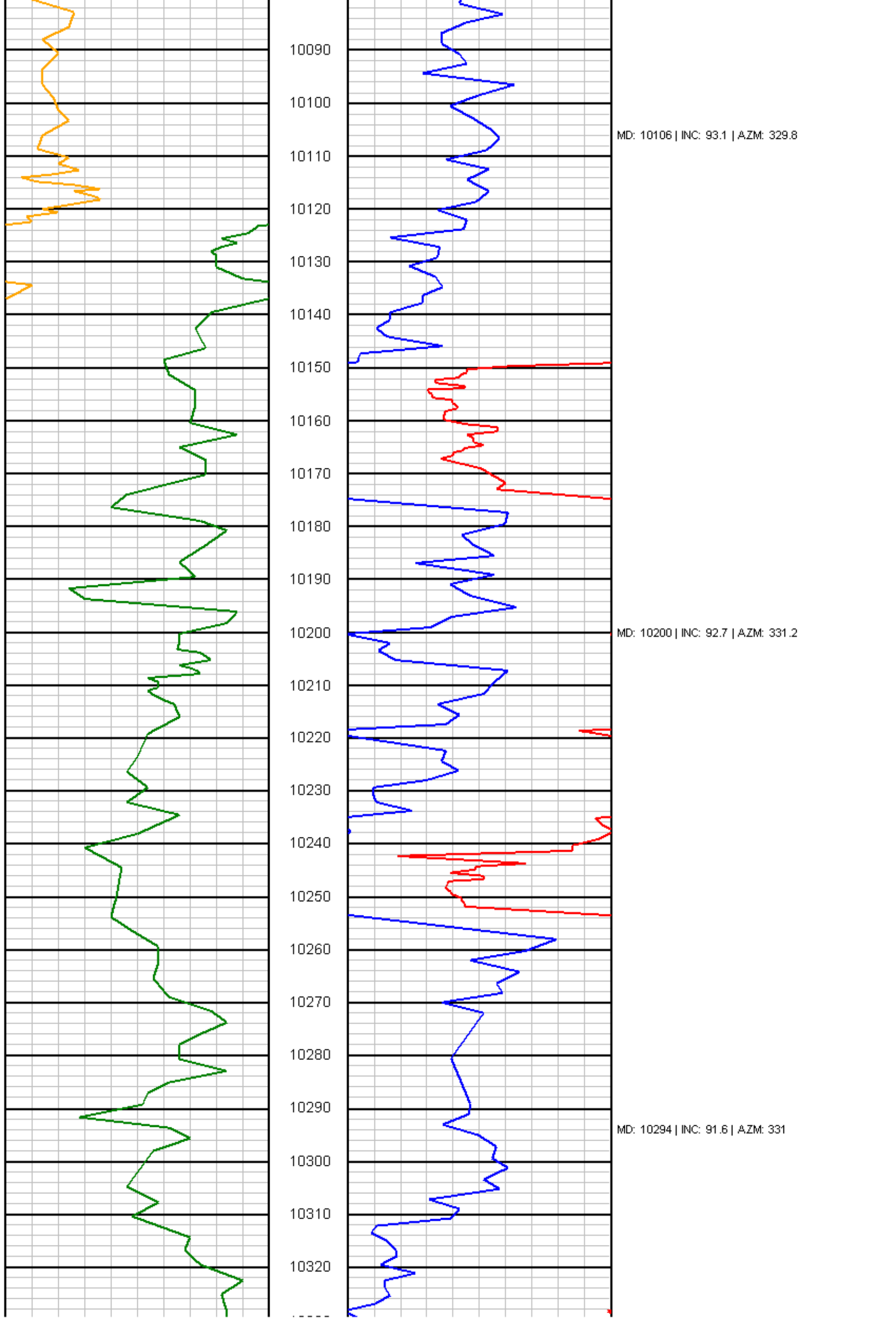
10060

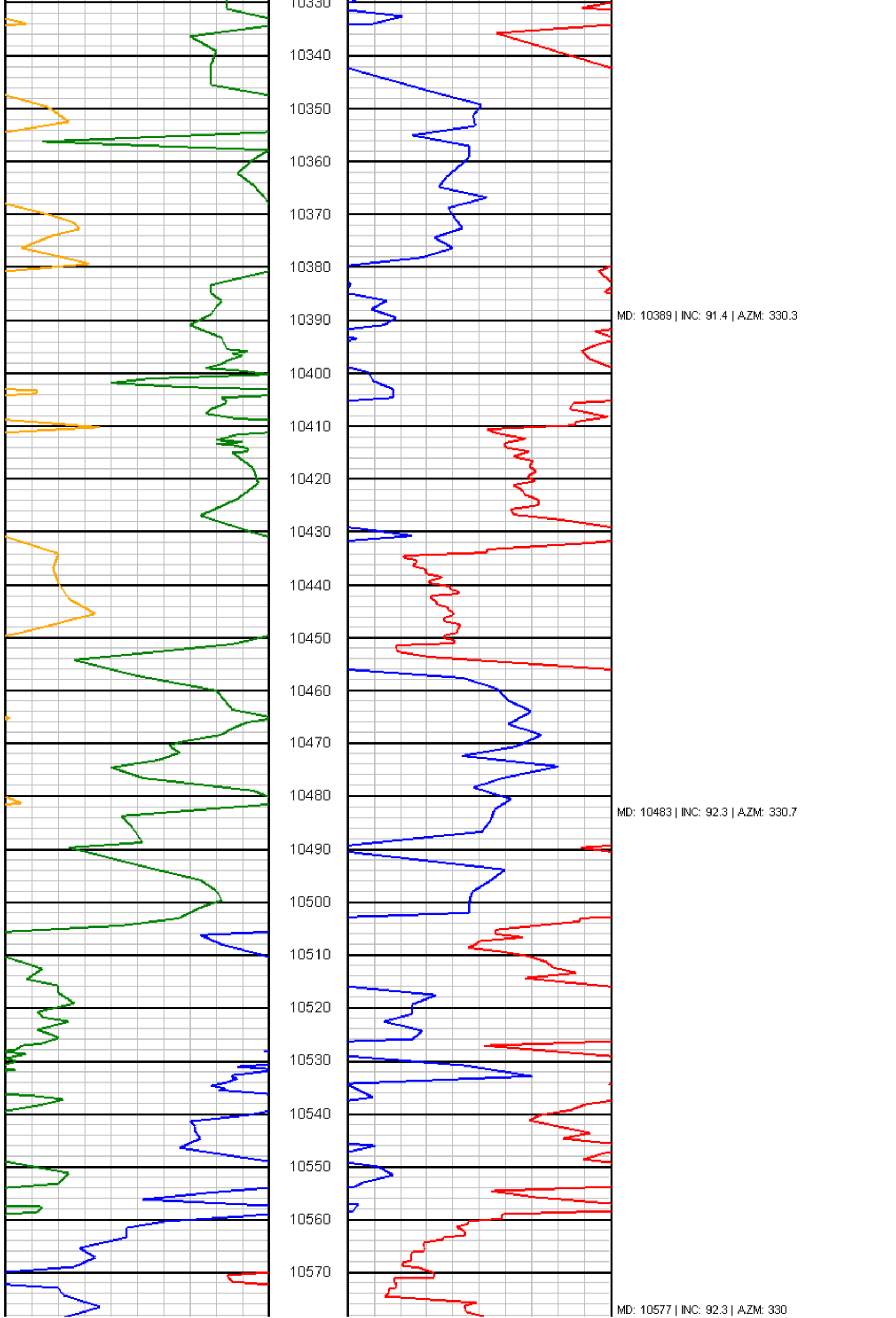
10070

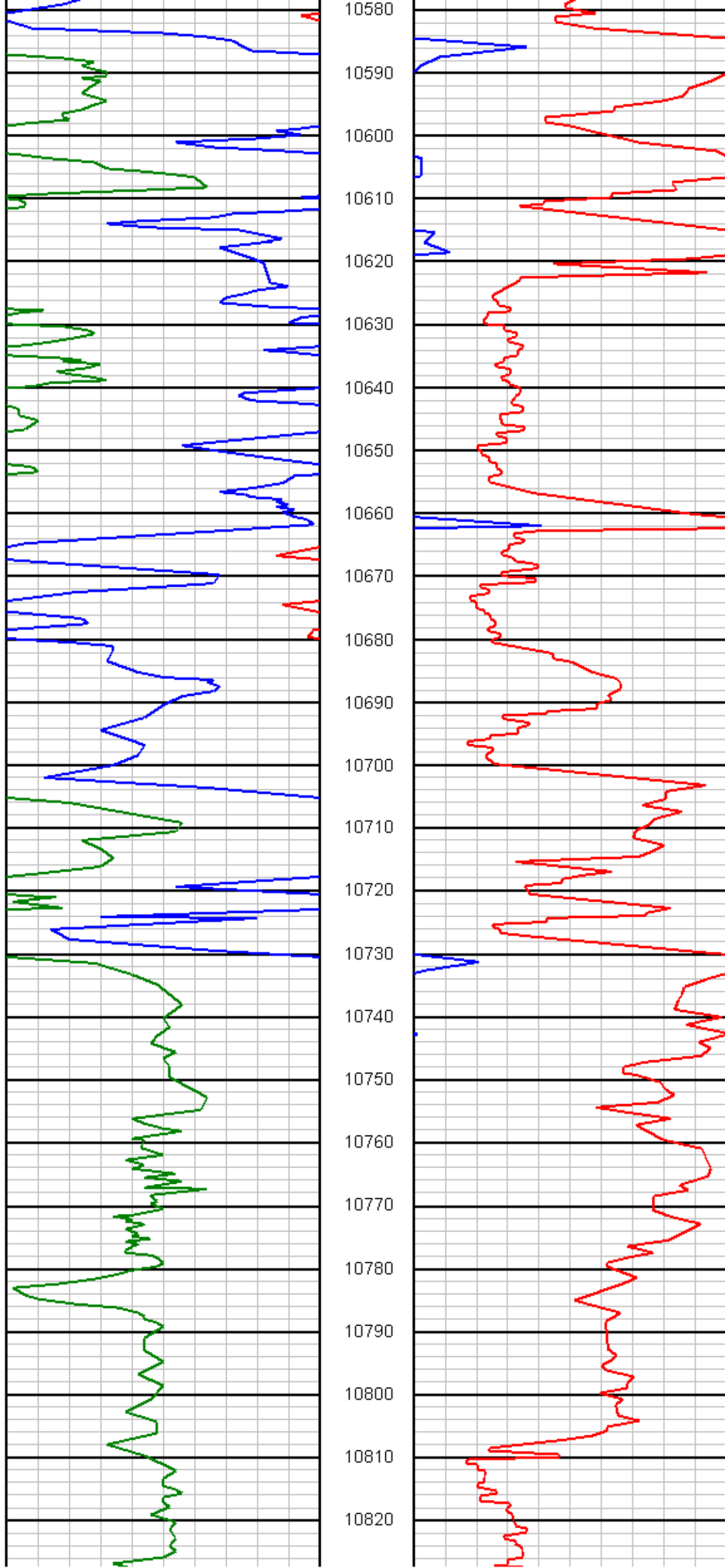
10080

MD: 9918 | INC: 92 | AZM: 329.8

MD: 10012 | INC: 91.7 | AZM: 329.6

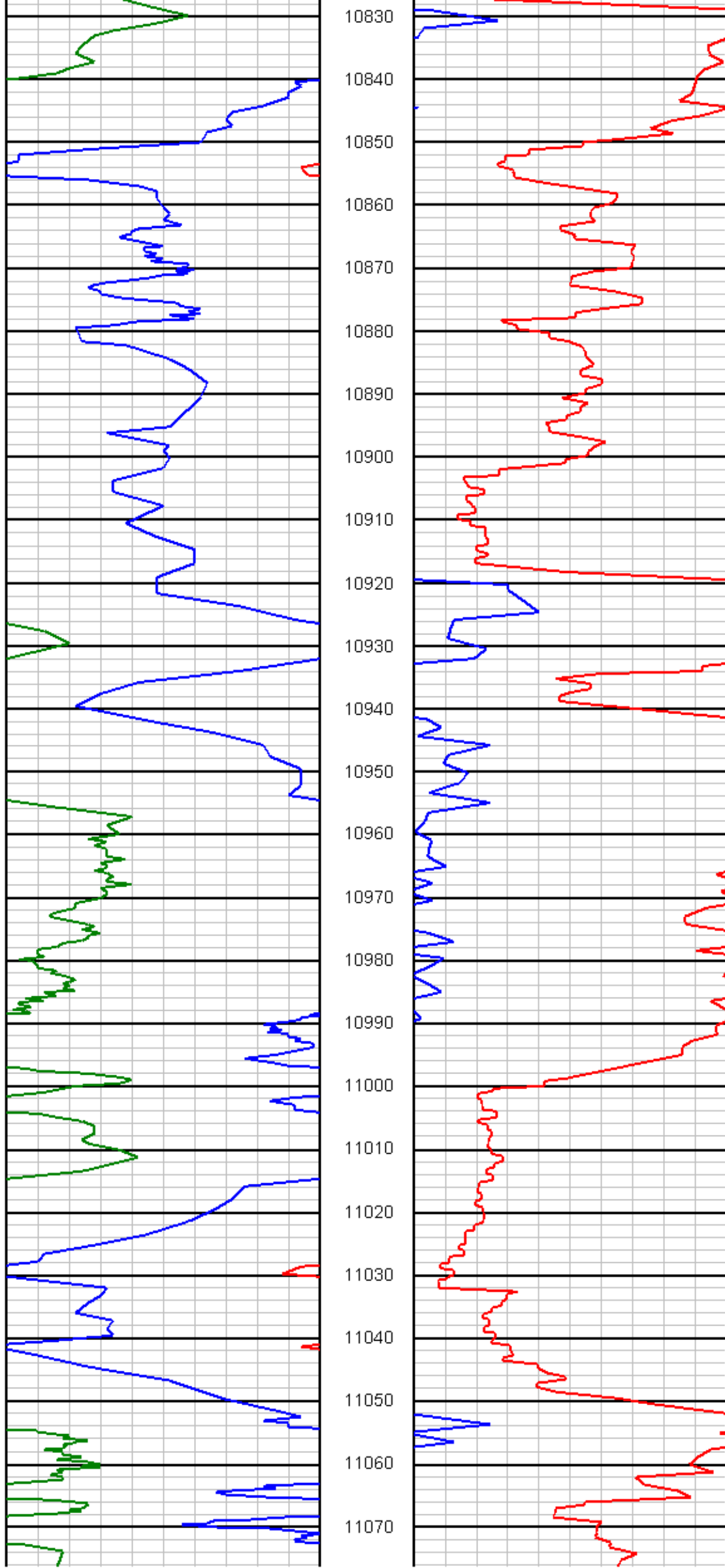






MD: 10671 | INC: 90.6 | AZM: 331.8

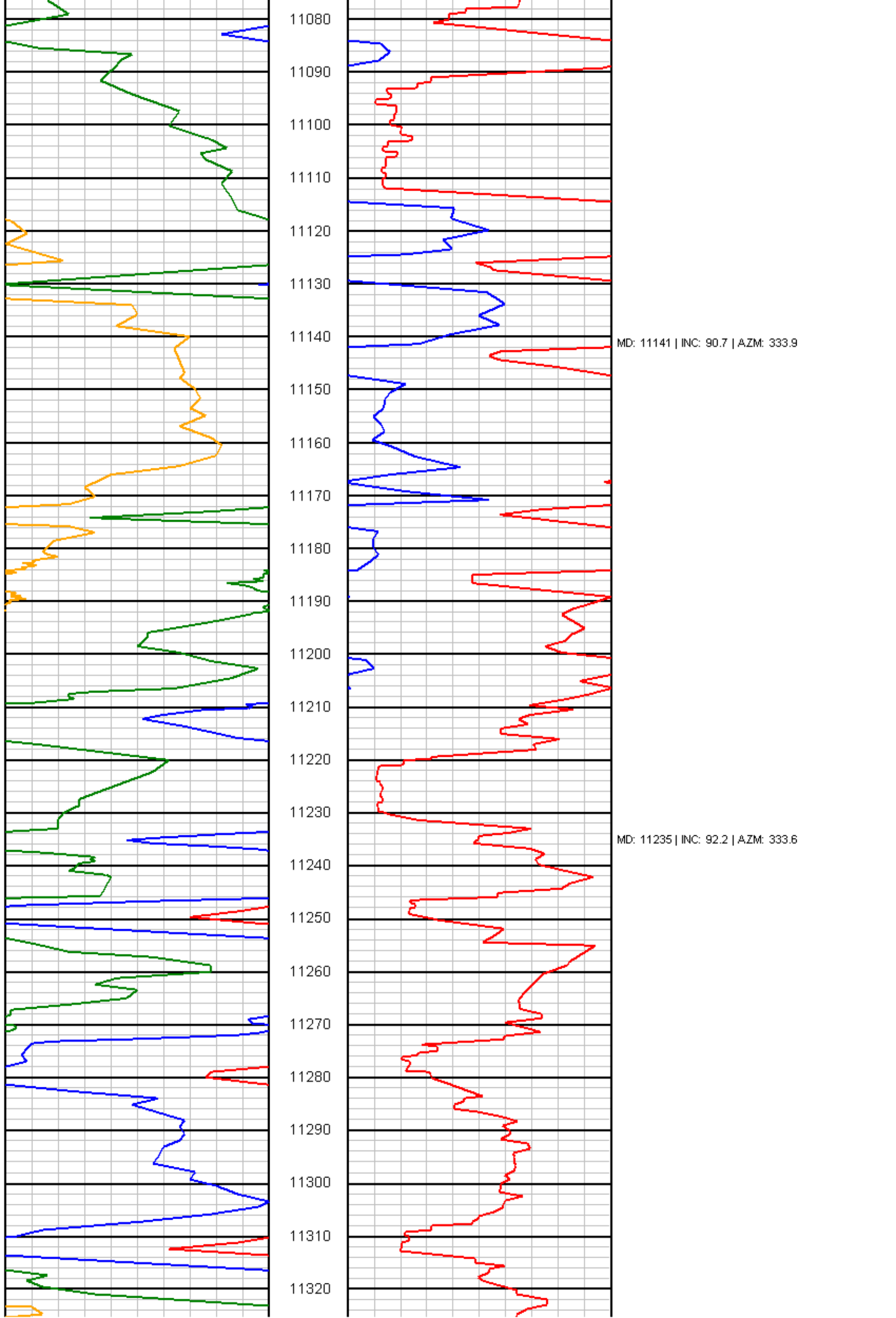
MD: 10764 | INC: 91.6 | AZM: 331.3

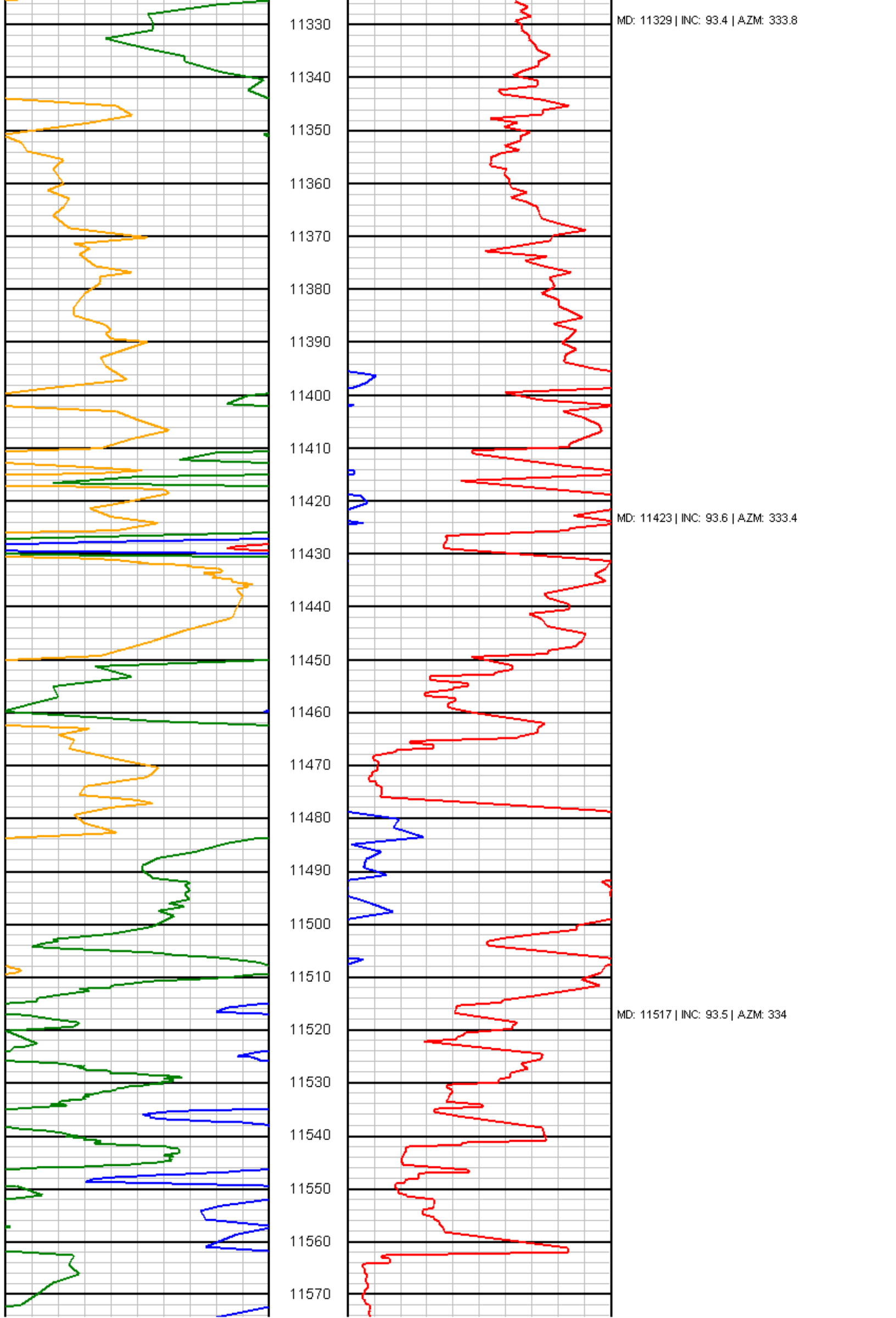


MD: 10859 | INC: 91.2 | AZM: 332.6

MD: 10953 | INC: 92.3 | AZM: 335.5

MD: 11047 | INC: 89.4 | AZM: 334.8

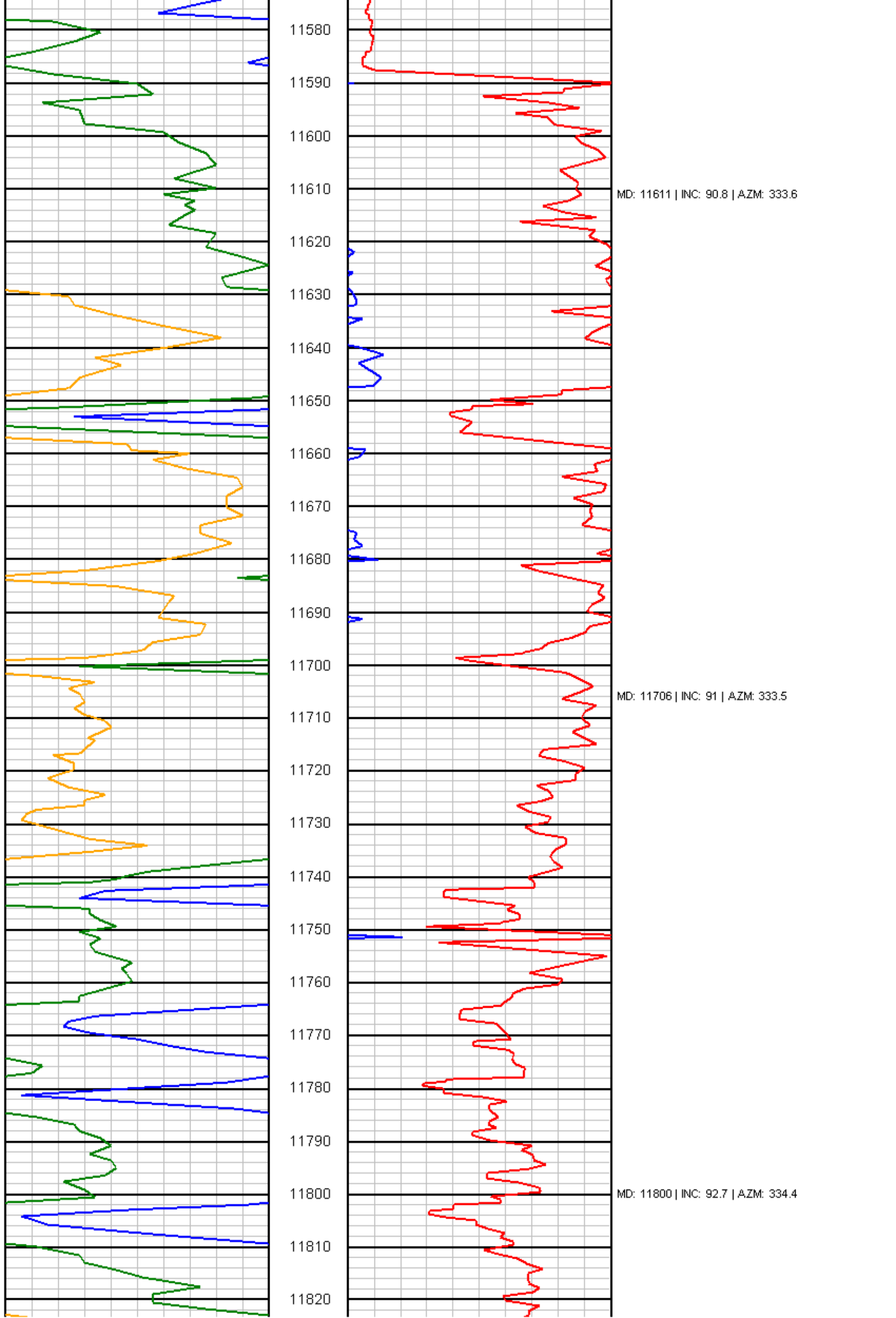


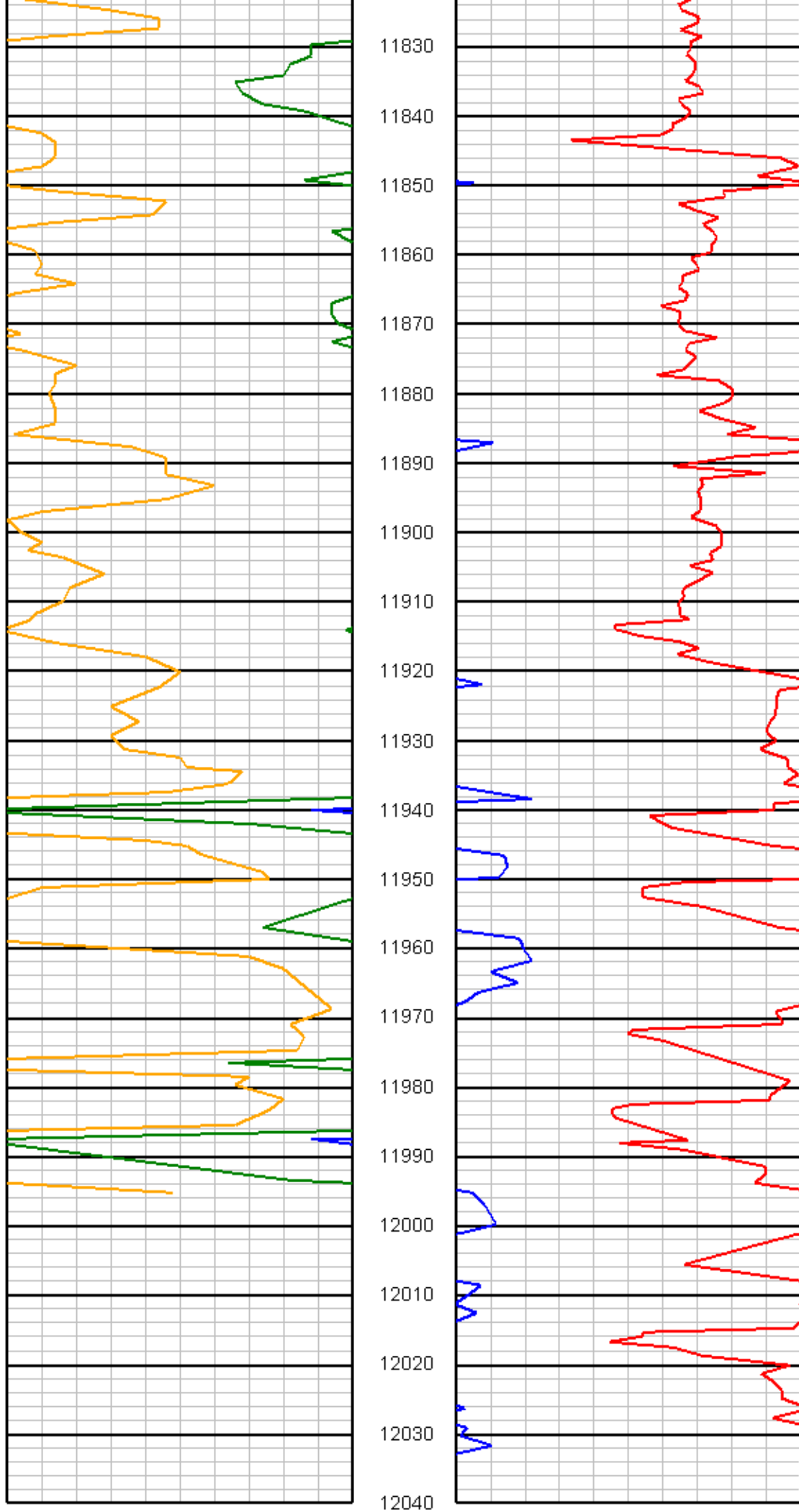


MD: 11329 | INC: 93.4 | AZM: 333.8

MD: 11423 | INC: 93.6 | AZM: 333.4

MD: 11517 | INC: 93.5 | AZM: 334





MD: 11894 | INC: 93.1 | AZM: 334.1

MD: 11993 | INC: 93.5 | AZM: 334

MD: 12037 | INC: 93.5 | AZM: 334