



PHOENIX TECHNOLOGY SERVICES

MD
1:240
Feet

Client: **FOT**
Well Name: **513082**
Country: **Taylor**

MWD Gamma / ROP

Company Representative

Unique ID/API: **47-9101-225**

Surface Location: **Taylor County**

Country: **US**
State: **West Virginia**

Geologist

Kevin Wolfe

Rig Name: **Patterson 622**
Latitude: **39° 17' 30.991 N**
Longitude: **80° 9' 10.936 W**

License/Permit#: **225**

Directional Drillers

Cody Barrick
Matt LaFreniere

Job No: **1130307**
Permanent Datum: **Mean Sea Level**
Drilling Measurement From: **Drill Floor**

GL: **1420** Feet
KB: **1443** Feet

Spud Date: **February 6, 2011**
Print Date: **June 14, 2011**
Log Start Depth: **6980** Feet
Log End Depth: **12030** Feet
Bottom Hole Temp: **181.4 °F**

Leg Name

Main Leg

Comments:

PHOENIX TECHNOLOGY SERVICES LP (PHOENIX) DOES NOT MAKE AND EXPRESSLY DISCLAIMS ALL WARRANTIES, REPRESENTATIONS AND CONDITIONS, WITH RESPECT TO THE INFORMATION CONTAINED IN THIS DOCUMENT, WHETHER ORAL OR WRITTEN, EXPRESS OR IMPLIED OR ARISING FROM CONTRACT OR STATUTE INCLUDING, WITHOUT LIMITATION, THE IMPLIED WARRANTIES OF MERCHANTABILITY, ACCURACY AND FITNESS FOR A PARTICULAR PURPOSE. ANYONE USING THIS INFORMATION DOES SO AT THEIR OWN RISK AND ACKNOWLEDGES AND AGREES THAT PHOENIX SHALL NOT BE LIABLE FOR ANY ERROR, OMISSION, DEFECT, DELAY, OR INCONVENIENCE IN THE INFORMATION AND WITHOUT LIMITING THE FOREGOING, PHOENIX DOES NOT WARRANT THAT THE INFORMATION OR THE USE THEREOF WILL BE FREE OF ALL ERRORS OR THAT IT DOES NOT INFRINGE ANY THIRD PARTY RIGHTS. ANYONE USING THE INFORMATION AGREES TO INDEMNIFY AND HOLD PHOENIX HARMLESS FROM ALL CLAIMS, ACTIONS, COSTS, INCLUDING LEGAL COSTS ON A SOLIDATION AND REASONABLE CLIENT BASIS, AND LIABILITIES ARISING FROM OR IN CONNECTION WITH THE USE OF THE INFORMATION.

| BitRun: | 1 | 2 | 3 | 4 |
|--------------------------|-------------|-------------|-------------|-------------|
| Start Depth (ft): | 6980 | 7322 | 7443 | 7945 |
| End Depth (ft): | 7322 | 7443 | 7945 | 12029.04 |
| Start Date: | 2011.02.05 | 2011.05.09 | 2011.05.10 | 2011.05.11 |
| End Date: | 2011.05.09 | 2011.05.10 | 2011.05.11 | 2011.05.14 |
| Gamma Scale Factor: | 3.480 | 3.480 | 3.480 | 3.480 |
| Stoney-b-Bit (PTB): | 54 | 56 | 56 | 56 |
| Gamma-b-Bit (GTB): | 49 | 51 | 51 | 51 |
| Tool Carrier ID (ft): | 2.75 | 2.75 | 2.75 | 2.75 |
| Tool Carrier OD (ft): | 5 | 5 | 5 | 5 |
| Hole Size (ft): | 8.5 | 8.5 | 8.5 | 7.875 |
| Casing Size (ft): | 9.625 | 9.625 | 9.625 | 9.625 |
| Casing Start Depth (ft): | 0 | 0 | 0 | 0 |
| Casing End Depth (ft): | 2630 | 2630 | 2630 | 2630 |
| Mud Type: | Water Based | Water Based | Water Based | Water Based |
| Mud Weight (lb/gal): | 12.2 | 12.2 | 12.2 | 12.2 |
| Mud Viscosity: | 47 | 47 | 47 | 47 |
| KCL Correction Factor: | 0.003 | 0.003 | 0.003 | 0.003 |
| Mud KCL Content (%): | 0.001 | 0.001 | 0.001 | 0.001 |
| Comment: | - | - | - | - |

| BitRun: | | | | |
|--------------------------|--|--|--|--|
| Start Depth (ft): | | | | |
| End Depth (ft): | | | | |
| Start Date: | | | | |
| End Date: | | | | |
| Gamma Scale Factor: | | | | |
| Stoney-b-Bit (PTB): | | | | |
| Gamma-b-Bit (GTB): | | | | |
| Tool Carrier ID (ft): | | | | |
| Tool Carrier OD (ft): | | | | |
| Hole Size (ft): | | | | |
| Casing Size (ft): | | | | |
| Casing Start Depth (ft): | | | | |
| Casing End Depth (ft): | | | | |
| Mud Type: | | | | |
| Mud Weight (lb/gal): | | | | |
| Mud Viscosity: | | | | |
| KCL Correction Factor: | | | | |
| Mud KCL Content (%): | | | | |
| Comment: | | | | |

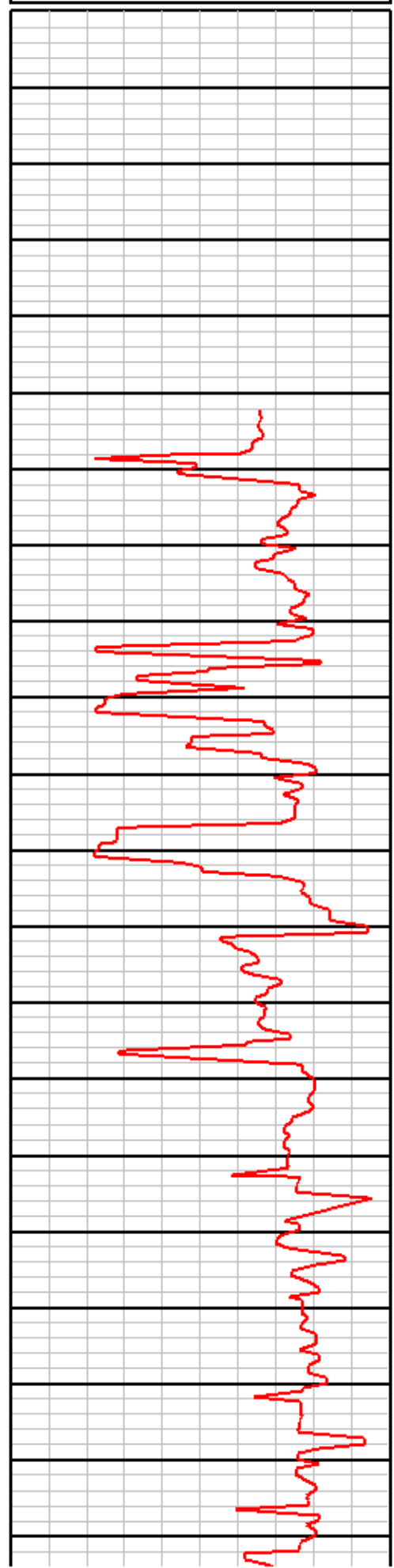
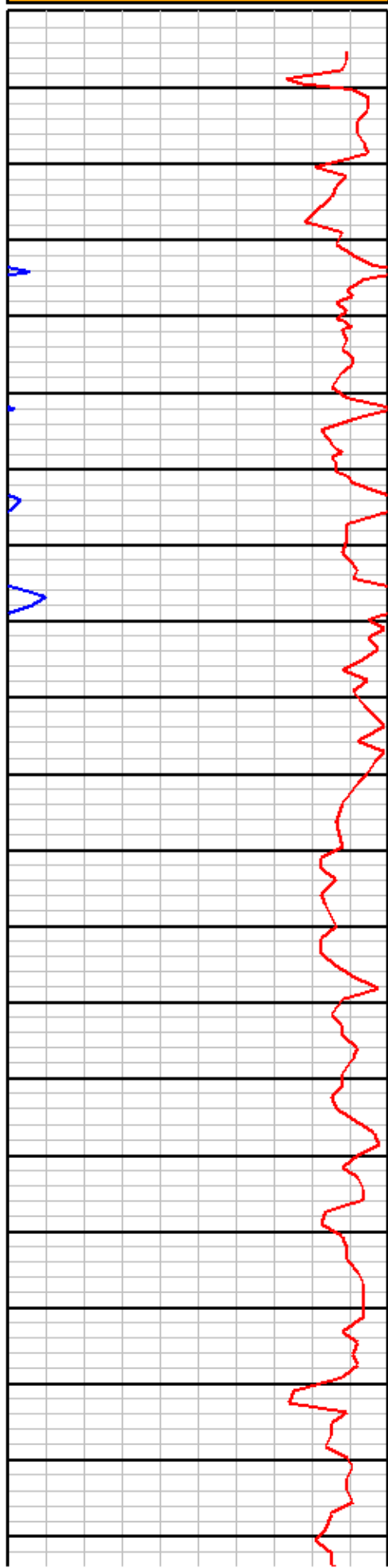


EQT
513052
Taylor
1130307

MD
1:240
Feet

| | | |
|-----|-------------|------|
| 0 | Gamma (API) | 250 |
| 250 | Gamma (API) | 500 |
| 500 | Gamma (API) | 750 |
| 750 | Gamma (API) | 1000 |

| | | |
|-----|-------------|-----|
| 0 | ROP (ft/hr) | 150 |
| 150 | ROP (ft/hr) | 300 |



MD: 6983
INC: 2.5
AZM: 302.9

MD: 7014
INC: 6.9
AZM: 311.6

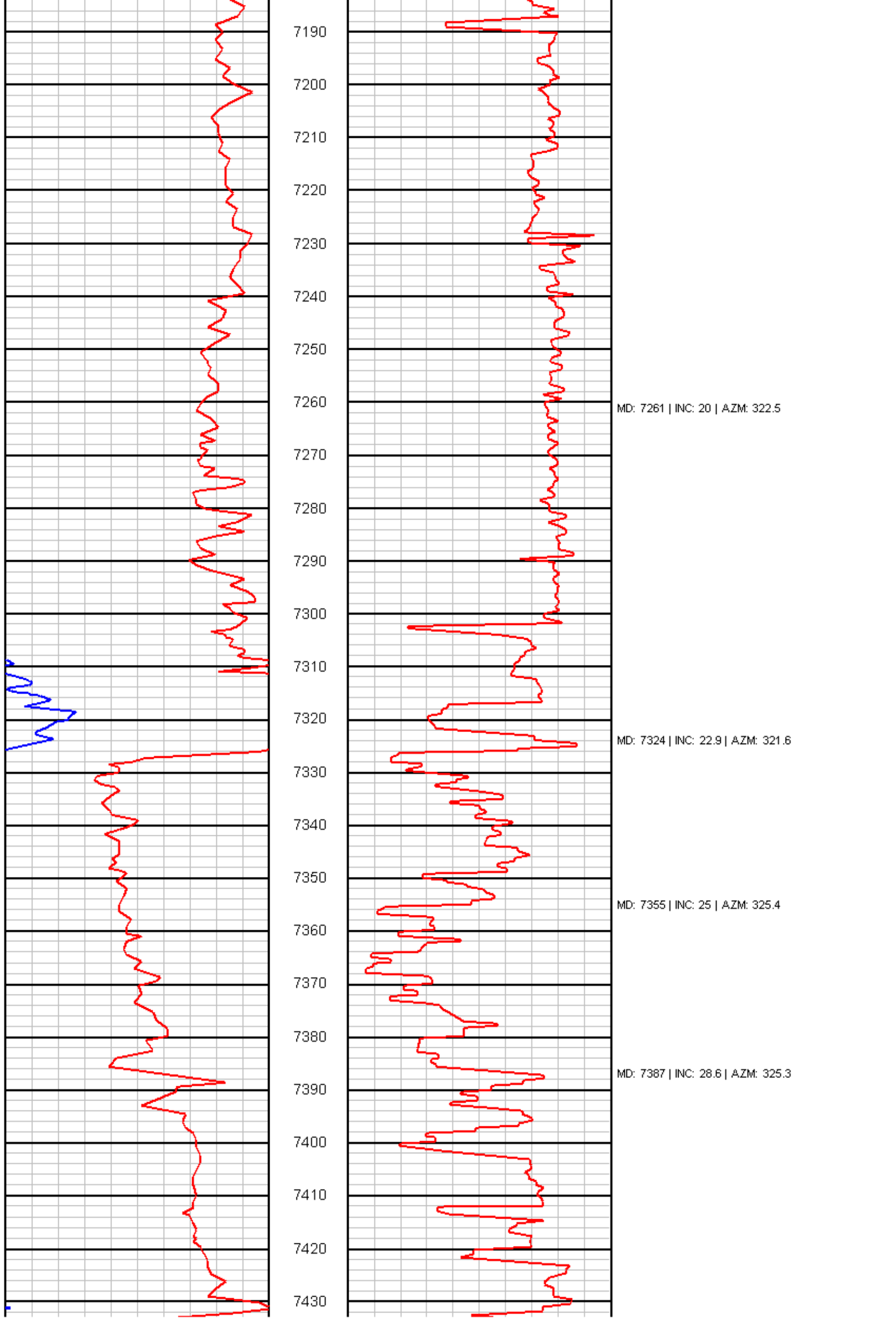
MD: 7046
INC: 10.4
AZM: 315.6

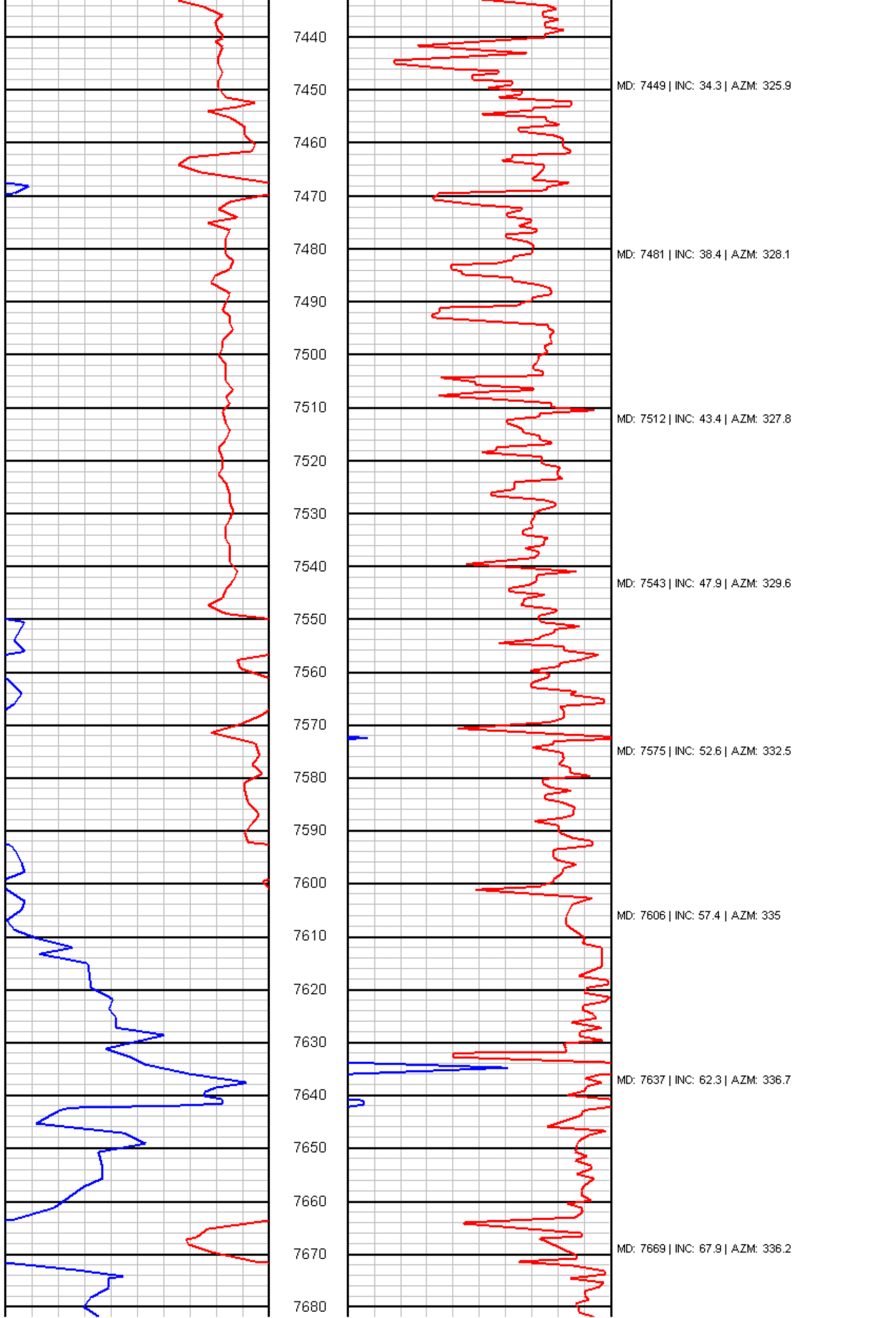
MD: 7077
INC: 13
AZM: 317.2

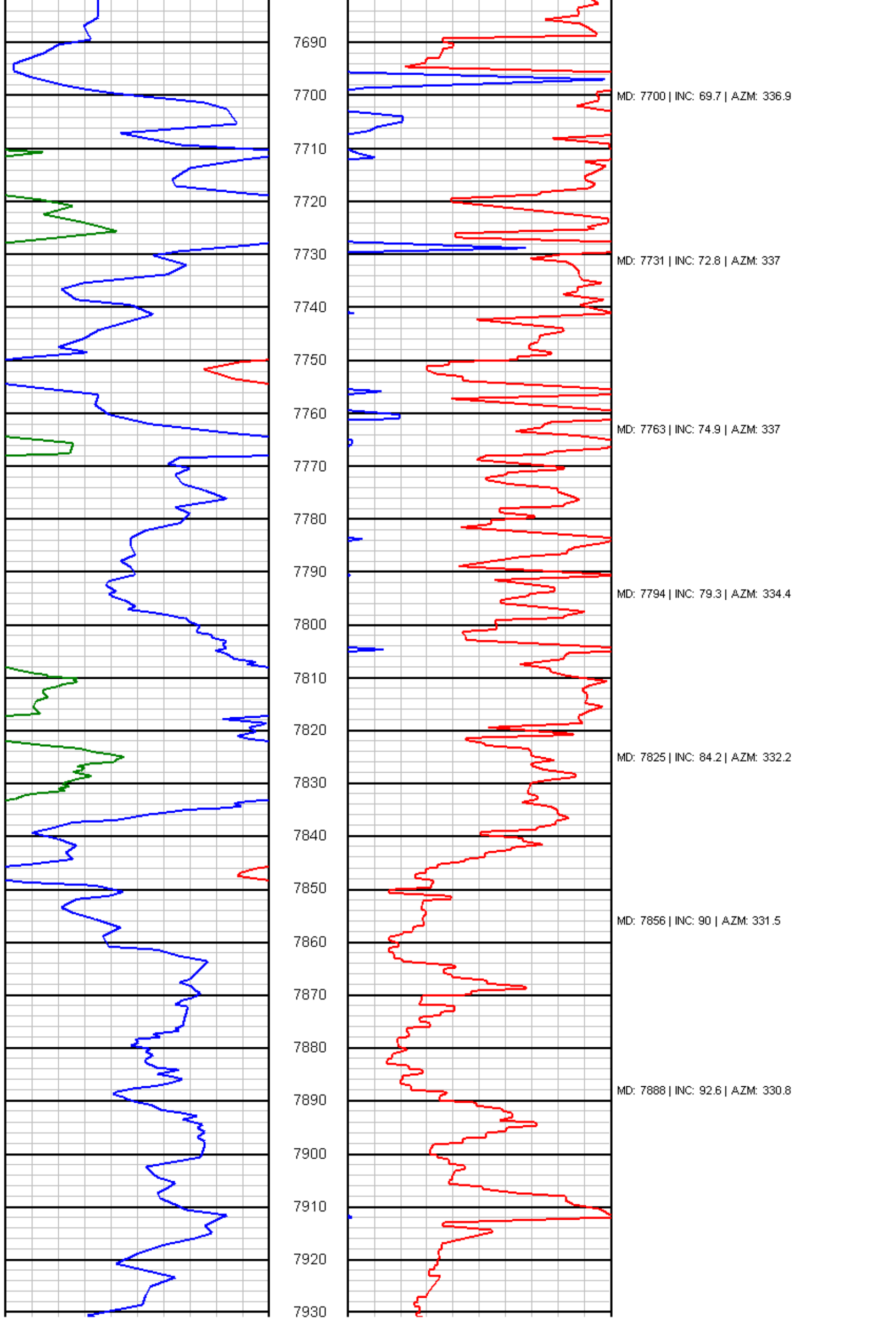
MD: 7167 | INC: 18.3 | AZM: 322.7

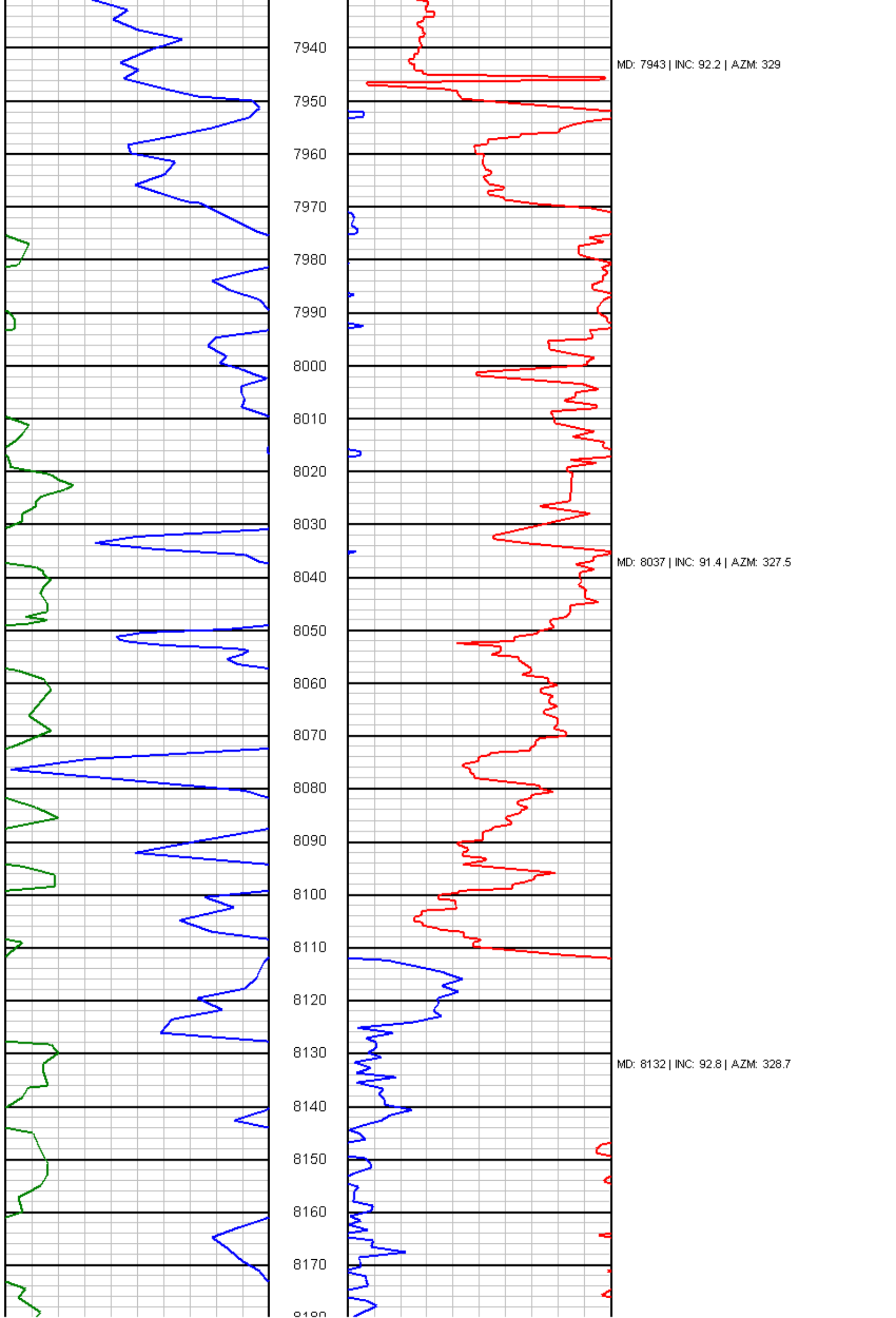


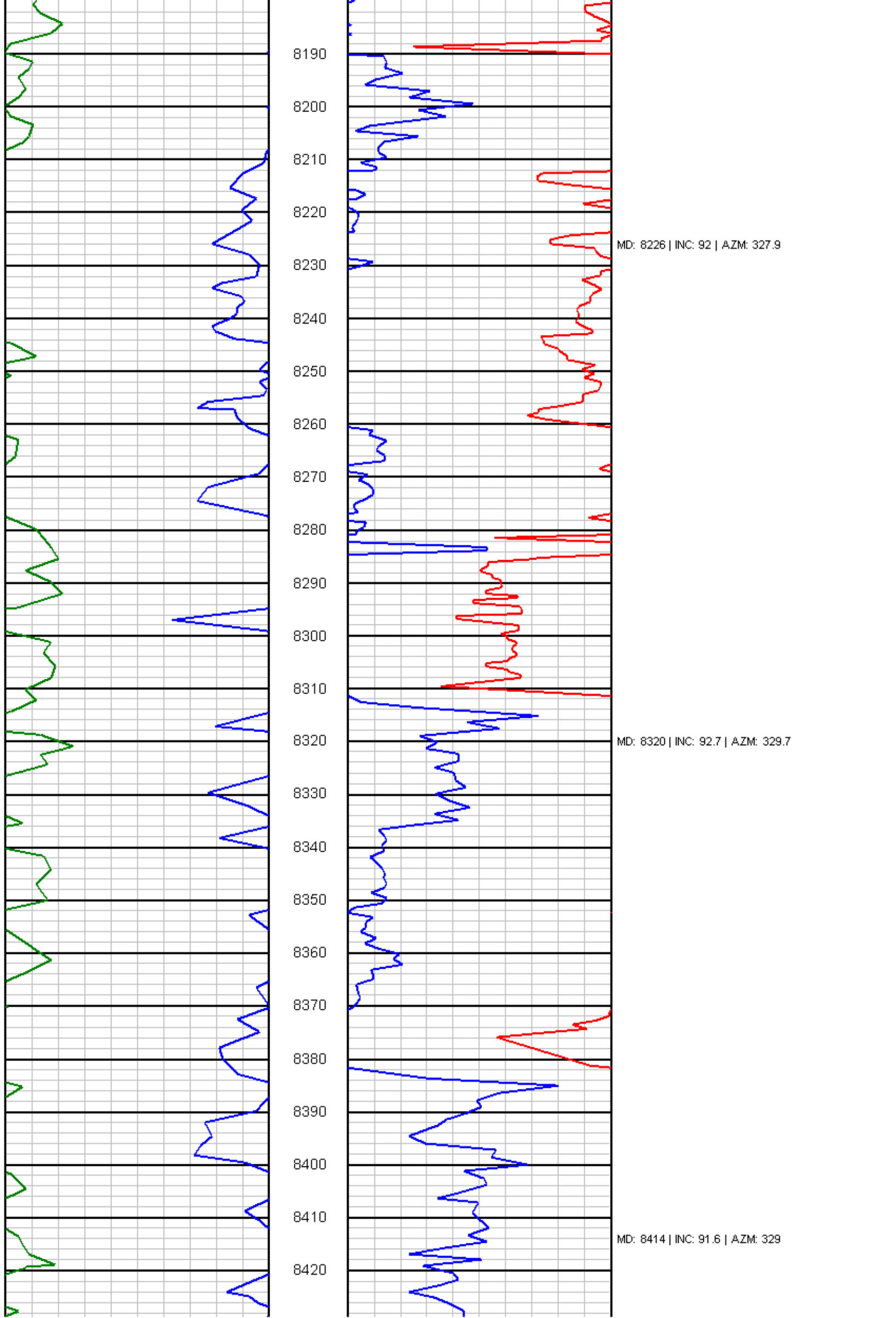
PHOENIX
TECHNOLOGY SERVICES









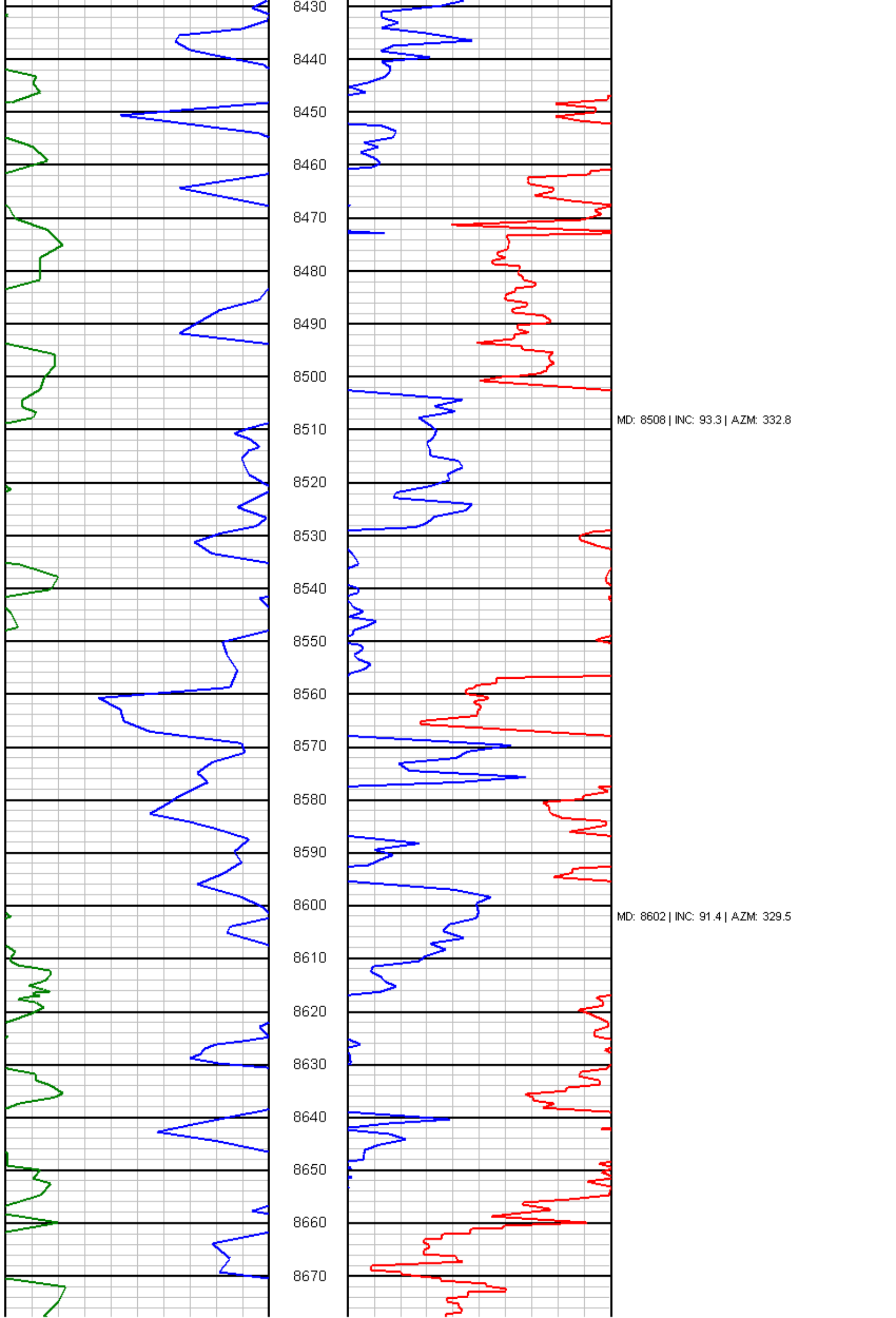


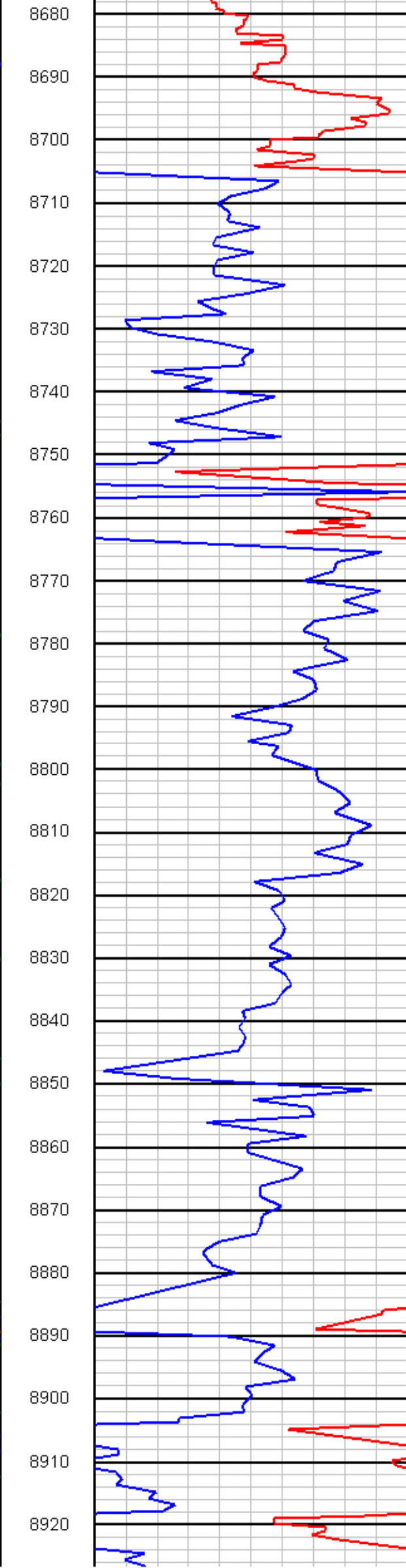
8190
8200
8210
8220
8230
8240
8250
8260
8270
8280
8290
8300
8310
8320
8330
8340
8350
8360
8370
8380
8390
8400
8410
8420

MD: 8226 | INC: 92 | AZM: 327.9

MD: 8320 | INC: 92.7 | AZM: 329.7

MD: 8414 | INC: 91.6 | AZM: 329

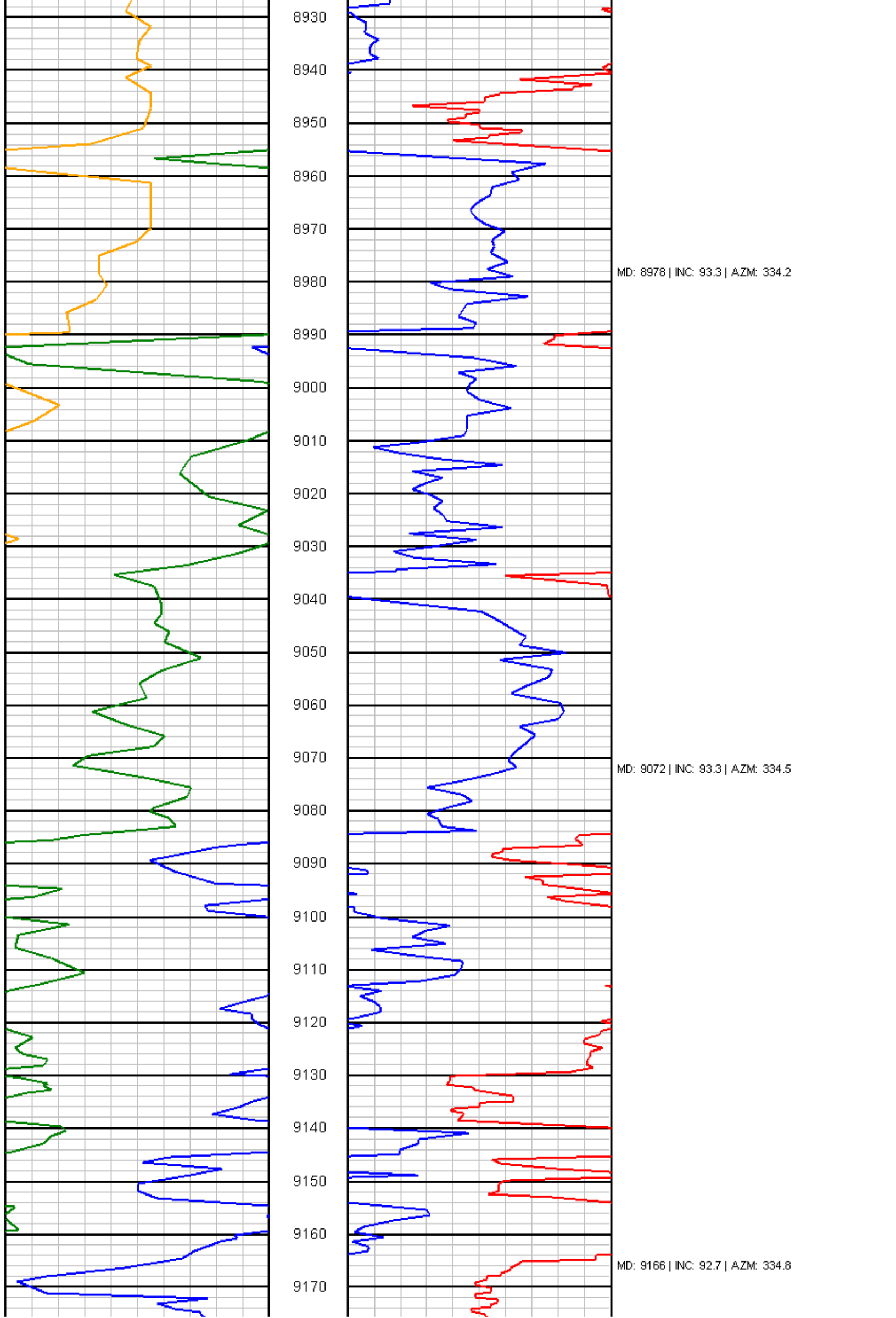


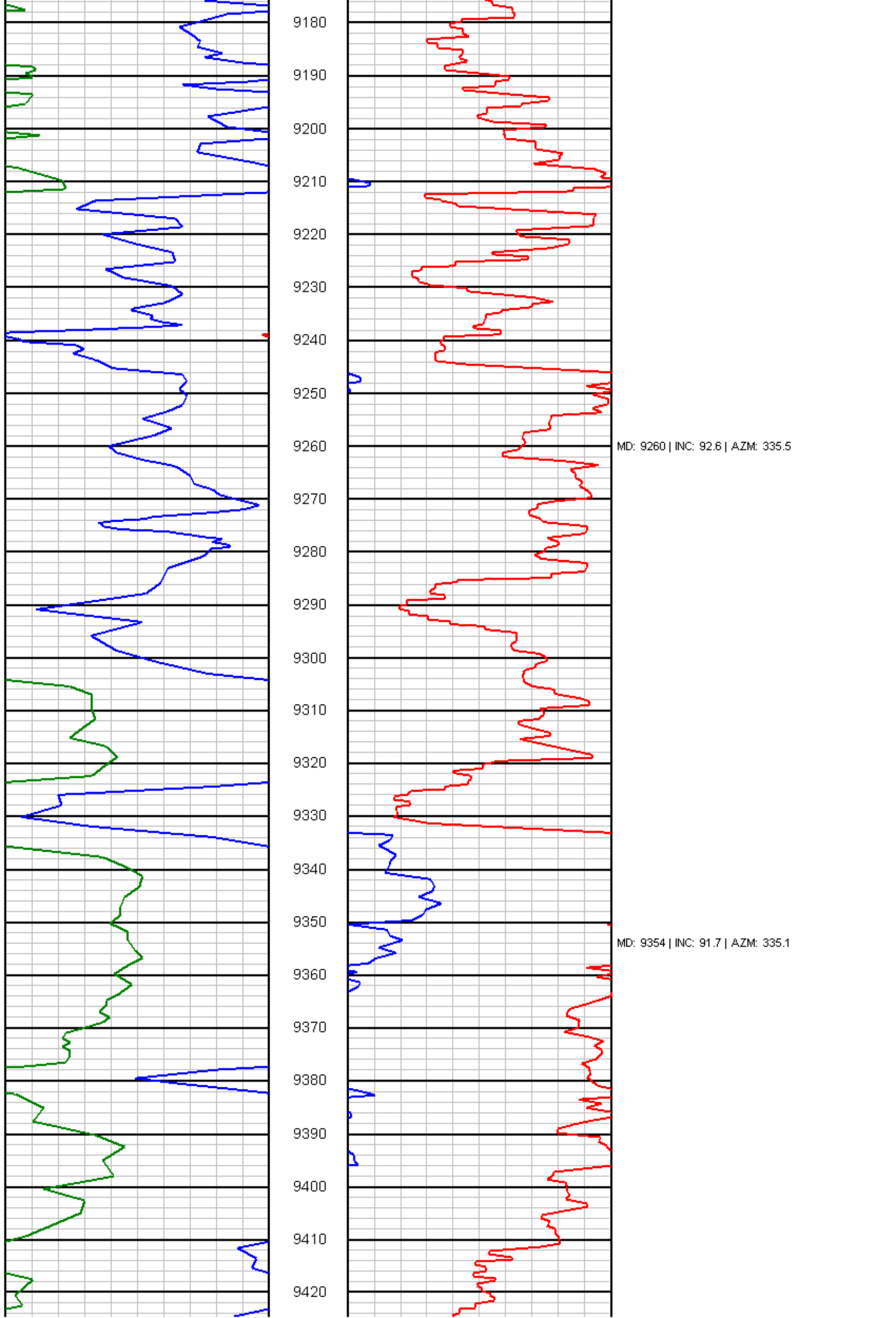


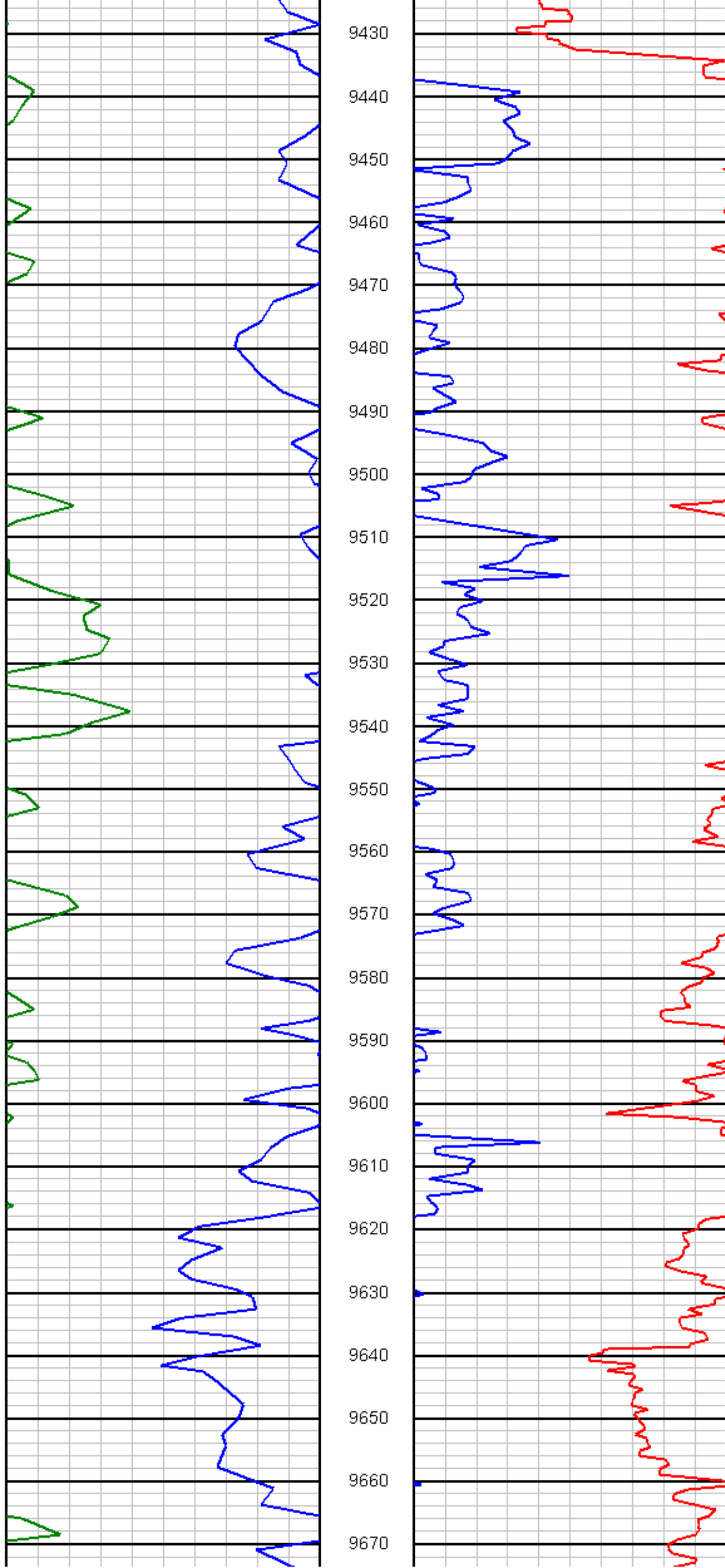
MD: 8696 | INC: 91.4 | AZM: 333.4

MD: 8790 | INC: 92.1 | AZM: 334

MD: 8884 | INC: 92 | AZM: 333.8



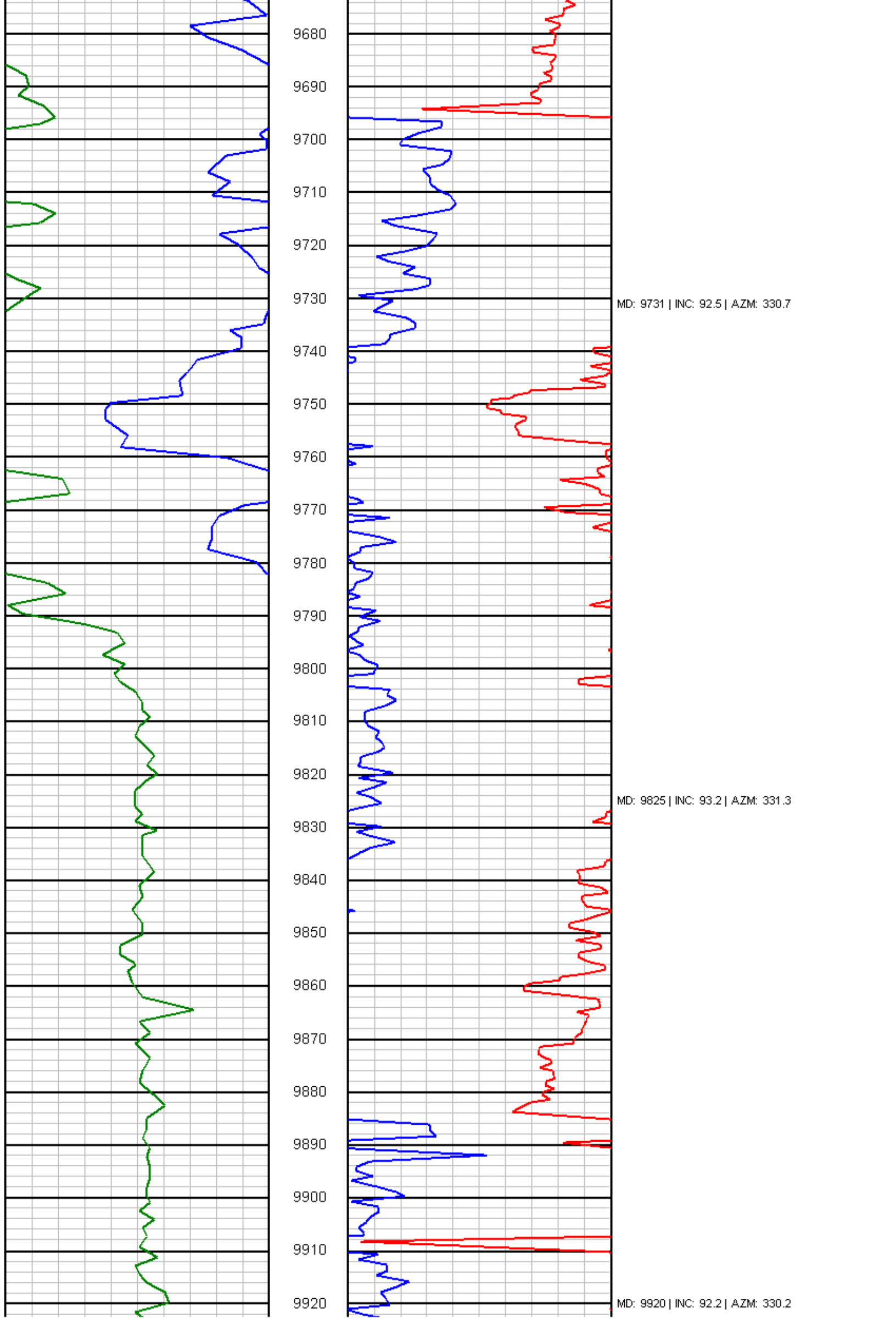


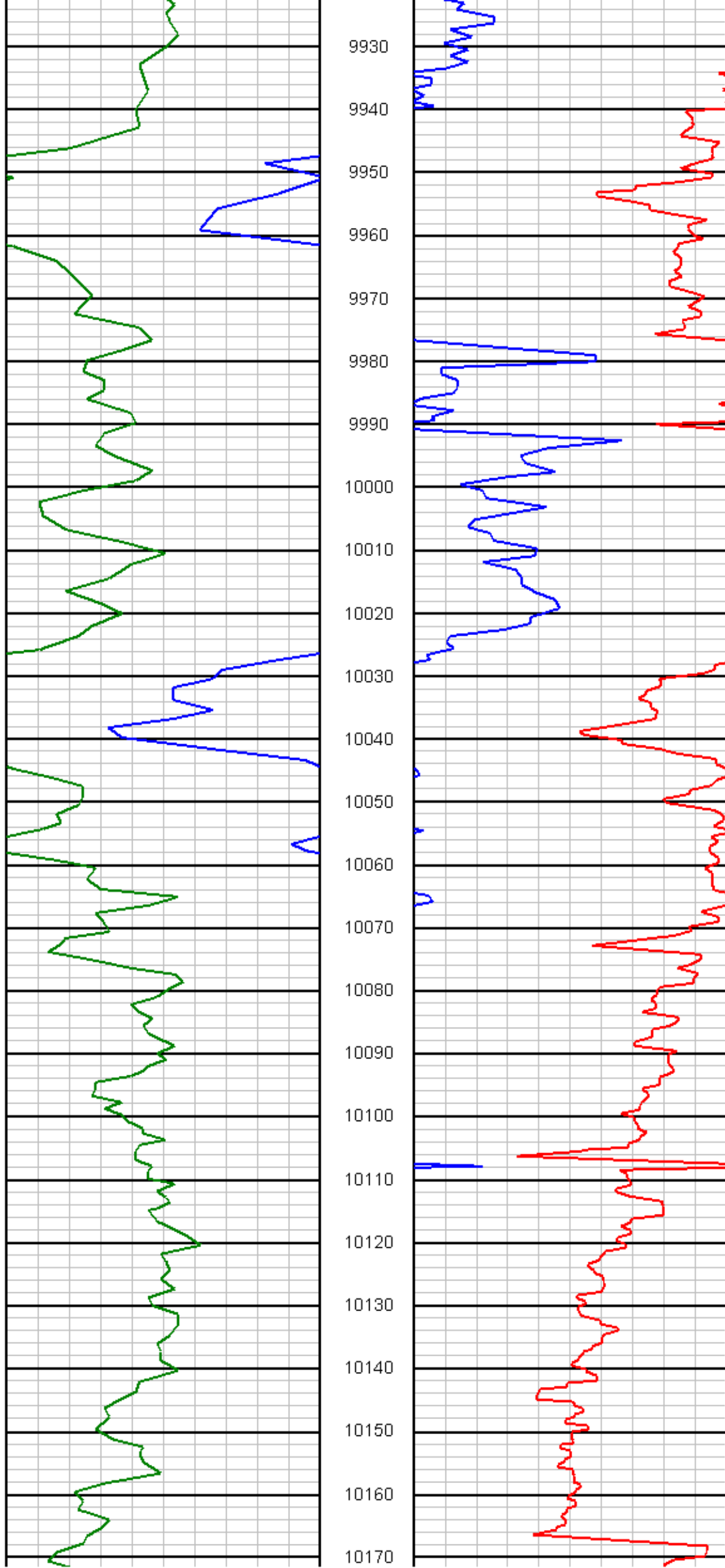


MD: 9448 | INC: 92.2 | AZM: 332.7

MD: 9543 | INC: 91.7 | AZM: 331.1

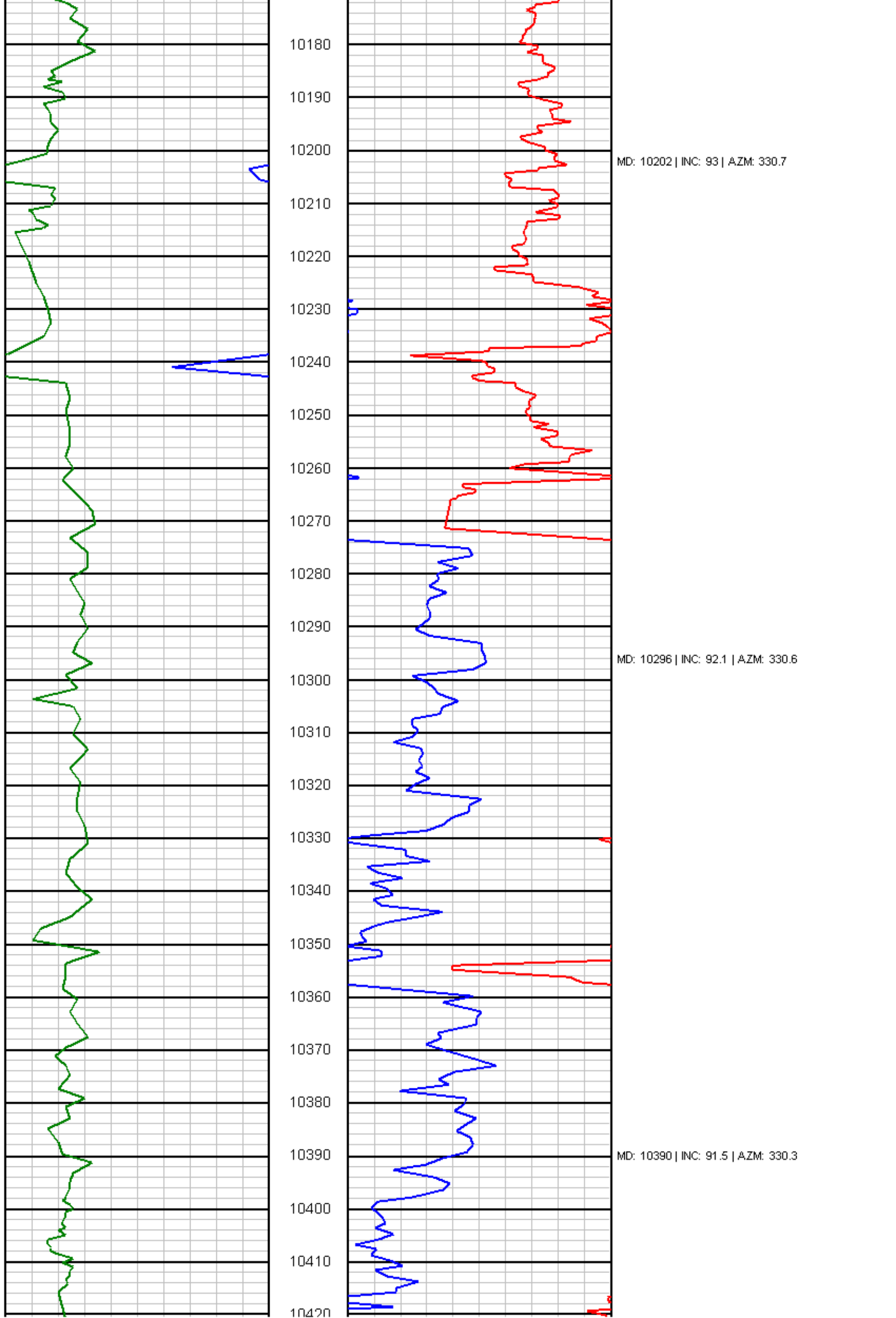
MD: 9637 | INC: 92.6 | AZM: 331.2





MD: 10014 | INC: 92 | AZM: 331.1

MD: 10108 | INC: 92.8 | AZM: 331



10180

10190

10200

10210

10220

10230

10240

10250

10260

10270

10280

10290

10300

10310

10320

10330

10340

10350

10360

10370

10380

10390

10400

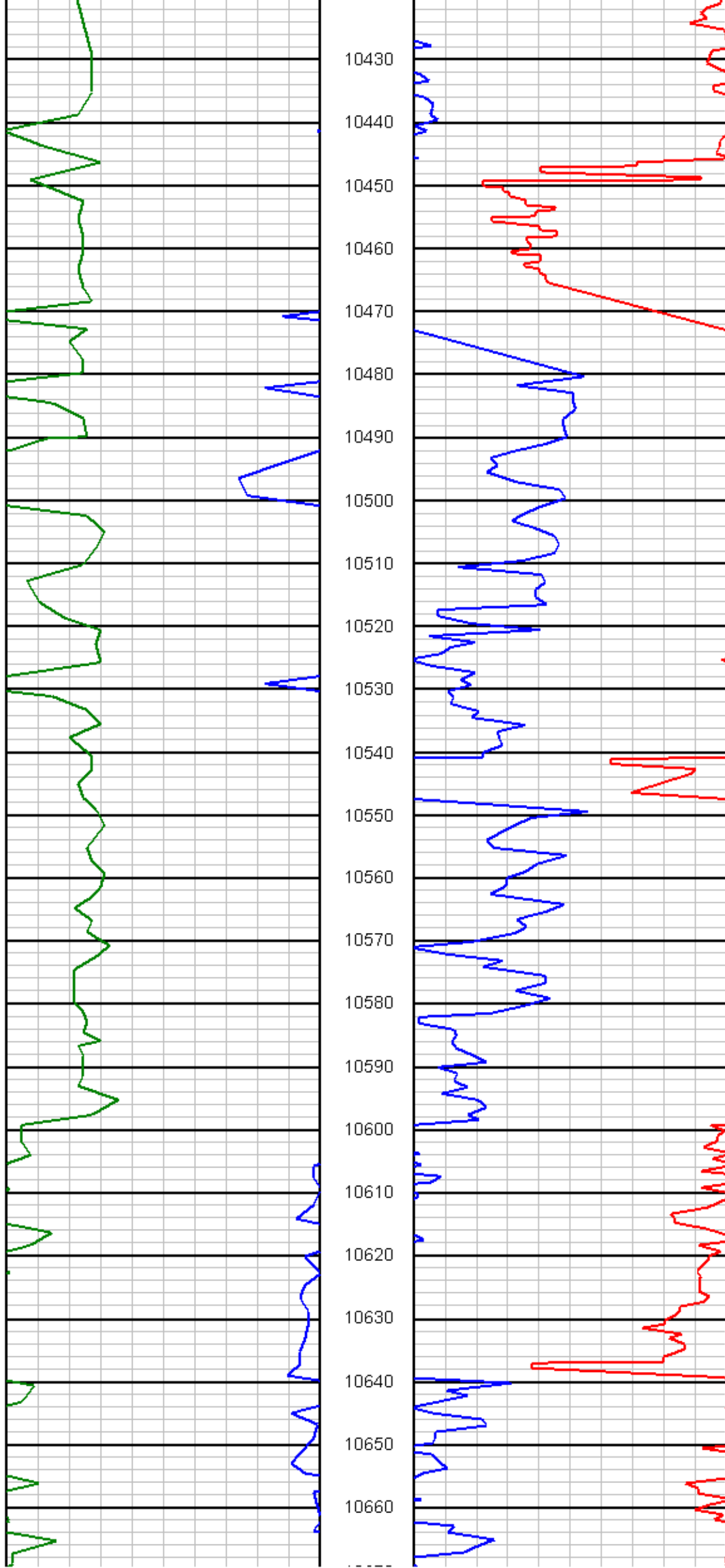
10410

10420

MD: 10202 | INC: 93 | AZM: 330.7

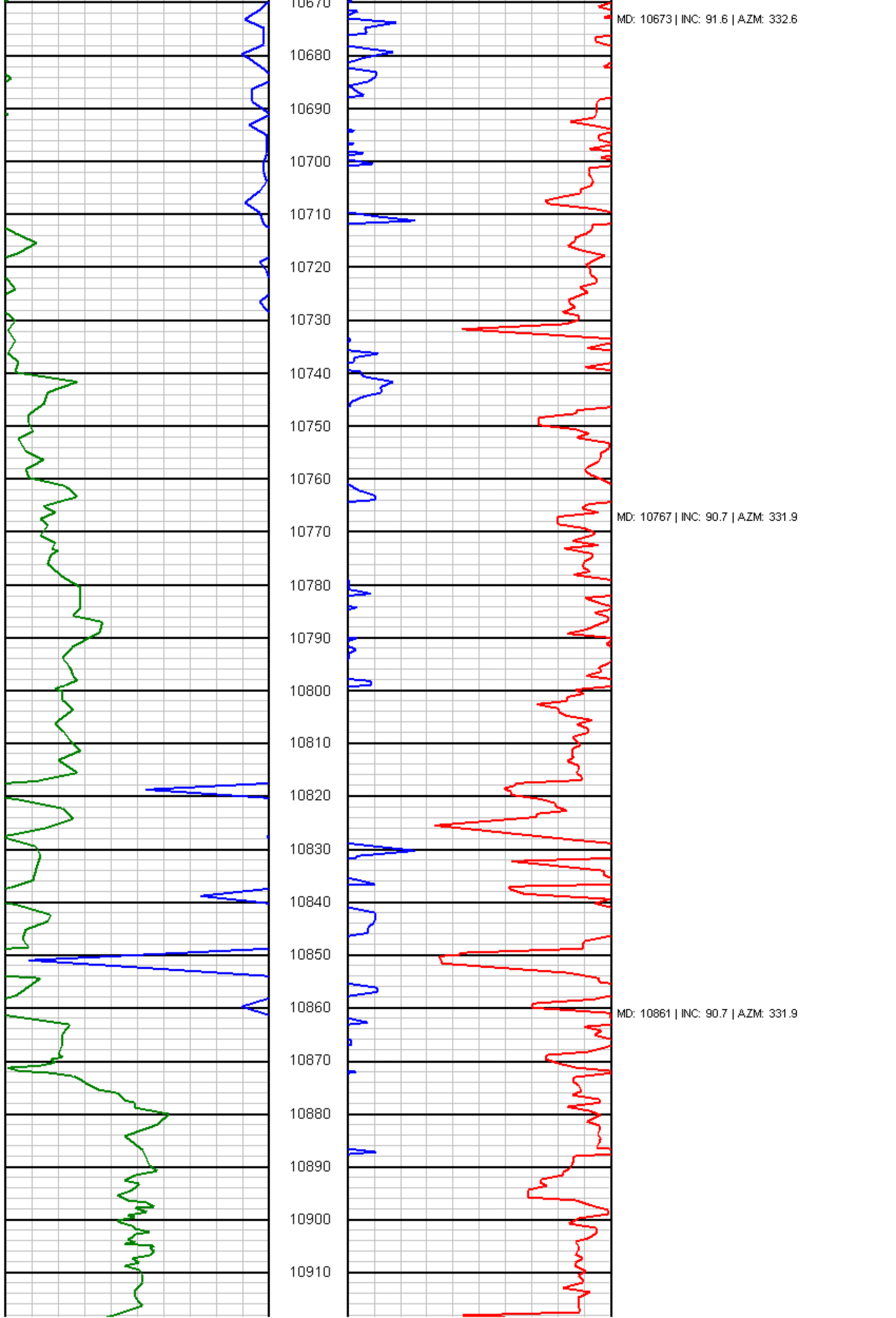
MD: 10296 | INC: 92.1 | AZM: 330.6

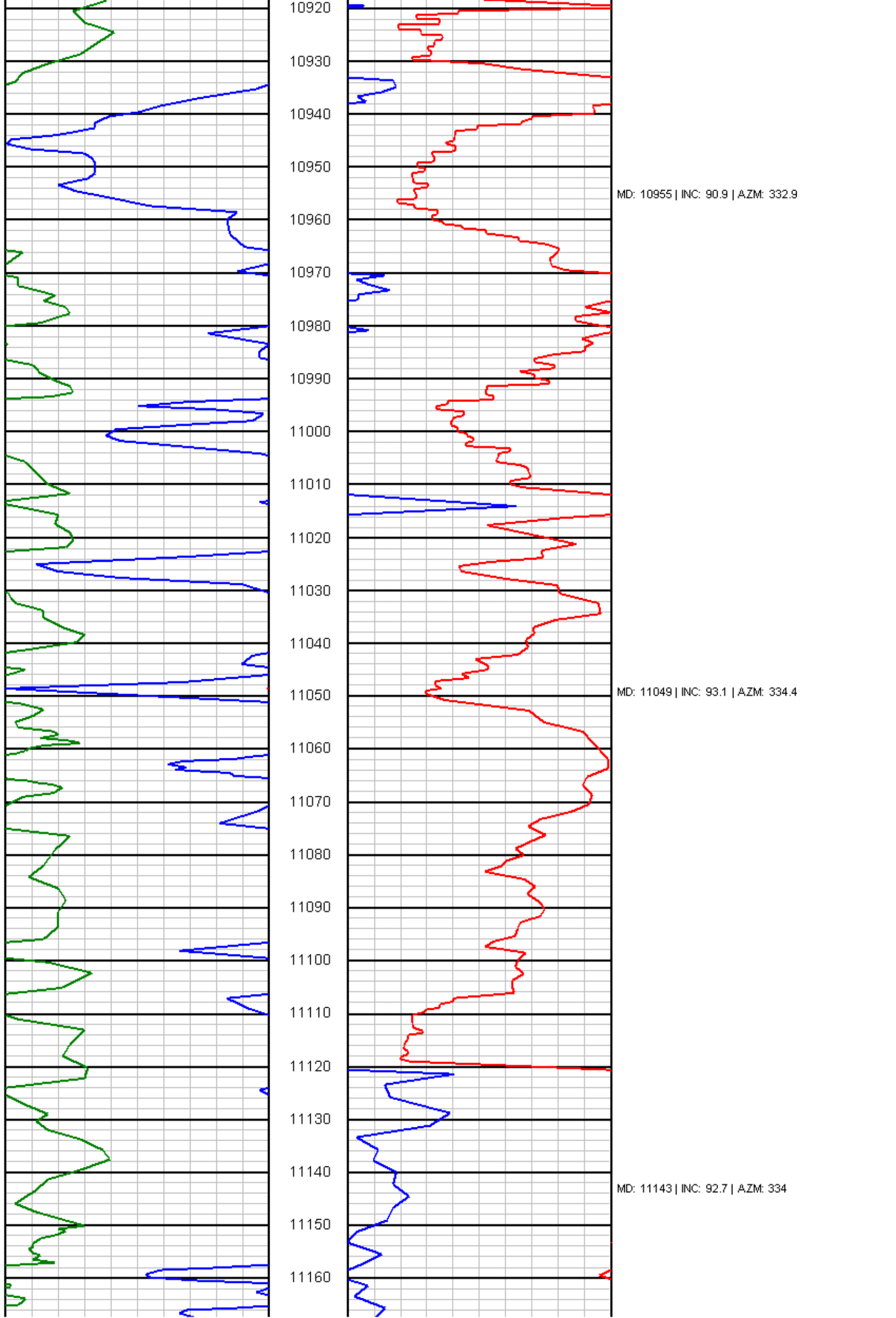
MD: 10390 | INC: 91.5 | AZM: 330.3

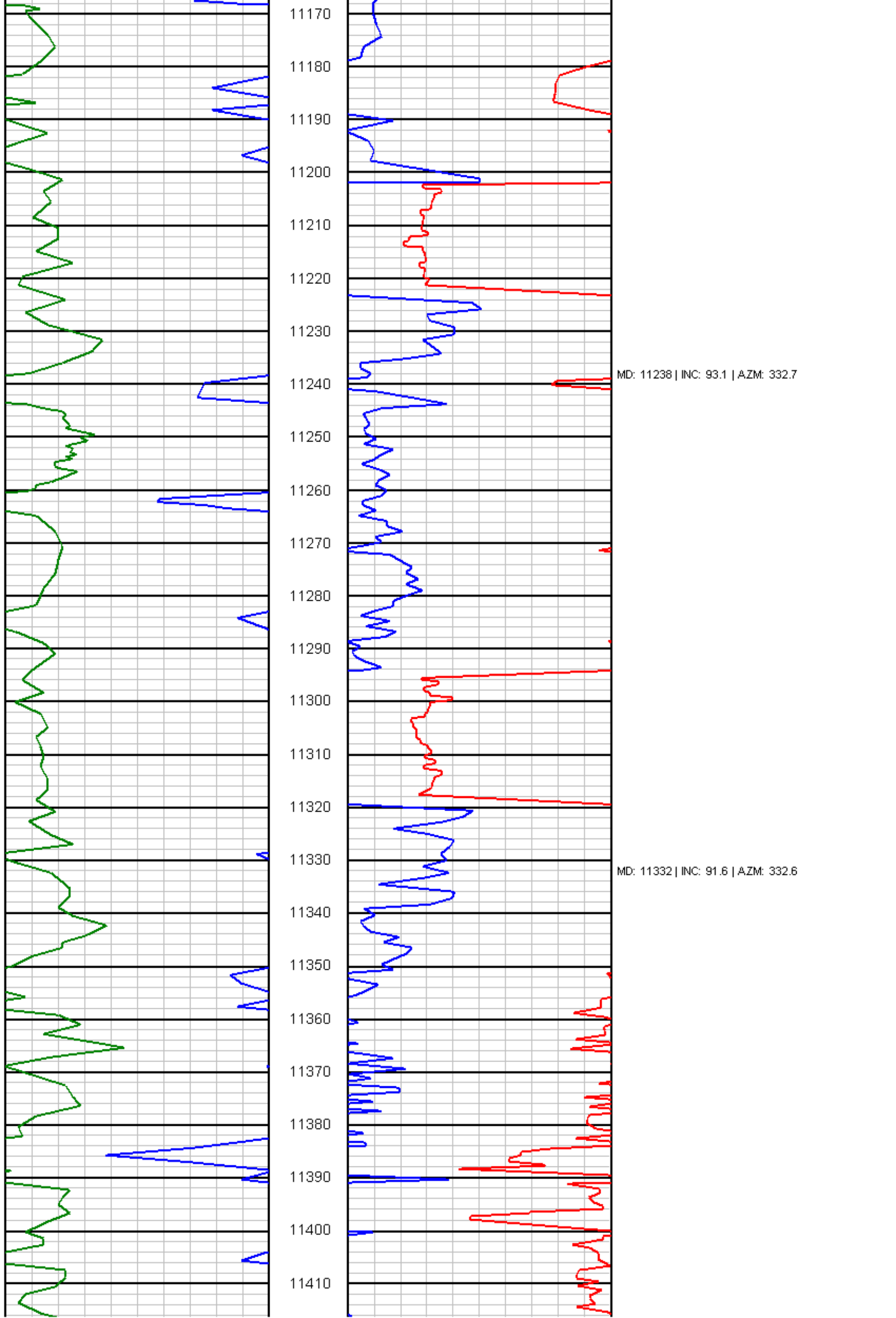


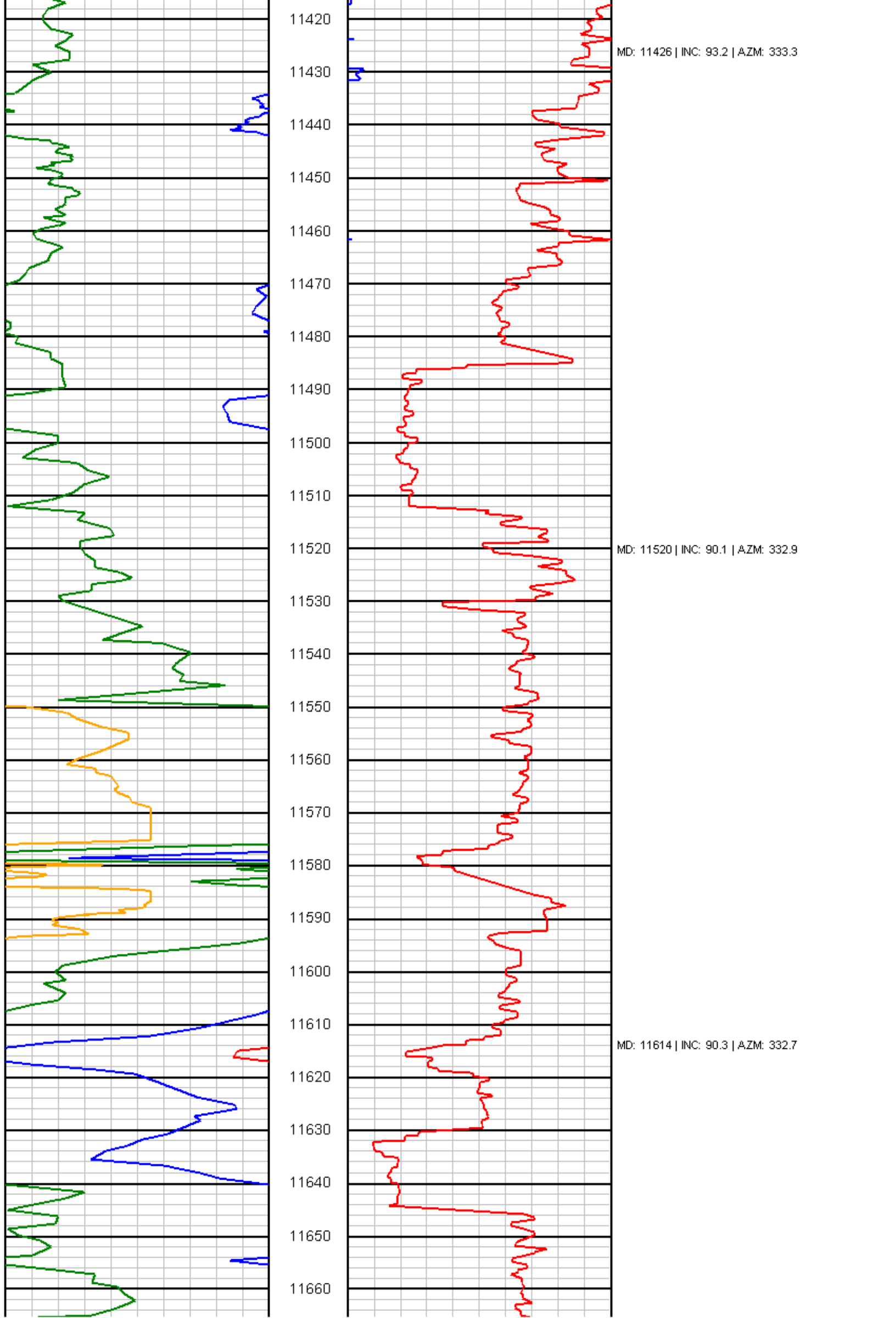
MD: 10485 | INC: 91.5 | AZM: 332

MD: 10579 | INC: 92 | AZM: 332.7





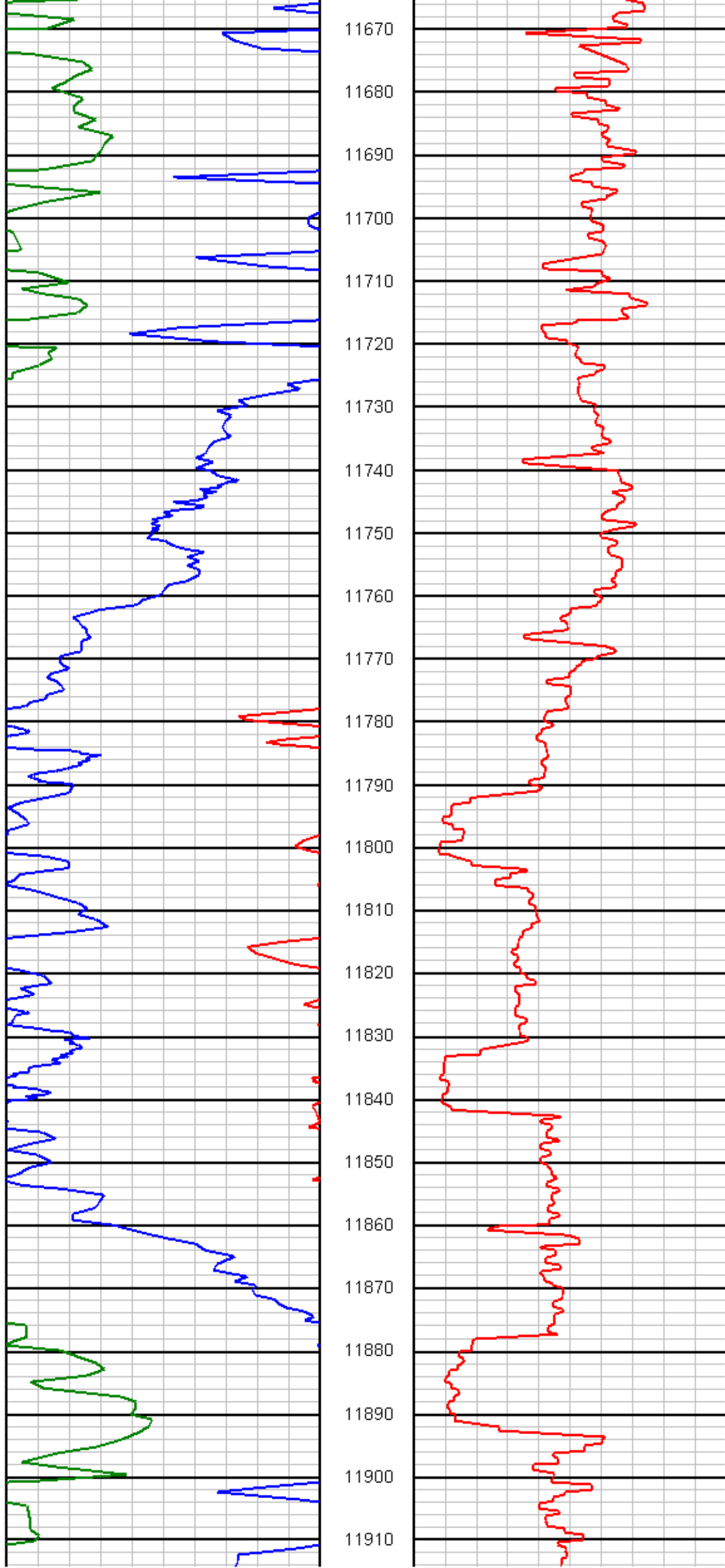




MD: 11426 | INC: 93.2 | AZM: 333.3

MD: 11520 | INC: 90.1 | AZM: 332.9

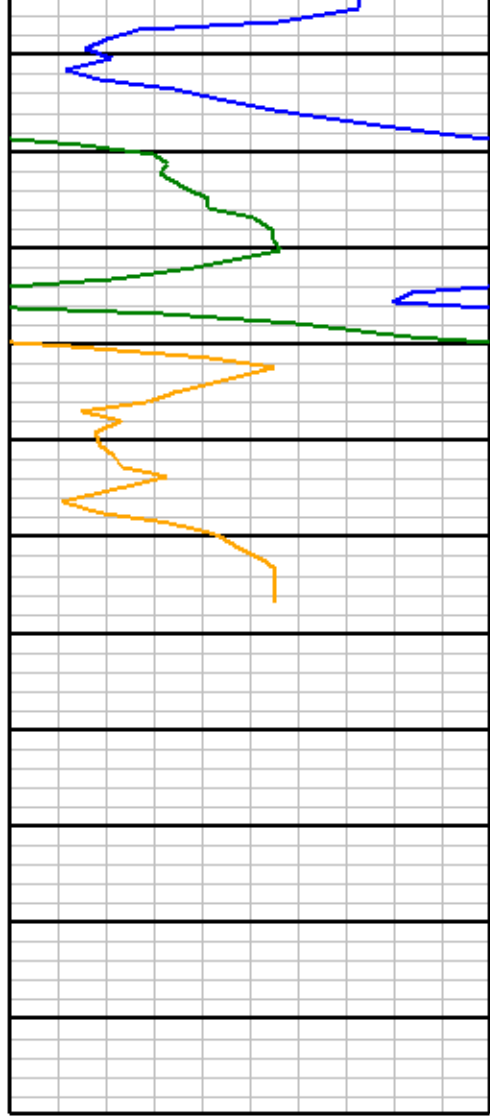
MD: 11614 | INC: 90.3 | AZM: 332.7



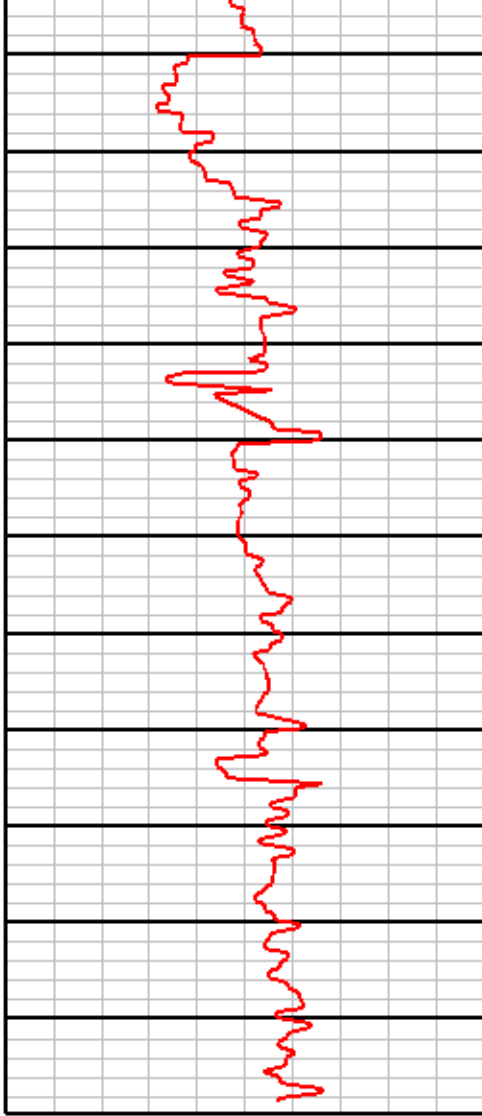
MD: 11708 | INC: 91.1 | AZM: 332.6

MD: 11803 | INC: 92.5 | AZM: 333.3

MD: 11897 | INC: 95.7 | AZM: 333.1



11920
11930
11940
11950
11960
11970
11980
11990
12000
12010
12020
12030



MD: 11969 | INC: 95.5 | AZM: 332.9

MD: 12029 | INC: 95.5 | AZM: 332.9