



PHOENIX TECHNOLOGY SERVICES

MD
1:240
Feet

Client: **FOT**
Well Name: **5115110**
County: **Rosemount**

MWD Gamma / ROP

Unique ID/API: **47-091-01211H**

Company Representative

Surface Location: **Taylor Co, WV**

Ken Braun / Dan Doebereine

Country: **US**

State: **West Virginia**

Geologist

Kevin Wolfe

Rig Name: **Patterson 622**

Latitude: **39°18'58.336"N**

Longitude: **80°9'46.262"W**

License/Permit#: **01211H**

Directional Drillers

Cody Barrick

Job No: **1130168 ST**

Matt Latreniere

Permanent Datum: **Mean Sea**

Drilling Measurement From: **Drill Floor**

GL: **1420** Feet

KB: **1443** Feet

Spud Date: **-**

MWD Operator

Print Date: **April 19, 2011**

Shawn Agren

Log Start Depth: **6530** Feet

Dan Westphal

Log End Depth: **12080** Feet

Bottom Hole Temp: **165.2 °F**

Comments:

Leg Name
Main Leg

PHOENIX TECHNOLOGY SERVICES LP ("PHOENIX") DOES NOT MAKE AND EXPRESSLY DISCLAIMS ALL WARRANTIES, REPRESENTATIONS AND CONDITIONS, WITH RESPECT TO THE INFORMATION CONTAINED IN THIS DOCUMENT, WHETHER ORAL OR WRITTEN, EXPRESS OR IMPLIED OR ARISING FROM CONTRACT OR STATUTE INCLUDING, WITHOUT LIMITATION, THE IMPLIED WARRANTIES OF MERCHANTABILITY, ACCURACY AND FITNESS FOR A PARTICULAR PURPOSE. ANYONE USING THIS INFORMATION DOES SO AT THEIR OWN RISK AND ACKNOWLEDGES AND AGREES THAT PHOENIX SHALL NOT BE LIABLE FOR ANY ERROR, OMISSION, DEFECT, DELAY, INACCURACY OR NONCOMPLIANCE IN THE INFORMATION AND WITHOUT LIMITING THE FOREGOING, PHOENIX DOES NOT WARRANT THAT THE INFORMATION OR THE USE THEREOF WILL BE FREE OF ALL ERRORS OR THAT IT DOES NOT INFRINGE ANY THIRD PARTY RIGHTS. ANYONE USING THE INFORMATION AGREES TO INDEMNIFY AND HOLD PHOENIX HARMLESS FROM ALL CLAIMS, ACTIONS, COSTS (INCLUDING LEGAL COSTS) OR A SCHEDULED AND UNKNOWN CLIENT BASIS, AND LIABILITIES ARISING FROM OR IN CONNECTION WITH THE USE OF THE INFORMATION.

BitRun:	1	2	3
Start Depth (ft):	6530	7272.7	7610
End Depth (ft):	7272.7	7610	12077
Start Date:		2011.04/13	2011.04/14
End Date:	2011.04/13	2011.04/14	2011.04/19
Gamma Scale Factor:	3.700	3.700	3.700
Stoney-b-Bit (PTB):	42	42	43
Gamma-b-Bit (GTB):	37	37	38
Tool Carrier ID (ft):	2875	2875	2875
Tool Carrier OD (ft):	5	5	5
Hole Size (ft):	8.5	8.5	8.5
Casing Size (ft):	9.625	9.625	9.625
Casing Start Depth (ft):	0	0	0
Casing End Depth (ft):	2488	2488	2488
Mud Type:	Water based	Water based	Water based
Mud Weight (lb/gal):	12.0	12.0	12
Mud Viscosity:	44	44	44
KCL Correction Factor:	0.003	0.003	0.003
Mud KCL Content (%):	0.001	0.001	0.001
Comment:	-	-	-

BitRun:			
Start Depth (ft):			
End Depth (ft):			
Start Date:			
End Date:			
Gamma Scale Factor:			
Stoney-b-Bit (PTB):			
Gamma-b-Bit (GTB):			
Tool Carrier ID (ft):			
Tool Carrier OD (ft):			
Hole Size (ft):			
Casing Size (ft):			
Casing Start Depth (ft):			
Casing End Depth (ft):			
Mud Type:			
Mud Weight (lb/gal):			
Mud Viscosity:			
KCL Correction Factor:			
Mud KCL Content (%):			
Comment:			

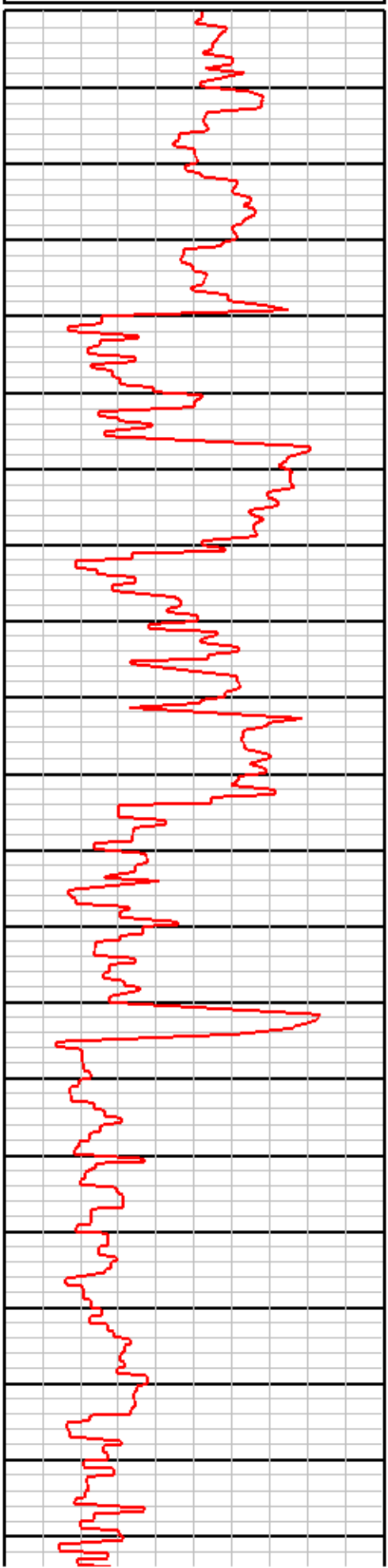
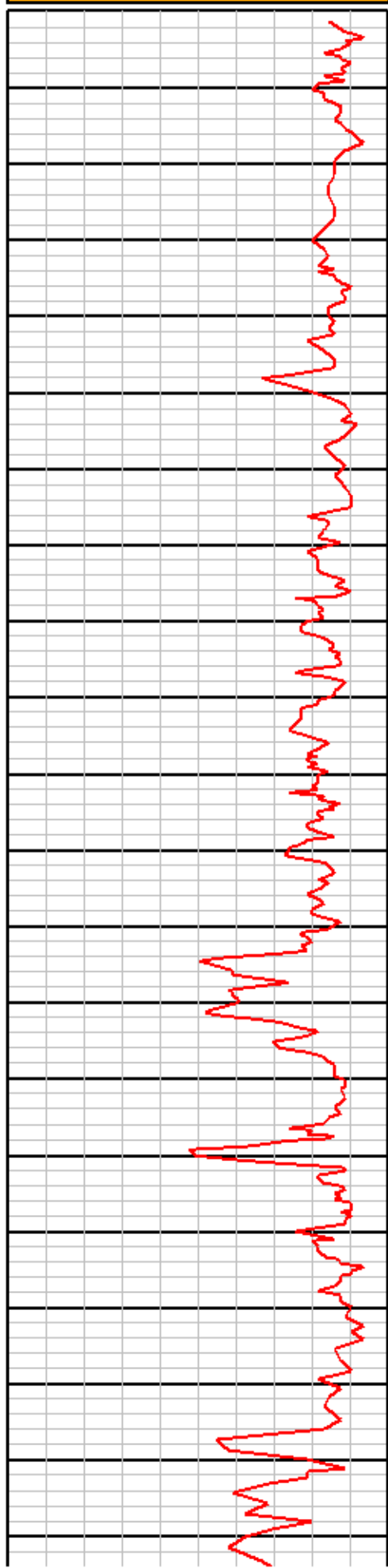


EQT
511510
Taylor Co, WV
1130168 ST

MD
1:240
Feet

0	Gamma (API)	250
250	Gamma (API)	500
500	Gamma (API)	750
750	Gamma (API)	1000

0	ROP (ft/hr)	150
150	ROP (ft/hr)	300



MD: 6538
INC: 0.6
AZM: 108.9

MD: 6557
INC: 5.5
AZM: 77

MD: 6589
INC: 5.8
AZM: 95.6

MD: 6621
INC: 7.2
AZM: 106.6

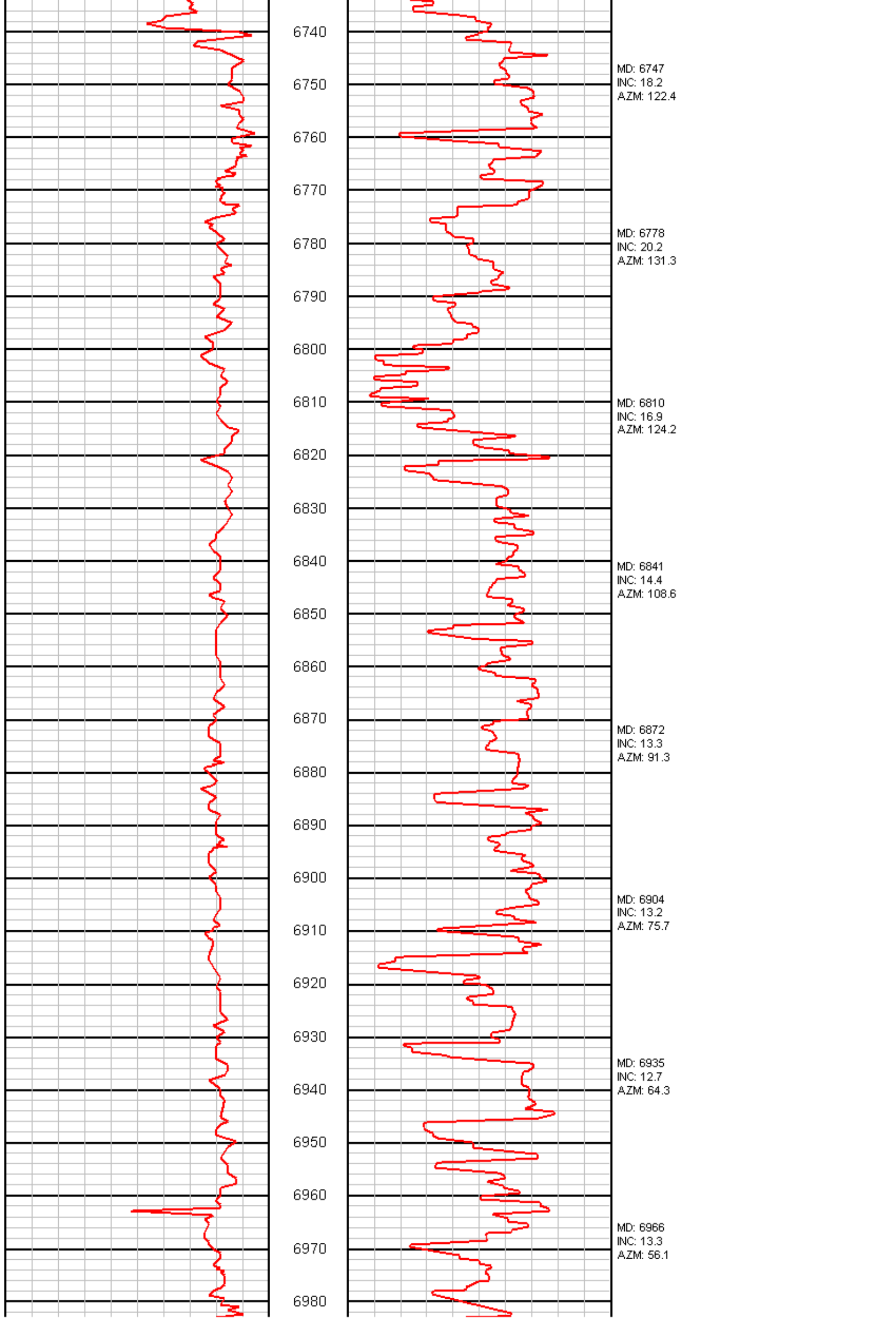
MD: 6652
INC: 9.5
AZM: 107.6

MD: 6684
INC: 12.7
AZM: 111.4

MD: 6715
INC: 16
AZM: 115.6



PHOENIX
TECHNOLOGY SERVICES



6740

MD: 6747
INC: 18.2
AZM: 122.4

6750

6760

6770

6780

MD: 6778
INC: 20.2
AZM: 131.3

6790

6800

6810

MD: 6810
INC: 16.9
AZM: 124.2

6820

6830

6840

MD: 6841
INC: 14.4
AZM: 108.6

6850

6860

6870

MD: 6872
INC: 13.3
AZM: 91.3

6880

6890

6900

MD: 6904
INC: 13.2
AZM: 75.7

6910

6920

6930

MD: 6935
INC: 12.7
AZM: 64.3

6940

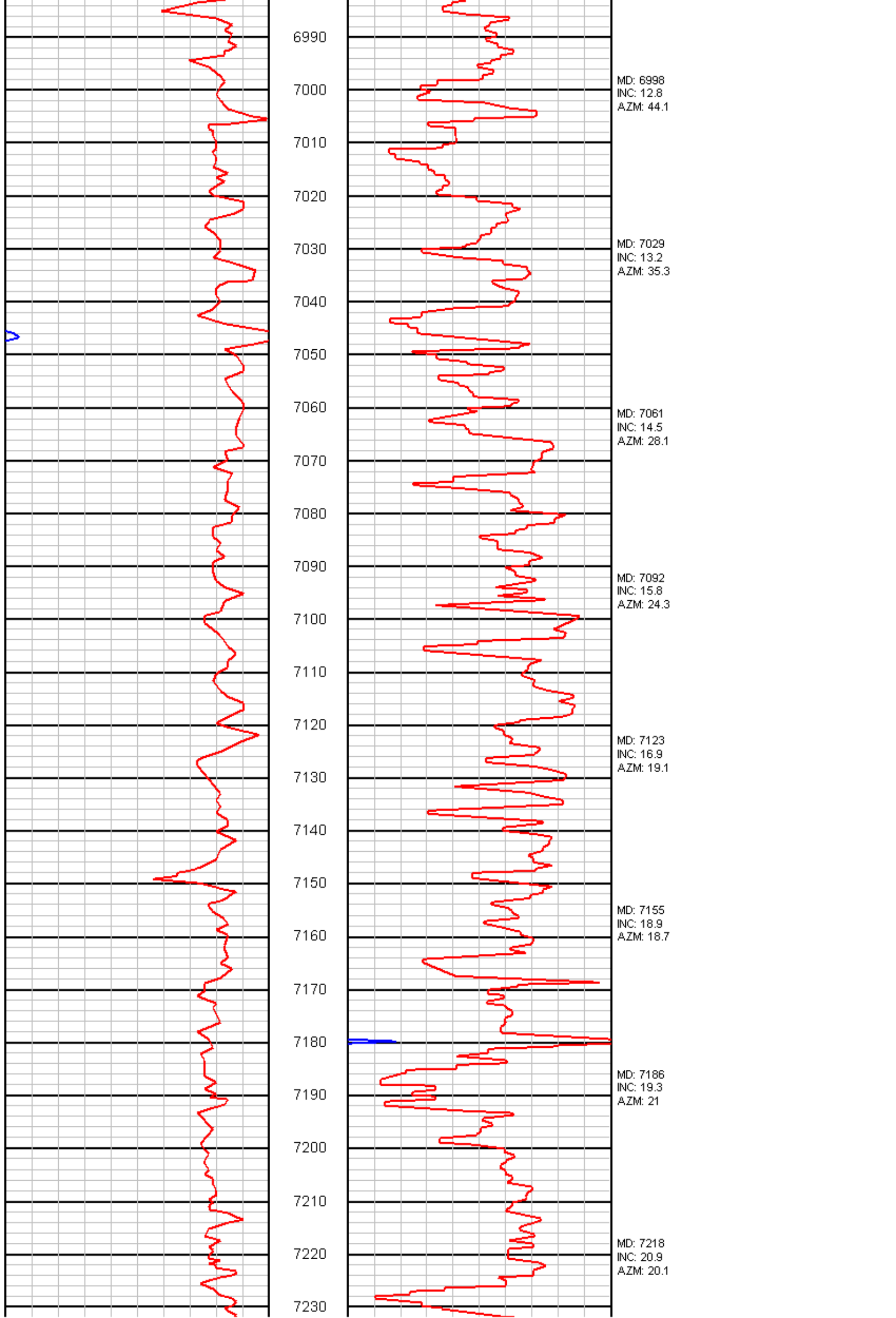
6950

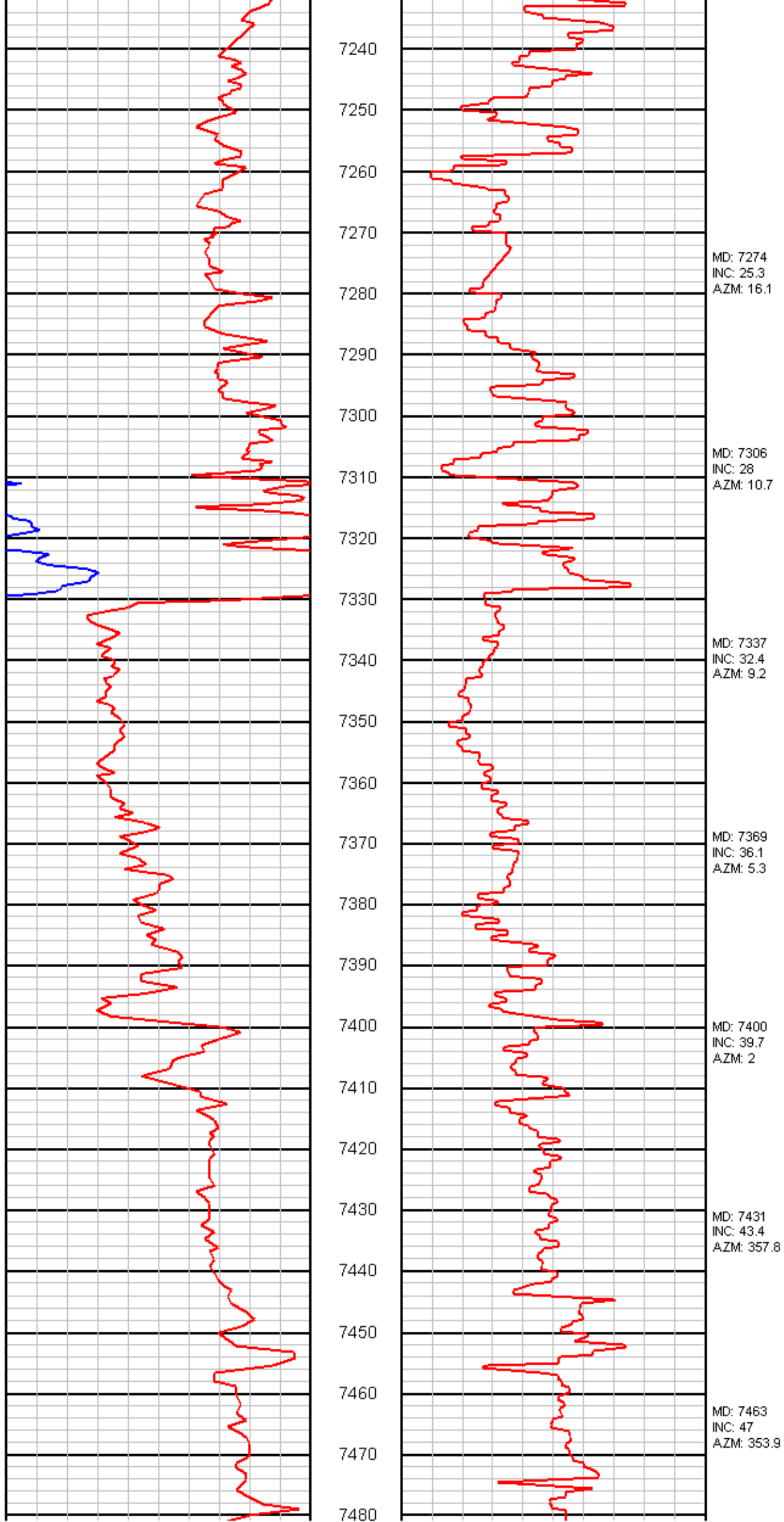
6960

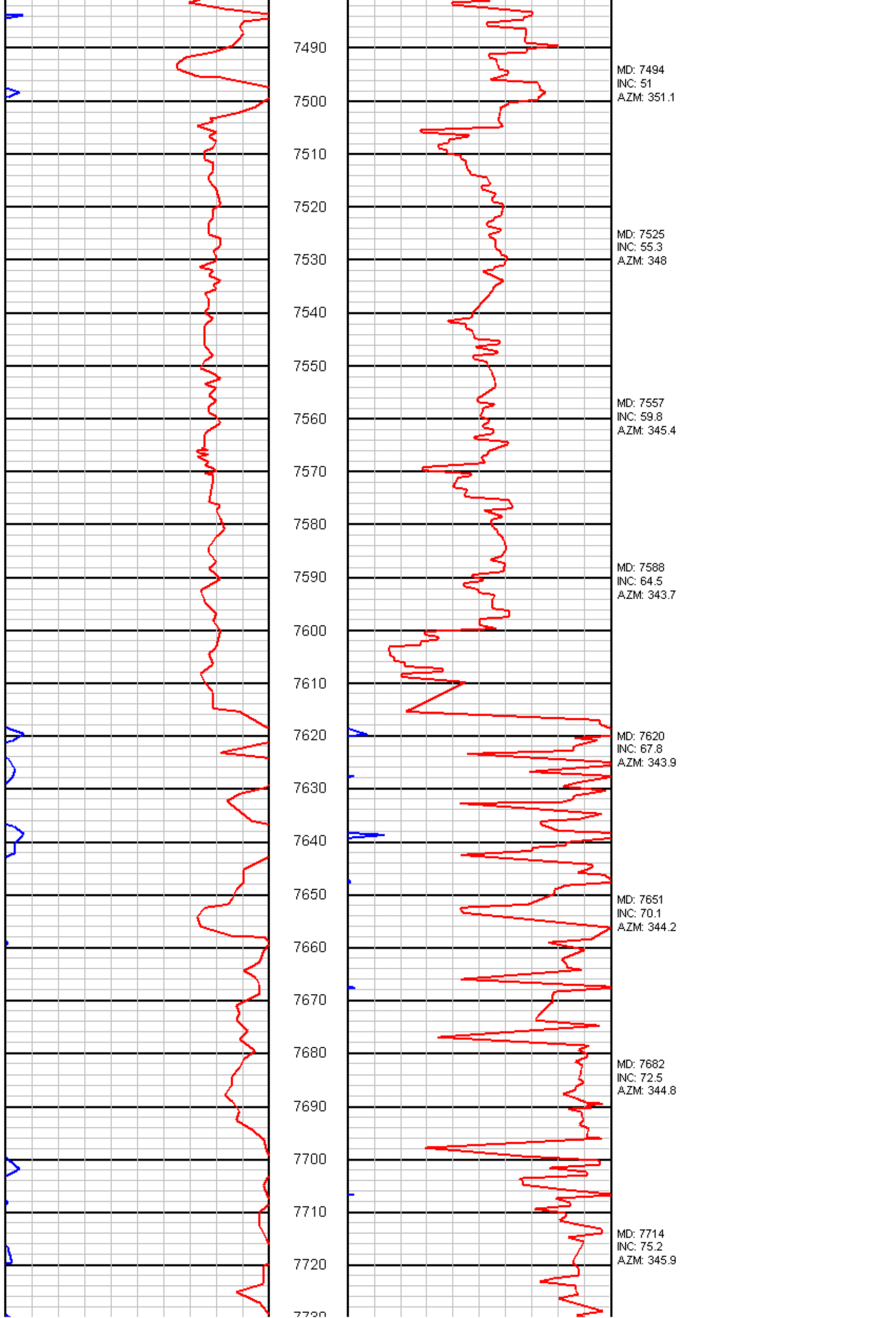
MD: 6966
INC: 13.3
AZM: 56.1

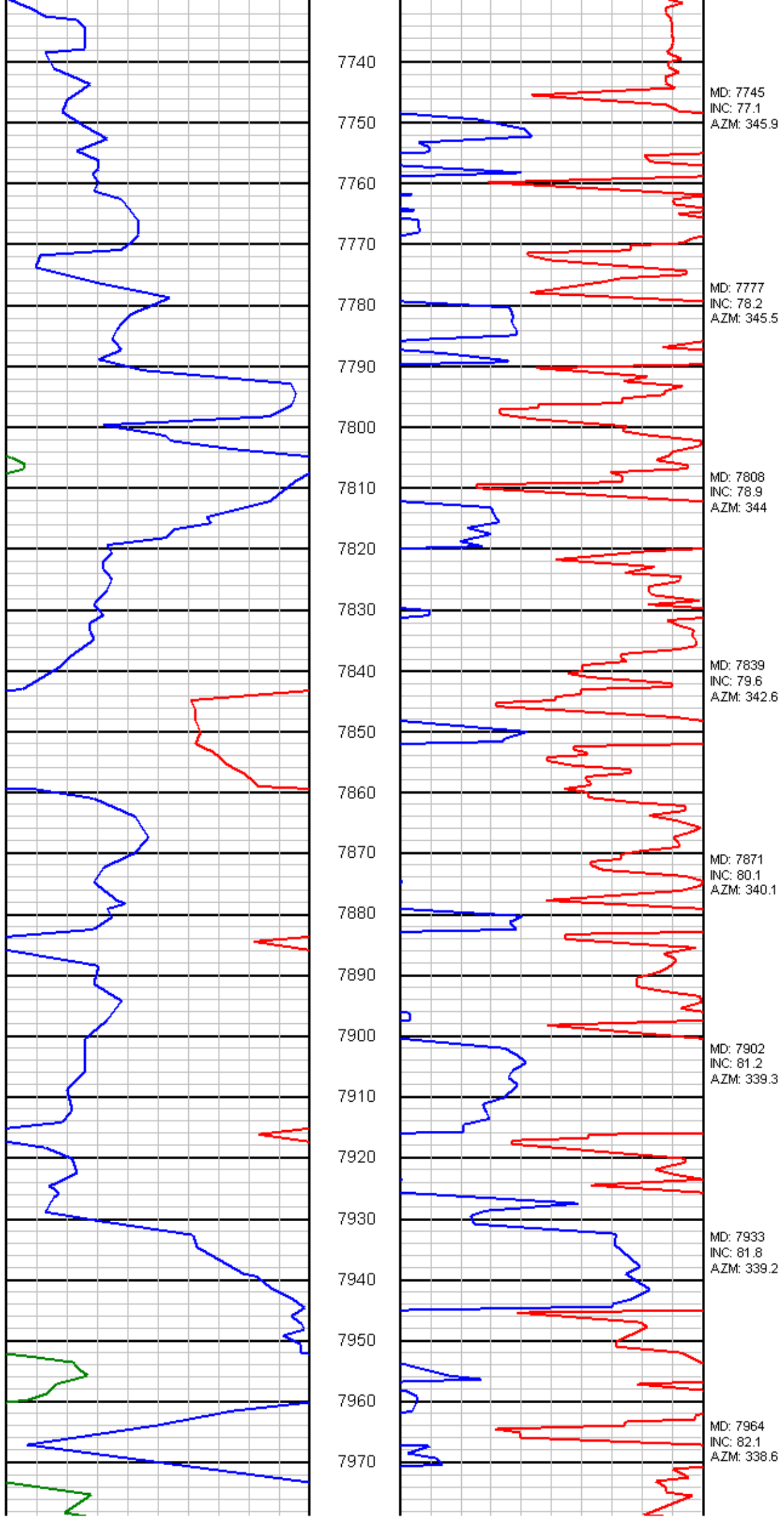
6970

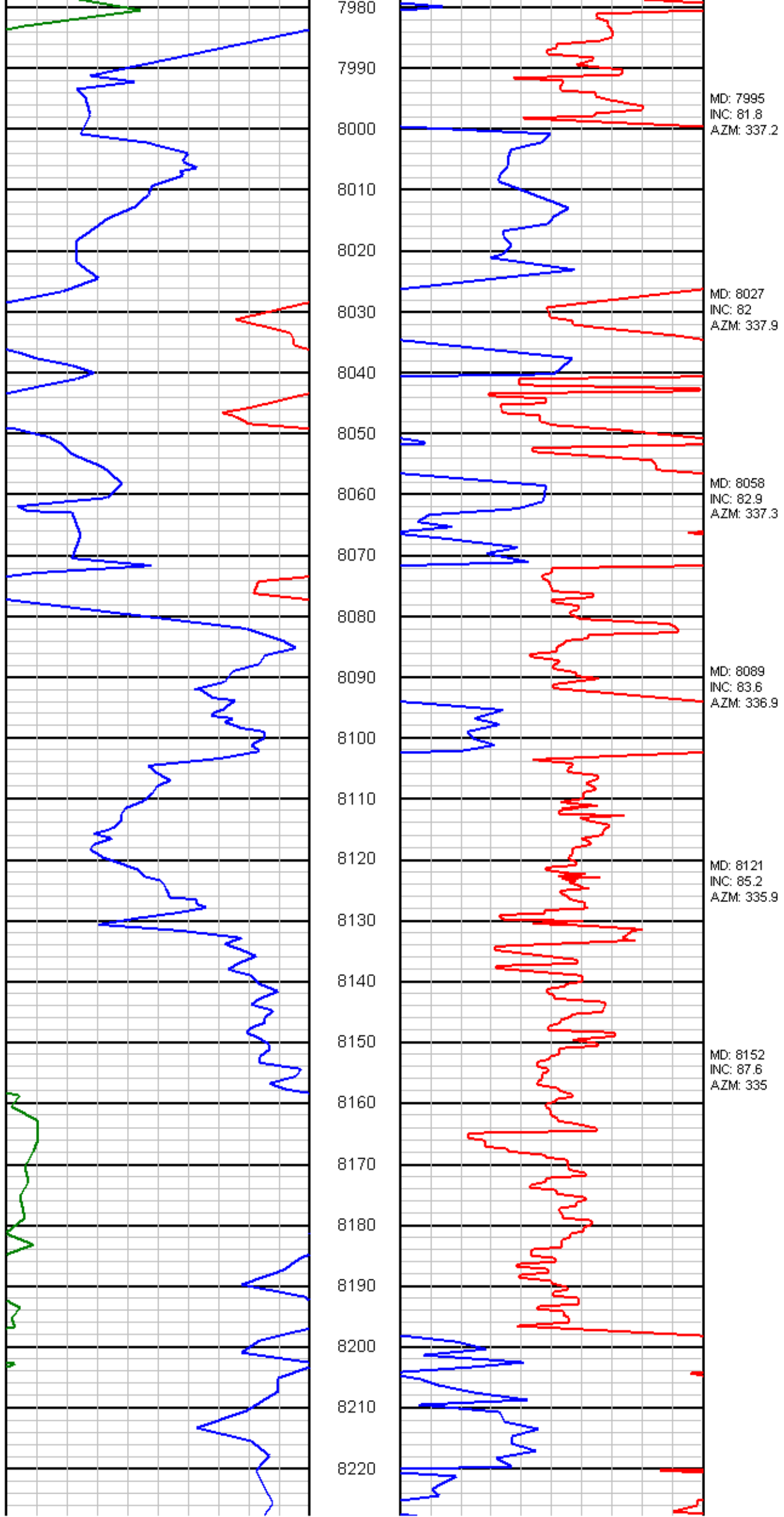
6980

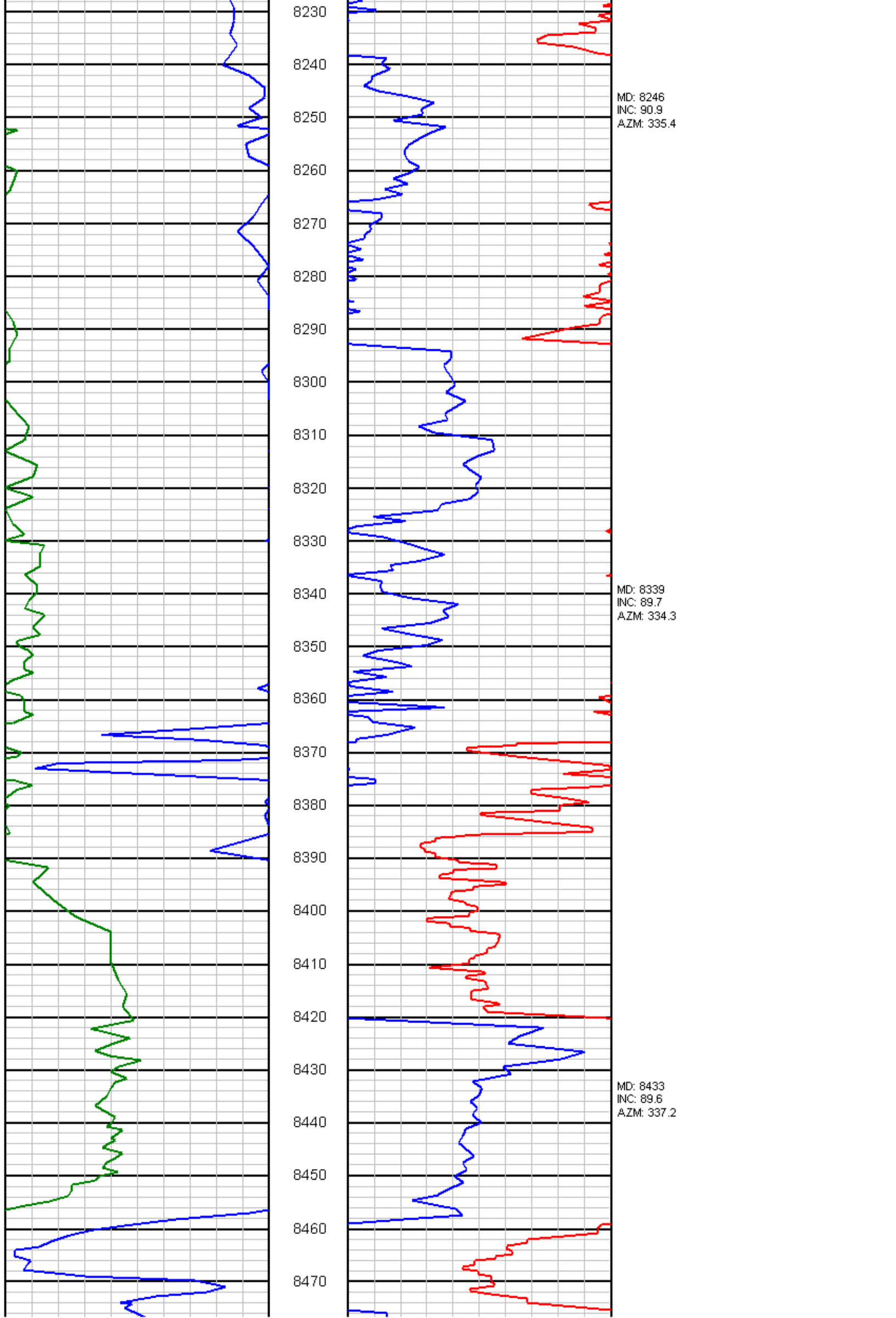


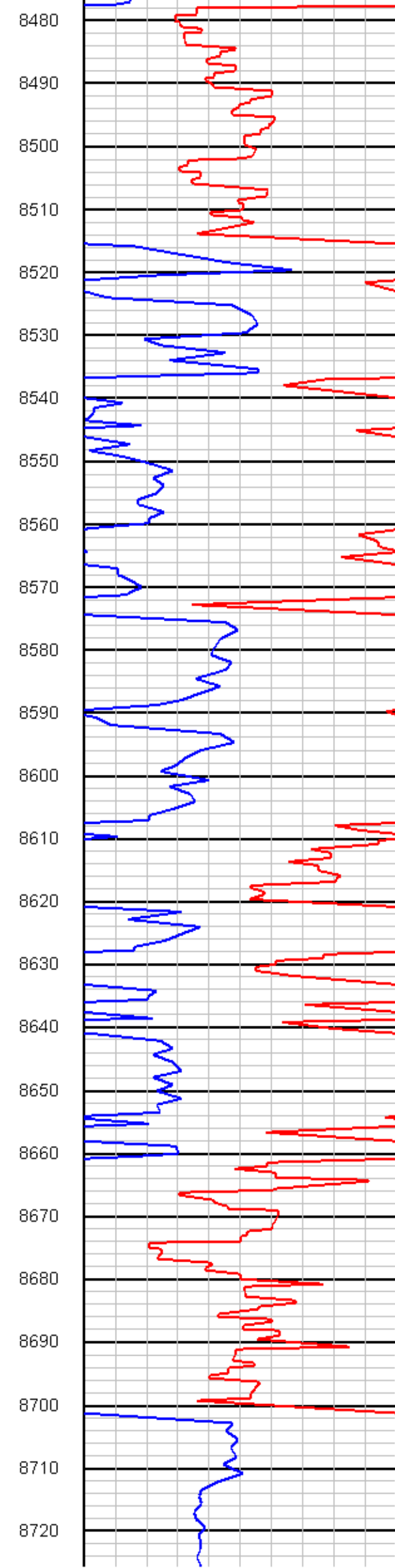
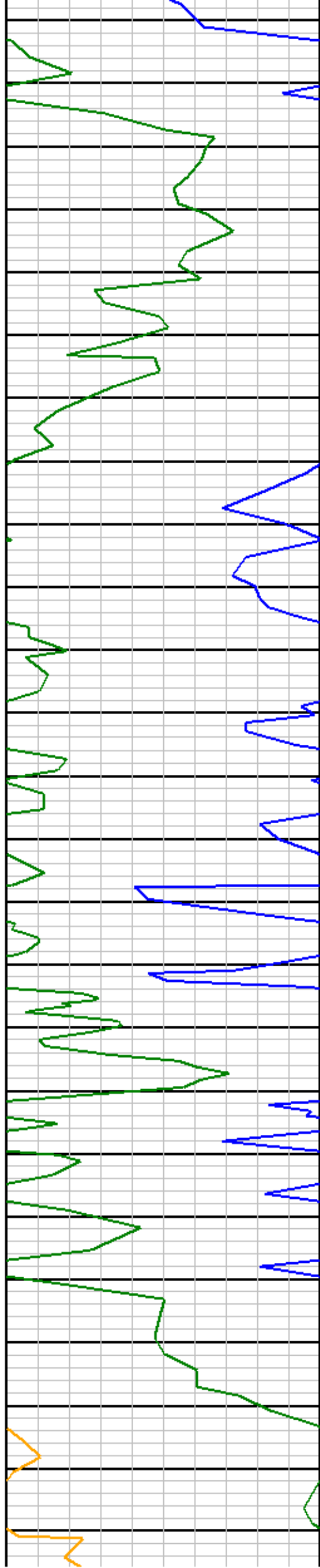








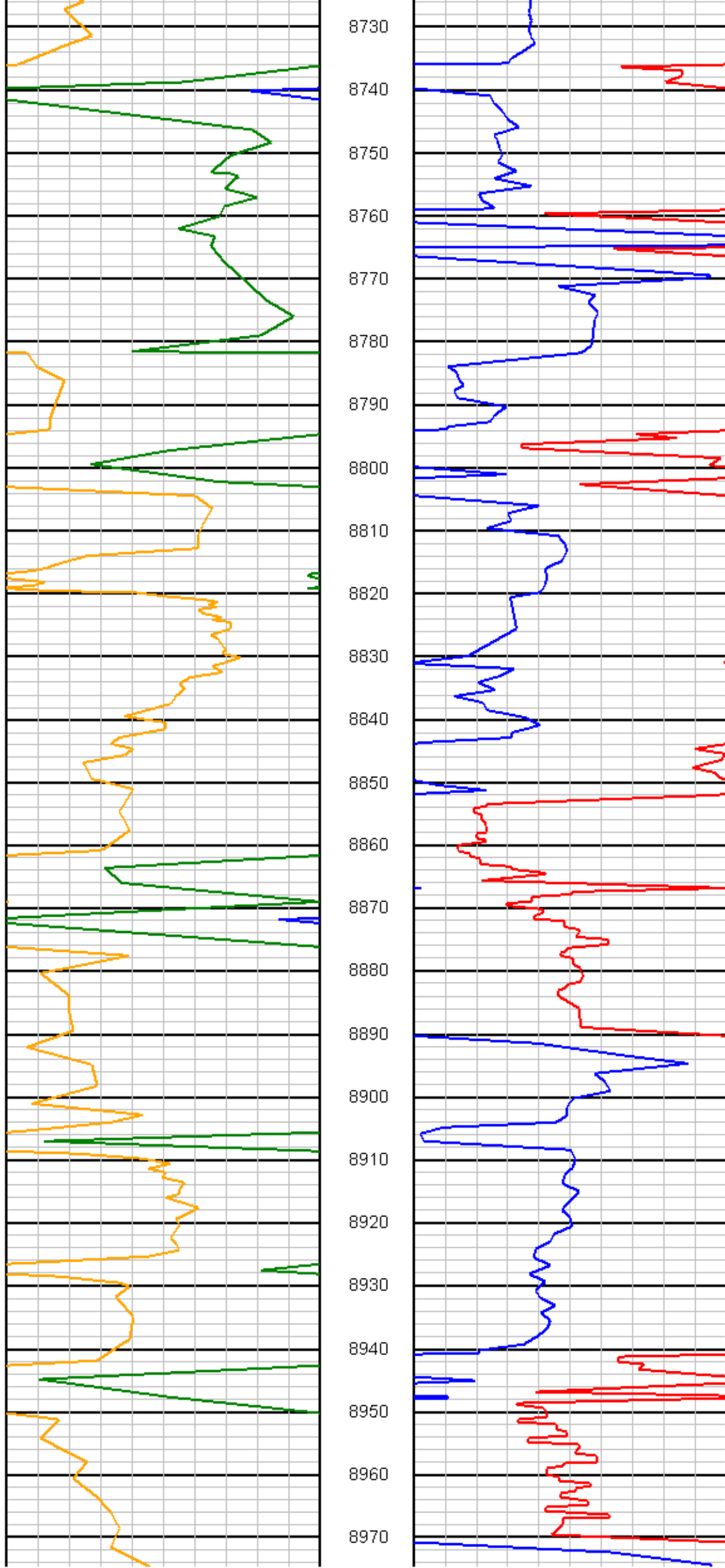




MD: 8527
INC: 91.2
AZM: 339

MD: 8621
INC: 90.5
AZM: 338.6

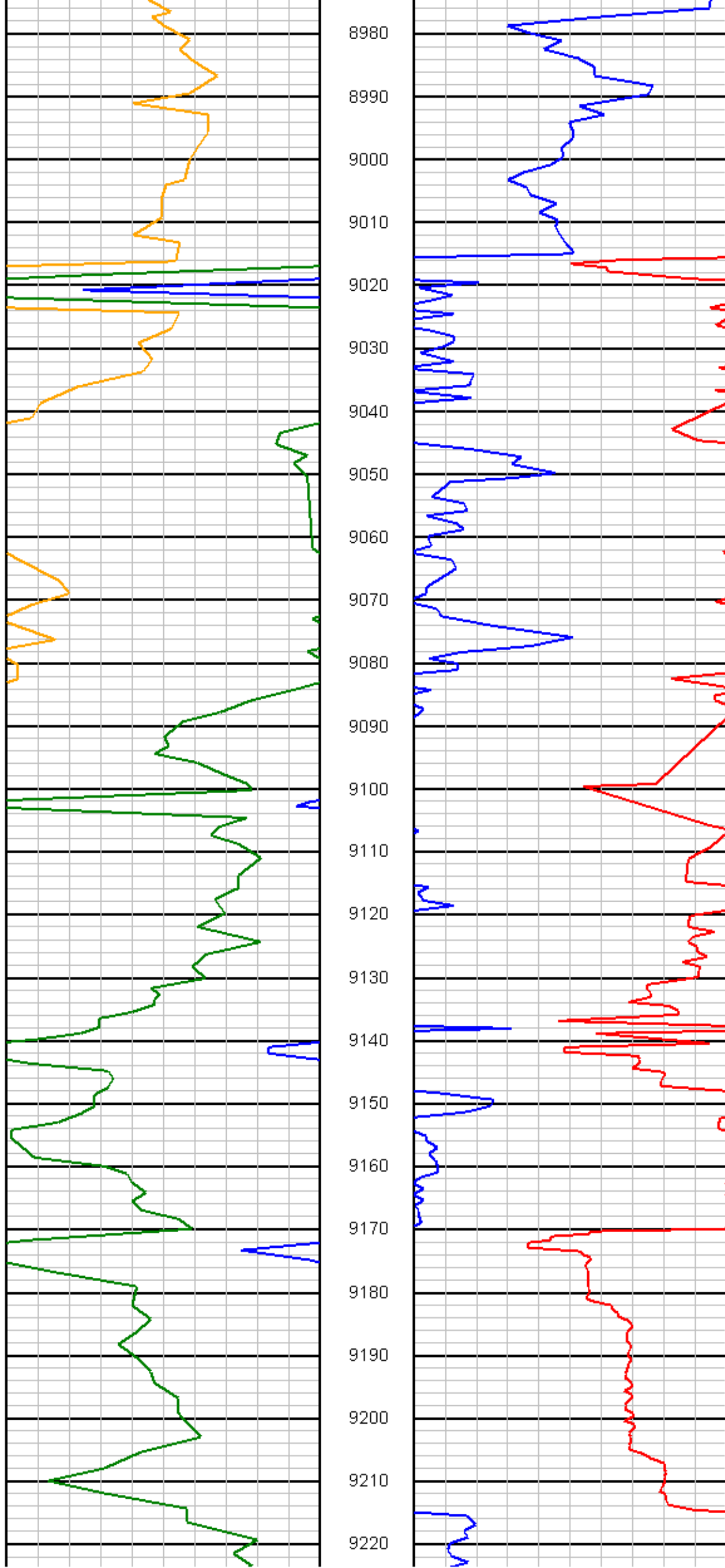
MD: 8716
INC: 90.3
AZM: 340.1



8730
8740
8750
8760
8770
8780
8790
8800
8810
8820
8830
8840
8850
8860
8870
8880
8890
8900
8910
8920
8930
8940
8950
8960
8970

MD: 8810
INC: 90.1
AZM: 340.2

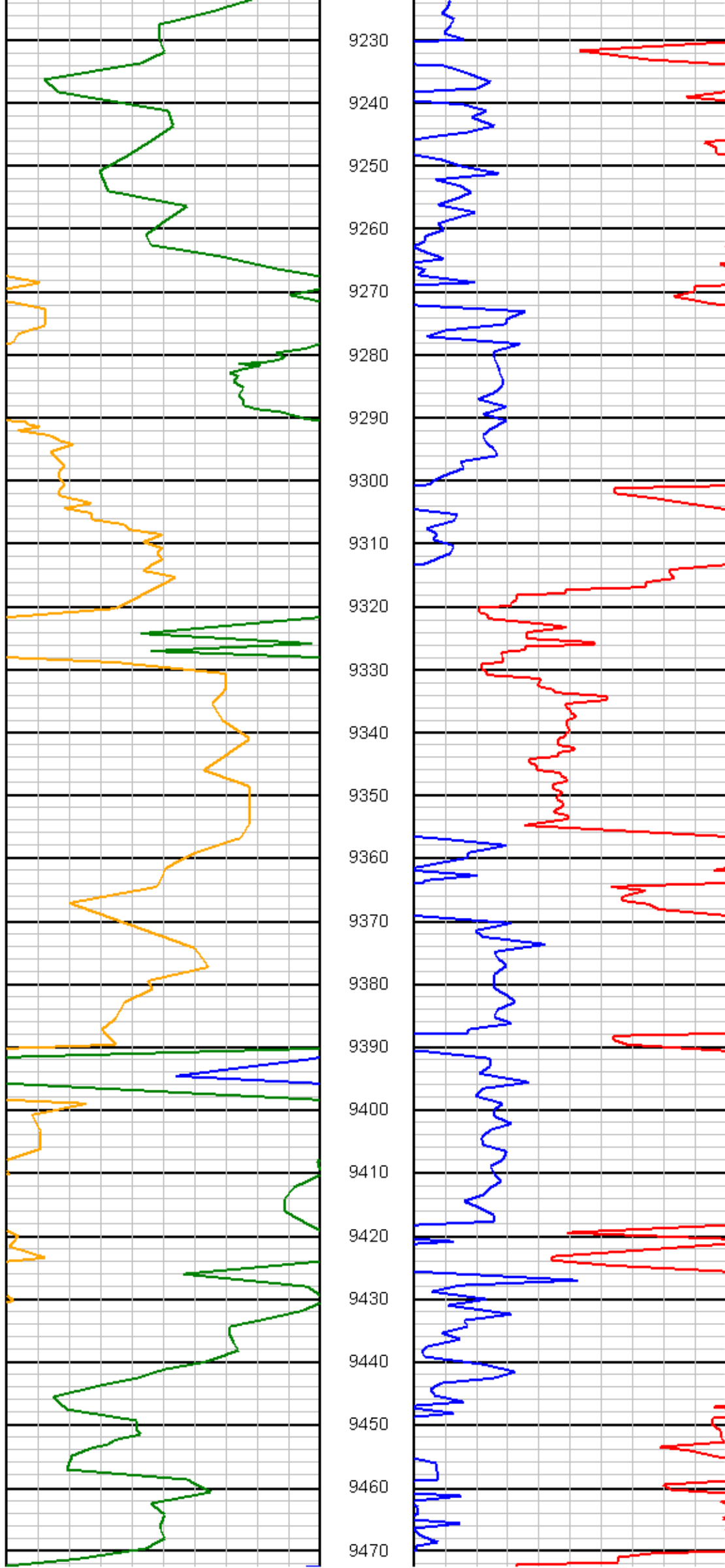
MD: 8904
INC: 91.4
AZM: 340.8



MD: 8998
INC: 92
AZM: 342

MD: 9092
INC: 92.2
AZM: 342

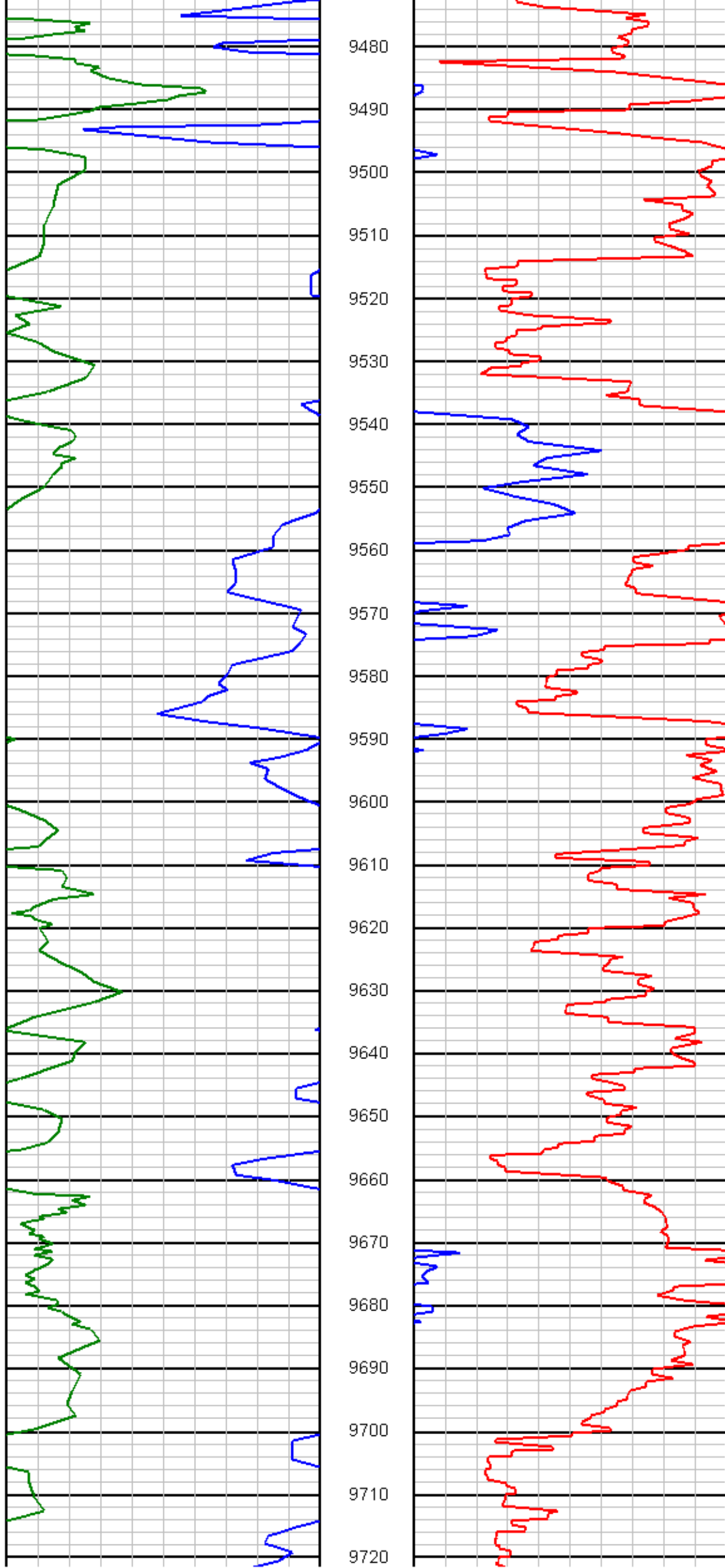
MD: 9186
INC: 90.5
AZM: 341.3



MD: 9281
INC: 89.5
AZM: 341.3

MD: 9375
INC: 92
AZM: 341.2

MD: 9469
INC: 91.3



AZM: 340.1

9480

9490

9500

9510

9520

9530

9540

9550

9560

9570

9580

9590

9600

9610

9620

9630

9640

9650

9660

9670

9680

9690

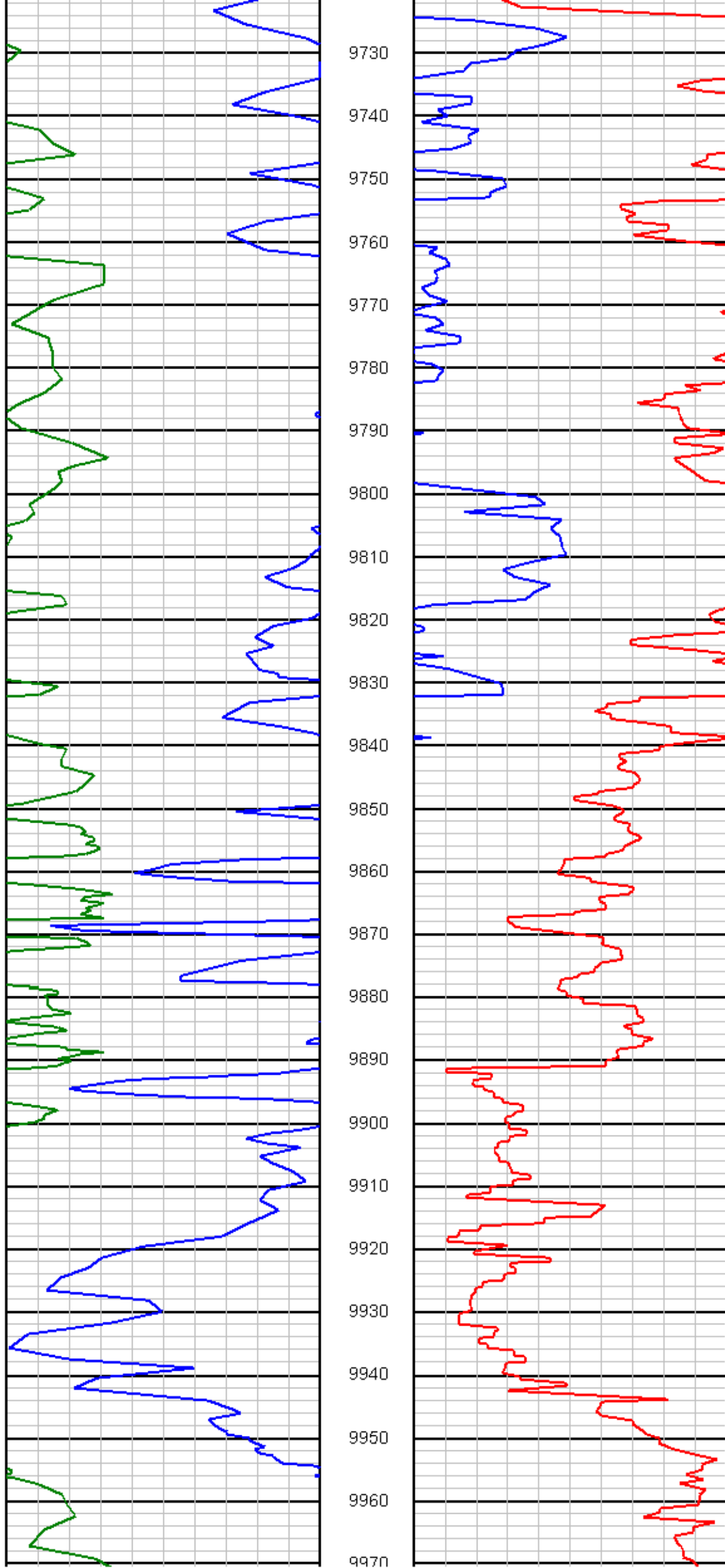
9700

9710

9720

MD: 9563
INC: 92.1
AZM: 340.8

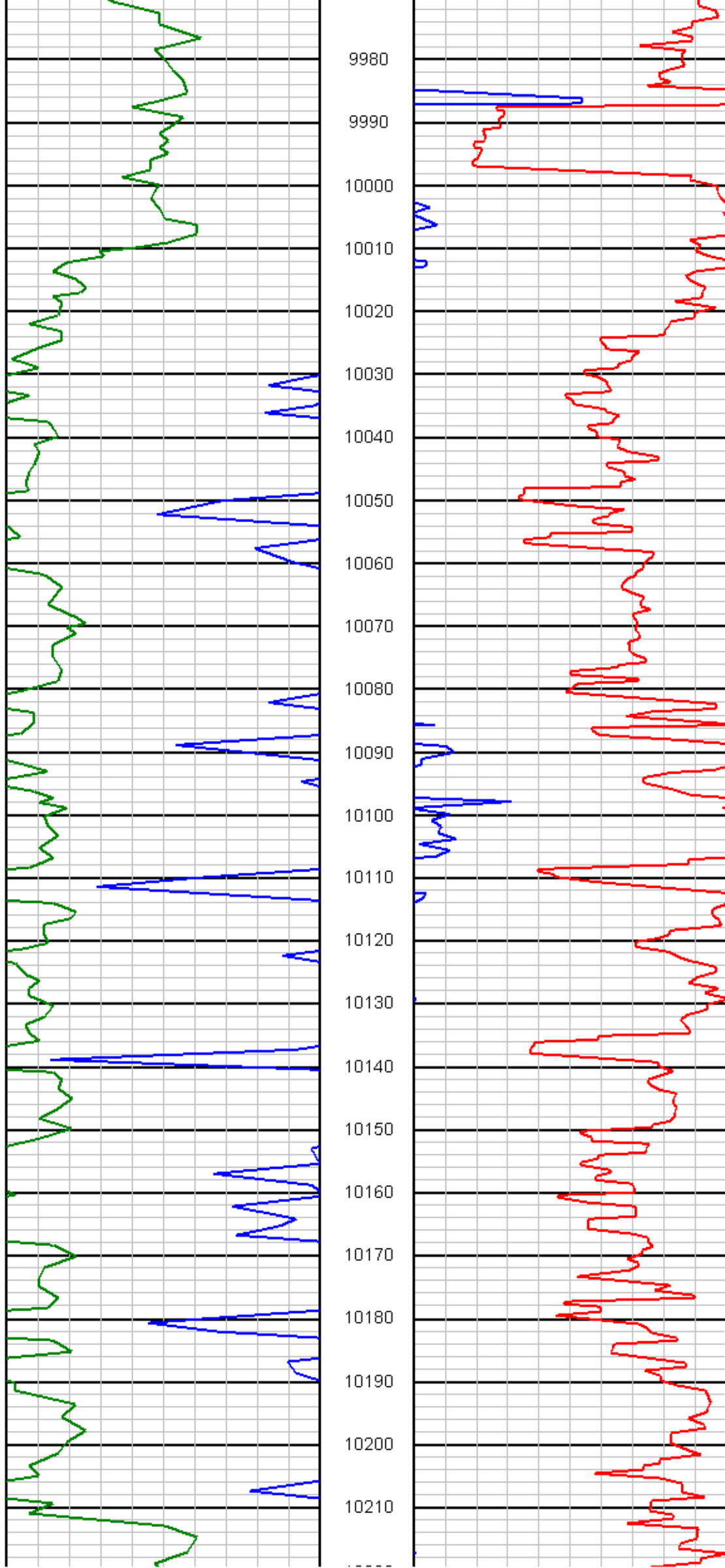
MD: 9658
INC: 90.5
AZM: 339.9



MD: 9752
INC: 91.3
AZM: 340.3

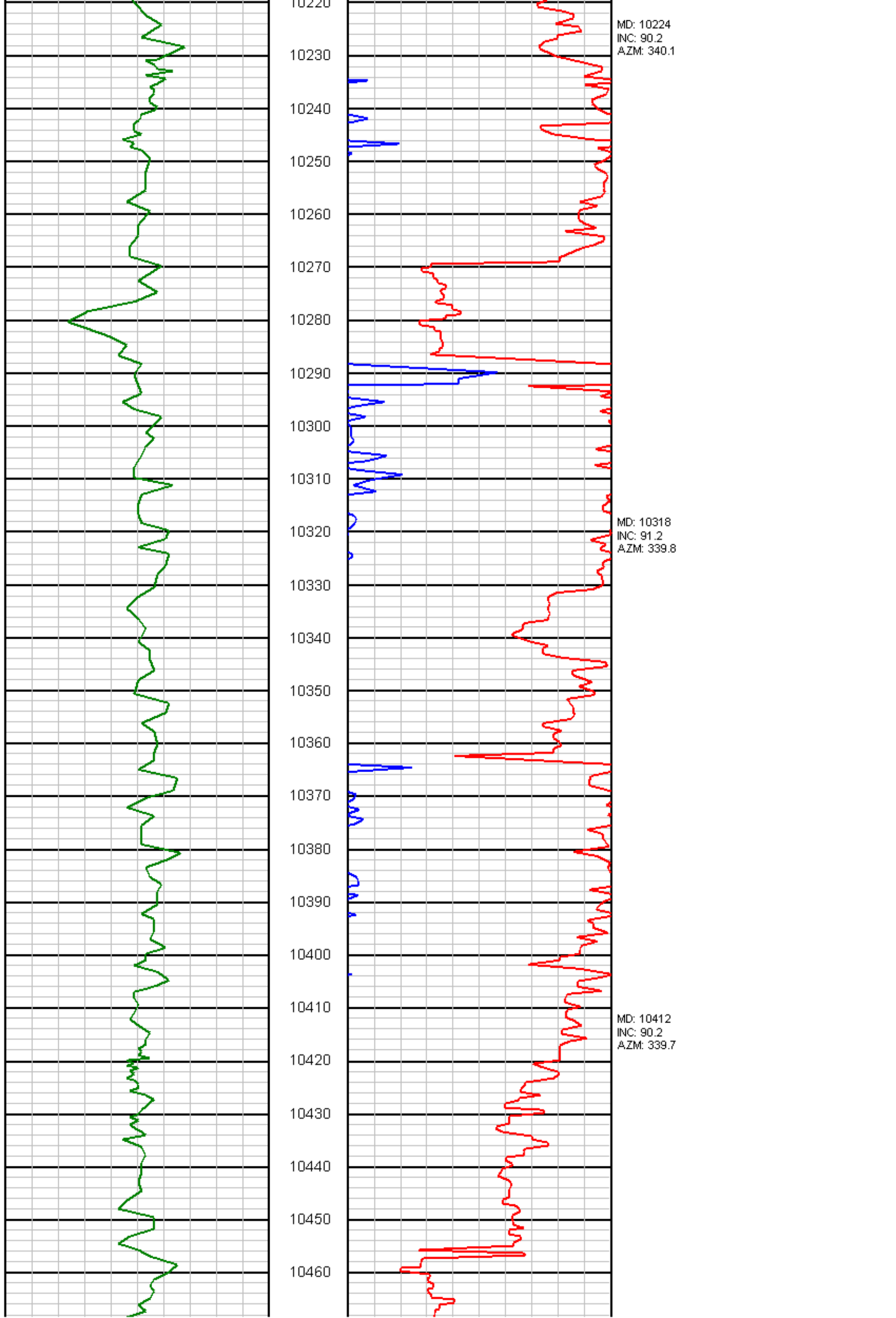
MD: 9847
INC: 91.1
AZM: 341.1

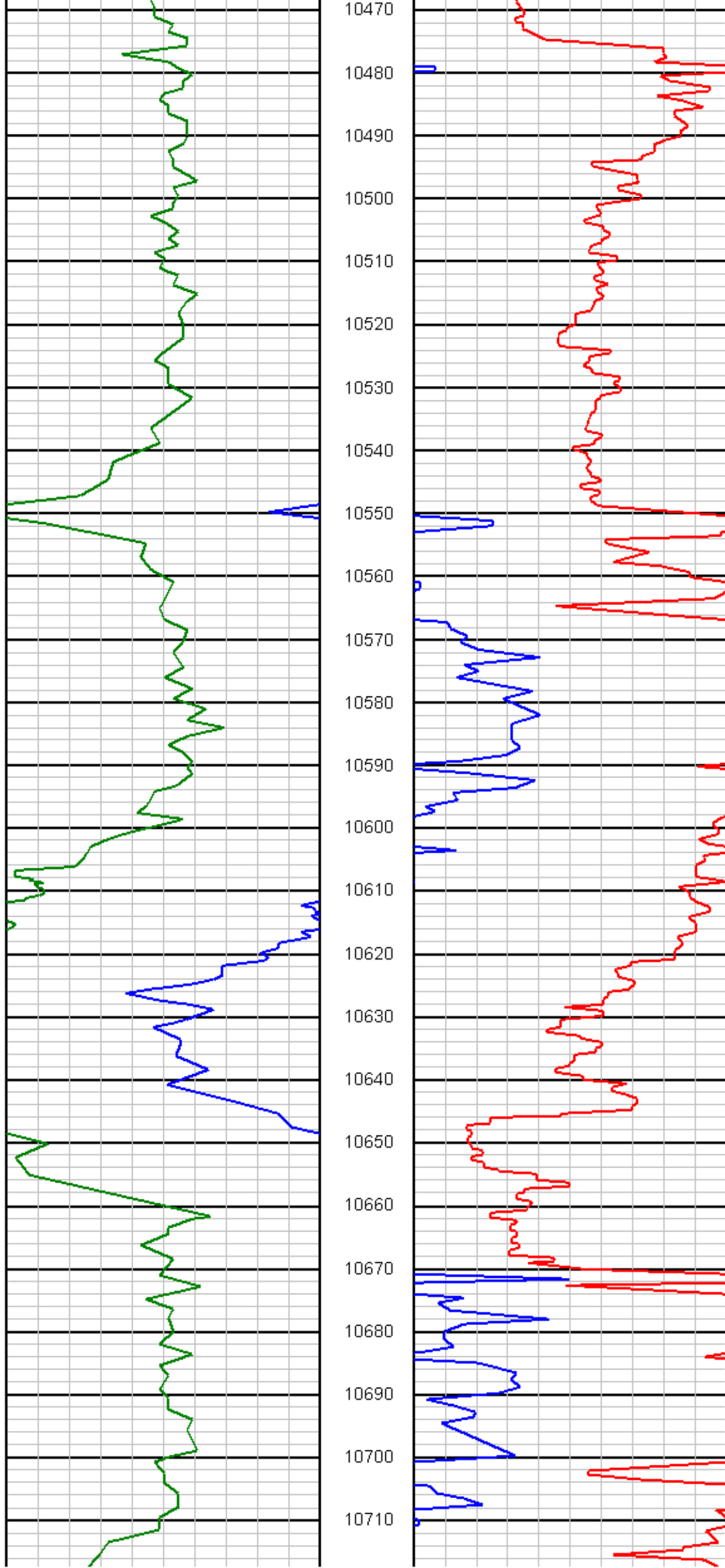
MD: 9941
INC: 93.5
AZM: 341.3



MD: 10035
INC: 92
AZM: 340.7

MD: 10129
INC: 91.2
AZM: 340.8

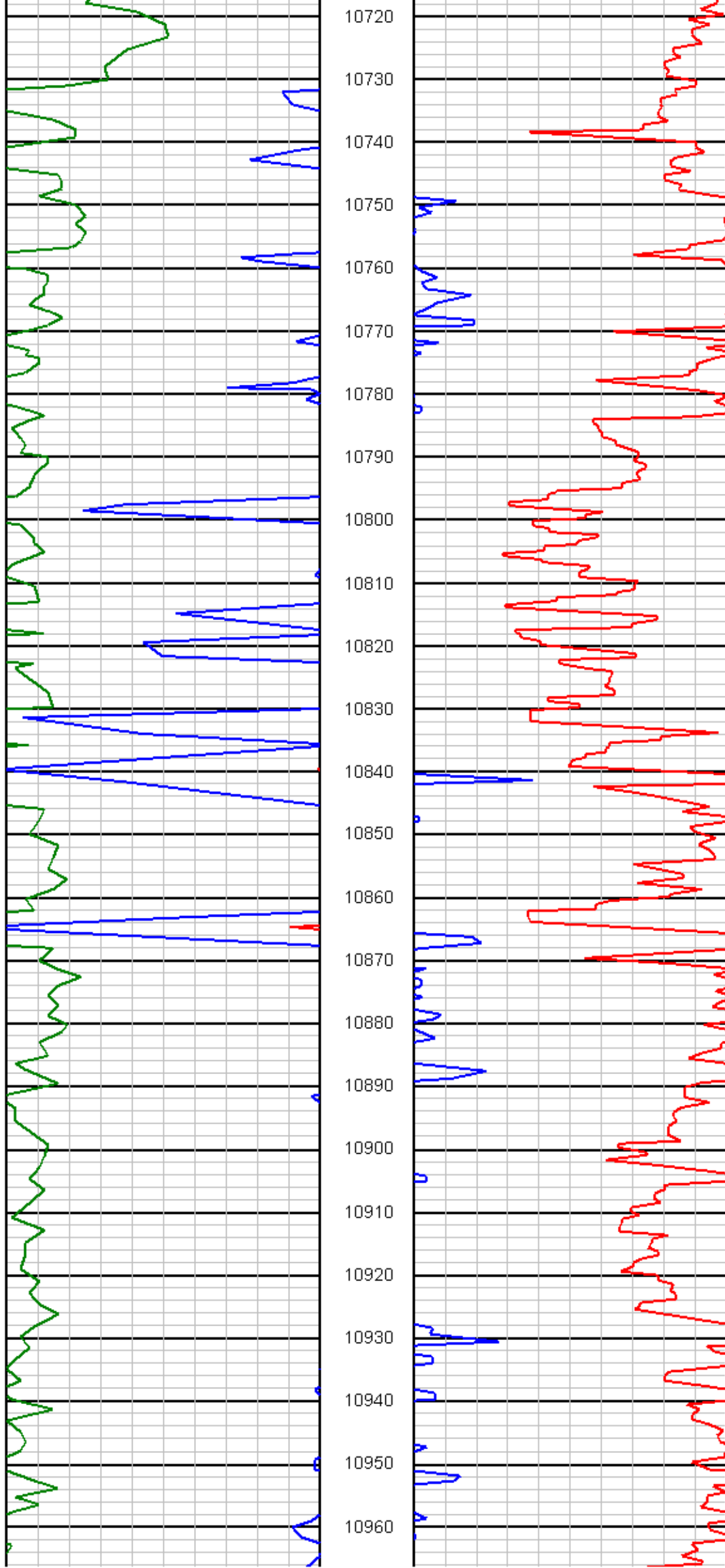




MD: 10506
INC: 91.1
AZM: 339

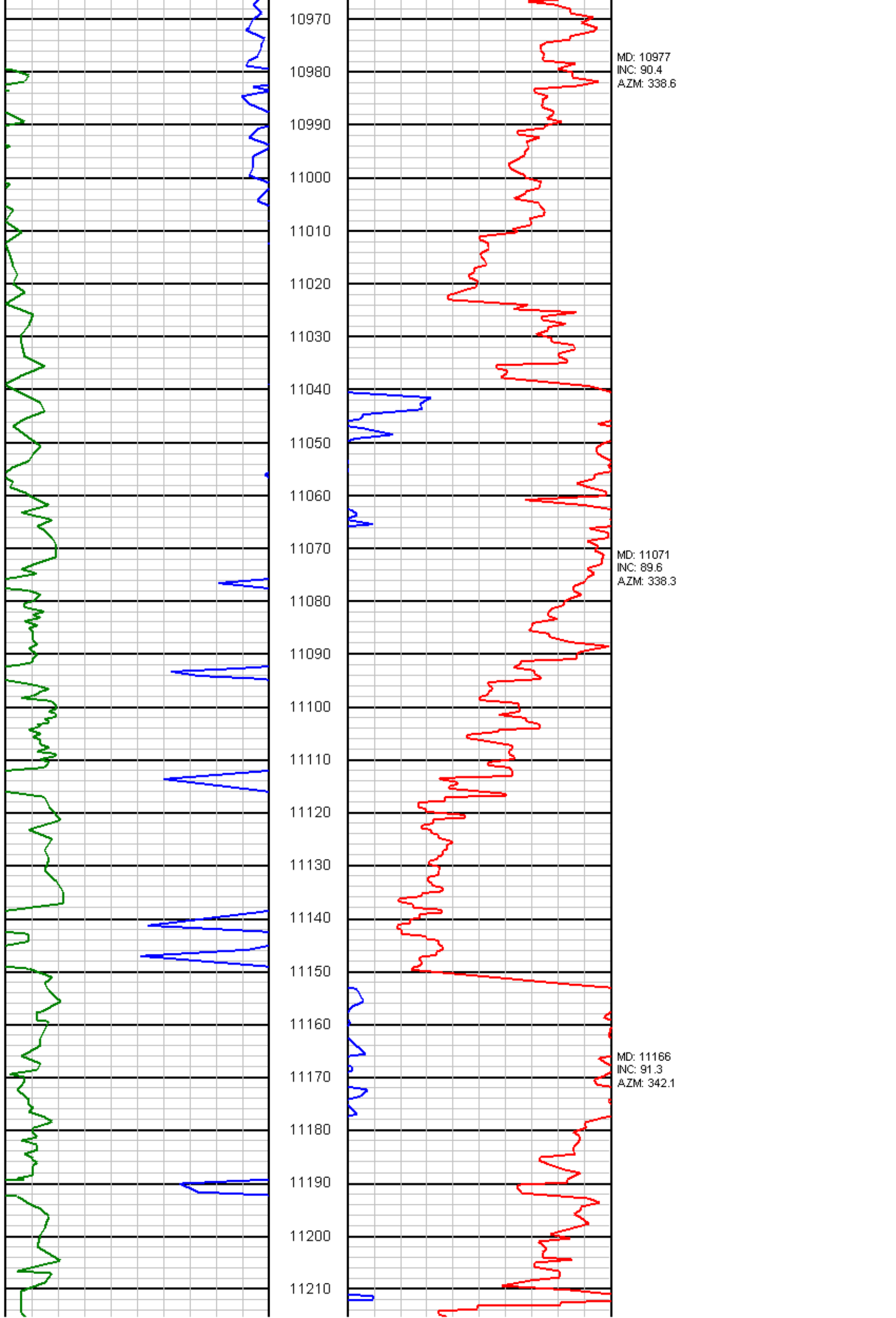
MD: 10600
INC: 89.8
AZM: 337.6

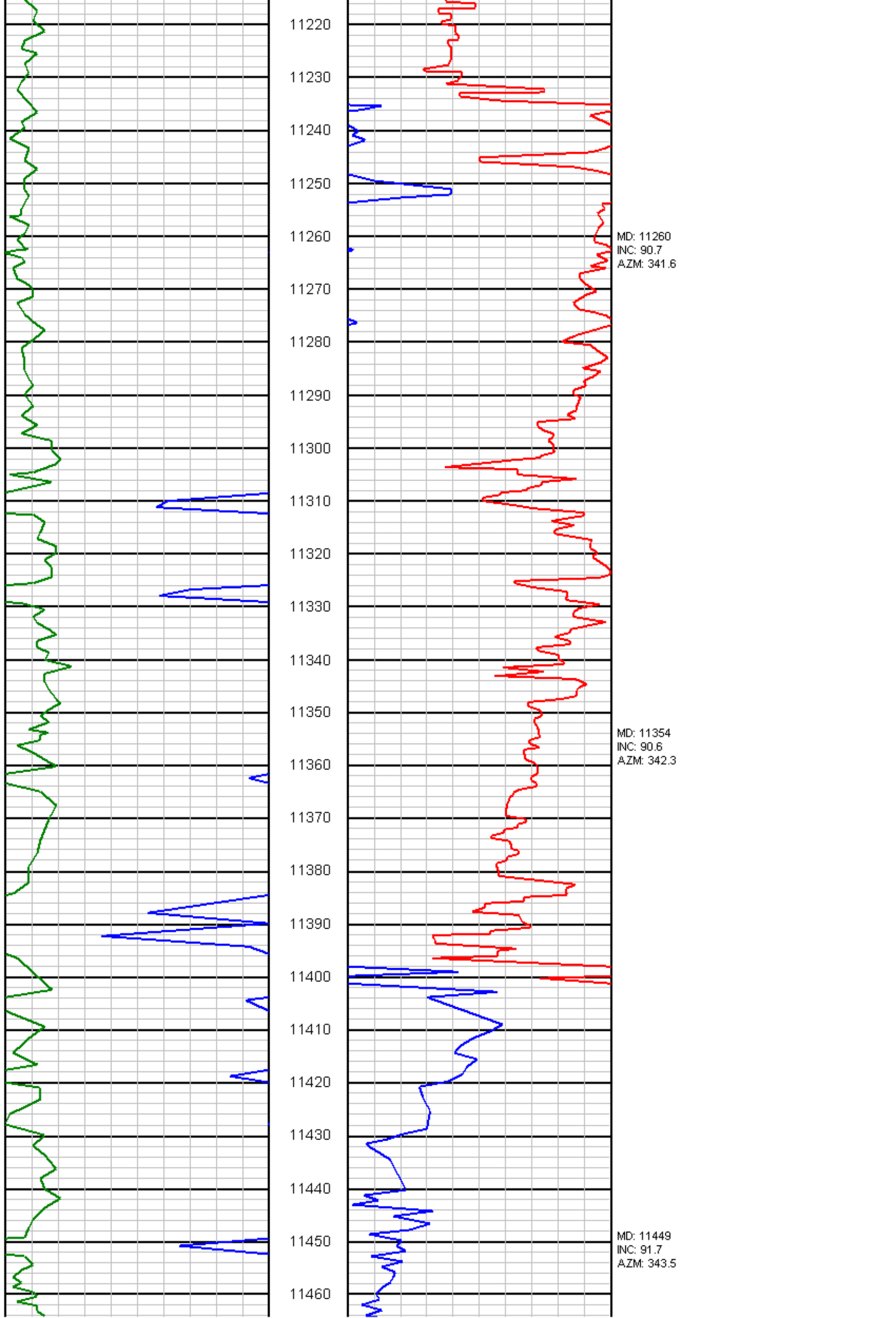
MD: 10694
INC: 92.3
AZM: 338.8

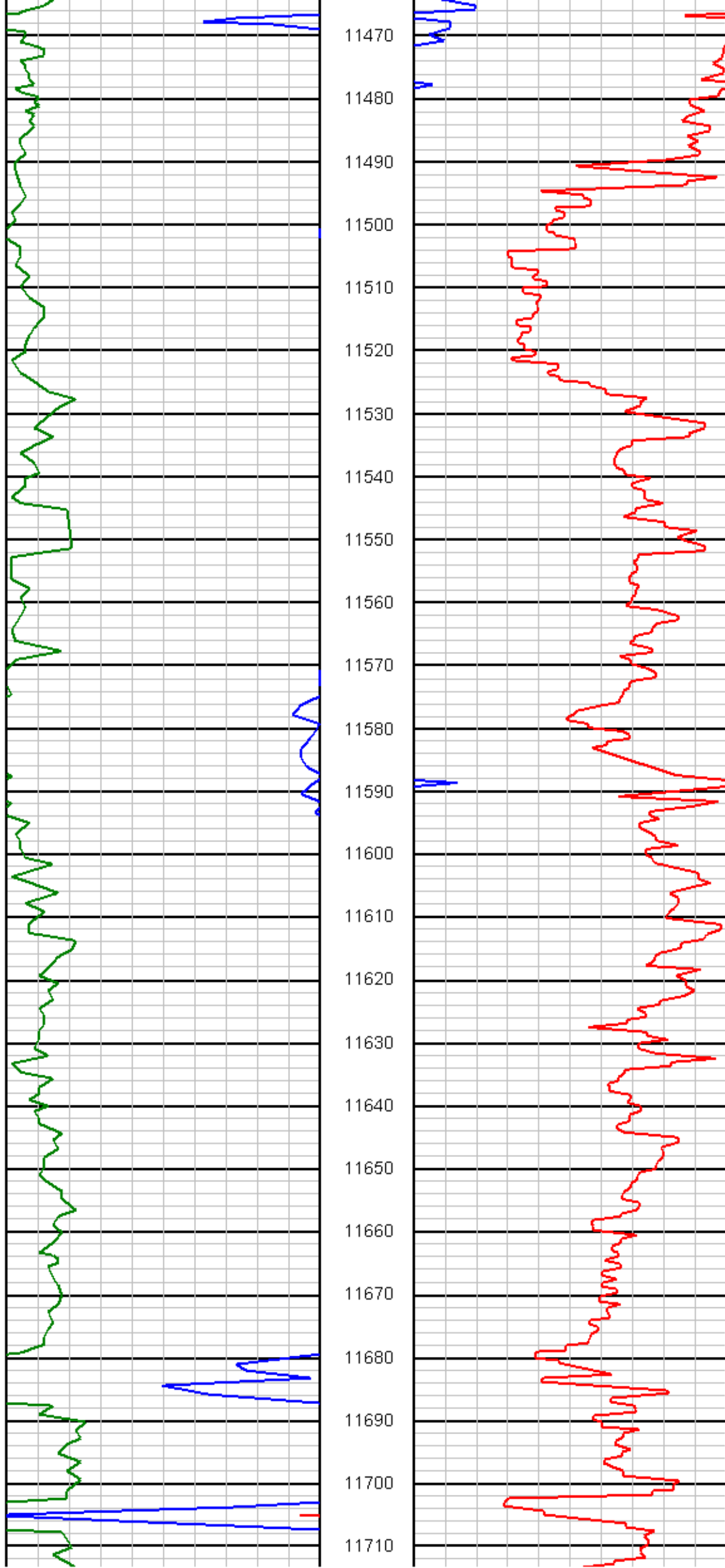


MD: 10788
INC: 91.1
AZM: 338.8

MD: 10883
INC: 91.6
AZM: 338.9

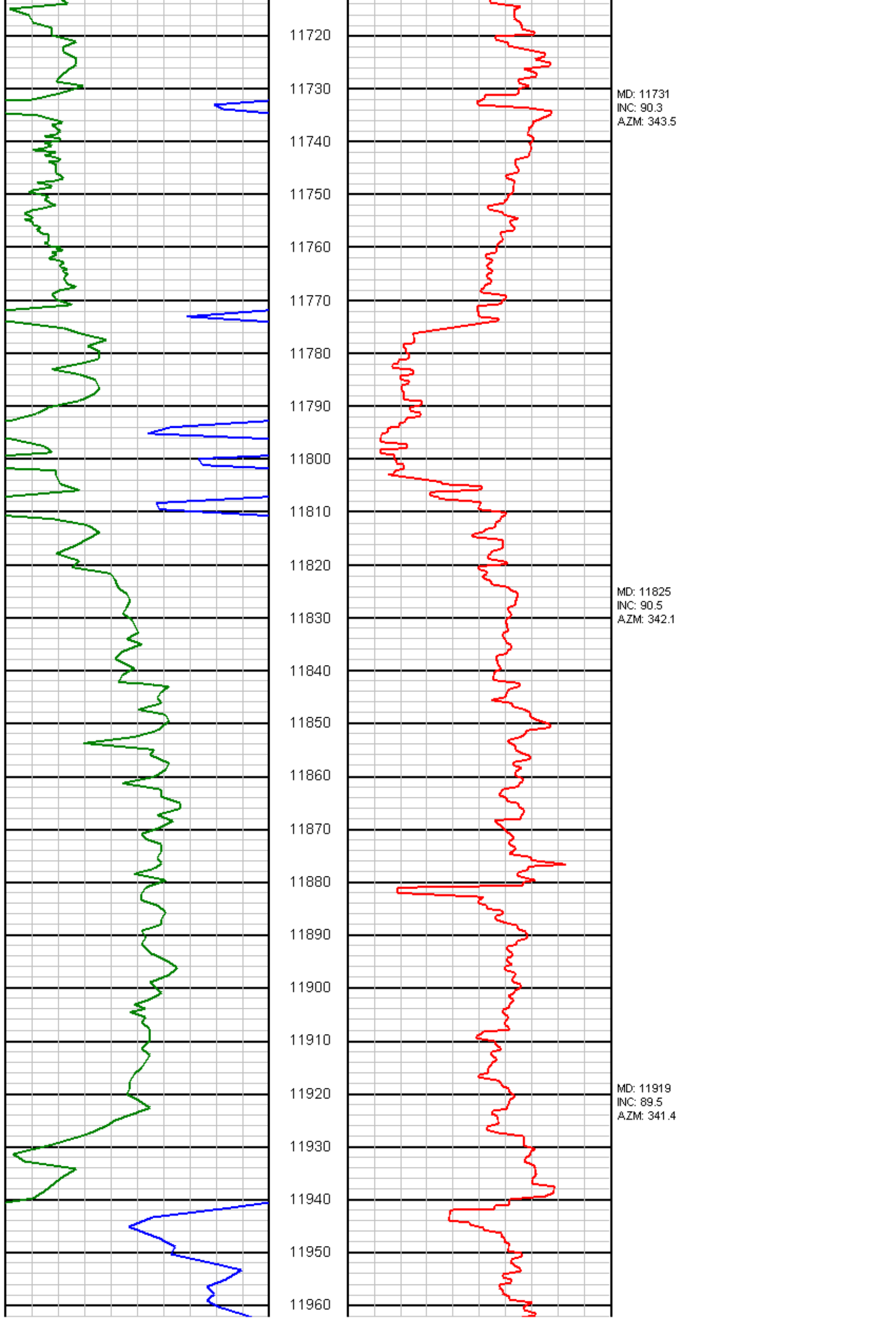


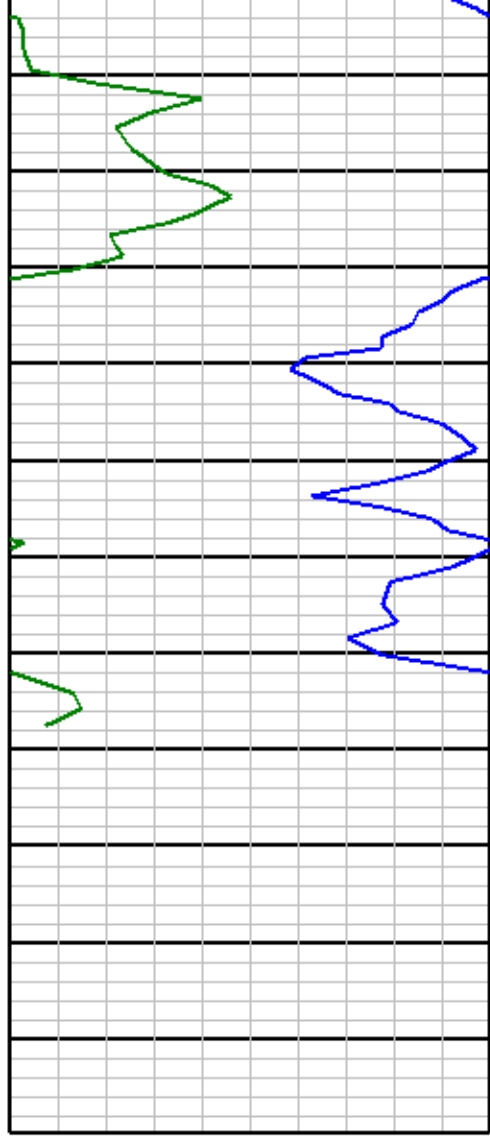




MD: 11543
INC: 90.9
AZM: 342.9

MD: 11637
INC: 90
AZM: 342.6





11970
11980
11990
12000
12010
12020
12030
12040
12050
12060
12070
12080



MD: 12014
INC: 91.3
AZM: 342.1

MD: 12033
INC: 91.2
AZM: 342.6

MD: 12077
INC: 91.2
AZM: 342.6