

CONDENSATED DENSITY LOG

FILING NO.

PERMIT NO. 47-073-1571

490730157

COMPANY **ENERGEX OIL & GAS CORP.**
WELL **McCULLOUGH #1**
FIELD **JEFFERSON DISTRICT**
COUNTY **DESAUTS** STATE **WV.**LOCATION: **Cow Creek**ROAD: **SCHULTZ**

FIELD PRINT

SEC. _____ TWP. _____ RGE. _____

OTHER SERVICES:
PRL-1
TEMP.Permanent Datum: **GROUND LEVEL** Elev. **826'**
Log Measured From **TOP OF 2 3/8" CAS** 3 Ft Above Perm. Datum
Drilling Measured From **TOP OF 2 3/8" CAS**Elev. **829'**
D.F. **829'**
G.L. **826'**

Date	8 DECEMBER 22
Run No.	ONE
Type Log	GR CO CAS
Depth—Driller	2128'
Depth—Logger	2150'
Bottom logged interval	2146'
Top logged interval	980'
Type fluid in hole	H₂O
Salinity, PPM Cl	—
Density	—
Level	—
Max rec temp, deg F	72.70
Operating rig time	2:55
Recorded by	E. CRAIG
Witnessed by	—

Run	Bore Hole Record		Casing Record				
Ho.	Bit	From	To	Size	Wgt	From	To
ONE	6 1/4"	980'	2150'	2 3/8"	WV	SURFACE	

Equipment Data

No.	Tool No.	Source No.	Panel No.	Logging Unit	Location

Calibration Data

Run No.	Gamma Ray			CDT					
	API Scale	Background CPS	Std. CPS	Ds CPS AT	2.0	3.0	Dl CPS AT	2.0	3.0

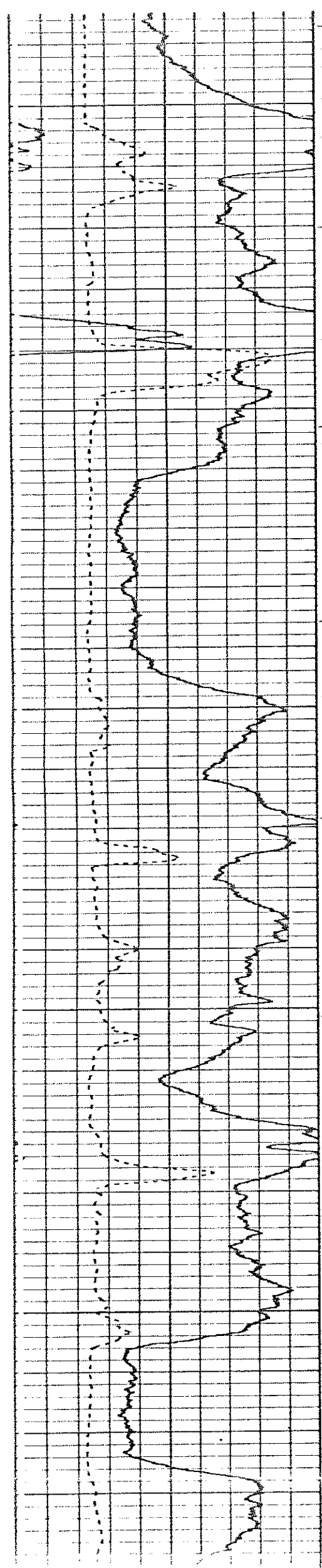
Logging Data

Run No.	Depths		Speed Ft Min	GR TC
	From	To		

EG-2-68

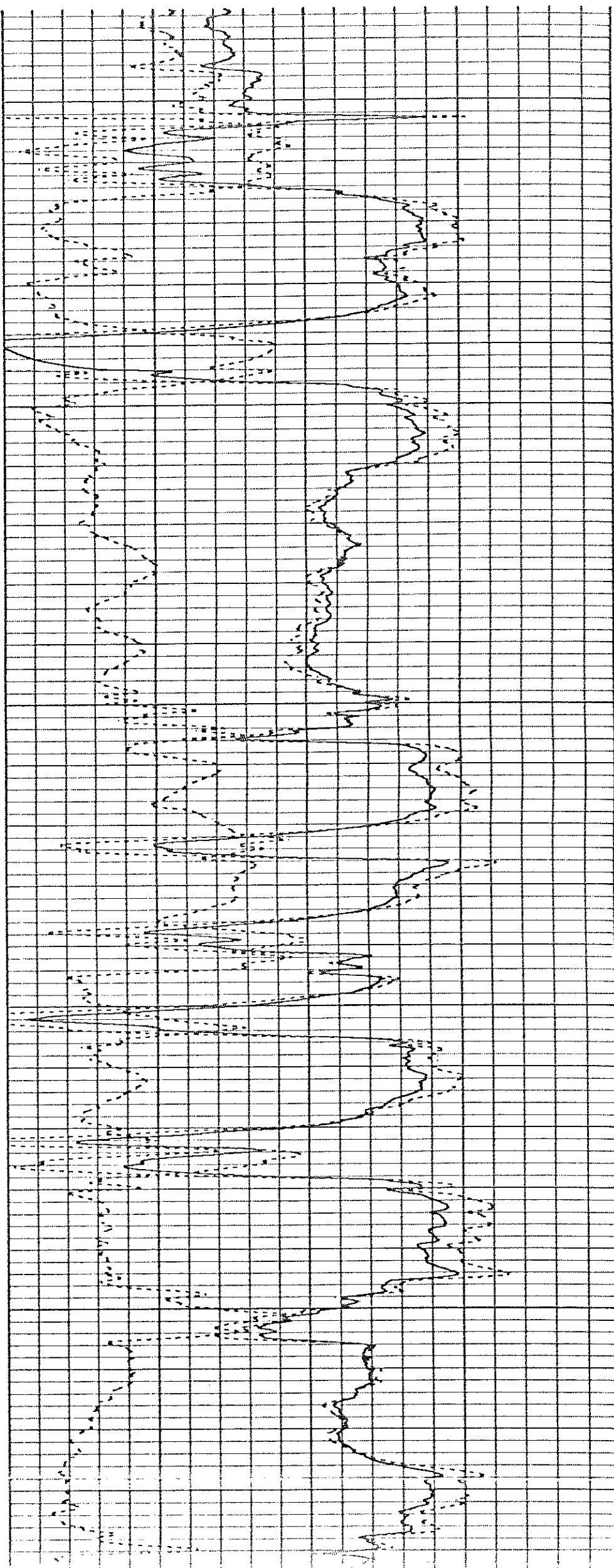
J

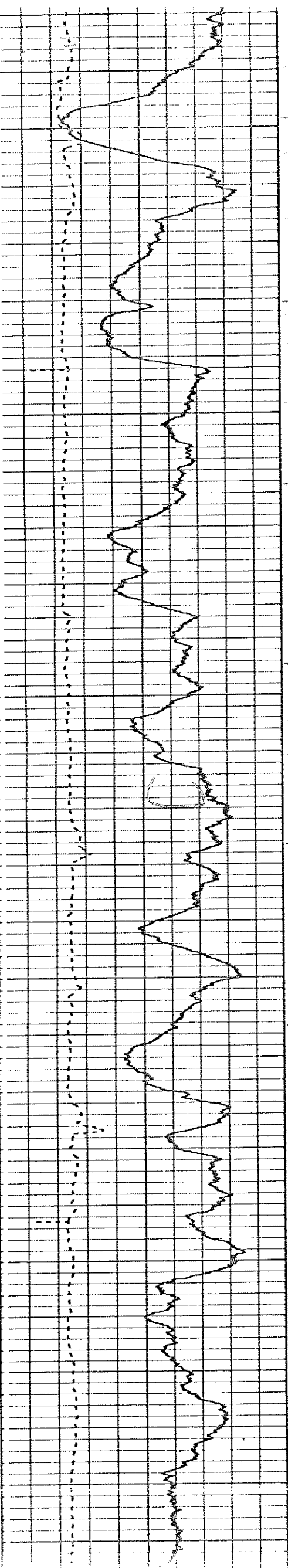
GAMMA RAY API UNITS	DEPTHS	BULK DENSITY GRAMS/CC		
0		2.0	2.5	3.0
CALIPER				
HOLE SIZE INCHES				



1000

1100

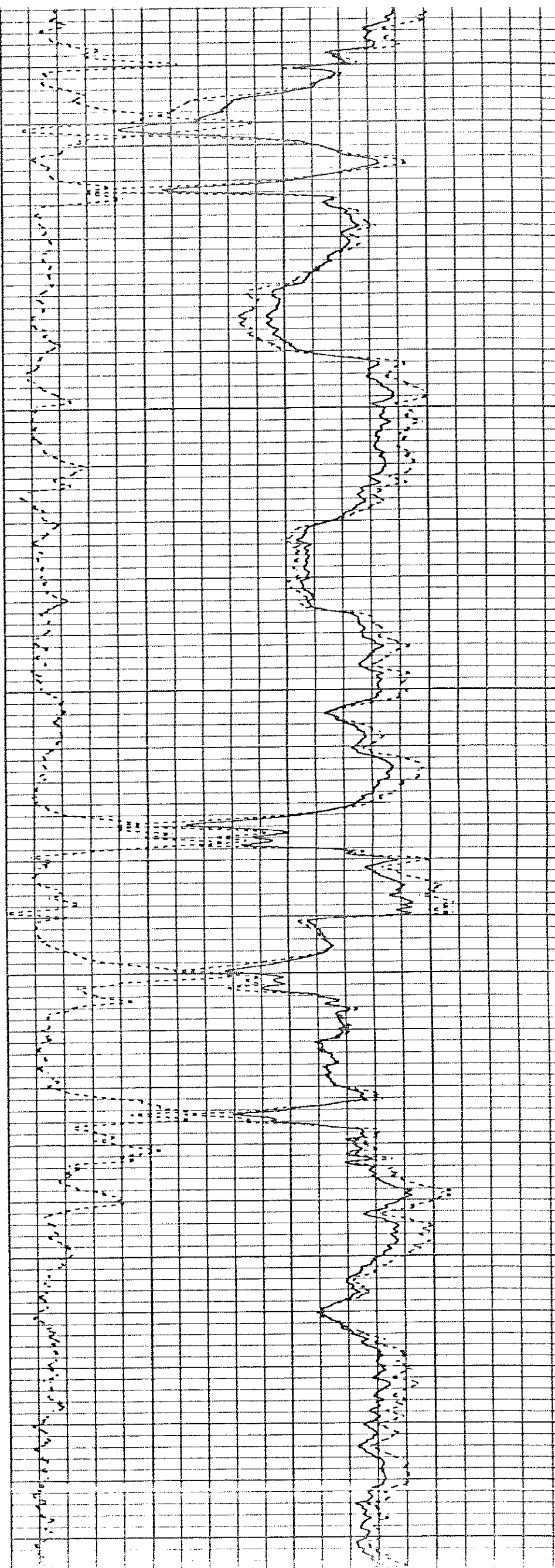


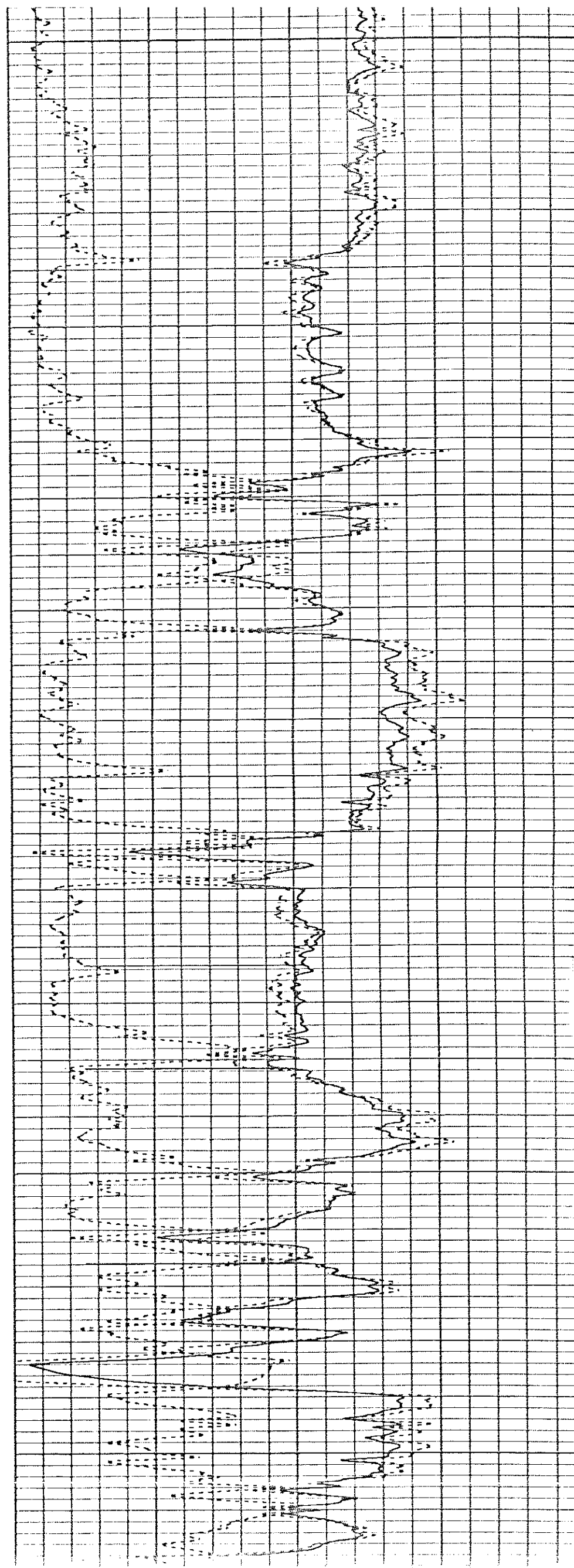
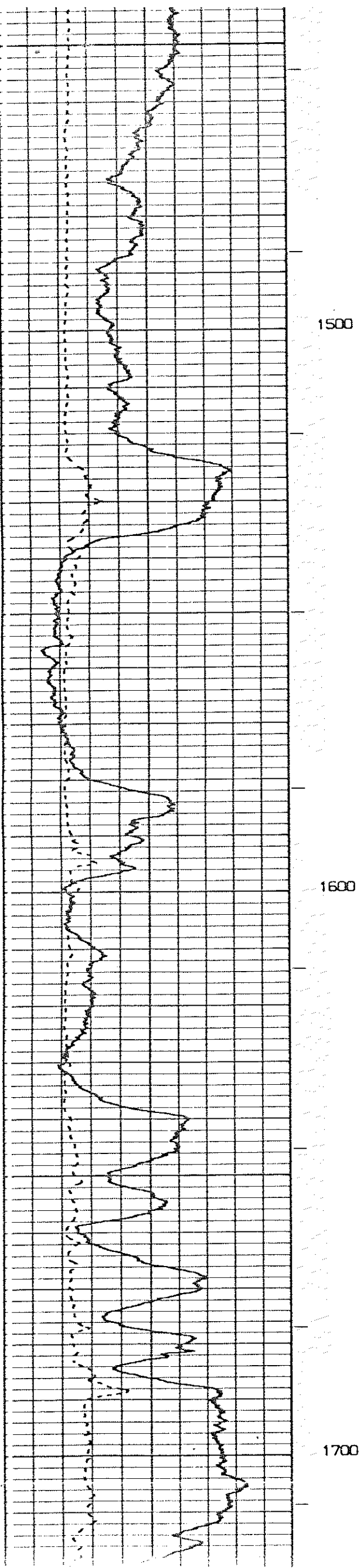


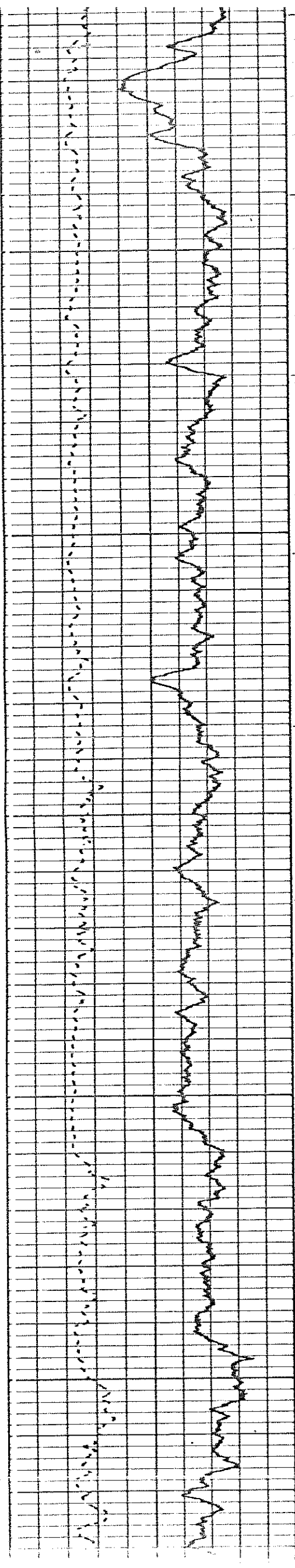
1200

1300

1400

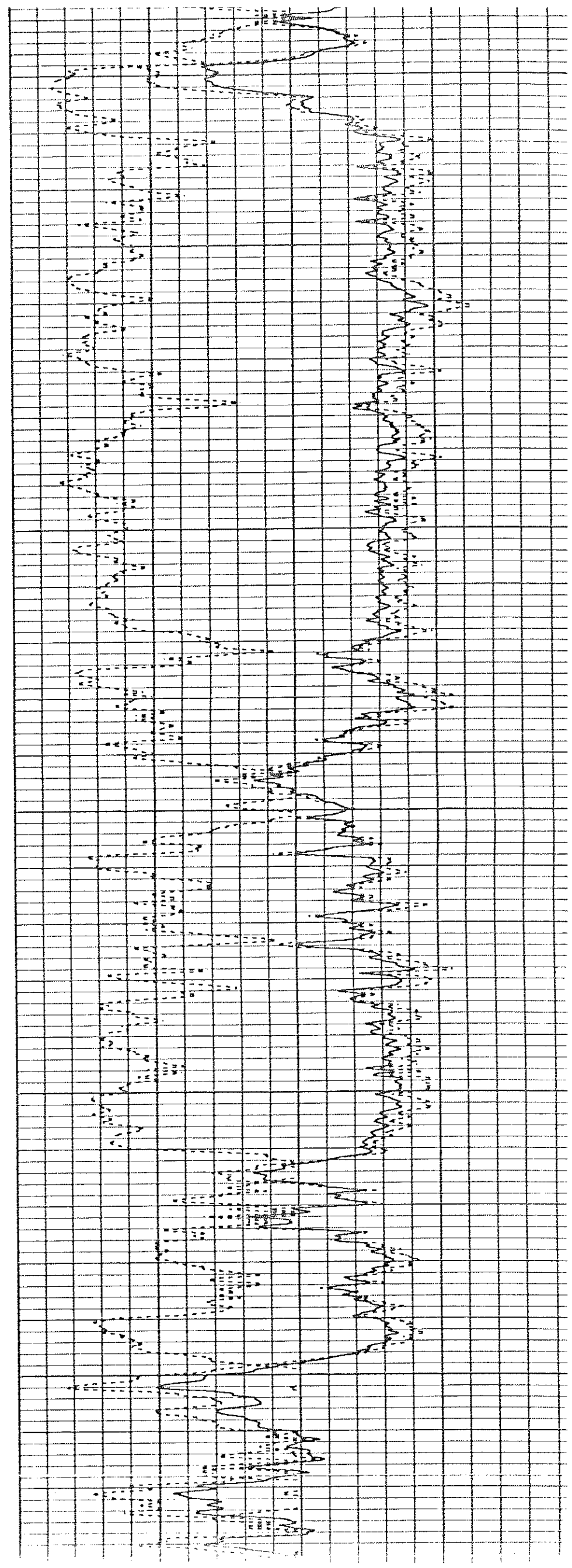


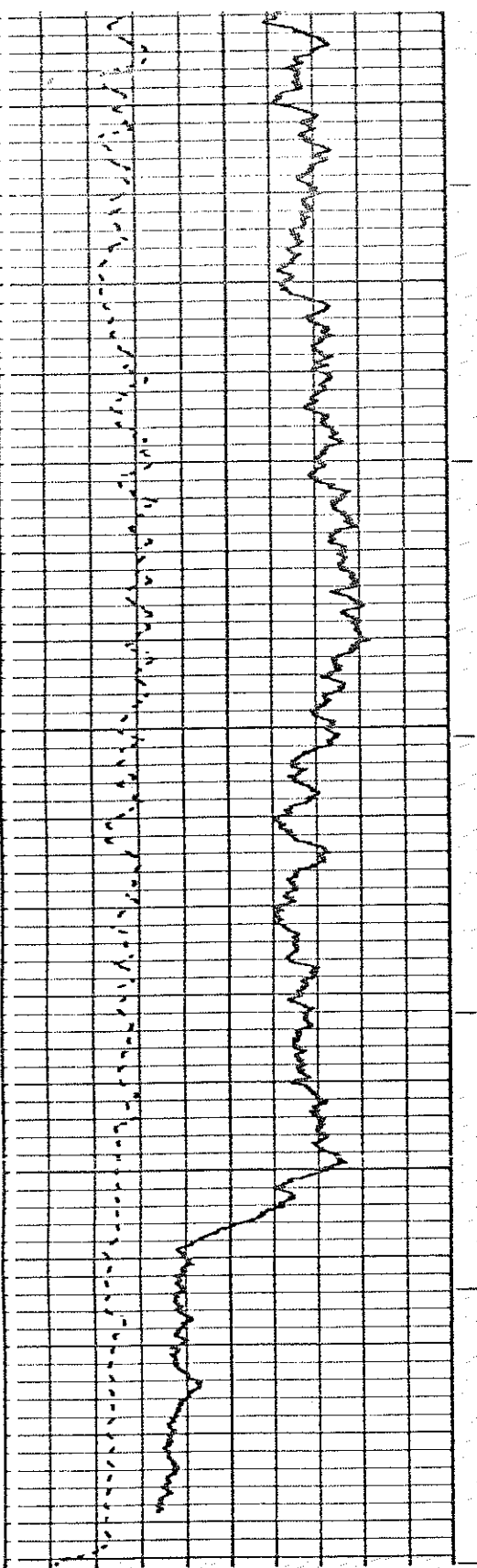




1800

1900





2000

2100

