



# Crim 2248 3H TVD

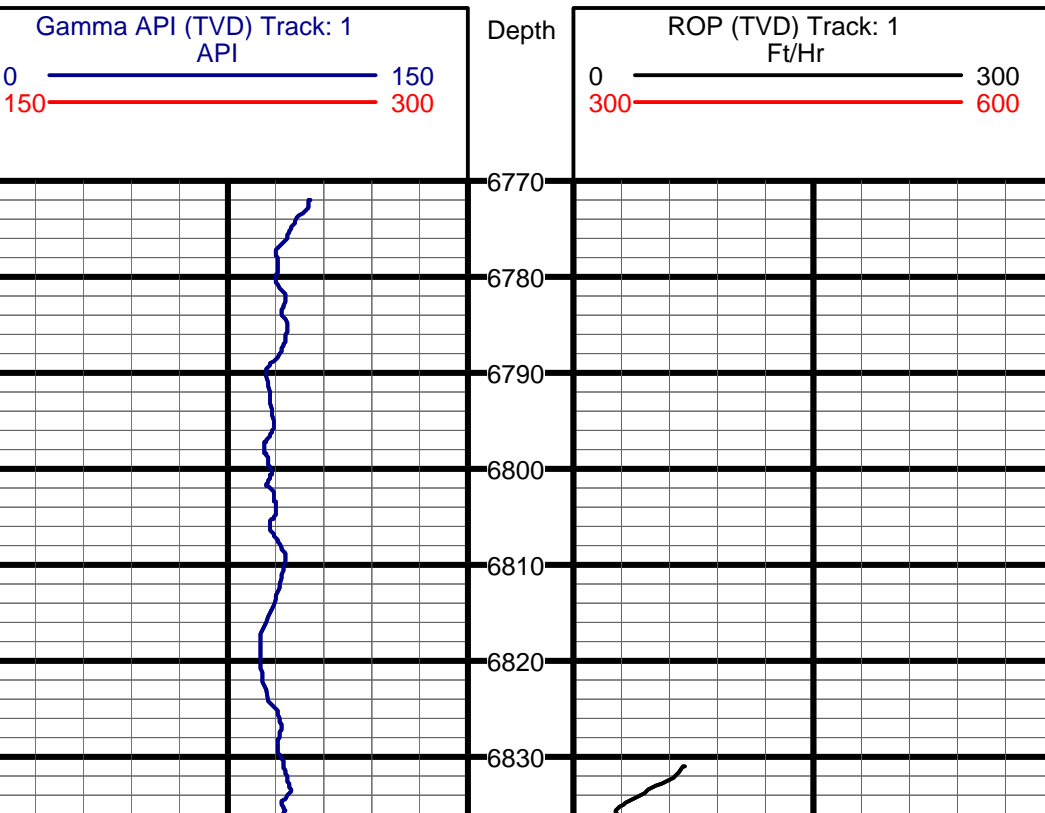
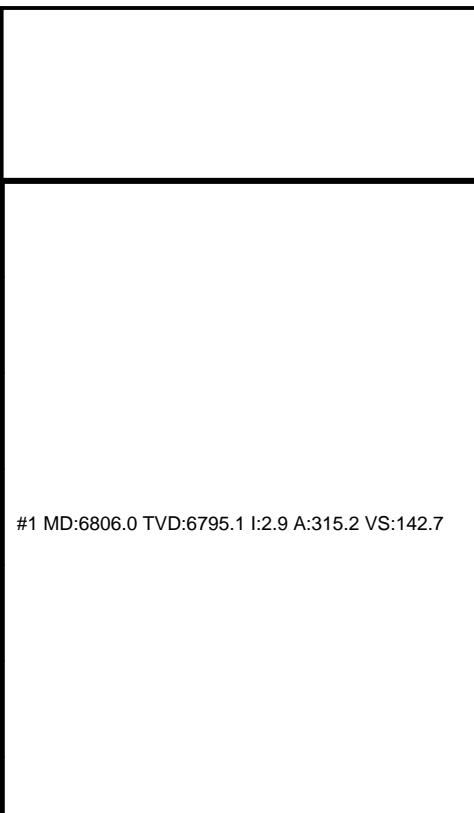
(Scale: 5" : 100')

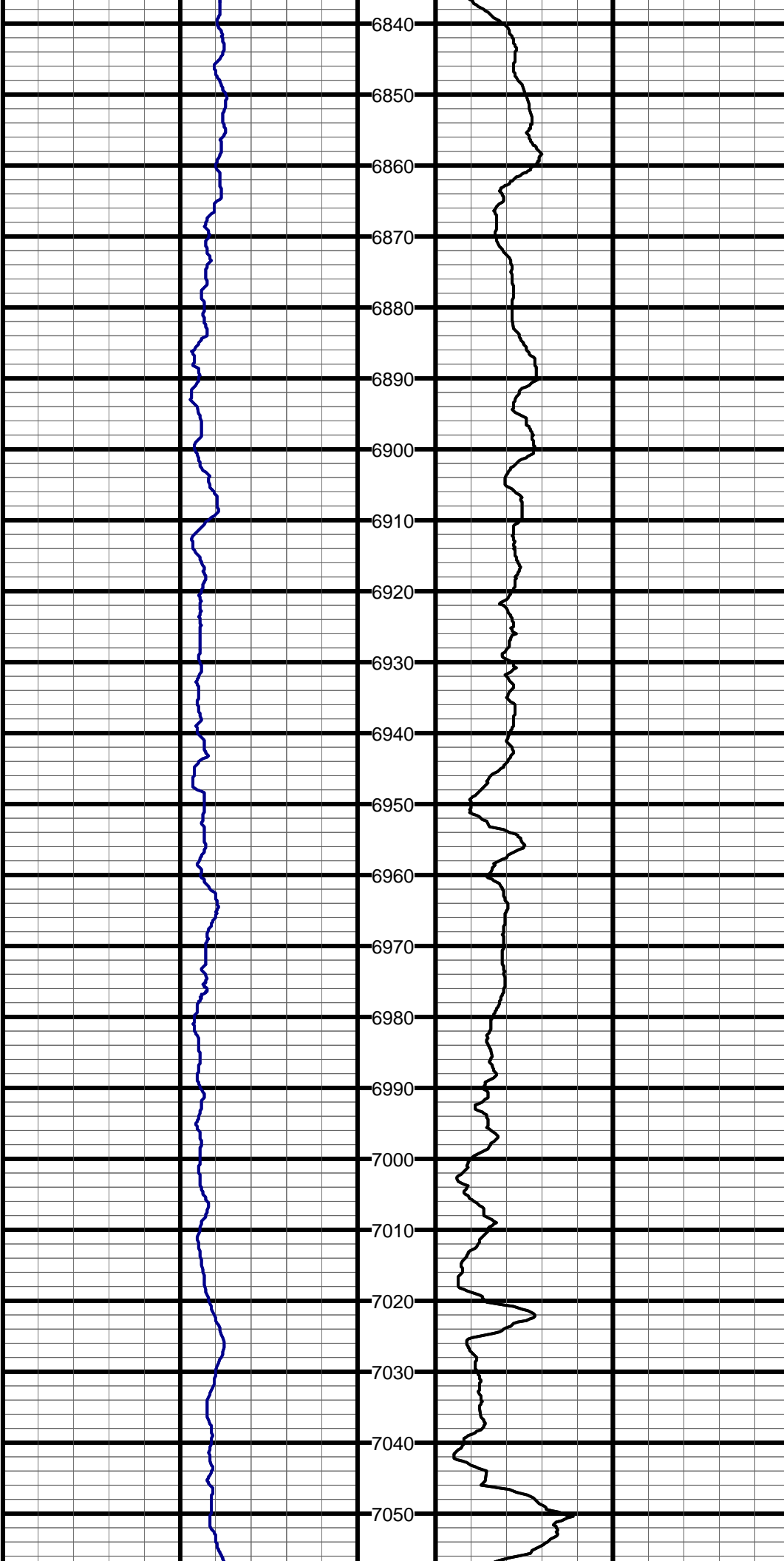
Company: XTO Energy Inc. State: WV  
 Well: Crim 2248 3H County: Marion  
 Field: Marcellus Country: USA  
 Well ID: 47-049-02115  
 Job Number: DDP4-100120  
 Location: Four States Elev KB: 985'  
 Operator 1: B. Holdridge Elev DF: 985'  
 Operator 2: J. Blakeny Elev GL: 965'

Comment 1: X: 354873.09  
 Comment 2: Y: 1773551.42  
 Comment 3:  
 Comment 4:  
 Comment 5:

Hole Data			Casing Record		
Size	From	To	Size	From	To
12 1/4"	0'	2910'	13 5/8"	0'	2910'
8 3/4"	2910'	11070'	9 5/8"	2910'	11070'

Tool Run Data		Run #1	Run #2	Run #3	Run #4	Run #5
Tool S/N	133	133	133	169		
Cal Factor	4.06	4.06	4.06	4.06		
Gamma Offset	59'	63'	59'	63'		
Start Depth	6840'	7049'	7154'	7336'		
Start Date	8/21/10	8/23/10	8/24/10	8/24/10		
Start Time	02:00	04:00	02:00	22:00		
End Depth	7049'	7154'	7336'	11070'		
End Date	8/23/10	8/24/10	8/24/10	7/29/10		
End Time	02:00	02:00	20:00	08:00		





#2 MD:6838.0 TVD:6827.1 I:3.0 A:313.0 VS:142.7

#3 MD:6870.0 TVD:6859.0 I:3.4 A:295.2 VS:143.0

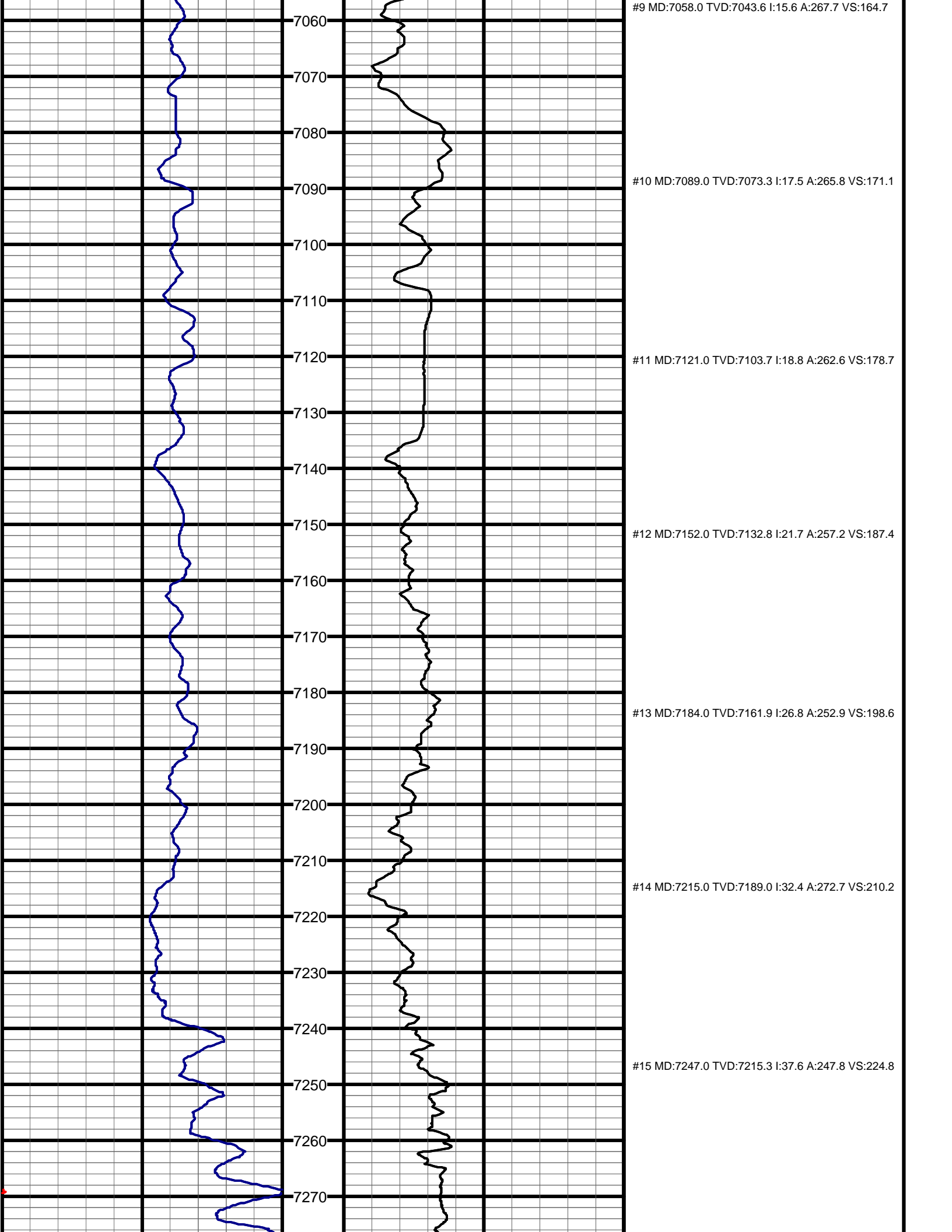
#4 MD:6902.0 TVD:6890.9 I:6.2 A:274.4 VS:144.4

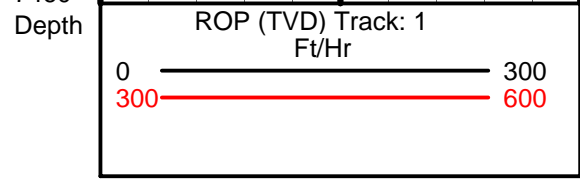
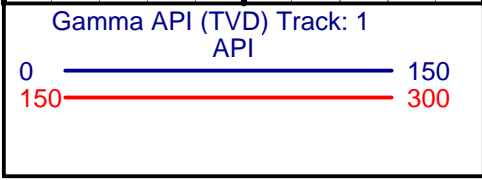
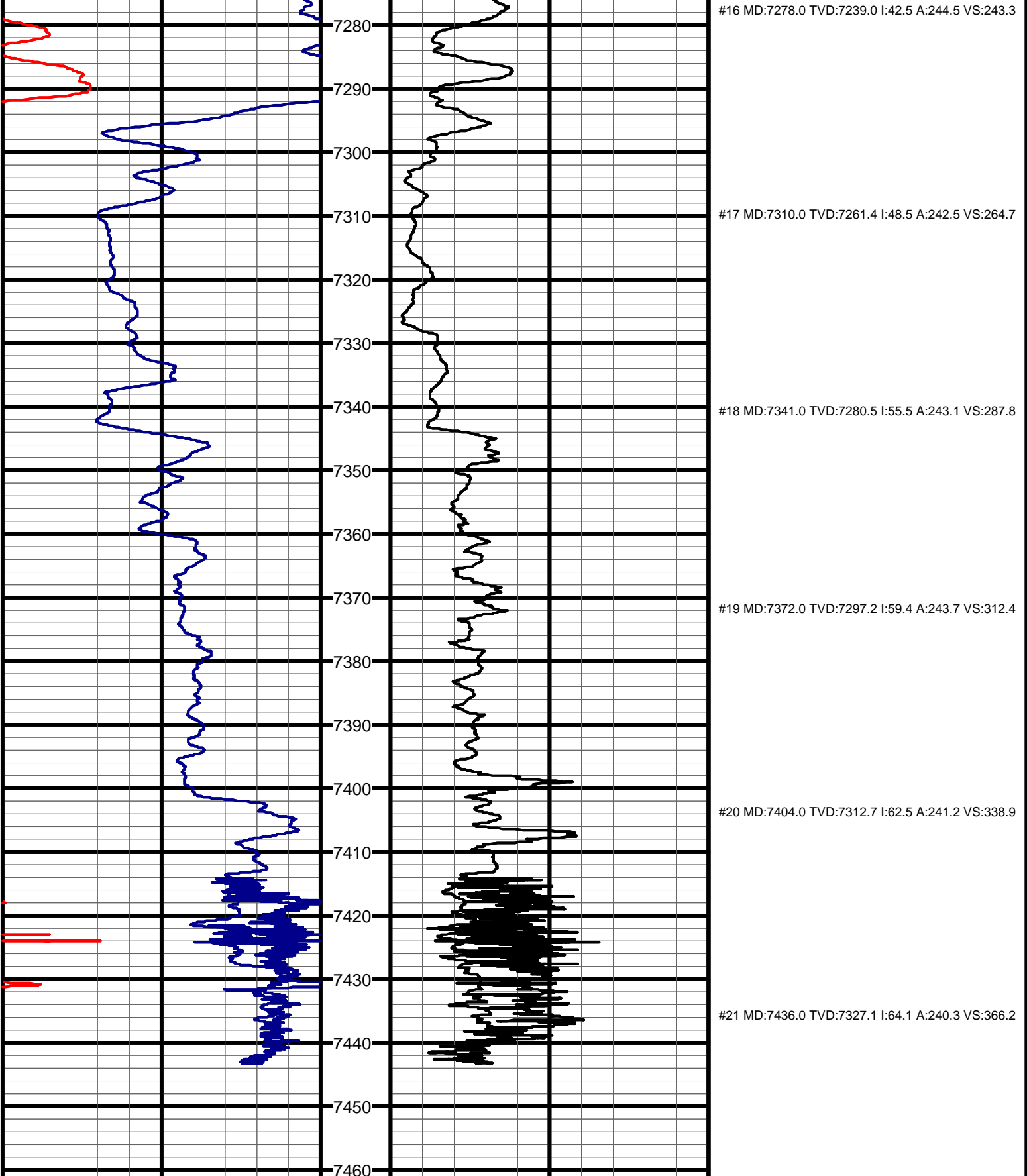
#5 MD:6933.0 TVD:6921.7 I:9.1 A:277.6 VS:146.9

#6 MD:6965.0 TVD:6953.2 I:10.9 A:278.3 VS:150.1

#7 MD:6996.0 TVD:6983.5 I:13.0 A:272.7 VS:154.1

#8 MD:7026.0 TVD:7012.6 I:14.2 A:270.4 VS:158.9





Depth

