

5150
RIG COPY

COMPANY	: WACO OIL & GAS, INC	OTHER SERVICES:	
WELL	: 5150	DIRECT	
FIELD	: LOVERIDGE MINE	BOND	
COUNTY	: MARION		
STATE	: WV		
LOCATION	: DENTS RUN		
SECTION	: N/A		
TOWNSHIP	: N/A		
RANGE	: N/A		
API NO.	: N/A		
UNIQUE WELL ID.	: N/A		
PERMANENT DATUM	: GL	ELEVATION KB	: N/A
LOG MEASURED FROM:	RF	ELEVATION DF	: N/A
DRL MEASURED FROM:	RF	ELEVATION GL	: N/A
DATE	: 03/11/13	RIG NUMBER	: 5
DEPTH DRILLER	: N/A	LOGGER TD	
BIT SIZE	: 6.25	ARRIVAL TIME	: 04:00 P
LOG TOP	: 1.80	DEPARTURE TIME:	
LOG BOTTOM	: 2811.70	CIRC STOPPED	: N/A
CASING OD	: N/A		
CASING BOTTOM	: N/A		
CASING TYPE	: SURFACE		
BOREHOLE FLUID	: MUD		
RM TEMPERATURE	: N/A		
MUD RES	: N/A		
MUD WEIGHT	: N/A		
WITNESSED BY	: SW		
RECORDED BY	: KEVIN WEST		
REMARKS 1	: LOG CURVES RUN, CALIPER, CCL & NATURAL GAMMA		
REMARKS 2	: LOG MEASURED FROM RIG FLOOR, APPROX. 4' FROM GROUND LEVEL.		

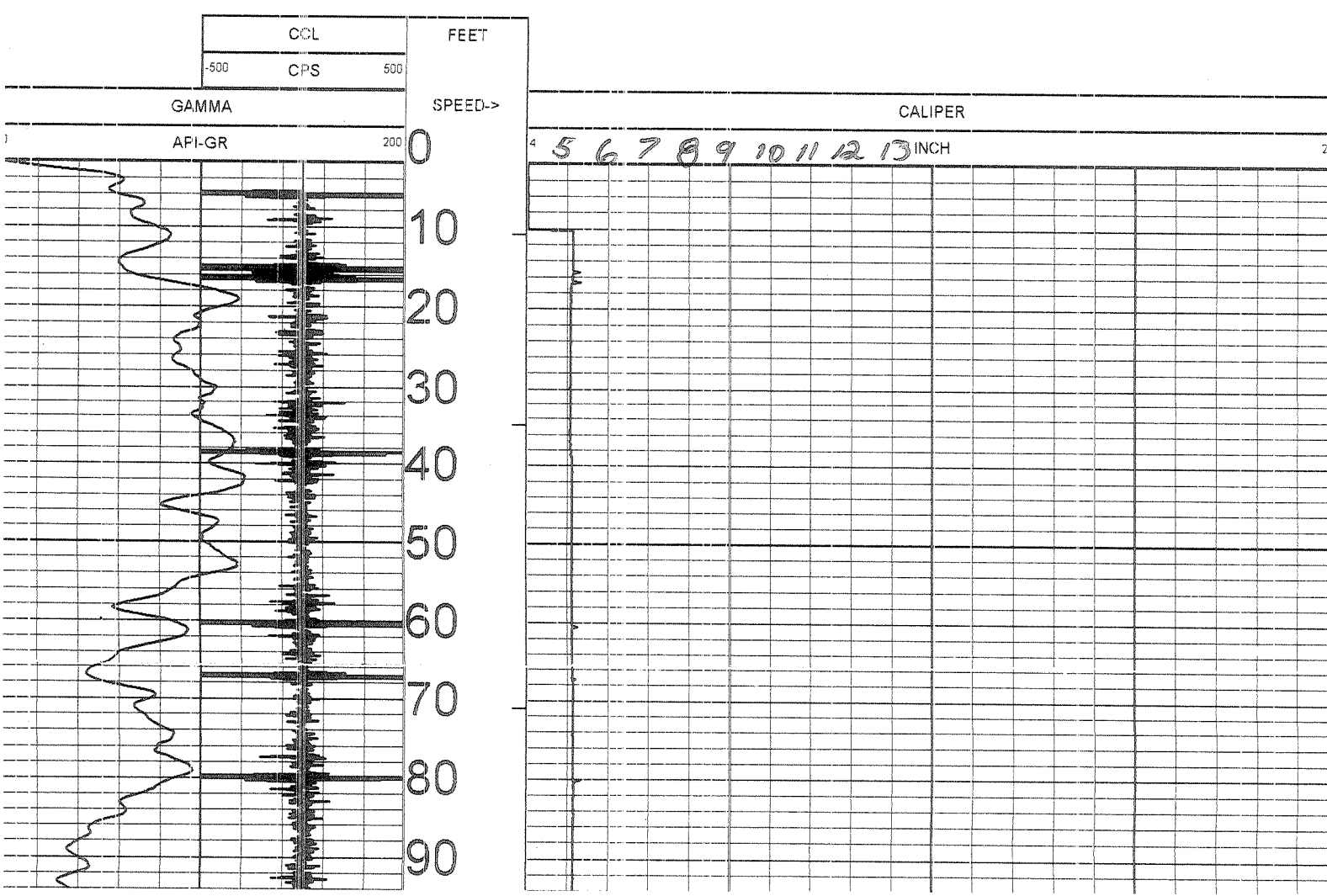
ALL SERVICES PROVIDED SUBJECT TO STANDARD TERMS AND CONDITIONS

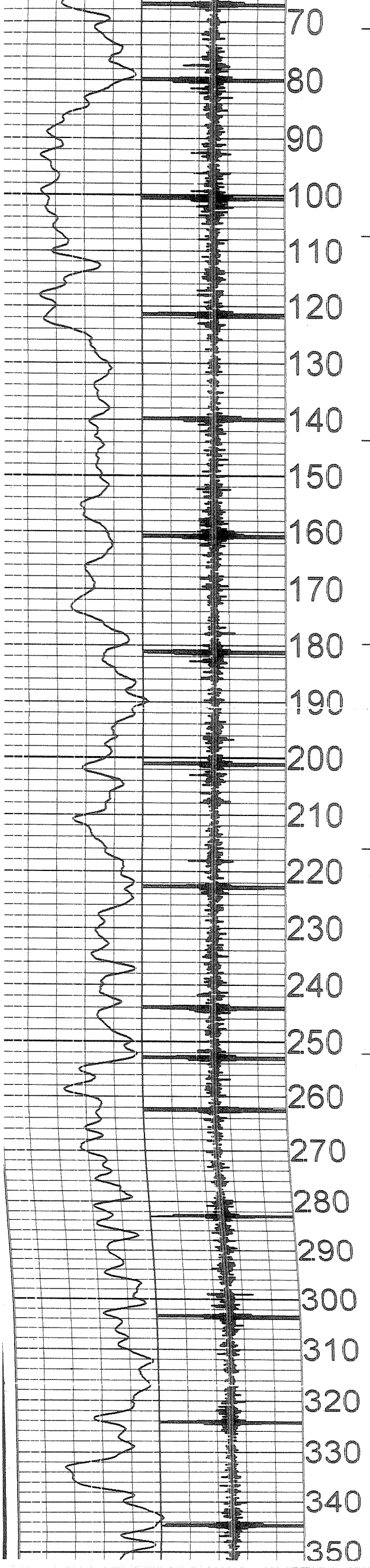
5" Caliper Log 5150 03/11/13

LOG PARAMETERS

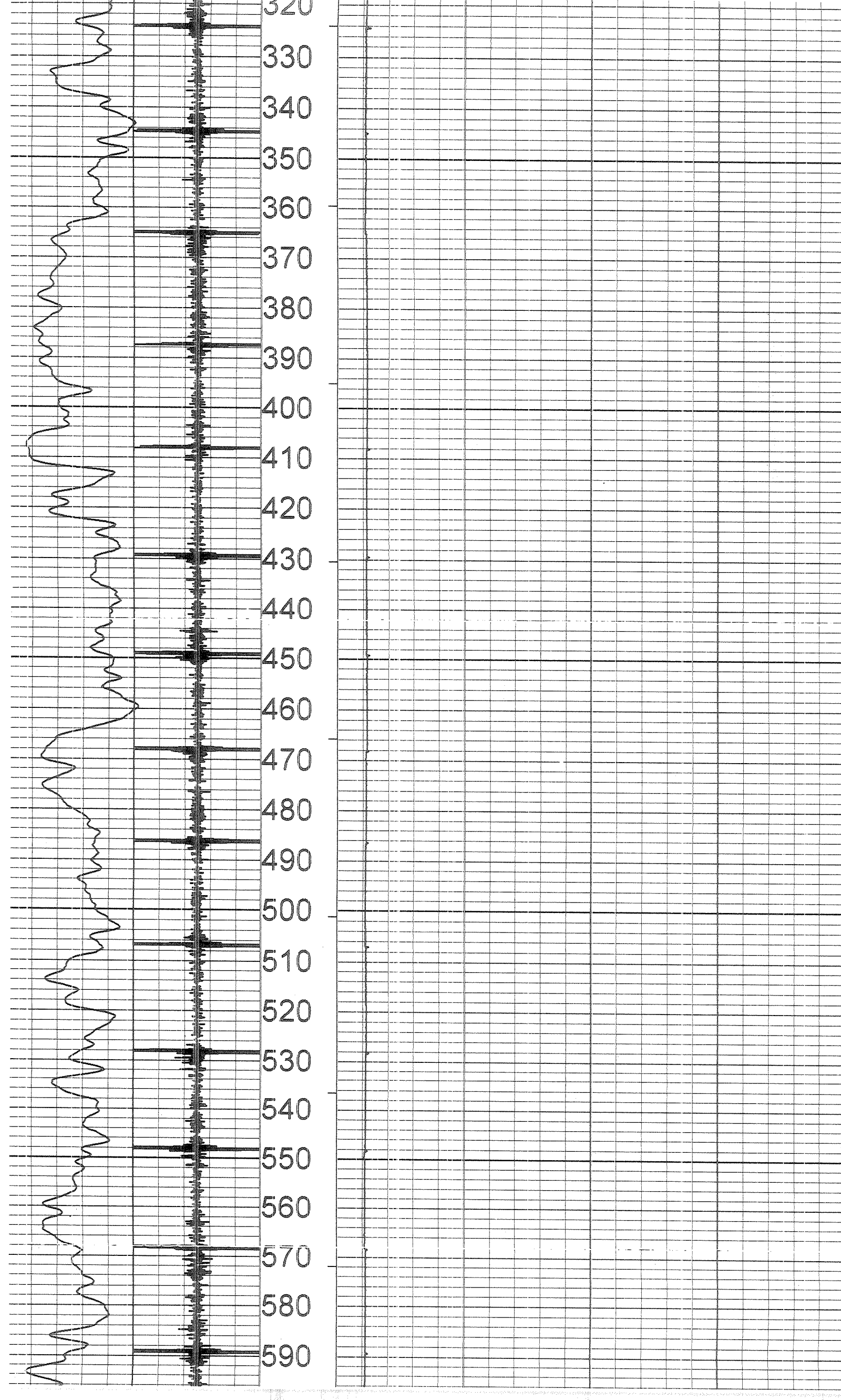
MATRIX DENSITY : 2.65
 NEUTRON MATRIX : SANDSTONE
 MATRIX DELTA T : 54
 MAGNETIC DECL : -8.6
 ELECT. CUTOFF : 99999
 BIT SIZE : 6.25

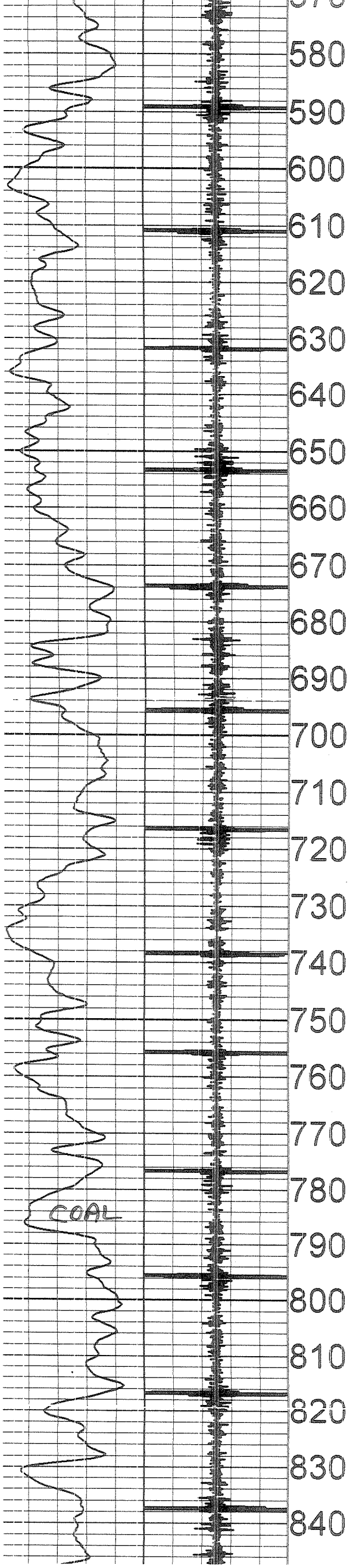
PRESENTATION NAME/DATE = 6074A.D 11/01/2012



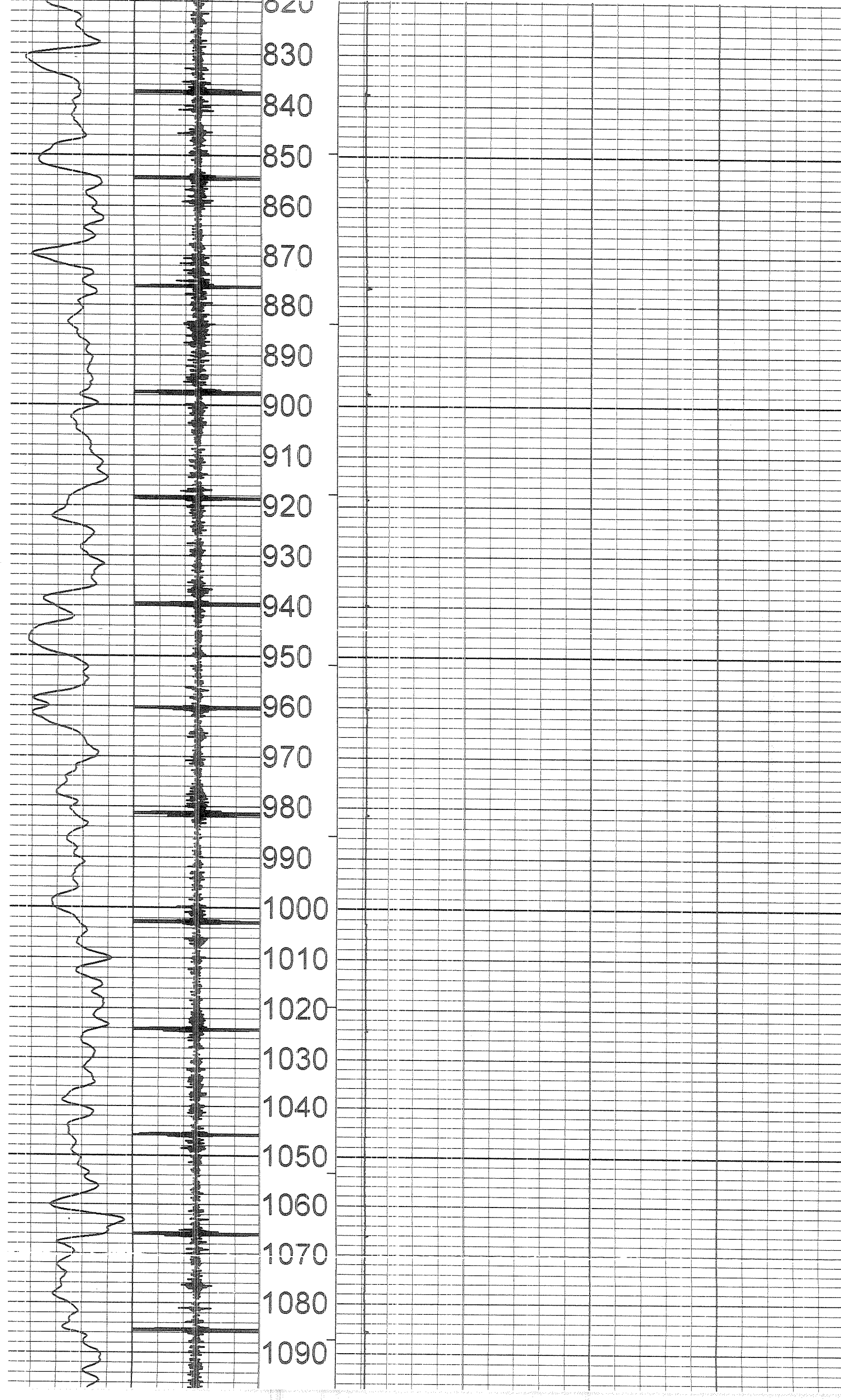


70
80
90
100
110
120
130
140
150
160
170
180
190
200
210
220
230
240
250
260
270
280
290
300
310
320
330
340
350





COAL



1080

1090

1100

1110

1120

1130

1140

1150

1160

1170

1180

1190

1200

1210

1220

1230

1240

1250

1260

1270

1280

1290

1300

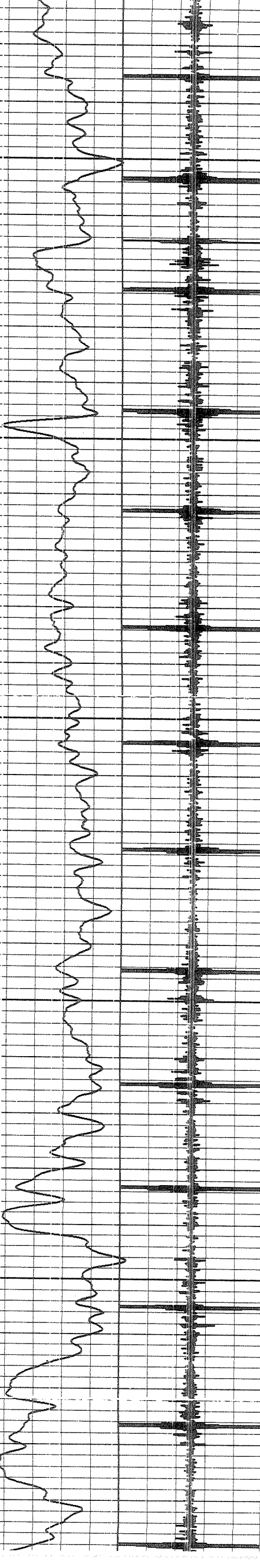
1310

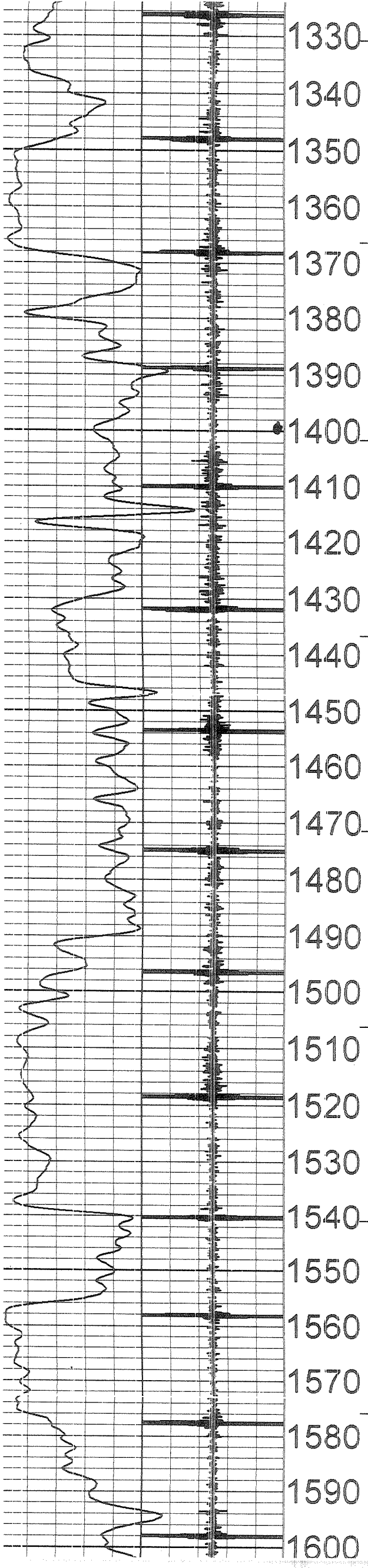
1320

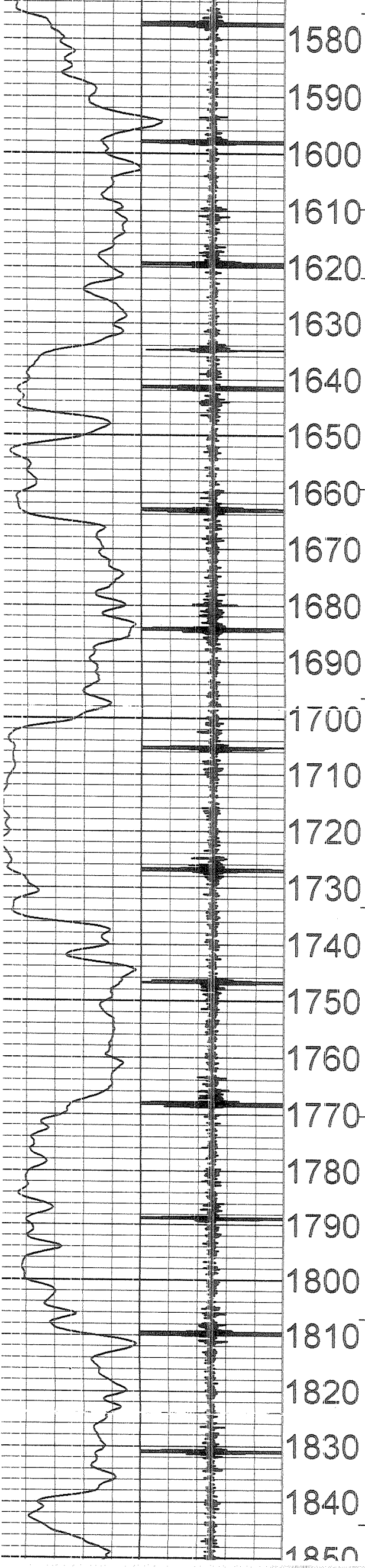
1330

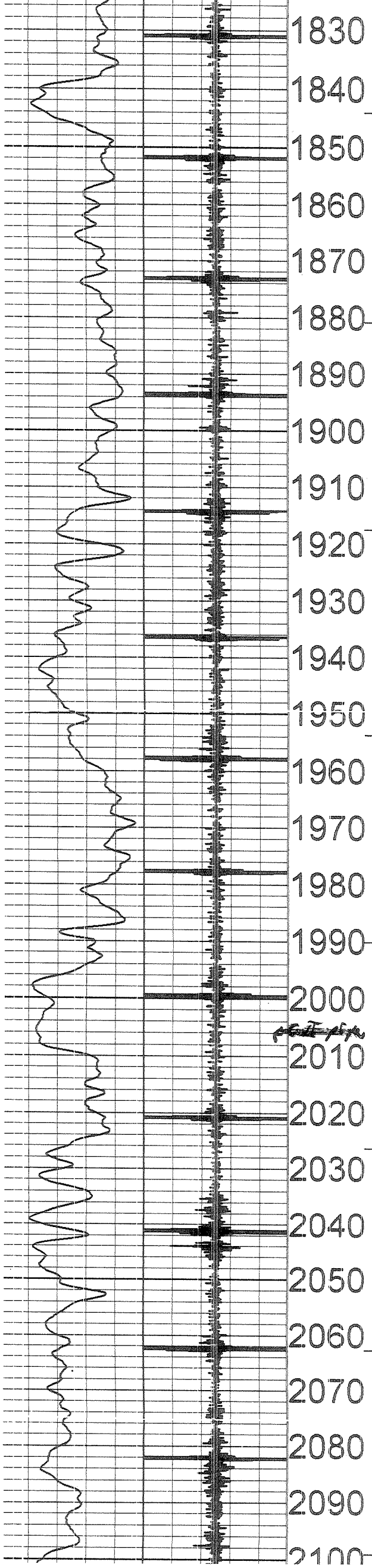
1340

1350









1830

1840

1850

1860

1870

1880

1890

1900

1910

1920

1930

1940

1950

1960

1970

1980

1990

2000

1875-1880

2010

2020

2030

2040

2050

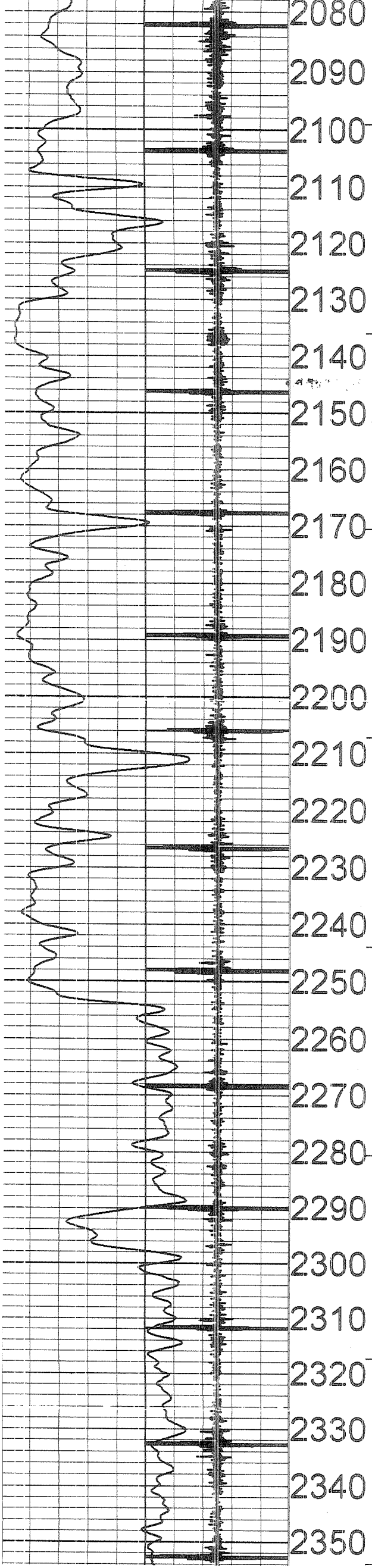
2060

2070

2080

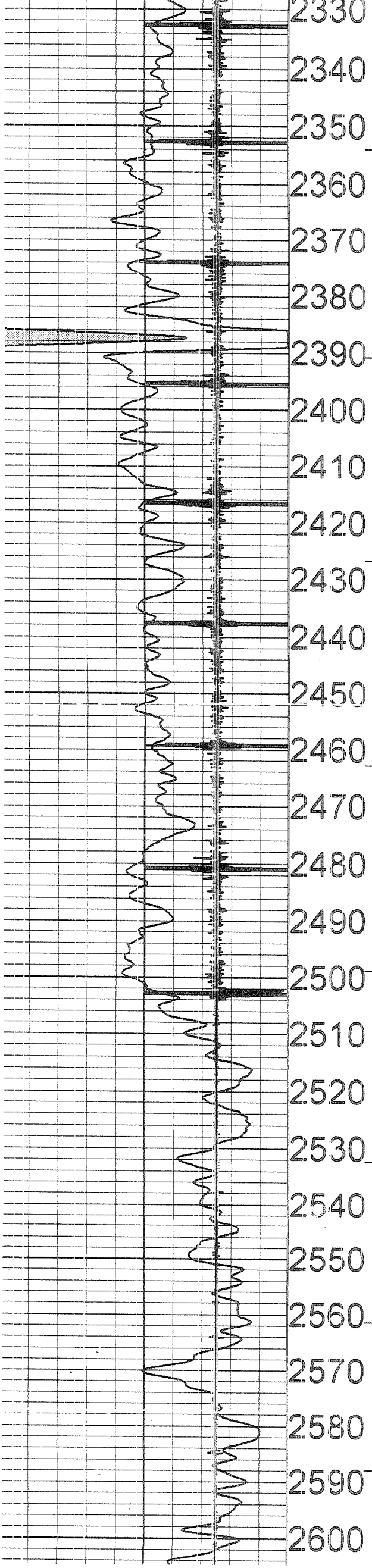
2090

2100

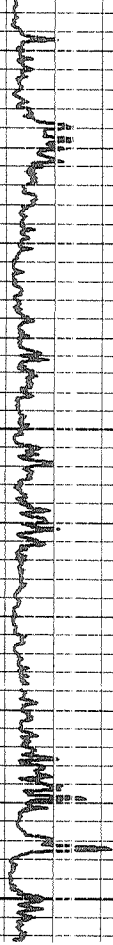


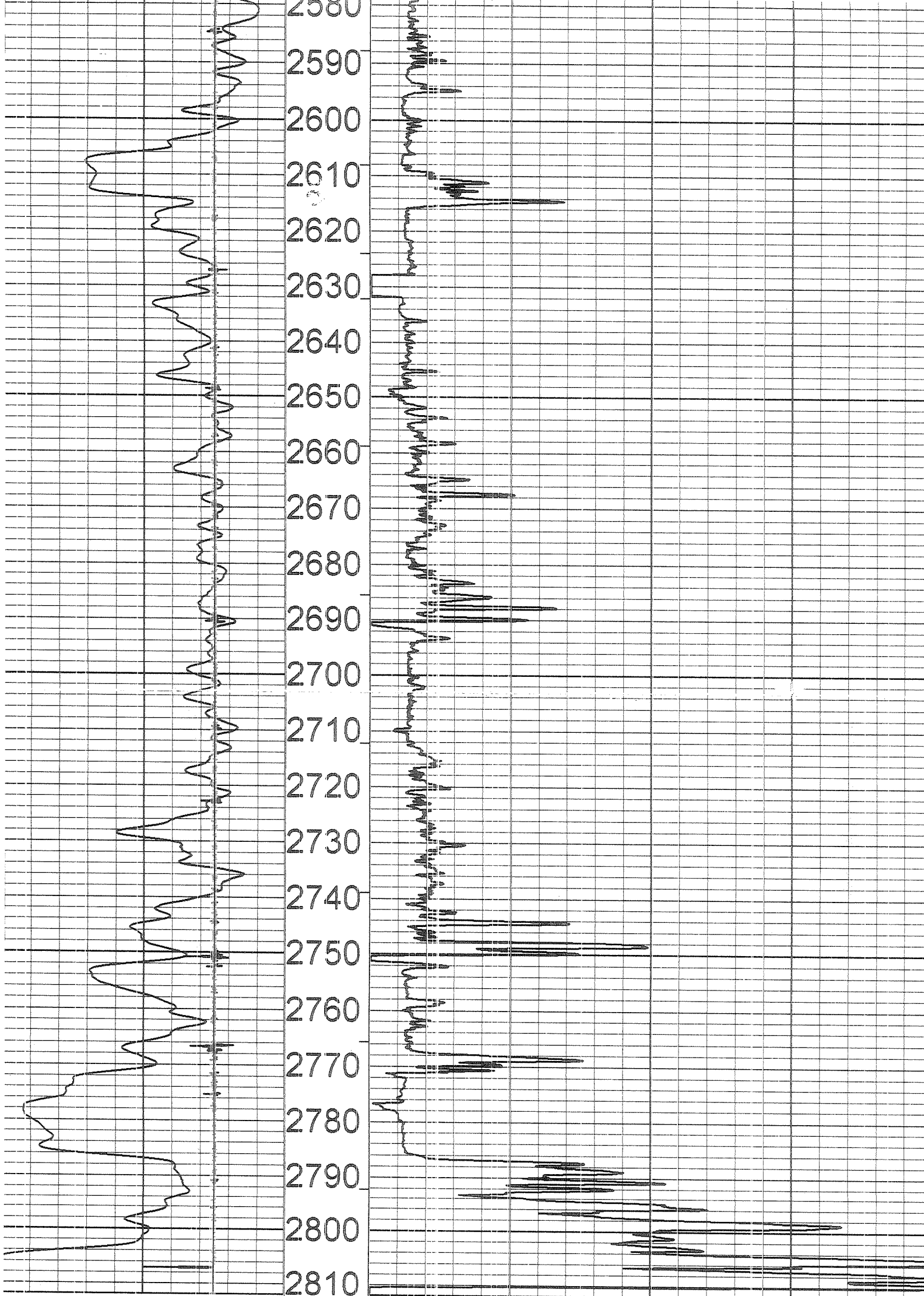
2080
2090
2100
2110
2120
2130
2140
2150
2160
2170
2180
2190
2200
2210
2220
2230
2240
2250
2260
2270
2280
2290
2300
2310
2320
2330
2340
2350

← Top of 96 5/2



Bottom of 5 1/2" casing





0	API-GR	200	SPEED->	4	5	6	7	8	9	10	11	12	13	INCH	15	16	17	18	19	20	21	22	23	2
	GAMMA			CALIPER																				
	-500	CPS	500																					
		CCL	FEET																					

5" Caliper Log 5150 03/11/13

LOG PARAMETERS

MATRIX DENSITY : 2.65	NEUTRON MATRIX : SANDSTONE	MATRIX DELTA T : 54
MAGNETIC DECL : -8.6	ELECT. CUTOFF : 99999	BIT SIZE : 6.25

LOG PARAMETERS

MATRIX DENSITY : 2.65

NEUTRON MATRIX : SANDSTONE

MATRIX DELTA T : 54

MAGNETIC DECL : -8.6

ELECT. CUTOFF : 99999

BIT SIZE : 6.25

PRESENTATION NAME/DATE = 6074A.0 11/01/2012

TOOL CALIBRATION 5150 03/11/13 19:49
 TOOL 6074A TM VERSION 2
 SERIAL NUMBER 2573

	DATE	TIME	SENSOR	STANDARD	RESPONSE
1	Sep09,11	12:32:43	GAMMA	0.000 [API-GR]	1.000 [CPS]
	Sep09,11	12:32:43	GAMMA	340.000 [API-GR]	340.000 [CPS]
2	Mar06,13	14:05:46	CALIPER	6.000 [INCH]	114900.000 [CPS]
	Mar06,13	14:05:46	CALIPER	16.000 [INCH]	209985.000 [CPS]
3	Dec03,10	16:00:09	CALIPERL	Default [CPS]	Default [CPS]
	Dec03,10	16:00:09	CALIPERL	Default [CPS]	Default [CPS]
4	Dec03,10	16:00:09	CALIPERX	Default [CPS]	Default [CPS]
	Dec03,10	16:00:09	CALIPERX	Default [CPS]	Default [CPS]