



# Windoos 2244H MD

(Scale: 1"=100')

Company: XTO

State: WV

Well: Windoos #2244H

County: Harrison

Field: Marcellus Shale

Country: USA

Well ID: 47-330-5406

Job Number: DDP4-100363

Location: Jane Lew

Operator 1: B Holdridge

Operator 2: D Krobusek

Elev KB: 1340.77'  
Elev DF: 1340.77'  
Elev GL: 1324.77'

Comment 1: Surface Coordinates:

Comment 2: X: 1791984.6

Comment 3: Y: 229323.45

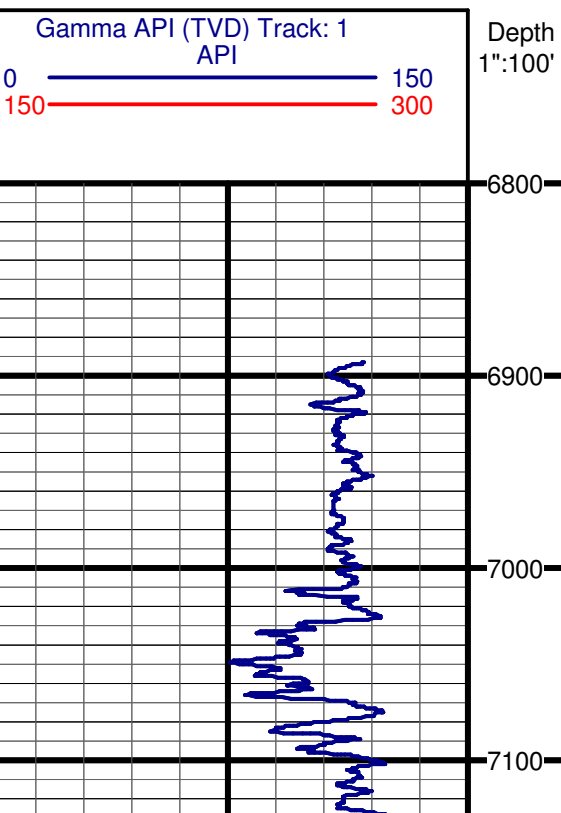
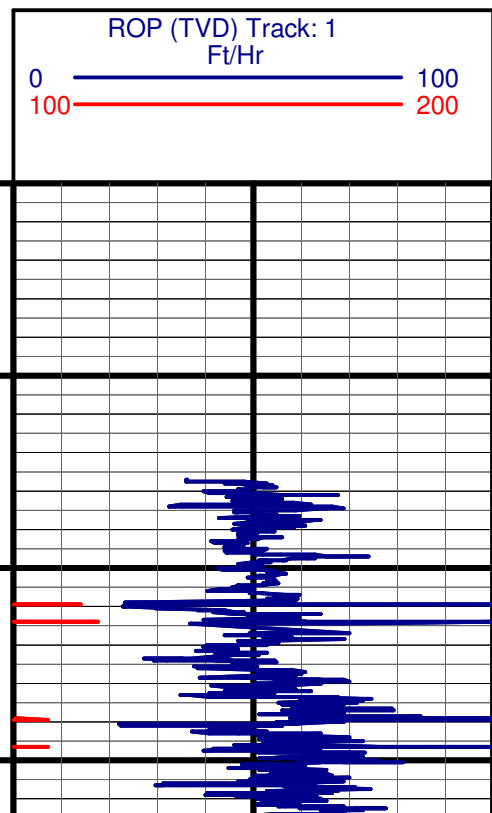
Comment 4:

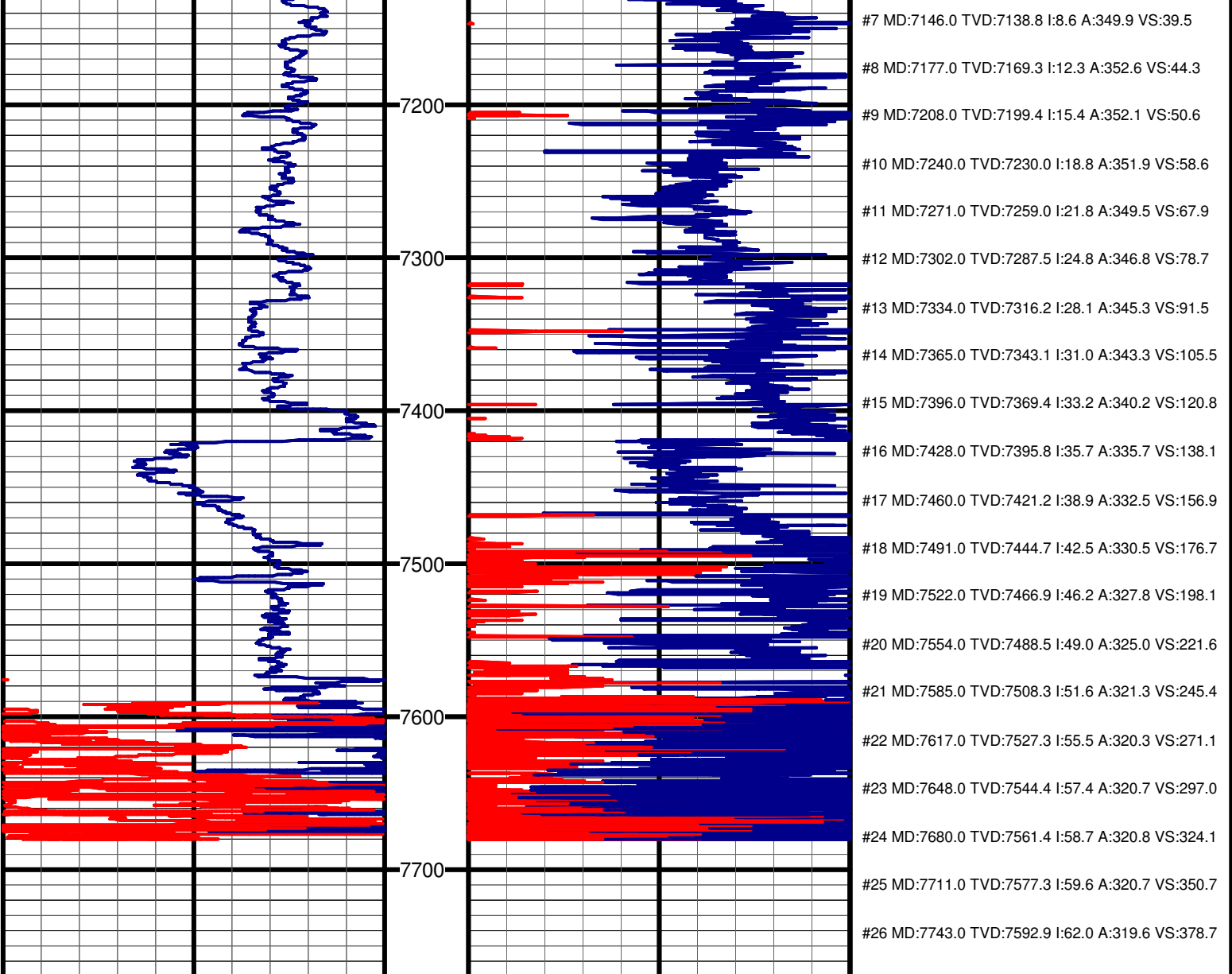
Comment 5:

Hole Data			Casing Record		
Size	From	To	Size	From	To
8 3/4"	6961'	10437'	13 3/8"	0'	296'
			9 5/8"	0'	2669'

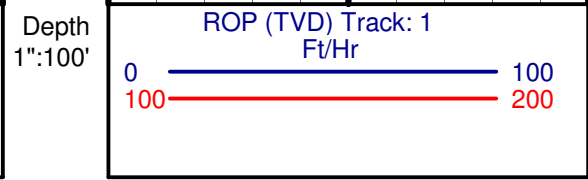
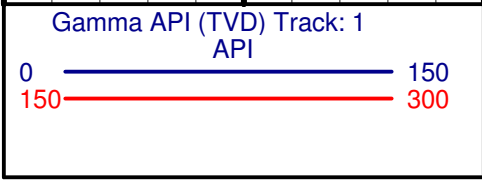
Tool Run Data		Run #1	Run #2	Run #3	Run #4	Run #5
Tool S/N	176	176				
Cal Factor	4.06	4.06				
Gamma Offset	64'	63'				
Start Depth	6961'	9217'				
Start Date	12/29/10	1/1/11				
Start Time	03:00	06:00				
End Depth	9217'	10437'				
End Date	1/1/11	1/3/11				
End Time	04:00	04:00				

#0 MD:6888.0 TVD:6881.5 I:5.7 A:174.6 VS:43.2
#1 MD:6958.0 TVD:6951.2 I:4.0 A:163.4 VS:38.1
#2 MD:6989.0 TVD:6982.2 I:3.3 A:163.1 VS:36.3
#3 MD:7021.0 TVD:7014.1 I:2.7 A:166.0 VS:34.8
#4 MD:7052.0 TVD:7045.1 I:1.1 A:200.4 VS:34.0
#5 MD:7083.0 TVD:7076.1 I:2.0 A:325.0 VS:34.4
#6 MD:7115.0 TVD:7108.0 I:5.1 A:343.4 VS:36.2





#7 MD:7146.0 TVD:7138.8 I:8.6 A:349.9 VS:39.5
#8 MD:7177.0 TVD:7169.3 I:12.3 A:352.6 VS:44.3
#9 MD:7208.0 TVD:7199.4 I:15.4 A:352.1 VS:50.6
#10 MD:7240.0 TVD:7230.0 I:18.8 A:351.9 VS:58.6
#11 MD:7271.0 TVD:7259.0 I:21.8 A:349.5 VS:67.9
#12 MD:7302.0 TVD:7287.5 I:24.8 A:346.8 VS:78.7
#13 MD:7334.0 TVD:7316.2 I:28.1 A:345.3 VS:91.5
#14 MD:7365.0 TVD:7343.1 I:31.0 A:343.3 VS:105.5
#15 MD:7396.0 TVD:7369.4 I:33.2 A:340.2 VS:120.8
#16 MD:7428.0 TVD:7395.8 I:35.7 A:335.7 VS:138.1
#17 MD:7460.0 TVD:7421.2 I:38.9 A:332.5 VS:156.9
#18 MD:7491.0 TVD:7444.7 I:42.5 A:330.5 VS:176.7
#19 MD:7522.0 TVD:7466.9 I:46.2 A:327.8 VS:198.1
#20 MD:7554.0 TVD:7488.5 I:49.0 A:325.0 VS:221.6
#21 MD:7585.0 TVD:7508.3 I:51.6 A:321.3 VS:245.4
#22 MD:7617.0 TVD:7527.3 I:55.5 A:320.3 VS:271.1
#23 MD:7648.0 TVD:7544.4 I:57.4 A:320.7 VS:297.0
#24 MD:7680.0 TVD:7561.4 I:58.7 A:320.8 VS:324.1
#25 MD:7711.0 TVD:7577.3 I:59.6 A:320.7 VS:350.7
#26 MD:7743.0 TVD:7592.9 I:62.0 A:319.6 VS:378.7



Depth  
1":100'

