



RADIAL BOND LOG
GAMMA RAY
VDL,CCL

Company ANTERO RESOURCES CORPORATION
 Well OXFORD 97 HHS
 Field MARCELLUS
 County DODDRIDGE
 State WV

Company ANTERO RESOURCES CORPORATION
 Well OXFORD 97 HHS
 Field MARCELLUS
 County DODDRIDGE State WV

Location: API #: 47017065860000

AFE A06744

SEC TWP RGE

Elevation

Elevation

Permanent Datum
 Log Measured From
 Drilling Measured From

K.B.
 D.F.
 G.L.

Date	8-28-19						
Run Number	1						
Depth Driller	20464						
Depth Logger	7015						
Bottom Logged Interval	7015						
Top Log Interval	SURFACE						
Open Hole Size	N/A						
Type Fluid	WATER						
Density / Viscosity	N/A						
Max. Recorded Temp.	140.6 DEG						
Estimated Cement Top	SURFACE						
Time Well Ready	N/A						
Time Logger on Bottom	9:30AM						
Equipment Number	624874						
Location	BRIDGEPORT						
Recorded By	P DAVIDSON						
Witnessed By	DAVE GANDEE						
Borehole Record							
Run Number	Bit	From	To	Size	Weight	From	To
				5.5	23	20464	0
Casing Record							

<<< Fold Here >>>

All interpretations are opinions based on inferences from electrical or other measurements and we cannot and do not guarantee the accuracy or correctness of any interpretation, and we shall not, except in the case of gross or willful negligence on our part, be liable or responsible for any loss, costs, damages, or expenses incurred or sustained by anyone resulting from any interpretation made by any of our officers, agents or employees. These interpretations are also subject to our general terms and conditions set out in our current Price Schedule.

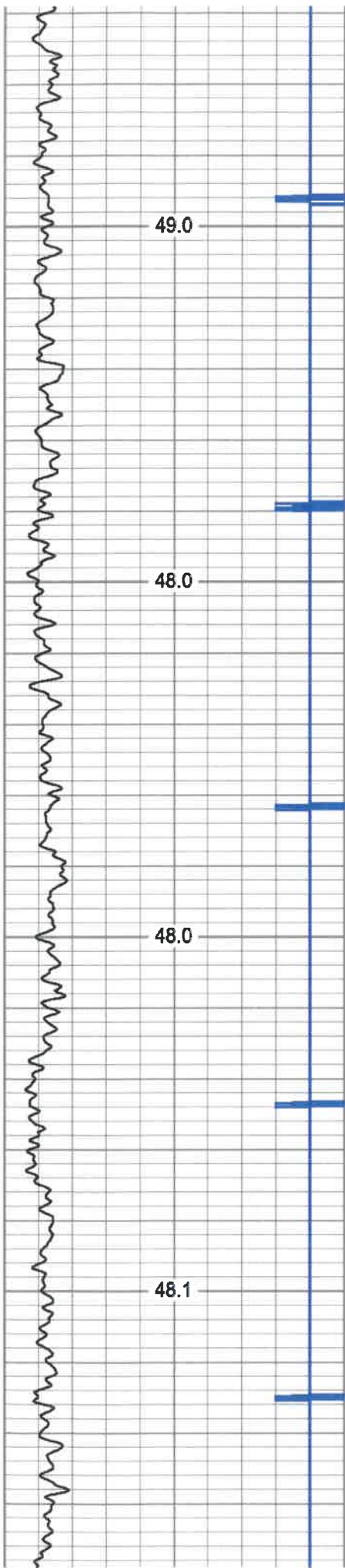
Comments

MARKER JOINT @ 6003'-60024'
 LOG TD 7015'
 CEMENT TOP @ SURFACE
 LOGGED UNDER 1500 PSI.

THANK YOU FOR CHOOSING KLX ENERGY



MAIN PASS 1500 PSI

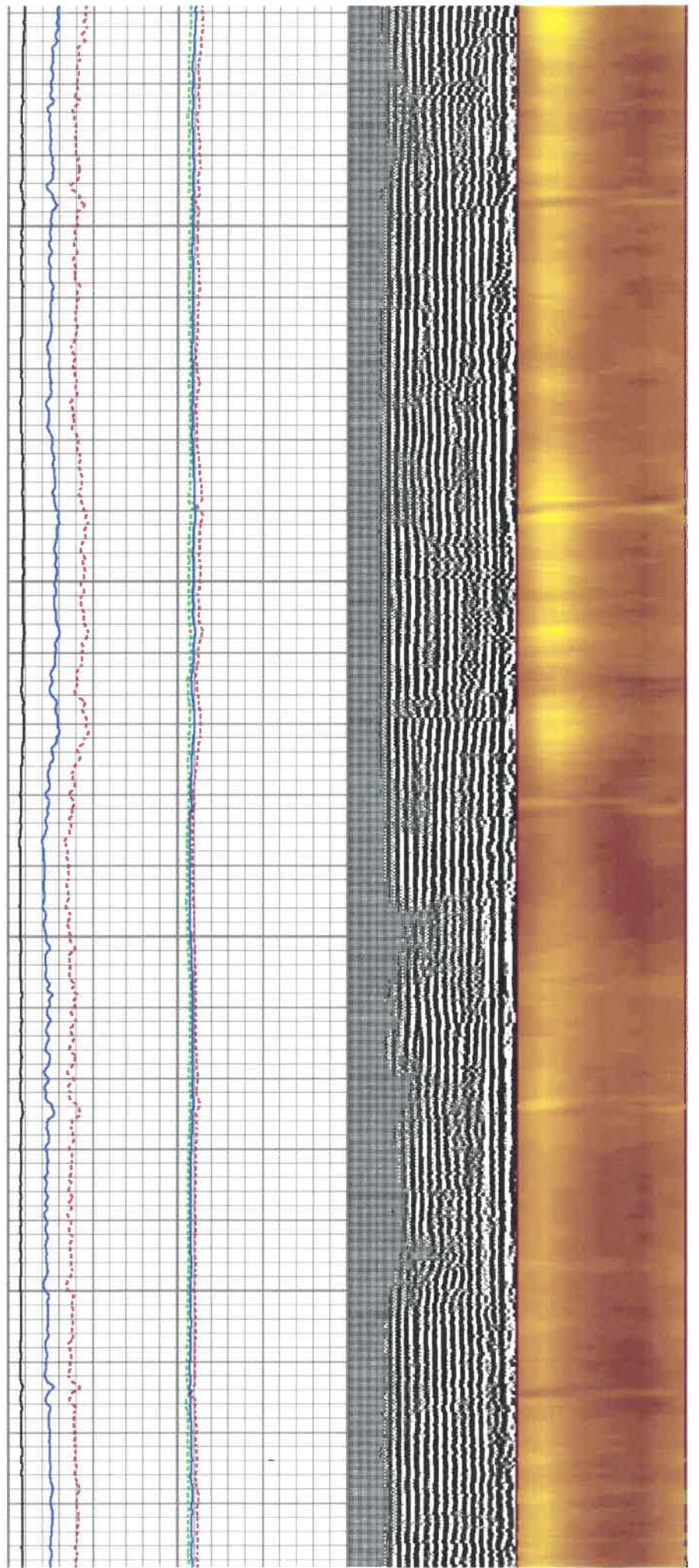


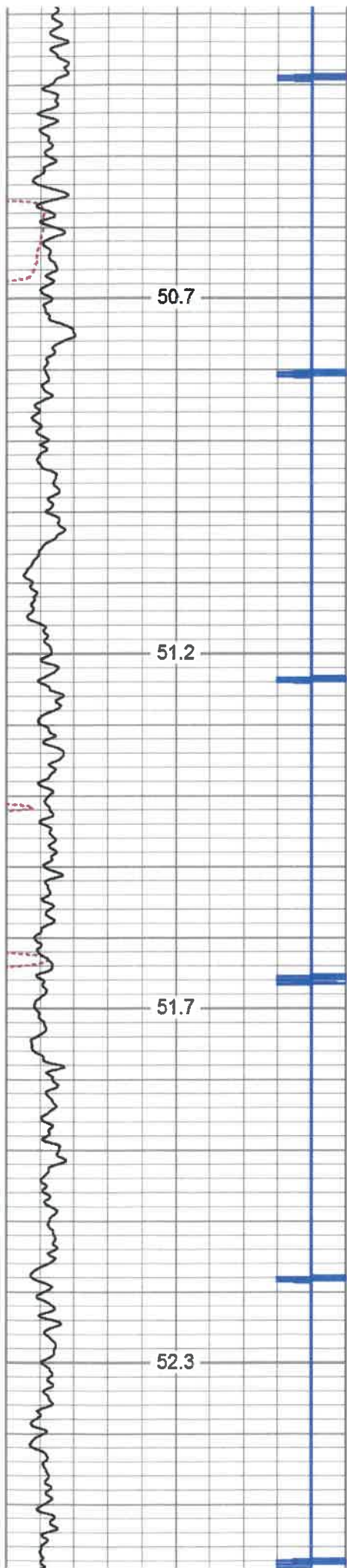
200

250

300

350



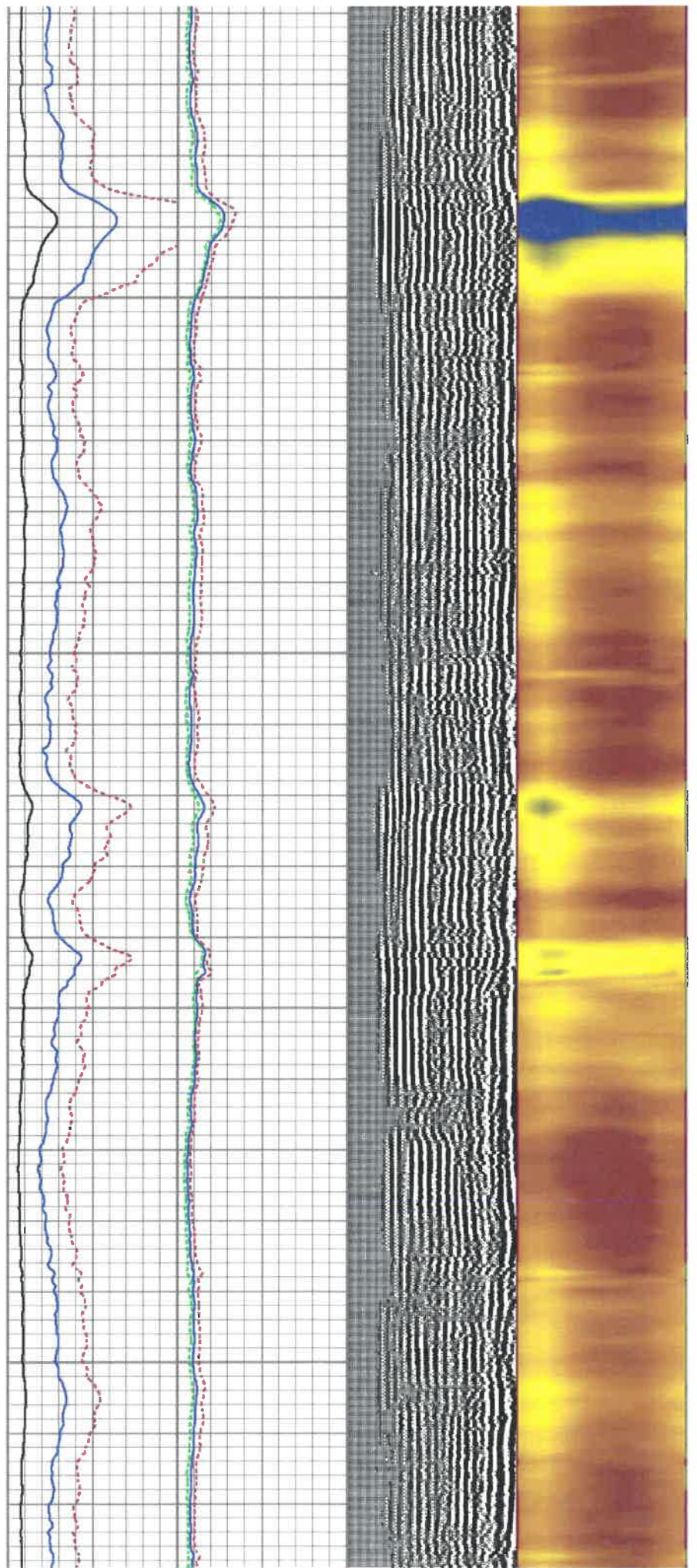


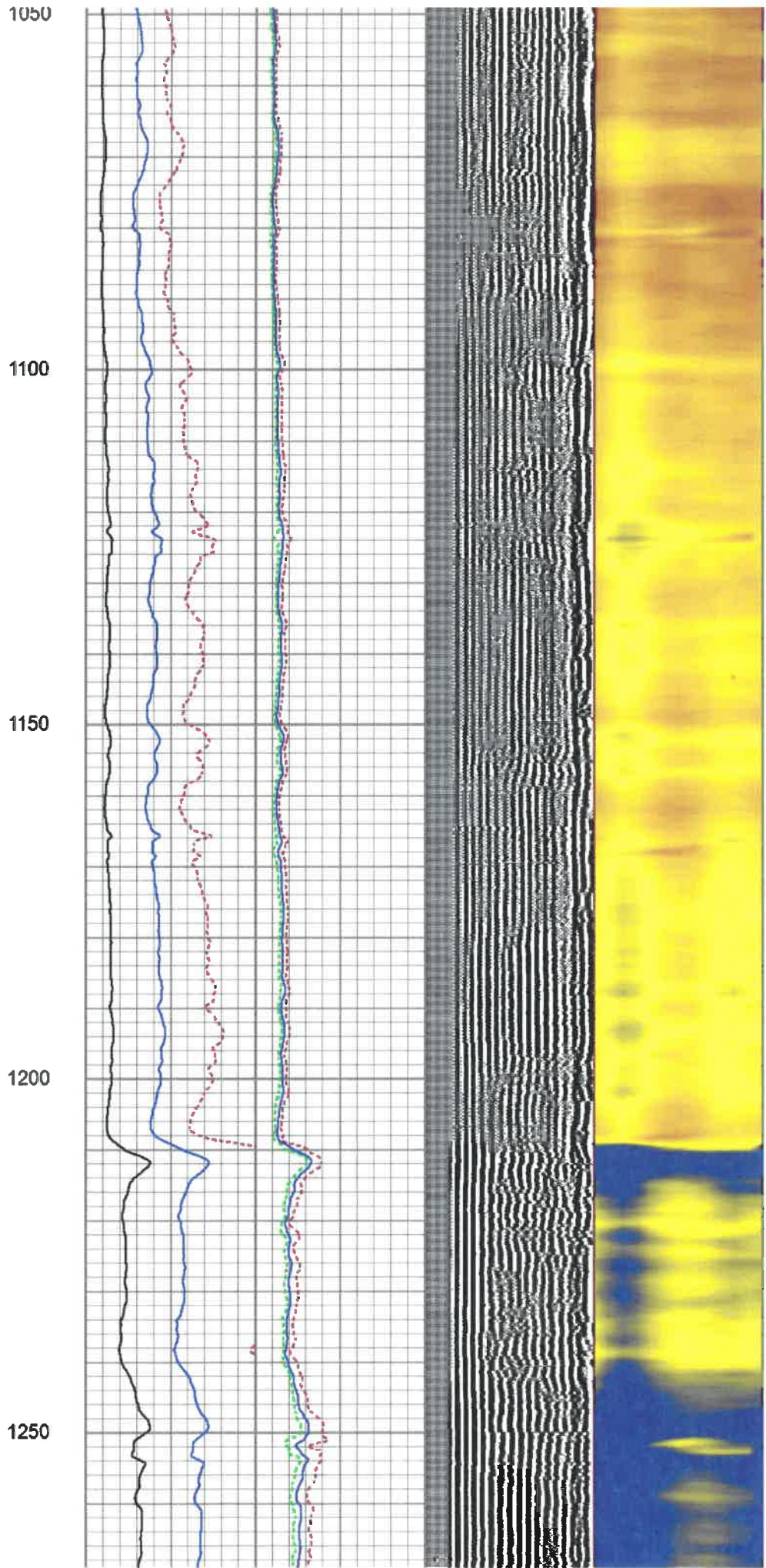
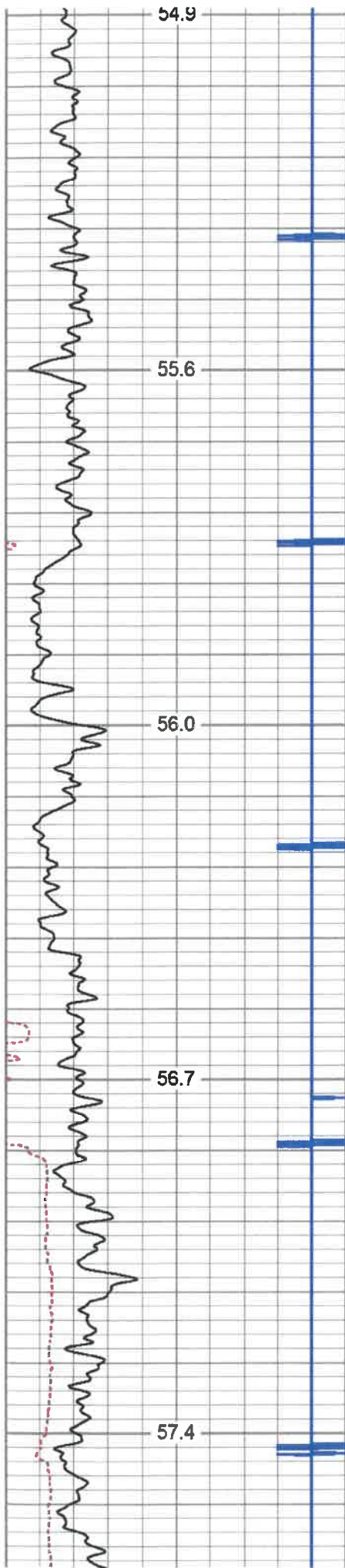
650

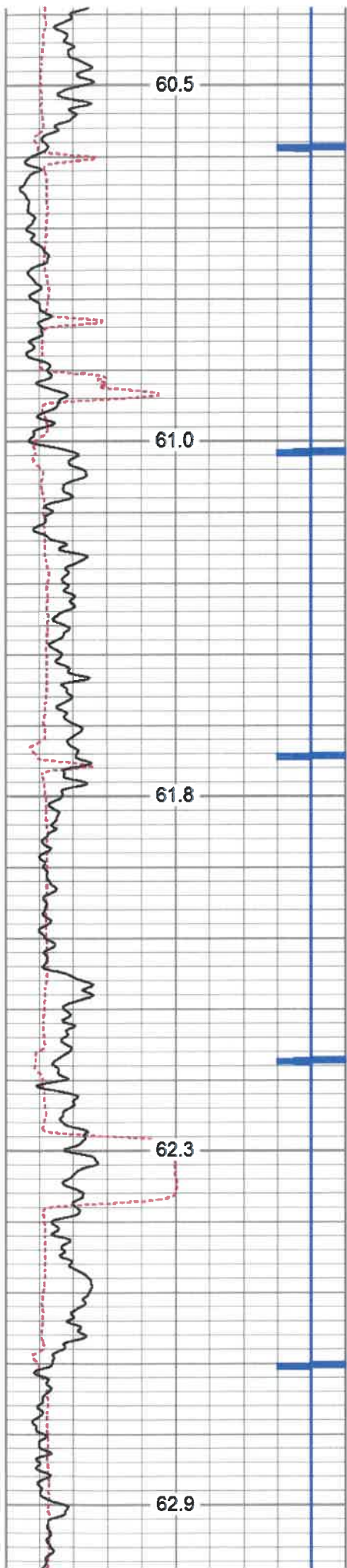
700

750

800







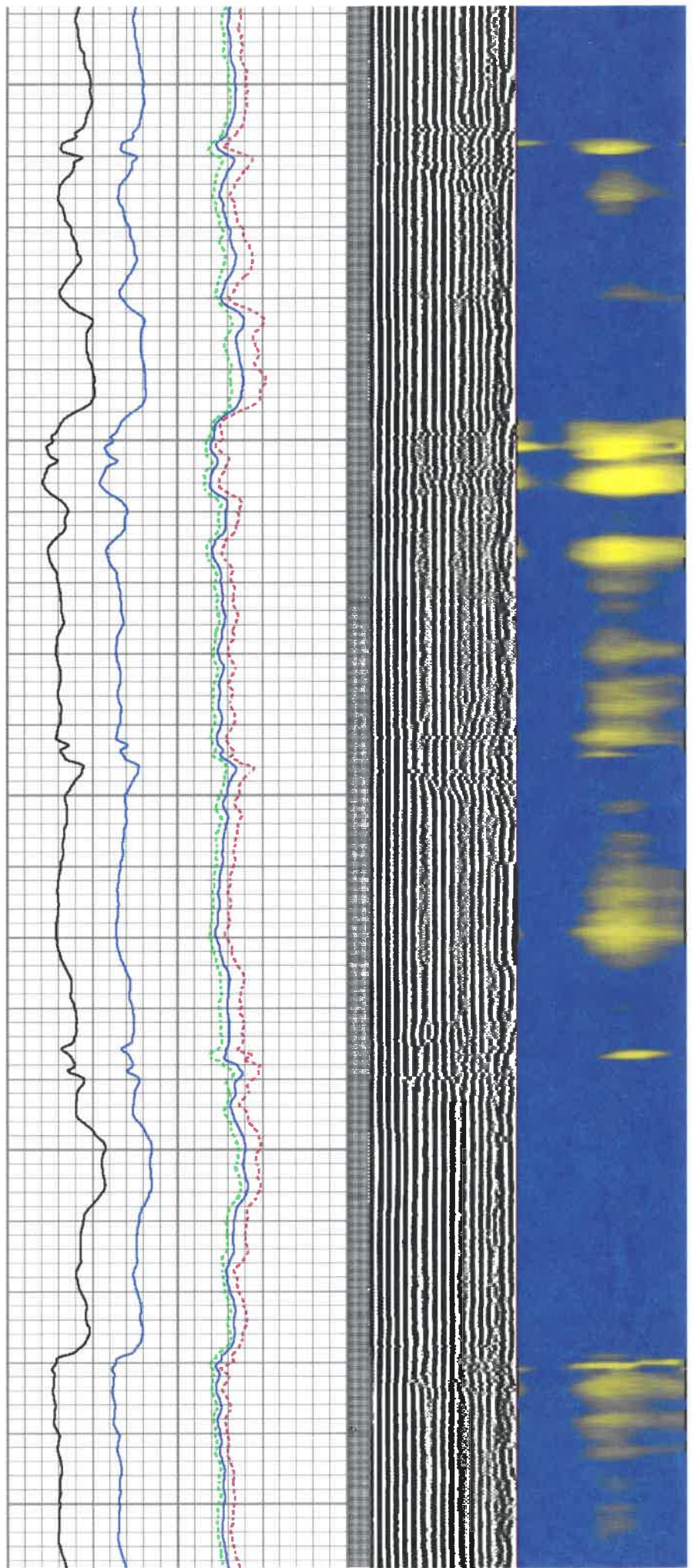
1500

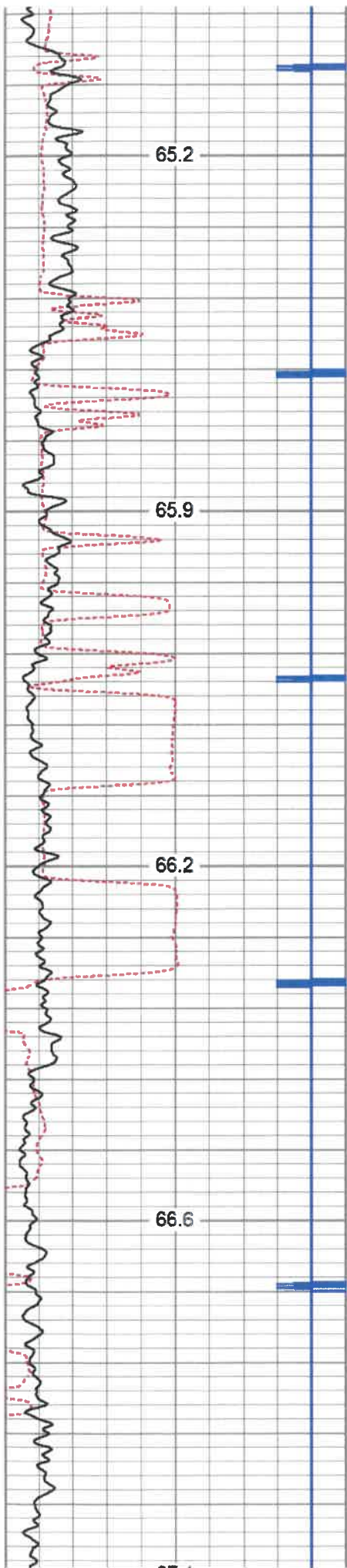
1550

1600

1650

1700



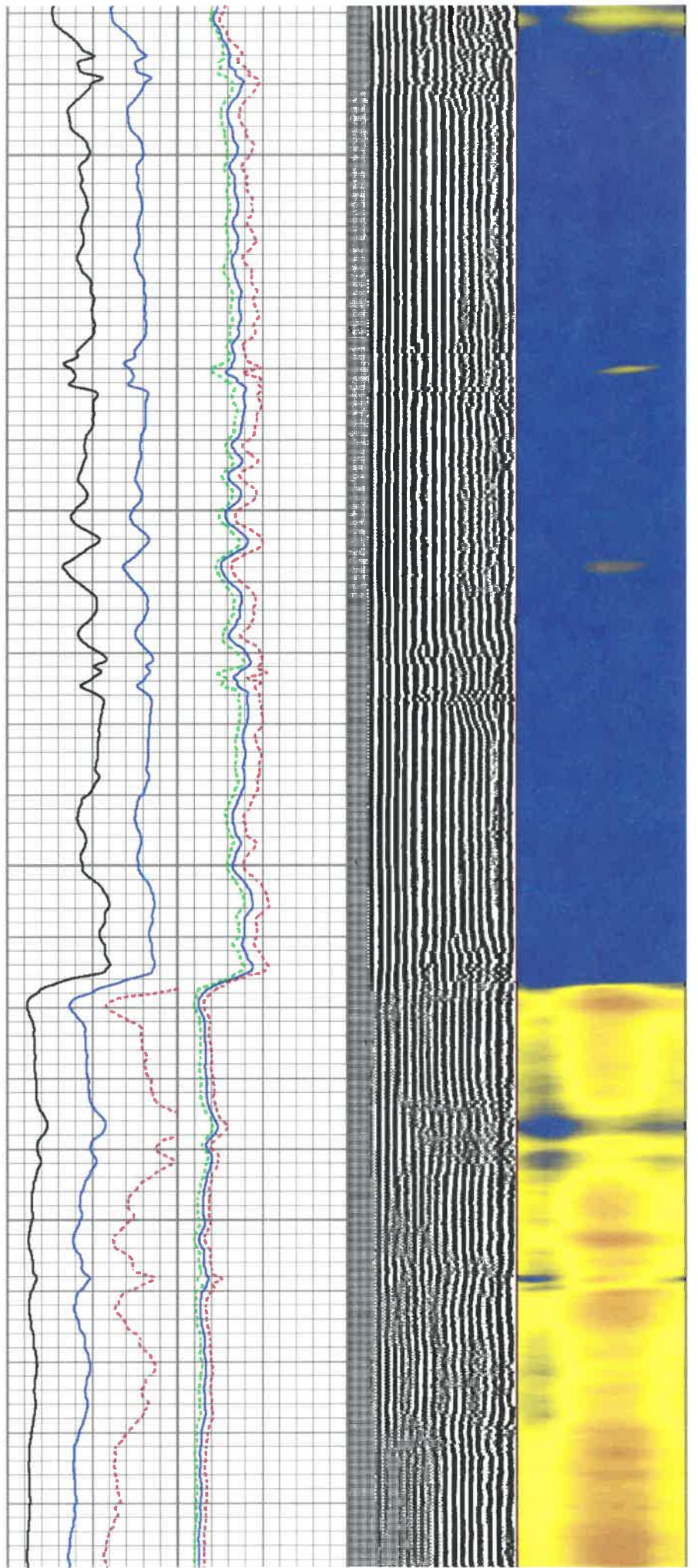


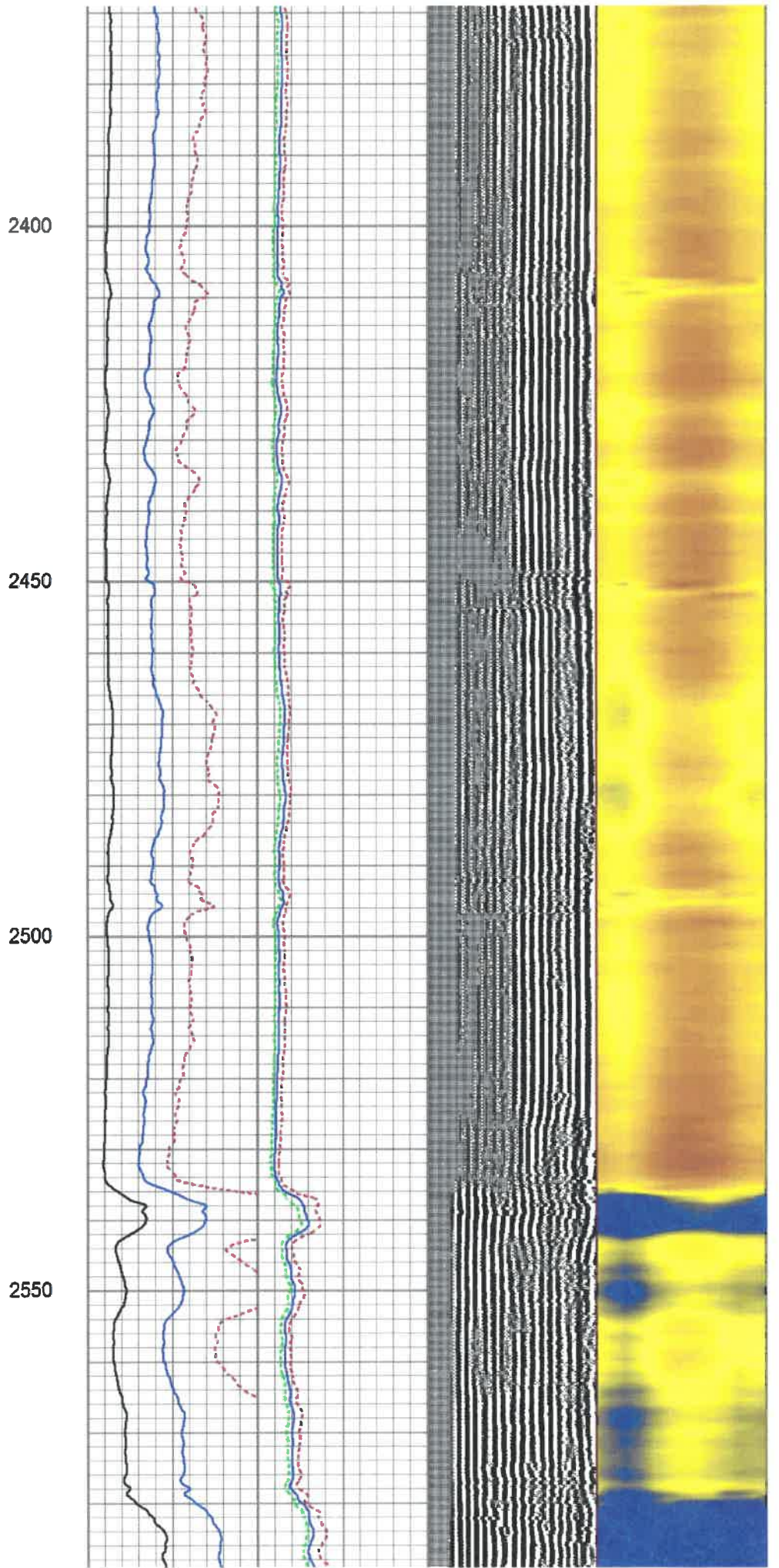
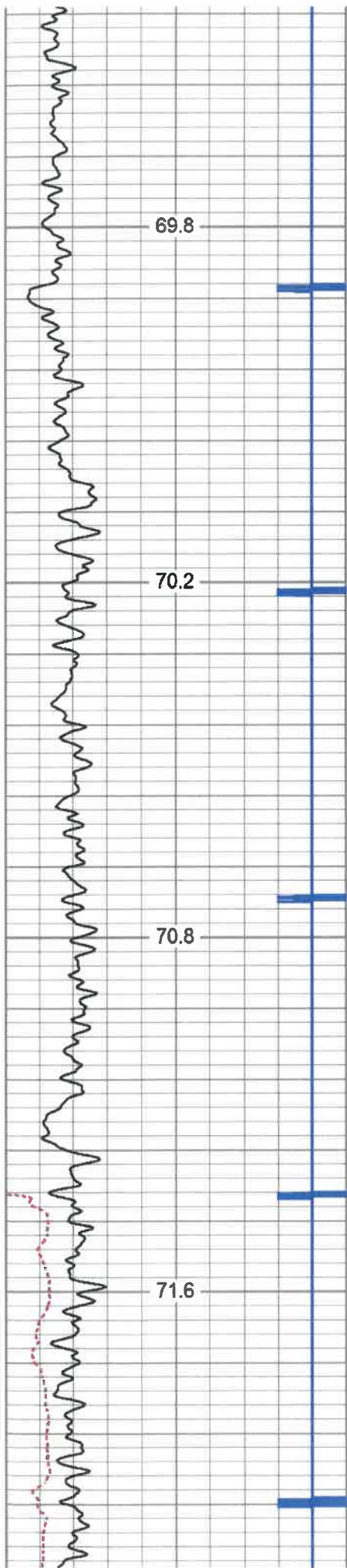
1950

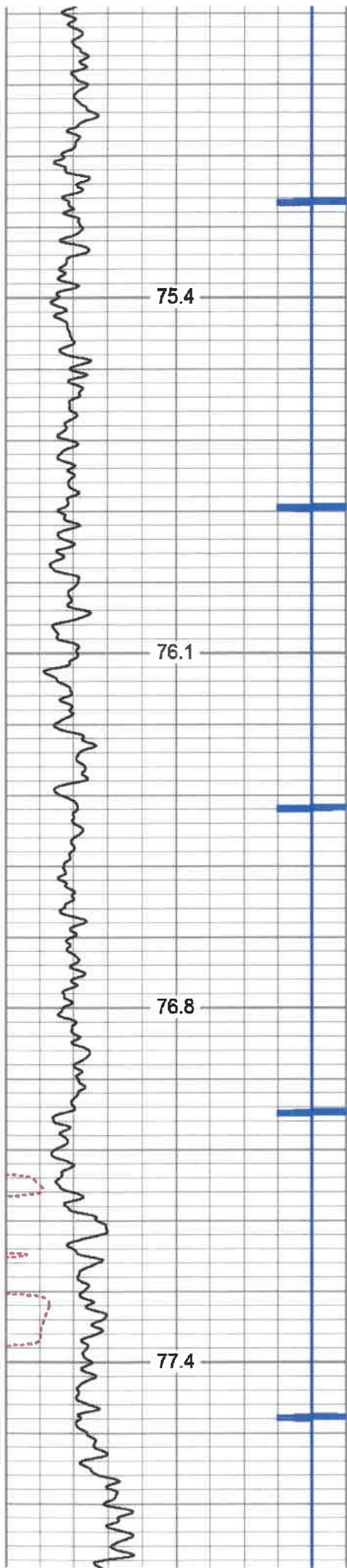
2000

2050

2100





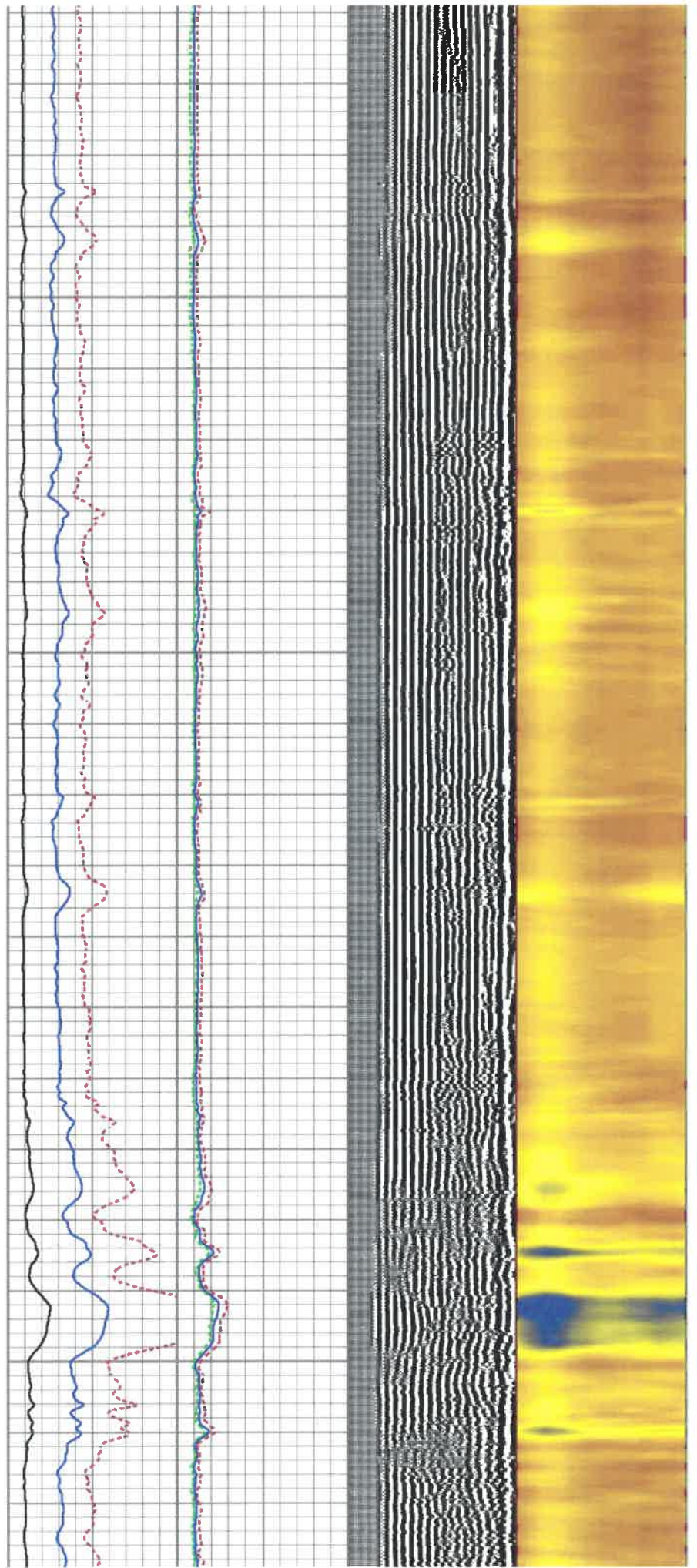


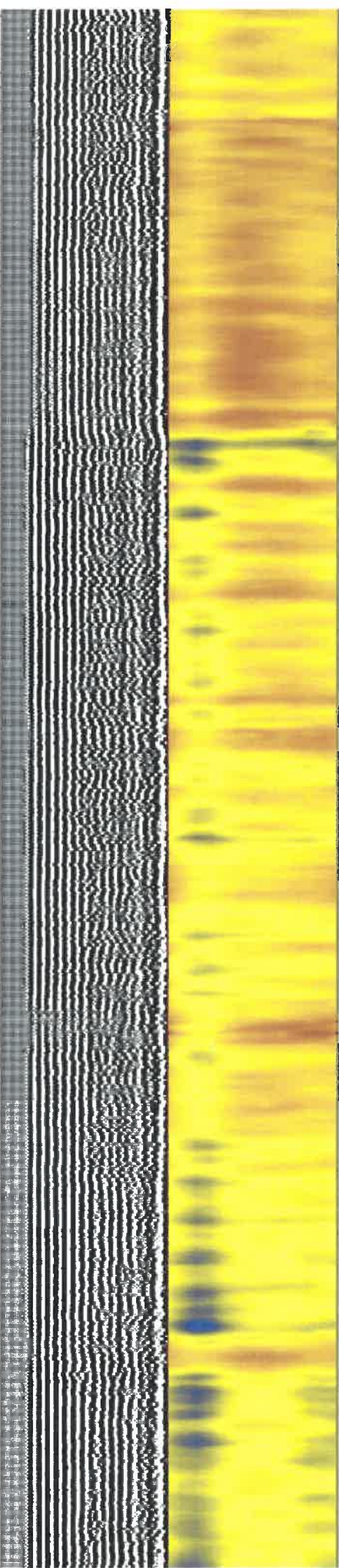
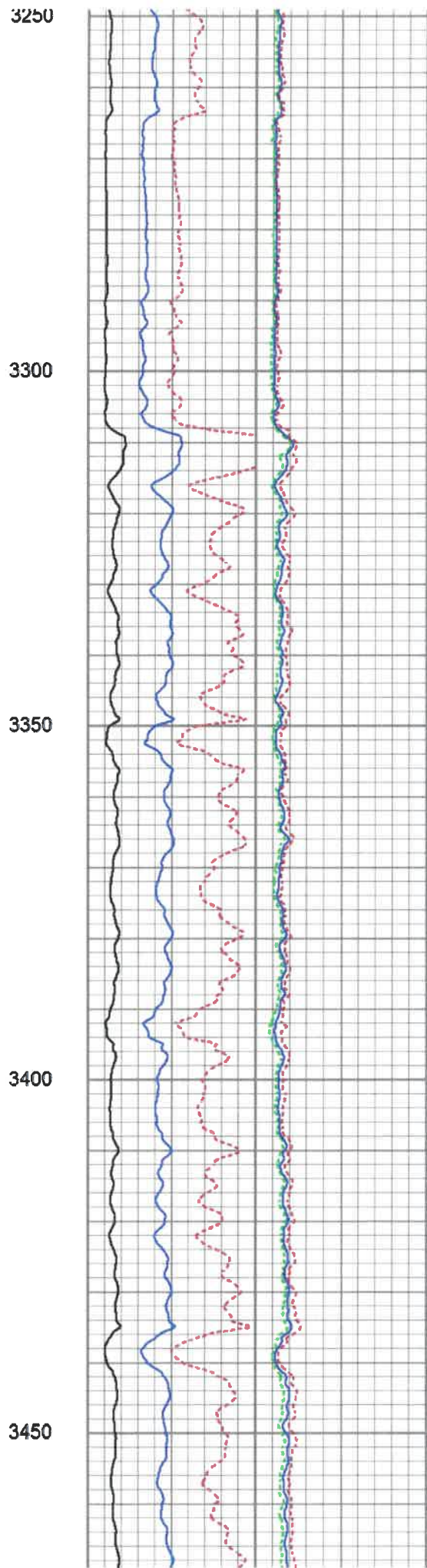
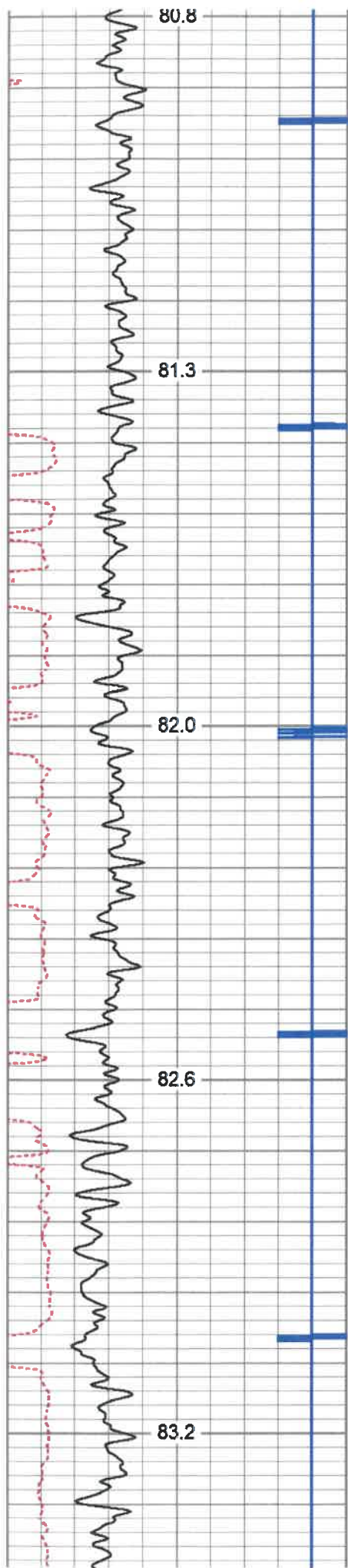
2850

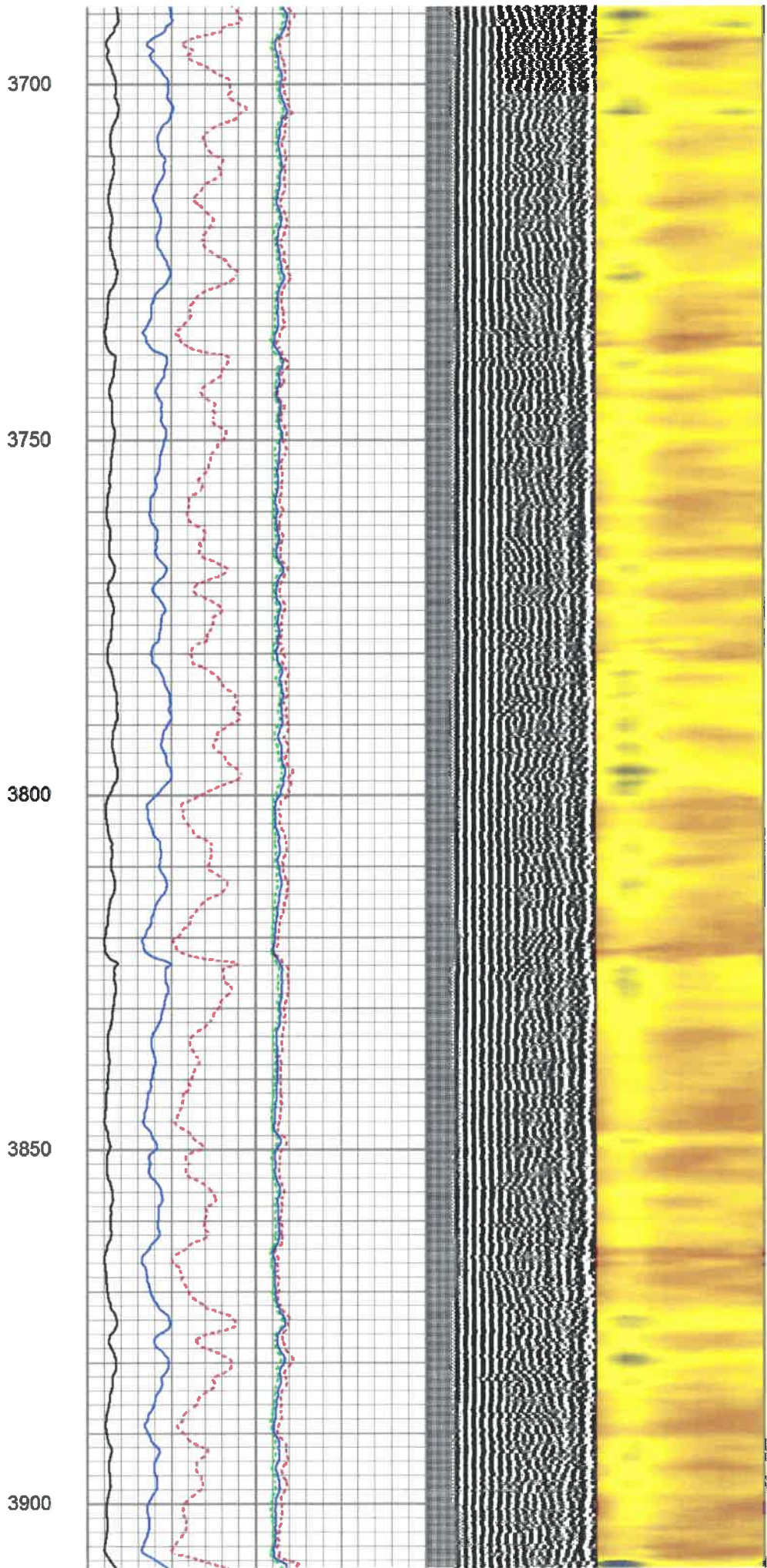
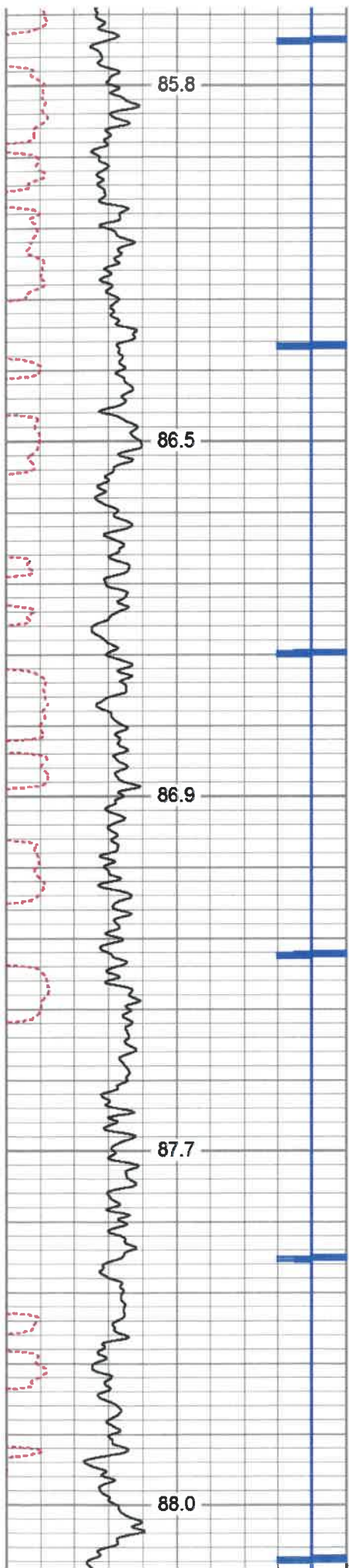
2900

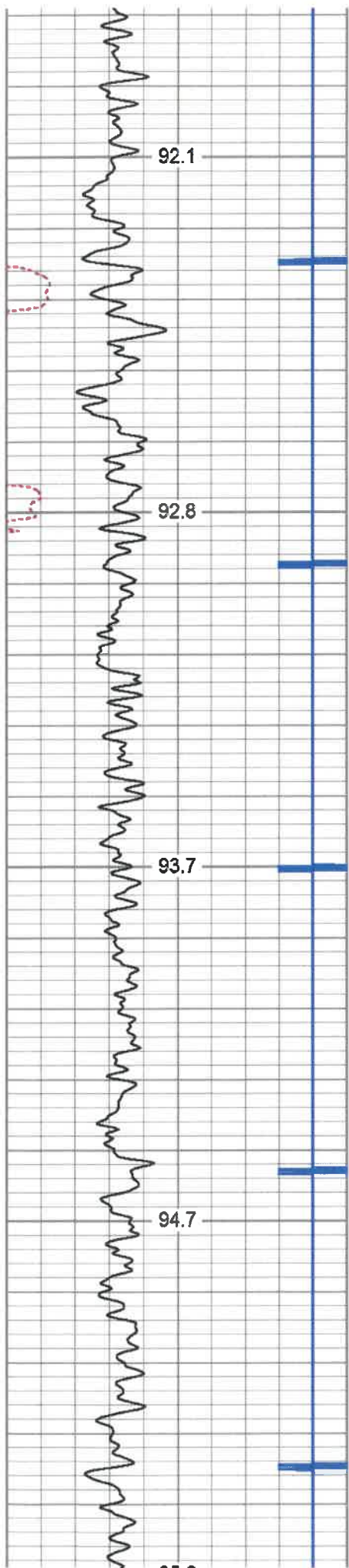
2950

3000







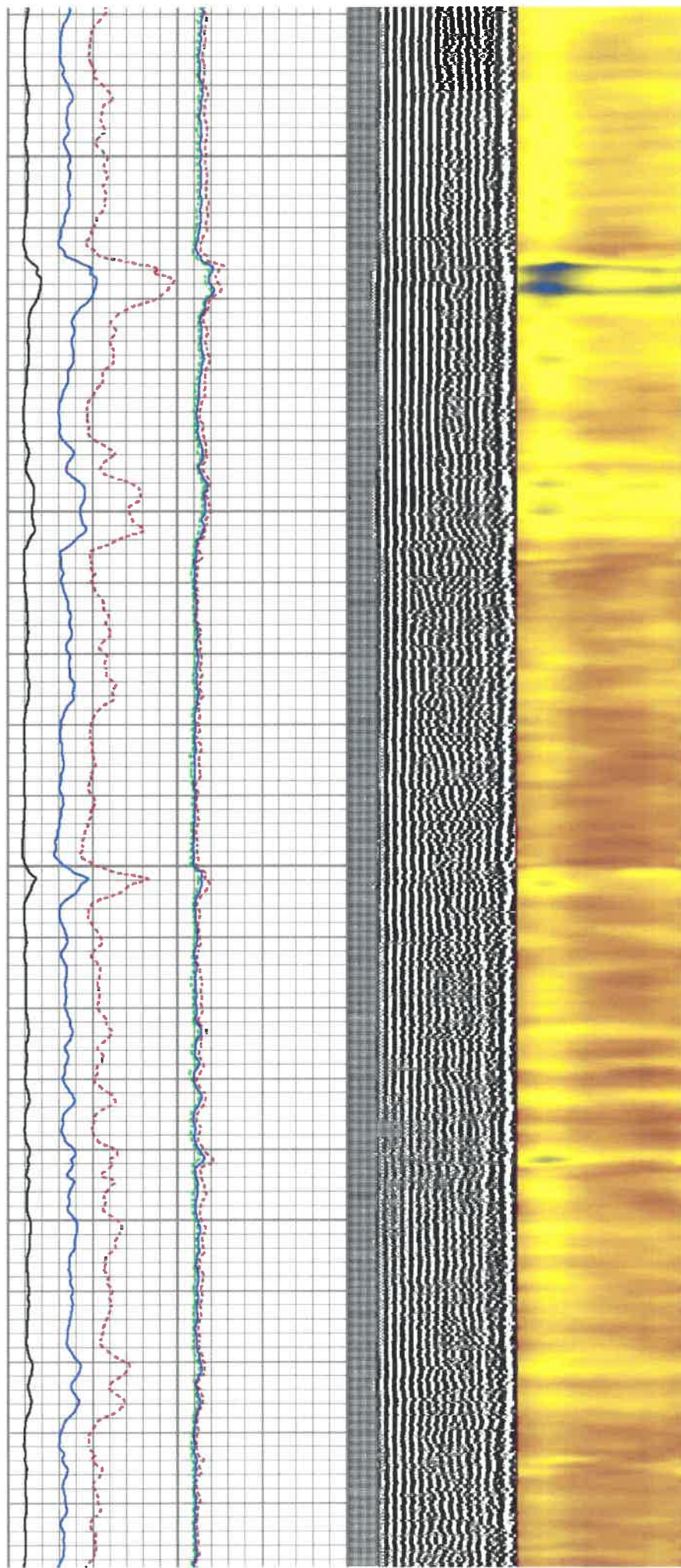


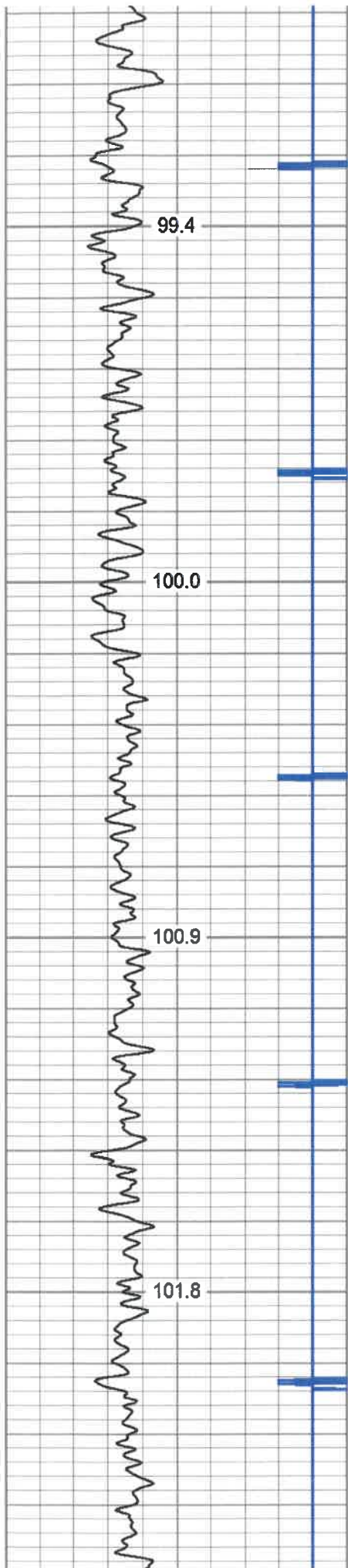
4150

4200

4250

4300



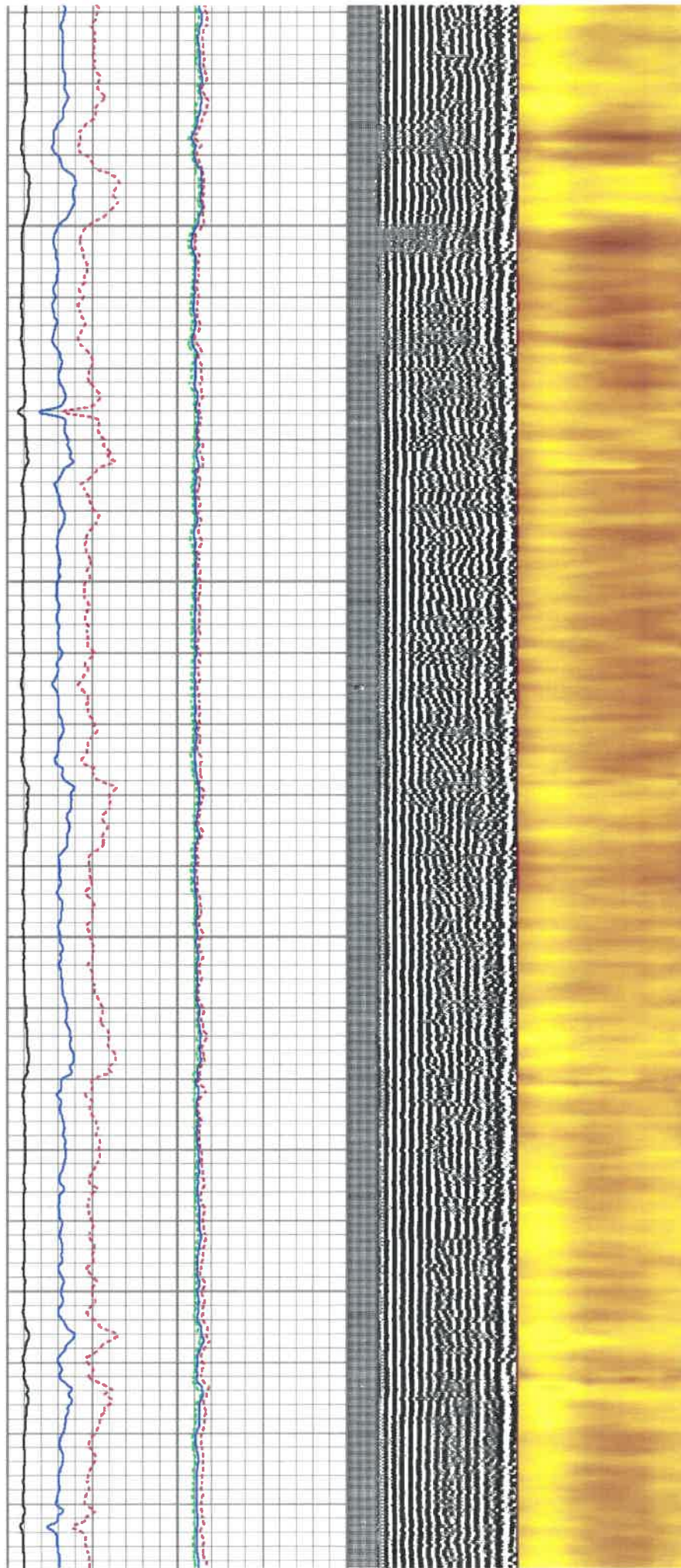


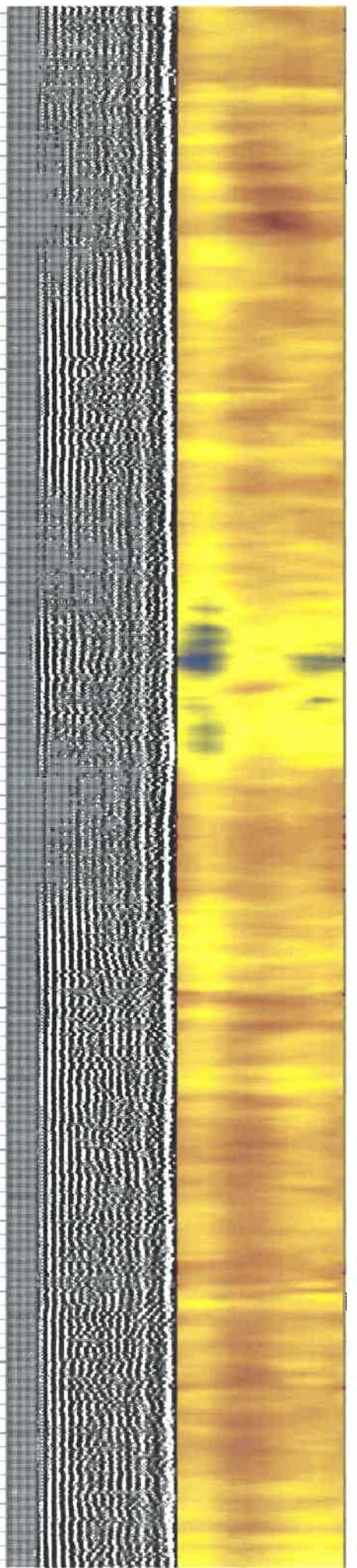
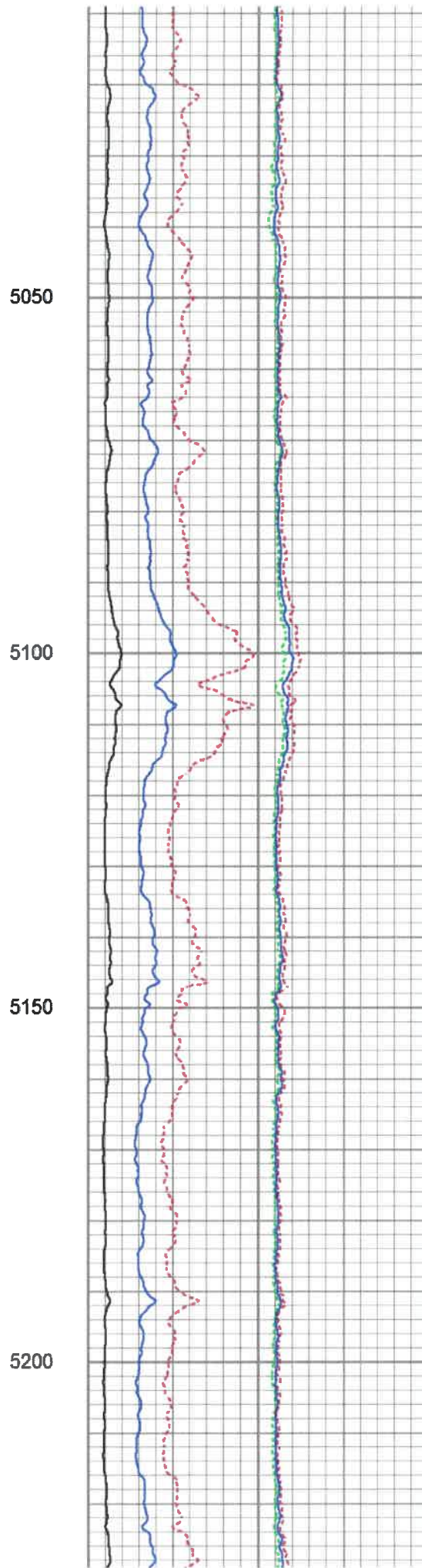
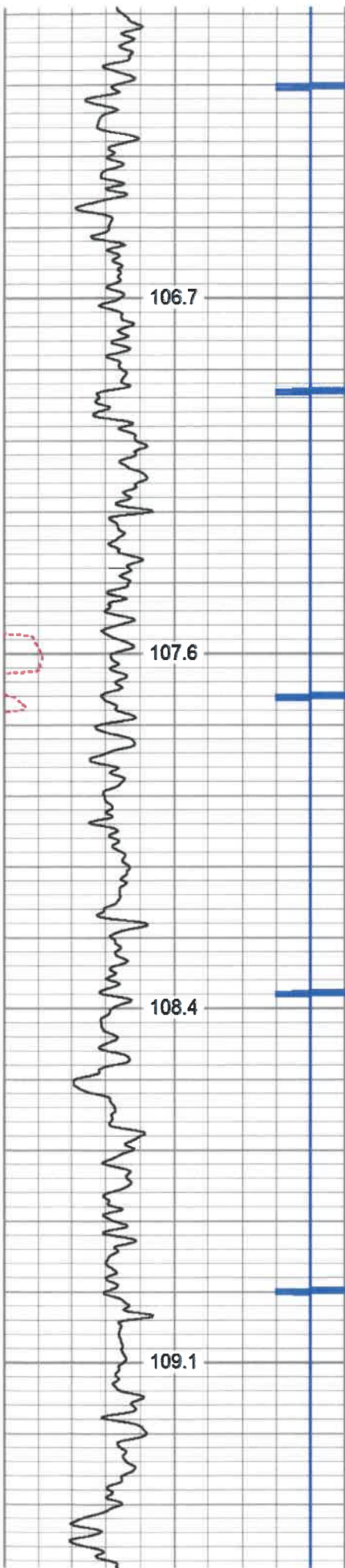
4600

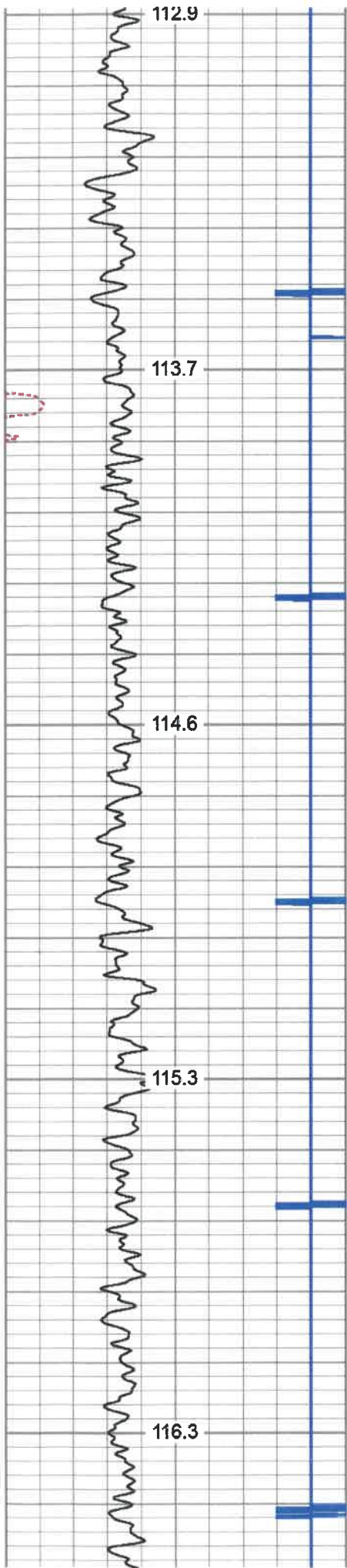
4650

4700

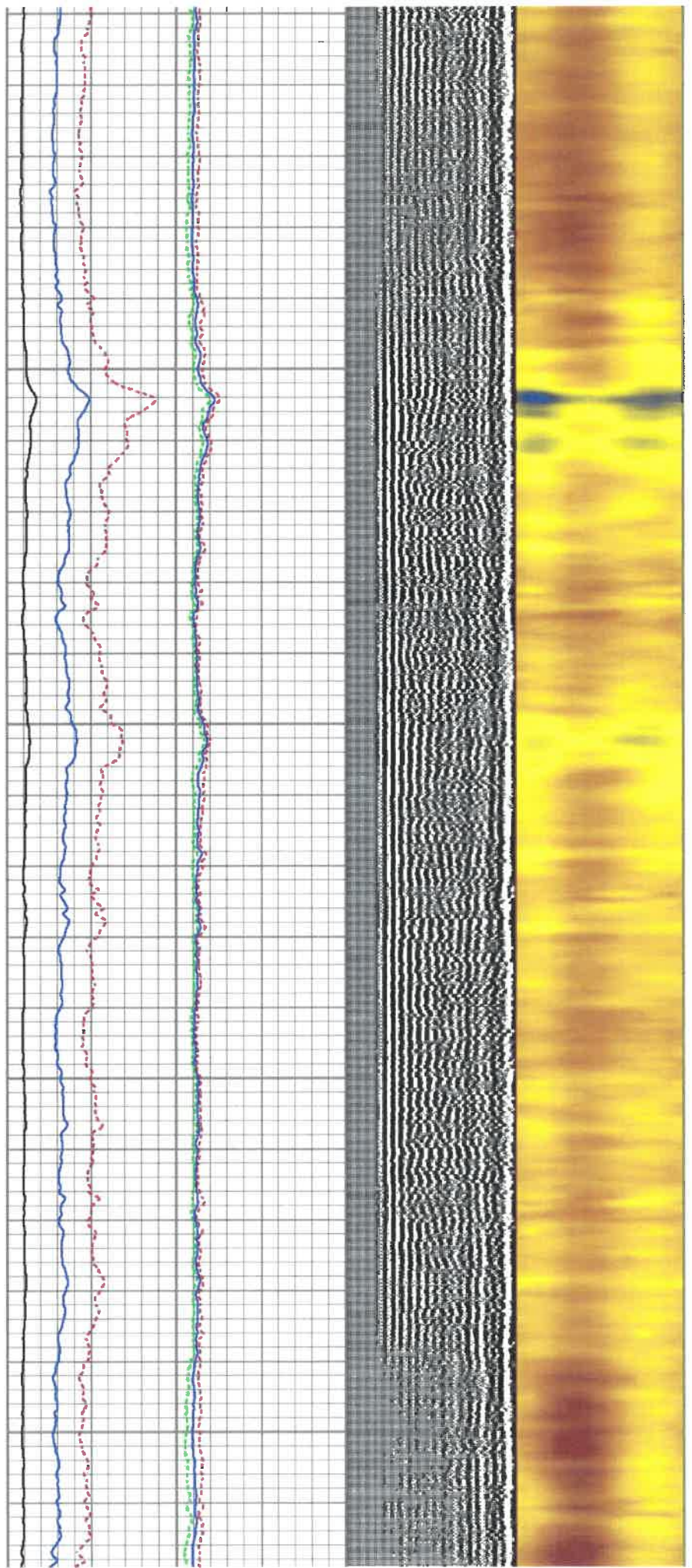
4750

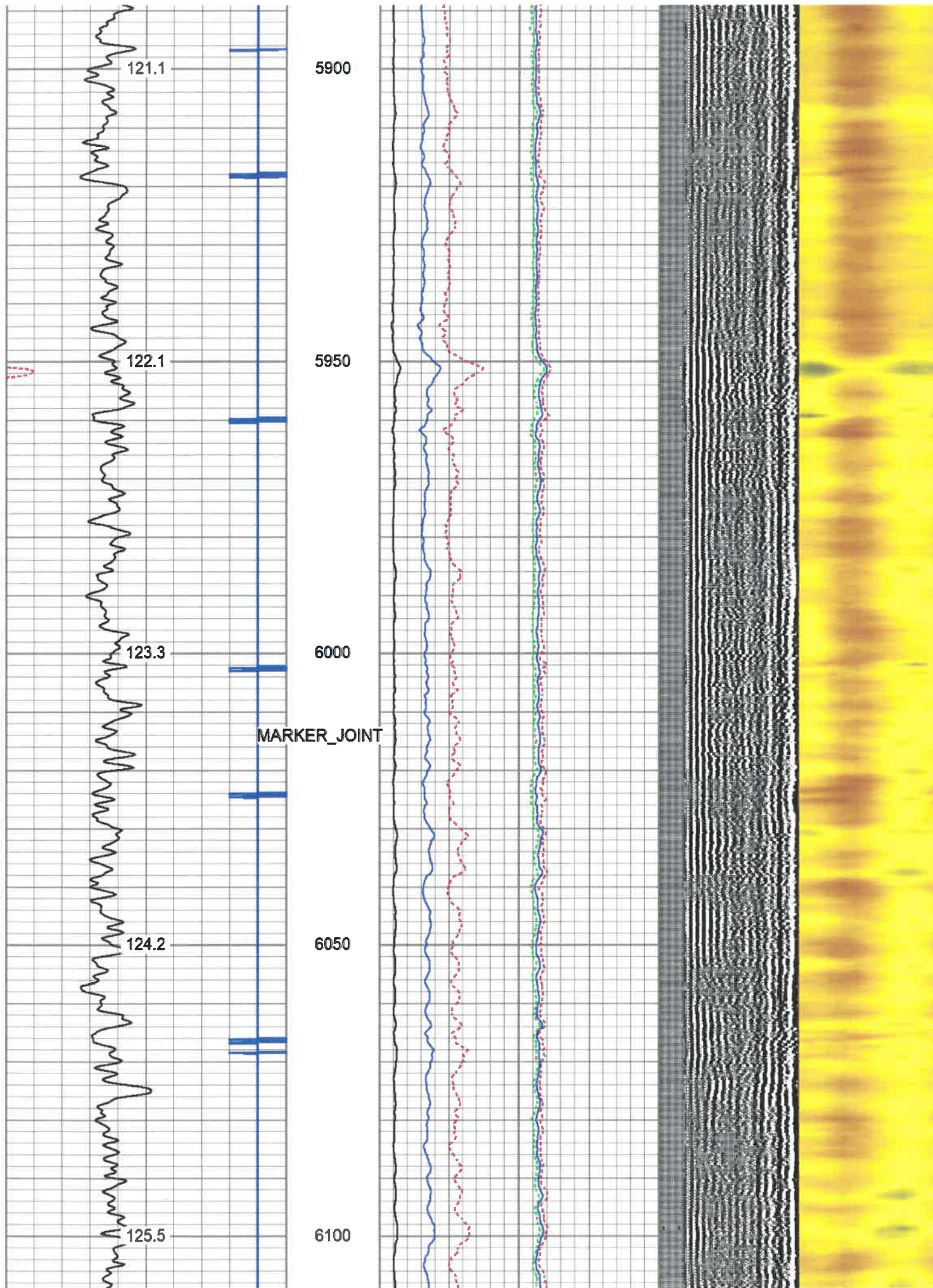


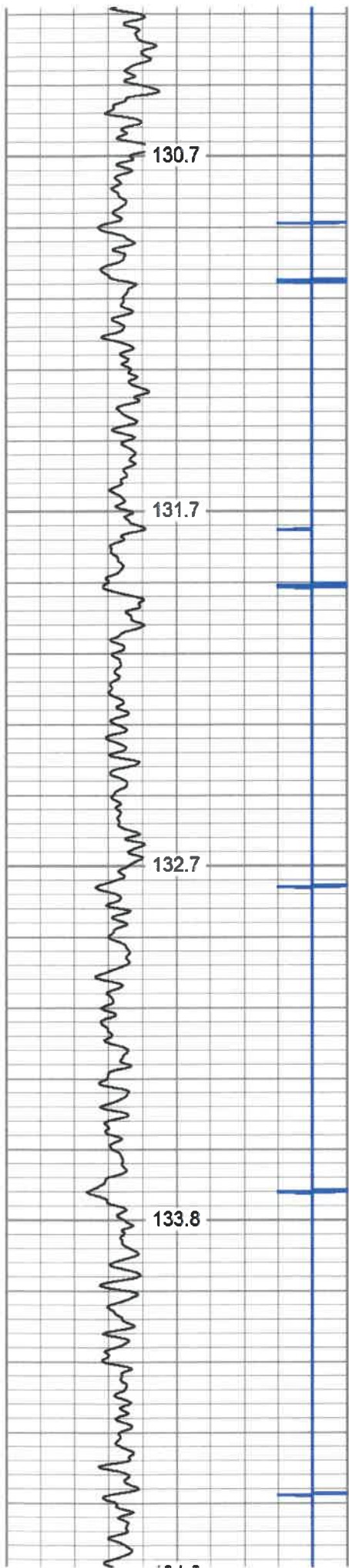




5450
5500
5550
5600
5650





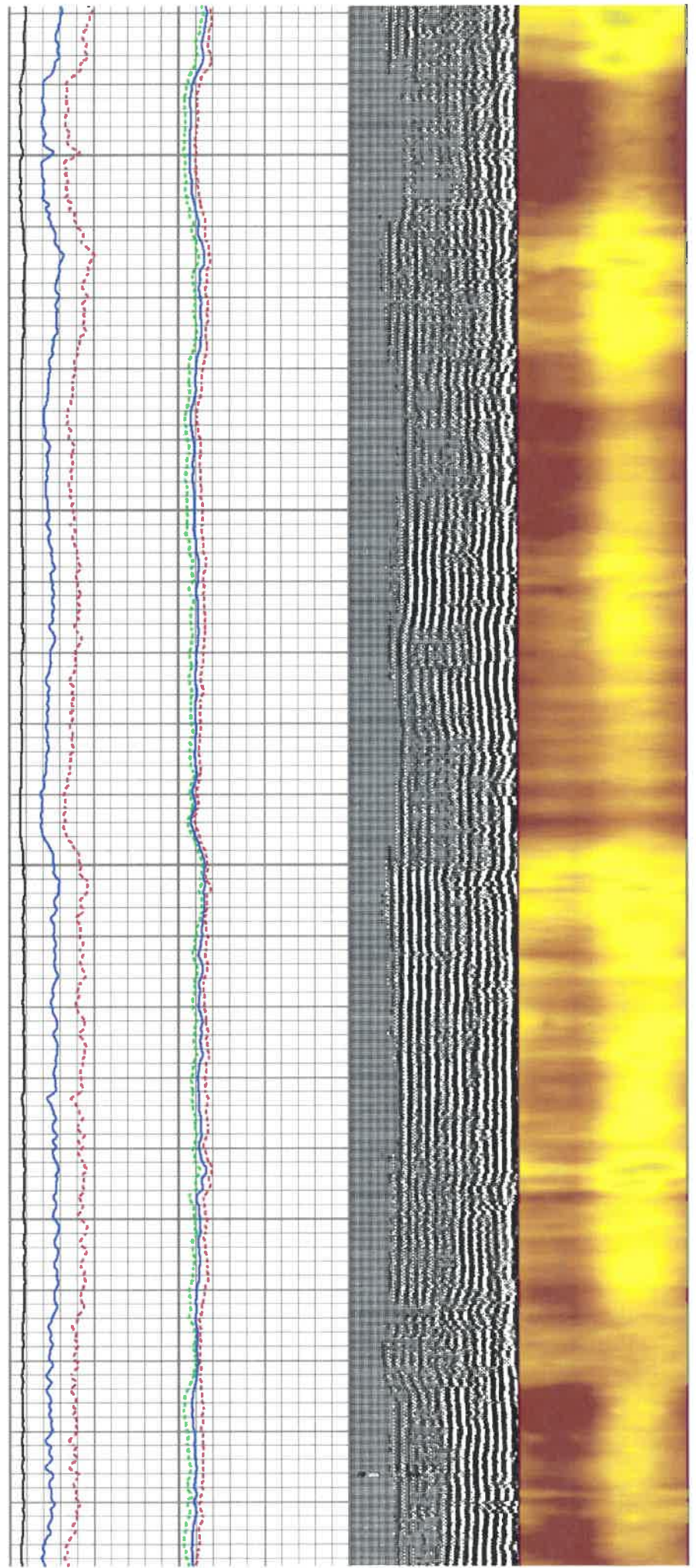


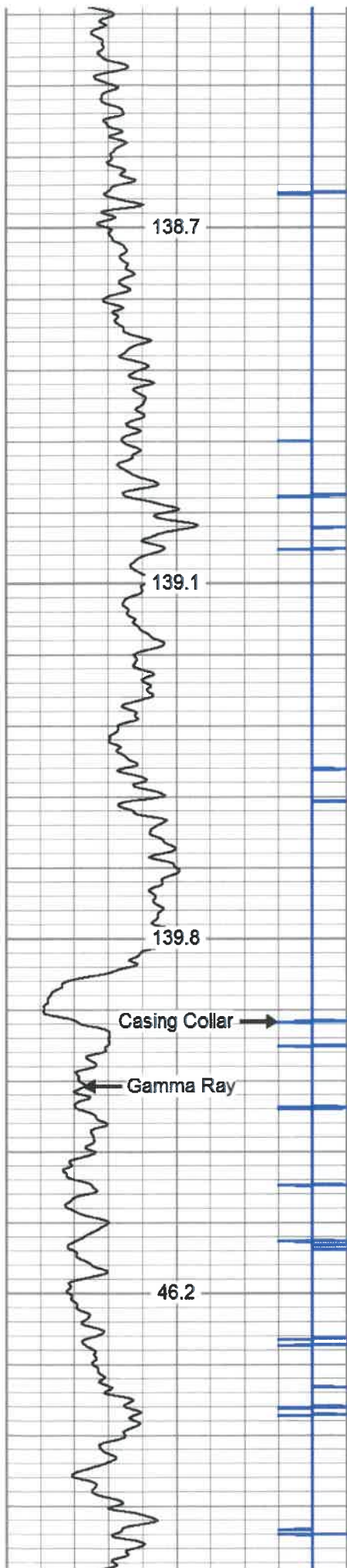
6350

6400

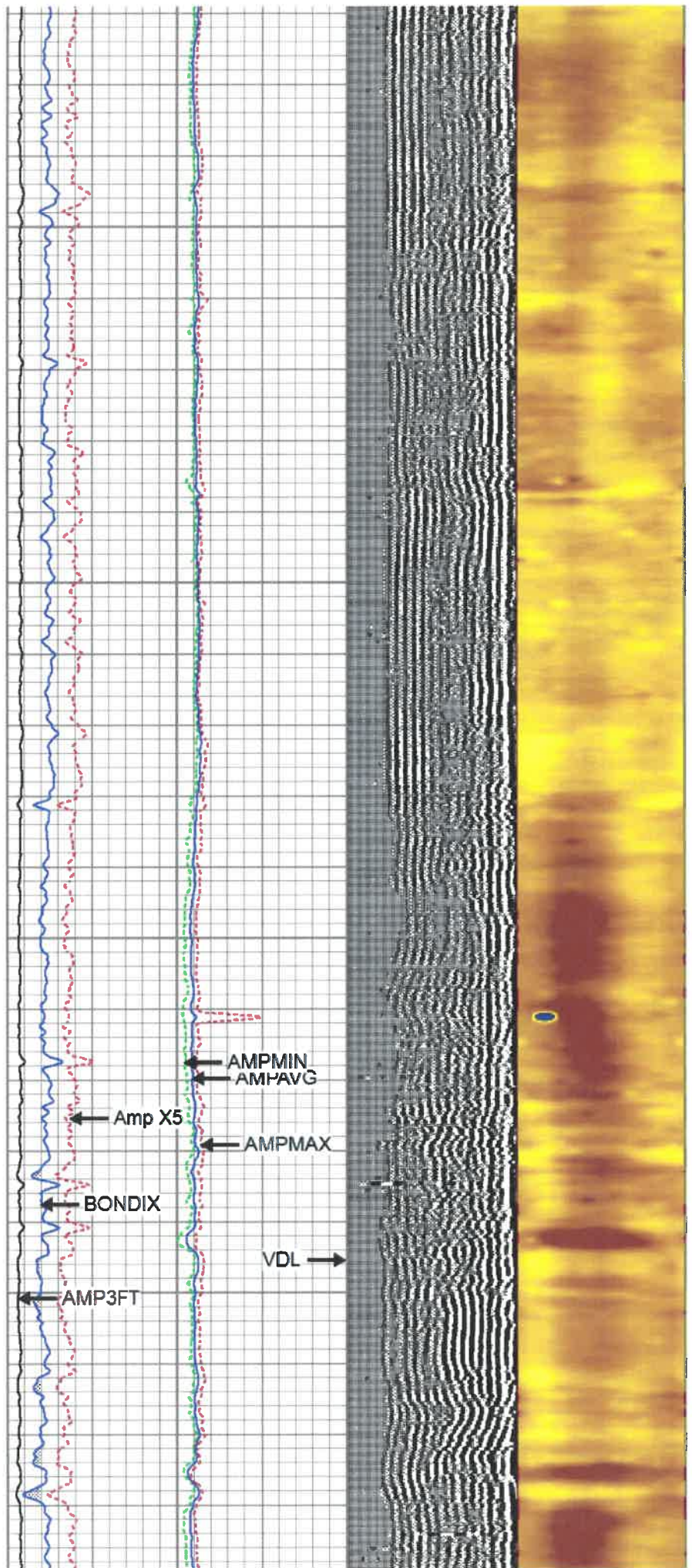
6450

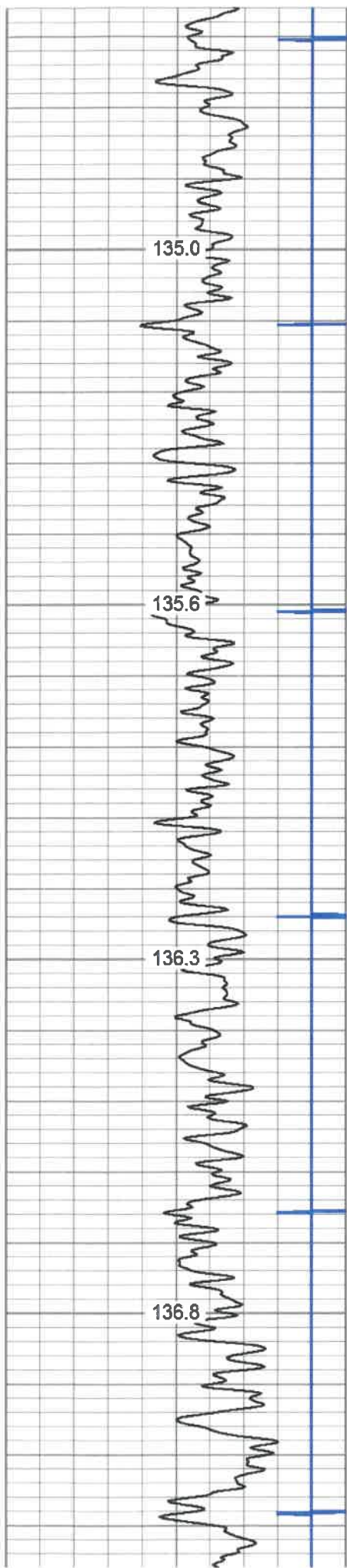
6500





6800
6850
6900
6950



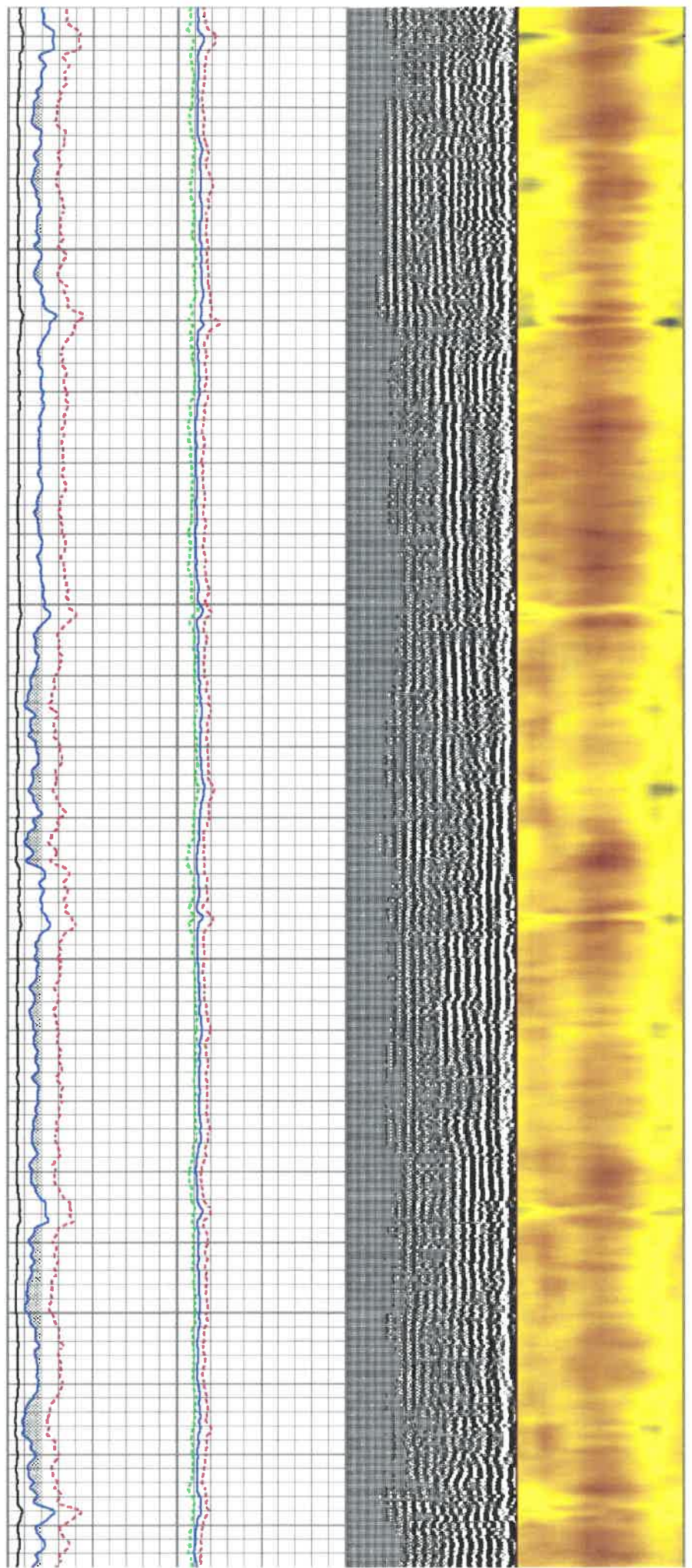


7000

7050

7100

7150



Dataset Pathname pass3.2
 Dataset Creation Fri Aug 30 15:06:19 2019

Gamma Ray Calibration Report

Serial Number: 0111
 Tool Model: Tek-Co 2 3/4
 Performed: Fri Aug 02 20:12:43 2019

Calibrator Value: 1.0 GAPI

Background Reading: 0.0 cps
 Calibrator Reading: 1.0 cps

Sensitivity: 0.3000 GAPI/cps

Segmented Cement Bond Log Calibration Report

Serial Number: T12_01
 Tool Model: Tek12

Calibration Casing Diameter: 5.500 in
 Calibration Depth: 28.925 ft


Master Calibration, performed (Derived):

	Raw (v)		Calibrated (mv)		Results	
	Zero	Cal	Zero	Cal	Gain	Offset
3'	0.000	0.615	3.500	71.921	92.339	3.500
CAL	0.000	0.440				
5'	-0.096	0.800	1.000	71.921	79.190	8.572
SUM						
S1	0.000	1.805	0.000	100.000	55.403	-0.002
S2	0.000	1.661	0.000	100.000	60.196	-0.002
S3	0.000	1.628	0.000	100.000	61.419	-0.002
S4	0.000	1.703	0.000	100.000	58.719	-0.001
S5	0.000	1.876	0.000	100.000	53.316	-0.001
S6	0.000	1.969	0.000	100.000	50.776	-0.001
S7	0.000	2.005	0.000	100.000	49.888	-0.001
S8	0.000	1.899	0.000	100.000	52.657	-0.001
S9	0.000	1.824	0.000	100.000	54.819	-0.002
S10	0.000	1.656	0.000	100.000	60.380	-0.002
S11	0.000	1.745	0.000	100.000	57.305	-0.002
S12	0.000	1.821	0.000	100.000	54.912	-0.002

Temperature Calibration Report

Serial Number: T12_01
 Tool Model: Tek12
 Performed: Fri Oct 22 17:21:06 2010

	Reference	Reading
Low Reference:	0.00 degF	0.00 usec
High Reference:	1.00 degF	1.00 usec
Gain:	0.33	
Offset:	0.00	
Delta Spacing:	2	

Sensor	Offset (ft)	Schematic	Description	Length (ft)	O.D. (in)	Weight (lb)
			Titan-1.4375 1 7/16 Titan Type II Cable Head	1.03	1.44	5.00



Field	MARCELLUS
County	DODDRIDGE
State	WV

Country USA