



RADIAL BOND LOG
GAMMA RAY
VDL,CCL

Company ANTERO RESOURCES CORPORATION
 Well OXFORD 97 CHS
 Field MARCELLUS
 County DODDRIDGE
 State WV

Company ANTERO RESOURCES CORPORATION
 Well OXFORD 97 CHS
 Field MARCELLUS
 County DODDRIDGE State WV

Location: AFE A06740
 API #: 47017064830000
 Other Services

Permanent Datum SEC TWP RGE Elevation
 Log Measured From
 Drilling Measured From

Elevation
 K.B.
 D.F.
 G.L.

Date	8-30-19						
Run Number	1						
Depth Driller	16742'						
Depth Logger	7239'						
Bottom Logged Interval	7239'						
Top Log Interval	SURFACE						
Open Hole Size	N/A						
Type Fluid	WATER						
Density / Viscosity	N/A						
Max. Recorded Temp.	140.8 DEG						
Estimated Cement Top	SURFACE						
Time Well Ready	N/A						
Time Logger on Bottom	8:12						
Equipment Number	624874						
Location	BRIDGEPORT						
Recorded By	P DAVIDSON						
Witnessed By	D GANDEE						
Borehole Record							
Run Number	Bit	From	To	Size	Weight	From	To
				5.5	23	16725'	0
Casing Record							

<<< Fold Here >>>

All interpretations are opinions based on inferences from electrical or other measurements and we cannot and do not guarantee the accuracy or correctness of any interpretation, and we shall not, except in the case of gross or willful negligence on our part, be liable or responsible for any loss, costs, damages, or expenses incurred or sustained by anyone resulting from any interpretation made by any of our officers, agents or employees. These interpretations are also subject to our general terms and conditions set out in our current Price Schedule.

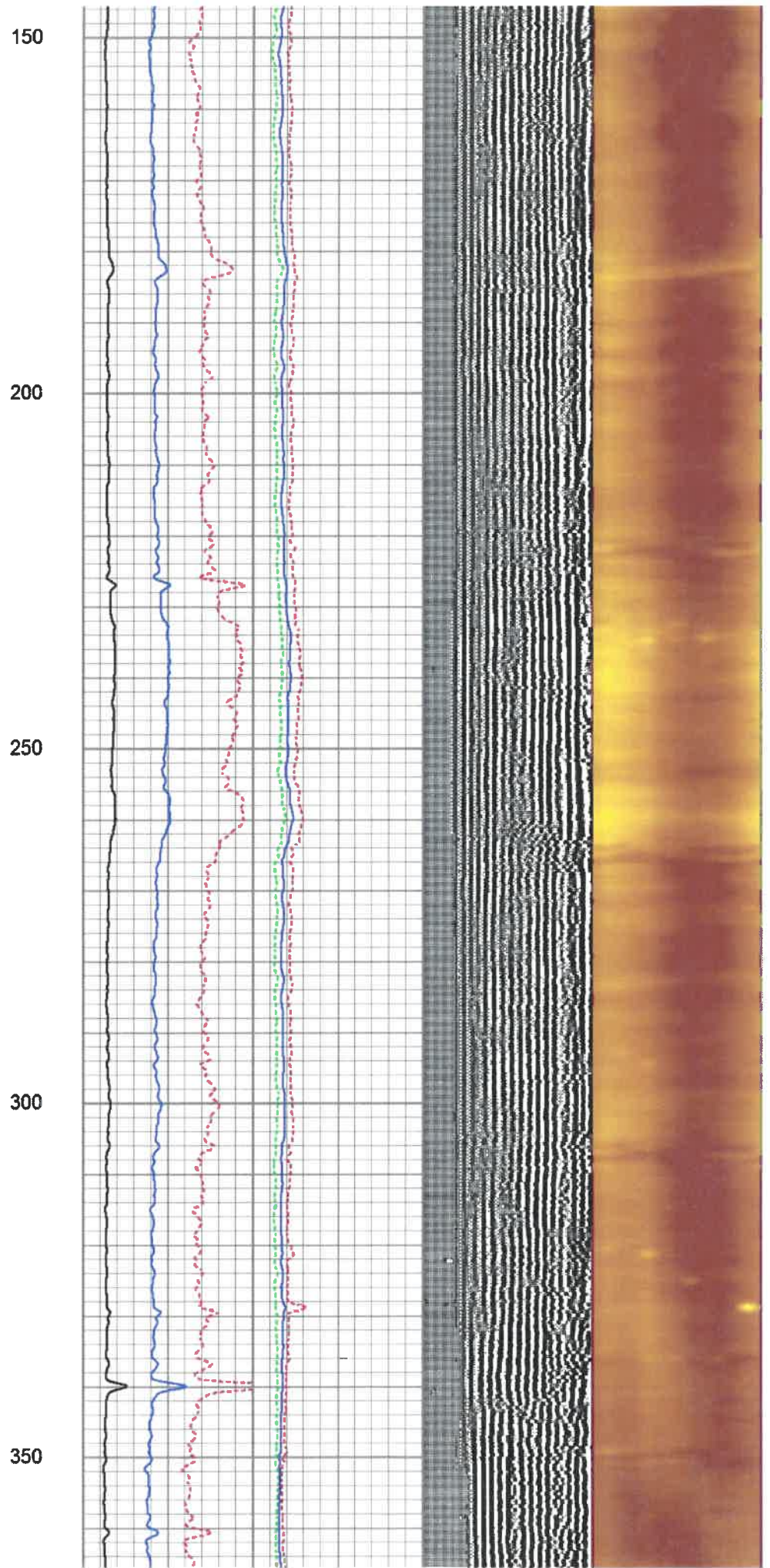
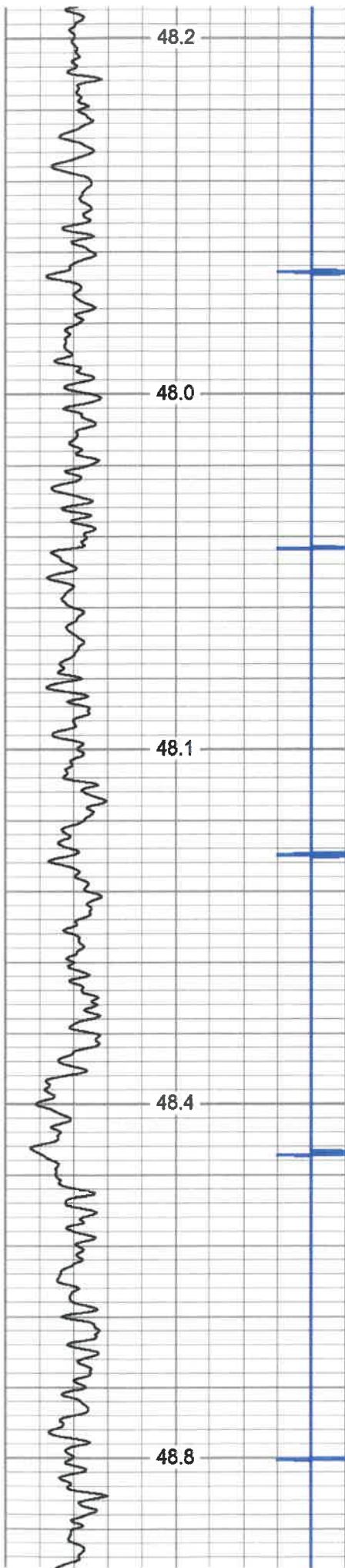
Comments

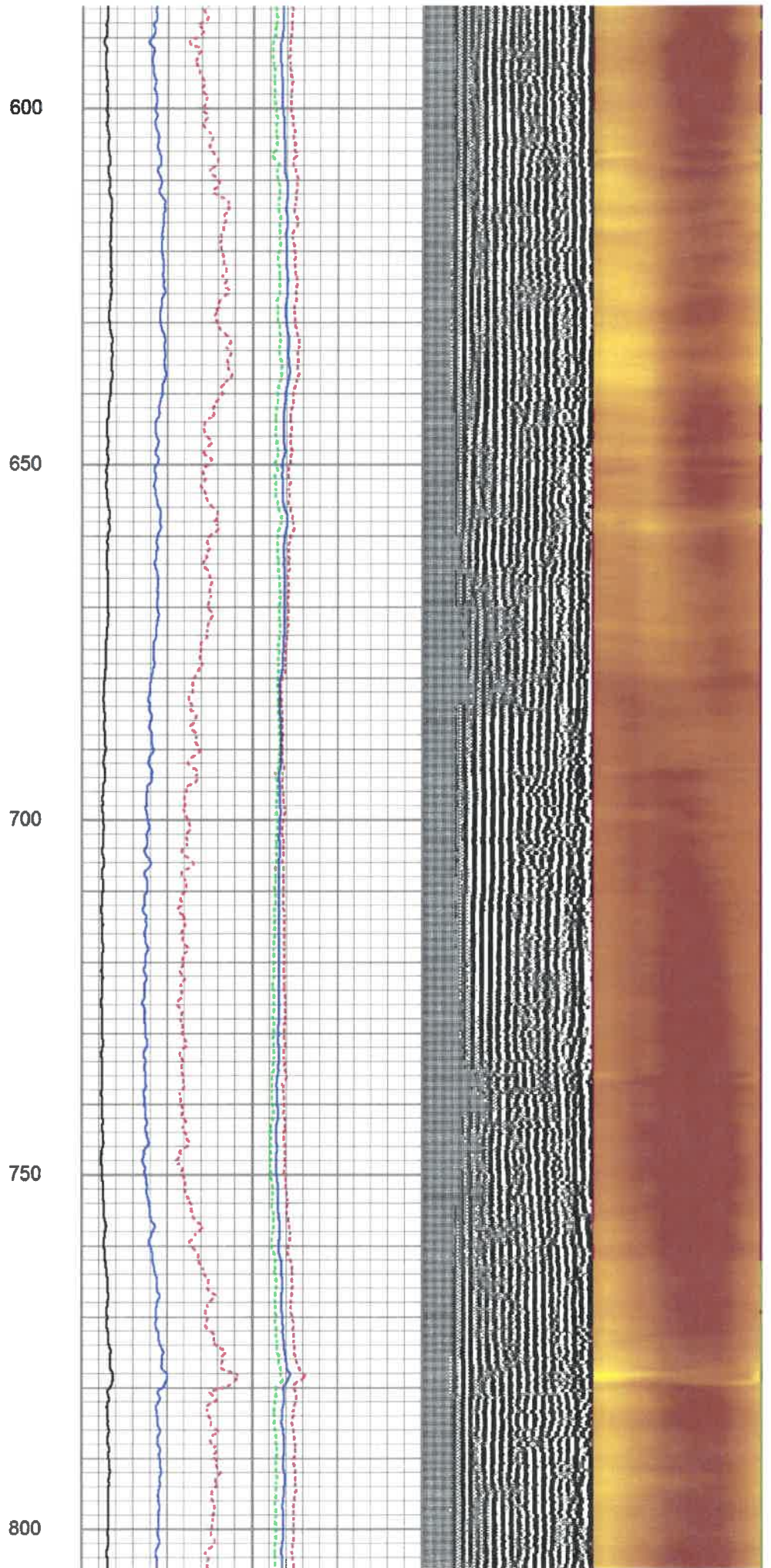
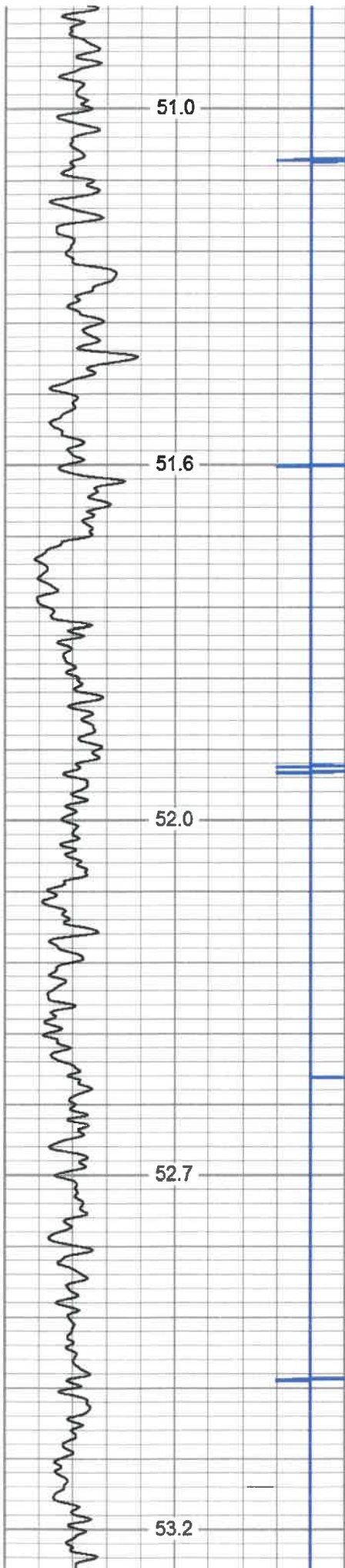
MARKER JOINT @6286-6306
 LOG TD 7239'
 CEMENT TOP @SURFACE
 LOGGED UNDER 1500 PSI.

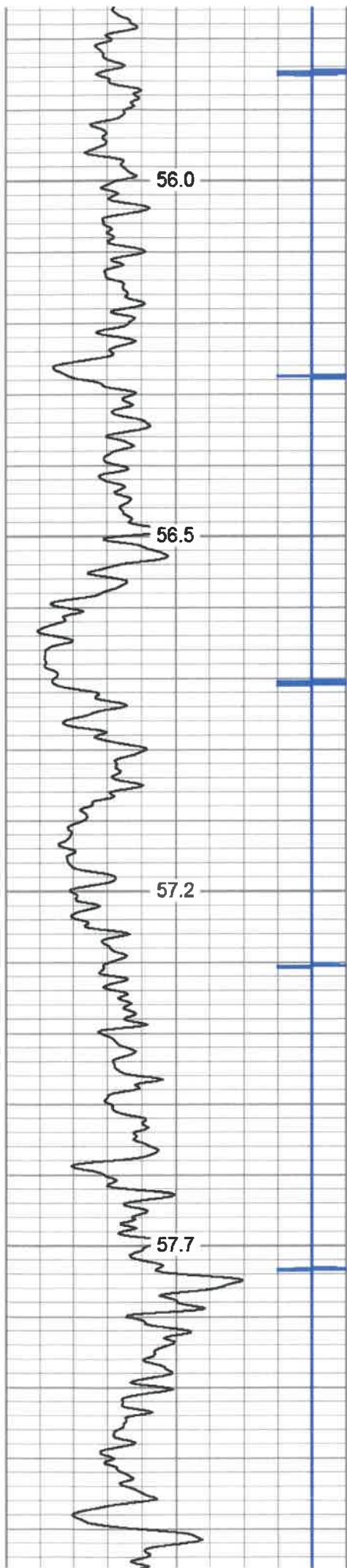
THANK YOU FOR CHOOSING KLX ENERGY



MAIN LOG 1500 PSI





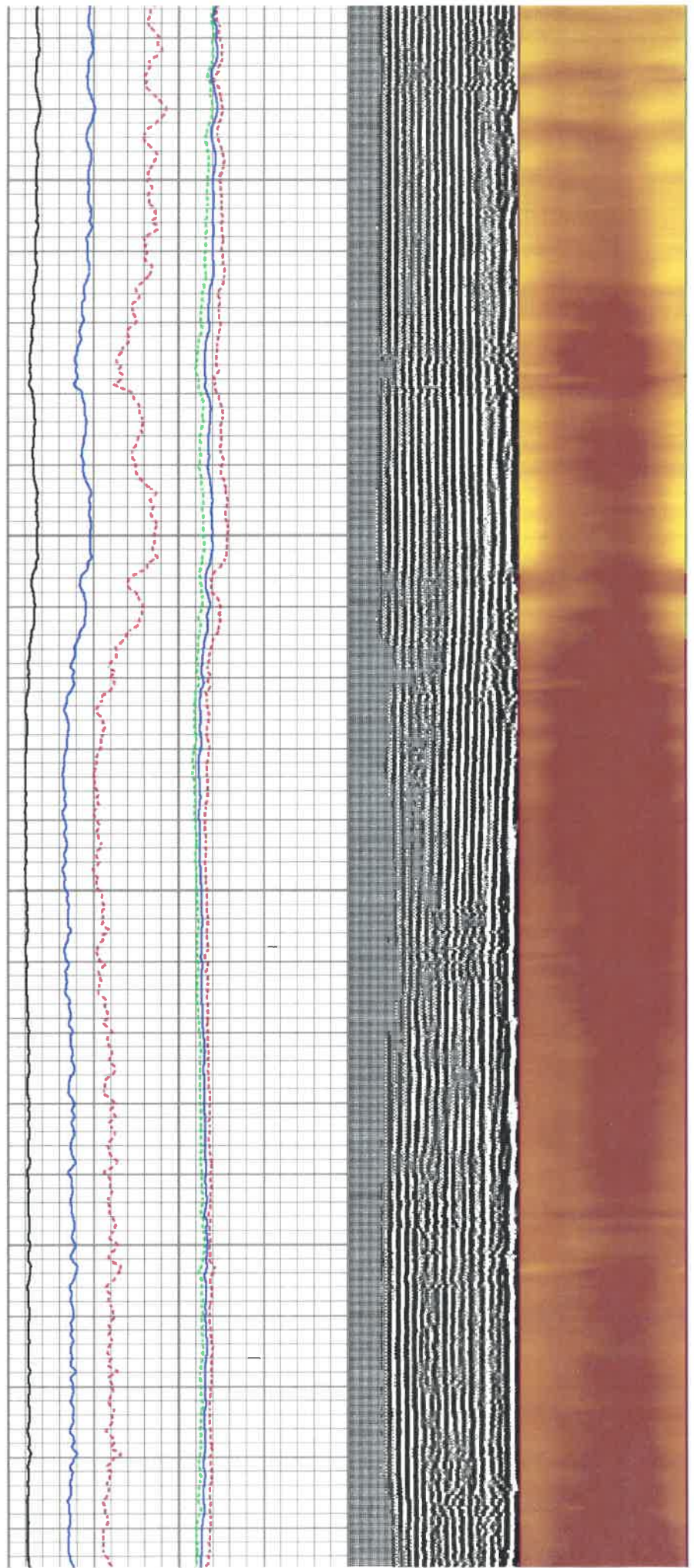


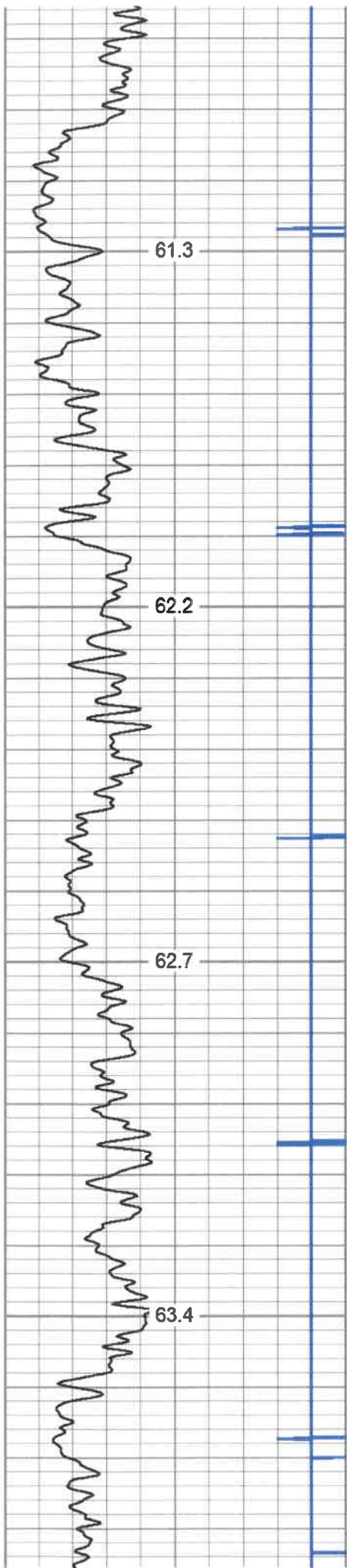
1050

1100

1150

1200



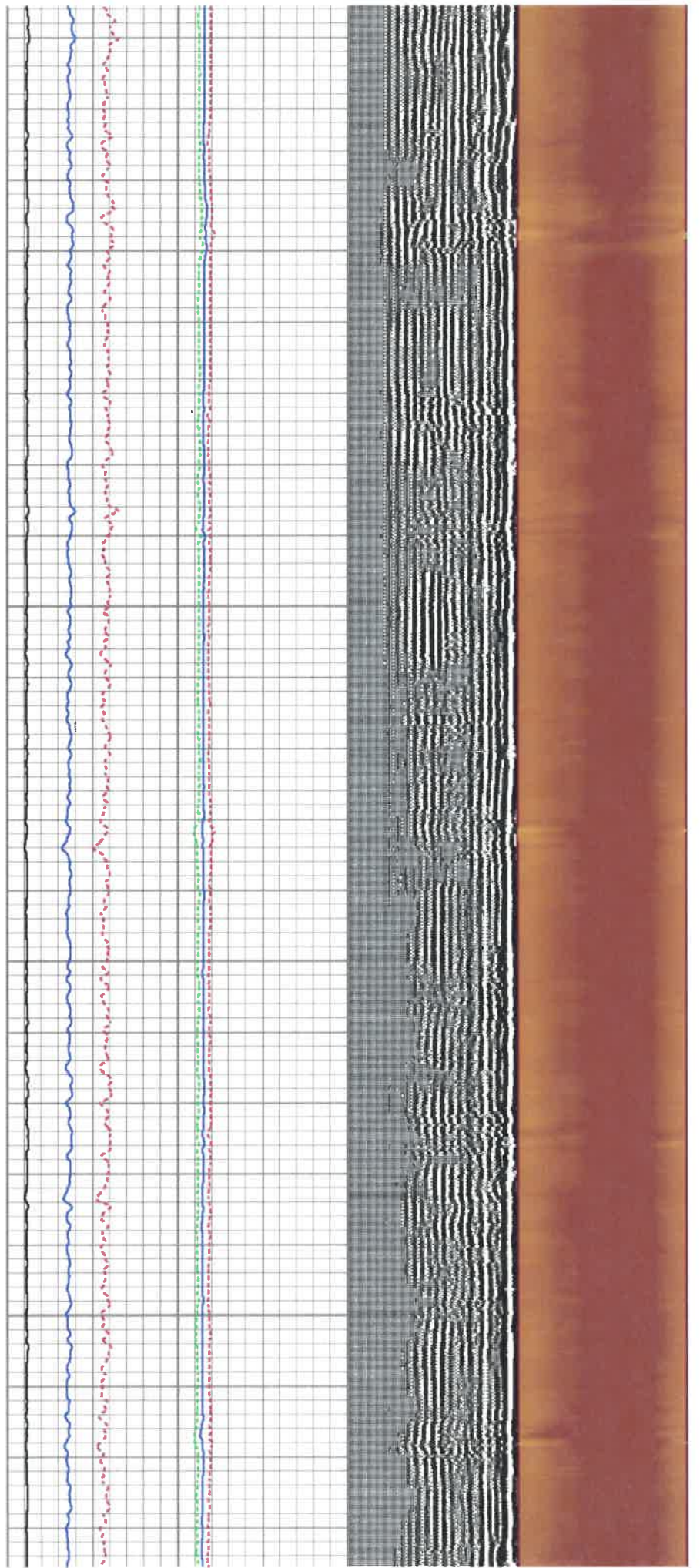


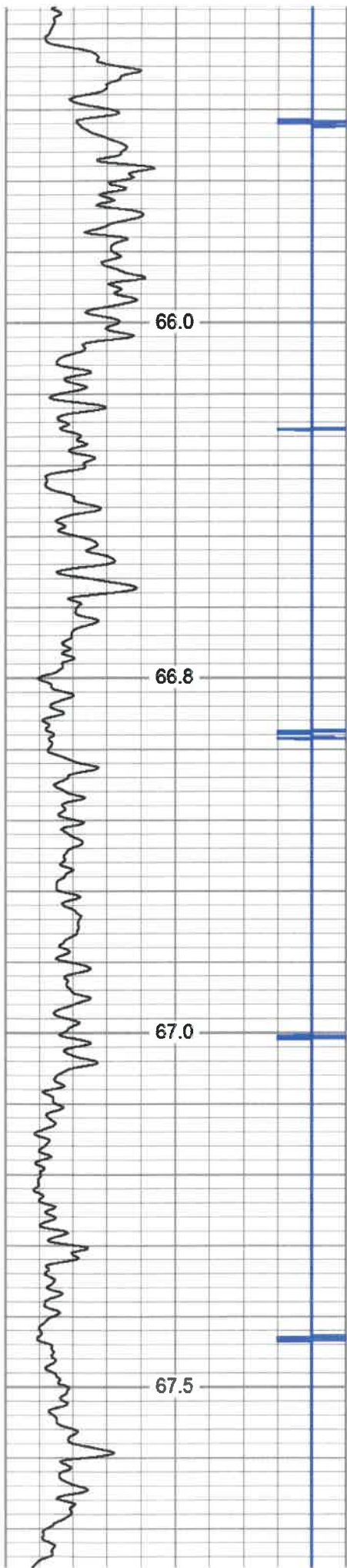
1500

1550

1600

1650



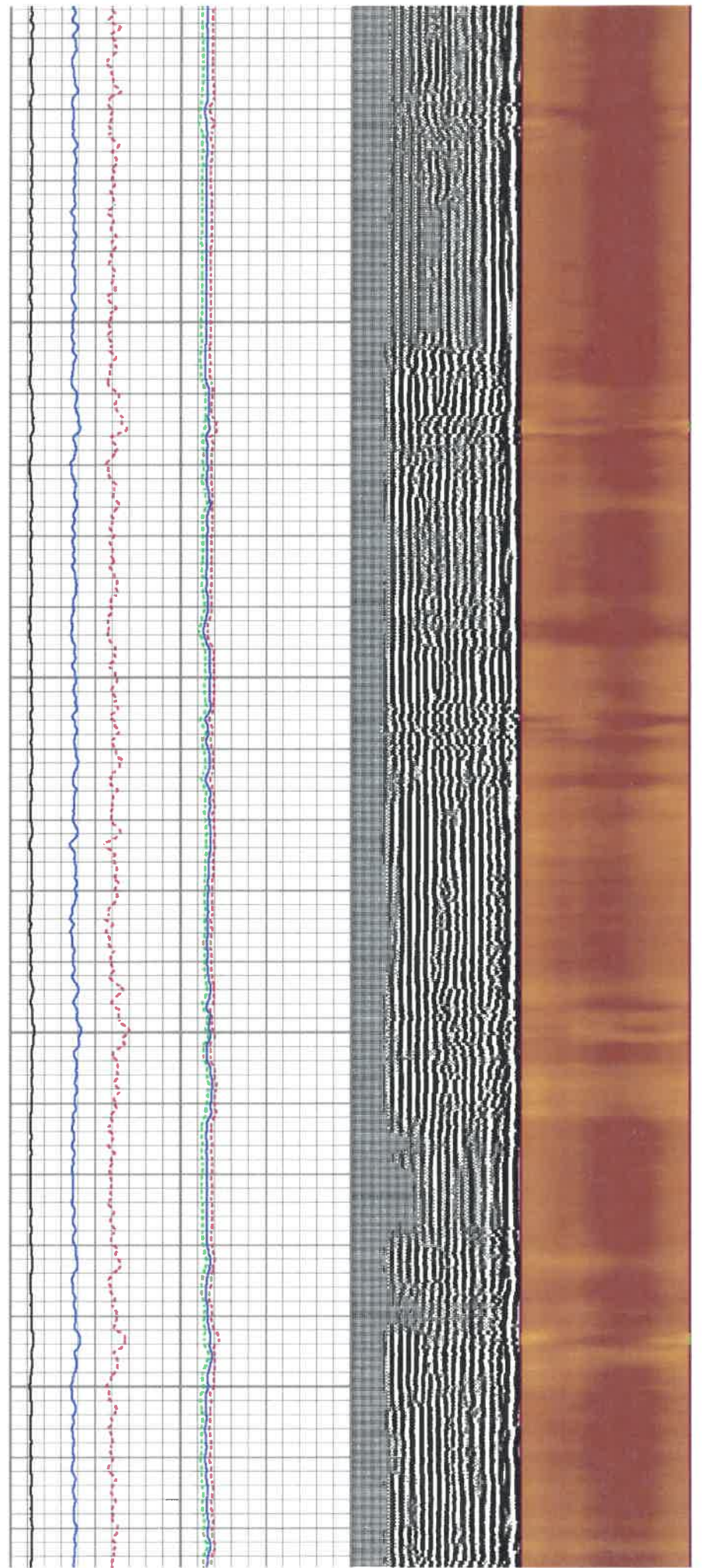


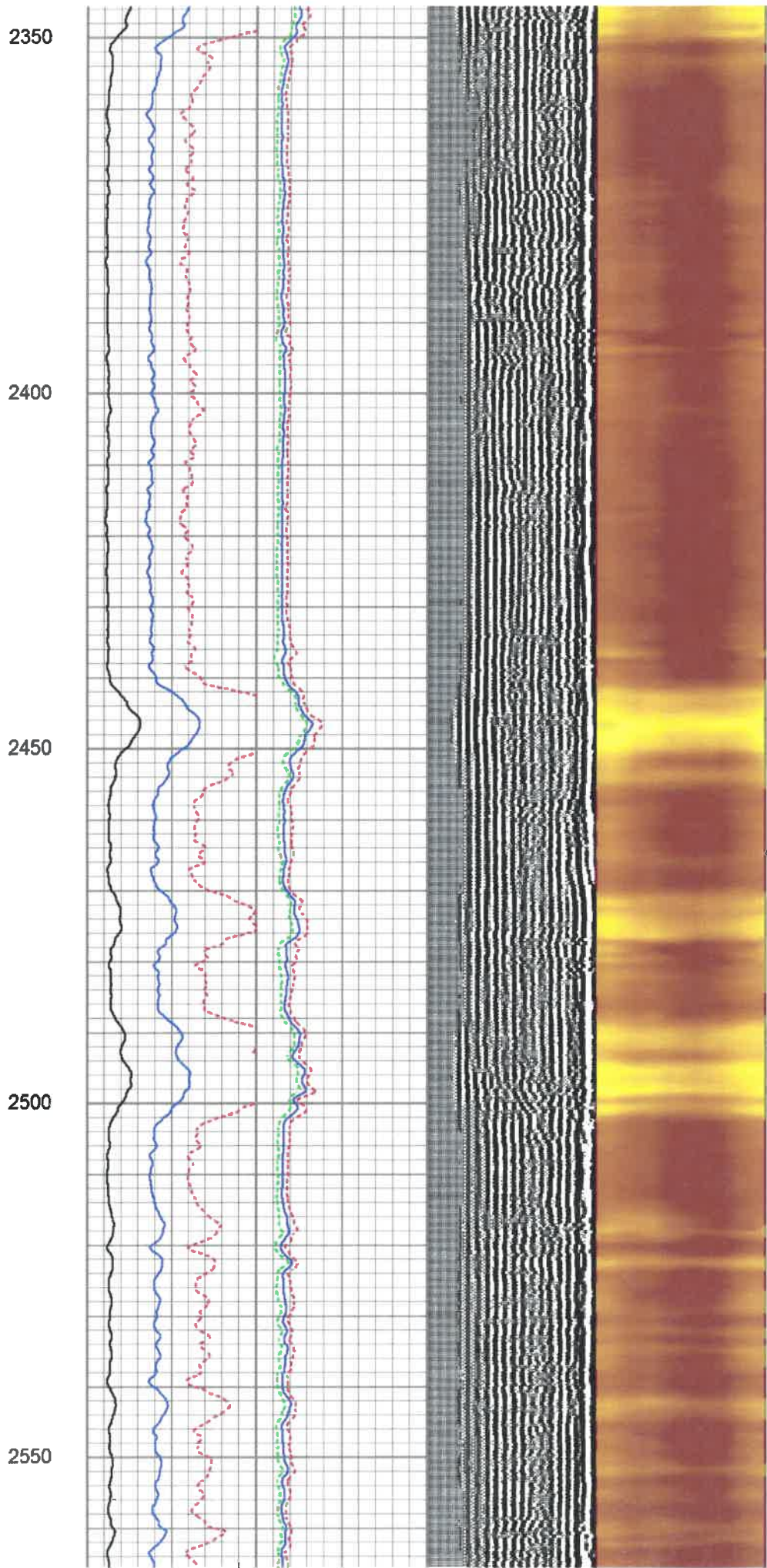
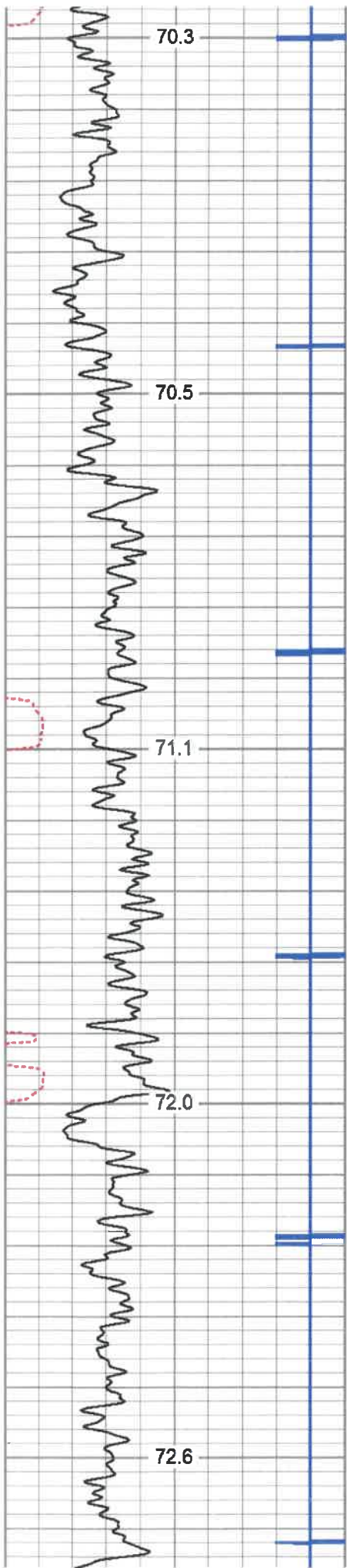
1950

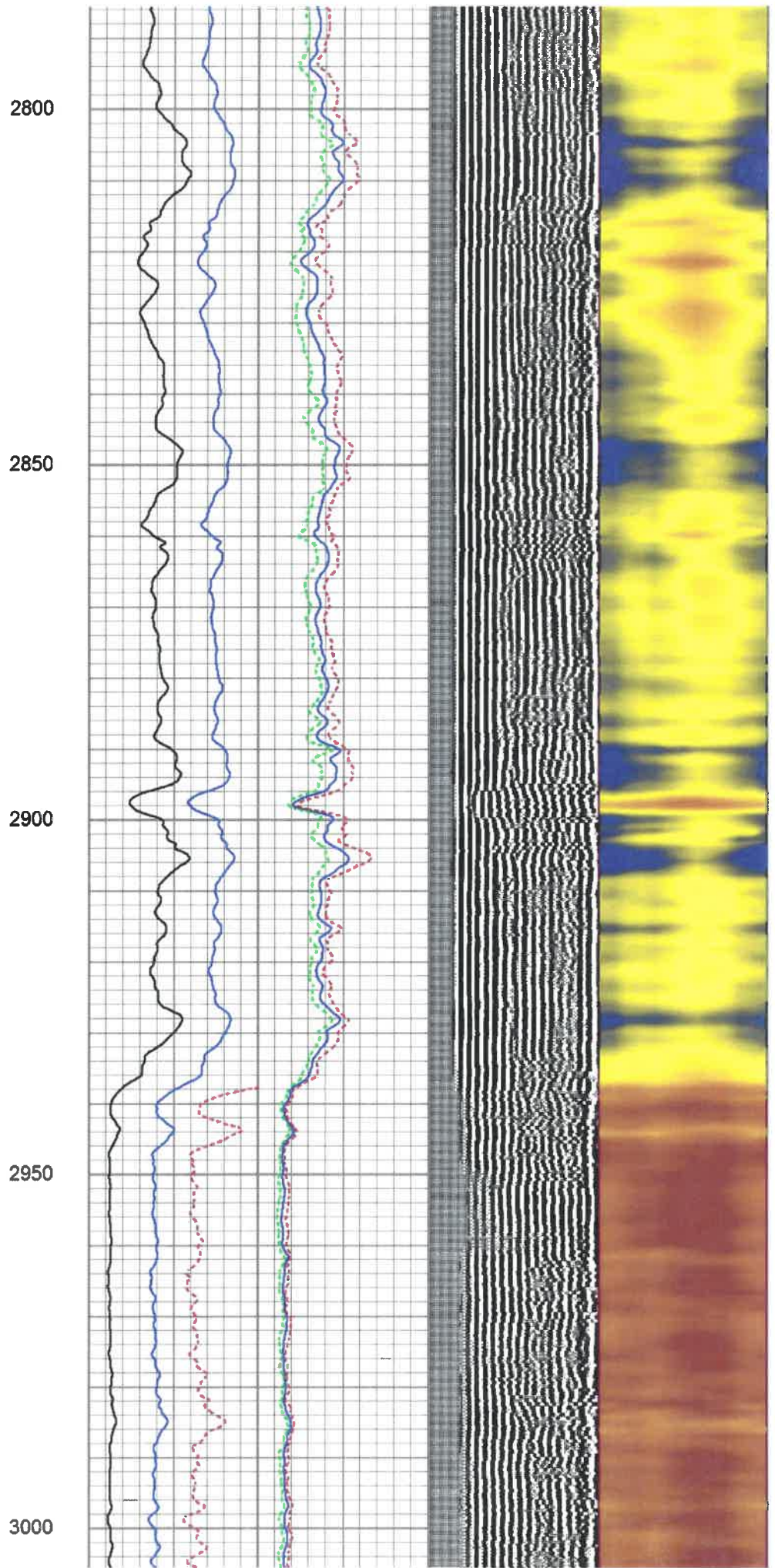
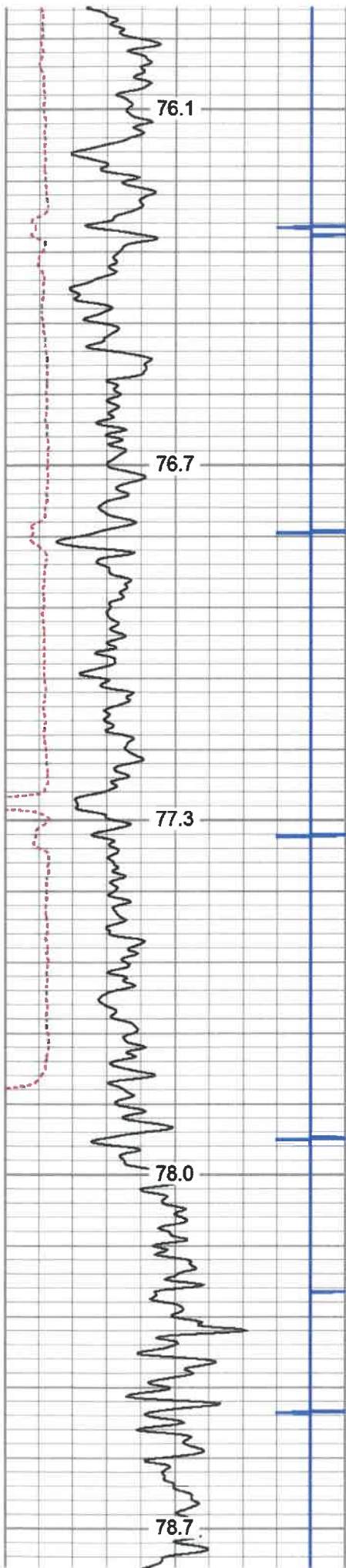
2000

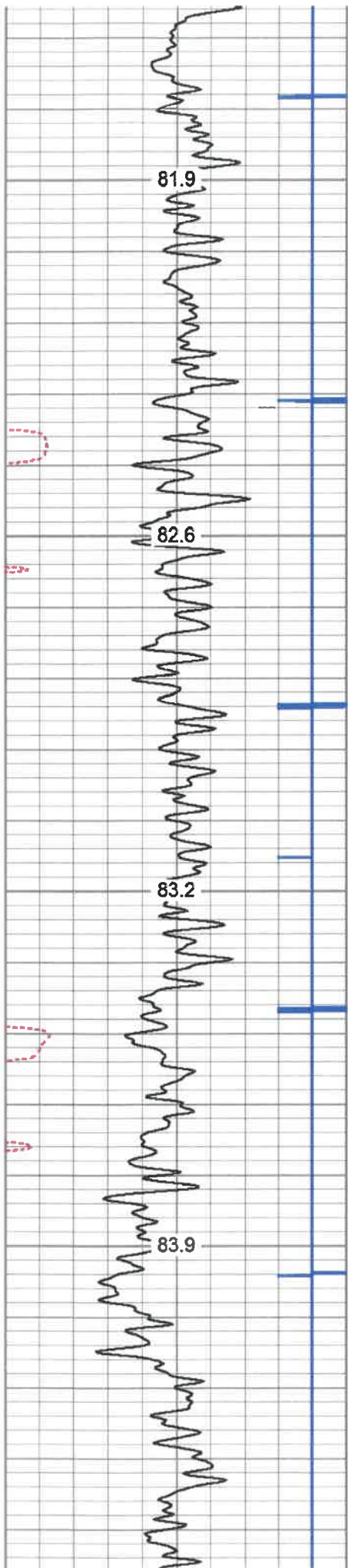
2050

2100







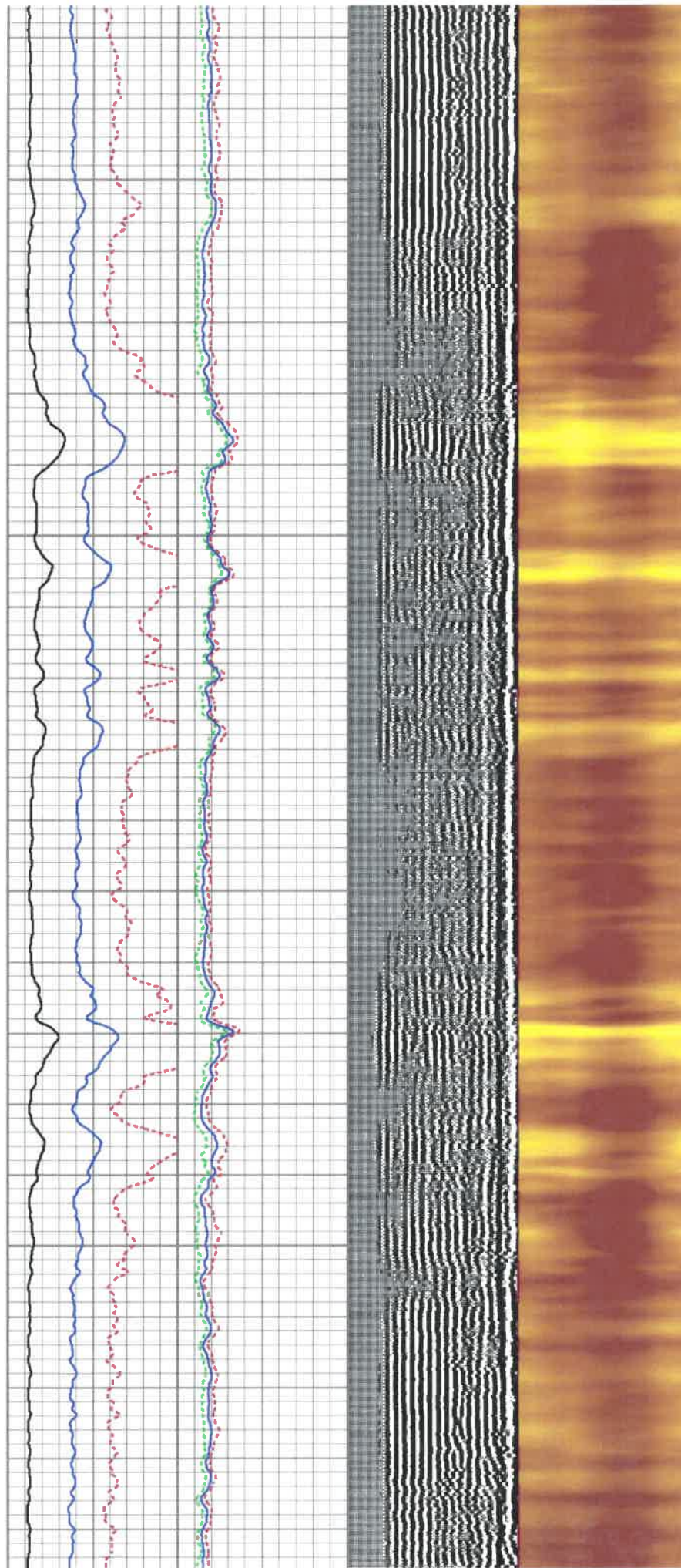


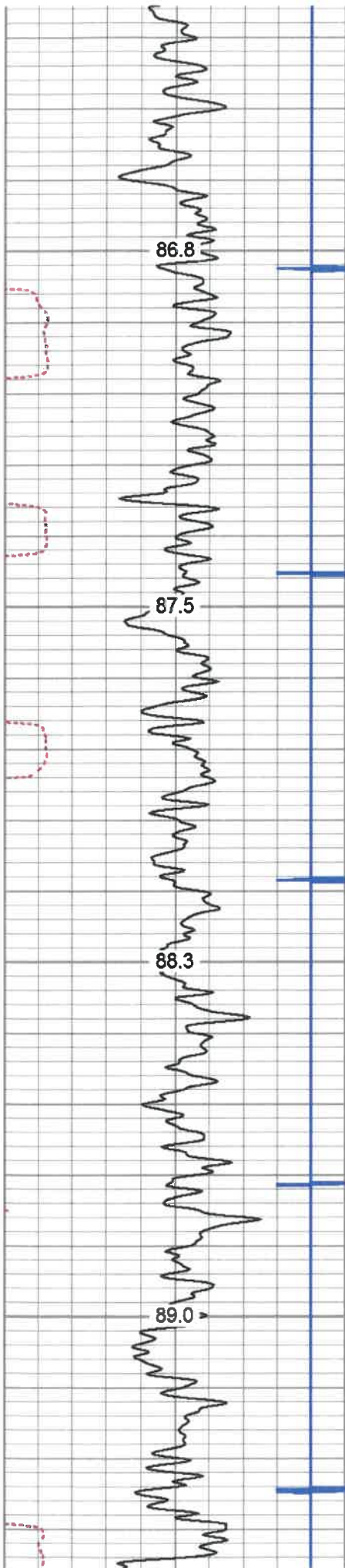
3250

3300

3350

3400



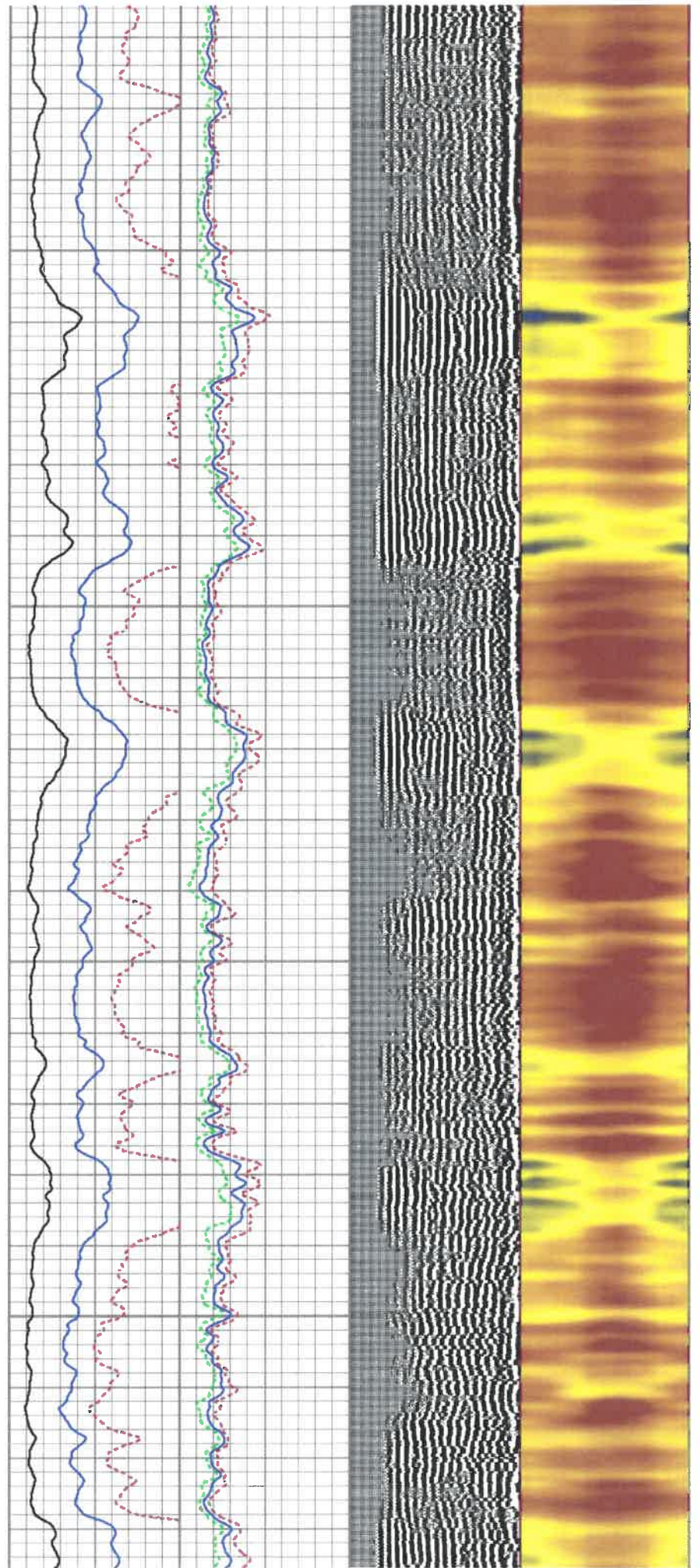


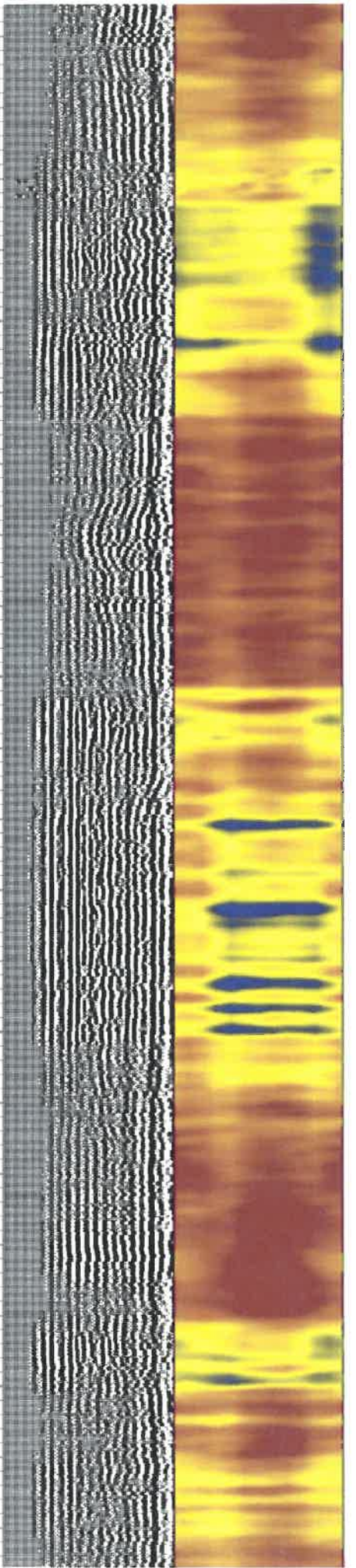
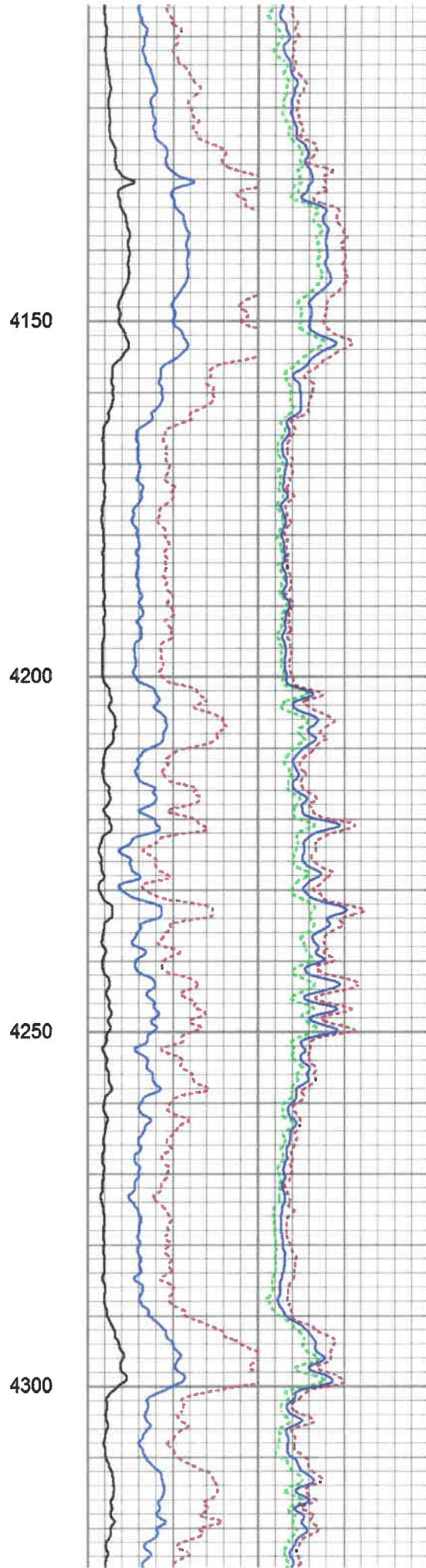
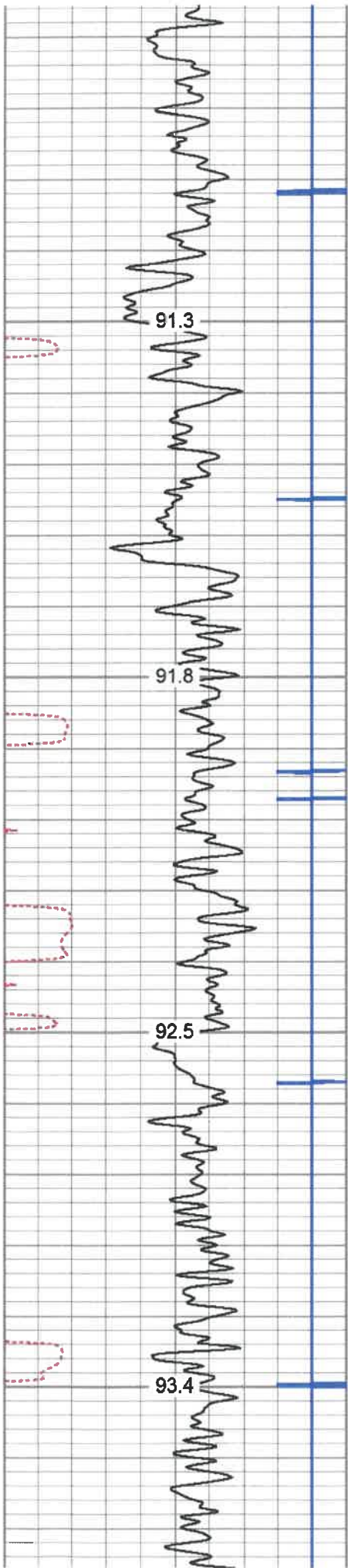
3700

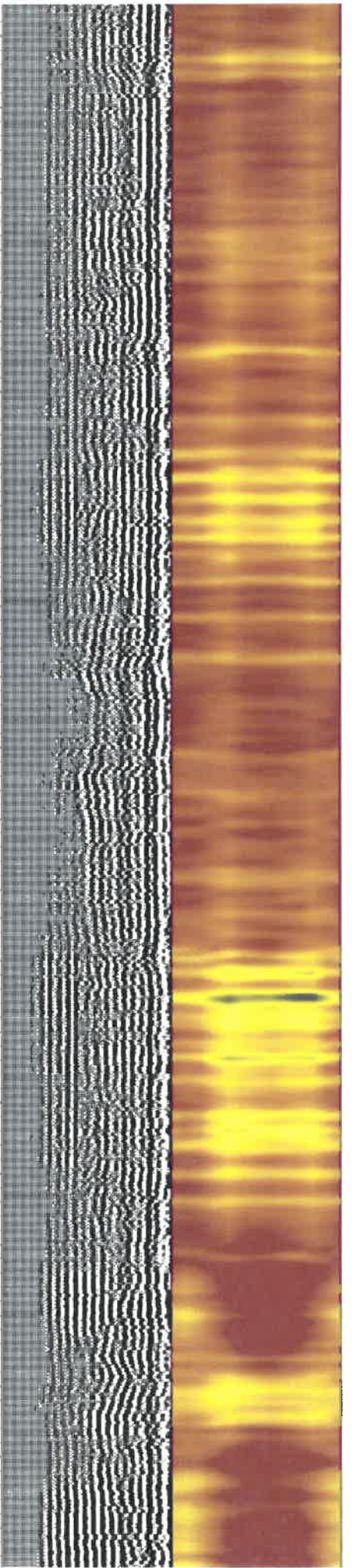
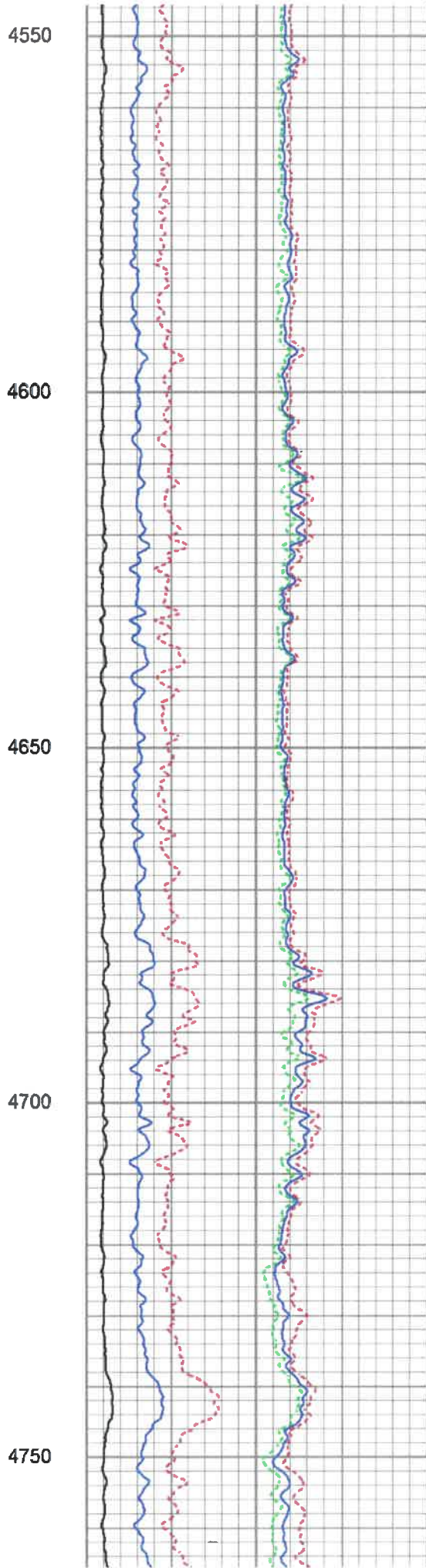
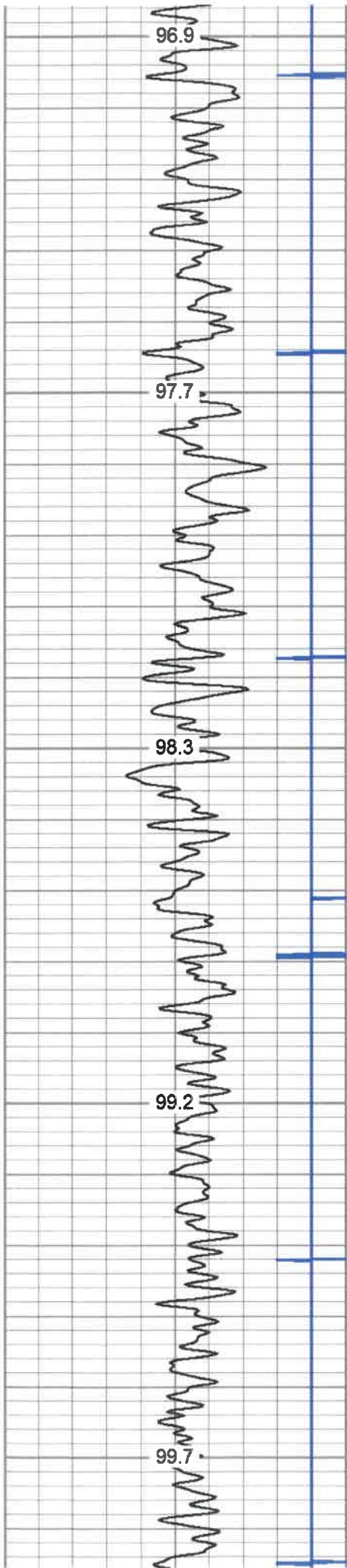
3750

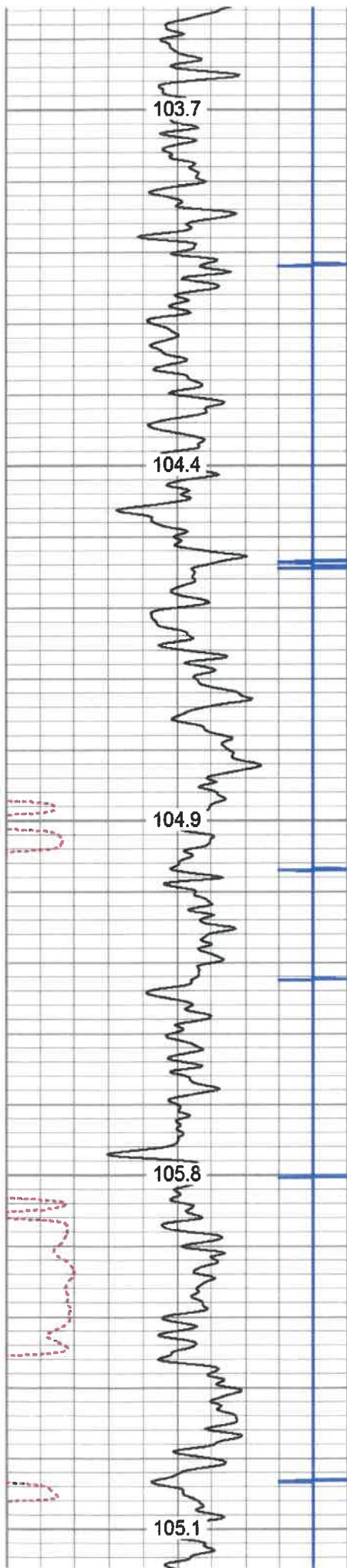
3800

3850









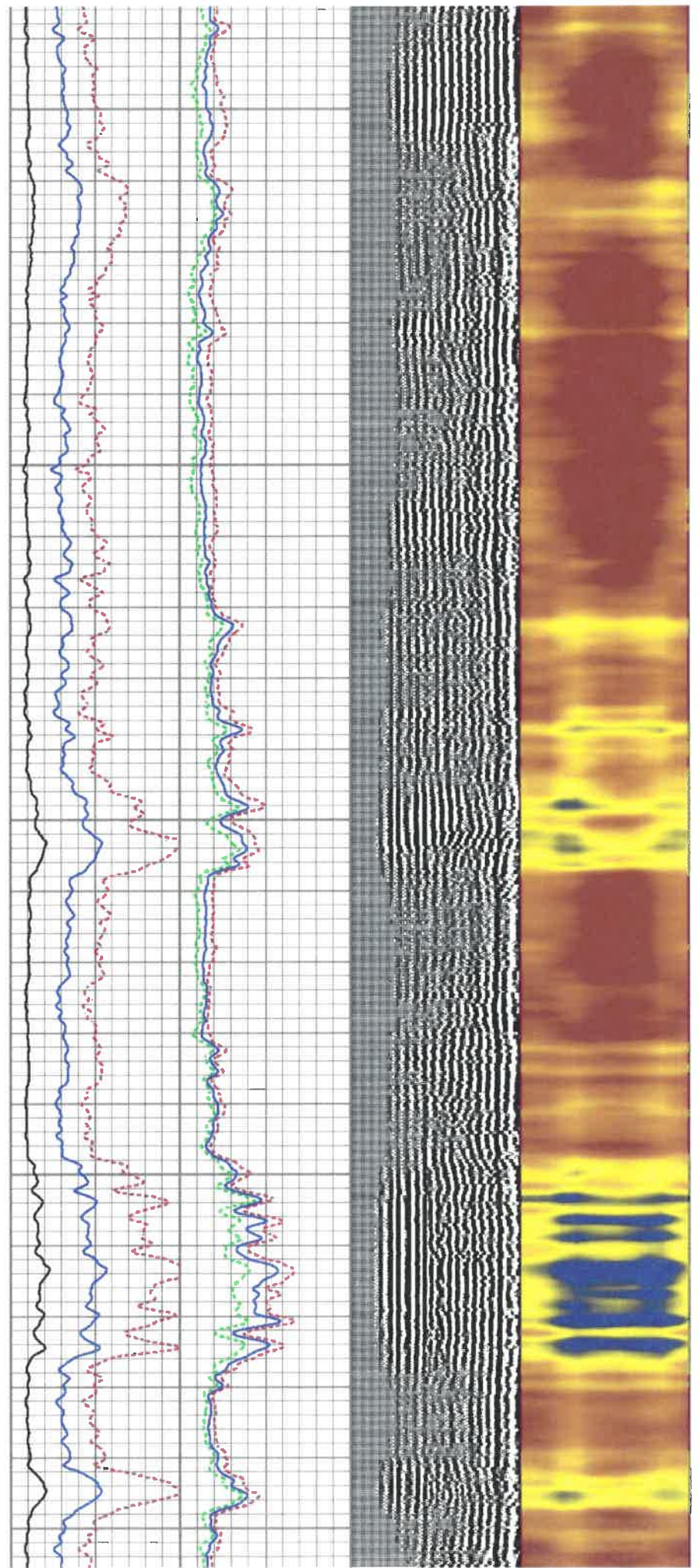
5000

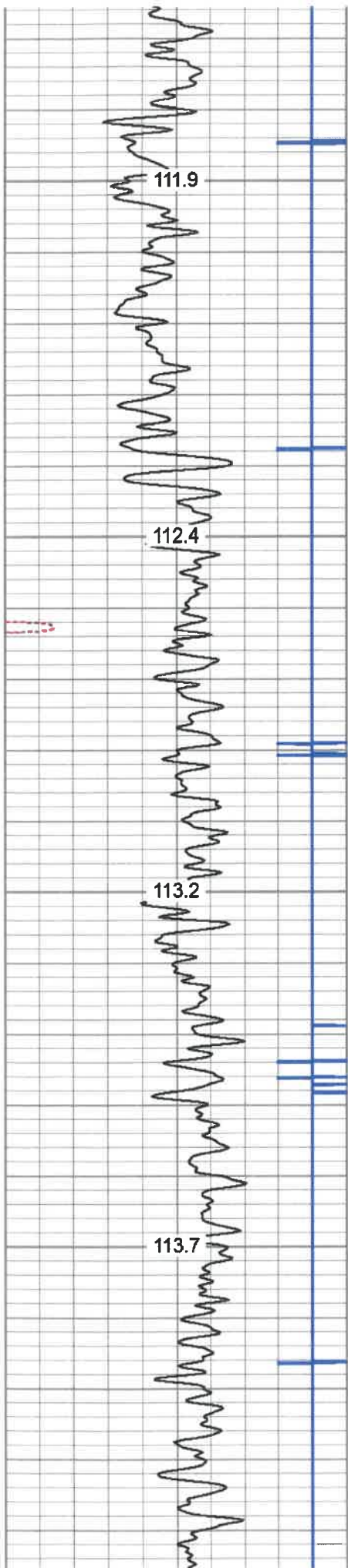
5050

5100

5150

5200



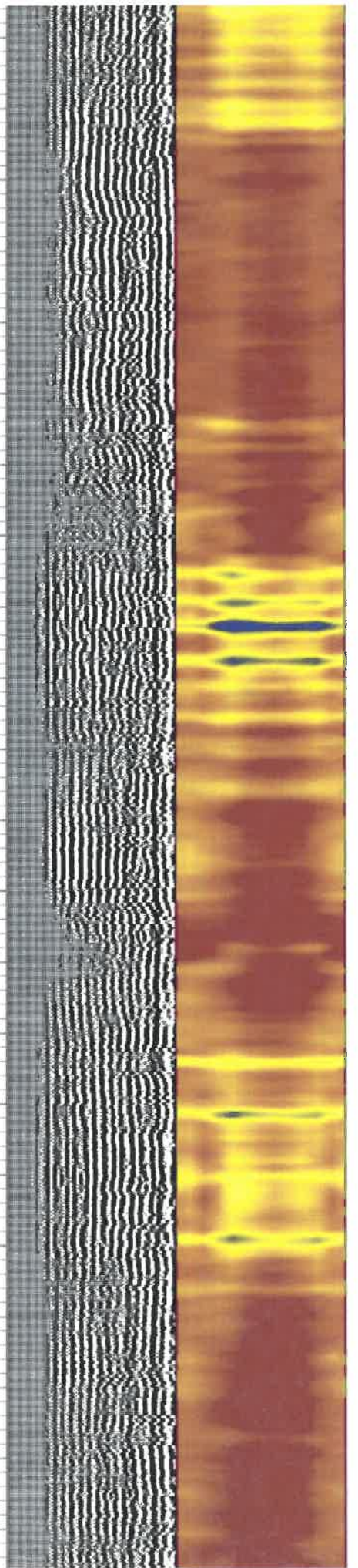
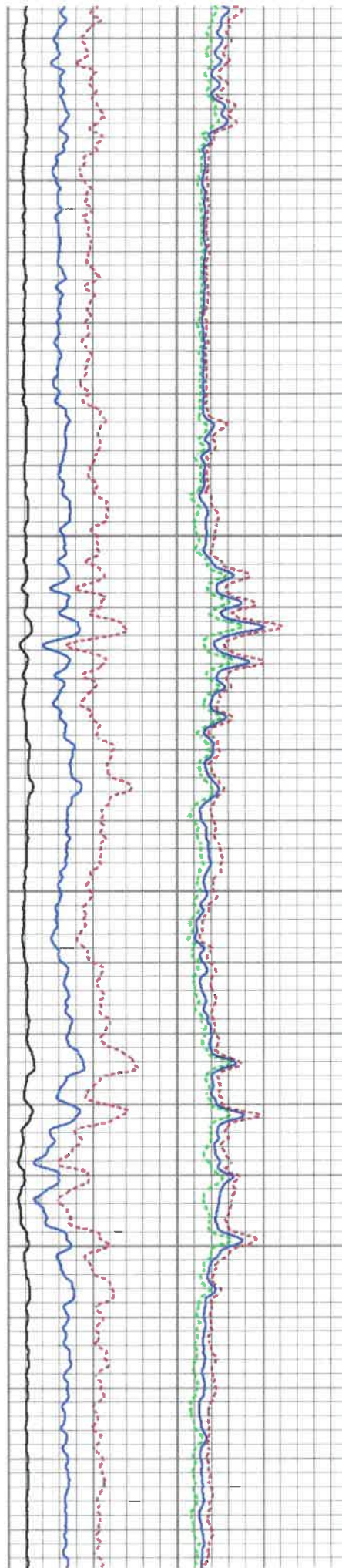


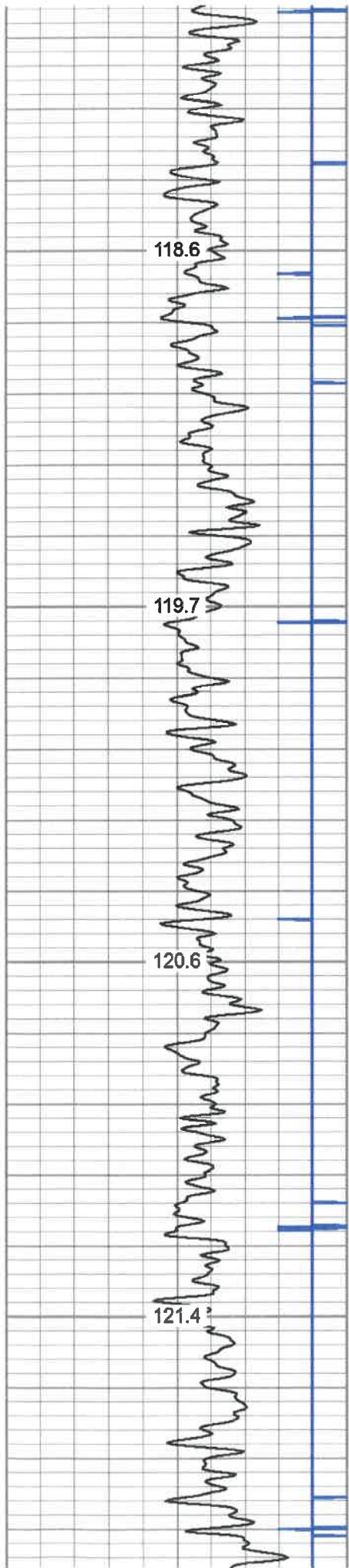
5450

5500

5550

5600



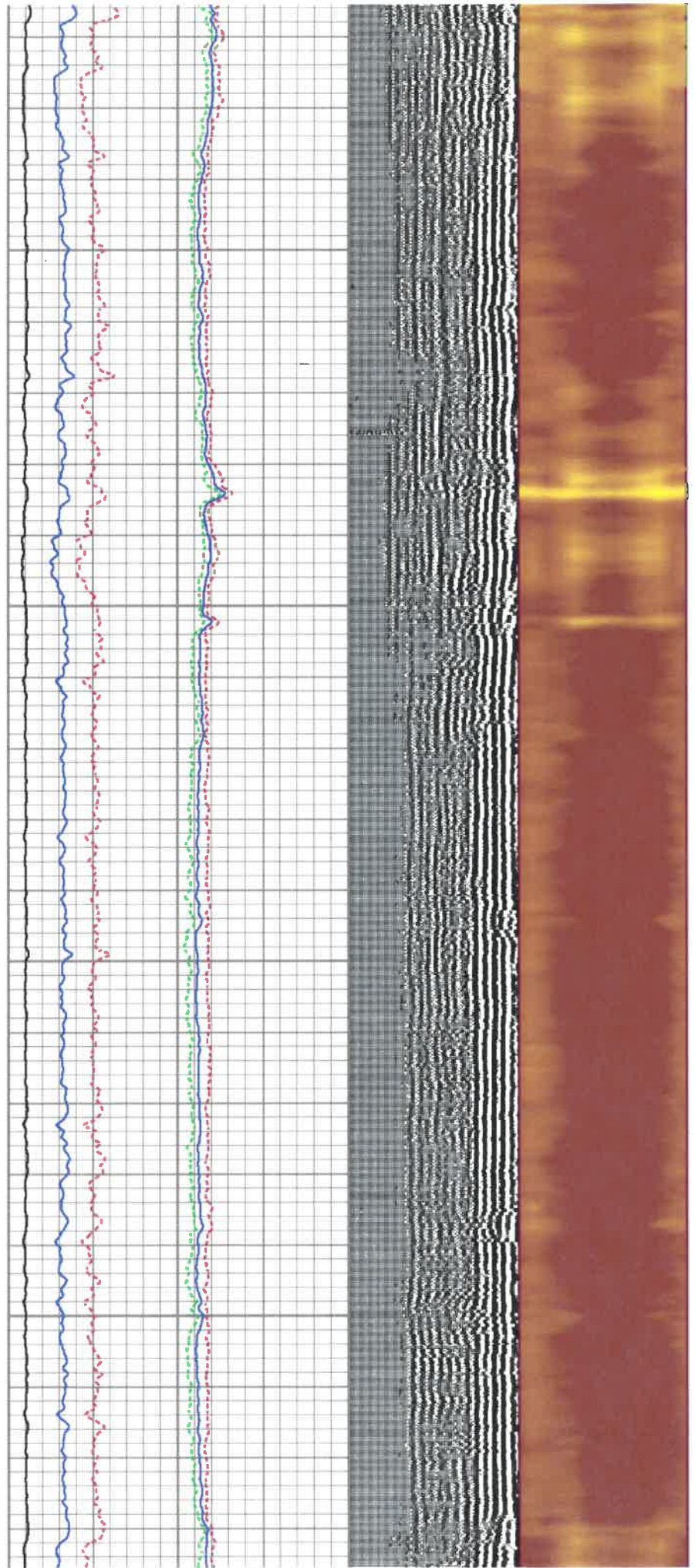


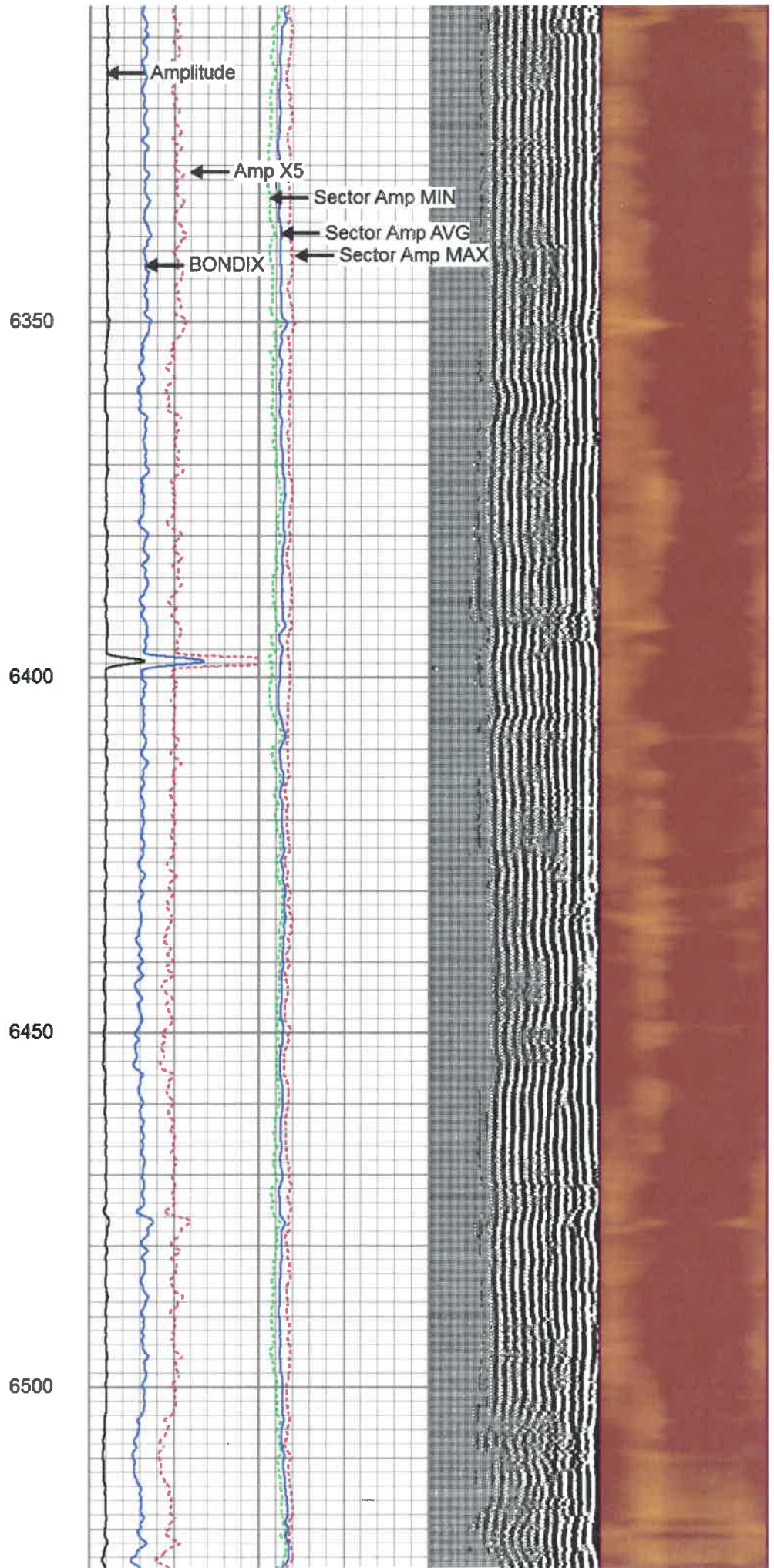
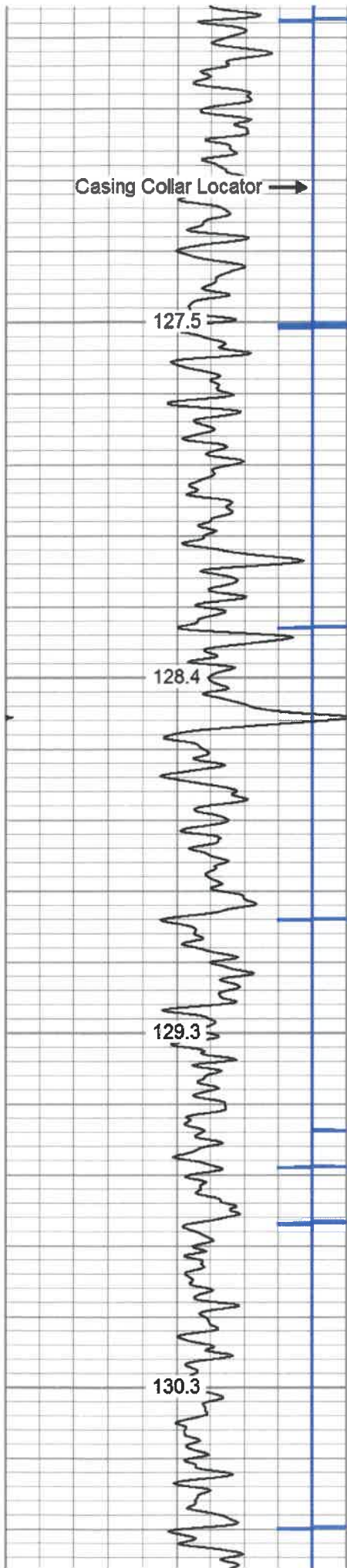
5900

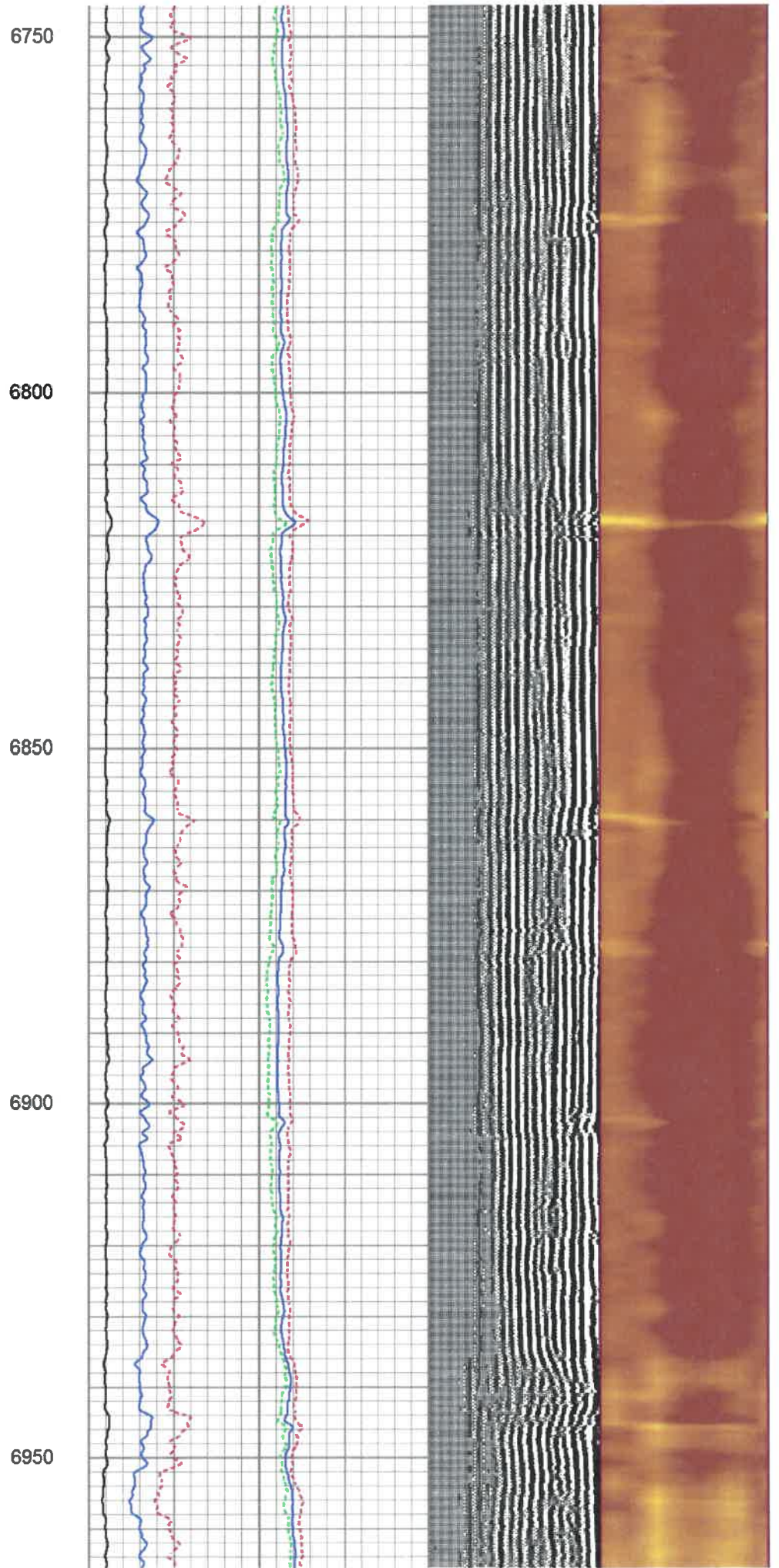
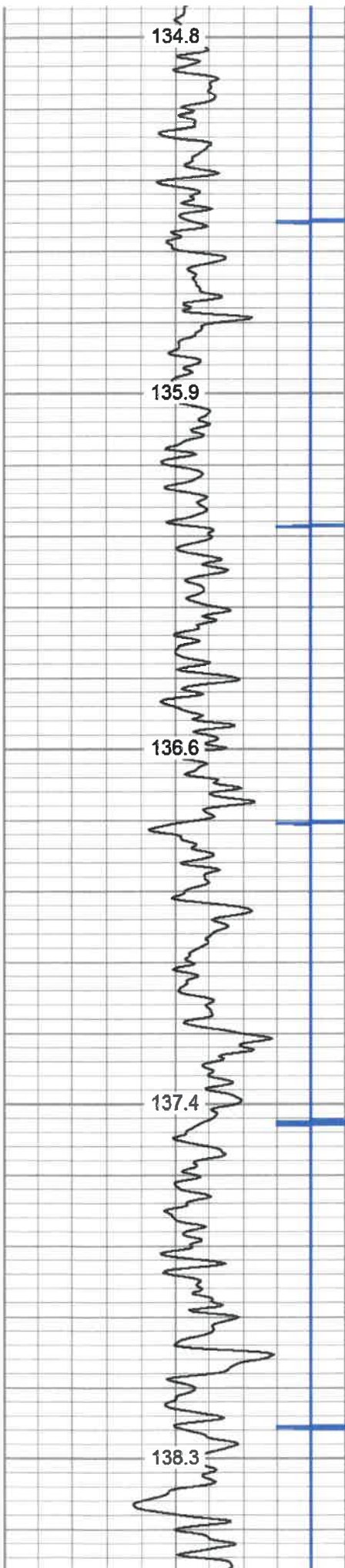
5950

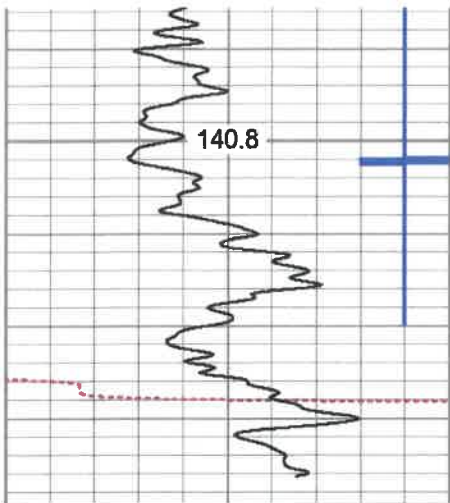
6000

6050

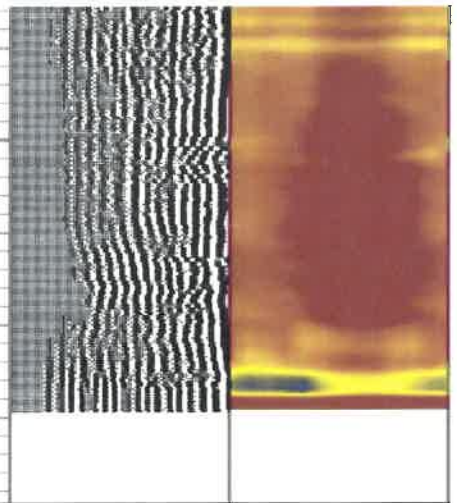
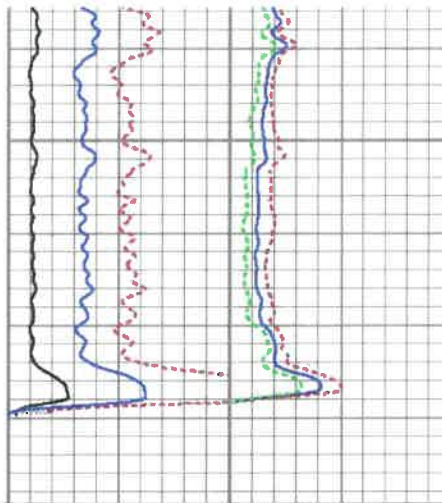








7200



280	Travel Time (usec)	180
9	Casing Collar	-1
0	Gamma Ray (GAPI)	180
180	GR (GAPI)	360
TEMP (degF)		

Amplitude	Sector Amp AVG
0 (mV) 100	Sector Amp MAX 200
Amp X5	Sector Amp MIN
0 (mV) 20	
1 BONDIX 0	

VDL	1 Sector Map 12
200 (usec) 1200	



MAIN LOG 1500 PSI



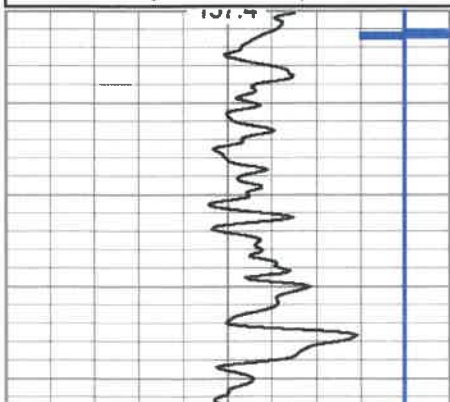
REPEAT PASS

Database File f:\anteroc.db
 Dataset Pathname REPEAT
 Presentation Format antero
 Dataset Creation Tue Sep 03 14:36:40 2019
 Charted by Depth in Feet scaled 1:240

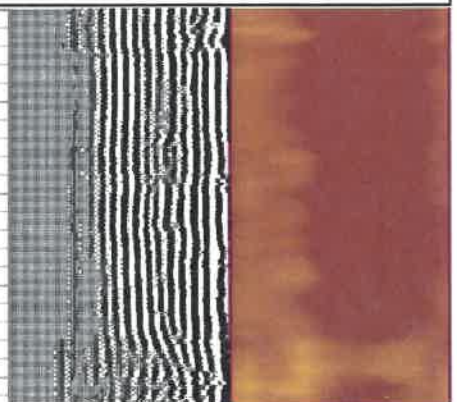
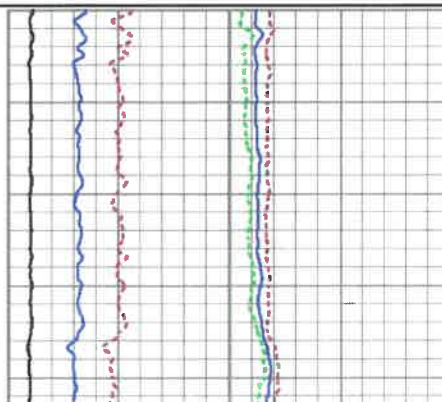
280	Travel Time (usec)	180
9	Casing Collar	-1
0	Gamma Ray (GAPI)	180
180	GR (GAPI)	360
TEMP (degF)		

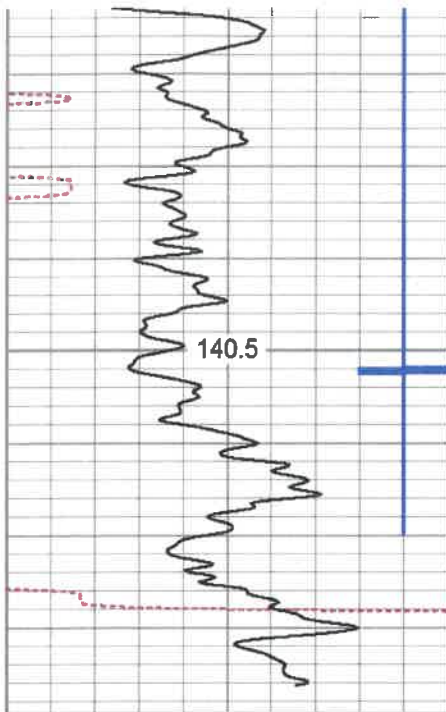
Amplitude	Sector Amp AVG
0 (mV) 100	Sector Amp MAX 200
Amp X5	Sector Amp MIN
0 (mV) 20	
1 BONDIX 0	

VDL	1 Sector Map 12
200 (usec) 1200	



6900

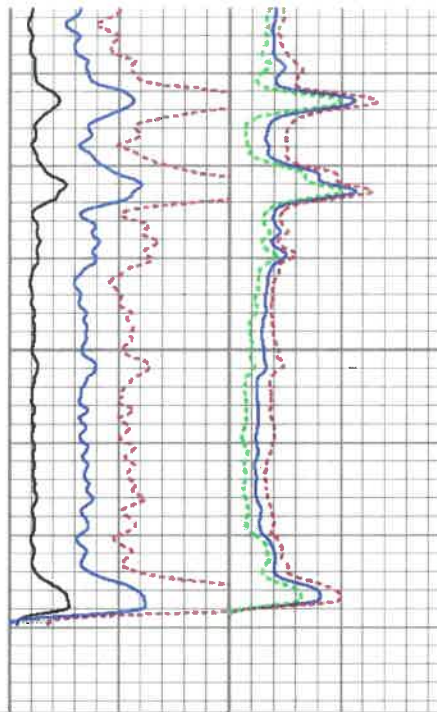




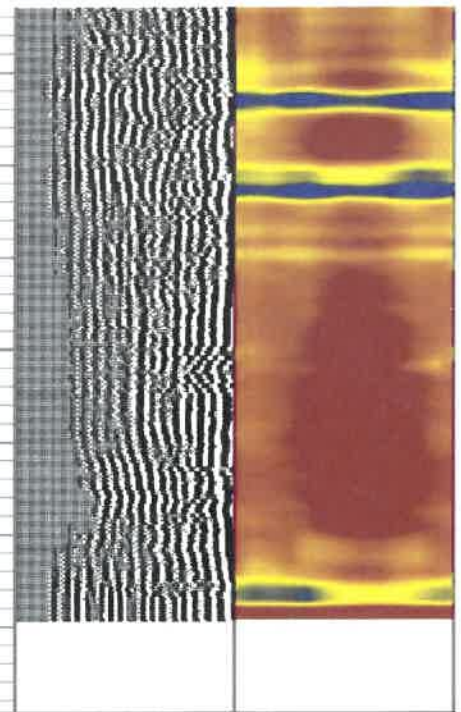
7200

280	Travel Time (usec)	180
9	Casing Collar	-1
0	Gamma Ray (GAPI)	180
180	GR (GAPI)	360

TEMP
(degF)



Amplitude	Sector Amp AVG
0 (mV) 100	Sector Amp MAX 200
Amp X5	Sector Amp MIN
0 (mV) 20	
1 BONDIX 0	



VDL	1 Sector Map 12
200 (usec) 1200	



REPEAT PASS

Log Variables

Database: \anteroc.db
Dataset: field/well/run1/pass2.7/_vars_

Top - Bottom

BHTEMP_Src	BOREID	BOTTEMP	CASEOD	CASETHCK	CASEWGHT	MAXAMPL
TEMP	in 7.875	degF 100	in 5.5	in 0	lb/ft 23	mV 71.9
MINAMPL	MINATTN	PERFS	PPT	SRFTEMP	TDEPTH	
mV 3.5	db/ft 0.8	No	usec 219	degF 0	ft 0	

Variable Description

BHTEMP_Src : BHTEMP Input Source Selector
BOREID : Borehole I.D.
BOTTEMP : Bottom Hole Temperature
CASEOD : Casing O.D.
CASETHCK : Casing Thickness
CASEWGHT : Casing Weight
MAXAMPL : Maximum Amplitude

MINAMPL : Minimum Amplitude
MINATTN : Minimum Attenuation
PERFS : Perforation Flag
PPT : Predicted Pipe Time
SRFTEMP : Surface Temperature
TDEPTH : Total Depth

Calibration Report

Database File: f:\anteroc.db
Dataset Pathname: pass2.7

CCL	19.20		CCL-312tekco (101) Tekco 3 1/8" 450 Deg. "F" SmCo Logging CCL	1.82	3.12	25.00	
			Tek-2.75 2 3/4" Tekco Adjustable Centralizer	2.73	2.75	25.00	
TEMP	13.04						
WVFSYNC	13.04						
WVFCAL	13.04						
WVFS12	11.75						
WVFS11	11.75						
WVFS10	11.75						
WVFS9	11.75						
WVFS8	11.75						
WVFS7	11.75						
WVFS6	11.75						
WVFS5	11.75						
WVFS4	11.75						
WVFS3	11.75						
WVFS2	11.75						
WVFS1	11.75						
WV3FT	11.00						
WV5FT	10.00						
WVTEMP	6.67						
			SCBL-Tek12 (T12_01) Tekco 400 Deg F 12 Sector RIB with Temp	9.13	3.25	135.00	
			Tek-2.75 2 3/4" Tekco Adjustable Centralizer	2.73	2.75	25.00	
			GR-Tek-Co 2 3/4 (0111) Tekco 2 3/4" 400 Deg. F Logging Gamma Ray	3.67	2.75	40.00	
GR	1.31		Titan-1.4375_Cap Titan 1 7/16" Cap	0.27	1.44	1.00	

Dataset: anteroc.db: field/well/run1/pass2.7
 Total length: 21.37 ft
 Total weight: 256.00 lb
 O.D.: 3.25 in



Company ANTERO RESOURCES CORPORATION
 Well OXFORD 97 CHS
 Field MARCELLUS