



# PHOENIX TECHNOLOGY SERVICES

**MD**  
**1:240**  
**Feet**

**Client:** EQT  
**Well Name:** 512419  
**County:** Doddridge Co, WV

**MWD Gamma / ROP**

**Unique ID/API:** 47-170-5987

**Company Representative**

**Surface Location:** Doddridge Co, WV

**Bob Wadley**

**Country:** USA

**State:** WV

**Rig Name:** Savanna 654

**Geologist**

**Latitude:** 39°8'42.686 N

**Dane Fischer**

**Longitude:** 80°48'51.450 W

**License/Permit#:**

**Directional Drillers**

**Job No:** 1130500

**Jason Jones**

**Permanent Datum:** 0

**Rusty Harris**

**Drilling Measurement From:** 0

**GL:** 1166 Feet

**MWD Operator**

**KB:** 1183 Feet

**Anthony Akers**

**Spud Date:** -

**Noel Parker**

**Print Date:** September 7, 2011

**David Curtis**

**Log Start Depth:** 6100 Feet

**Log End Depth:** 9750 Feet

**Bottom Hole Temp:** NA °F

**Leg Name**

**Main Leg**

**Comments:**

PHOENIX TECHNOLOGY SERVICES LP ("PHOENIX") DOES NOT MAKE AND EXPRESSLY DISCLAIMS ALL WARRANTIES, REPRESENTATIONS AND CONDITIONS, WITH RESPECT TO THE INFORMATION CONTAINED IN THIS DOCUMENT, WHETHER ORAL OR WRITTEN, EXPRESS OR IMPLIED OR ARISING FROM CONTRACT OR STATUTE INCLUDING, WITHOUT LIMITATION, THE IMPLIED WARRANTIES OF MERCHANTABILITY, ACCURACY AND FITNESS FOR A PARTICULAR PURPOSE. ANYONE USING THIS INFORMATION DOES SO AT THEIR OWN RISK AND ACKNOWLEDGES AND AGREES THAT PHOENIX SHALL NOT BE LIABLE FOR ANY ERROR, OMISSION, DEFECT, DEFICIENCY, OR NONCONFORMITY IN THE INFORMATION AND WITHOUT LIMITING THE FOREGOING, PHOENIX DOES NOT WARRANT THAT THE INFORMATION (OR THE USE THEREOF) WILL BE FREE OF ALL ERRORS OR THAT IT DOES NOT INFRINGE ANY THIRD PARTY RIGHTS. ANYONE USING THE INFORMATION AGREES TO INDEMNIFY AND HOLD PHOENIX HARMLESS FROM ALL CLAIMS, ACTIONS, COSTS (INCLUDING LEGAL COSTS ON A SOLICITON AND HIS OWN CLIENT BASIS) AND LIABILITIES ARISING FROM OR IN CONNECTION WITH THE USE OF THE INFORMATION.

BitRun:	1	2
Start Depth (ft):	6100	7158.1
End Depth (ft):	7158.1	9746.98
Start Date:		2011/09/05
End Date:	2011/09/04	2011/09/07
Gamma Scale Factor:	4.031	4.031
Survey-to-Bit (PTB):	56	56
Gamma-to-Bit (GTB):	51	51
Tool Carrier ID (in):	2.875	2.875
Tool Carrier OD (in):	5	5
Hole Size (in):	8.5	7.875
Casing Size (in):	9.625	9.625
Casing Start Depth (ft):	0	0
Casing End Depth (ft):	3031	3031
Mud Type:	WBM	WBM
Mud Weight (lb/gal):	12.3	12.3
Mud Viscosity:	41	41
KCL Correction Factor:	0.000	0.000
Mud KCL Content (%):	0.0001	0.0001
Comment:	-	-

BitRun:		
Start Depth (ft):		
End Depth (ft):		
Start Date:		
End Date:		
Gamma Scale Factor:		
Survey-to-Bit (PTB):		
Gamma-to-Bit (GTB):		
Tool Carrier ID (in):		
Tool Carrier OD (in):		
Hole Size (in):		
Casing Size (in):		
Casing Start Depth (ft):		
Casing End Depth (ft):		
Mud Type:		
Mud Weight (lb/gal):		
Mud Viscosity:		
KCL Correction Factor:		
Mud KCL Content (%):		
Comment:		

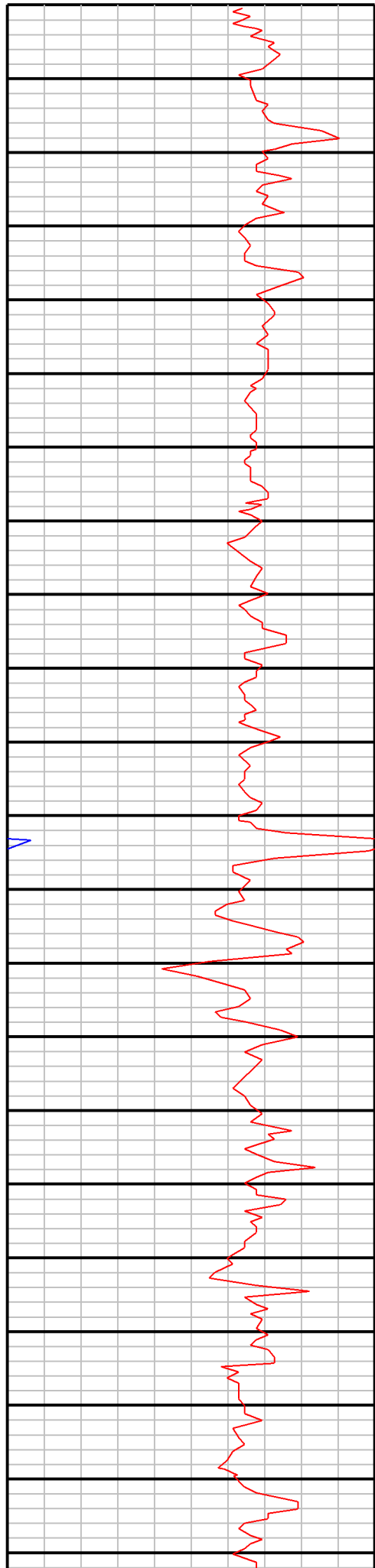


EQT  
512419  
Doddrige Co, WV  
1130500

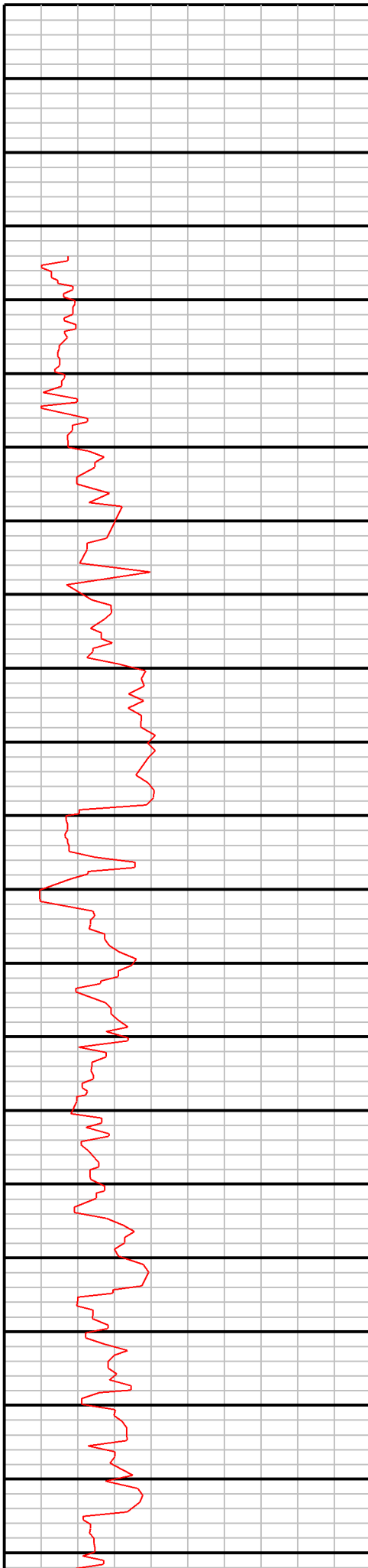
**MD**  
**1:240**  
**Feet**

0	Gamma (API)	250
250	Gamma (API)	500
500	Gamma (API)	750

0	ROP (ft/hr)	200
200	ROP (ft/hr)	400



6100  
6110  
6120  
6130  
6140  
6150  
6160  
6170  
6180  
6190  
6200  
6210  
6220  
6230  
6240  
6250  
6260  
6270  
6280  
6290  
6300  
6310



MD: 6100  
INC: 4.7  
AZM: 44

MD: 6120  
INC: 4.7  
AZM: 36.6

MD: 6152  
INC: 6.2  
AZM: 350.5

MD: 6184  
INC: 8.3  
AZM: 335

MD: 6216  
INC: 9  
AZM: 332.9

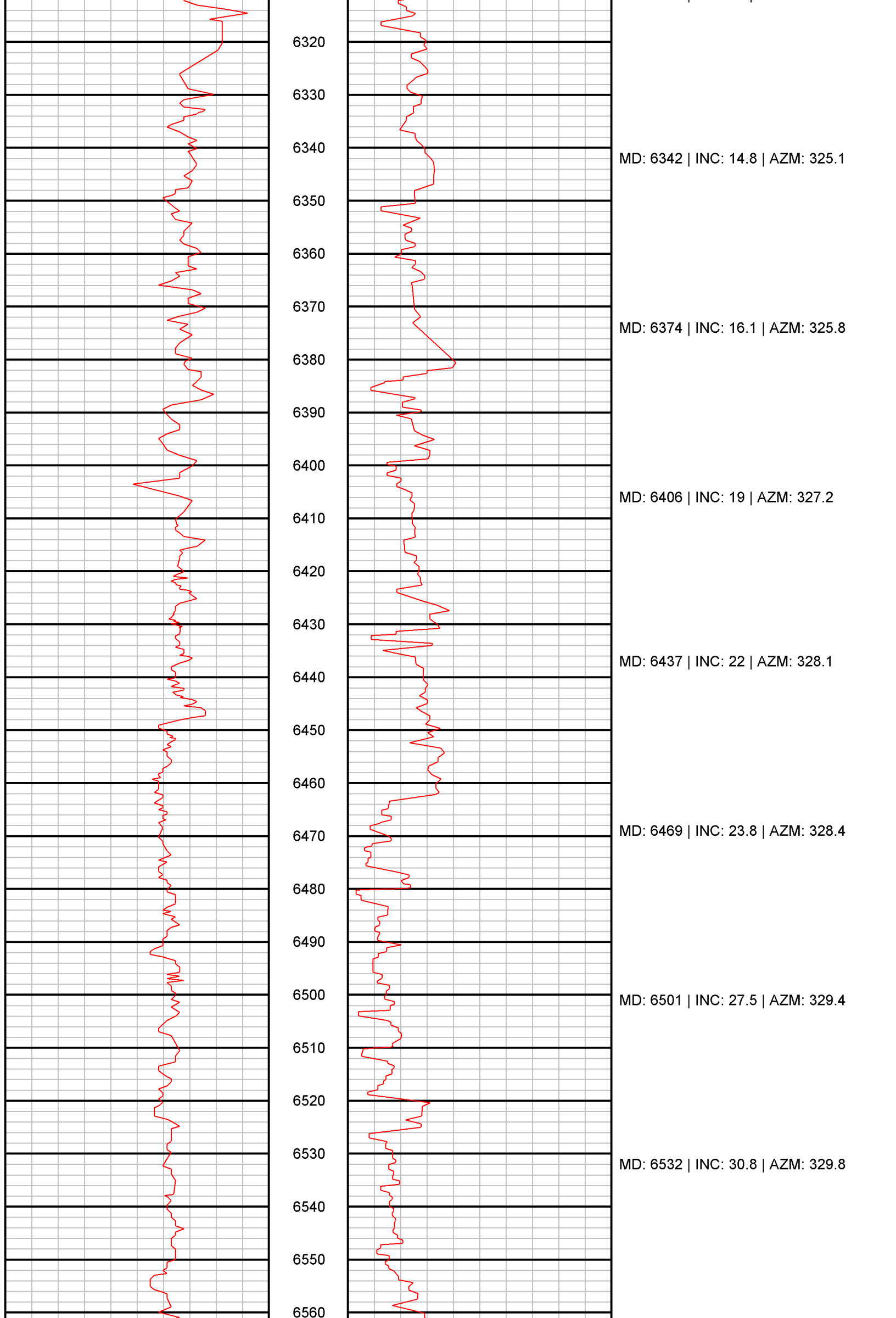
MD: 6247 | INC: 10.3 | AZM: 330.9

MD: 6279 | INC: 13.1 | AZM: 330.4

MD: 6311 | INC: 15 | AZM: 328.7



**PHOENIX**  
**TECHNOLOGY SERVICES**



6320

6330

6340

MD: 6342 | INC: 14.8 | AZM: 325.1

6350

6360

6370

MD: 6374 | INC: 16.1 | AZM: 325.8

6380

6390

6400

MD: 6406 | INC: 19 | AZM: 327.2

6410

6420

6430

MD: 6437 | INC: 22 | AZM: 328.1

6440

6450

6460

6470

MD: 6469 | INC: 23.8 | AZM: 328.4

6480

6490

6500

MD: 6501 | INC: 27.5 | AZM: 329.4

6510

6520

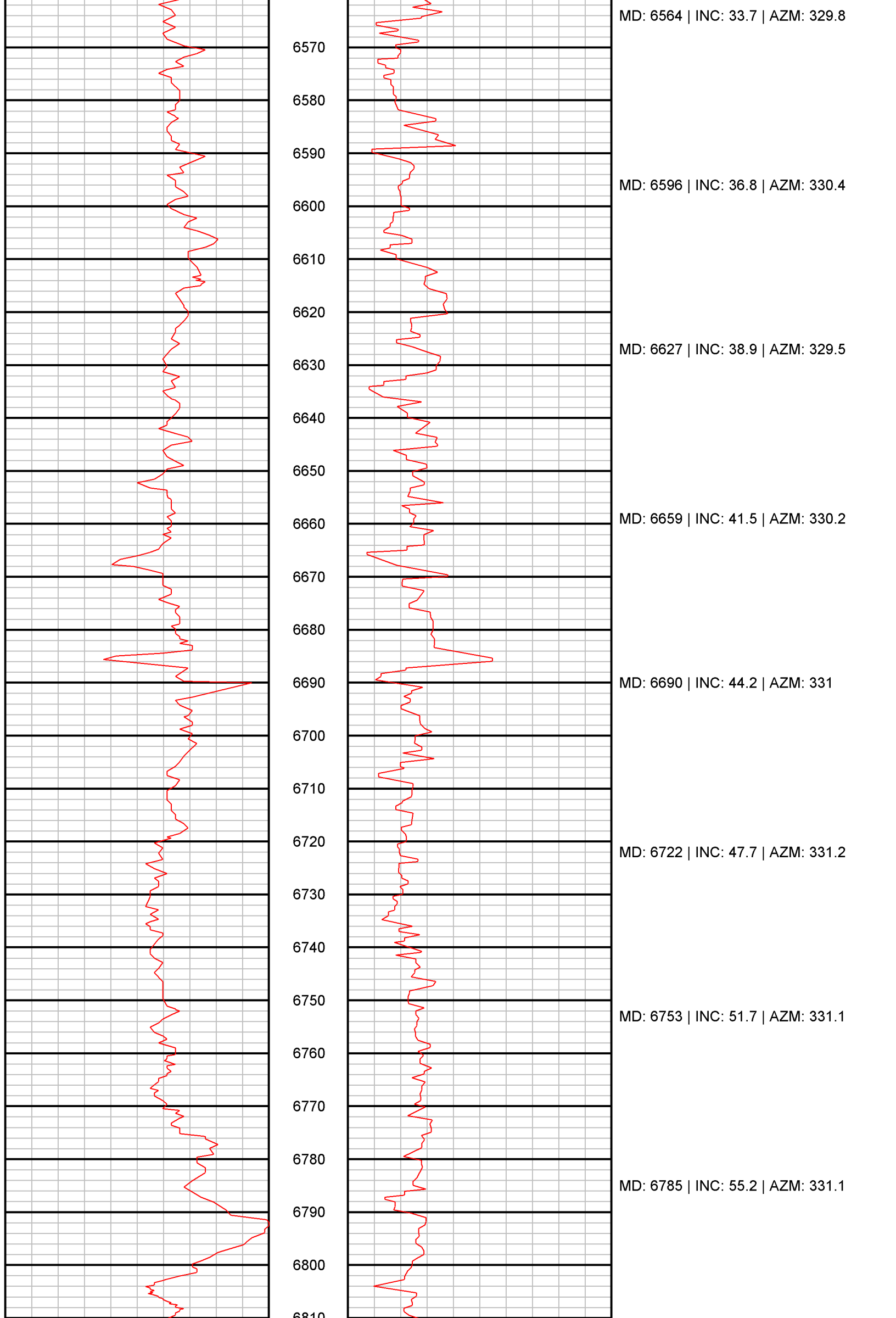
6530

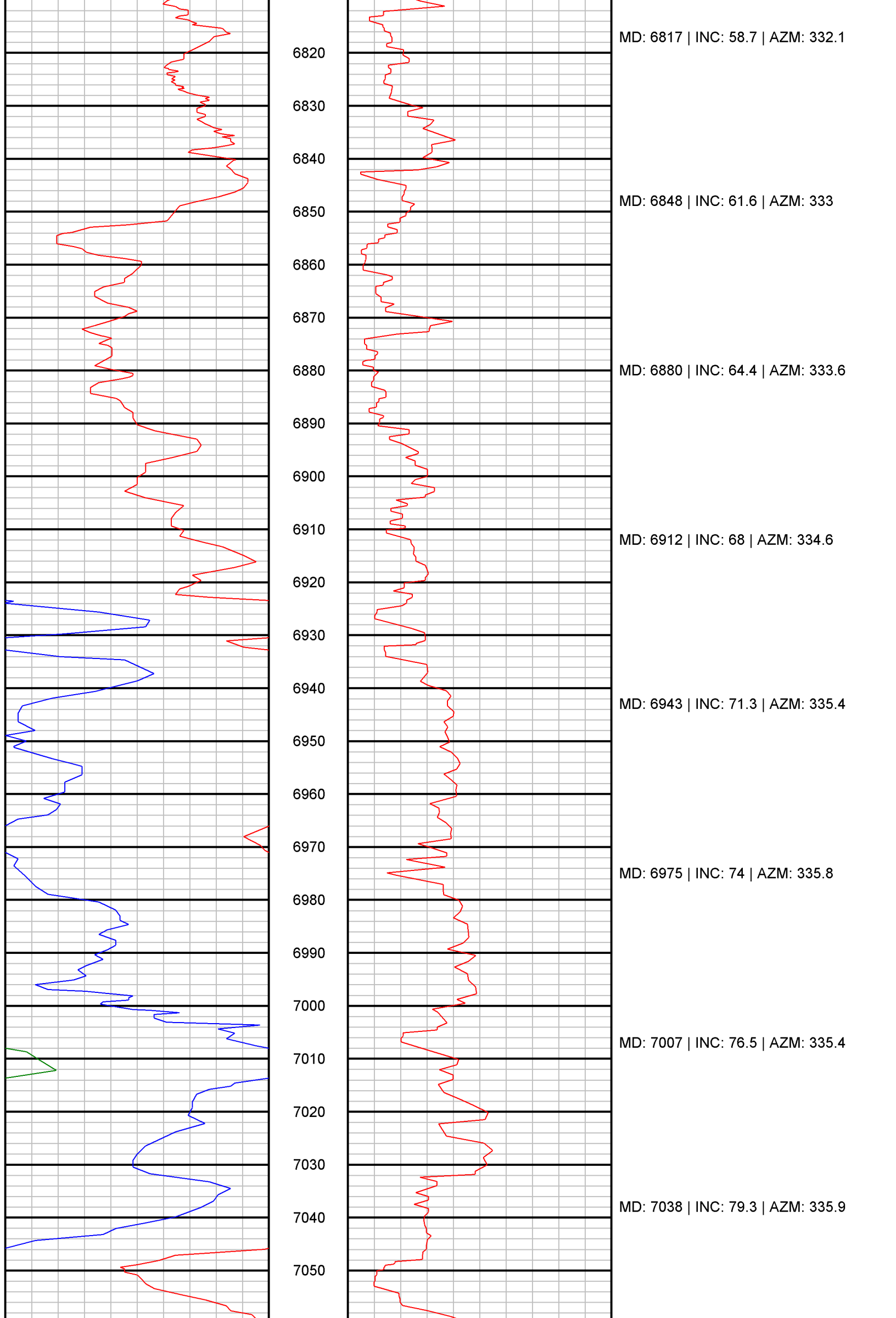
MD: 6532 | INC: 30.8 | AZM: 329.8

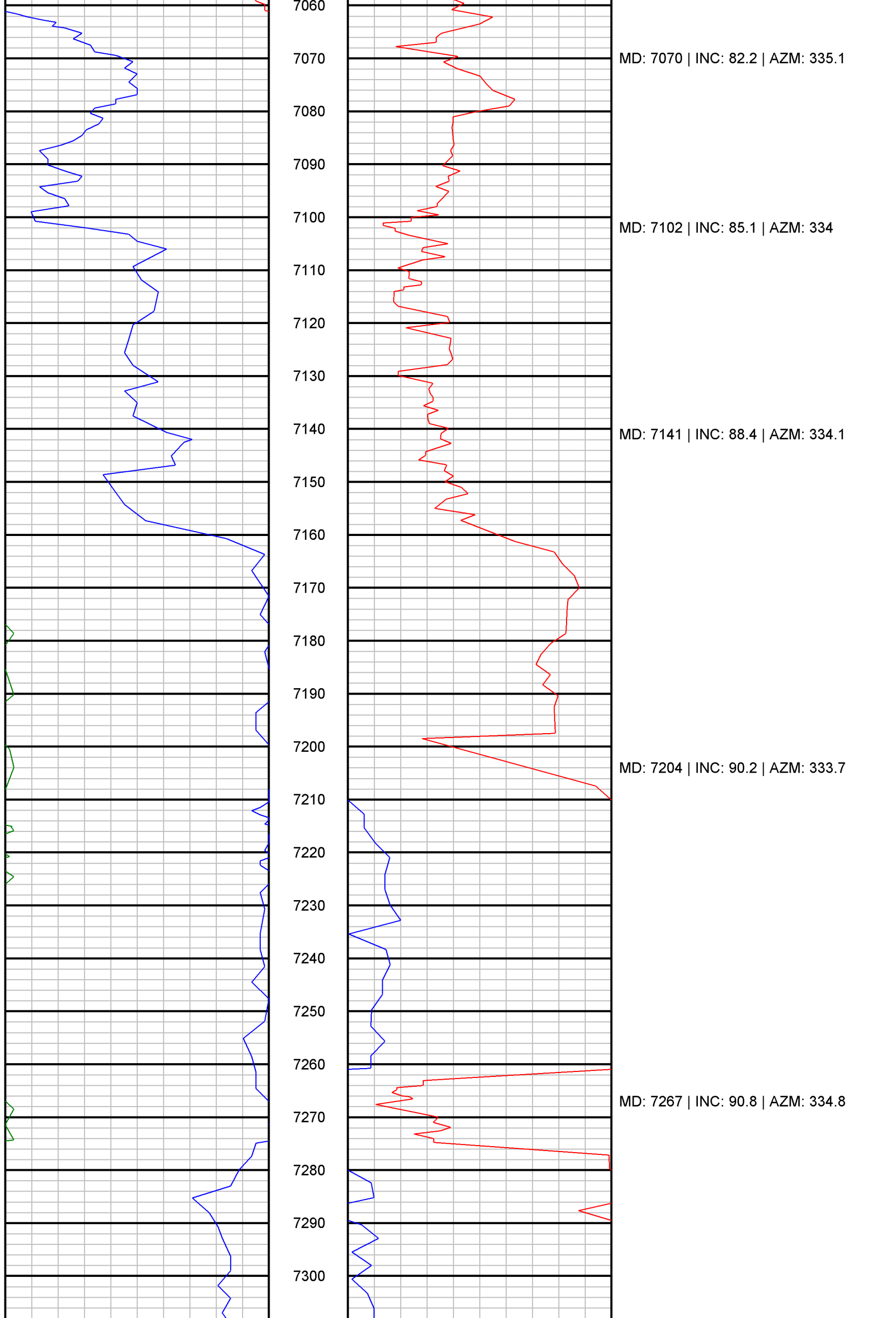
6540

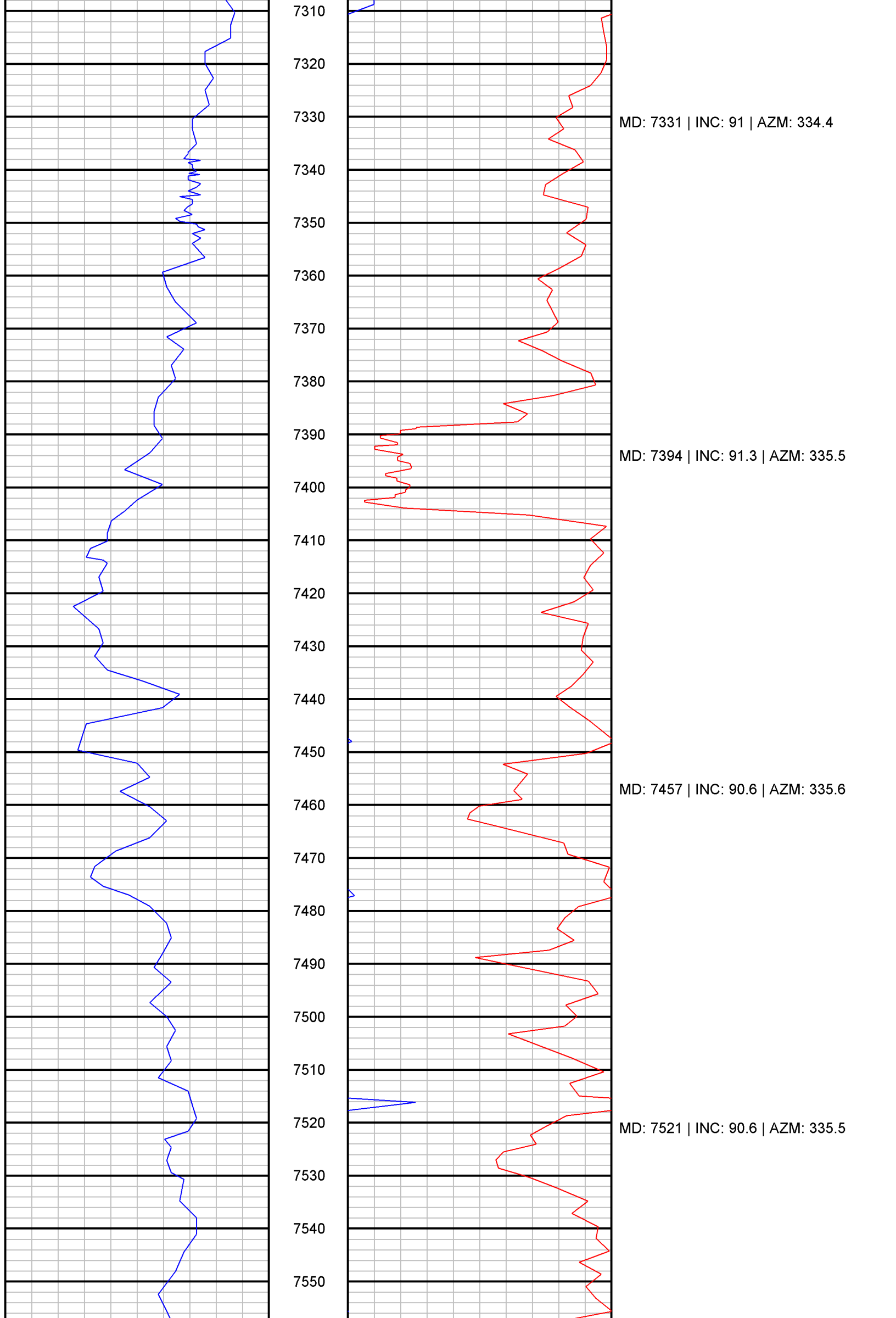
6550

6560







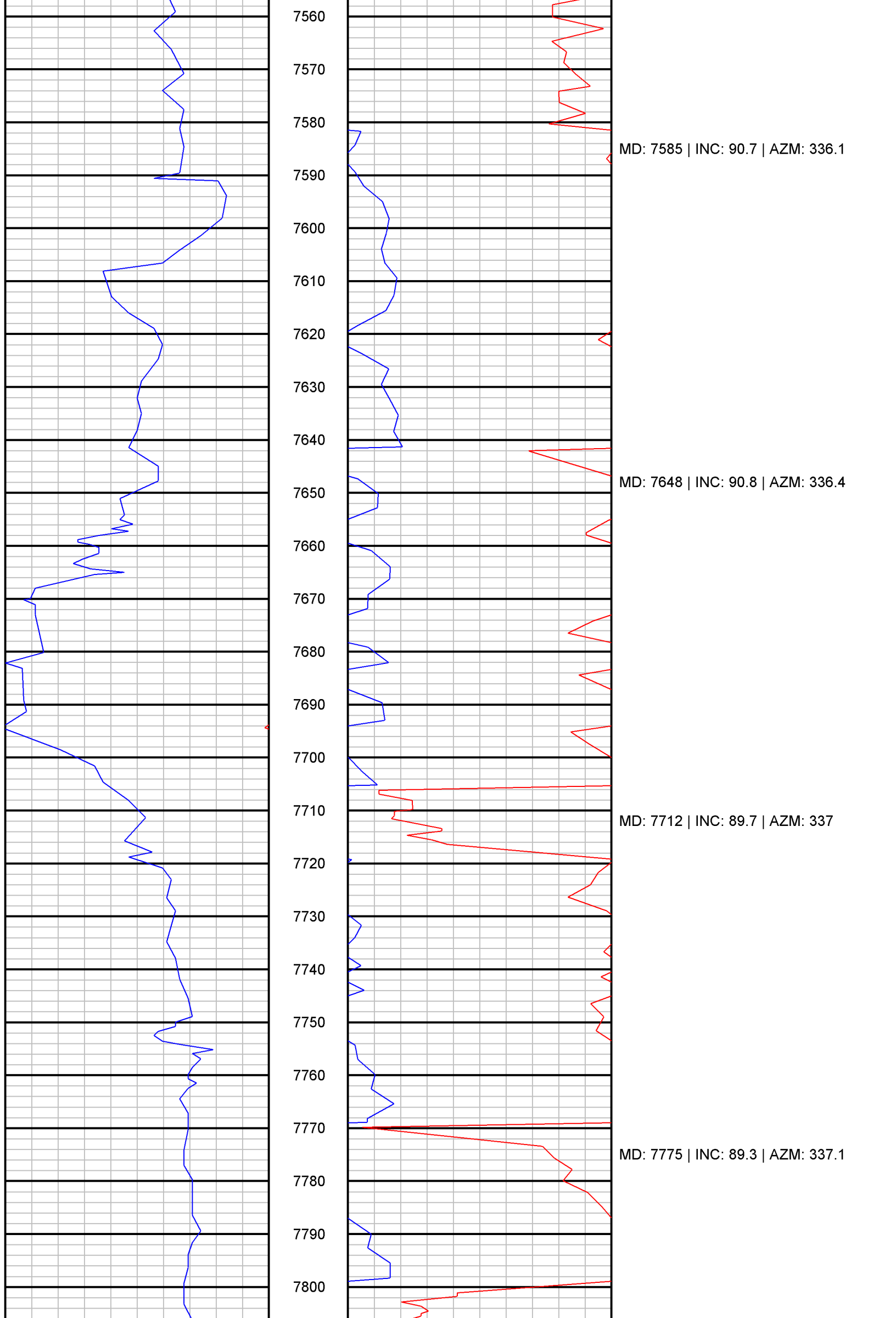


MD: 7331 | INC: 91 | AZM: 334.4

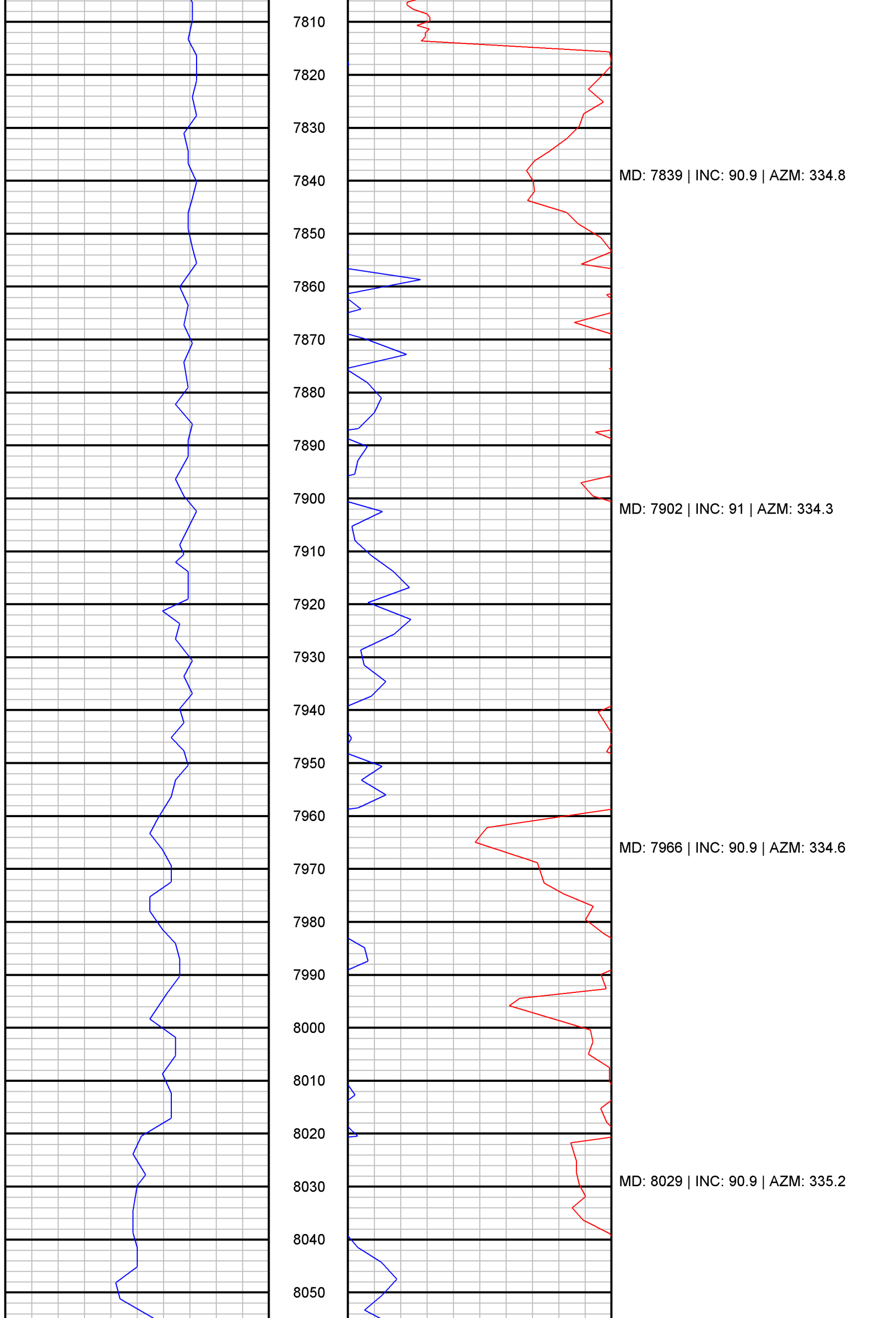
MD: 7394 | INC: 91.3 | AZM: 335.5

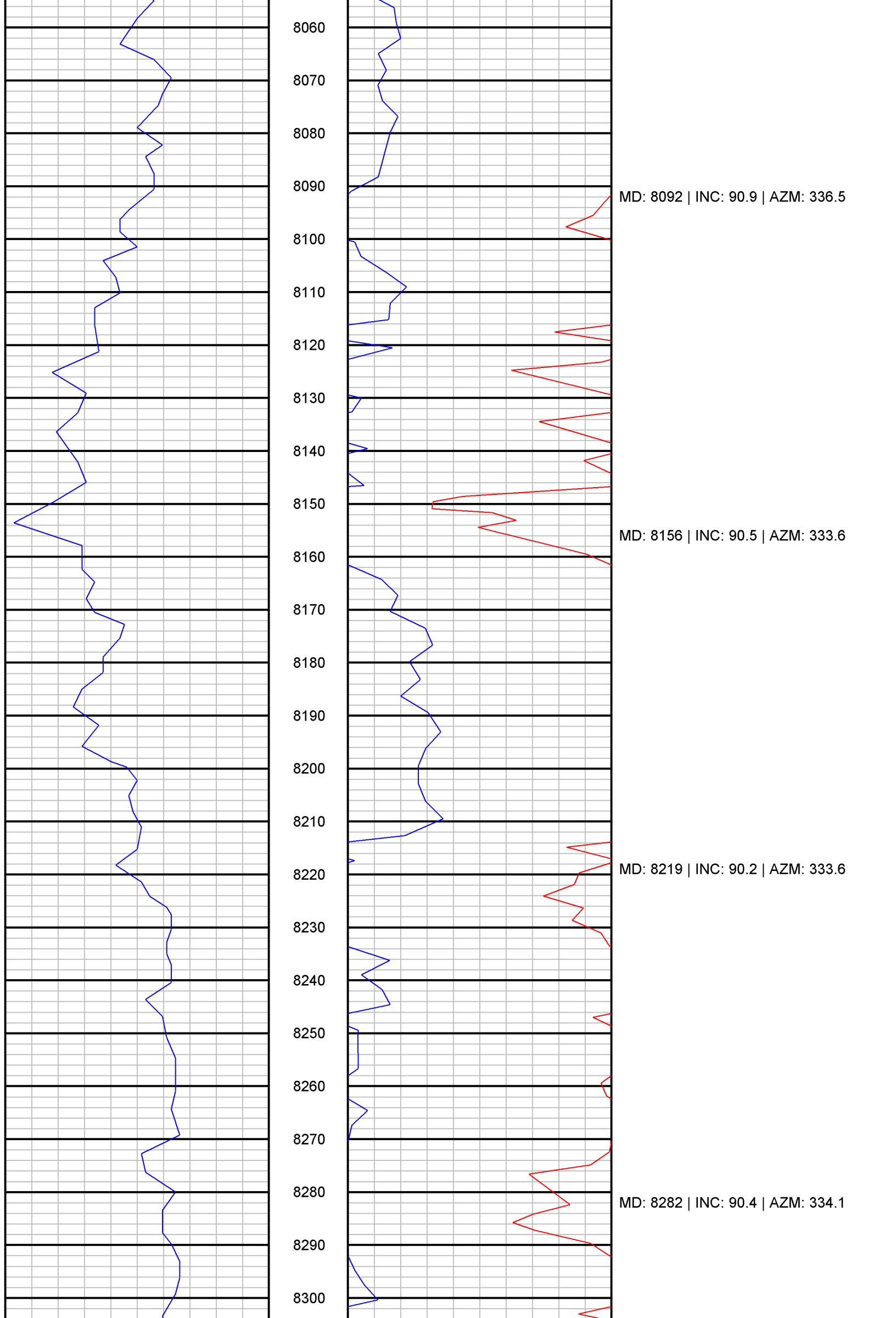
MD: 7457 | INC: 90.6 | AZM: 335.6

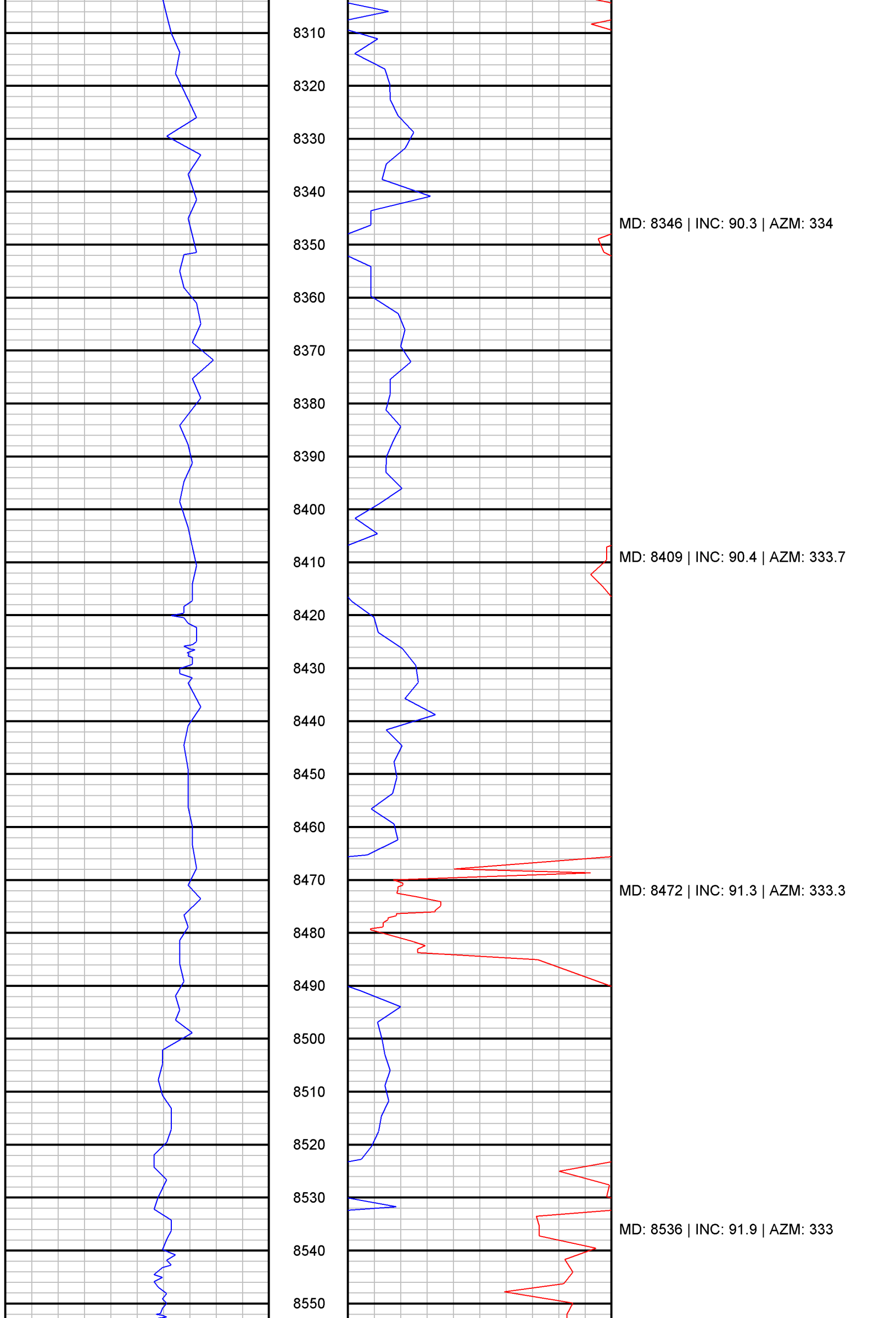
MD: 7521 | INC: 90.6 | AZM: 335.5

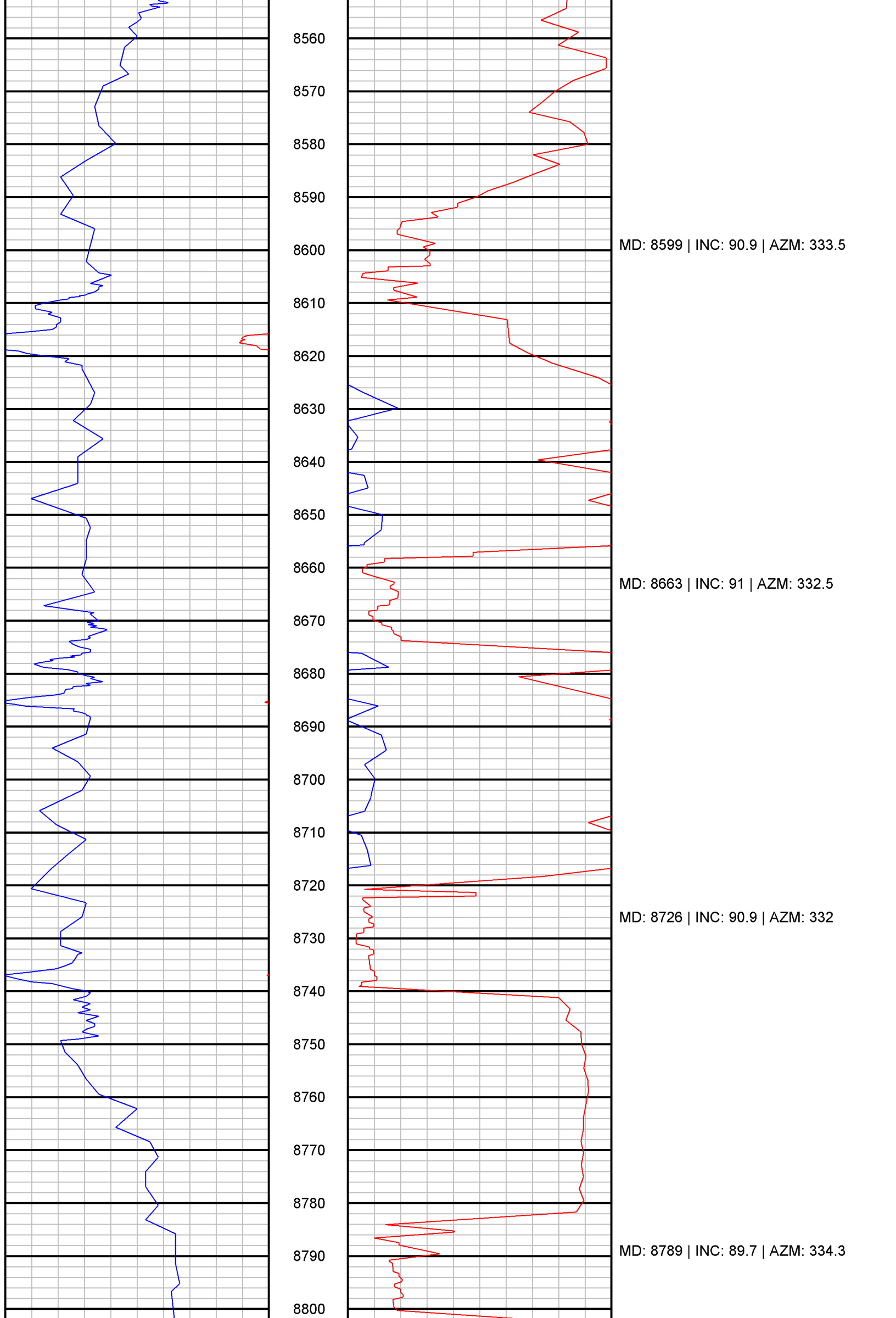


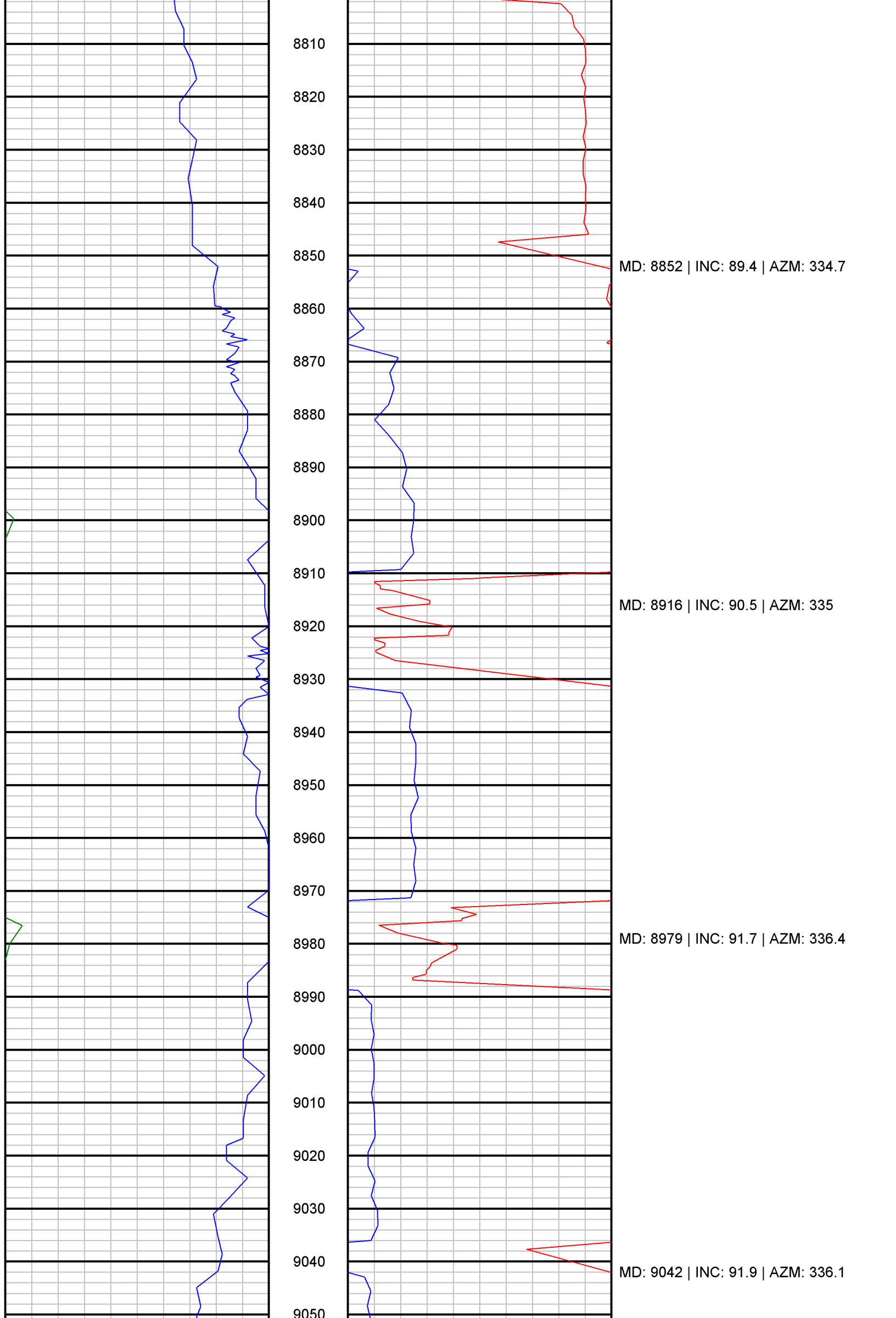


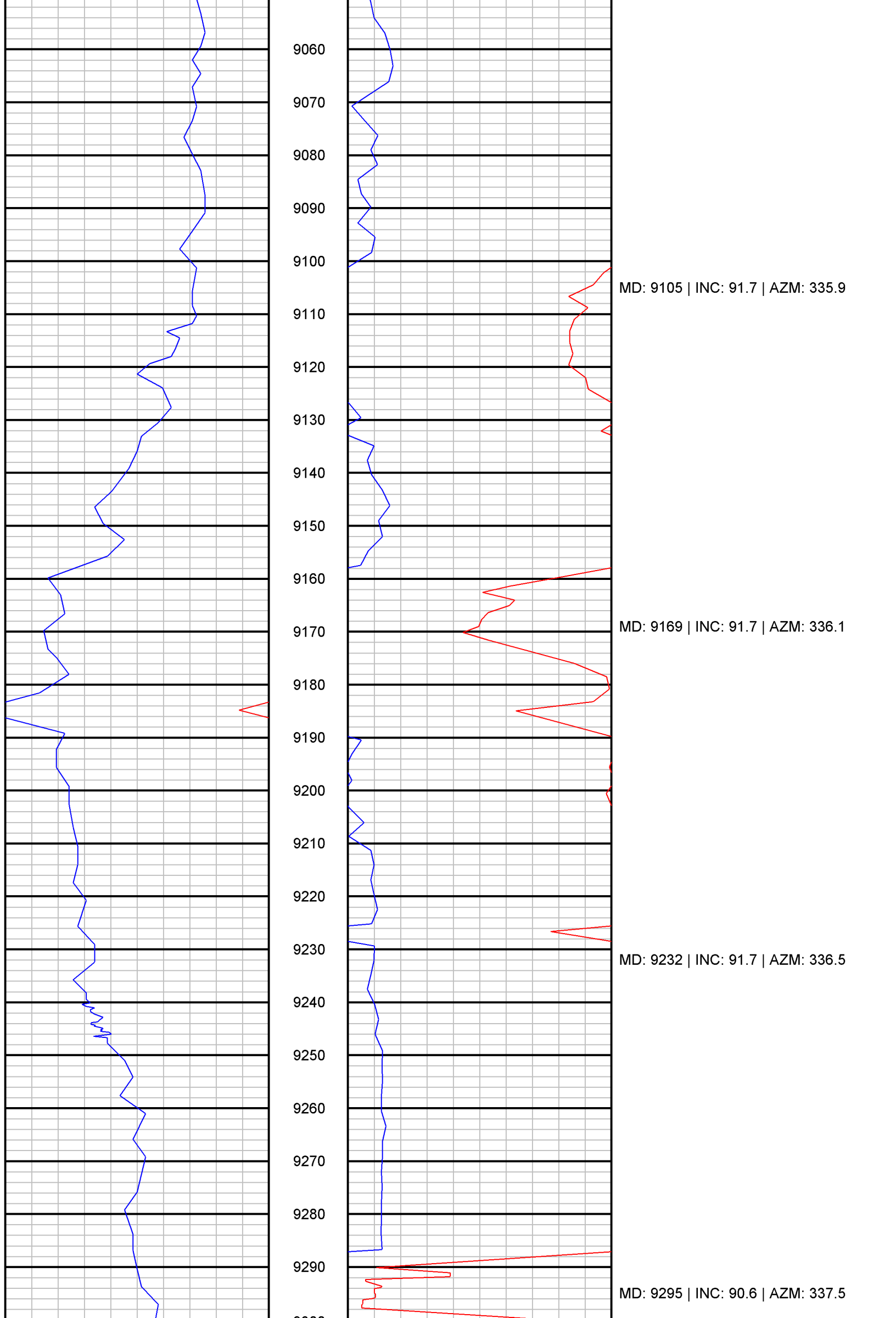


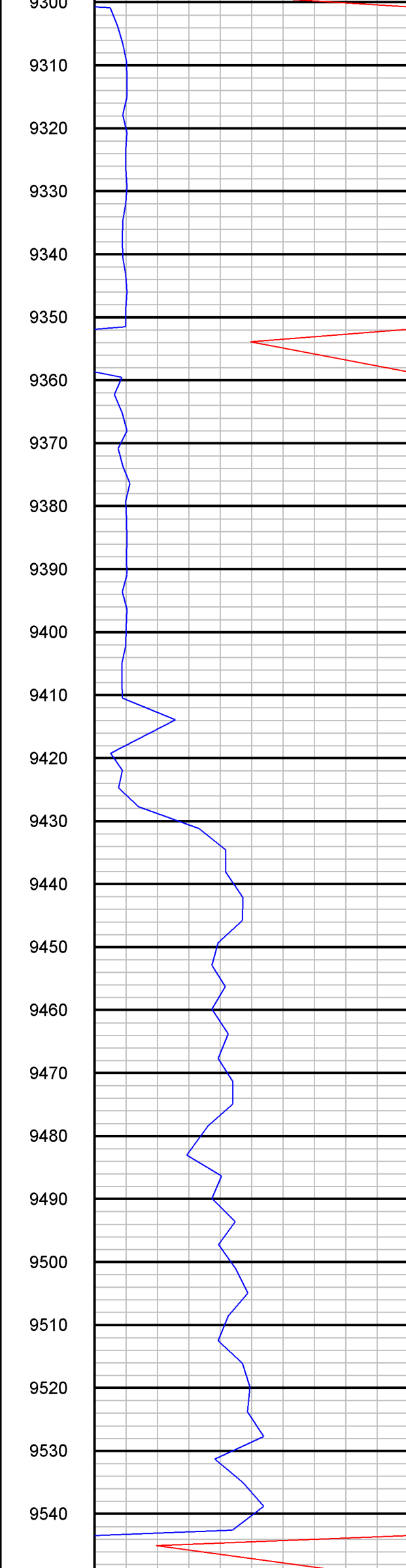
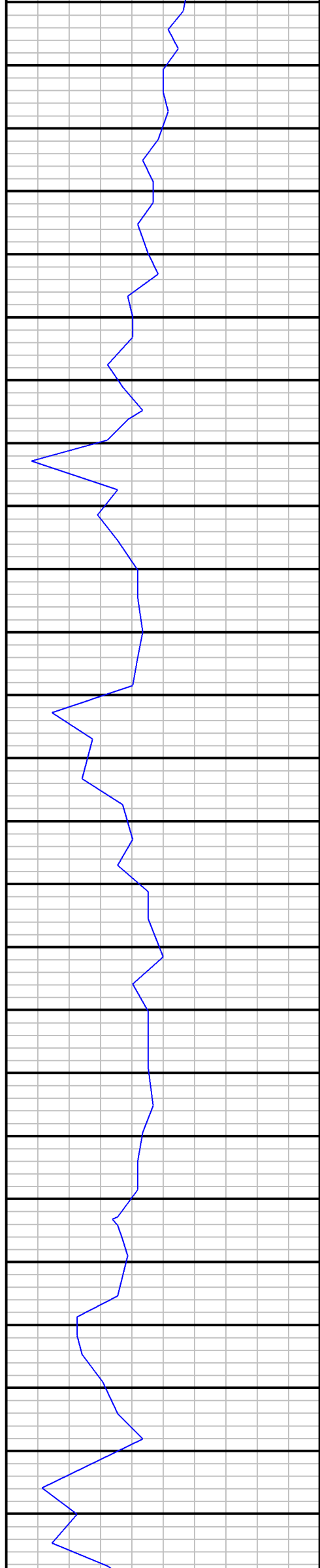










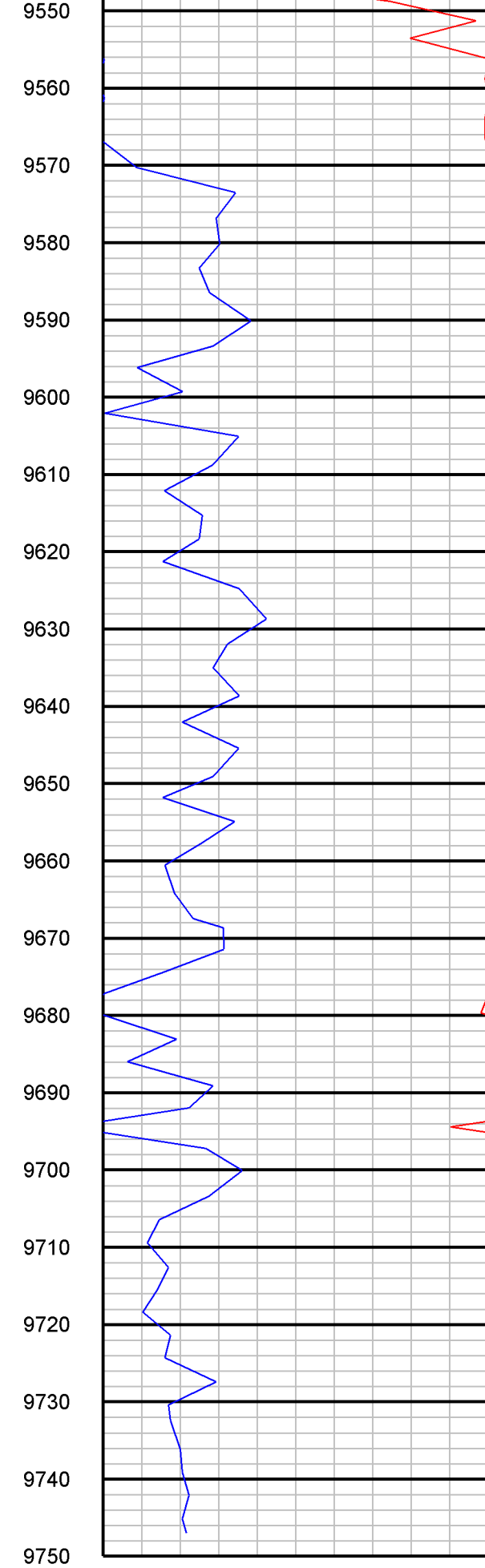
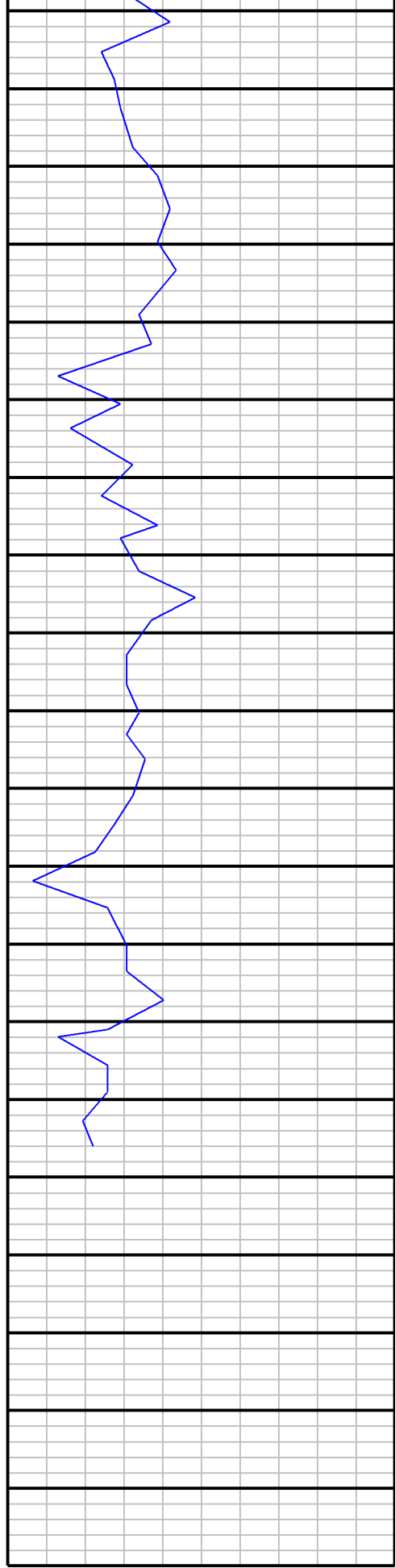


MD: 9359 | INC: 90.3 | AZM: 338.3

MD: 9422 | INC: 90.7 | AZM: 339.2

MD: 9486 | INC: 90.3 | AZM: 339.5

MD: 9549 | INC: 90.3 | AZM: 338.3



MD: 9549 | INC: 90.4 | AZM: 340.2

MD: 9612 | INC: 90 | AZM: 341.9

MD: 9676 | INC: 89.8 | AZM: 341.6

MD: 9691 | INC: 89.8 | AZM: 341.2

MD: 9747 | INC: 89.8 | AZM: 341.2