



PHOENIX TECHNOLOGY SERVICES

MD
1:240
Feet

Client: **EQT**
Well Name: **512418**
County: **Doddridge Co.**

MWD Gamma / ROP

Company Representative

Unique ID/API: **47-0175986H**
Surface Location: **Doddridge Co.**

Bo Murray

Country: **USA**
State: **WV**

Geologist

Rig Name: **Savanna 654**
Latitude: **39° 8' 42.591 N**
Longitude: **80° 48 51 .559**

Dane Fischer

License/Permit#: **5986H**
Job No: **1130455**

Directional Drillers

Permanent Datum: **0**

Jason Jones
Rusty Harris

Drilling Measurement From: **0**

GL: **0** Feet
KB: **0** Feet

MWD Operator

Spud Date: **-**

Anthony Akers

Print Date: **August 28, 2011**

Log Start Depth: **6330** Feet
Log End Depth: **9880** Feet

Noel Parker
David Curtis

Bottom Hole Temp: **NA** °F

Leg Name

Main Leg

Comments:

PHOENIX TECHNOLOGY SERVICES LP ("PHOENIX") DOES NOT MAKE AND EXPRESSLY DISCLAIMS ALL WARRANTIES, REPRESENTATIONS AND CONDITIONS, WITH RESPECT TO THE INFORMATION CONTAINED IN THIS DOCUMENT, WHETHER ORAL OR WRITTEN, EXPRESS OR IMPLIED OR ARISING FROM CONTRACT OR STATUTE INCLUDING, WITHOUT LIMITATION, THE IMPLIED WARRANTIES OF MERCHANTABILITY, ACCURACY AND FITNESS FOR A PARTICULAR PURPOSE. ANYONE USING THIS INFORMATION DOES SO AT THEIR OWN RISK AND ACKNOWLEDGES AND AGREES THAT PHOENIX SHALL NOT BE LIABLE FOR ANY ERROR, OMISSION, DEFECT, DEFICIENCY, OR NONCONFORMITY IN THE INFORMATION AND WITHOUT LIMITING THE FOREGOING, PHOENIX DOES NOT WARRANT THAT THE INFORMATION (OR THE USE THEREOF) WILL BE FREE OF ALL ERRORS OR THAT IT DOES NOT INFRINGE ANY THIRD PARTY RIGHTS. ANYONE USING THE INFORMATION AGREES TO INDEMNIFY AND HOLD PHOENIX HARMLESS FROM ALL CLAIMS, ACTIONS, COSTS (INCLUDING LEGAL COSTS) ON A SOLICITON AND HIS OWN CLIENT BASIS) AND LIABILITIES ARISING FROM OR IN CONNECTION WITH THE USE OF THE INFORMATION.

BitRun:	1	2
Start Depth (ft):	6330	6675
End Depth (ft):	6675	9875
Start Date:		2011/08/25
End Date:	2011/08/24	2011/08/28
Gamma Scale Factor:	4.031	4.031
Survey-to-Bit (PTB):	57	46
Gamma-to-Bit (GTB):	52	42
Tool Carrier ID (in):	2.875	2.8750
Tool Carrier OD (in):	5	5
Hole Size (in):	8.5	7.875
Casing Size (in):	9.625	9.625
Casing Start Depth (ft):	0	0
Casing End Depth (ft):	3044	3044
Mud Type:	WBM	WBM
Mud Weight (lb/gal):	12.2	12.40
Mud Viscosity:	41	41
KCL Correction Factor:	0.000	0.000
Mud KCL Content (%):	0.0001	0.0001
Comment:	-	-

BitRun:		
Start Depth (ft):		
End Depth (ft):		
Start Date:		
End Date:		
Gamma Scale Factor:		
Survey-to-Bit (PTB):		
Gamma-to-Bit (GTB):		
Tool Carrier ID (in):		
Tool Carrier OD (in):		
Hole Size (in):		
Casing Size (in):		
Casing Start Depth (ft):		
Casing End Depth (ft):		
Mud Type:		
Mud Weight (lb/gal):		
Mud Viscosity:		
KCL Correction Factor:		
Mud KCL Content (%):		
Comment:		

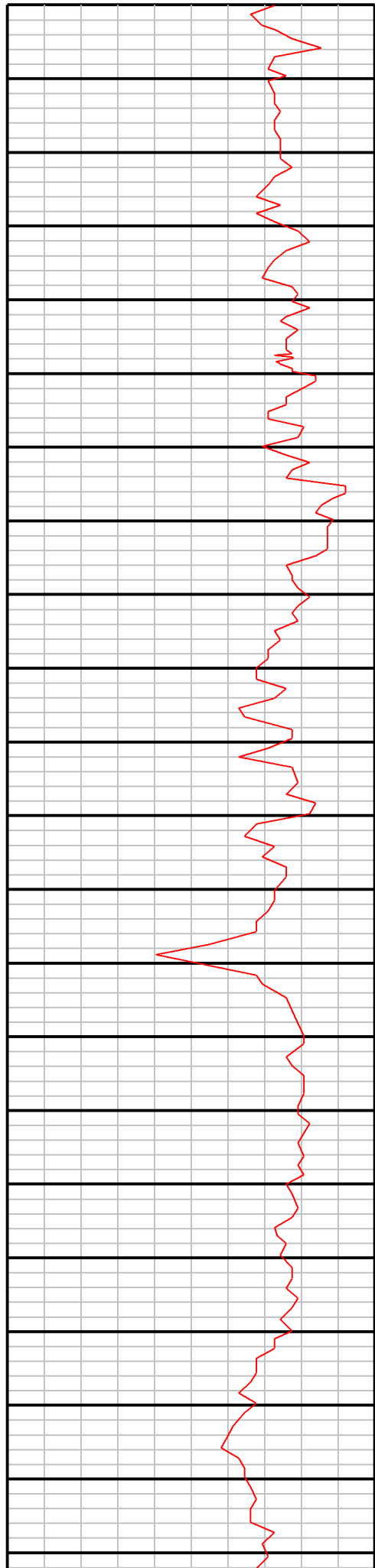


EQT
512418
Doddridge Co.
1130455

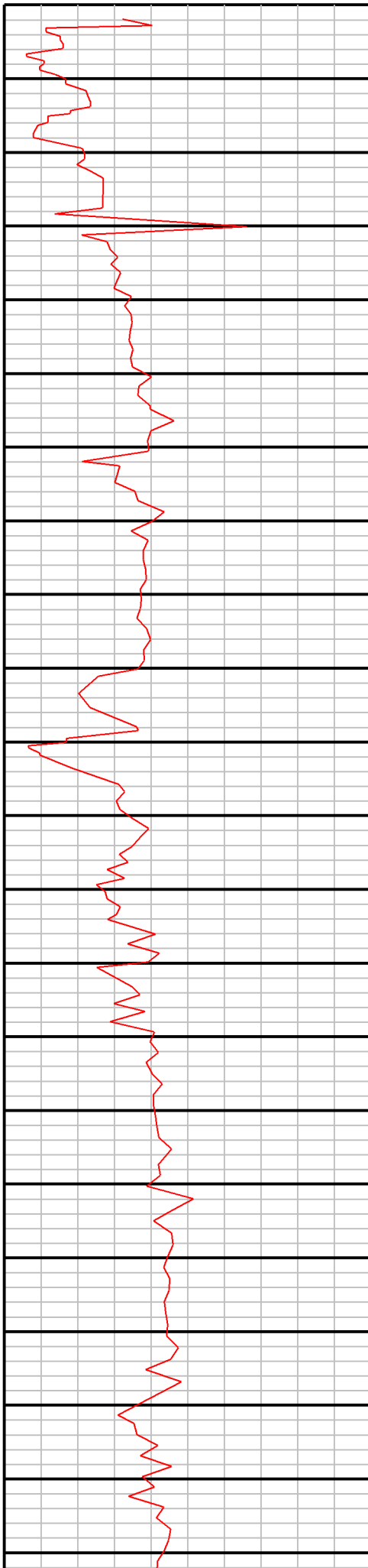
MD
1:240
Feet

0	Gamma (API)	250
250	Gamma (API)	500
500	Gamma (API)	750

0	ROP (ft/hr)	200
200	ROP (ft/hr)	400



6330
6340
6350
6360
6370
6380
6390
6400
6410
6420
6430
6440
6450
6460
6470
6480
6490
6500
6510
6520
6530
6540



MD: 6333
INC: 28.2
AZM: 350.5

MD: 6364
INC: 31.5
AZM: 349.2

MD: 6396
INC: 35
AZM: 347.1

MD: 6428
INC: 38.3
AZM: 346.4

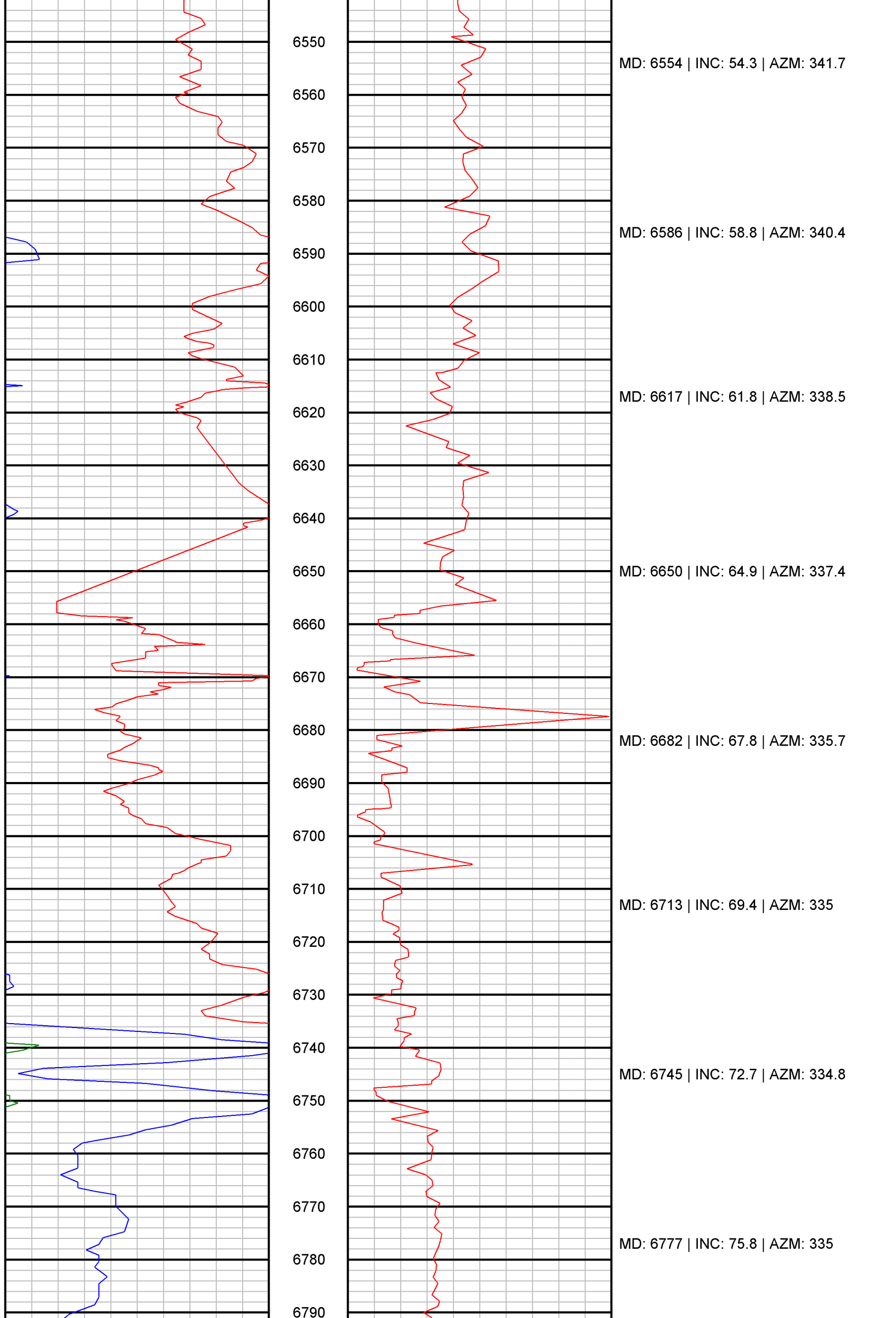
MD: 6459 | INC: 41.8 | AZM: 344.9

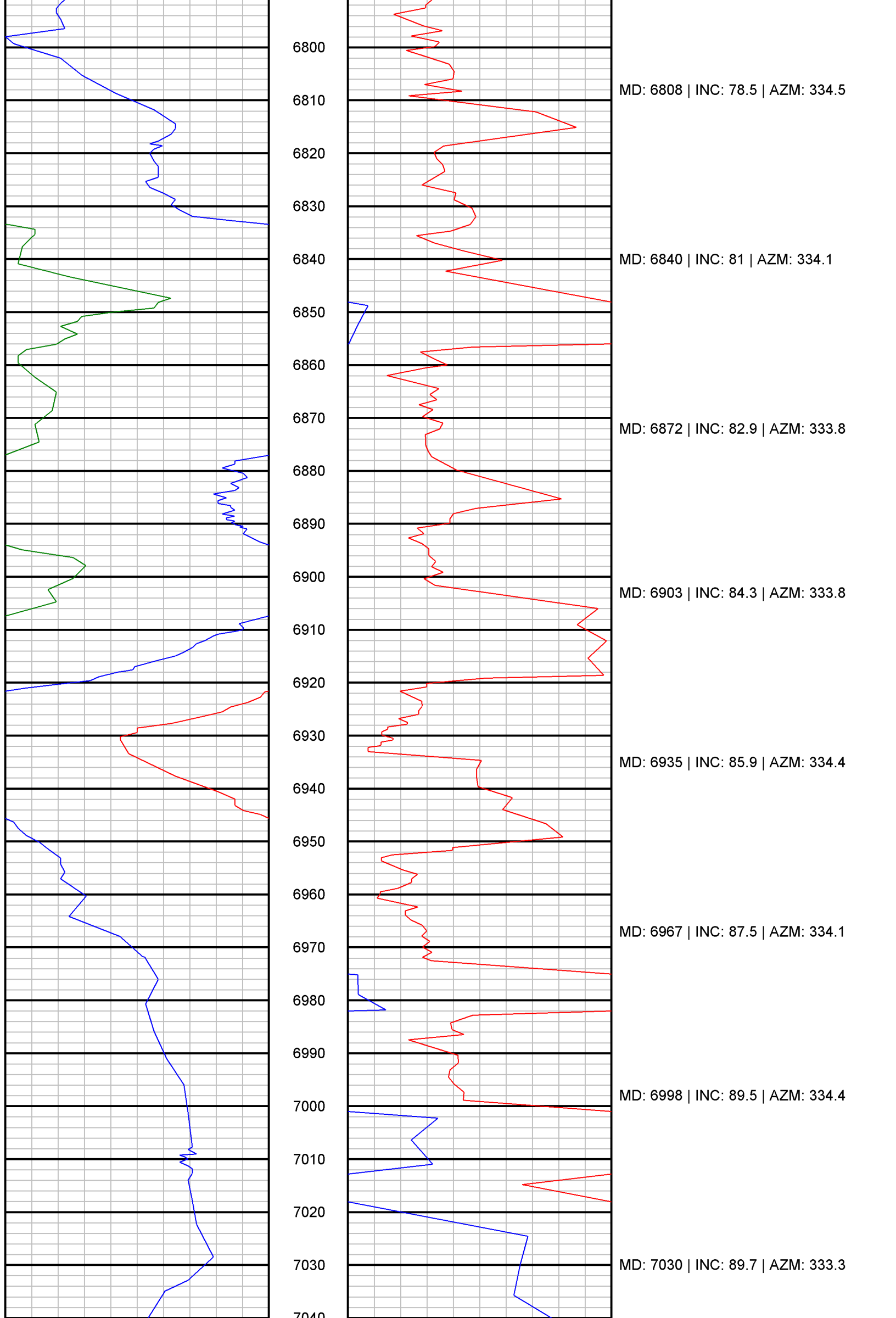
MD: 6491 | INC: 45.9 | AZM: 343.3

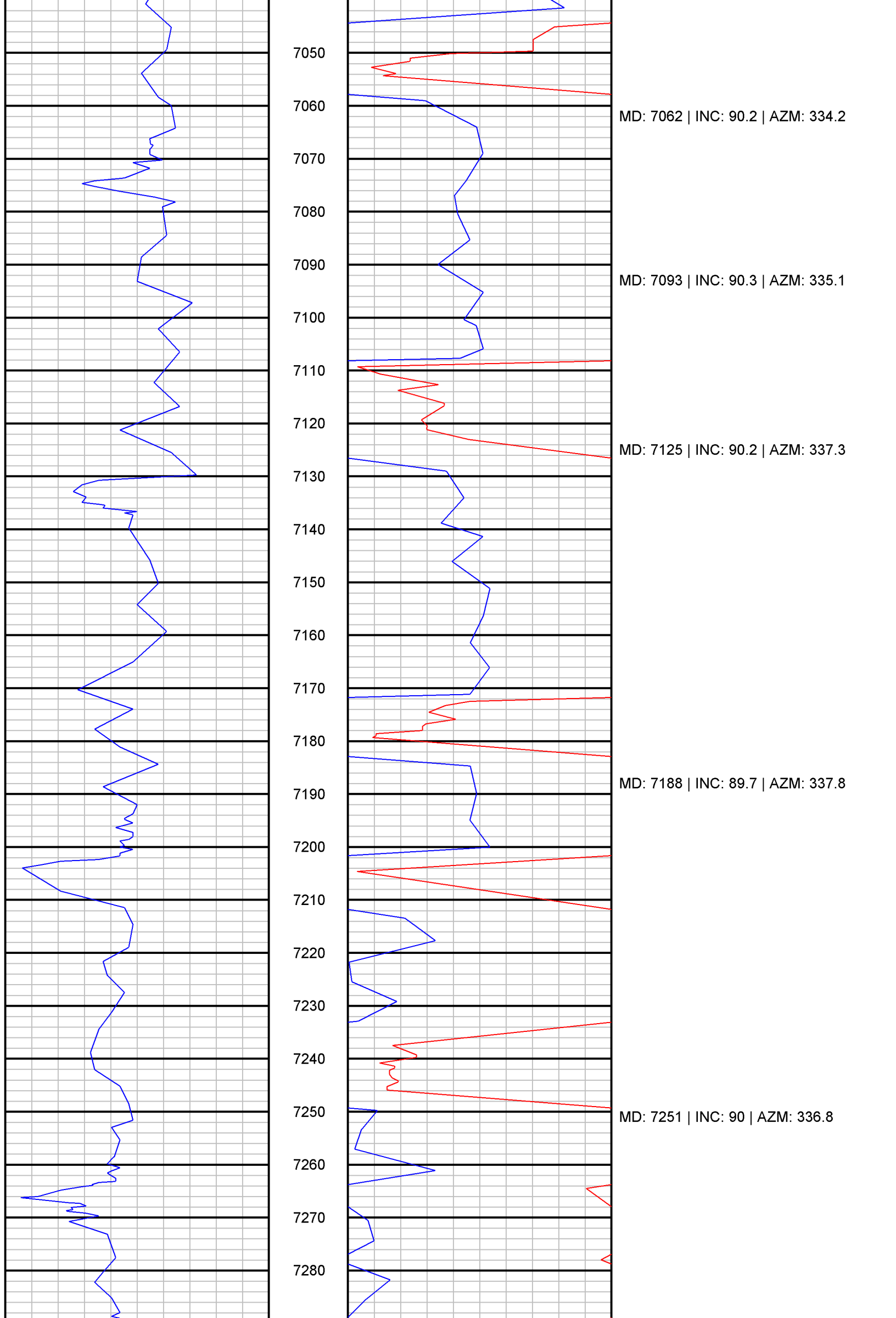
MD: 6523 | INC: 49.7 | AZM: 342.2

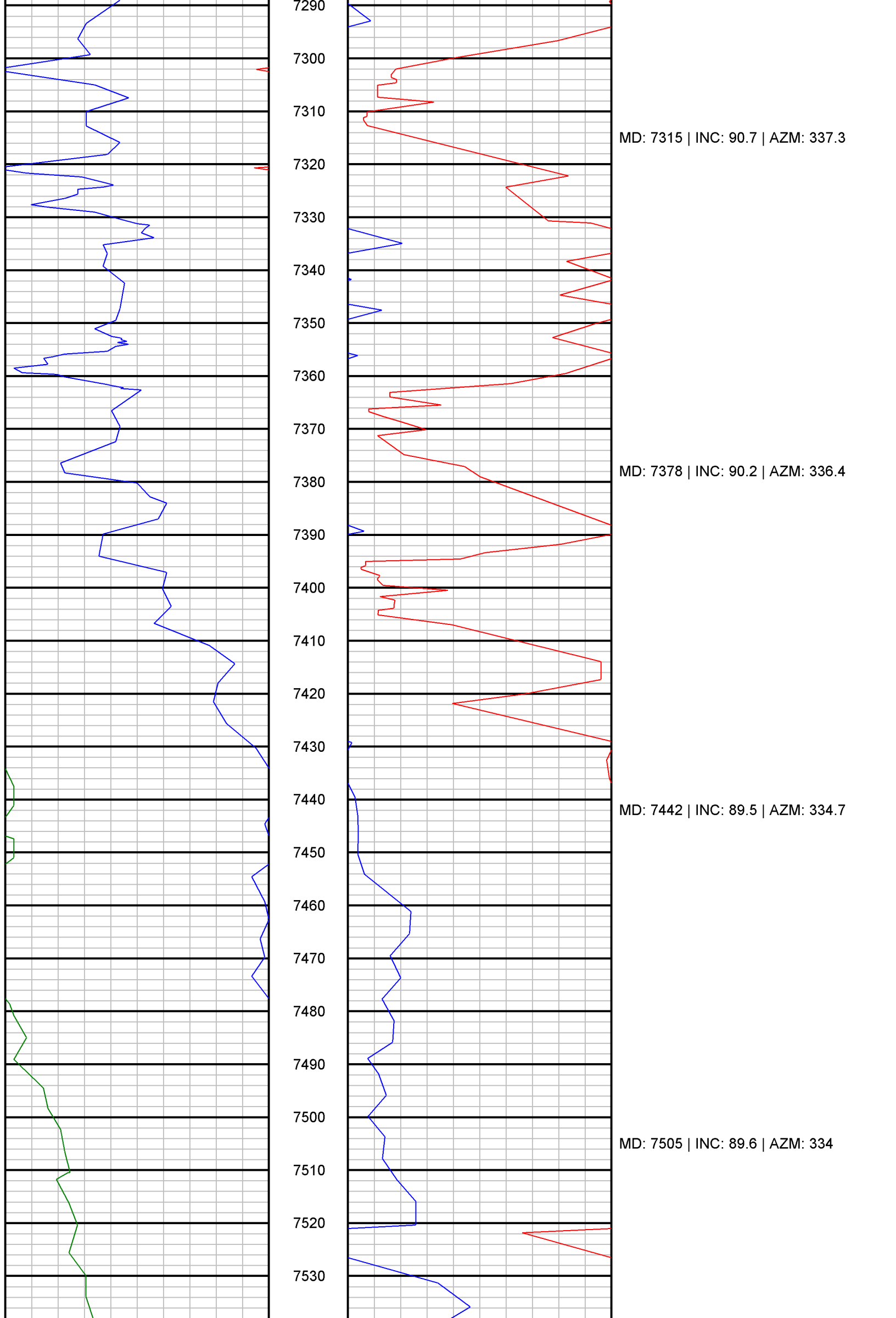


PHOENIX
TECHNOLOGY SERVICES







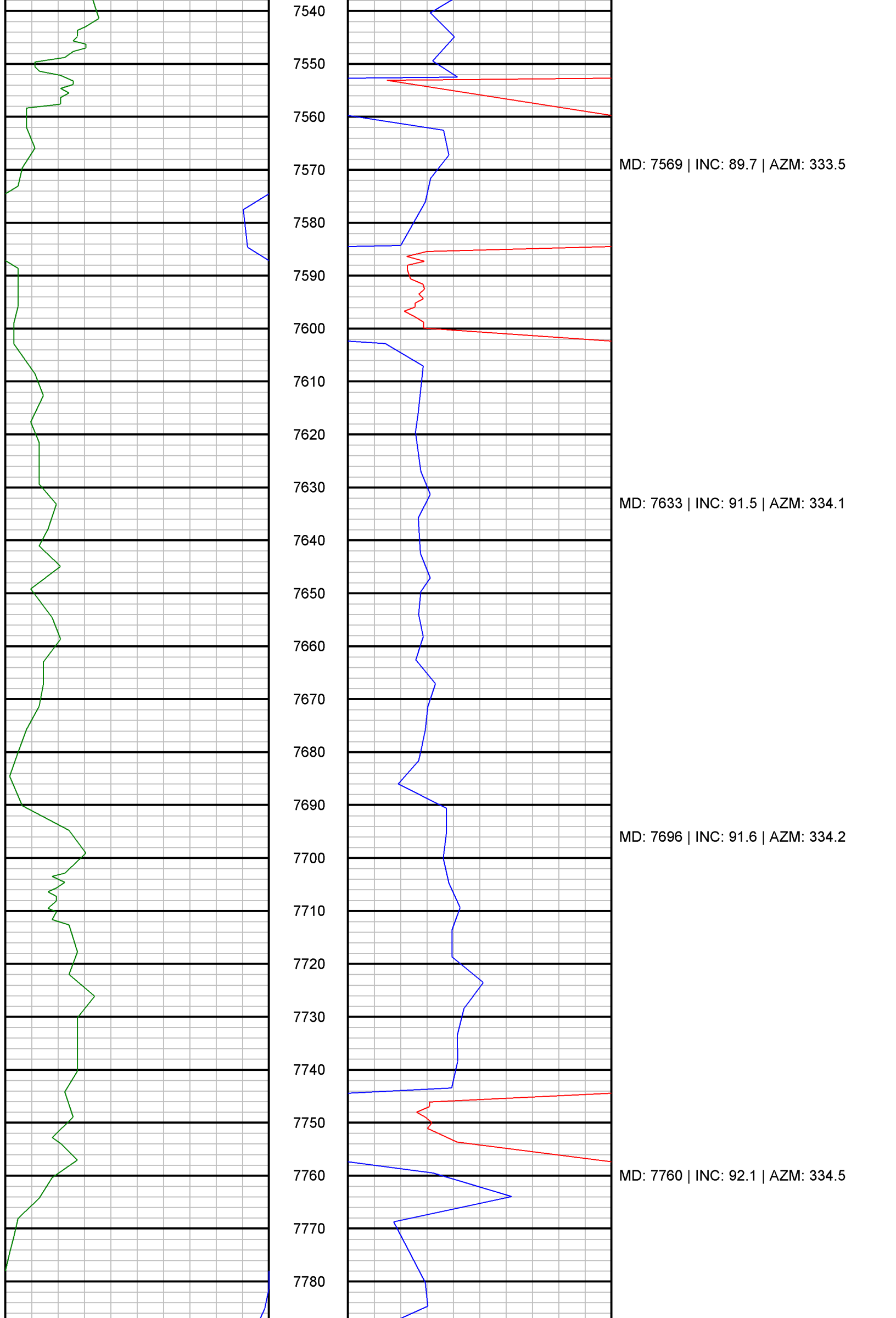


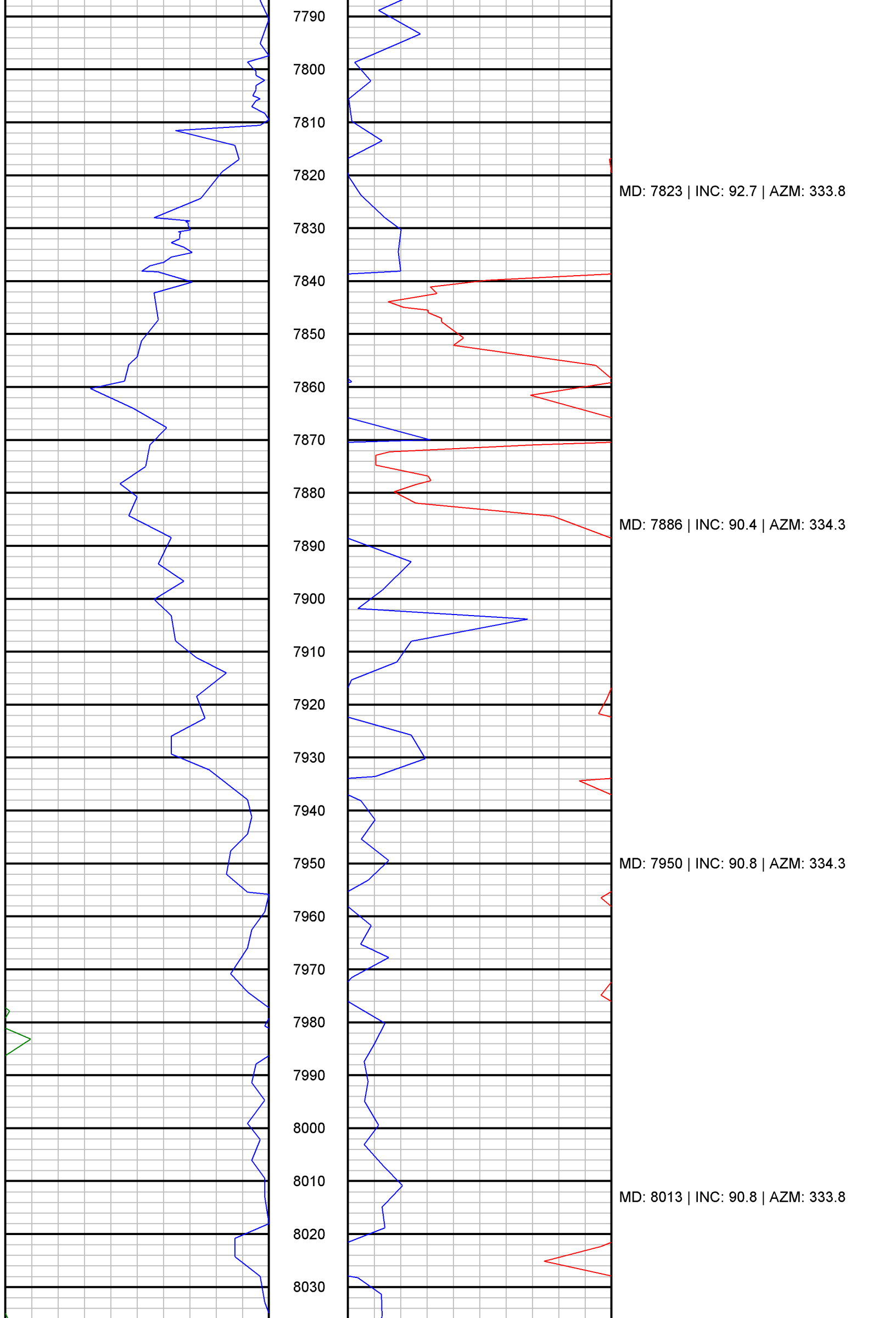
MD: 7315 | INC: 90.7 | AZM: 337.3

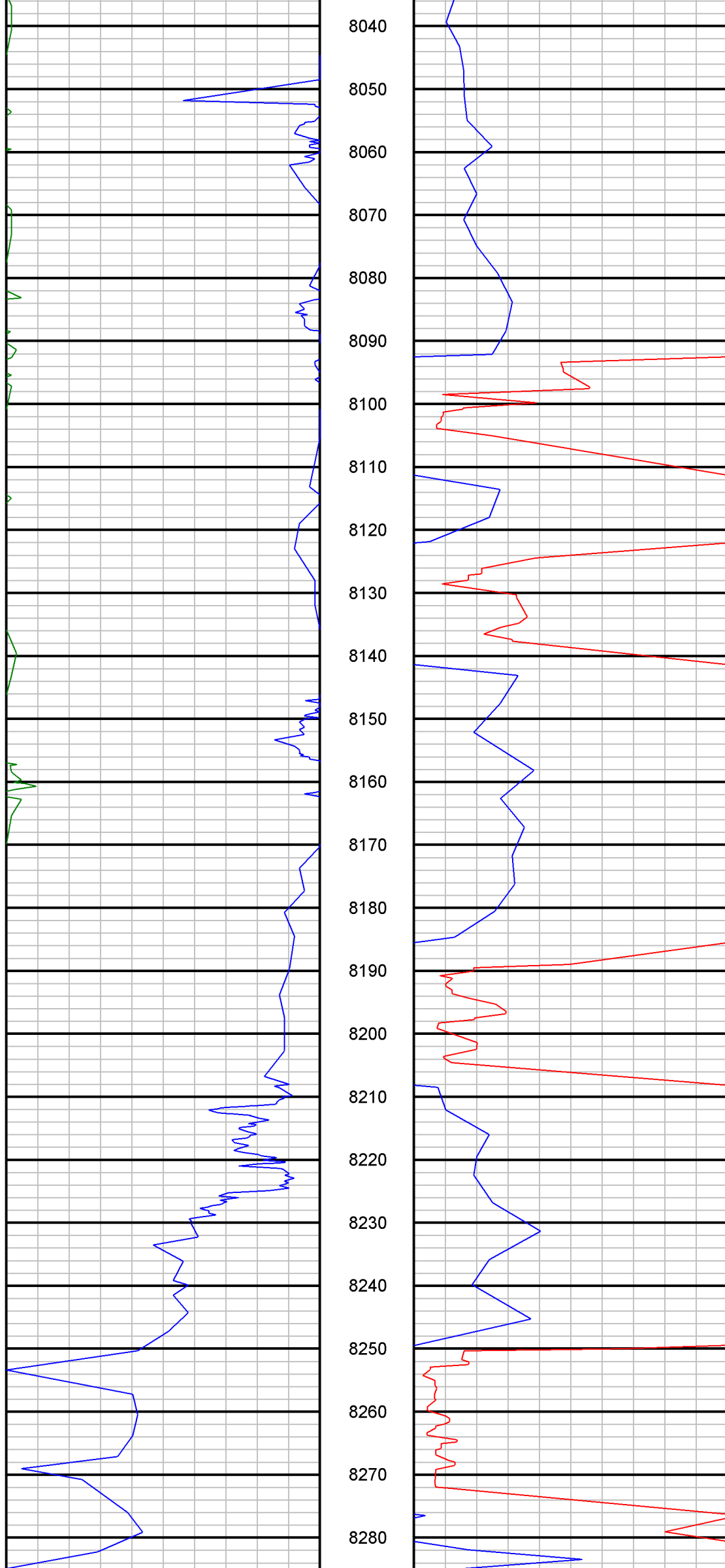
MD: 7378 | INC: 90.2 | AZM: 336.4

MD: 7442 | INC: 89.5 | AZM: 334.7

MD: 7505 | INC: 89.6 | AZM: 334





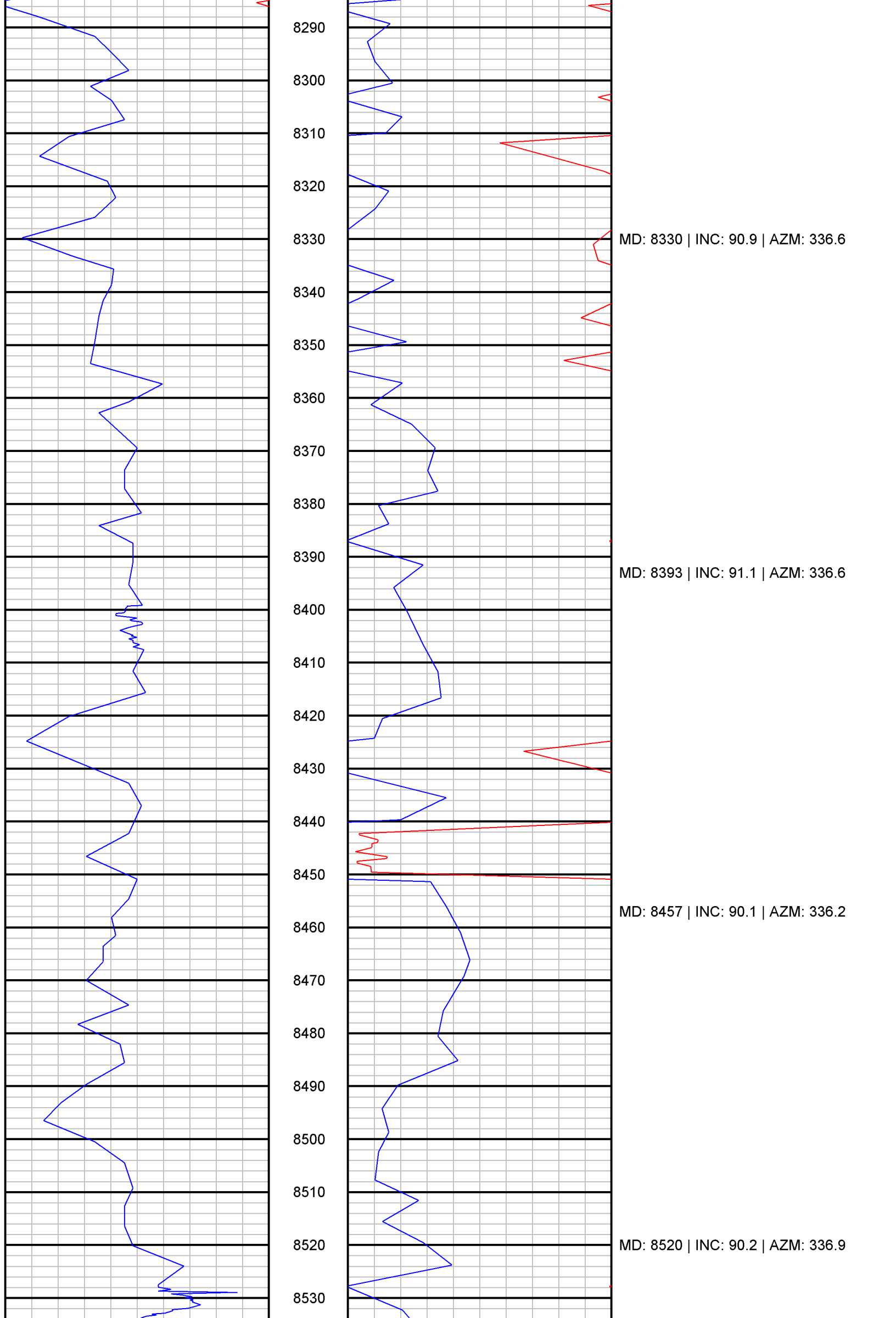


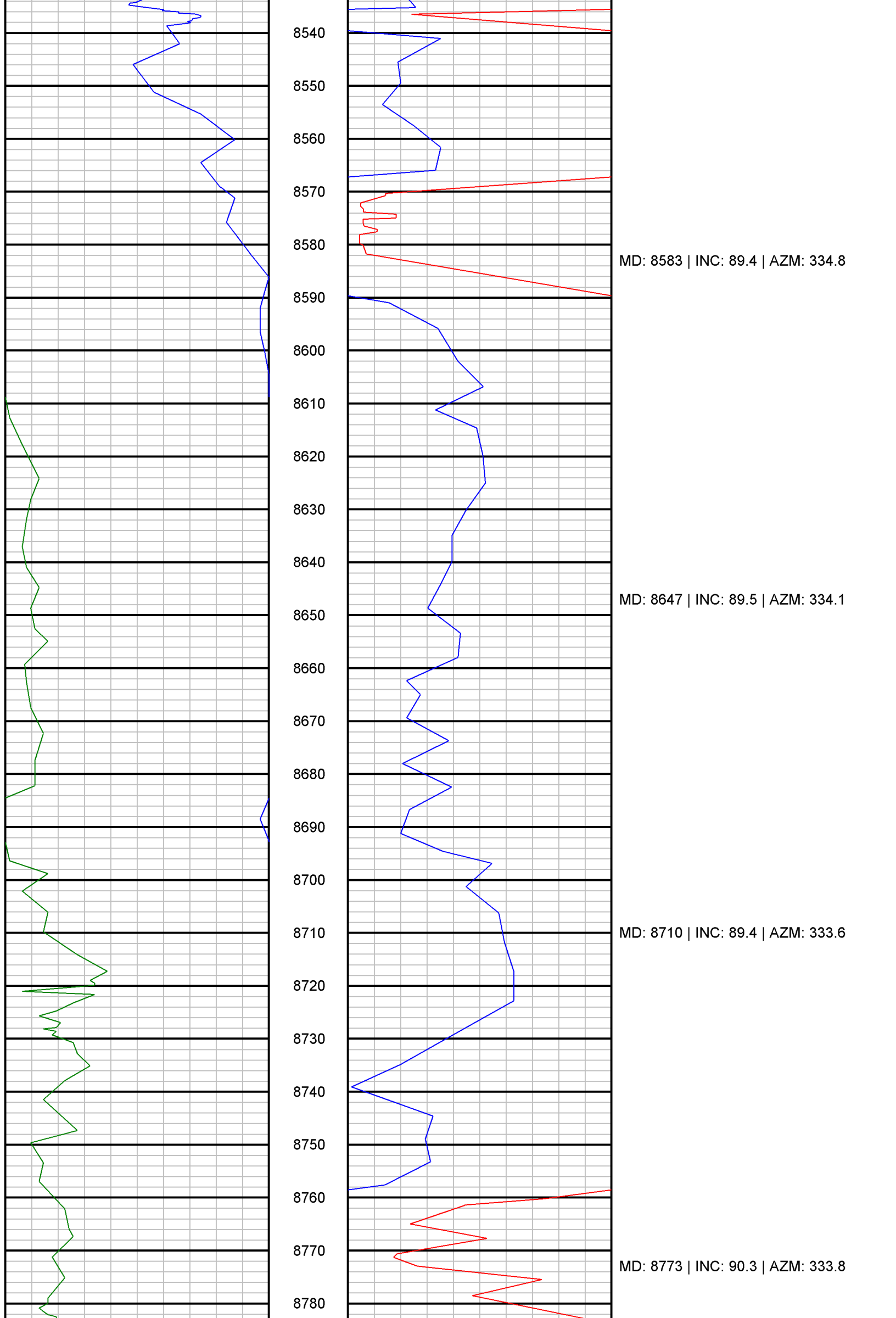
MD: 8077 | INC: 90.9 | AZM: 332.8

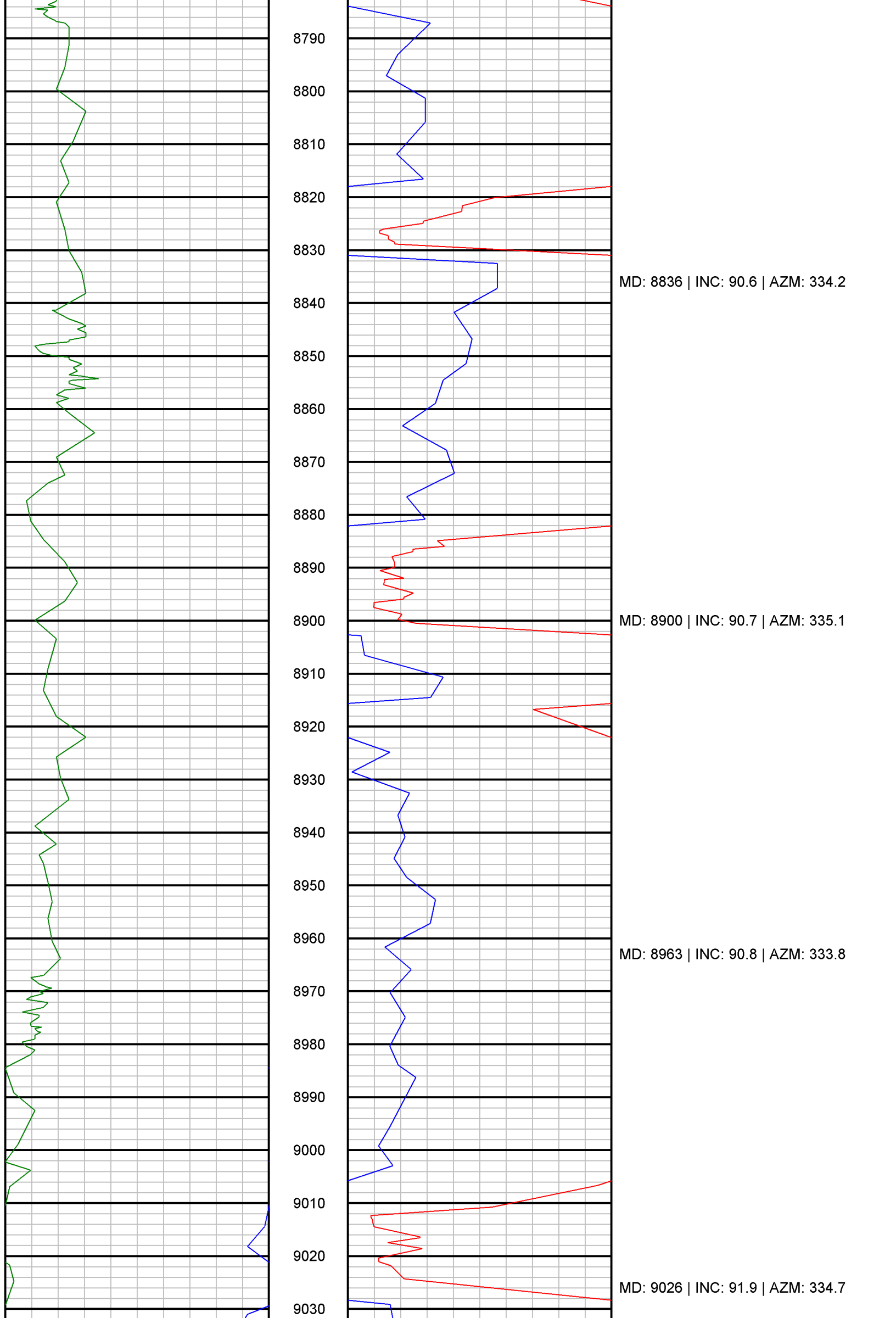
MD: 8140 | INC: 92.2 | AZM: 333.3

MD: 8203 | INC: 92 | AZM: 334.2

MD: 8267 | INC: 90.9 | AZM: 336







8790

8800

8810

8820

8830

8840

8850

8860

8870

8880

8890

8900

8910

8920

8930

8940

8950

8960

8970

8980

8990

9000

9010

9020

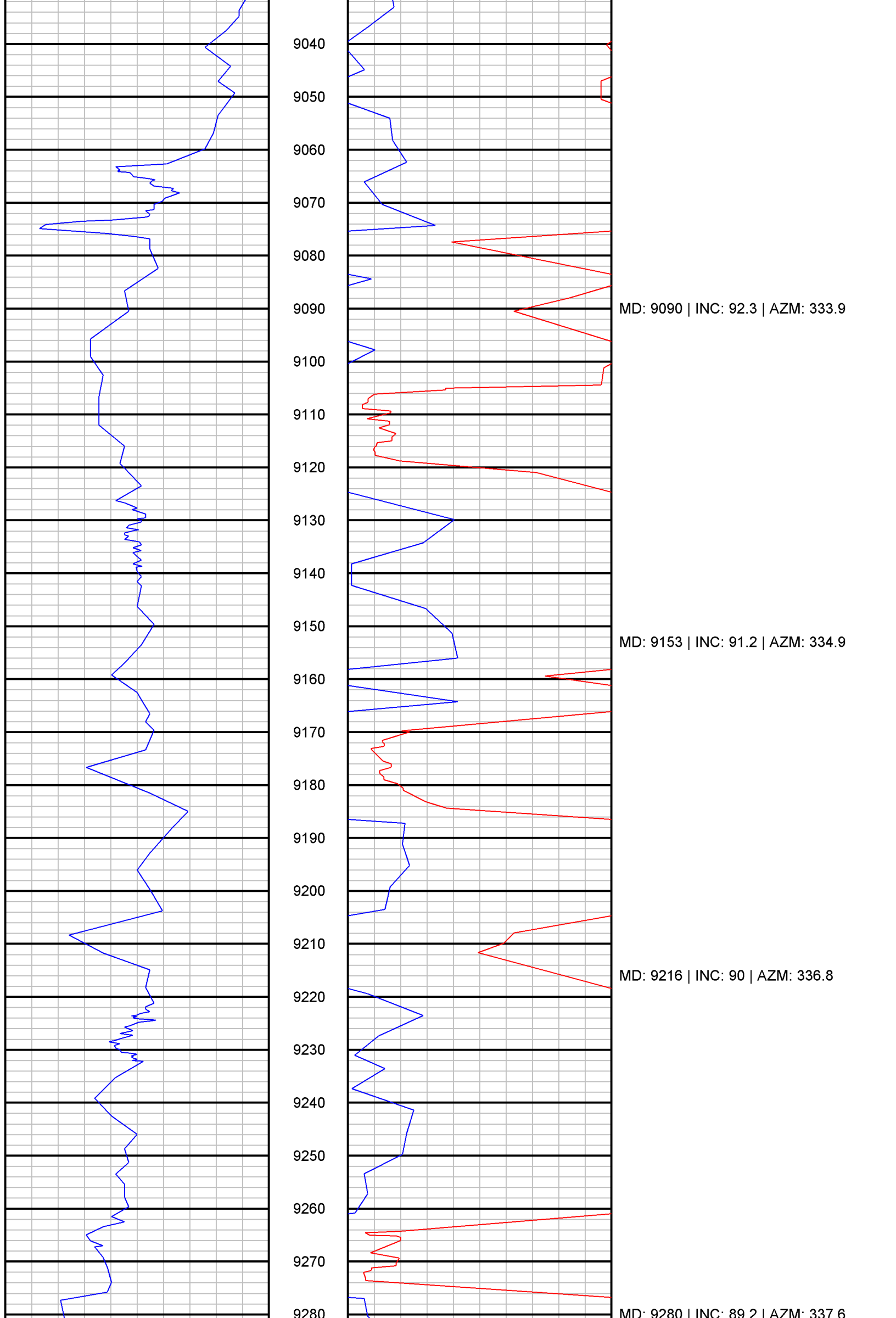
9030

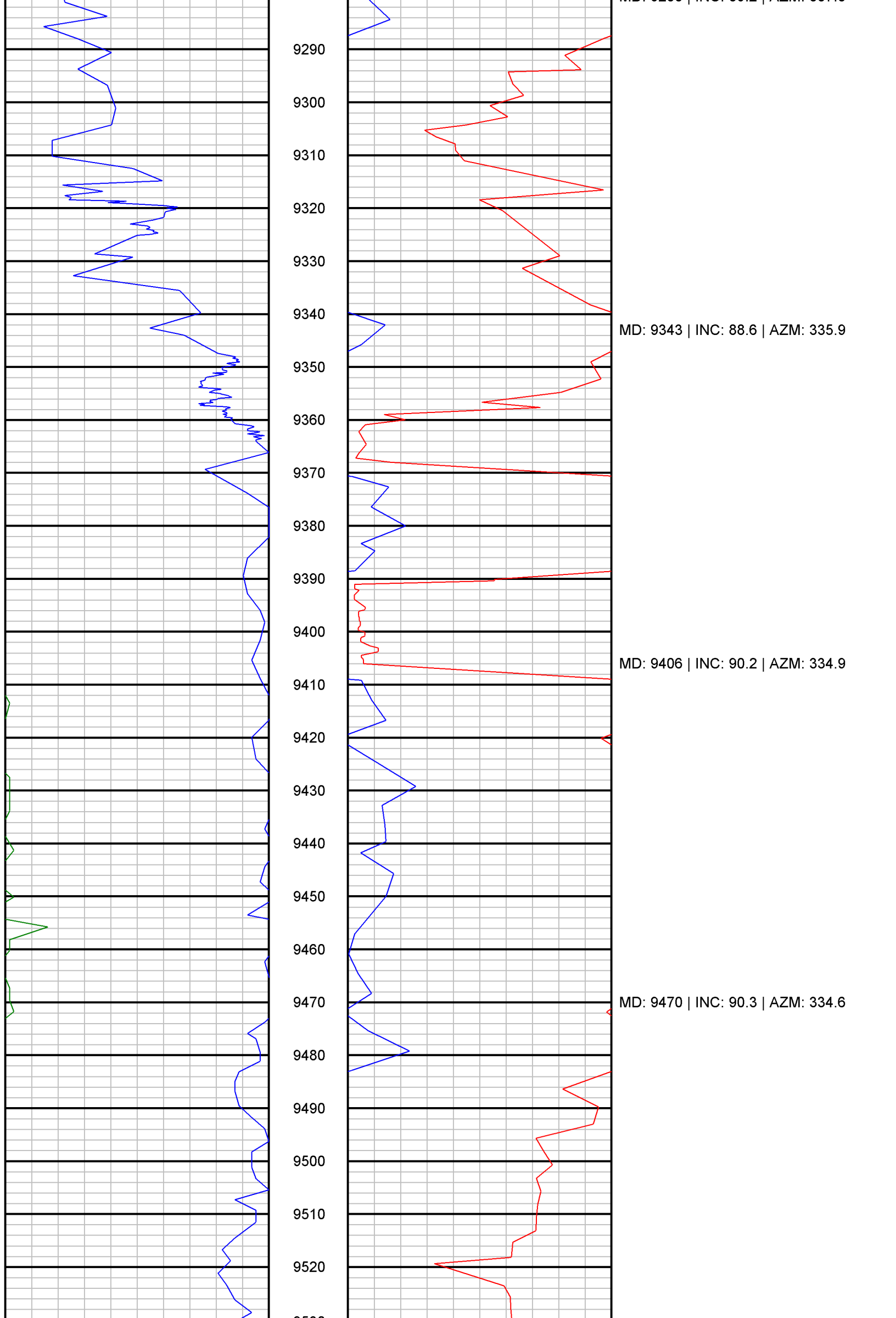
MD: 8836 | INC: 90.6 | AZM: 334.2

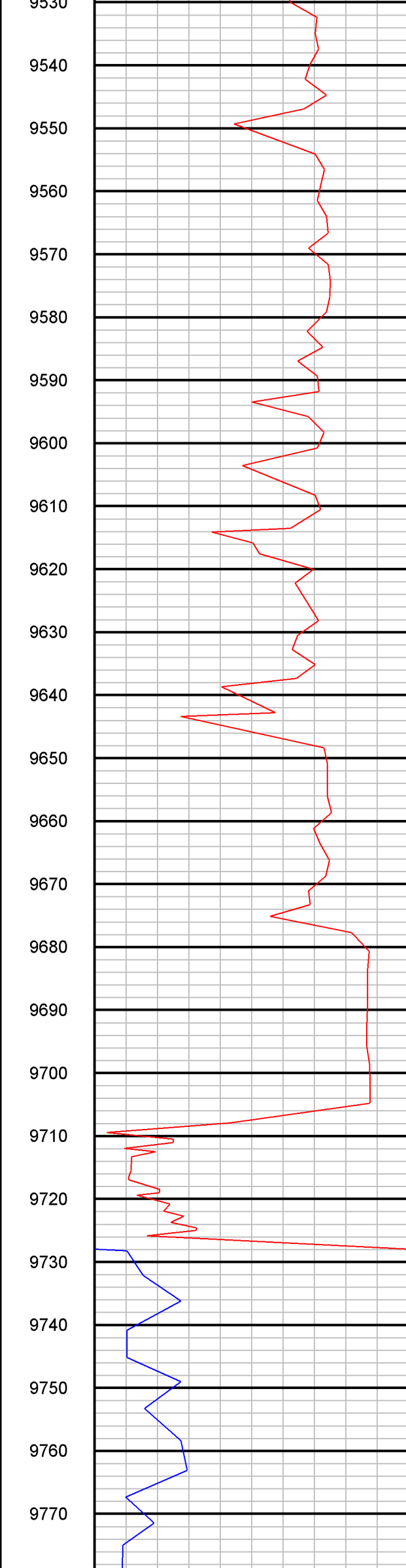
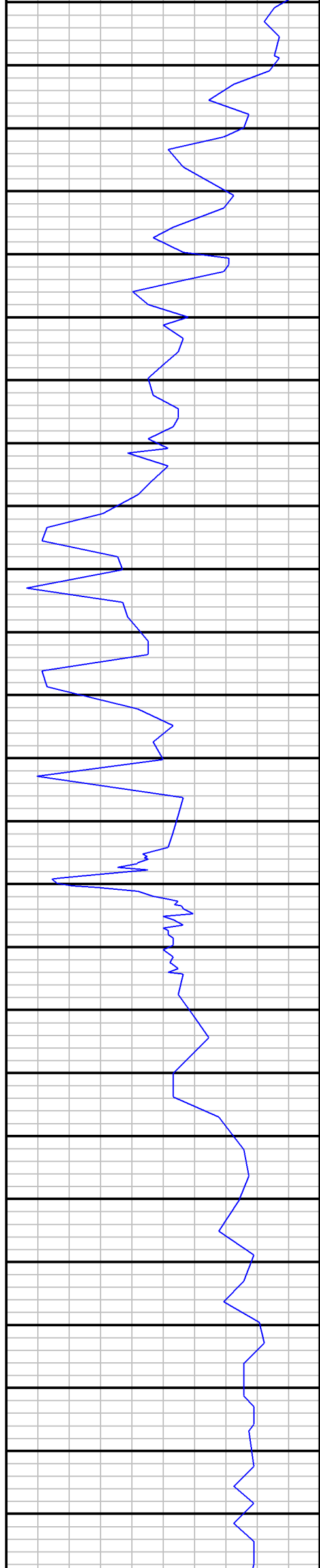
MD: 8900 | INC: 90.7 | AZM: 335.1

MD: 8963 | INC: 90.8 | AZM: 333.8

MD: 9026 | INC: 91.9 | AZM: 334.7







MD: 9533 | INC: 90.4 | AZM: 333.7

MD: 9596 | INC: 90.4 | AZM: 332.9

MD: 9660 | INC: 90.9 | AZM: 333

MD: 9723 | INC: 90.1 | AZM: 335

