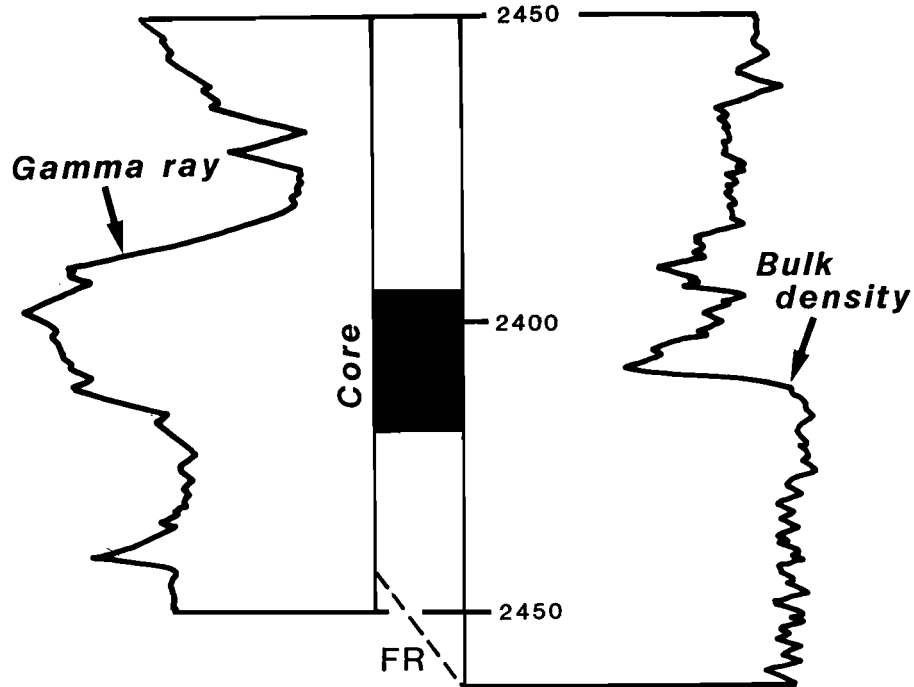
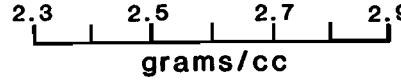
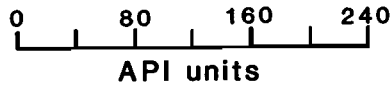


Map Location No. 23

Permit KAN-2788 *dryhole*
 Columbia Gas Transmission Co. No. 20472 Tomkins
 Jefferson Dist. *Burdette - St. Albans field*
 Kanawha Co., W. Va. *dryhole*



MAP NO. 23 — NOTABLE FEATURES
 Grain size of sandstone is variable ranging from very fine to fine and represents two coarsening upward cycles. Siltstone in the lower part of the core is well laminated and has some bioturbation, whereas crossbedding, hummocky crossbedding, lamination, some massive beds occur in sandstone in upper part of core. Pyrite abundant in lower siltstone.

