

COPY

7436 - 7442

Sand, gy., very fine, quartzitic.

7442 - 7443

Sand, very fine, quartzitic.

7443 - 7444

Shale, lt. to med. gy.

7444 - 7446

Sha., lt. to md. gy. & gy. quartzite

7446 - 7448

Gy., quartzitic and ver fine quartzitic sand with interbedded shales.

7448 - 7454

Sand, very fine, quartzitic & gy. quartzitic with some interbedded gy. & dk. gy. shale.

7454 - 7457

Sand, very fine, quartzitic.

7457 - 7458

Sand, very fine, quartzitic to med. & coarse grains, conglomeratic.

7458 - 7460

Sand, gy., very fine, quartzitic.

7460 - 7462

Sand, gy., very fine, quartzitic.

7462 - 7464

Sand, med. to coarse, conglomeratic, sub-rd. to well rounded grains, some thin gy. to dk. gy., interbedded shales.

7464 - 7466

Sand, very fine quartzitic, red, lt. green & purple with thin conglomeratic sand lenses.

7466 - 7472

Sand, med. to coarse, conglomeratic, sub-angular to well rounded grains, x-bedded.

7472 - 7475

(3' missing) Sand, very fine quartzitic gy.

7475 - 7481

Sand, very fine, quartzitic becoming coarse with ang. to sub-rd. grains.

7481 - 7482

Sand, med. to coarse, ang. to sub-rd. & rounded grains siliceous cement.

7482 - 7485

Sand, very fine, quartzitic.

7485 - 7489

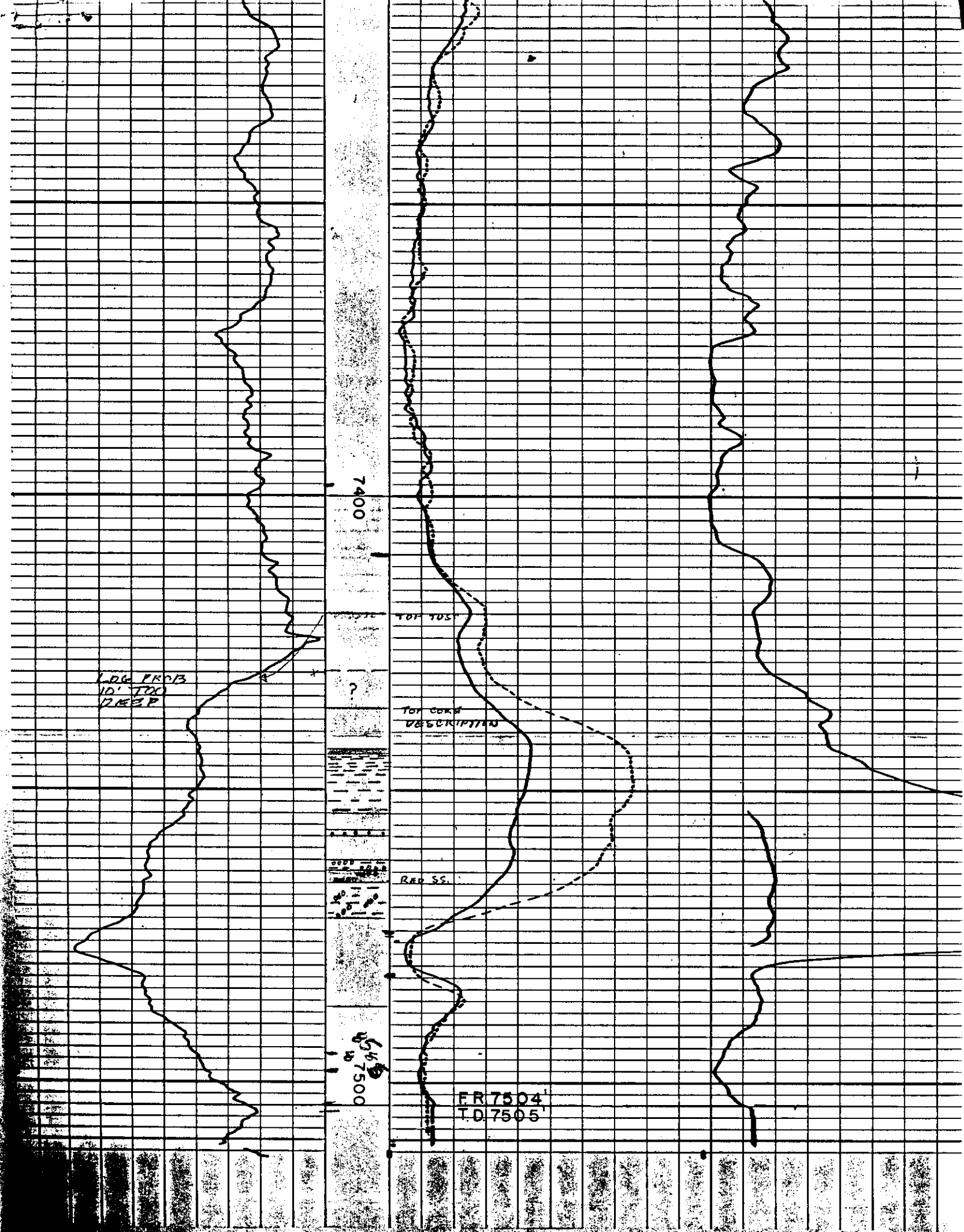
Shale, med. to dk. gy., argill.

7489 - 7490

Slt. st., lt. gy., somewhat sdy.

7490 - 7499

Shale, med. to dk. gy., argillaceous, with interbedded siltstones and red shale at 7499'



UNITED FUEL GAS COMPANY
 TRADER NO. 8000-T
 CLENDENIN
 CLAY COUNTY, WEST VIRGINIA - 513