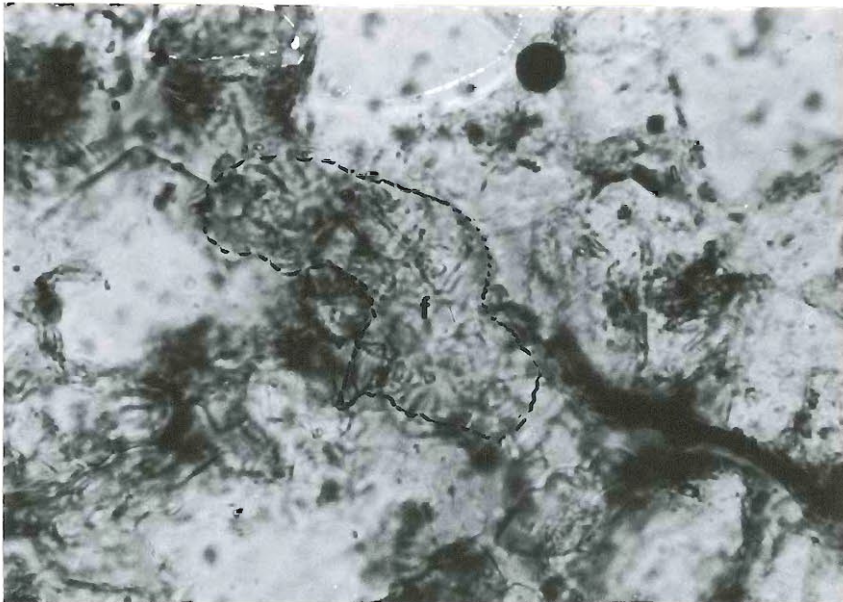


API# 4700100502

Figure 12. Secondary feldspar overgrowth, well #11199, depth 4288 feet. Detrital feldspar grain denoted by f, pore space labelled p. Note the euhedral shape of the secondary overgrowth. Plane light. Magnification 415X.



API# 4704101704

Figure 13. Feldspar solution, well #11192, depth 4371 feet, the original grain is outlined and denoted by f. Note the jagged remnants of the original grain. Light gray grains are quartz and dark material is argillaceous material. Plane light. Magnification 475X.