

4) Core description for well 10973 (Bar. 396)

DEPTH Feet	SAND- STONE	SILTSTONE	SHALE	Structureless Parallel laminated X-streiffoid Homogenized Horizontal burrow Vertical burrow Diagonal burrow Branching burrow Flute cast Groove cast Pond mark L badge mark Flame structure Shale stringer Cut & fill Stickensides Organics Pyrite Stunning Clast Brachiopod & Nautiloids Bitumen Chondrites burrow
3685			No samples	
			↓	
			13 shale-silt beds	
			↑	
			21 shale-silt beds	
			↑	
			18 shale-silt beds	
			↑	
			18 shale-silt beds	
			↑	
			17 shale-silt beds	
3690			↑	

DEPTH SAND-
Feet | STONE | SILTSTONE | SHALE

3690

16 shale-silt
beds

15 shale-silt
beds

15 shale-silt
beds

3696

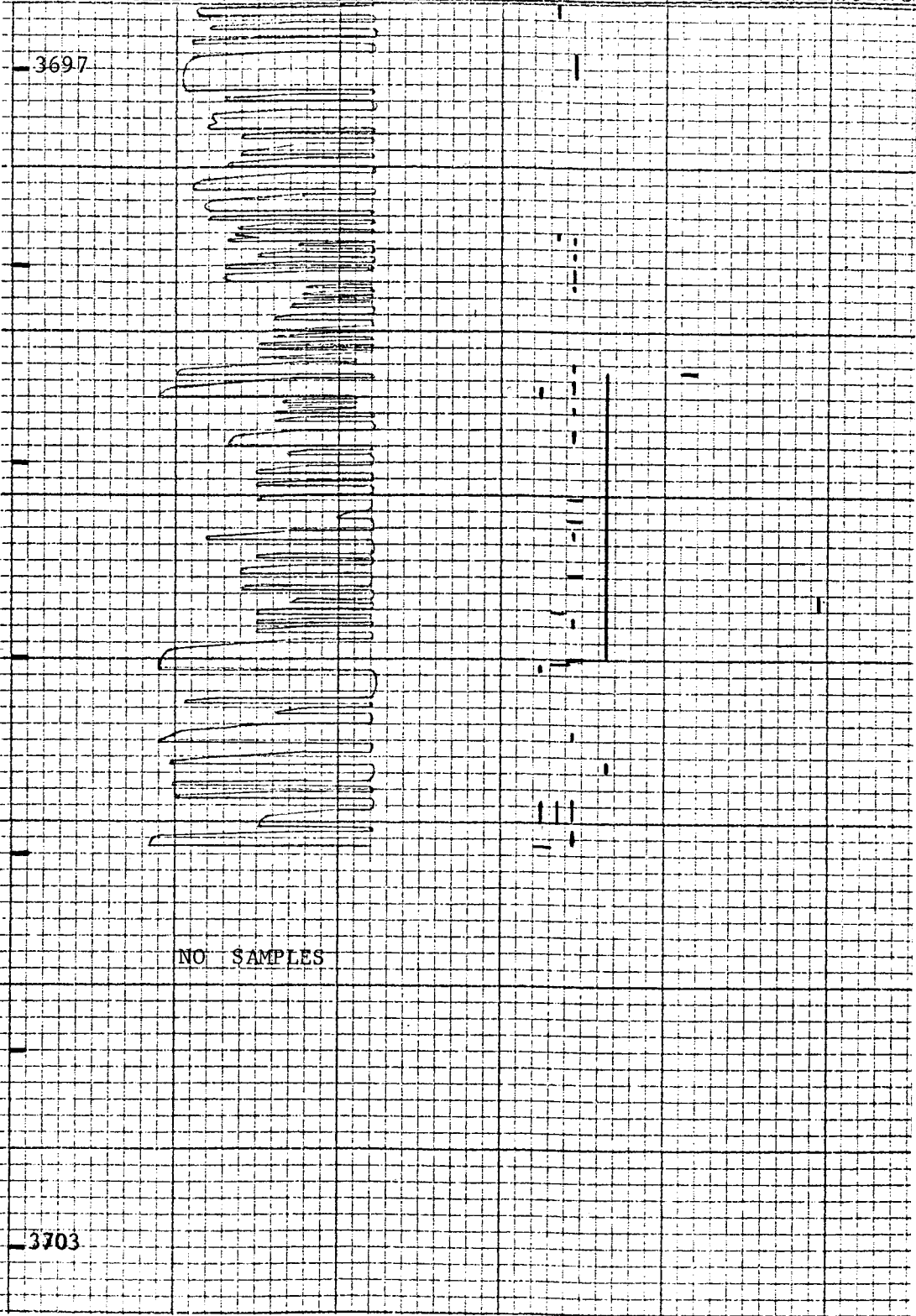
- Structureless
- Parallel laminae
- X-strat (fol)
- Horizontal
- Vertical burrow
- Diagonal burrow
- Branching burrow
- Flute cast
- Clay cast
- Foot mark
- Leaf mark
- Small stringer
- Clay fill
- Stictonolites
- Oolites
- Pyrite
- Sphrit
- Clay
- Brachiopod & Nautiloids
- Bryozoa
- Chondrites

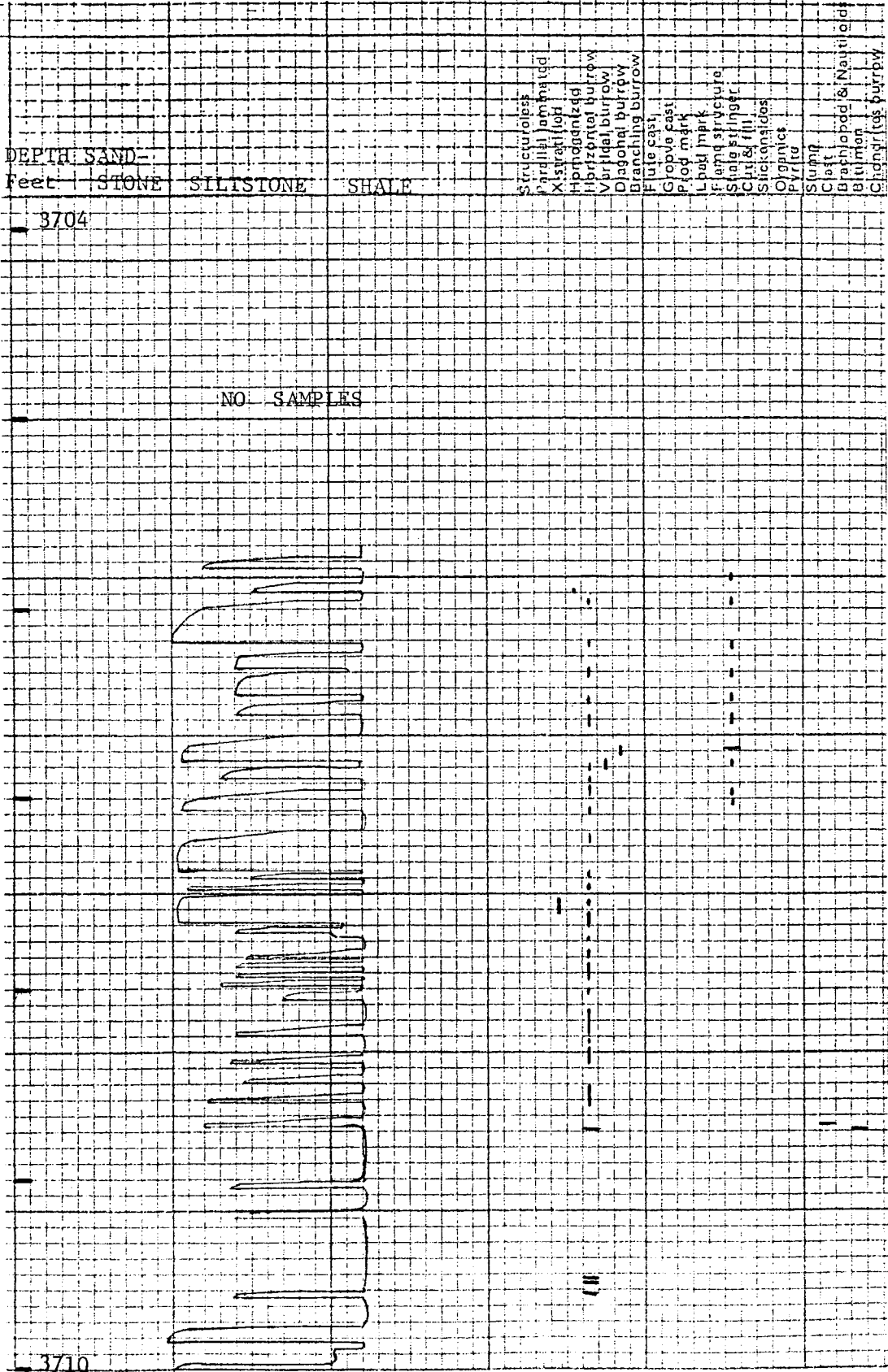
B

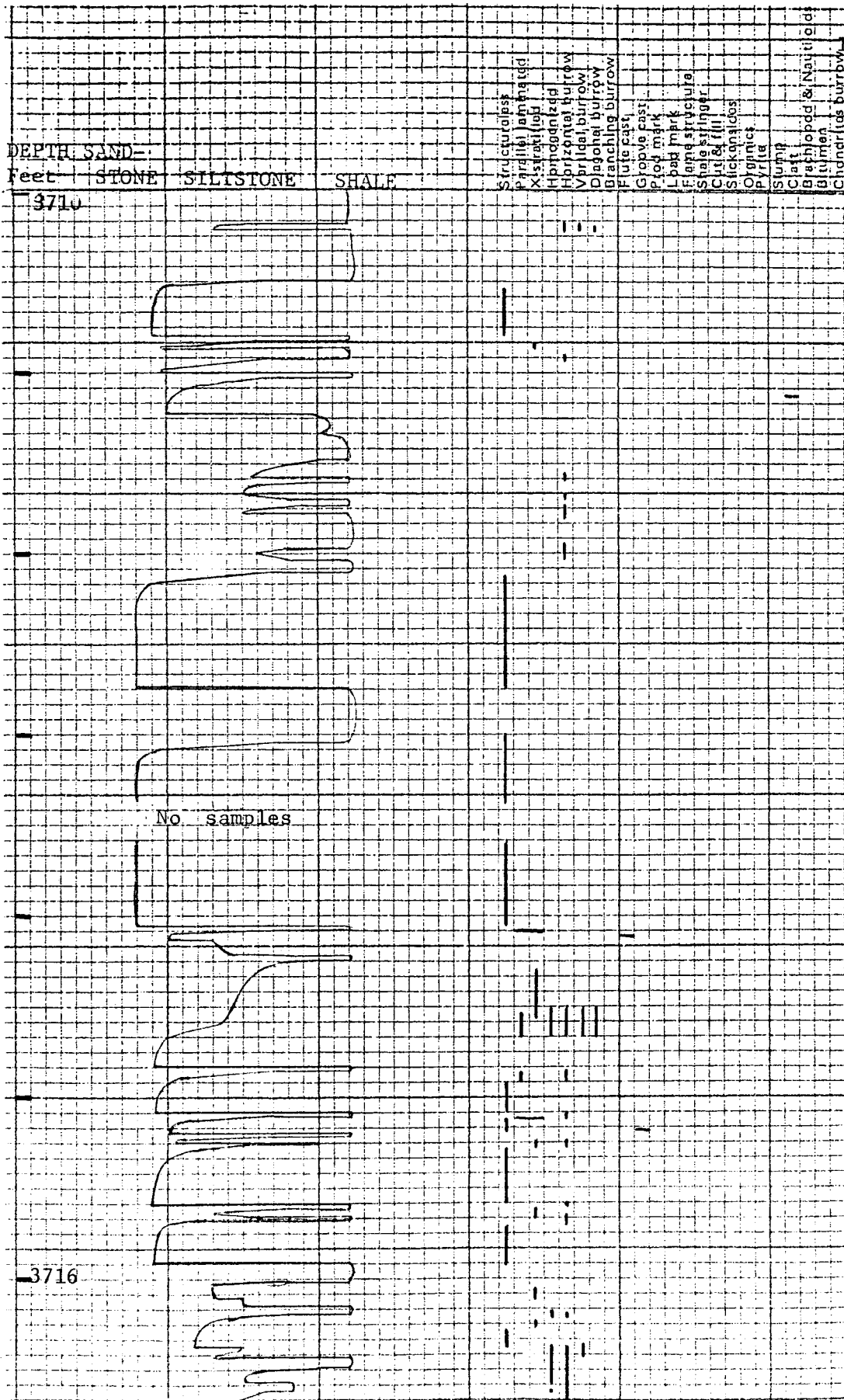
V

C

DEPTH SAND-
Feet: STONE SILTSTONE SHALE





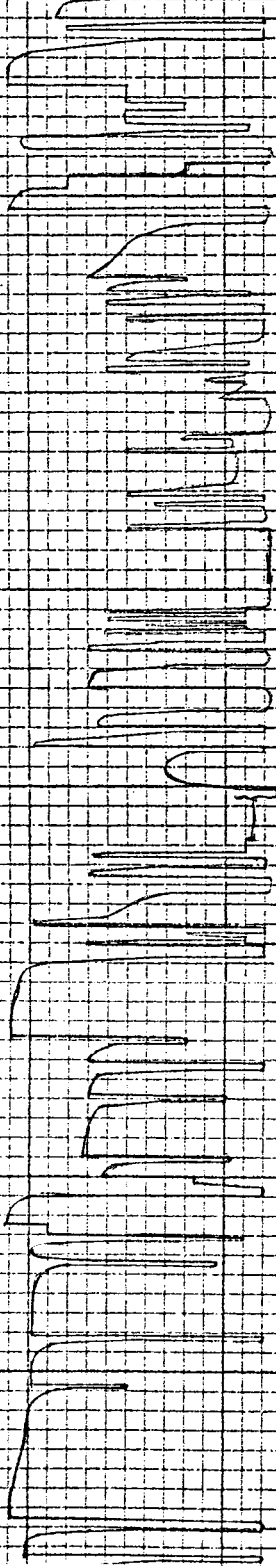


DEPTH SAND-

Feet | STONE SILTSTONE SHALE

3717

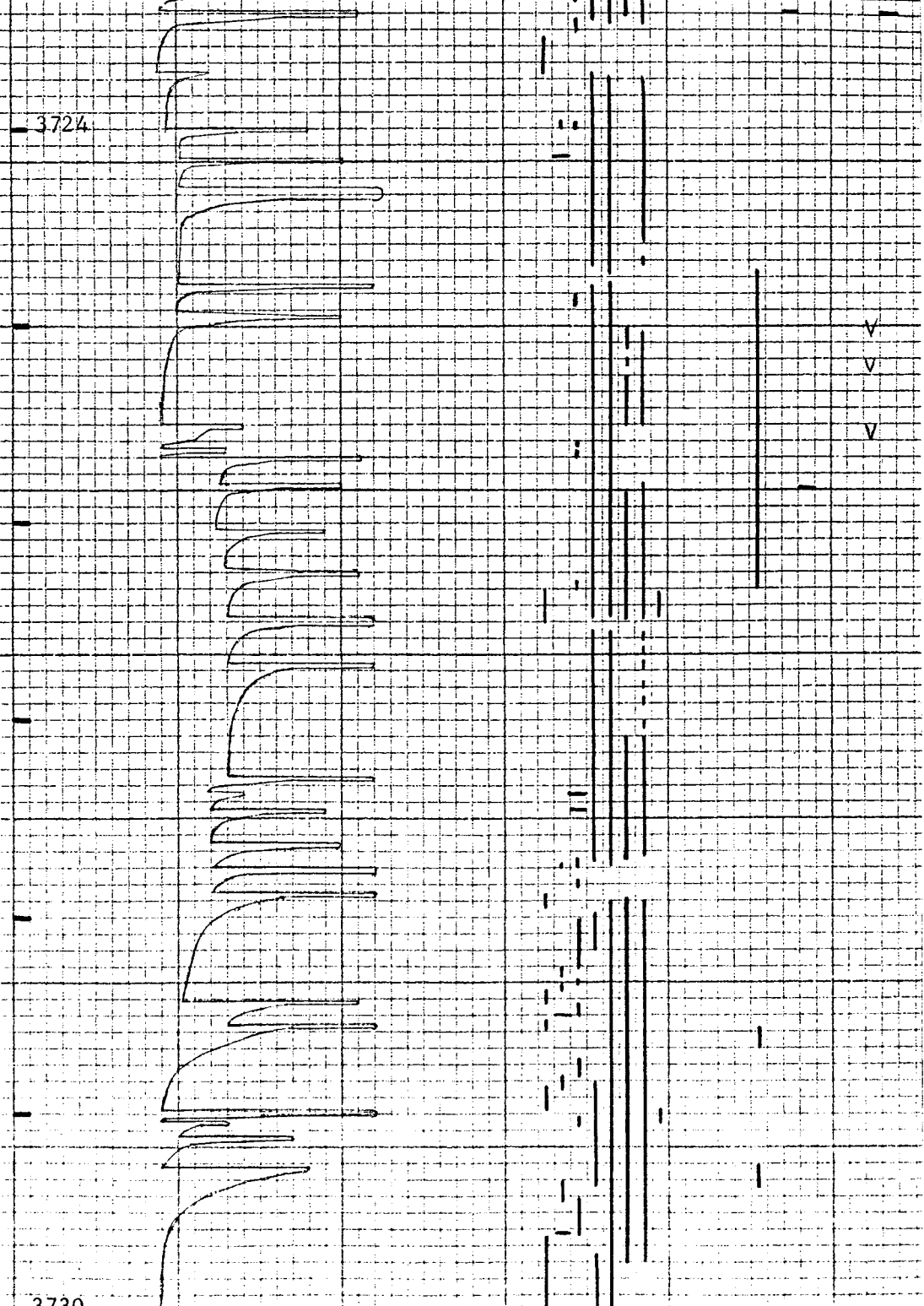
3723



- Structureless
- Radial laminated
- X-spect top
- Horizontal burrow
- Vertical burrow
- Diagonal burrow
- Branching burrow
- Flute cast
- Groove cast
- Rod mark
- Leaf mark
- Flame structure
- Shale stringer
- Dust & fill
- Slickensides
- Organics
- Pyrite
- Stump
- Cast
- Crinoid & Nautilus
- Bitumen
- Cylindrical burrow

DEPTH SAND=

Feet STONE SILTSTONE SHALE



DEPTH SAND-
Feet

STONE SILTSTONE SHALE

3730

3735

- Structural esp
- Parallel laminae
- Xistrolite
- Homogenized
- Horizontal burrow
- Vertical burrow
- Diagonal burrow
- Branching burrow
- Flute cast
- Groove cast
- Pod mark
- Pod mark
- Pod structure
- Shale stringer
- Clit & fill
- Slickensides
- Organic
- Pyrite
- Slump
- Clast
- Branchiopod & Nautiloid
- Bituminous
- Chonetes burrow