

West

East

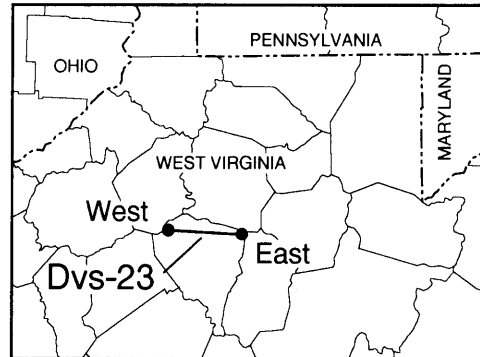
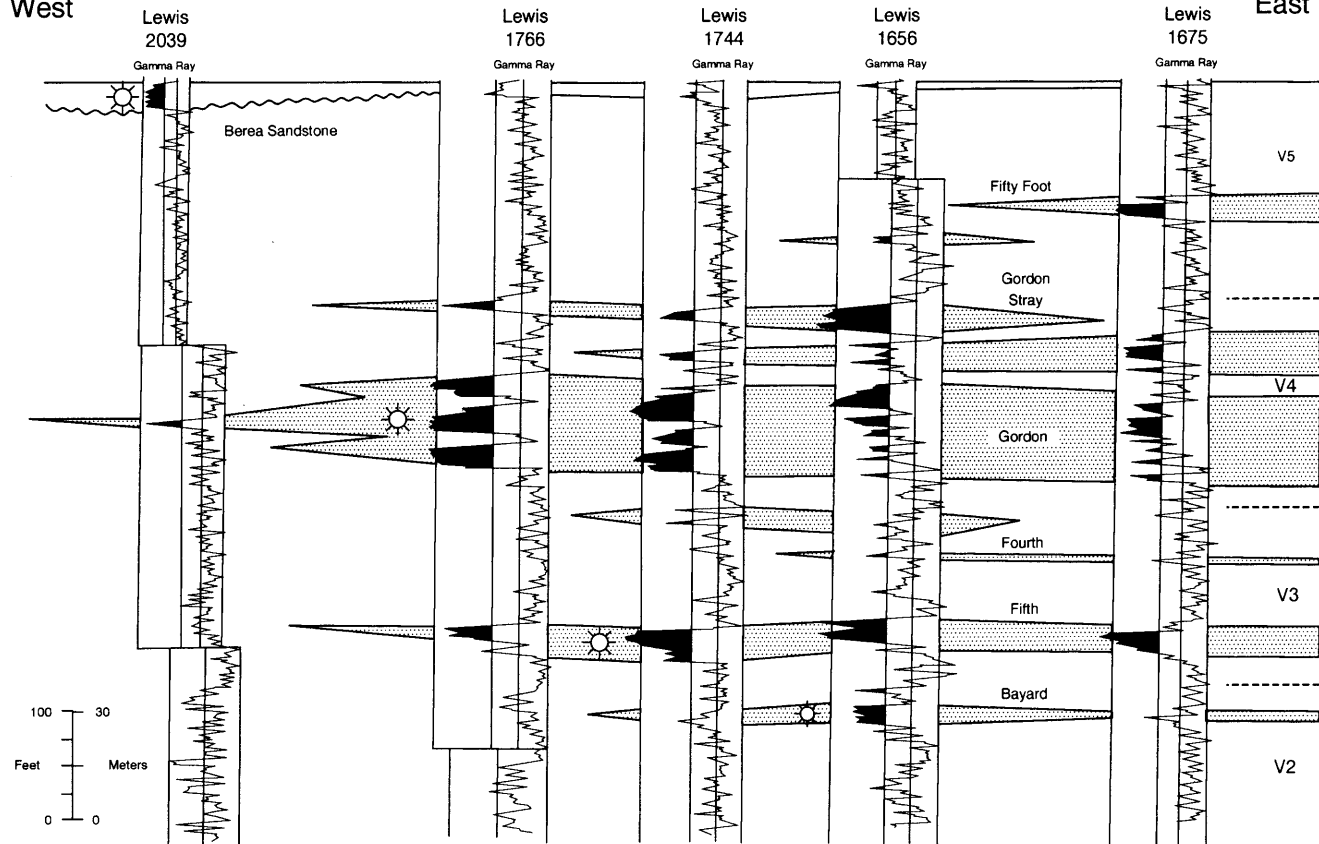


Figure Dvs-23. Stratigraphic cross section across the Weston-Jane Lew and Murphy Creek fields, north-central West Virginia, showing the relationship of the Bayard sandstone (upper V-2) to the main field pays (Fifth/V-3 and Gordon/V-4). Isolith maps of the overlying units exhibit north-south trends, in marked contrast with the geometry of this unit. Strike-trending units within the Bayard interval are located well to the east, suggesting that this unit was deposited offshore. Datum is the top of Berea Sandstone.