

New Location...   
 Drill Deeper.....   
 Abandonment.....

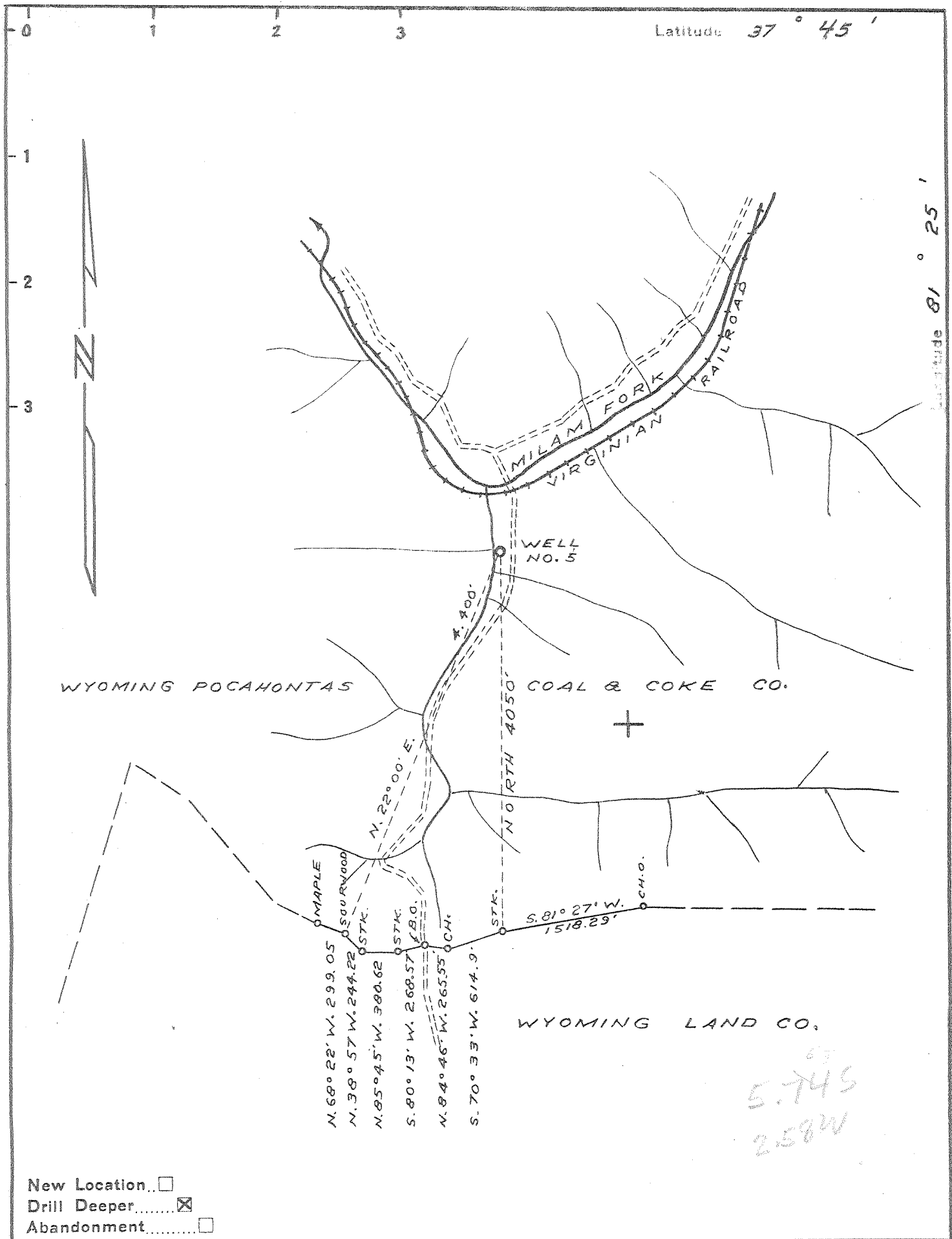
Company	RAVENCLIFFS DEV. CO.
Address	SABINE - W. VA.
Farm	WYOMING POCAHONTAS C. & C. CO.
Tract	Acres 30,582 Lease No. _____
Well (Farm) No.	5 Serial No. _____
Elevation (Spirit Level)	1808.6
Quadrangle	MULLENS N.W.
County	WYOMING District SLAB FORK
Engineer	<i>James Bell</i>
Engineer's Registration No.	772
File No.	_____ Drawing No. _____
Date	APRIL 18, 1953 Scale 1" = 1320'

STATE OF WEST VIRGINIA  
 DEPARTMENT OF MINES  
 OIL AND GAS DIVISION  
 CHARLESTON

WELL LOCATION MAP  
 FILE NO. WYO-1A

+ Denotes location of well on United States Topographic Maps, scale 1 to 62,500, latitude and longitude lines being represented by border lines as shown.  
 - Denotes one inch spaces on border line of original tracing.

6-6 (248)



Company RAVENCLIFFS DEV. CO.

Address SABINE - W. VA.

Farm WYOMING POCAHONTAS C. & C. CO.

Tract \_\_\_\_\_ Acres 30,582 Lease No. \_\_\_\_\_

Well (Farm) No. 5 Serial No. \_\_\_\_\_

Elevation (Spirit Level) 1808.6

Quadrangle MULLENS N.W.

County WYOMING District SLAB FORK

Engineer [Signature]

Engineer's Registration No. 772

File No. \_\_\_\_\_ Drawing No. \_\_\_\_\_

Date APRIL 18, 1953 Scale 1" = 1320'

STATE OF WEST VIRGINIA  
DEPARTMENT OF MINES  
OIL AND GAS DIVISION  
CHARLESTON

**WELL LOCATION MAP**

FILE NO. Wyo-387-D.

*Cancelled*

+ Denotes location of well on United States Topographic Maps, scale 1 to 62,500, latitude and longitude lines being represented by border lines as shown.

- Denotes one inch spaces on border line of original tracing.

109  
30001

RAVENCLIFFS DEVELOPMENT COMPANY

Log of Well No. 5\*

WELL NO. 5 - GAS  
 County - Wyoming, W. Va.  
 District - Slab Fork  
 Location - Low Gap Branch  
 Commenced - May 3, 1929  
 Completed - June 26, 1929  
 Elevation - 1808'

<u>Formations</u>	<u>Top</u>	<u>Bottom</u>	<u>Formations</u>	<u>Top</u>	<u>Bottom</u>
Surface	0	12	Slate	615	635
Sand	12	20	Sand	635	700
Slate	32	35	Coal	700	704
Sand boulders	35	43	Lime	704	720
Slate	51	56	Sand	720	805
Sand	56	112	Shells	805	855
Coal	112	115	Sand	855	940
Slate	115	120	Slate	940	970
Sand	120	200	Lime	970	1025
Shells	200	300	Sand	1025	1145
Slate	300	375	Slate	1145	1150
Shells	375	425	Sand	1150	1165
Sand	425	480	Shells	1165	1215
Coal, Beckley	480	486	Sand	1215	1275
Slate	486	530	Slate	1275	1312
Lime	530	580	Sand	1312	1370
Sand	580	595	R. Rock & Slate	1370	1384
Slate	595	597	Sand	1384	1427
Shells	597	615	Slate	1427	1430
			Total Depth		1430

Gas at 1396' - Show  
 1417' to 1425' - 192 M

Water at 704' - one bailer per hr.

Shot 1406' to 1424' with 90 qts. 6-27-29

Open Flow 320 MCF 24 hrs.

Casing Record:

10" - 17'  
 8-1/4" - 632'  
 6-5/8" - 1385'

RECORD  
 RAVENCLIFFS DEVELOPEMENT COMPANY  
 WELL NO. 5 LOW GAP BRANCH

109 30001  
 Elevation 1808

STARTED MAY 3, 1929  
 COMPLETED JUNE 26, 1929

Formation	Top	Bottom
Surface drift	0	12
Sand	12	20
Slate	32	37
Sand Bolders	35	43
Slate	51	56
Sand	76	112
Coal	112	115
Slate	115	118
Sand	120	200
Shells	200	300
Slate	300	375
Shells	375	425
Sand	425	480
Coal	480	486
Slate	486	530
Lime	530	580
Sand	580	595
Slate	595	597
Shells	597	615
Slate	615	635
Sand	635	700
Coal	700	704
Lime	704	720
Sand	720	805
Shells	805	855
Sand	855	940
Slate	940	970
Lime	970	1025
Sand	1025	1145
Slate	1145	1150
Sand	1150	1165
Shells	1165	1215
Sand	1215	1275
Slate	1275	1312
Sand	1312	1370
Red LooK & Slate	1370	1384
Sand	1384	1427
Slate	1427	1430

swell  
120

Beckley

#1 Pool  
1 Bailer water per-hour

Total depth 1430'

Show of gas 1396'

Gas 1417' to 1425' 16/10 Water 2" Open  
 10" Drive pipe 17' left in.  
 8 1/4" Casing 632' 30 Joints & 2 Nipples Left in  
 6 5/8" 1385' 64 Joints 1-9' and 1-8' Nipple left in  
 Well shot 90 Qts. top of shot 1406' bottom 1424'  
 Well shot June 27th.

#5

RAVENOLIFFS DEVELOPMENT COMPANY  
Cabins, West Virginia

Record of Bailing Well No. 5

Opened May 25th, 1942

Original Depth	1450'
Present Depth	1410'
Found Water	1404'

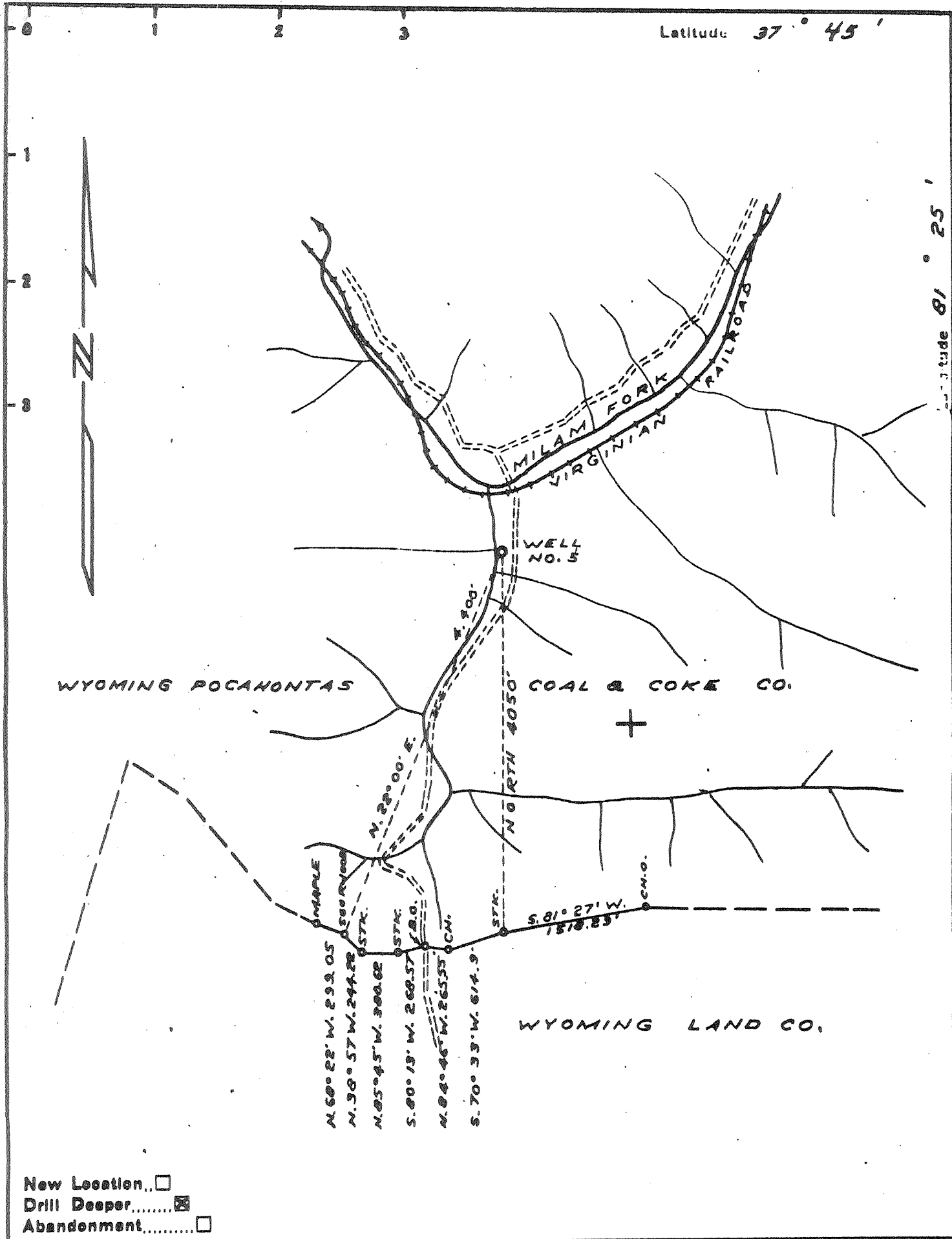
May 26th, 1942

Bailed out water (water was fresh)

Open Flow (after bailing) 10/10 W 2" : 153 M

Pickup

#5



New Location..   
 Drill Deeper.....   
 Abandonment.....

Company RAVENCLIFFS DEV. CO.  
 Address SABINE - W. VA.  
 Farm WYOMING POCAHONTAS C. & C. CO.  
 Tract \_\_\_\_\_ Acres 30,582 Lease No. \_\_\_\_\_  
 Well (Farm) No. 5 Serial No. \_\_\_\_\_  
 Elevation (Spirit Level) 1808.6  
 Quadrangle MULLENS NW.  
 County WYOMING District SLAB FORK  
 Engineer [Signature]  
 Engineer's Registration No. 772  
 File No. \_\_\_\_\_ Drawing No. \_\_\_\_\_  
 Date APRIL 10 1933 Scale 1" = 1200'

STATE OF WEST VIRGINIA  
 DEPARTMENT OF MINES  
 OIL AND GAS DIVISION  
 CHARLESTON

WELL LOCATION MAP  
 FILE NO. WVO-387-D. *IA*

*Cancelled* *Plugged under Wyo-1*  
 + Denotes location of well on United States Topographic Maps, scale 1 to 62,500, latitude and longitude lines being represented by border lines as shown.  
 - Denotes one inch squares on border line of original tracing.

Latitude 81° 25'

WVO-387-D