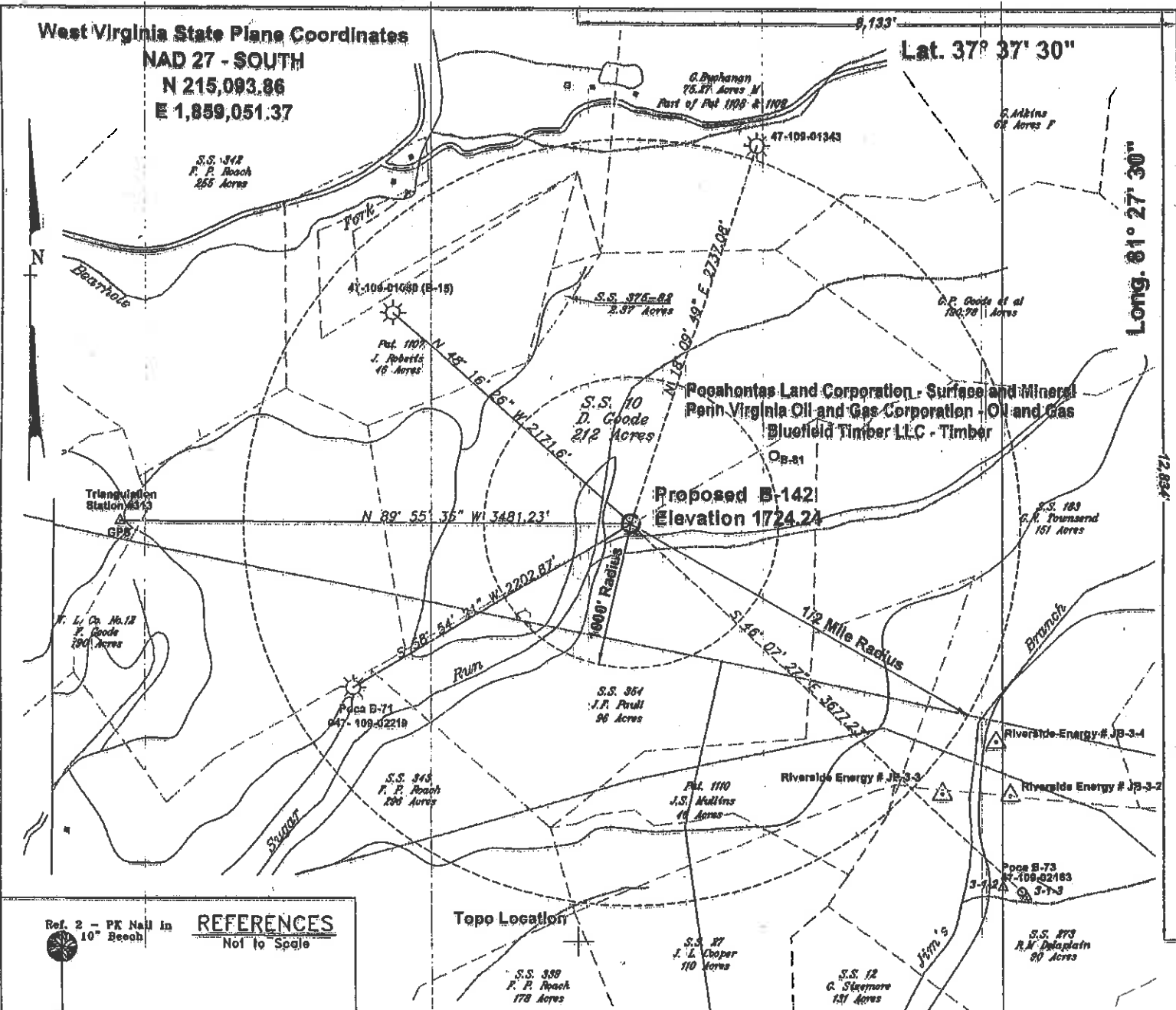


West Virginia State Plane Coordinates
 NAD 27 - SOUTH
 N 215,093.86
 E 1,859,051.37

Lat. 37° 37' 30"

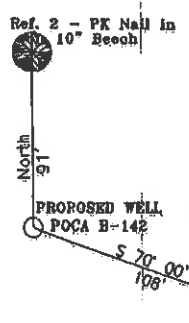
Long. 81° 27' 30"



Proposed B-142
 Elevation 1724.24

Topo Location

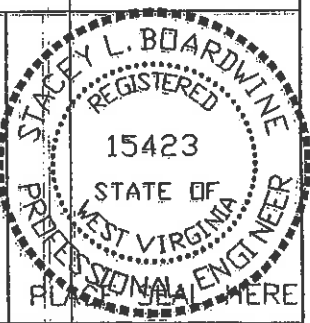
REFERENCES
 Not to Scale



Notes:
 No Dwellings exist within 200 feet of Poca B-142
 No Domestic Wells within 1000' of Gas Well Poca B-142
 (+) Denotes location of well on USGS map.
 Property Information taken from Wyoming Co. Tax Records
 Pocahontas Land Corporation Tract Lines -----

FILE No. CABOT OIL AND GAS 2004
 DIRECTORY C:\CABOT2004\B-142
 DRAWING NAME PlatB-142.dwg
 SCALE 1" = 1000'
 MINIMUM DEGREE OF ACCURACY 1 : 2500
 PROVEN SOURCE OF ELEVATION GPS GLOBAL POSITIONING SYSTEM

I THE UNDERSIGNED, HEREBY CERTIFY THAT THIS PLAT IS CORRECT TO THE BEST OF MY KNOWLEDGE AND BELIEF AND SHOWS ALL THE INFORMATION REQUIRED BY LAW AND THE REGULATIONS ISSUED AND PRESCRIBED BY THE DEPARTMENT OF MINES.
 (SIGNED) Stacey L. Boardwine
 R.P.E. 15423 R.P.S.



STATE OF WEST VIRGINIA
DEPARTMENT OF ENVIRONMENTAL PROTECTION
OFFICE OF OIL AND GAS
CHARLESTON, WV

DATE MARCH 30, 2004
 OPERATOR'S WELL No. POCA B-142
 API WELL No. 47 STATE 109 COUNTY 02417 PERMIT



WELL TYPE: OIL GAS LIQUID INJECTION WASTE DISPOSAL
 (IF "GAS") PRODUCTION STORAGE DEEP SHALLOW
 LOCATION: ELEVATION 1724.24 WATER SHED SUGAR RUN OF THE GUYANDOTTE RIVER
 DISTRICT CENTER COUNTY WYOMING
 QUADRANGLE MULLENS WV
 SURFACE OWNER POCAHONTAS LAND CORPORATION (S.S. 10) ACREAGE 5650.67 (Tax Map 118, Parcel 9)
 ROYALTY OWNER PENN VIRGINIA OIL AND GAS CORPORATION LEASE ACREAGE 22.348
 LEASE No. 47-0369
 PROPOSED WORK: DRILL CONVERT DRILL DEEPER REDRILL FRACTURE OR STIMULATE PLUG OFF OLD FORMATION PERFORATE NEW FORMATION OTHER PHYSICAL CHANGE IN WELL (SPECIFY)
 PLUG AND ABANDON CLEAN OUT AND REPLUG
 TARGET FORMATION GORDON ESTIMATED DEPTH 3955
 WELL OPERATOR CABOT OIL & GAS CORP. DESIGNATED AGENT THOMAS S. LIBERATORE
 ADDRESS 900 LEE ST. EAST SUITE 500 ADDRESS 900 LEE ST. EAST SUITE 500
CHARLESTON, WV 25301 CHARLESTON, WV 25301

(99) 66 JUN 2 11 2004

10/1

State of West Virginia
Division of Environmental Protection
Section of Oil and Gas
Well Operator's Report of Well Work

Farm Name: Pocahontas Land Corp. Operator Well No.: Pocahontas Land B-142

LOCATION: Elevation: 1725' Quadrangle: Mullens
District: Center County: Wyoming
Latitude: 12834' feet South of 37° DEG. 37' MIN. 30" SEC.
Longitude: 8133' feet West of 81° DEG. 27' MIN. 30" SEC.

Company: Cabot Oil & Gas Corporation
900 Lee Street East, Suite 500
Charleston, WV 25301

Agent: Thomas S. Liberatore
Inspector: Barry Stollings
Permit Issued: 6/9/2004
Well Work Commenced: August 9, 2004
Well Work Completed: September 8, 2004
Verbal Plugging: _____
Permission granted on: _____
Rotary X Cable _____
Total Depth (feet) 4004'
Fresh Water Depths (ft) 105'
Salt Water Depths (ft) None reported
Is coal being mined in area (Y / N) ? Y
Coal Depths (ft) 78'-79', 288'-289', 570'-572', 630'-634' (Open), 717'-719'

Casing & Tubing Size	Used in Drilling	Left In Well	Cement Fill Up Cu. Ft.
12 3/4"	22'	22'	N/A
9 5/8"	788'	788'	311
7"	1156'	1156'	276
4 1/2"		3959'	166
2 3/8"		3840'	

RECEIVED
Office of Oil & Gas
Office of Chief
JUL 12 2005
WV Department of
Environmental Protection

OPEN FLOW DATA

Producing Formation Gordon Pay Zone _____
Depth (ft) 3850'-3865'
Gas: Initial Open Flow TSTM MCF/d Oil: Initial Open Flow 0 Bbl/d
Final Open Flow 560 (COMMINGLED) MCF/d Final Open Flow 0 Bbl/d
Time of open flow between initial and final tests 624 Hours
Static rock pressure 630 psig surface pressure after 168 Hours

Second Producing Formation Pocono Pay Zone _____
Depth (ft) 3245'-3255'
Gas: Initial Open Flow TSTM MCF/d Oil: Initial Open Flow 0 Bbl/d
Final Open Flow 560 (COMMINGLED) MCF/d Final Open Flow 0 Bbl/d
Time of open flow between initial and final tests 624 Hours
Static rock pressure 630 psig surface pressure after 168 Hours

NOTE: ON BACK OF THIS FORM PUT THE FOLLOWING: 1.) DETAILS OF PERFORATED INTERVALS, FRACTURING OR STIMULATING, PHYSICAL CHANGE, ETC. 2.) THE WELL LOG WHICH IS SYSTEMATIC DETAILED GEOLOGICAL RECORD OF ALL FORMATIONS, INCLUDING COAL ENCOUNTERED BY THE WELLBORE

For: CABOT OIL & GAS CORPORATION

By: *W. J. [Signature]* Drilling Superintendent

Date: 7/1/05

WYO 2417

AUG 19 2005

STAGE	PERFS	ACID 15% HCl	FOAM	SAND (lbs)	NITROGEN (scf)	BDP	ATP	MTP	ISIP
1-Gordon	3850-3865 (30)	250 gal	75Q	60,000	590,300	1559	1433	1562	1224
2-Pocono	3245-3255 (40)	500 gal	75Q	60,928	443,000	1300	1227	1449	1274

FORMATION	TOP	BOTTOM	REMARKS
Overburden	0	3	
Sandstone	3	22	
Sandy Shale	22	78	
Coal	78	79	
Sandy Shale	79	198	
Sandstone	198	288	
Coal	288	289	
Sandy Shale	289	308	
Sandstone	308	570	
Coal	570	572	
Sandstone	572	632	
Coal (Open)	630	634	
Sandstone	634	717	
Coal	717	719	
Sandstone	719	1288	
Shale	1288	1406	
Rv, Sandstone	1406	1450	
Silt/Shale	1450	1492	
Avis, Limestone	1492	1544	
Silt/Shale	1544	2072	
Maxton	2072	2120	
Shale	2120	2440	
Little Lime	2440	2538	
Pencil Cave	2538	2650	
Big Lime	2650	3096	
Pocono	3096	3402	
Shale	3402	4004	TD

AUG 19 2

AUG 19 1980