

**PROPOSED WELL COORDINATES**

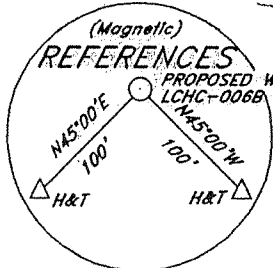
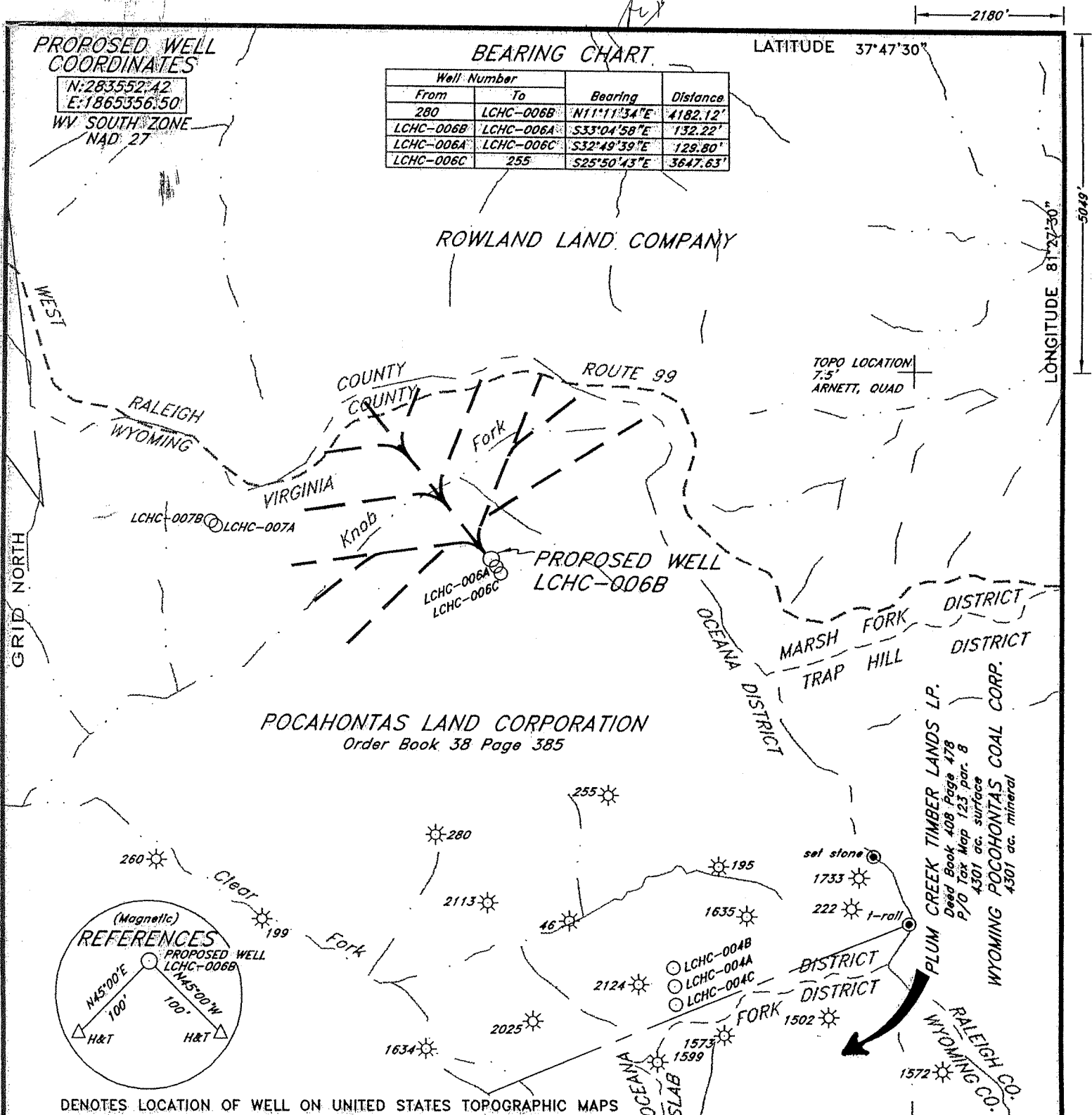
N:283552.42  
E:1865356.50

WV SOUTH ZONE  
NAD 27

**BEARING CHART**

LATITUDE 37°47'30"

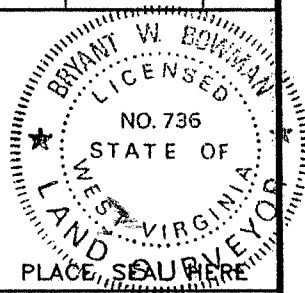
Well Number		Bearing	Distance
From	To		
280	LCHC-006B	N11°11'34"E	4182.12'
LCHC-006B	LCHC-006A	S33°04'58"E	132.22'
LCHC-006A	LCHC-006C	S32°49'39"E	129.80'
LCHC-006C	255	S25°50'43"E	3647.63'



Denotes location of well on United States Topographic Maps

FILE NO. \_\_\_\_\_  
DRAWING NO. \_\_\_\_\_  
SCALE 1"=2000'  
MINIMUM DEGREE OF ACCURACY 1:50000  
PROVEN SOURCE OF ELEVATION GPS DISK NO. H  
3409.26'

I THE UNDERSIGNED, HEREBY CERTIFY THAT THIS PLAT IS CORRECT TO THE BEST OF MY KNOWLEDGE AND BELIEF AND SHOWS ALL THE INFORMATION REQUIRED BY LAW AND THE REGULATIONS ISSUED AND PRESCRIBED BY THE DEPARTMENT OF ENVIRONMENTAL PROTECTION.  
(SIGNED) Bryant W. Bowman  
R.P.E. \_\_\_\_\_ L.L.S. 736



STATE OF WEST VIRGINIA  
DEPARTMENT OF ENVIRONMENTAL PROTECTION  
OIL AND GAS DIVISION



DATE MARCH 1, 2004  
OPERATOR'S WELL NO. LCHC-006B  
API WELL NO.

WELL TYPE: OIL GAS LIQUID INJECTION WASTE DISPOSAL  
(IF "GAS,") PRODUCTION STORAGE DEEP SHALLOW  
STATE COUNTY PERMIT

LOCATION: ELEVATION 2809.72' WATERSHED KNOB FORK OF CLEAR FORK  
DISTRICT OCEANA COUNTY WYOMING  
QUADRANGLE ARNETT, WY

SURFACE OWNER POCAHONTAS LAND CORPORATION ACREAGE 30000±  
OIL & GAS ROYALTY OWNER PENN VIRGINIA OIL & GAS CORPORATION LEASE ACREAGE 30000±  
LEASE NO. \_\_\_\_\_

PROPOSED WORK: DRILL  CONVERT \_\_\_\_\_ DRILL DEEPER \_\_\_\_\_ REDRILL \_\_\_\_\_ FRACTURE OR STIMULATE \_\_\_\_\_ PLUG OFF OLD FORMATION \_\_\_\_\_ PERFORATE NEW FORMATION \_\_\_\_\_ OTHER PHYSICAL CHANGE IN WELL (SPECIFY) \_\_\_\_\_

PLUG AND ABANDON \_\_\_\_\_ CLEAN-OUT AND REPLUG \_\_\_\_\_  
TARGET FORMATION L-BECKLEY COALS ESTIMATED DEPTH 1930  
WELL OPERATOR PENN VIRGINIA OIL & GAS CORPORATION DESIGNATED AGENT MR. HARRY JEWEL  
ADDRESS 2550 EAST STONE DRIVE SUITE 110 ADDRESS PO BOX 460  
KINGSPORT, TN 37660 RAVENCLIFF, WV 25913

FORM WV-6

COUNTY NAME

PERMIT

Unnamed 4-0

WV D 2395 C

State of West Virginia  
Division of Environmental Production  
Section of Oil and Gas  
Well Operator's Report of Well Work

Farm Name Pocahontas Land Corporation

Operator Well No.: LCHC-006B

LOCATION: Elevation: 2809.72

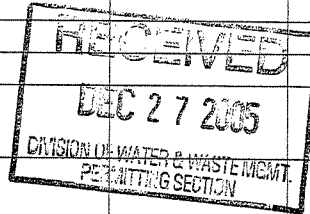
Quadrangle: Arnett 7 1/2'

District: Oceana County: Wyoming  
Latitude: 5049 Feet South of 37 Deg. 47 Min. 30 Sec.  
Longitude: 2180 Feet West of 81 Deg. 27 Min. 30 Sec.

Company:

**Penn Virginia Oil & Gas Corporation**

	Casing and Tubing	Used in drilling	Left in well	Cement fill up Cu. Ft.
Address: 2550 East Stone Drive, Suite 110 Kingsport, TN 37660	20"	60'	60'	0
Agent: Harry Jewell	13 3/8"	231'	231'	0
Inspector: Ralph Triplett	9 5/8"	1005'	1005'	401 cu ft
Date Permit Issued: 06/01/2004	7"	1723'	1723'	319 cu ft
Date Well Work Commenced: <u>08/12/04</u>				
Date Well Work Completed: 11/18/2004				
Verbal Plugging:				
Date Permission granted on:				
Rotary X Cable Rig				
Total Depth (feet): 1,927				
Fresh Water Depth (ft): NA				
Salt Water Depth (ft): NA				
Is coal being mined in area (N/Y)?				
Coal Depths (ft):				



OPEN FLOW DATA

Producing formation Lower Beckley Coals Pay zone depth (ft) \_\_\_\_\_

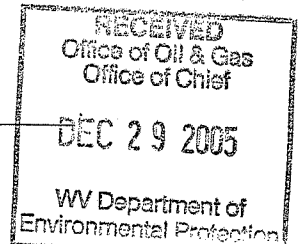
Gas: Initial open flow \_\_\_\_\_ MCF/d Oil: Initial open flow \_\_\_\_\_ Bbl/d  
 Final open flow \_\_\_\_\_ MCF/d Final open flow \_\_\_\_\_ Bbl/d  
 Time of open flow between initial and final tests: \_\_\_\_\_ Hours

Static rock pressure \_\_\_\_\_ psig (surface pressure) after \_\_\_\_\_ Hours

Second producing formation \_\_\_\_\_ Pay zone depth (ft) \_\_\_\_\_

Gas: Initial open flow \_\_\_\_\_ MCF/d Oil: Initial open flow \_\_\_\_\_ Bbl/d  
 Final open flow \_\_\_\_\_ MCF/d Final open flow \_\_\_\_\_ Bbl/d  
 Time of open flow between initial and final tests: \_\_\_\_\_ Hours

Static rock pressure \_\_\_\_\_ psig (surface pressure) after \_\_\_\_\_ Hours



NOTE: ON BACK OF THIS FORM PUT THE FOLLOWING: 1). DETAILS OF PERFORATED INTERVALS, FRACTURING OR STIMULATING, PHYSICAL CHANE, TEC. 2). THE WELL LOG WHICH IS A SYSTEMATIC DETAILED GEOLOGICAL RECORD OF ALL FORMATIONS, INCLUDING COAL ENCOUNTERED BY THE WELLBORE.

Signed: Michael Stumfer  
By: Michael Stumfer  
Date: 12/17/2005

FEB 17 2006

WYO 2395C

DETAILS OF PERFORATIONS, FRACTURING, OR PHYSICAL CHANGE, ETC.

---

<u>FORMATIONS</u>	<u>TOP</u>	<u>BOTTOM</u>	<u>REMARKS</u>
Sandstone, Shale	0	1882.5	
Coal (Lower Beckley)	1882.5	1887	
Sandstone, Shale	1887	1927	

State of West Virginia  
Division of Environmental Production  
Section of Oil and Gas

*deviated*

Well Operator's Report of Well Work

Farm Name Pocahontas Land Corporation

Operator Well No.: LCHC-006B

LOCATION: Elevation: 2809.72

Quadrangle: Arnett 7 1/2'

District: Oceana County: Wyoming  
Latitude: 5049 Feet South of 37 Deg. 47 Min. 30 Sec.  
Longitude: 2180 Feet West of 81 Deg. 27 Min. 30 Sec.

Company:

**Penn Virginia Oil & Gas Corporation**

	Casing and Tubing	Used in drilling	Left in well	Cement fill up Cu. Ft.
Address: 2550 East Stone Drive, Suite 110	20"	60'	60'	0
Kingsport, TN 37660	13 3/8"	231'	231'	0
Agent: Harry Jewell	9 5/8"	1005'	1005'	401 cu ft
Inspector: Ralph Triplett	7"	1723'	1723'	319 cu ft
Date Permit Issued: 06/01/2004				
Date Well Work Commenced: <u>08/12/04</u>				
Date Well Work Completed: 11/18/2004				
Verbal Plugging:				
Date Permission granted on:				
Rotary X Cable Rig				
Total Depth (feet): 1,927				
Fresh Water Depth (ft): NA				
Salt Water Depth (ft): NA				
Is coal being mined in area (N/Y)?				
Coal Depths (ft):				

OPEN FLOW DATA

Producing formation Lower Beckley Coals Pay zone depth (ft) \_\_\_\_\_  
 Gas: Initial open flow \_\_\_\_\_ MCF/d Oil: Initial open flow \_\_\_\_\_ Bbl/d  
 Final open flow \_\_\_\_\_ MCF/d Final open flow \_\_\_\_\_ Bbl/d  
 Time of open flow between initial and final tests: \_\_\_\_\_ Hours  
 Static rock pressure \_\_\_\_\_ psig (surface pressure) after \_\_\_\_\_ Hours

Second producing formation \_\_\_\_\_ Pay zone depth (ft) \_\_\_\_\_  
 Gas: Initial open flow \_\_\_\_\_ MCF/d Oil: Initial open flow \_\_\_\_\_ Bbl/d  
 Final open flow \_\_\_\_\_ MCF/d Final open flow \_\_\_\_\_ Bbl/d  
 Time of open flow between initial and final tests: \_\_\_\_\_ Hours  
 Static rock pressure \_\_\_\_\_ psig (surface pressure) after \_\_\_\_\_ Hours

NOTE: ON BACK OF THIS FORM PUT THE FOLLOWING: 1). DETAILS OF PERFORATED INTERVALS, FRACTURING OR STIMULATING, PHYSICAL CHANE, TEC. 2). THE WELL LOG WHICH IS A SYSTEMATIC DETAILED GEOLOGICAL RECORD OF ALL FORMATIONS, INCLUDING COAL ENCOUNTERED BY THE WELLBORE.

Signed: Michael Stampfer  
By: Michael Stampfer  
Date: 12/21/2005

RECEIVED  
Office of Oil & Gas  
Office of Chief  
JAN 23 2006  
WV Department of  
Environmental Protection

JAN 27 2006

WYO 2395 C

DETAILS OF PERFORATIONS, FRACTURING, OR PHYSICAL CHANGE, ETC.

---

<u>FORMATIONS</u>	<u>TOP</u>	<u>BOTTOM</u>	<u>REMARKS</u>
Sandstone, Shale	0	1882.5	
Coal (Lower Beckley)	1882.5	1887	
Sandstone, Shale	1887	1927	

JAN 27 2006