

BEARING CHART

Well Number		Bearing	Distance
From	To		
1319	WPHC-002B	S00°15'14"E	2389.44'
WPHC-002B	WPHC-002A	N69°52'30"E	102.57'
WPHC-002A	WPHC-002C	S07°03'51"E	111.43'
WPHC-002C	1598	S86°36'12"E	3198.88'

LATITUDE 37°45'00"

1635

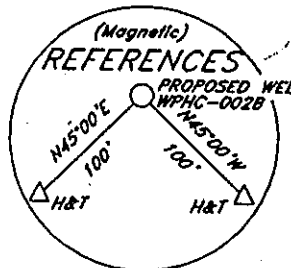
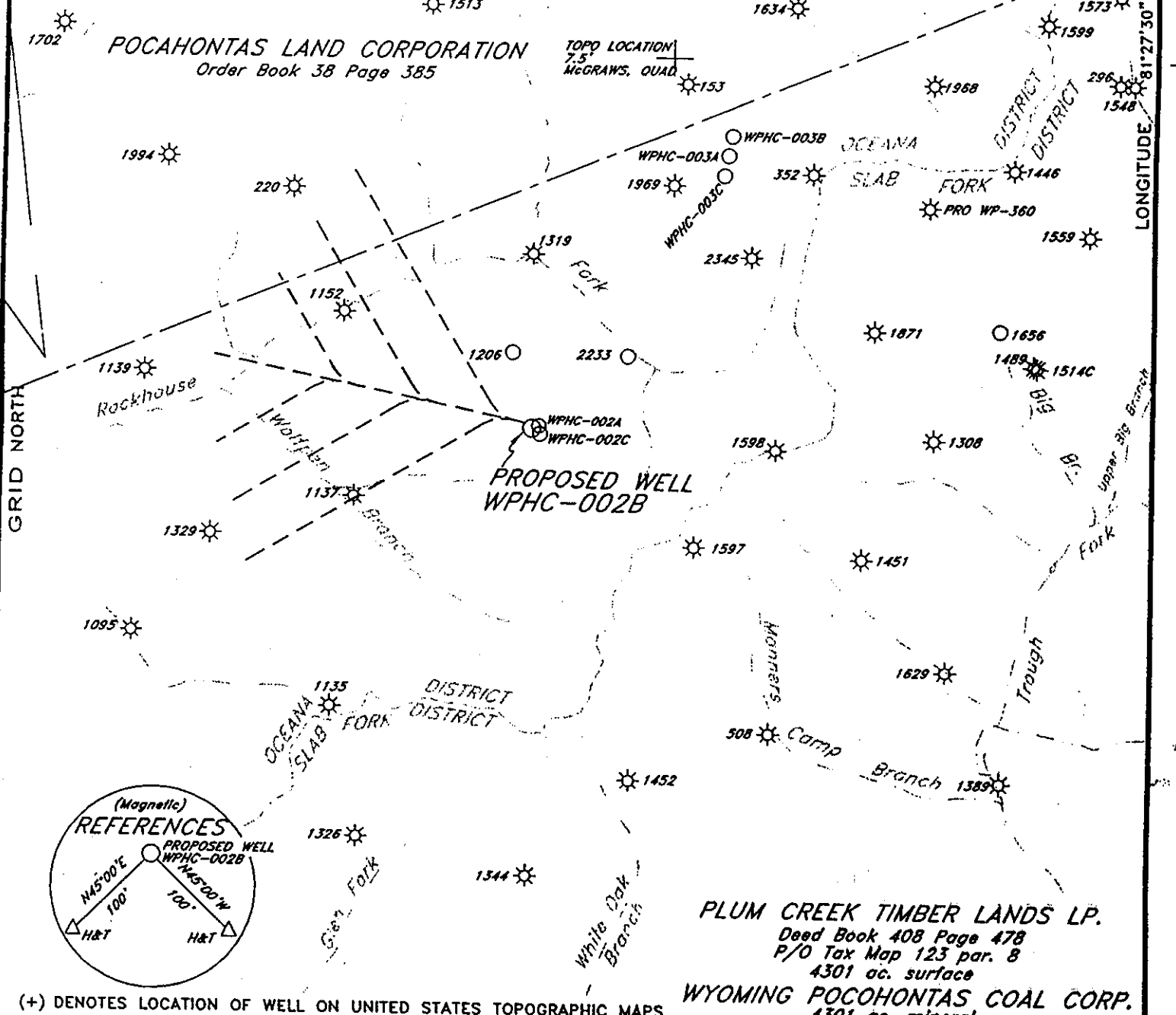
PROPOSED WELL COORDINATES

N: 270488.17
E: 1860890.57

WV SOUTH ZONE
NAD 27

POCAHONTAS LAND CORPORATION
Order Book 38 Page 385

TOPO LOCATION
7.5
McGraws, Quad



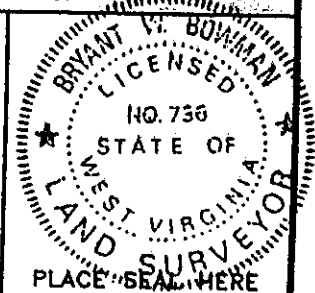
PLUM CREEK TIMBER LANDS LP.
Deed Book 408 Page 478
P/O Tax Map 123 par. 8
4301 ac. surface

WYOMING POCAHONTAS COAL CORP.
4301 ac. mineral

(+) DENOTES LOCATION OF WELL ON UNITED STATES TOPOGRAPHIC MAPS

FILE NO. _____
DRAWING NO. _____
SCALE 1"=2000'
MINIMUM DEGREE OF ACCURACY 1:20000
PROVEN SOURCE OF ELEVATION GPS DISK NO. K
2528.22'

I THE UNDERSIGNED, HEREBY CERTIFY THAT THIS PLAT IS CORRECT TO THE BEST OF MY KNOWLEDGE AND BELIEF AND SHOWS ALL THE INFORMATION REQUIRED BY LAW AND THE REGULATIONS ISSUED AND PRESCRIBED BY THE DEPARTMENT OF ENVIRONMENTAL PROTECTION.
(SIGNED) Bryant V. Bowman
R.P.E. _____ L.L.S. 736



STATE OF WEST VIRGINIA
DEPARTMENT OF ENVIRONMENTAL PROTECTION
OIL AND GAS DIVISION



DATE MARCH 1, 2004
OPERATOR'S WELL NO. WPHC-002B
API WELL NO. _____

WELL TYPE: OIL GAS LIQUID INJECTION WASTE DISPOSAL
(IF "GAS,") PRODUCTION STORAGE DEEP SHALLOW
LOCATION: ELEVATION 2666.66' WATERSHED ROCKHOUSE FORK OF CLEAR FORK
DISTRICT OCEANA COUNTY WYOMING
QUADRANGLE McGraws, WV

SURFACE OWNER PLUM CREEK TIMBER LANDS LP. ACREAGE 4301±
OIL & GAS ROYALTY OWNER PENN VIRGINIA OIL & GAS CORPORATION LEASE ACREAGE 30000±
LEASE NO. _____

PROPOSED WORK: DRILL CONVERT DRILL DEEPER REDRILL FRACTURE OR STIMULATE PLUG OFF OLD FORMATION PERFORATE NEW FORMATION OTHER PHYSICAL CHANGE IN WELL (SPECIFY) _____

PLUG AND ABANDON CLEAN OUT AND REPLUG
TARGET FORMATION L. Deckley (Coal) ESTIMATED DEPTH 1655'
WELL OPERATOR PENN VIRGINIA OIL & GAS CORPORATION DESIGNATED AGENT MR. HARRY JEWEL
ADDRESS 2550 EAST STONE DRIVE SUITE 110 ADDRESS PO BOX 460
KINGSPORT, TN 37660 RAVENCLIFF, WV 25913

COUNTY NAME WYO
PERMIT 2391-C

APR 23 2004

MJP

State of West Virginia
Division of Environmental Production
Section of Oil and Gas
Well Operator's Report of Well Work

Farm Name The Forest Land Group, LLC

Operator Well No.: WPHC-002B

LOCATION: Elevation: 2666.66

Quadrangle: McGraws 7 1/2'

District: Oceana County: Wyoming
Latitude: 2960 Feet South of 37 Deg. 45 Min. 00 Sec.
Longitude: 6570 Feet West of 81 Deg. 27 Min. 30 Sec.

Company:

Penn Virginia Oil & Gas Corporation

	Casing and Tubing	Used in drilling	Left in well	Cement fill up Cu. Ft.
Address: 2550 East Stone Drive, Suite 110 Kingsport, TN 37660	13 3/8"	43'	43'	21
Agent: Harry Jewell	7"	1570'	1570'	271
Inspector: Ralph Triplett				
Date Permit Issued: 04/21/2004				
Date Well Work Commenced: 05/24/2004				
Date Well Work Completed: 09/27/2004				
Verbal Plugging:				
Date Permission granted on:				
Rotary X Cable Rig				
Total Depth (feet): 1,539				
Fresh Water Depth (ft):				
Salt Water Depth (ft):				
Is coal being mined in area (N/Y)? N				
Coal Depths (ft):				

OPEN FLOW DATA

Producing formation Lower Beckley Coal Pay zone depth (ft) 1539'
 Gas: Initial open flow 0 MCF/d Oil: Initial open flow _____ Bbl/d
 Final open flow _____ MCF/d Final open flow _____ Bbl/d
 Time of open flow between initial and final tests: _____ Hours
 Static rock pressure _____ psig (surface pressure) after _____ Hours

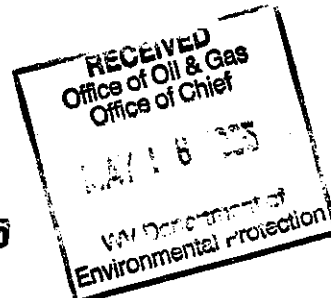
Second producing formation _____ Pay zone depth (ft) _____
 Gas: Initial open flow _____ MCF/d Oil: Initial open flow _____ Bbl/d
 Final open flow _____ MCF/d Final open flow _____ Bbl/d
 Time of open flow between initial and final tests: _____ Hours
 Static rock pressure _____ psig (surface pressure) after _____ Hours

NOTE: ON BACK OF THIS FORM PUT THE FOLLOWING: 1). DETAILS OF PERFORATED INTERVALS, FRACTURING OR STIMULATING, PHYSICAL CHANE, TEC. 2). THE WELL LOG WHICH IS A SYSTEMATIC DETAILED GEOLOGICAL RECORD OF ALL FORMATIONS, INCLUDING COAL ENCOUNTERED BY THE WELLBORE.

Signed:

Michael E. Stamper
By: MICHAEL E. STAMPER
Date: 4/2/2005

MAY 20 2005



WYO 2391C

DETAILS OF PERFORATIONS, FRACTURING, OR PHYSICAL CHANGE, ETC.

<u>FORMATIONS</u>	<u>TOP</u>	<u>BOTTOM</u>	<u>REMARKS</u>
Sandstone/Shale/Coal	0	1120	
Sandstone	1120	1206	
Sandstone/Shale/Coal	1206	1410	
Sandstone	1410	1542	
Sandstone/Shale	1542	1660	
Coal (Lower Beckley)	1660	1668	1539 TVD Turned Horizontal in Coal
Sandstone/Shale	1668	1735	