

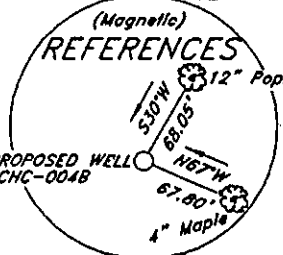
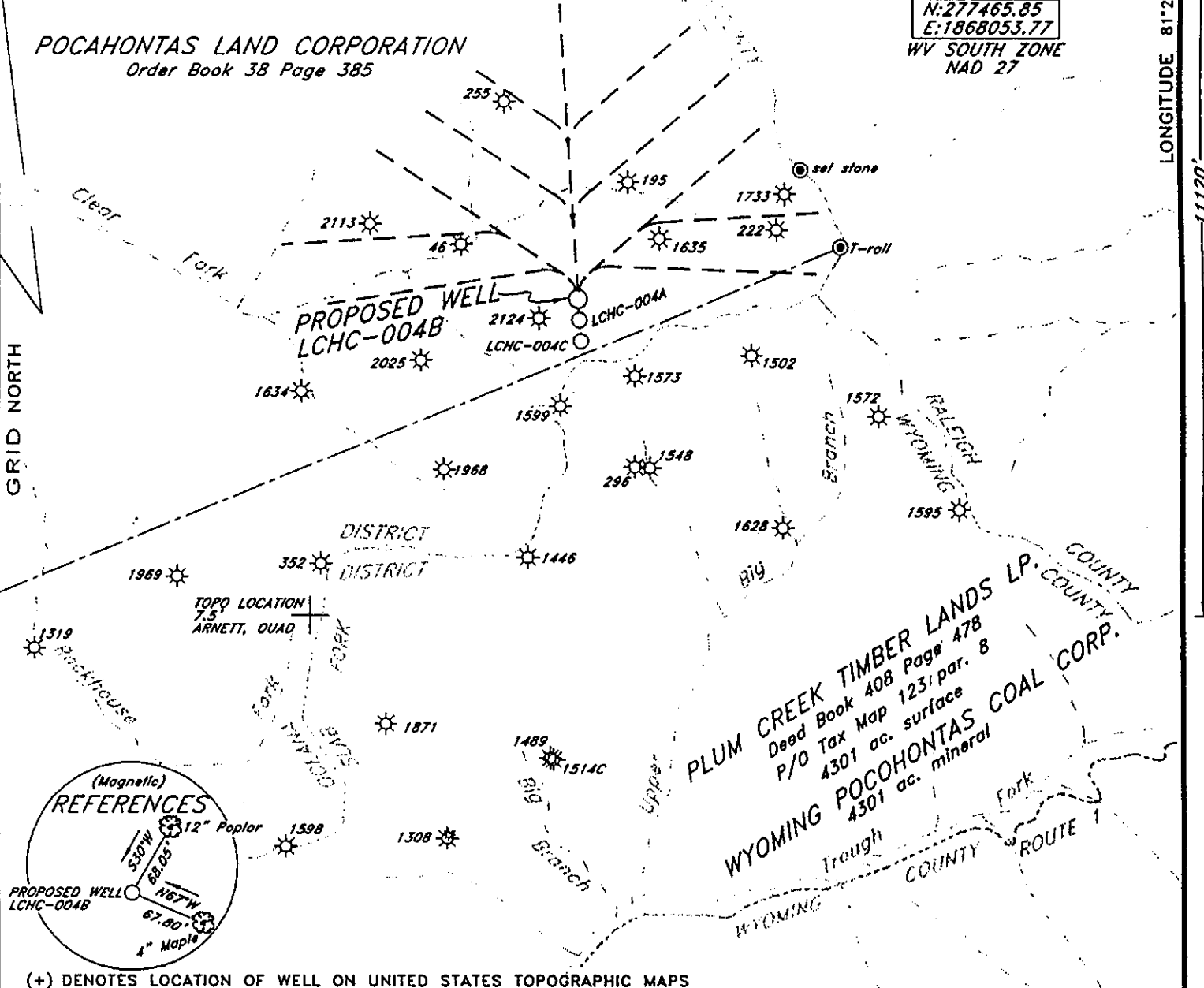
BEARING CHART

Well Number		Bearing	Distance
From	To		
2124	LCHC-004B	N64°27'08"E	574.30'
LCHC-004B	LCHC-004A	S03°19'21"E	273.40'
LCHC-004A	LCHC-004C	S03°23'34"E	272.87'
LCHC-004C	1573	S57°06'45"E	845.40'

PROPOSED WELL COORDINATES

N:277465.85
 E:1868053.77
 WV SOUTH ZONE
 NAD 27

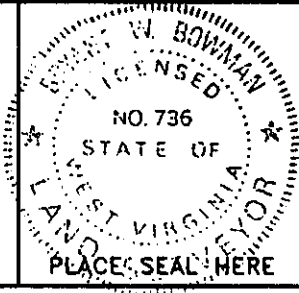
POCAHONTAS LAND CORPORATION
 Order Book 38 Page 385



(+) DENOTES LOCATION OF WELL ON UNITED STATES TOPOGRAPHIC MAPS

FILE NO. _____
 DRAWING NO. _____
 SCALE 1"=2000'
 MINIMUM DEGREE OF ACCURACY 1:17000
 PROVEN SOURCE OF ELEVATION GPS DISK NO. M
 2850.77'

I THE UNDERSIGNED, HEREBY CERTIFY THAT THIS PLAT IS CORRECT TO THE BEST OF MY KNOWLEDGE AND BELIEF AND SHOWS ALL THE INFORMATION REQUIRED BY LAW AND THE REGULATIONS ISSUED AND PRESCRIBED BY THE DEPARTMENT OF ENVIRONMENTAL PROTECTION.
 (SIGNED) Dryant Swann
 R.P.E. _____ L.L.S. 736



STATE OF WEST VIRGINIA
 DEPARTMENT OF ENVIRONMENTAL PROTECTION
 OIL AND GAS DIVISION

DATE NOVEMBER 17, 2003
 OPERATOR'S WELL NO. LCHC-004B
 API WELL NO. _____

WELL TYPE: OIL ___ GAS ___ LIQUID INJECTION ___ WASTE DISPOSAL ___
 (IF "GAS,") PRODUCTION ___ STORAGE ___ DEEP ___ SHALLOW ___

LOCATION: ELEVATION 2792.89' WATERSHED CLEAR FORK
 DISTRICT OCEANA COUNTY WYOMING
 QUADRANGLE ARNETT, WY

SURFACE OWNER POCAHONTAS LAND CORPORATION ACREAGE 30000±
 OIL & GAS ROYALTY OWNER PENN VIRGINIA OIL & GAS CORPORATION LEASE ACREAGE 30000±
 LEASE NO. _____

PROPOSED WORK: DRILL CONVERT ___ DRILL DEEPER ___ REDRILL ___ FRACTURE OR STIMULATE ___ PLUG OFF OLD FORMATION ___ PERFORATE NEW FORMATION ___ OTHER PHYSICAL CHANGE IN WELL (SPECIFY) _____

PLUG AND ABANDON ___ CLEAN OUT AND REPLUG ___
 TARGET FORMATION BECKLEY COALS ESTIMATED DEPTH 1710
 WELL OPERATOR PENN VIRGINIA OIL & GAS CORPORATION DESIGNATED AGENT MR. HARRY JEWEL
 ADDRESS 2550 EAST STONE DRIVE SUITE 110 ADDRESS PO BOX 460
 KINGSFORT, TN 37660 RAVENCLIFF, WV 25913

0052.18 EDUIGNOT

0211

FORM WW-6

WYO COUNTY NAME

PERMIT

2364-C

6-6 (246)

NOV 19 2003

HP

State of West Virginia
Division of Environmental Production
Section of Oil and Gas
Well Operator's Report of Well Work

Farm Name Pocahontas Land Corporation

Operator Well No.: LCHC-004B

LOCATION: Elevation: 2792.89

Quadrangle: Arnett 7 1/2'

District: Oceana County: Wyoming
Latitude: 11120 Feet South of 37 Deg. 47 Min. 30 Sec.
Longitude: 11500 Feet West of 81 Deg. 25 Min. 00 Sec.

Company:

Penn Virginia Oil & Gas Corporation

	Casing and Tubing	Used in drilling	Left in well	Cement fill up Cu. Ft.
Address: 2550 East Stone Drive, Suite 110	16"	62'	62'	0
Kingsport, TN 37660	9 5/8"	311'	311'	153
Agent: Harry Jewell	7"	1515'	1515'	266
Inspector: Ralph Triplett				
Date Permit Issued: 01/09/2004				
Date Well Work Commenced: 02/16/2004				
Date Well Work Completed: 09/07/2004				
Verbal Plugging:				
Date Permission granted on:				
Rotary X Cable Rig				
Total Depth (feet): 1,659				
Fresh Water Depth (ft):				
Salt Water Depth (ft):				
Is coal being mined in area (N/Y)? N				
Coal Depths (ft):				

OPEN FLOW DATA

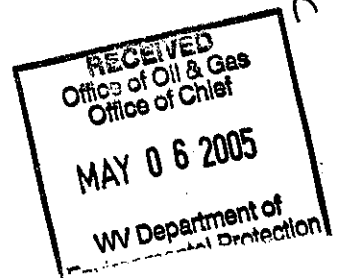
Producing formation Lower Beckley Coals Pay zone depth (ft) 1659'
 Gas: Initial open flow 0 MCF/d Oil: Initial open flow _____ Bbl/d
 Final open flow _____ MCF/d Final open flow _____ Bbl/d
 Time of open flow between initial and final tests: _____ Hours
 Static rock pressure _____ psig (surface pressure) after _____ Hours

Second producing formation _____ Pay zone depth (ft) _____
 Gas: Initial open flow _____ MCF/d Oil: Initial open flow _____ Bbl/d
 Final open flow _____ MCF/d Final open flow _____ Bbl/d
 Time of open flow between initial and final tests: _____ Hours
 Static rock pressure _____ psig (surface pressure) after _____ Hours

NOTE: ON BACK OF THIS FORM PUT THE FOLLOWING: 1). DETAILS OF PERFORATED INTERVALS, FRACTURING OR STIMULATING, PHYSICAL CHANE, TEC. 2). THE WELL LOG WHICH IS A SYSTEMATIC DETAILED GEOLOGICAL RECORD OF ALL FORMATIONS, INCLUDING COAL ENCOUNTERED BY THE WELLBORE.

Signed:

Michael E. Stamber
By: MICHAEL E. STAMBER
Date: 4/3/2005



MAY 20 2005

WYO 2364 C

DETAILS OF PERFORATIONS, FRACTURING, OR PHYSICAL CHANGE, ETC.

<u>FORMATIONS</u>	<u>TOP</u>	<u>BOTTOM</u>	<u>REMARKS</u>
Sandstone/Shale	0	425	
Coal	425	430	
Sandstone/Shale	430	545	
Coal	545	547	
Sandstone/Shale	547	559	
Coal	559	562	
Sandstone/Shale	562	641	
Coal	641	644	
Sandstone/Shale	644	676	
Coal	676	679	
Sandstone/Shale	679	745	
Coal	745	746	
Sandstone/Shale	746	1089	
Coal	1089	1090	
Sandstone/Shale	1090	1142	
Coal	1142	1143	
Sandstone/Shale	1143	1366	
Coal	1366	1368	
Sandstone/Shale	1368	1397	
Coal	1397	1401	
Sandstone/Shale	1401	1656	
Coal (Lower Beckley)	1656	1659	TVD 1659 TVD Turned Horizontal in Coal
Sandstone/Shale	1659	1704	
Coal	1704	1705	
Sandstone/Shale	1705	1727	
		1659	