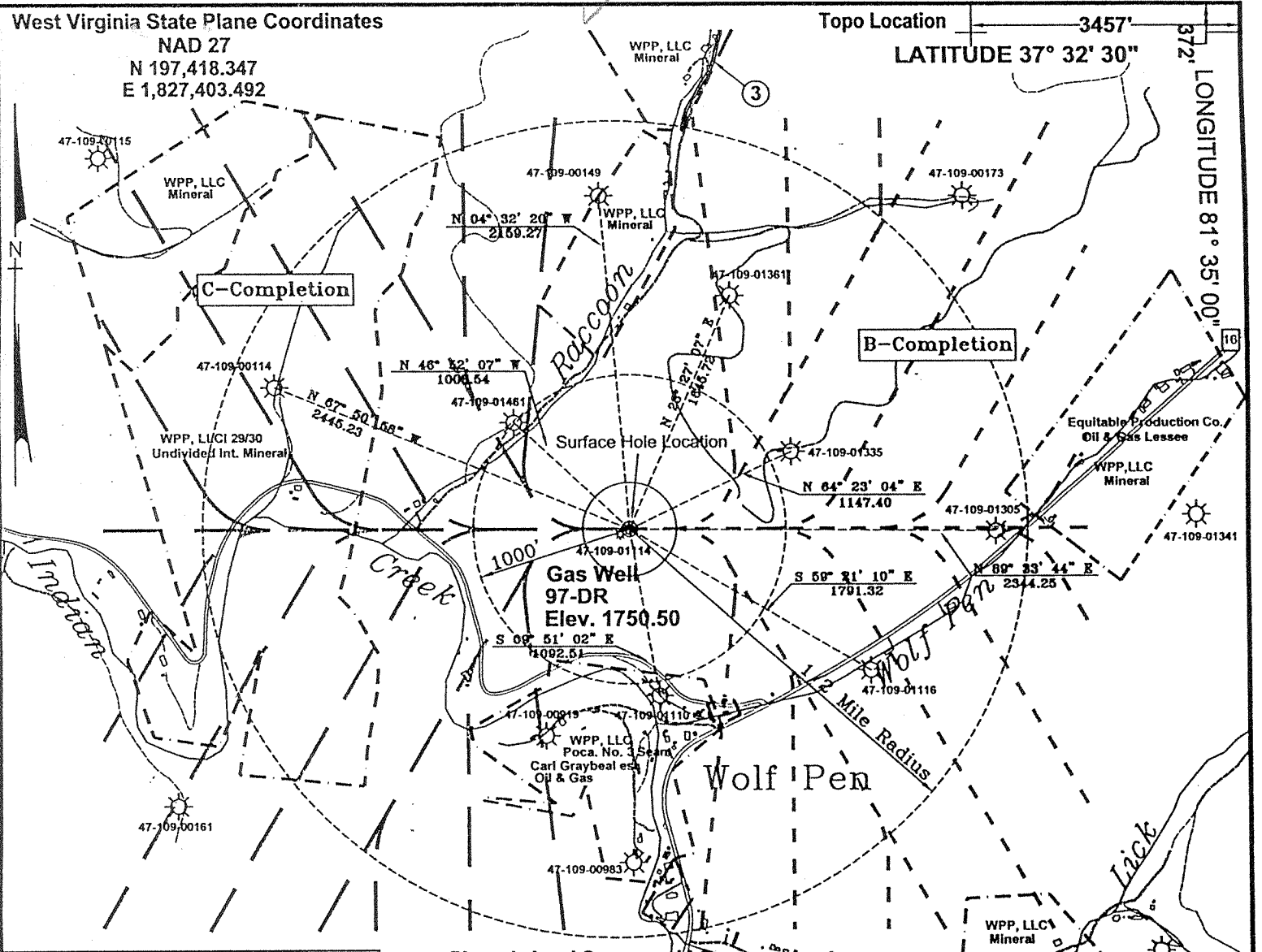


West Virginia State Plane Coordinates

NAD 27
N 197,418.347
E 1,827,403.492

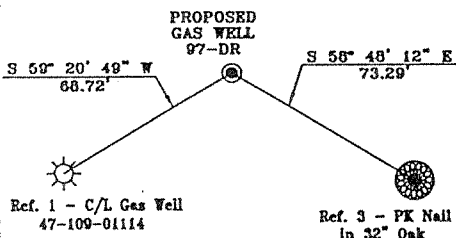
Topo Location 3457'
LATITUDE 37° 32' 30"

372'
LONGITUDE 81° 35' 00"



REFERENCES

Not to Scale



Pinnacle Land Company, LLC
Surface, Oil and Gas
WPP, LLC
Pocahontas No. 3 & 4 Coal Seams,
Bluestone Coal Corporation
All Coal Seams Above No. 4
Dominion Exploration and Production Inc.
Oil and Gas Lessee

TAX MAP No.	PARCEL No.	COAL OWNER
126		3. Plum Creek Timberlands

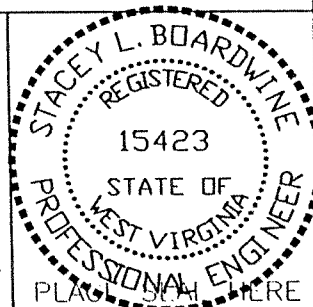
Legend	
---	B-Horizontal Completion
---	C-Horizontal Completion
○	Proposed CBM Well
*	Proposed CBM Well

Notes:
No known domestic water supplies within 1000 feet.
(+) Denotes location of well on USGS map.

FILE No. CDXGAS
DRAWING NAME \CDX-2003\PLAT 97-D
DRAWING NAME Plat97-D
SCALE 1" = 1000'
MINIMUM DEGREE OF ACCURACY 1 : 2500
PROVEN SOURCE OF ELEVATION GPS - GLOBAL POSITIONING SYSTEM

I THE UNDERSIGNED, HEREBY CERTIFY THAT THIS PLAT IS CORRECT TO THE BEST OF MY KNOWLEDGE AND BELIEF AND SHOWS ALL THE INFORMATION REQUIRED BY LAW AND THE REGULATIONS ISSUED AND PRESCRIBED BY THE DEPARTMENT OF MINES.

(SIGNED) Stacey L Boardwine
R.P.E. 15423 R.P.S.



STATE OF WEST VIRGINIA
DEPARTMENT OF ENVIRONMENTAL PROTECTION
OFFICE OF OIL AND GAS
CHARLESTON, WV

DATE December 16, 2003
OPERATOR'S WELL No. 97-DR
API WELL No. 47 - 109 - 2343
STATE COUNTY PERMIT

WELL TYPE: OIL GAS CBM LIQUID INJECTION WASTE DISPOSAL
(IF "GAS") PRODUCTION X STORAGE DEEP SHALLOW
LOCATION: ELEVATION 1750.50 WATER SHED RACCOON BRANCH OF INDIAN CREEK
DISTRICT CENTER COUNTY WYOMING
QUADRANGLE PINEVILLE, WV

SURFACE OWNER PINNACLE LAND COMPANY, LLC ACREAGE 33,742.55
CBM ROYALTY OWNER REFER TO APPLICATION LEASE ACREAGE

LEASE No. _____

PROPOSED WORK: DRILL X CONVERT DRILL DEEPER REDRILL FRACTURE OR
STIMULATE PLUG OFF OLD FORMATION PERFORATE NEW
FORMATION OTHER PHYSICAL CHANGE IN WELL (SPECIFY)

PLUG AND ABANDON CLEAN OUT AND REPLUG
TARGET FORMATION POCAHONTAS NO. 3 AND PENN. COALS ESTIMATED DEPTH 997'
WELL OPERATOR CDX GAS, LLC DESIGNATED AGENT JOSEPH ZUPANICK
ADDRESS P.O. BOX 609 ADDRESS PINEVILLE, WV 24874
PINEVILLE, WV 24874

6-6 BAILEYSVILLE (272)

State of West Virginia
Division of Environmental Protection
Section of Oil & Gas
Well Operator's Report of Well Work

Farm name: U.S. Steel Mining Company

Operator Well No: 97D-R

Location: Elevation: 1745.81

Quadrangle: Pineville

District: Center

County: Wyoming

Latitude: 3457 Feet South of 37 Deg. 32 Min. 30 Sec.
Longitude: 372 Feet West of 81 Deg. 35 Min. 00 Sec.

RECEIVED
Office of Oil & Gas
Office of Chief
JUN 08 2004
WV Department of
Environmental Protection

Company: CDX Gas, LLC
P.O. Box 609
Pineville, WV 24874

Agent: JOSEPH A. ZUPANICK

Inspector: Raulph Triplett
Permit Issued: 12/22/2003
Well Work commenced: 3/10/2004
Well Work completed: 5/4/2004
Verbal plugging
Permission granted on:
Rotary x Cable _____ Rig
Total depth (ft) A-Completion 959, B-Completion 1005, C-Completion 1007
Fresh water depths (ft) N/A
Salt water depths (ft) N/A
Is coal being mined in the area (Y/N)? Y
Coal depths (ft): B-Completion 220,311,620,857,959
C-Completion 220,311,619,856,958

Casing & Tubing Size	Used in Drilling	Left in Well	Cement Fill up
30"	26	26	3.2bbbls
24"	248	248	61.5bbbls
9 5/8"	248	248	24bbbls
9 5/8"	248	248	24bbbls
9 5/8"	248	248	24bbbls
7"	750	750	25bbbls
7"	933	933	28bbbls
7"	937	937	27.9bbbls

OPEN FLOW DATA

Producing formation Completion A (Non-producer)

Gas: Initial open flow N/A Mcf/d
Final open flow N/A Mcf/d

Pay zone depth (ft)
Oil: Initial open flow _____ Bbl/d
Final open flow _____ Bbl/d

Time of open flow between initial and final tests: _____ hours
Static rock pressure _____ psig (surface pressure) after _____ hours

Second Producing formation Completion B (Poca No.3)

Gas: Initial open flow _____ Mcf/d
Final open flow _____ Mcf/d

Pay zone depth 959 (ft)
Oil: Initial open flow _____ Bbl/d
Final open flow _____ Bbl/d

Time of open flow between initial and final tests: _____ hours
Static rock pressure _____ psig (surface pressure) after _____ hours

Third Producing formation Completion C (Poca No.3)

Gas: Initial open flow _____ Mcf/d
Final open flow _____ Mcf/d

Pay zone depth 958 (ft)
Oil: Initial open flow _____ Bbl/d
Final open flow _____ Bbl/d

Time of open flow between initial and final tests: _____ hours
Static rock pressure _____ psig (surface pressure) after _____ hours

Note: ON BACK OF THIS FORM, PUT THE FOLLOWING: 1) DETAILS OF PERFORATED INTERVALS, FRACTURING OR STIMULATING, PHYSICAL CHANGE, ETC. 2) THE WELL LOG WHICH IS A SYSTEMATICK DETAILED GEOLOGICAL RECORD OF ALL FORMATIONS, INCLUDING COAL ENCOUNTERED BY THE WELLBORE.

Charles T. Akers
For: CDX Gas, LLC
By: Charles T. Akers
Date: 6/9/04

JUN 18 2004

WYO 2343

Operator: 97D-R
 API No. 47- 109- 02343
 Location: Wyoming County

Details of Perforated Intervals, Fracturing or Stimulation, Physical Change, Etc. – N/A

Well Log & Geologic Record - Depths from G.L.

B - Completion

Lithology	Depth in feet	
	Top	Bottom
Casing	0	10
Sandy Shale	10	57
Shale	57	121
Sandy Shale	121	168
Shale	168	220
Coal	220	223
Shale	223	262
Sandy Shale	262	301
Shale	301	311
Coal	311	312
Shale	312	322
Sandy Shale	322	440
Shale	440	472
Sandy Shale	472	491
Shale	491	495
Sandy Shale	495	568
Shale	568	578
Sandy Shale	578	581
Sandstone	581	593
Shale	593	620
Coal	620	621
Shale	621	623
Sandy Shale	623	634
Shale	634	697
Sandy Shale	697	745
Sandstone	745	773
Sandy Shale	773	783
Sandstone	783	801
Sandy Shale	801	842
Shale	842	857
Coal	857	858
Shale	858	871
Sandy Shale	871	887
Sandstone	887	931
Shale	932	935
Sandy Shale	935	949
Shale	949	959
Coal	959	963
Shale	963	975
Sandy Shale	975	1005
End		

C - Completion

Lithology	Depth in feet	
	Top	Bottom
Casing	0	10
Sandy Shale	10	57
Shale	57	121
Sandy Shale	121	168
Shale	168	220
Coal	220	223
Shale	223	262
Sandy Shale	262	301
Shale	301	311
Coal	311	312
Shale	312	322
Sandy Shale	322	440
Shale	440	472
Sandy Shale	472	490
Shale	490	494
Sandy Shale	494	567
Shale	567	577
Sandy Shale	577	580
Sandstone	580	592
Shale	592	619
Coal	619	620
Shale	620	622
Sandy Shale	622	633
Shale	633	696
Sandy Shale	696	744
Sandstone	744	772
Sandy Shale	772	782
Sandstone	782	800
Sandy Shale	800	841
Shale	841	856
Coal	856	857
Shale	857	870
Sandy Shale	870	886
Sandstone	886	930
Shale	930	934
Sandy Shale	934	948
Shale	948	958
Coal	958	962
Shale	962	974
Sandy Shale	974	1007
End		

WYO 2343

JUN 18 2004