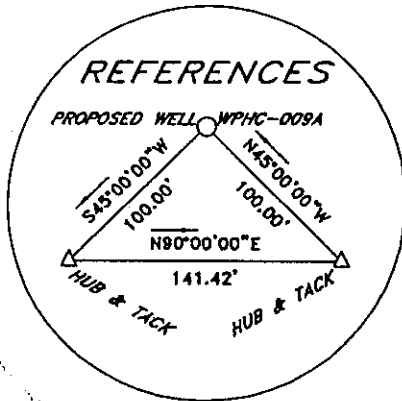
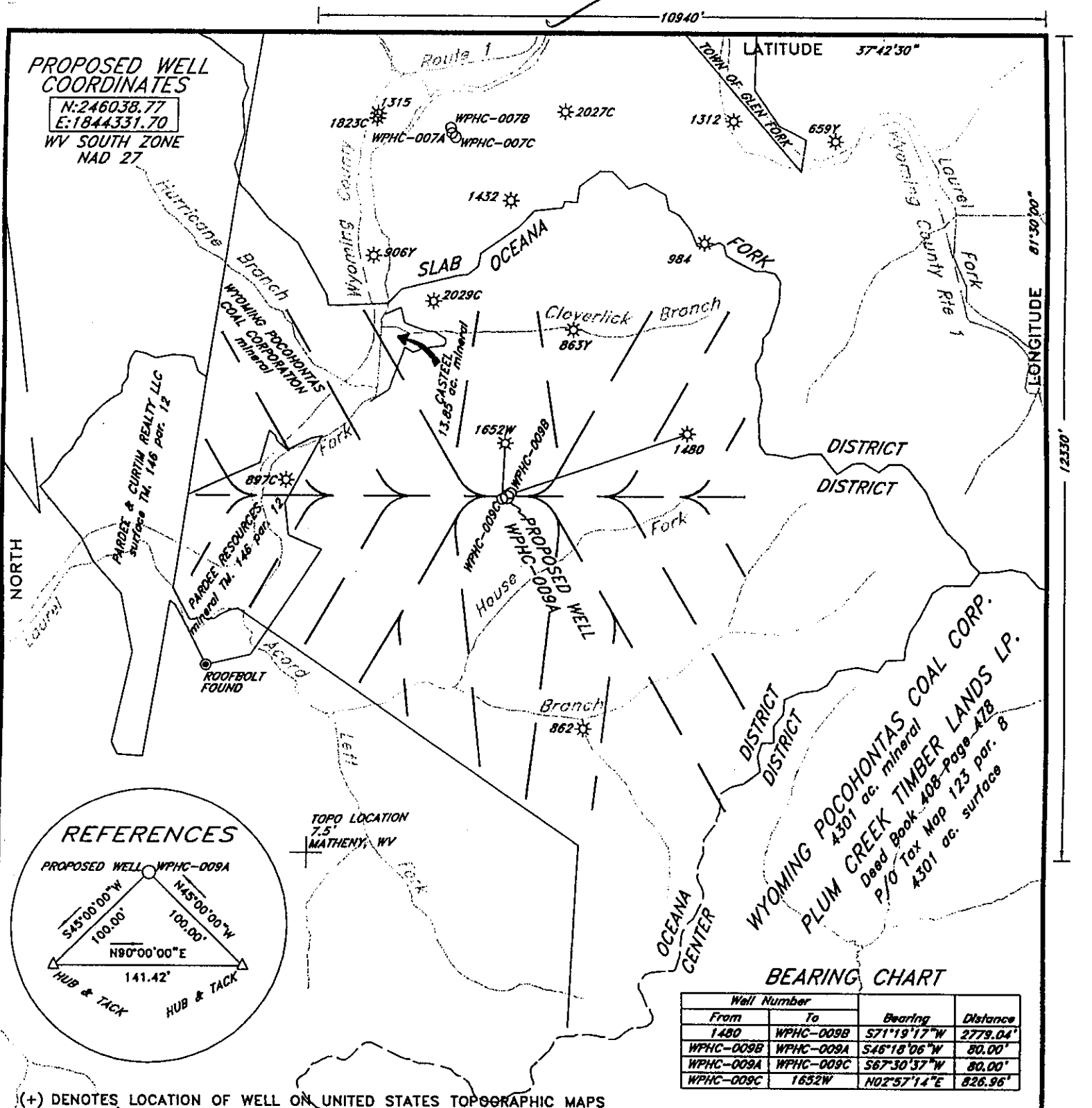


PROPOSED WELL COORDINATES

N:246038.77

E:1844331.70

WV SOUTH ZONE
NAD 27



TOPO LOCATION
7.5'
MATHENY, WV

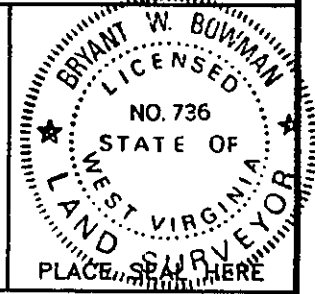
BEARING CHART

Well Number	From	To	Bearing	Distance
1480	WPHC-009B	WPHC-009A	S71°19'17"W	2779.04'
WPHC-009B	WPHC-009A	WPHC-009C	S46°18'06"W	80.00'
WPHC-009A	WPHC-009C	1652W	S67°30'37"W	80.00'
WPHC-009C	1652W		N02°57'14"E	826.96'

(+) DENOTES LOCATION OF WELL ON UNITED STATES TOPOGRAPHIC MAPS

FILE NO. _____
DRAWING NO. _____
SCALE 1"=2000'
MINIMUM DEGREE OF ACCURACY 1:20000
PROVEN SOURCE OF ELEVATION GPS DISK NO. 1
ELEVATION 2347.149

I THE UNDERSIGNED, HEREBY CERTIFY THAT THIS PLAT IS CORRECT TO THE BEST OF MY KNOWLEDGE AND BELIEF AND SHOWS ALL THE INFORMATION REQUIRED BY LAW AND THE REGULATIONS ISSUED AND PRESCRIBED BY THE DEPARTMENT OF ENVIRONMENTAL PROTECTION.
(SIGNED) Bryant W. Bowman
R.P.E. _____ L.L.S. 736



STATE OF WEST VIRGINIA
DEPARTMENT OF ENVIRONMENTAL PROTECTION
OIL AND GAS DIVISION

DATE AUGUST 6, 2003
OPERATOR'S WELL NO. WPHC-009A
API WELL NO. _____

WELL TYPE: OIL GAS LIQUID INJECTION WASTE DISPOSAL
(IF "GAS,") PRODUCTION STORAGE DEEP SHALLOW

LOCATION: ELEVATION 2203.00' WATERSHED HOUSE FORK OF ACCORD BRANCH OF LAUREL FORK
DISTRICT OCEANA COUNTY WYOMING
QUADRANGLE MATHENY, WV

SURFACE OWNER PLUM CREEK TIMBER LANDS LP. ACREAGE 30000±
OIL & GAS ROYALTY OWNER PENN VIRGINIA OIL & GAS CORPORATION LEASE ACREAGE 30000±
LEASE NO. _____

PROPOSED WORK: DRILL CONVERT DRILL DEEPER REDRILL FRACTURE OR STIMULATE PLUG OFF OLD FORMATION PERFORATE NEW FORMATION OTHER PHYSICAL CHANGE IN WELL (SPECIFY) _____

PLUG AND ABANDON CLEAN OUT AND REPLUG

TARGET FORMATION _____ ESTIMATED DEPTH 1485

WELL OPERATOR PENN VIRGINIA OIL & GAS CORPORATION DESIGNATED AGENT MR. HARRY JEWEL
ADDRESS 2550 EAST STONE DRIVE SUITE 110 ADDRESS PO BOX 460
KINGSPORT, TN 37660 RAVENCLIFF, WV 25913

COUNTY NAME WYO
PERMIT 2328 C

6060

SEP 25 2003

State of West Virginia
Division of Environmental Production
Section of Oil and Gas
Well Operator's Report of Well Work

Farm Name Georgia Pacific Corporation

Operator Well No.: WPHC-009A

LOCATION: Elevation: 2203

Quadrangle: Matheny 7 1/2'

District: Oceana County: Wyoming
Latitude: 12330 Feet South of 37 Deg. 42 Min. 30 Sec.
Longitude: 10940 Feet West of 81 Deg. 30 Min. 00 Sec.

Company:

Penn Virginia Oil & Gas Corporation

	Casing and Tubing	Used in drilling	Left in well	Cement fill up Cu. Ft.
Address: 2550 East Stone Drive, Suite 110	13 3/8"	32'	32'	0
Kingsport, TN 37660	9 5/8"	230'	230'	90
Agent: Harry Jewell	7"	940'	940'	135
Inspector: Ralph Triplett				
Date Permit Issued: 09/22/2003				
Date Well Work Commenced: 09/30/2003				
Date Well Work Completed: 07/17/2004				
Verbal Plugging:				
Date Permission granted on:				
Rotary X Cable Rig				
Total Depth (feet): 950				
Fresh Water Depth (ft):				
Salt Water Depth (ft):				
Is coal being mined in area (N/Y)?				
Coal Depths (ft):				

OPEN FLOW DATA

Producing formation Production via 009B&C Pay zone depth (ft) _____

Gas: Initial open flow _____ MCF/d Oil: Initial open flow _____ Bbl/d
 Final open flow _____ MCF/d Final open flow _____ Bbl/d
 Time of open flow between initial and final tests: _____ Hours
 Static rock pressure _____ psig (surface pressure) after _____ Hours

Second producing formation _____ Pay zone depth (ft) _____

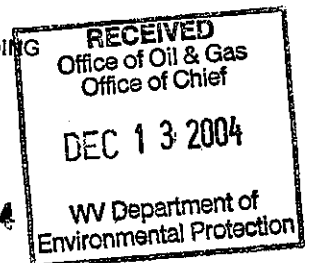
Gas: Initial open flow _____ MCF/d Oil: Initial open flow _____ Bbl/d
 Final open flow _____ MCF/d Final open flow _____ Bbl/d
 Time of open flow between initial and final tests: _____ Hours
 Static rock pressure _____ psig (surface pressure) after _____ Hours

NOTE: ON BACK OF THIS FORM PUT THE FOLLOWING: 1). DETAILS OF PERFORATED INTERVALS, FRACTURING OR STIMULATING, PHYSICAL CHANE, TEC. 2). THE WELL LOG WHICH IS A SYSTEMATIC DETAILED GEOLOGICAL RECORD OF ALL FORMATIONS, INCLUDING COAL ENCOUNTERED BY THE WELLBORE.

Signed:

By: Michael S. Hanger
Date: 12/09/2004

DEC 30 2004



WYO 2328 C

DETAILS OF PERFORATIONS, FRACTURING, OR PHYSICAL CHANGE, ETC.

<u>FORMATIONS</u>	<u>TOP (TVD)</u>	<u>BOTTOM (TVD)</u>	<u>REMARKS</u>
Sandstone, Shale & Coal	0	1243.63	
Lower Beckley Coal w/ Shale	1243.63	1248.13	Drilled Horizontal
Sandstone & Shale	1248.13	1295.49	
Fire Creek Coal	1295.49		Drilled Directional
Sandstone & Shale			
Pocahontas #6 Coal	1423.21	1424.71	Drilled Horizontal