

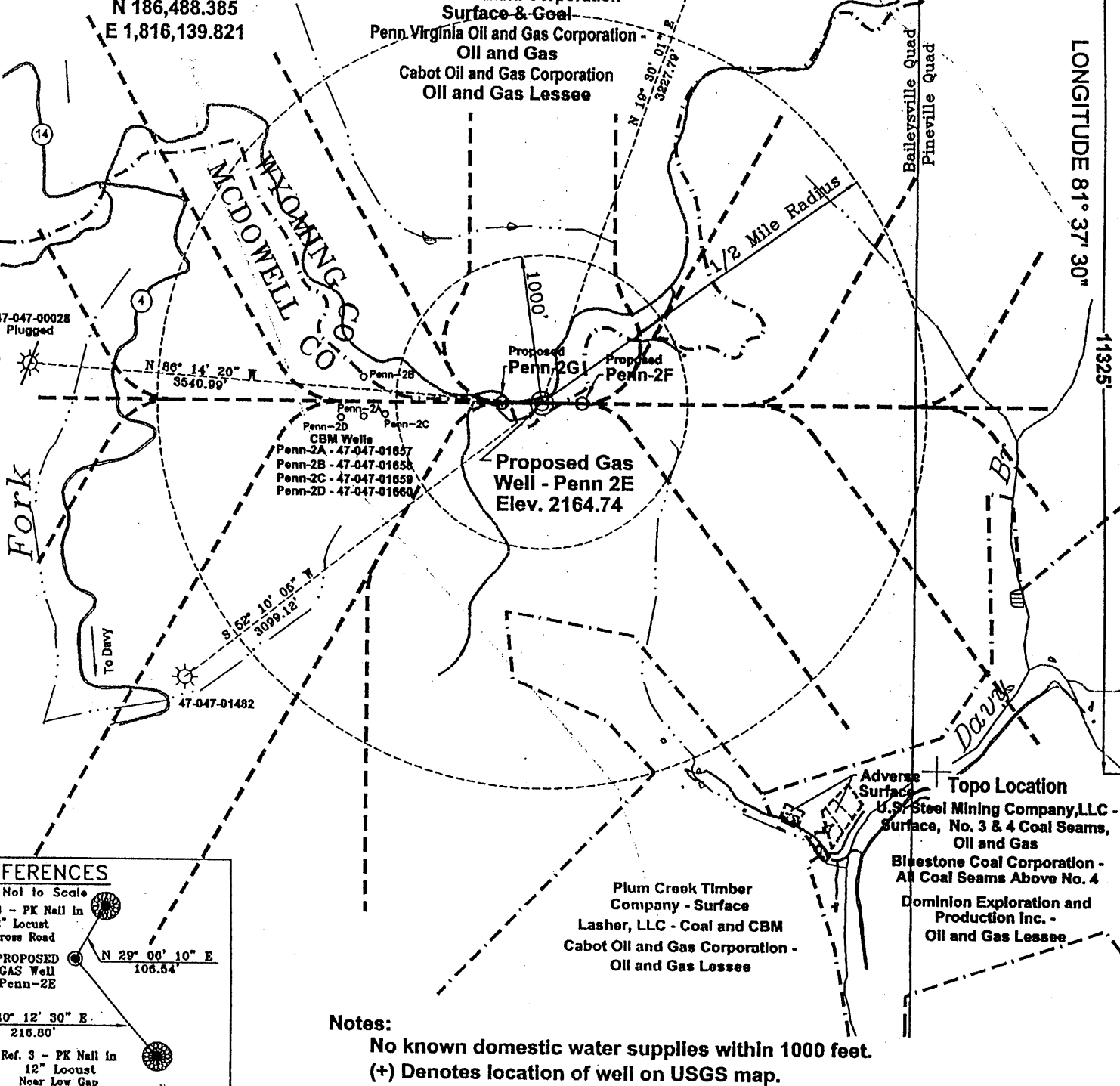
West Virginia State Plane Coordinates
NAD 27

N 186,488.385
E 1,816,139.821

LATITUDE 37° 32' 30"

LONGITUDE 81° 37' 30"

Pocahontas Land Corporation -
Surface & Goal
Penn. Virginia Oil and Gas Corporation -
Oil and Gas
Cabot Oil and Gas Corporation
Oil and Gas Lessee



Proposed Gas Well - Penn 2E
Elev. 2164.74

Proposed Penn-2G1
Proposed Penn-2F

CBM Wells
Penn-2A - 47-047-01657
Penn-2B - 47-047-01658
Penn-2C - 47-047-01659
Penn-2D - 47-047-01660

Adverse Surface
U.S. Steel Mining Company, LLC -
Surface, No. 3 & 4 Coal Seams,
Oil and Gas
Bluestone Coal Corporation -
All Coal Seams Above No. 4
Dominion Exploration and
Production Inc. -
Oil and Gas Lessee

Plum Creek Timber
Company - Surface
Lasher, LLC - Coal and CBM
Cabot Oil and Gas Corporation -
Oil and Gas Lessee

Notes:

No known domestic water supplies within 1000 feet.
(+) Denotes location of well on USGS map.

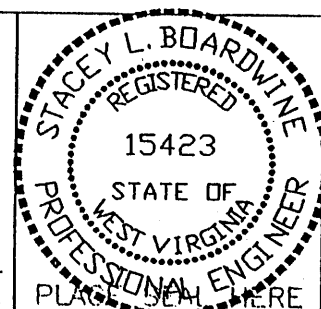
REFERENCES

Not to Scale
Ref. 4 - PK Nail in
12" Locust
Across Road
PROPOSED
GAS Well
Penn-2E
N 29° 06' 10" E
106.54'
S 40° 12' 30" E
216.80'
Ref. 3 - PK Nail in
12" Locust
Near Low Gap

FILE No. CDXGAS
DRAWING NAME \CDX-2003\PlatPenn-2E
DRAWING NAME PlatPenn-2E
SCALE 1" = 1000'
MINIMUM DEGREE OF
ACCURACY 1 : 2500
PROVEN SOURCE OF
ELEVATION GPS - GLOBAL
POSITIONING SYSTEM

I THE UNDERSIGNED, HEREBY CERTIFY THAT
THIS PLAT IS CORRECT TO THE BEST OF MY
KNOWLEDGE AND BELIEF AND SHOWS ALL THE
INFORMATION REQUIRED BY LAW AND THE REGU-
LATIONS ISSUED AND PRESCRIBED BY THE
DEPARTMENT OF MINES.

(SIGNED) Stacy L Beardwine
R.P.E. 15423 R.P.S. _____



STATE OF WEST VIRGINIA
DEPARTMENT OF ENVIRONMENTAL PROTECTION
OFFICE OF OIL AND GAS
CHARLESTON, WV

DATE May 20, 2003
OPERATOR'S WELL No. Penn-2E
API WELL No.
47 - 109 - 02290-C
STATE COUNTY PERMIT

WELL TYPE: OIL GAS CBM LIQUID INJECTION WASTE DISPOSAL
(IF "GAS") PRODUCTION X STORAGE DEEP SHALLOW
LOCATION: ELEVATION 2164.74 WATER SHED UNNAMED TRIBUTARY OF BRIER CREEK OF INDIAN CREEK
DISTRICT BAILEYSVILLE COUNTY WYOMING
QUADRANGLE BAILEYSVILLE, WV

SURFACE OWNER POCAHONTAS LAND CORPORATION ACREAGE 5,296.08
CBM ROYALTY OWNER PENN VIRGINIA OIL AND GAS CORPORATION LEASE ACREAGE
U.S. STEEL MINING COMPANY, LLC
LEASE No. _____

PROPOSED WORK: DRILL X CONVERT DRILL DEEPER REDRILL FRACTURE OR
STIMULATE PLUG OFF OLD FORMATION PERFORATE NEW
FORMATION OTHER PHYSICAL CHANGE IN WELL (SPECIFY)

PLUG AND ABANDON CLEAN OUT AND REPLUG
TARGET FORMATION POCAHONTAS NO. 3 AND PENN. COALS ESTIMATED DEPTH 1422'
WELL OPERATOR CDX GAS, LLC DESIGNATED AGENT JOSEPH ZUPANICK 2003
ADDRESS P.O. BOX 609 ADDRESS P.O. BOX 609
PINEVILLE, WV 24874 PINEVILLE, WV 24874

WYO 2290 C

State of West Virginia
Division of Environmental Protection
Section of Oil & Gas

M 19

Well Operator's Report of Well Work

Farm name: Pocahontas Land Corp.

Operator Well No: Penn2E

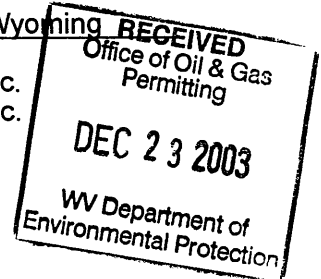
Location: Elevation: 2166'

Quadrangle: Baileysville

District: Baileysville

County: Wyoming

Latitude: 11325 Feet South of 37 Deg. 32 Min. 30 Sec.
Longitude: 2590 Feet West of 81 Deg. 37 Min. 30 Sec.



Company: CDX Gas, LLC
P.O. Box 609
Pineville, WV 24874

Agent: JOSEPH A. ZUPANICK

Inspector: Ronnie Scott
Permit Issued: 7/3/2003
Well Work commenced: 8/13/03
Well Work completed: 10/24/03
Verbal plugging
Permission granted on:
Rotary x Cable _____ Rig
Total depth (ft) 1268'
Fresh water depths (ft) N/A
Salt water depths (ft) N/A
Is coal being mined in the area (Y/N)? Y
Coal depths (ft): 114,154,209,331,359,389,695
768,1042,1162

Casing & Tubing Size	Used in Drilling	Left in Well	Cement Fill up
16"	36'	36'	10 cuft
9 5/8"	759'	759'	237cuft
7"	1202'	1202'	181 cuft

OPEN FLOW DATA

Producing formation Non Producer Pay zone depth (ft)
 Gas: Initial open flow N/A Mcf/d Oil: Initial open flow _____ Bbl/d
 Final open flow N/A Mcf/d Final open flow _____ Bbl/d
 Time of open flow between initial and final tests: _____ hours
 Static rock pressure _____ psig (surface pressure) after _____ hours

Second Producing formation _____ Pay zone depth (ft)
 Gas: Initial open flow _____ Mcf/d Oil: Initial open flow _____ Bbl/d
 Final open flow _____ Mcf/d Final open flow _____ Bbl/d
 Time of open flow between initial and final tests: _____ hours
 Static rock pressure _____ psig (surface pressure) after _____ hours

Note: ON BACK OF THIS FORM, PUT THE FOLLOWING: 1) DETAILS OF PERFORATED INTERVALS, FRACTURING OR STIMULATING, PHYSICAL CHANGE, ETC. 2) THE WELL LOG WHICH IS A SYSTEMATICK DETAILED GEOLOGICAL RECORD OF ALL FORMATIONS, INCLUDING COAL ENCOUNTERED BY THE WELLBORE.

For: Steven Pauley
CDX Gas, LLC
By: Steven Pauley
Date: 12-19-03

FEB 27 2004

WYO 2290 C

Operator: Penn2E
 API No. 47- 109-02290 C
 Location: Wyoming County

Details of Perforated Intervals, Fracturing or Stimulation, Physical Change, Etc. N/A
 Well Log & Geologic Record - Depths from G.L.

Lithology	Depth in feet	
	Top	Bottom
Casing	0	21
Sandstone	21	56
Shale	56	75
Sandy Shale	75	96
Shale	96	114
Coal	114	115
Shale	115	154
Coal	154	155
Shale	155	190
Sandy Shale	190	205
Shale	205	209
Coal	209	210
Shale	210	260
Sandy Shale	260	309
Shale	309	331
Coal	331	333
Shale	333	336
Sandy Shale	336	359
Coal	359	360
Shale	360	368
Sandy Shale	368	378
Shale	378	389
Coal	389	391
Shale	391	455
Sandy Shale	455	526
Shale	526	580
Sandy Shale	580	625
Shale	625	643
Sandy Shale	643	665
Shale	665	695
Coal	695	697
Sandy Shale	697	768
Coal	768	769
Sandy Shale	769	834
Shale	834	852
Sandstone	852	895
Shale	895	943
Sandy Shale	943	981
Sandstone	981	1013
Shale	1013	1042
Coal	1042	1044
Shale	1044	1087
Sandy Shale	1087	1162
Coal	1162	1163
Sandy Shale	1163	1240
Sandstone	1240	1258
End of Hole		

