

WW-7
8-30-06

4710902279P



West Virginia Department of Environmental Protection
Office of Oil and Gas
WELL LOCATION FORM: GPS

API: 4710902279 WELL NO.: LCHC 001A

FARM NAME: Pocahontas Land Corp.

RESPONSIBLE PARTY NAME: Diversified Production, LLC

COUNTY: Wyoming DISTRICT: Oceana

QUADRANGLE: Pilot Knob 7.5'

SURFACE OWNER: Pocahontas Surface Interests, LLC

ROYALTY OWNER: Penn Virginia Oil & Gas Corporation

UTM GPS NORTHING: 4178417.61

UTM GPS EASTING: 452667.66 GPS ELEVATION: 2148.66'

The Responsible Party named above has chosen to submit GPS coordinates in lieu of preparing a new well location plat for a plugging permit or assigned API number on the above well. The Office of Oil and Gas will not accept GPS coordinates that do not meet the following requirements:

1. Datum: NAD 1983, Zone: 17 North, Coordinate Units: meters, Altitude: height above mean sea level (MSL) – meters.
2. Accuracy to Datum – 3.05 meters
3. Data Collection Method:

Survey grade GPS _____: Post Processed Differential _____

Real-Time Differential _____

Mapping Grade GPS X: Post Processed Differential X

Real-Time Differential _____

4. **Letter size copy of the topography map showing the well location.**

I the undersigned, hereby certify this data is correct to the best of my knowledge and belief and shows all the information required by law and the regulations issued and prescribed by the Office of Oil and Gas.

Chris Veazey
Signature

Chris Veazey - Director of Administration
Title

4/19/24
Date

RECEIVED
Office of Oil and Gas

MAY 16 2024

06/21/2024








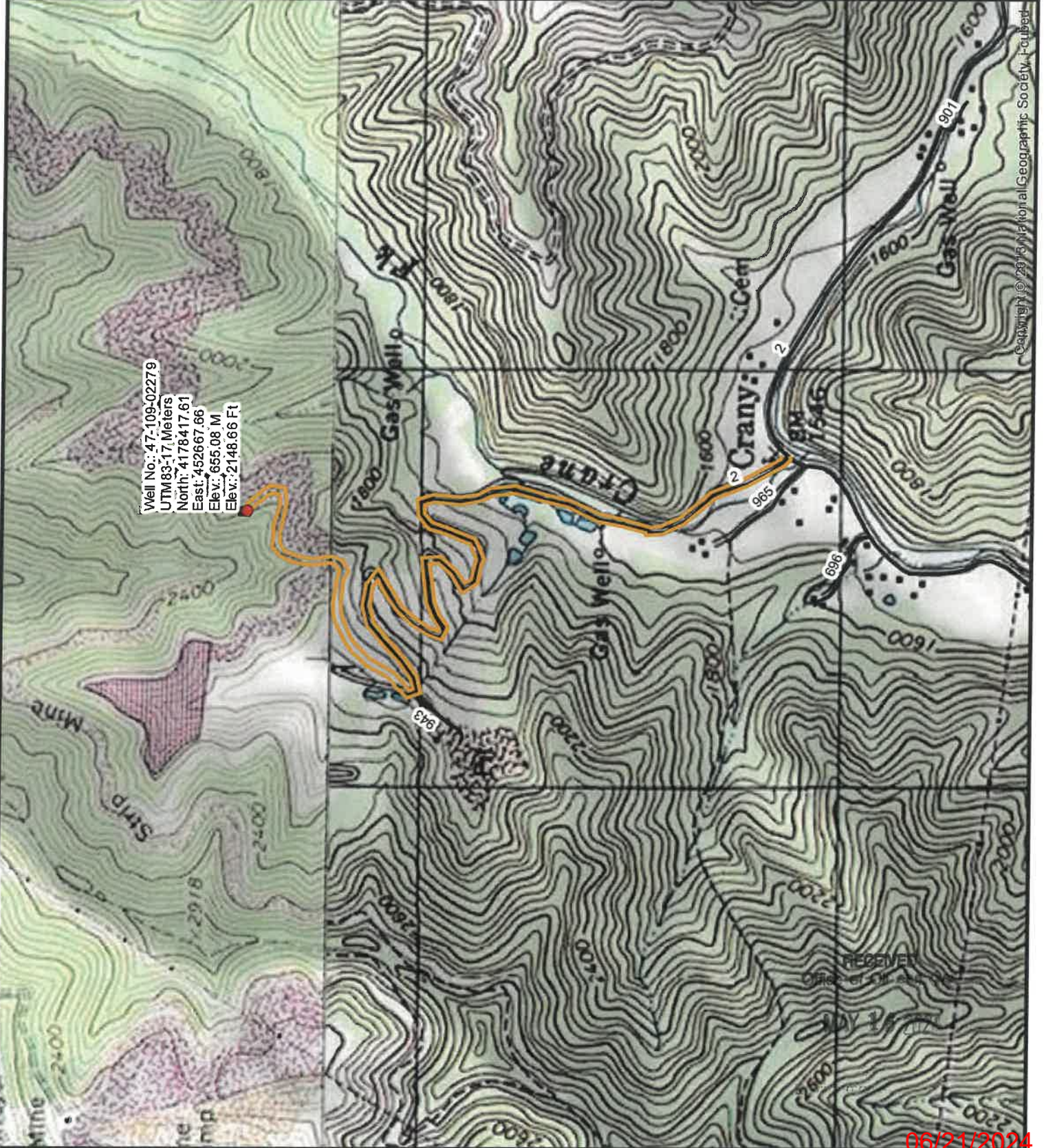
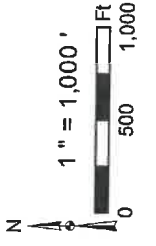
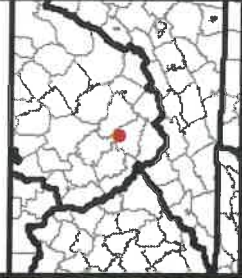
Diversified Gas & Oil Corporation
100 Diversified Way
Pikeville KY, 41051

47-109-02279

Well Plugging Map

Legend

-  Well
-  Access Road
-  Pits
-  Pad
-  Public Roads



Copyright © 2013, National Geographic Society, Inc.