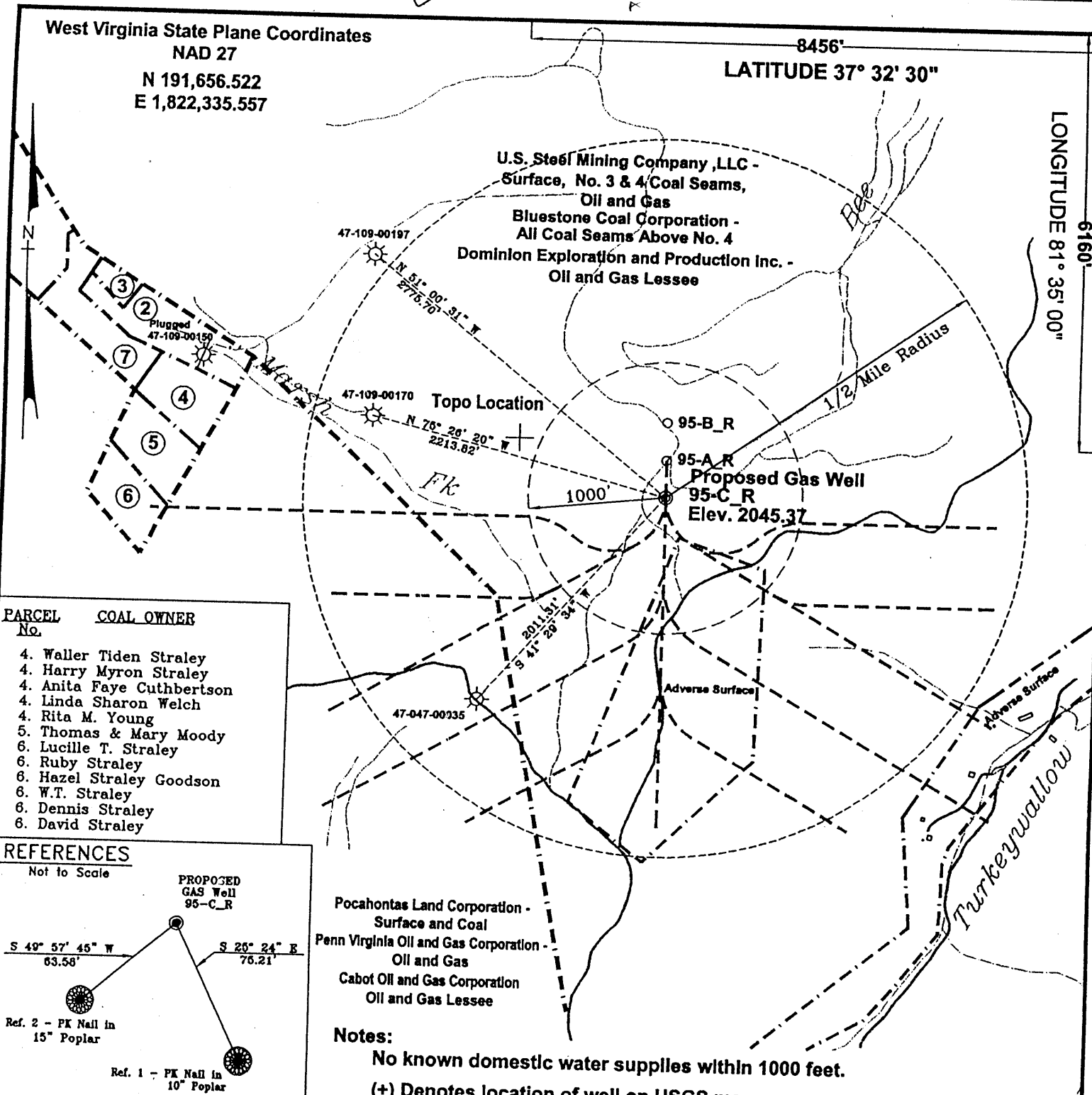


West Virginia State Plane Coordinates
NAD 27

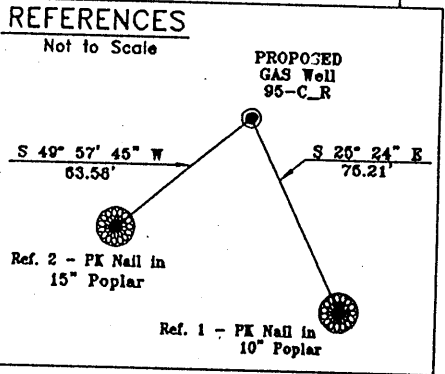
N 191,656.522
E 1,822,335.557

8456"
LATITUDE 37° 32' 30"

LONGITUDE 81° 35' 00"



PARCEL No.	COAL OWNER
4.	Waller Tiden Straley
4.	Harry Myron Straley
4.	Anita Faye Cuthbertson
4.	Linda Sharon Welch
4.	Rita M. Young
5.	Thomas & Mary Moody
6.	Lucille T. Straley
6.	Ruby Straley
6.	Hazel Straley Goodson
6.	W.T. Straley
6.	Dennis Straley
6.	David Straley



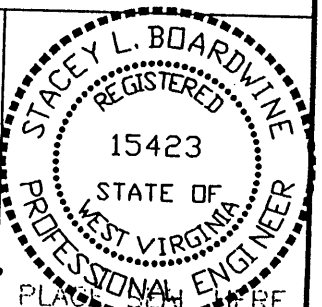
Pocahontas Land Corporation - Surface and Coal
Penn Virginia Oil and Gas Corporation - Oil and Gas
Cabot Oil and Gas Corporation - Oil and Gas Lessee

Notes:
No known domestic water supplies within 1000 feet.
(+) Denotes location of well on USGS map.

FILE No. CDXGAS
DRAWING NAME \CDX-2003\PLAT 95-C_R
DRAWING NAME Plat95-C_R
SCALE 1" = 1000'
MINIMUM DEGREE OF ACCURACY 1 : 2500
PROVEN SOURCE OF ELEVATION GPS - GLOBAL POSITIONING SYSTEM

I THE UNDERSIGNED, HEREBY CERTIFY THAT THIS PLAT IS CORRECT TO THE BEST OF MY KNOWLEDGE AND BELIEF AND SHOWS ALL THE INFORMATION REQUIRED BY LAW AND THE REGULATIONS ISSUED AND PRESCRIBED BY THE DEPARTMENT OF MINES.

(SIGNED) Stacey L Boardwine
R.P.E. 10423 R.P.S. _____



STATE OF WEST VIRGINIA
DEPARTMENT OF ENVIRONMENTAL PROTECTION
OFFICE OF OIL AND GAS
CHARLESTON, WV

DATE May 01, 2003
OPERATOR'S WELL No. 95-C_R
API WELL No. 47 - 109 - 02276C
STATE COUNTY PERMIT

WELL TYPE: OIL GAS CBM LIQUID INJECTION WASTE DISPOSAL
(IF "GAS") PRODUCTION X STORAGE DEEP SHALLOW
LOCATION: ELEVATION 2045.37 WATER SHED BEE BRANCH OF INDIAN CREEK
DISTRICT CENTER COUNTY WYOMING
QUADRANGLE PINEVILLE, WV

SURFACE OWNER U.S. STEEL MINING COMPANY, LLC ACREAGE 33,742.55
CBM ROYALTY OWNER U.S. STEEL MINING COMPANY, LLC LEASE ACREAGE _____
PENN VIRGINIA OIL AND GAS CORPORATION
LEASE No. _____

PROPOSED WORK: DRILL X CONVERT DRILL DEEPER REDRILL FRACTURE OR STIMULATE PLUG OFF OLD FORMATION PERFORATE NEW FORMATION OTHER PHYSICAL CHANGE IN WELL (SPECIFY) _____

PLUG AND ABANDON CLEAN OUT AND REPLUG
TARGET FORMATION POCAHONTAS NO. 3 AND PENN. COALS ESTIMATED DEPTH 1330'
WELL OPERATOR CDX GAS, LLC DESIGNATED AGENT JOSEPH ZUPANICK
ADDRESS P.O. BOX 609 ADDRESS P.O. BOX 609
PINEVILLE WV 26074 (Pineville 272)

WYO 2276C

State of West Virginia
Division of Environmental Protection
Section of Oil & Gas

MB

Well Operator's Report of Well Work

Farm name: U.S. Steel Mining Company

Operator Well No: 95-C-R

Location: Elevation: 2045.37'

Quadrangle: Pineville

District: Center

County: Wyoming

Latitude: 8456 Feet South of 37 Deg. 32 Min. 30 Sec.
Longitude: 6160 Feet West of 81 Deg. 35 Min. 00 Sec.

Company: CDX Gas, LLC
P.O. Box 609
Pineville, WV 24874

Agent: JOSEPH A. ZUPANICK

Inspector: Ronnie Scott
Permit Issued: 6/4/03
Well Work commenced: 7/31/03
Well Work completed: 9/11/03

Verbal plugging
Permission granted on:
Rotary x Cable _____ Rig
Total depth (ft) 1315'
Fresh water depths (ft) N/A
Salt water depths (ft) N/A

Is coal being mined in the area (Y/N)? Y
Coal depths (ft): 324', 397', 689', 1181', 1259', 1261',
1270', 1291'

Casing & Tubing Size	Used in Drilling	Left in Well	Cement Fill up
13 3/8"	32'	32'	22
9 5/8"	616'	616'	193
7"	1194'	1194'	180
2 7/8"	1270	1270	Hanging

RECEIVED
Office of Oil & Gas
Office of Chief
OCT - 9 2003
WV Department of
Environmental Protection

OPEN FLOW DATA

Producing formation Pocahontas No.3 seam

Pay zone depth (ft) 1270'

Gas: Initial open flow N/A Mcf/d
Final open flow N/A Mcf/d

Oil: Initial open flow _____ Bbl/d
Final open flow _____ Bbl/d

Time of open flow between initial and final tests: _____ hours

Static rock pressure _____ psig (surface pressure) after _____ hours

Second Producing formation _____

Pay zone depth _____ (ft)

Gas: Initial open flow _____ Mcf/d
Final open flow _____ Mcf/d

Oil: Initial open flow _____ Bbl/d
Final open flow _____ Bbl/d

Time of open flow between initial and final tests: _____ hours

Static rock pressure _____ psig (surface pressure) after _____ hours

Note: ON BACK OF THIS FORM, PUT THE FOLLOWING: 1) DETAILS OF PERFORATED INTERVALS, FRACTURING OR STIMULATING, PHYSICAL CHANGE, ETC. 2) THE WELL LOG WHICH IS A SYSTEMATICK DETAILED GEOLOGICAL RECORD OF ALL FORMATIONS, INCLUDING COAL ENCOUNTERED BY THE WELLBORE.

For: Steven Pauley
CDX Gas, LLC

By: Steven Pauley

Date: 10-6-03

NOV 1 2003

WYO 2276 C

Operator: 95-C-R
 API No. 47- 109-02276C
 Location: Wyoming County

Details of Perforated Intervals, Fracturing or Stimulation, Physical Change, Etc. – N/A

Well Log & Geologic Record - Depths from G.L.

Lithology	Depth in feet	
	Top	Bottom
Casing	0	20
Sandy Shale	20	94
Sandstone	94	101
Shale	101	159
Sandy Shale	159	308
Shale	308	324
Coal	324	325
Sandy Shale	325	397
Coal	397	398
Shale	398	431
Sandy Shale	431	490
Shale	490	544
Sandstone	544	574
Sandy Shale	574	689
Coal	689	690
Shale	690	705
Sandy Shale	705	755
Shale	755	795
Sandy Shale	795	885
Shale	885	938
Sandy Shale	938	1040
Sandstone	1040	1164
Shale	1164	1178
Sandy Shale	1178	1181
Coal	1181	1183
Sandy Shale	1183	1259
Coal	1259	1260
Sandy Shale	1260	1261
Coal	1261	1262
Shale	1262	1270
Coal	1270	1275
Sandy Shale	1275	1291
Coal	1291	1293
Sandy Shale	1293	1315
End		