



Diversified Gas & Oil Corporation
 100 Diversified Way
 Pikeville KY, 41051

47-109-02219

Plugging Map

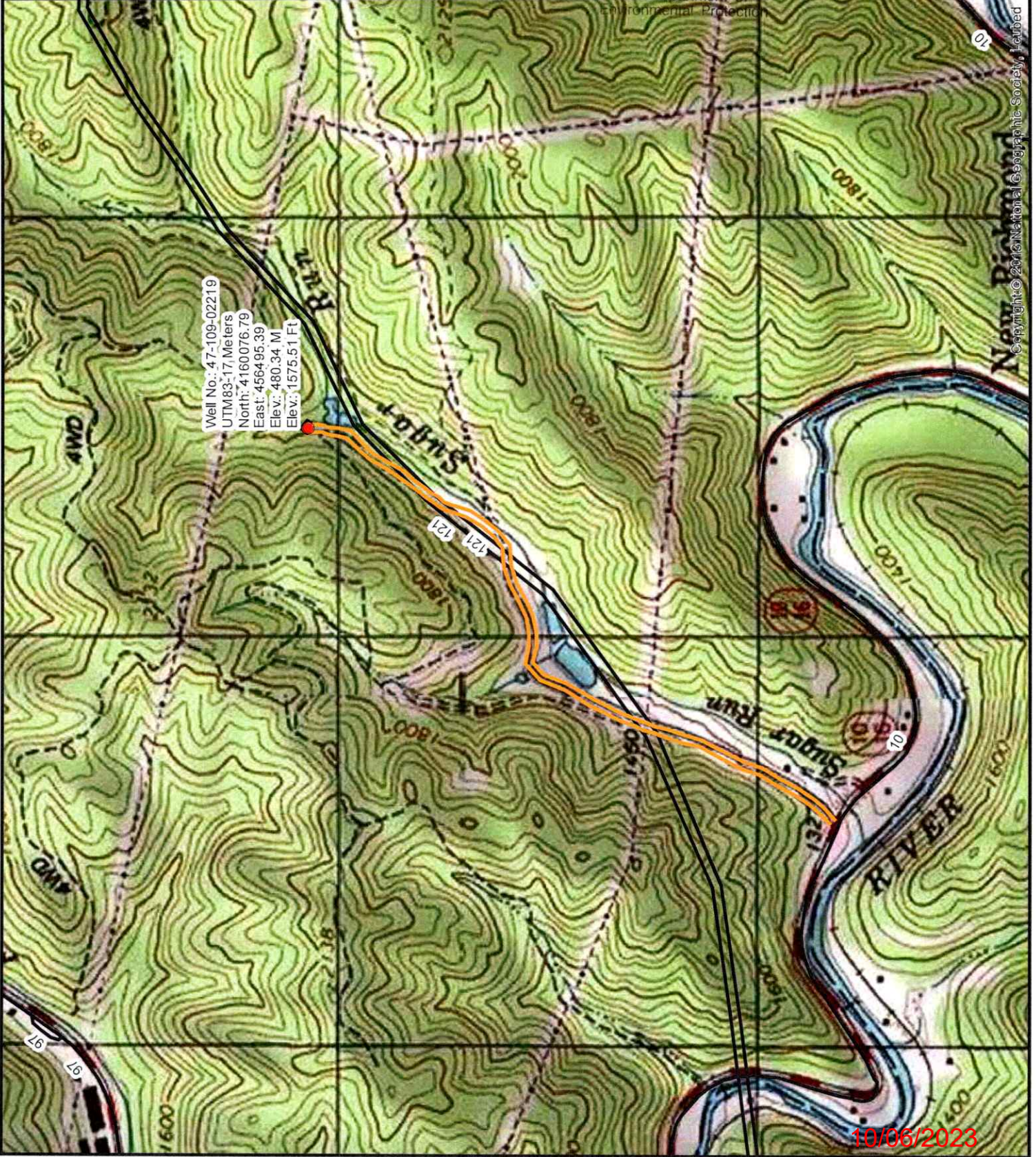
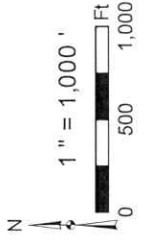
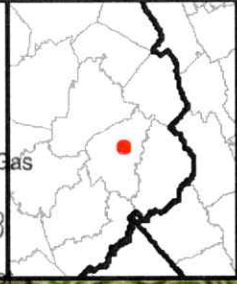
Legend

- Well
- Access Road
- Pits
- Pad
- Public Roads

RECEIVED
 Office of Oil and Gas

SEP 15 2023

WV Department of
 Environmental Protection



Well No.: 47-109-02219
 UTM83-17 Meters
 North: 4160076.79
 East: 456495.39
 Elev.: 480.34 M
 Elev.: 1575.51 Ft

Copyright © 2013 National Geographic Society, Inc.

10/06/2023








Diversified Gas & Oil Corporation
100 Diversified Way
Pikeville KY, 41051

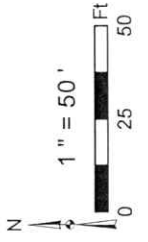
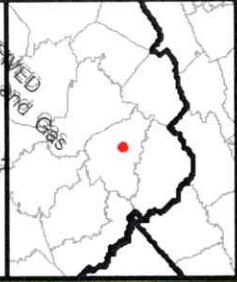
47-109-02219

Plugging Map

Legend

-  Well
-  Access Road
-  Pits
-  Pad
-  Public Roads

RECEIVED
Office of Oil and Gas
SEP 15 2023
WV Department of Environmental Protection



Primary Pit

Secondary Pit

Well No.: 47-109-02219
UTM83-17, Meters
North: 4160076.79
East: 456495.39
Elev.: 480.34 M
Elev.: 1575.51 Ft

Source: Esri, Maxar, Earthstar Geographics, and the Geo User Community

10/06/2023

WW-7
8-30-06



West Virginia Department of Environmental Protection
Office of Oil and Gas
WELL LOCATION FORM: GPS

API: 4710902219 WELL NO.: POCA B-71

FARM NAME: Pocahontas Land Corporation

RESPONSIBLE PARTY NAME: Diversified Production, LLC

COUNTY: Wyoming DISTRICT: Center

QUADRANGLE: Mullens 7.5'

SURFACE OWNER: Pocahontas Surface Interests, LLC - c/o Pocahontas Royalties, LLC

ROYALTY OWNER: Penn Virginia Oil & Gas Corporation

UTM GPS NORTHING: 4160076.79

UTM GPS EASTING: 456495.39 GPS ELEVATION: 1575.51'

The Responsible Party named above has chosen to submit GPS coordinates in lieu of preparing a new well location plat for a plugging permit or assigned API number on the above well. The Office of Oil and Gas will not accept GPS coordinates that do not meet the following requirements:

- Datum: NAD 1983, Zone: 17 North, Coordinate Units: meters, ~~Attitude~~ ^{Office of Oil and Gas} height above mean sea level (MSL) – meters.
- Accuracy to Datum – 3.05 meters
- Data Collection Method:
Survey grade GPS ____ : Post Processed Differential ____
Real-Time Differential ____
Mapping Grade GPS X : Post Processed Differential X
Real-Time Differential ____

RECEIVED
Office of Oil and Gas
SEP 15 2023
WV Department of
Environmental Protection

4. **Letter size copy of the topography map showing the well location.**

I the undersigned, hereby certify this data is correct to the best of my knowledge and belief and shows all the information required by law and the regulations issued and prescribed by the Office of Oil and Gas.


Signature

Chris Veazey - Permitting Supervisor
Title

09/11/23
Date

10/06/2023