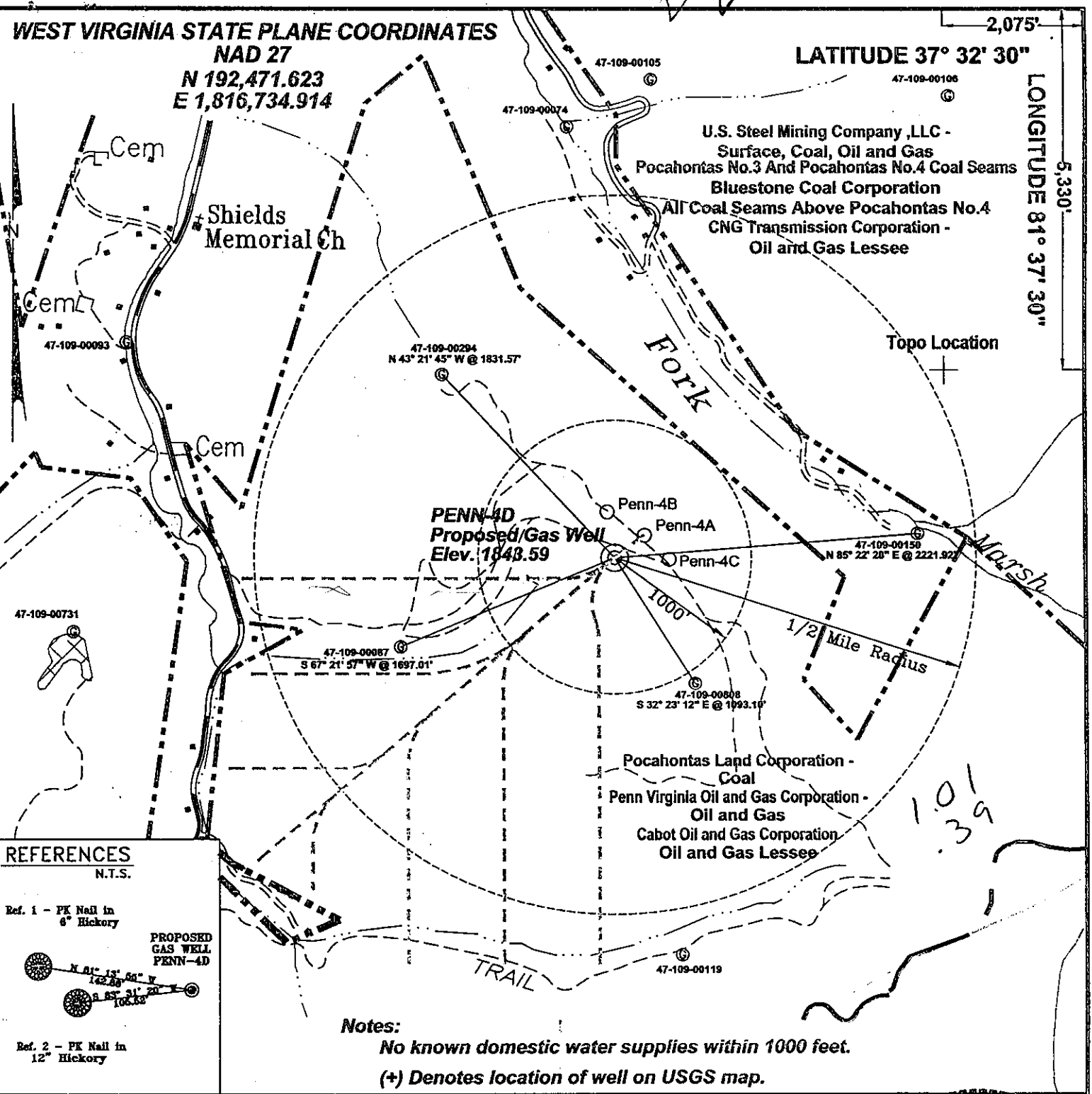


**WEST VIRGINIA STATE PLANE COORDINATES  
NAD 27  
N 192,471.623  
E 1,816,734.914**

**LATITUDE 37° 32' 30"**

**LONGITUDE 81° 37' 30"**



**PENN-4D  
Proposed Gas Well  
Elev. 1843.59**

**U.S. Steel Mining Company, LLC -  
Surface, Coal, Oil and Gas  
Pocahontas No.3 And Pocahontas No.4 Coal Seams  
Bluestone Coal Corporation  
All Coal Seams Above Pocahontas No.4  
CNG Transmission Corporation -  
Oil and Gas Lessee**

**Pocahontas Land Corporation -  
Coal  
Penn Virginia Oil and Gas Corporation -  
Oil and Gas  
Cabot Oil and Gas Corporation  
Oil and Gas Lessee**

**REFERENCES  
N.T.S.**

Ref. 1 - PK Nail in 6" Hickory

Ref. 2 - PK Nail in 12" Hickory

**PROPOSED GAS WELL PENN-4D**

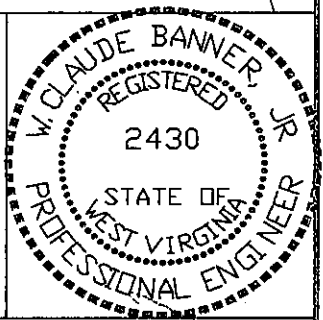
N 61° 13' 55" E 142.88'  
S 67° 31' 20" E 106.52'

**Notes:**  
No known domestic water supplies within 1000 feet.  
(+) Denotes location of well on USGS map.

FILE No. CDXGAS  
DRAWING NAME CDXGAS\PLAT  
DRAWING NAME PENN-4D  
SCALE 1" = 1000'  
MINIMUM DEGREE OF ACCURACY 1 : 2500  
PROVEN SOURCE OF ELEVATION GPS - GLOBAL POSITIONING SYSTEM

I THE UNDERSIGNED, HEREBY CERTIFY THAT THIS PLAT IS CORRECT TO THE BEST OF MY KNOWLEDGE AND BELIEF AND SHOWS ALL THE INFORMATION REQUIRED BY LAW AND THE REGULATIONS ISSUED AND PRESCRIBED BY THE DEPARTMENT OF MINES.

(SIGNED) *Claude Banner Jr*  
R.P.E. 2430 R.P.S.



**STATE OF WEST VIRGINIA  
DIVISION OF ENVIRONMENTAL PROTECTION  
OFFICE OF OIL AND GAS  
NITRO, WV**

DATE September 4, 2001  
OPERATOR'S WELL No. PENN-4D  
API WELL No. 47 - 109 - 02100C  
STATE COUNTY PERMIT

WELL TYPE: OIL GAS CBM LIQUID INJECTION WASTE DISPOSAL  
(IF "GAS") PRODUCTION X STORAGE DEEP SHALLOW  
LOCATION: ELEVATION 1843.59 WATER SHED TRIBUTARY OF BRIER CREEK  
DISTRICT BAILEYSVILLE COUNTY WYOMING  
QUADRANGLE BAILEYSVILLE, WV

SURFACE OWNER POCAHONTAS LAND CORPORATION ACREAGE 5,522.72  
CBM ROYALTY OWNER PENN VIRGINIA OIL AND GAS CORPORATION LEASE ACREAGE 5,522.72  
LEASE No. \_\_\_\_\_

PROPOSED WORK: DRILL X CONVERT DRILL DEEPER REDRILL FRACTURE OR STIMULATE PLUG OFF OLD FORMATION PERFORATE NEW FORMATION OTHER PHYSICAL CHANGE IN WELL (SPECIFY) OCT 5 2001

PLUG AND ABANDON CLEAN OUT AND REPLUG  
TARGET FORMATION POCA NO. 3 AND POCA NO. 4 ESTIMATED DEPTH 1121'  
WELL OPERATOR CDX GAS, LLC DESIGNATED AGENT JOSEPH ZUPANICK  
ADDRESS P.O. BOX 609 ADDRESS PINEVILLE, WV 24874

6-6 272

WYO 2100 C

State of West Virginia  
Division of Environmental Protection  
Section of Oil & Gas

Well Operator's Report of Well Work

Farm name: Penn Virginia Oil and Gas Corporation

Operator Well No: Penn-4D

Location: Elevation: 1841.17

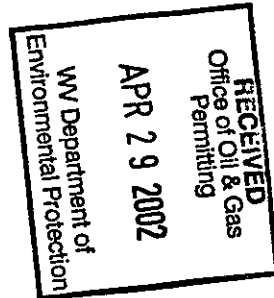
Quadrangle: BAILEYSVILLE

District: BAILEYSVILLE

County: WYOMING

Latitude: 5330 Feet South of 37 Deg. 32 Min. 30 Sec.  
Longitude: 2075 Feet West of 81 Deg. 37 Min. 30 Sec.

Company: CDX Gas, LLC  
P.O. Box 609  
Pineville, WV 24874



Agent: JOSEPH A. ZUPANICK

Inspector: OFIE HELMICK  
Permit Issued: 10/04/01  
Well Work commenced: 11/06/01  
Well Work completed: 12/02/01  
Verbal plugging  
Permission granted on:  
Rotary x Cable \_\_\_\_\_ Rig  
Total depth (ft) 1132'  
Fresh water depths (ft) N/A  
Salt water depths (ft) N/A  
Is coal being mined in the area (Y/N)? N  
Coal depths (ft): 363', 740', 1074'

Casing & Tubing Size	Used in Drilling	Left in Well	Cement Fill up
13 3/8"	15'	15'	Surface
9 5/8"	406'	406'	Surface
7"	997'	997'	Surface
2 7/8"		1076'	Hanging

OPEN FLOW DATA

Producing formation Pocahontas No. 3 Seam Pay zone depth (ft) 1074  
Gas: Initial open flow N/A Mcf/d Oil: Initial open flow \_\_\_\_\_ Bbl/d  
Final open flow N/A Mcf/d Final open flow \_\_\_\_\_ Bbl/d  
Time of open flow between initial and final tests: \_\_\_\_\_ hours  
Static rock pressure \_\_\_\_\_ psig (surface pressure) after \_\_\_\_\_ hours

Second Producing formation \_\_\_\_\_ Pay zone depth (ft) \_\_\_\_\_  
Gas: Initial open flow \_\_\_\_\_ Mcf/d Oil: Initial open flow \_\_\_\_\_ Bbl/d  
Final open flow \_\_\_\_\_ Mcf/d Final open flow \_\_\_\_\_ Bbl/d  
Time of open flow between initial and final tests: \_\_\_\_\_ hours  
Static rock pressure \_\_\_\_\_ psig (surface pressure) after \_\_\_\_\_ hours

Note: ON BACK OF THIS FORM, PUT THE FOLLOWING: 1) DETAILS OF PERFORATED INTERVALS, FRACTURING OR STIMULATING, PHYSICAL CHANGE, ETC. 2) THE WELL LOG WHICH IS A SYSTEMATICK DETAILED GEOLOGICAL RECORD OF ALL FORMATIONS, INCLUDING COAL ENCOUNTERED BY THE WELLBORE.

Joseph Zupanick  
or: CDX Gas, LLC  
By: [Signature]  
Date: 4-17-02

MAY 3 - 2002

WYO 2100 C

Operator: Penn-4D  
API No. 47- 109-02100 C  
Location: Wyoming County

Details of Perforated Intervals, Fracturing or Stimulation, Physical Change, Etc.

N/A

Well Log & Geologic Record - Depths from G.L.

Formation	Top	Bottom
Overburden	0	5
Sandy shale	5	35
Shale	35	75
Sandy shale	75	82
Shale	82	141
Sandy shale	141	171
Shale	171	245
Sandy shale	245	329
Shale	329	363
Coal	363	367
Sandy shale	367	400
Sandstone	400	447
Sandy shale	447	590
Shale	590	610
Sandy shale	610	675
Shale	675	740
Coal	740	744
Sandy shale	744	758
Shale	758	826
Sandy shale	826	850
Sandstone	850	973
Sandy shale	973	1074
Coal	1074	1079
Sandy Shale	1079	1132