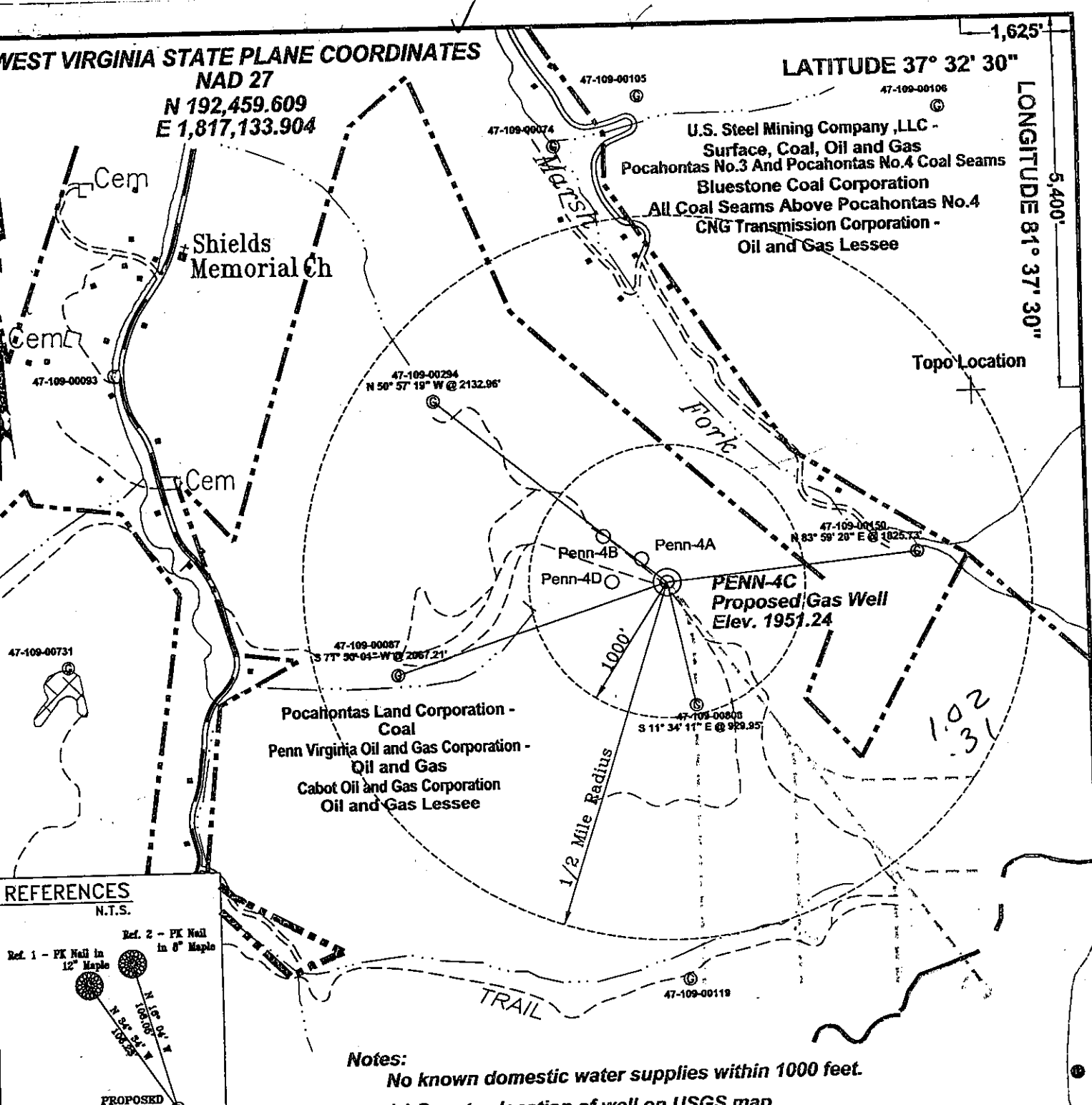


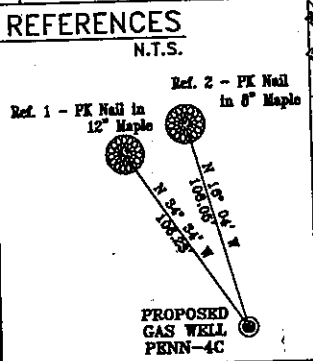
WEST VIRGINIA STATE PLANE COORDINATES
NAD 27
N 192,459.609
E 1,817,133.904

LATITUDE 37° 32' 30"
LONGITUDE 81° 37' 30"
1,625'
5,400'



U.S. Steel Mining Company, LLC -
Surface, Coal, Oil and Gas
Pocahontas No.3 And Pocahontas No.4 Coal Seams
Bluestone Coal Corporation
All Coal Seams Above Pocahontas No.4
CNG Transmission Corporation -
Oil and Gas Lessee

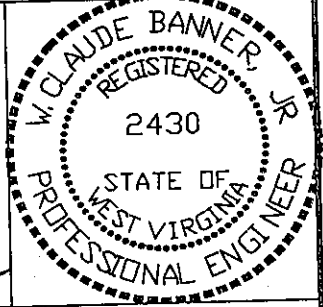
Pocahontas Land Corporation -
Coal
Penn Virginia Oil and Gas Corporation -
Oil and Gas
Cabot Oil and Gas Corporation
Oil and Gas Lessee



Notes:
No known domestic water supplies within 1000 feet.
(+) Denotes location of well on USGS map.

FILE No. CDXGAS
DRAWING NAME \CDXGAS\PLAT
DRAWING NAME PENN-4C
SCALE 1" = 1000'
MINIMUM DEGREE OF
ACCURACY 1 : 2500
PROVEN SOURCE OF
ELEVATION GPS - GLOBAL
POSITIONING SYSTEM

I THE UNDERSIGNED, HEREBY CERTIFY THAT
THIS PLAT IS CORRECT TO THE BEST OF MY
KNOWLEDGE AND BELIEF AND SHOWS ALL THE
INFORMATION REQUIRED BY LAW AND THE REGU-
LATIONS ISSUED AND PRESCRIBED BY THE
DEPARTMENT OF MINES.
(SIGNED) *W. Claude Banner Jr*
R.P.E. 2430 R.P.S.



**STATE OF WEST VIRGINIA
DIVISION OF ENVIRONMENTAL PROTECTION
OFFICE OF OIL AND GAS
NITRO, WV**

DATE September 4, 2001
OPERATOR'S WELL No. PENN-4C
API WELL No.
47 - 109 - 02099C
STATE COUNTY PERMIT

WELL TYPE: OIL GAS CBM LIQUID INJECTION WASTE DISPOSAL
(IF "GAS") PRODUCTION X STORAGE DEEP SHALLOW
LOCATION: ELEVATION 1951.24 WATER SHED TRIBUTARY OF BRIER CREEK
DISTRICT BAILEYSVILLE COUNTY WYOMING
QUADRANGLE BAILEYSVILLE, WV

SURFACE OWNER POCAHONTAS LAND CORPORATION ACREAGE 5,522.72
CBM ROYALTY OWNER PENN VIRGINIA OIL AND GAS CORPORATION LEASE ACREAGE 5,522.72
LEASE No. _____

PROPOSED WORK: DRILL X CONVERT DRILL DEEPER REDRILL FRACTURE OCT 5 2001
STIMULATE PLUG OFF OLD FORMATION PERFORATE NEW
FORMATION OTHER PHYSICAL CHANGE IN WELL (SPECIFY)

PLUG AND ABANDON CLEAN OUT AND REPLUG
TARGET FORMATION POCA NO. 3 AND POCA NO. 4 ESTIMATED DEPTH 1229'
WELL OPERATOR CDX GAS, LLC DESIGNATED AGENT JOSEPH ZUPANICK
ADDRESS P.O. BOX 609 ADDRESS PINEVILLE, WV 24874
PINEVILLE, WV 24874

6-6 272

WYO 2099C

State of West Virginia
 Division of Environmental Protection
 Section of Oil & Gas

Well Operator's Report of Well Work

Farm name: Penn Virginia Oil and Gas Corporation

Operator Well No: Penn-4C

Location: Elevation: 1955.92

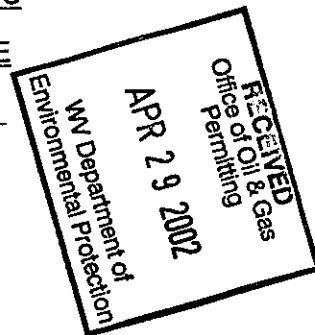
Quadrangle: BAILEYSVILLE

District: BAILEYSVILLE

County: WYOMING

Latitude: 5400 Feet South of 37 Deg. 32 Min. 30 Sec.
 Longitude: 1626 Feet West of 81 Deg. 37 Min. 30 Sec.

Company: CDX Gas, LLC
 P.O. Box 609
 Pineville, WV 24874



Agent: JOSEPH A. ZUPANICK

Inspector: OFIE HELMICK
 Permit Issued: 10/04/01
 Well Work commenced: 11/12/01
 Well Work completed: 12/17/01
 Verbal plugging
 Permission granted on:
 Rotary x Cable _____ Rig
 Total depth (ft) 1101'
 Fresh water depths (ft) N/A
 Salt water depths (ft) N/A
 Is coal being mined in the area (Y/N)? N
 Coal depths (ft): 474', 852', 1072'

Casing & Tubing Size	Used in Drilling	Left in Well	Cement Fill up
13 3/8"	25'	25'	Surface
9 5/8"	529'	529'	Surface
7"	1091'	1091'	Surface
2 7/8"		1181'	Hanging

OPEN FLOW DATA

Producing formation Pocahontas No. 3 Seam

Pay zone depth (ft) 1072'

Gas: Initial open flow N/A Mcf/d

Oil: Initial open flow _____ Bbl/d

Final open flow N/A Mcf/d

Final open flow _____ Bbl/d

Time of open flow between initial and final tests: _____ hours

Static rock pressure _____ psig (surface pressure) after _____ hours

Second Producing formation _____

Pay zone depth (ft) _____

Gas: Initial open flow _____ Mcf/d

Oil: Initial open flow _____ Bbl/d

Final open flow _____ Mcf/d

Final open flow _____ Bbl/d

Time of open flow between initial and final tests: _____ hours

Static rock pressure _____ psig (surface pressure) after _____ hours

Note: ON BACK OF THIS FORM, PUT THE FOLLOWING: 1) DETAILS OF PERFORATED INTERVALS, FRACTURING OR STIMULATING, PHYSICAL CHANGE, ETC. 2) THE WELL LOG WHICH IS A SYSTEMATICK DETAILED GEOLOGICAL RECORD OF ALL FORMATIONS, INCLUDING COAL ENCOUNTERED BY THE WELLBORE.

For: Joseph Zupanick
CDX Gas LLC
 By: Steven Pauly
 Date: 4-8-02

MAY 8 - 2002

WYO 2099 C

Operator: Penn-4C
 API No. 47- 109-02099 C
 Location: Wyoming County

Details of Perforated Intervals, Fracturing or Stimulation, Physical Change, Etc.

N/A

Well Log & Geologic Record - Depths from G.L.

Formation	Top	Bottom
Overburden	0	5
Sandy shale	5	30
Shale	30	45
Sandy shale	45	60
Shale	60	115
Sandy shale	115	150
Shale	150	242
Sandy shale	242	281
Shale	281	360
Sandy shale	360	440
Shale	440	474
Coal	474	477
Sandy shale	477	611
Shale	611	618
Sandstone	618	675
Shale	675	720
Sandy shale	720	785
Shale	785	852
Coal	852	856
Shale	856	900
Sandy shale	900	970
Sandstone	970	1052
Sandy shale	1052	1072
Coal	1072	1075
Sandy Shale	1075	1101

Pocahontas #3 →