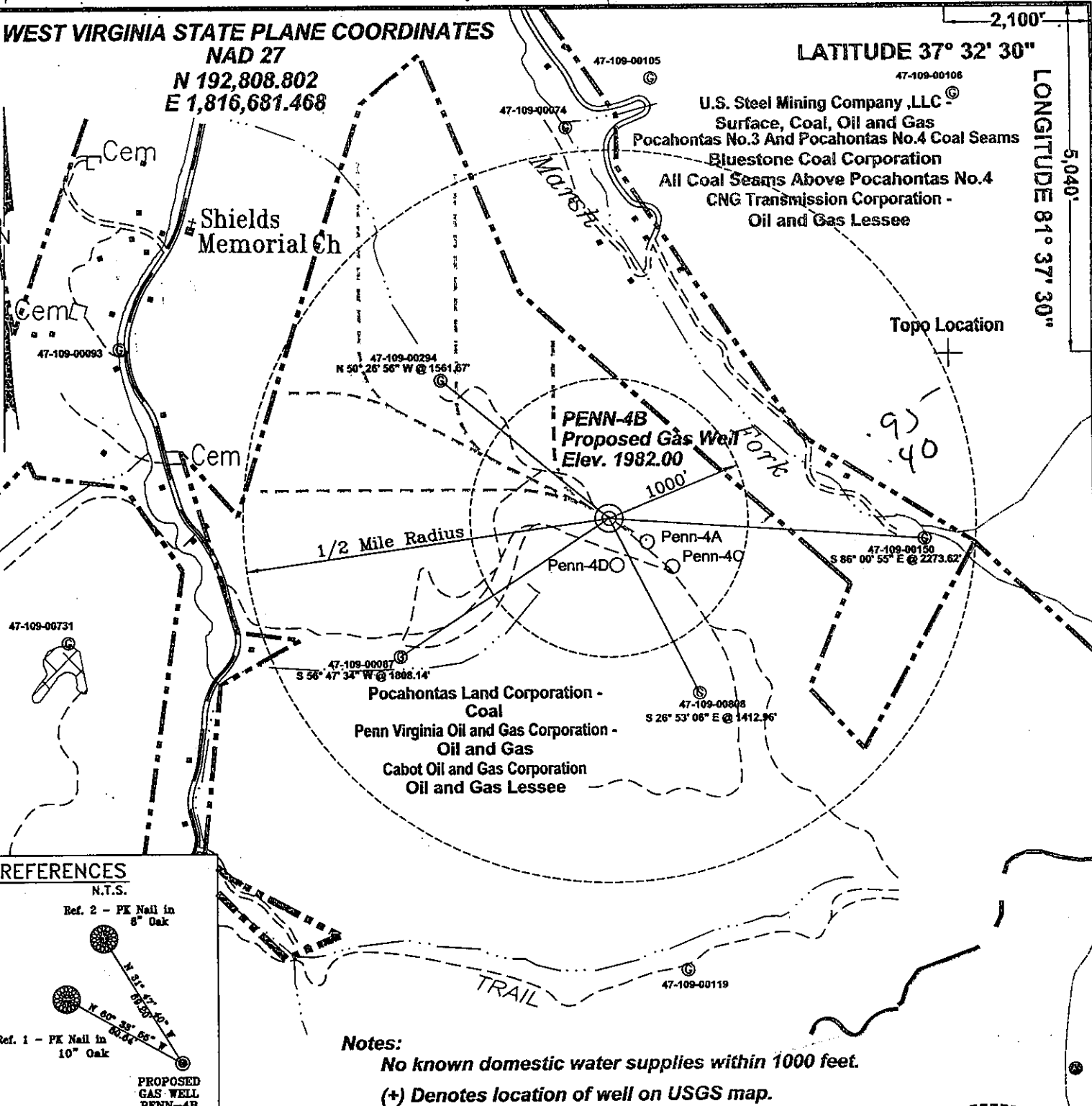


WEST VIRGINIA STATE PLANE COORDINATES

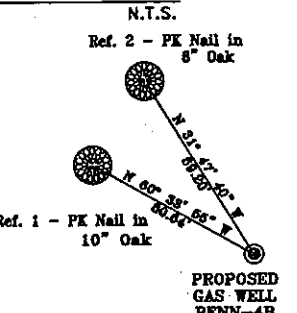
NAD 27
N 192,808.802
E 1,816,681.468

LATITUDE 37° 32' 30"

LONGITUDE 81° 37' 30"



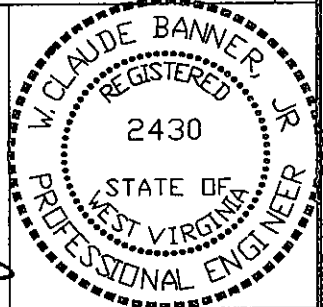
REFERENCES



Notes:
No known domestic water supplies within 1000 feet.
(+) Denotes location of well on USGS map.

FILE No. CDXGAS
DRAWING NAME \CDXGAS\PLAT
DRAWING NAME PENN-4B
SCALE 1" = 1000'
MINIMUM DEGREE OF ACCURACY 1 : 2500
PROVEN SOURCE OF ELEVATION GPS - GLOBAL POSITIONING SYSTEM

I THE UNDERSIGNED, HEREBY CERTIFY THAT THIS PLAT IS CORRECT TO THE BEST OF MY KNOWLEDGE AND BELIEF AND SHOWS ALL THE INFORMATION REQUIRED BY LAW AND THE REGULATIONS ISSUED AND PRESCRIBED BY THE DEPARTMENT OF MINES.
(SIGNED) W. Claude Banner, Jr.
R.P.E. 2430 R.P.S. _____



**STATE OF WEST VIRGINIA
DIVISION OF ENVIRONMENTAL PROTECTION
OFFICE OF OIL AND GAS
NITRO, WV**

DATE September 4, 2001
OPERATOR'S WELL No. PENN-4B
API WELL No. 47 - 109 - 02098C
STATE COUNTY PERMIT

WELL TYPE: OIL GAS CBM LIQUID INJECTION WASTE DISPOSAL
(IF "GAS") PRODUCTION X STORAGE DEEP SHALLOW
LOCATION: ELEVATION 1982.00 WATER SHED TRIBUTARY OF BRIER CREEK
DISTRICT BAILEYSVILLE COUNTY WYOMING
QUADRANGLE BAILEYSVILLE, WV

SURFACE OWNER POCAHONTAS LAND CORPORATION ACREAGE 5,522.72
CBM ROYALTY OWNER PENN VIRGINIA OIL AND GAS CORPORATION LEASE ACREAGE 5,522.72

LEASE No. _____

PROPOSED WORK: DRILL X CONVERT DRILL DEEPER REDRILL FRACTURE OR STIMULATE PLUG OFF OLD FORMATION PERFORATE NEW FORMATION OTHER PHYSICAL CHANGE IN WELL (SPECIFY)

PLUG AND ABANDON CLEAN OUT AND REPLUG
TARGET FORMATION POCA NO. 3 AND POCA NO. 4
WELL OPERATOR CDX GAS, LLC
ADDRESS P.O. BOX 609 PINEVILLE, WV 24874

ESTIMATED DEPTH 1252'
DESIGNATED AGENT JOSEPH ZUPANICK
ADDRESS P.O. BOX 609 PINEVILLE, WV 24874

OCT 5 2001

6-6 272

WYO 2098 C

State of West Virginia
Division of Environmental Protection
Section of Oil & Gas

Well Operator's Report of Well Work

Farm name: Penn Virginia Oil and Gas Corporation

Operator Well No: Penn-4B

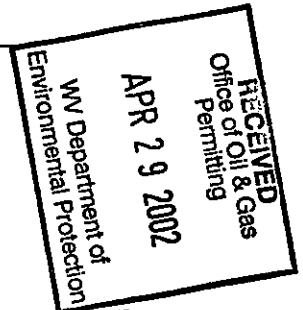
Location: Elevation: 1971.04

Quadrangle: BAILEYSVILLE

District: BAILEYSVILLE

County: WYOMING

Latitude: 5040 Feet South of 37 Deg. 32 Min. 30 Sec.
Longitude: 2100 Feet West of 81 Deg. 37 Min. 30 Sec.



Company: CDX Gas, LLC
P.O. Box 609
Pineville, WV 24874

Agent: JOSEPH A. ZUPANICK

Inspector: OFIE HELMICK
Permit Issued: 10/04/01
Well Work commenced: 11/01/01
Well Work completed: 11/17/01
Verbal plugging
Permission granted on:
Rotary x Cable _____ Rig
Total depth (ft) 1252'
Fresh water depths (ft) N/A
Salt water depths (ft) N/A
Is coal being mined in the area (Y/N)? N
Coal depths (ft): 492', 866', 1195'

Casing & Tubing Size	Used in Drilling	Left in Well	Cement Fill up
13 3/8"	30'	30'	Surface
9 5/8"	525'	525'	Surface
7"	1097'	1097'	Surface
2 7/8"		1146'	Hanging

OPEN FLOW DATA

Producing formation Pocahontas No. 3 Seam
Gas: Initial open flow N/A Mcf/d
Final open flow N/A Mcf/d
Time of open flow between initial and final tests: _____ hours
Static rock pressure _____ psig (surface pressure) after _____ hours
Pay zone depth (ft) 1195'
Oil: Initial open flow _____ Bbl/d
Final open flow _____ Bbl/d

Second Producing formation _____
Gas: Initial open flow _____ Mcf/d
Final open flow _____ Mcf/d
Time of open flow between initial and final tests: _____ hours
Static rock pressure _____ psig (surface pressure) after _____ hours
Pay zone depth (ft) _____
Oil: Initial open flow _____ Bbl/d
Final open flow _____ Bbl/d

Note: ON BACK OF THIS FORM, PUT THE FOLLOWING: 1) DETAILS OF PERFORATED INTERVALS, FRACTURING OR STIMULATING, PHYSICAL CHANGE, ETC. 2) THE WELL LOG WHICH IS A SYSTEMATICK DETAILED GEOLOGICAL RECORD OF ALL FORMATIONS, INCLUDING COAL ENCOUNTERED BY THE WELLBORE.

For: Joseph Zupanick
CDX Gas, LLC
By: Steven Pauly
Date: 4-8-02

Operator: Penn-4B
API No. 47- 109-02098 C
Location: Wyoming County

Details of Perforated Intervals, Fracturing or Stimulation, Physical Change, Etc.

N/A

Well Log & Geologic Record - Depths from G.L.

Formation	Top	Bottom
Overburden	0	5
Shale	5	68
Sandy shale	68	78
Shale	78	126
Sandy shale	126	175
Shale	175	273
Sandy shale	273	296
Shale	296	375
Sandy shale	375	460
Shale	460	494
Coal	492	496
Sandy shale	496	562
Shale	562	572
Sandy shale	572	630
Shale	630	636
Sandy shale	636	800
Shale	800	866
Coal	866	869
Shale	869	942
Sandy shale	942	958
Sandstone	958	1078
Sandstone	1078	1088
Sandy shale	1088	1125
Sandstone	1125	1185
Shale	1185	1195
Coal	1195	1200
Sandy shale	1200	1252

Pocahontas #3 →