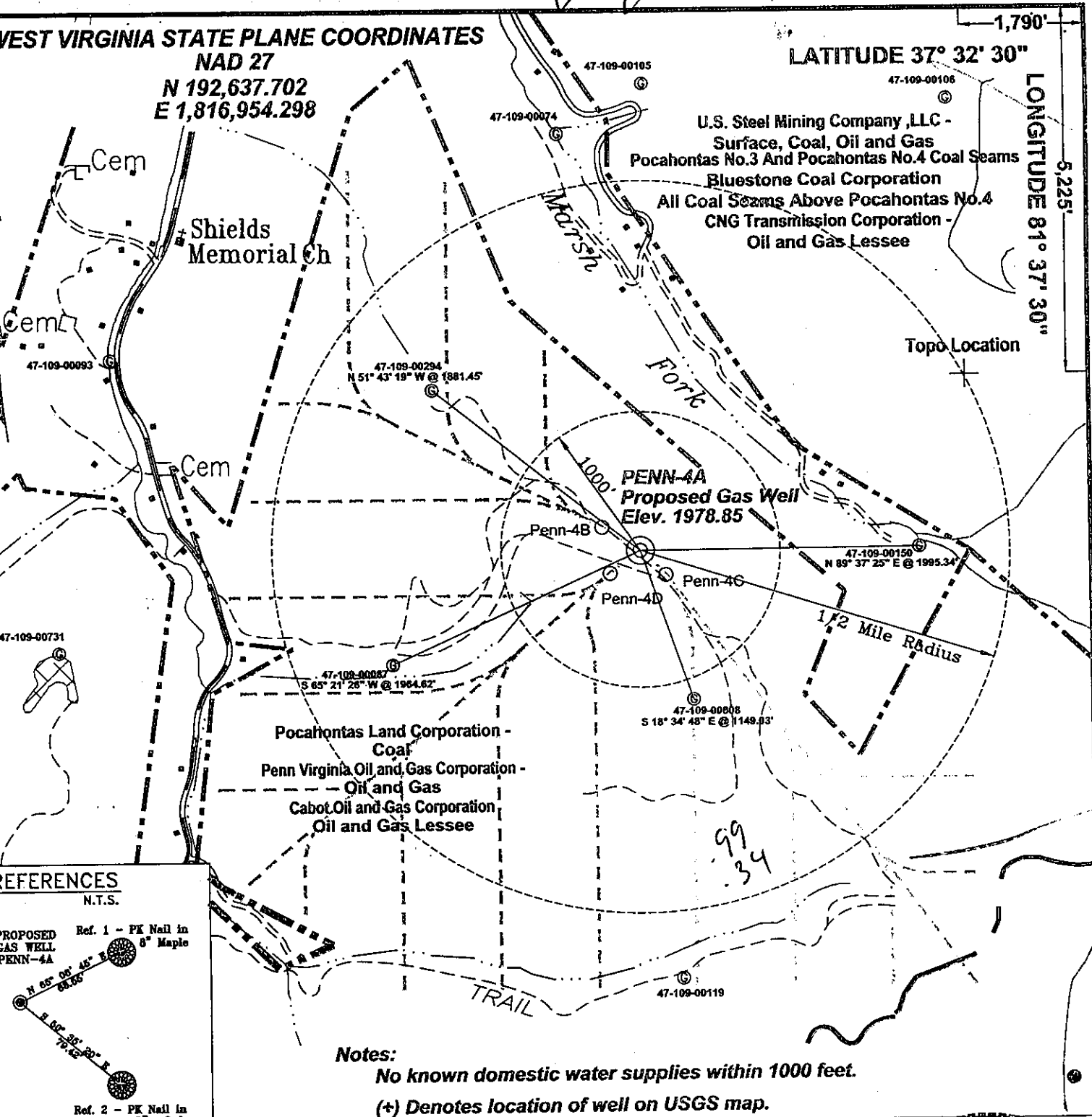


WEST VIRGINIA STATE PLANE COORDINATES

NAD 27
N 192,637.702
E 1,816,954.298

LATITUDE 37° 32' 30"

LONGITUDE 81° 37' 30"



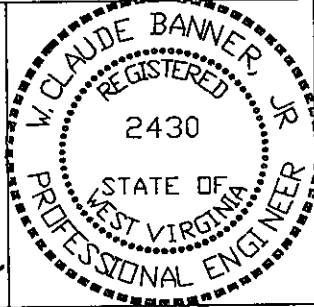
REFERENCES

N.T.S.
 Ref. 1 - PK Nail in 8" Maple
 Ref. 2 - PK Nail in 8" Oak

Notes:
 No known domestic water supplies within 1000 feet.
 (+) Denotes location of well on USGS map.

File No. CDXGAS
 DRAWING NAME \CDXGAS\PLAT
 DRAWING NAME PENN-4A
 SCALE 1" = 1000'
 MINIMUM DEGREE OF ACCURACY 1 : 2500
 PROVEN SOURCE OF ELEVATION GPS - GLOBAL POSITIONING SYSTEM

I THE UNDERSIGNED, HEREBY CERTIFY THAT THIS PLAT IS CORRECT TO THE BEST OF MY KNOWLEDGE AND BELIEF AND SHOWS ALL THE INFORMATION REQUIRED BY LAW AND THE REGULATIONS ISSUED AND PRESCRIBED BY THE DEPARTMENT OF MINES.
 (SIGNED) W. Claude Banner Jr.
 R.P.E. 2430 R.P.S.



STATE OF WEST VIRGINIA
DIVISION OF ENVIRONMENTAL PROTECTION
OFFICE OF OIL AND GAS
NITRO, WV

DATE September 4, 2001
 OPERATOR'S WELL No. PENN-4A
 API WELL No. 47 - 109 - 02097C
 STATE COUNTY PERMIT

WELL TYPE: OIL GAS CBM LIQUID INJECTION WASTE DISPOSAL
 (IF "GAS") PRODUCTION X STORAGE DEEP SHALLOW
 LOCATION: ELEVATION 1978.85 WATER SHED TRIBUTARY OF BRIER CREEK
 DISTRICT BAILEYSVILLE COUNTY WYOMING
 QUADRANGLE BAILEYSVILLE, WV

SURFACE OWNER POCAHONTAS LAND CORPORATION ACREAGE 5,522.72
 CBM ROYALTY OWNER PENN VIRGINIA OIL AND GAS CORPORATION LEASE ACREAGE 5,522.72

LEASE No. _____

PROPOSED WORK: DRILL X CONVERT DRILL DEEPER REDRILL FRACTURE OR STIMULATE PLUG OFF OLD FORMATION PERFORATE NEW FORMATION OTHER PHYSICAL CHANGE IN WELL (SPECIFY) OCT 5 2001

PLUG AND ABANDON CLEAN OUT AND REPLUG
 TARGET FORMATION POCA NO. 3 AND POCA NO. 4
 WELL OPERATOR CDX GAS, LLC
 ADDRESS P.O. BOX 609 PINEVILLE, WV 24874

ESTIMATED DEPTH 1255'
 DESIGNATED AGENT JOSEPH ZUPANICK
 ADDRESS P.O. BOX 609 PINEVILLE WV 24874

6-6 272

WYO 2097C

State of West Virginia
Division of Environmental Protection
Section of Oil & Gas

Well Operator's Report of Well Work

Farm name: Penn Virginia Oil and Gas Corporation

Operator Well No: Penn-4A

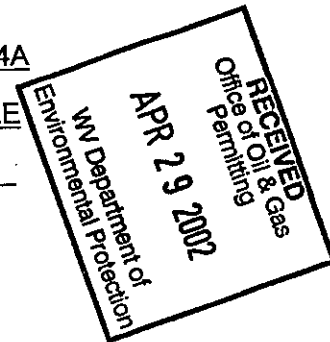
Location: Elevation: 1967.88

Quadrangle: BAILEYSVILLE

District: BAILEYSVILLE

County: WYOMING

Latitude: 5225 Feet South of 37 Deg. 32 Min. 30 Sec.
Longitude: 1790 Feet West of 81 Deg. 37 Min. 30 Sec.



Company: CDX Gas, LLC
P.O. Box 609
Pineville, WV 24874

Agent: JOSEPH A. ZUPANICK

Inspector: OFIE HELMICK
Permit Issued: 10/04/01
Well Work commenced: 10/29/01
Well Work completed: 12/17/01
Verbal plugging
Permission granted on:
Rotary x Cable _____ Rig
Total depth (ft) 1043'
Fresh water depths (ft) N/A
Salt water depths (ft) N/A
Is coal being mined in the area (Y/N)? N
Coal depths (ft): 489', 870'

Casing & Tubing Size	Used in Drilling	Left in Well	Cement Fill up
13 3/8"	30'	30'	Surface
9 5/8"	532'	532'	Surface
7"	947'	947'	Surface

OPEN FLOW DATA

Producing formation Non Producer Pay zone depth (ft)
Gas: Initial open flow N/A Mcf/d Oil: Initial open flow _____ Bbl/d
Final open flow N/A Mcf/d Final open flow _____ Bbl/d
Time of open flow between initial and final tests: _____ hours
Static rock pressure _____ psig (surface pressure) after _____ hours

Second Producing formation _____ Pay zone depth (ft)
Gas: Initial open flow _____ Mcf/d Oil: Initial open flow _____ Bbl/d
Final open flow _____ Mcf/d Final open flow _____ Bbl/d
Time of open flow between initial and final tests: _____ hours
Static rock pressure _____ psig (surface pressure) after _____ hours

Note: ON BACK OF THIS FORM, PUT THE FOLLOWING: 1) DETAILS OF PERFORATED INTERVALS, FRACTURING OR STIMULATING, PHYSICAL CHANGE, ETC. 2) THE WELL LOG WHICH IS A SYSTEMATICK DETAILED GEOLOGICAL RECORD OF ALL FORMATIONS, INCLUDING COAL ENCOUNTERED BY THE WELLBORE.

For: Joseph Zupanick
CDX Gas, LLC
By: Steve Pauley
Date: 4-8-02

MAY 3 - 2002

WYO 2097 C

Operator: Penn-4
API No. 47- 109-02097 C
Location: Wyoming County

Details of Perforated Intervals, Fracturing or Stimulation, Physical Change, Etc.

N/A

Well Log & Geologic Record - Depths from G.L.

Formation	Top	Bottom
Overburden	0	5
Shale	5	65
Sandy shale	65	75
Shale	75	130
Sandy shale	130	166
Shale	166	267
Sandy shale	267	293
Shale	293	374
Sandy shale	374	411
Shale	411	427
Sandy shale	427	464
Shale	464	489
Coal	489	493
Sandy shale	493	562
Shale	562	572
Sandy shale	572	626
Shale	626	633
Sandy shale	633	701
Shale	701	735
Sandy shale	735	800
Shale	800	870
Coal	870	873
Shale	873	925
Sandy shale	925	975
Sandstone	975	1043

