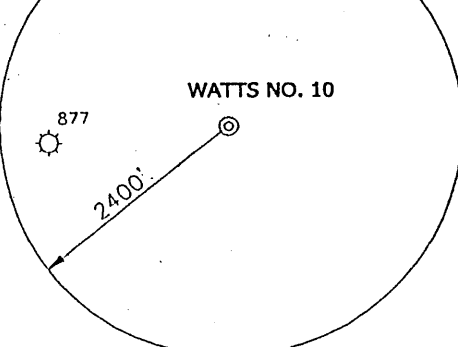
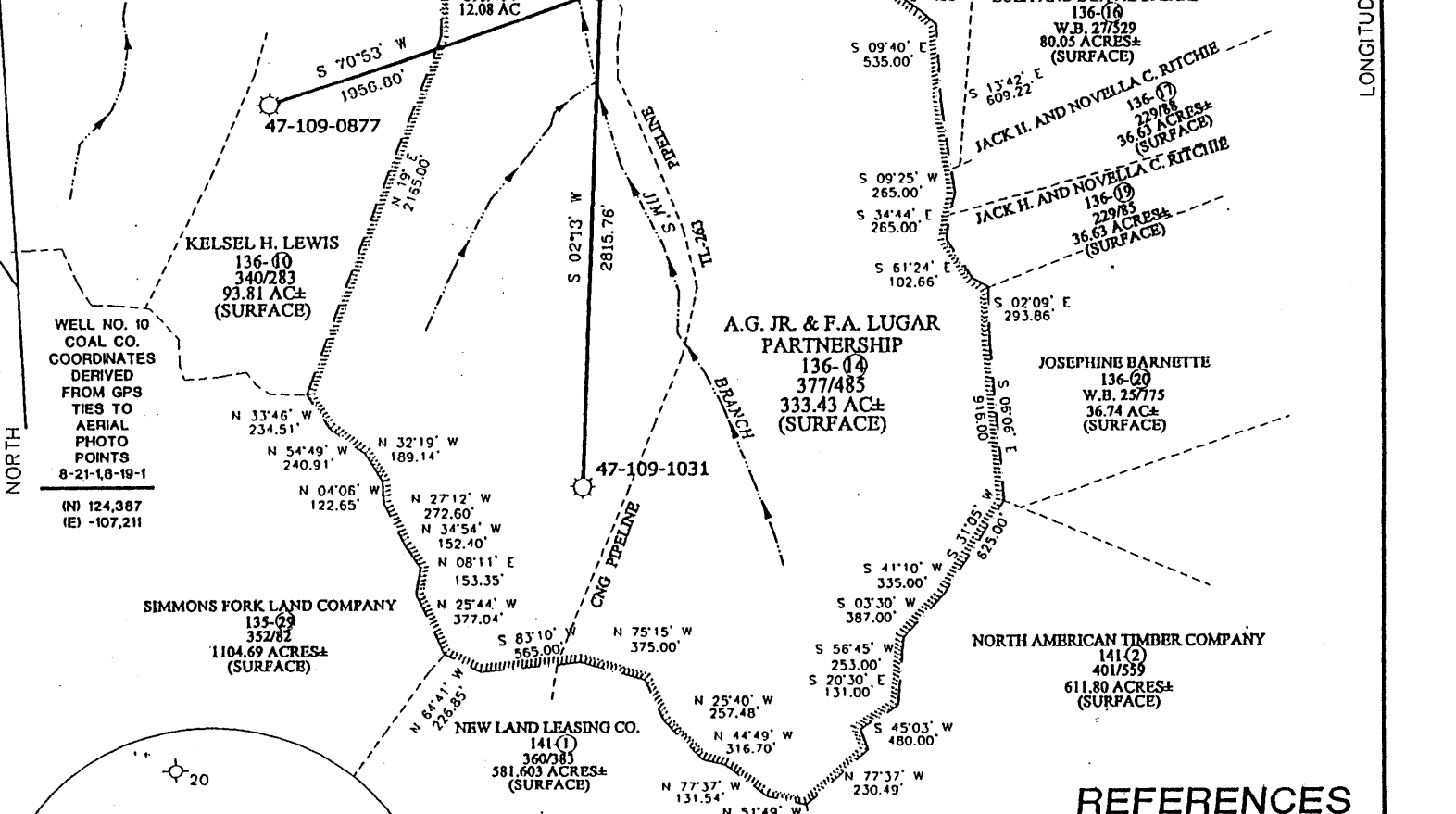
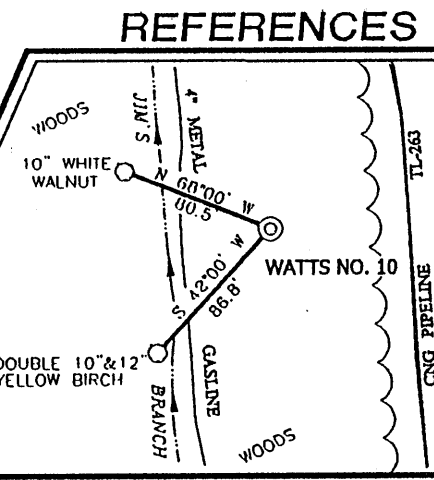


WATTS LEASE 333.43 ACRES ± WATTS NO. 10



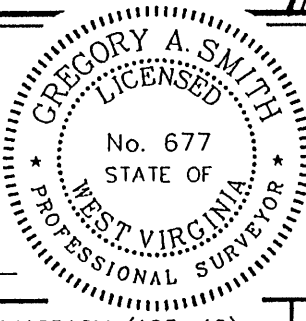
NOTES ON SURVEY

1. TIES TO WELLS ARE BASED ON STATE PLANE GRID NORTH WV SOUTH ZONE NAD '27.
2. TIES TO REFERENCES ARE BASED ON MAGNETIC NORTH 5-25-01.
3. LEASE BOUNDARY SHOWN HEREON TAKEN FROM D.B. 166 PG. 383 WITH ADDITIONAL INFORMATION TAKEN FROM A PLAT DATED 01-21-85 AS PREPARED FOR WELL A.P.I. NO. 47-109-1032.
4. SURFACE OWNER AND ADJOINER INFORMATION TAKEN FROM THE ASSESSOR AND COUNTY CLERK RECORDS OF WYOMING COUNTY IN APRIL, 2001.
5. WELL LAT./LONG. ESTABLISHED BY DGPS(SUBMETER MAPPING GRADE).



I THE UNDERSIGNED, HEREBY CERTIFY THAT THIS PLAT IS CORRECT TO THE BEST OF MY KNOWLEDGE AND BELIEF AND SHOWS ALL THE INFORMATION REQUIRED BY LAW AND THE REGULATIONS ISSUED AND PRESCRIBED BY THE DEPARTMENT OF ENERGY

P.S. *Gregory A. Smith*
677



(+) DENOTES LOCATION OF WELL ON UNITED STATES TOPOGRAPHIC MAPS.
DATE MAY 30, 2001
OPERATORS WELL NO. WATTS NO. 10
API WELL NO. 47 - 109 - 02092
STATE COUNTY PERMIT

MINIMUM DEGREE OF ACCURACY 1 / 2500 FILE NO. 4418P10M (105-42)
PROVEN SOURCE OF ELEVATION JUNCTION OF ROADS ELEVATION 1391' SCALE 1" = 1000'

STATE OF WEST VIRGINIA
DIVISION OF ENVIRONMENTAL PROTECTION
OFFICE OF OIL AND GAS

WELL TYPE : OIL GAS LIQUID WASTE IF "GAS" PRODUCTION STORAGE DEEP SHALLOW

LOCATION : ELEVATION 1554' WATERSHED JIMS BRANCH OF CLEAR FORK
DISTRICT OCEANA COUNTY WYOMING QUADRANGLE MATHENY 7.5'

SURFACE OWNER A.G. JR. AND F.A. LUGAR PARTNERSHIP (LUGAR LUMBER COMPANY) ACREAGE 333.43
ROYALTY OWNER CABOT OIL AND GAS CORP. OF WV LEASE ACREAGE 333.43± OF 1225.28±

PROPOSED WORK : LEASE NO. 47-9137
DRILL CONVERT DRILL DEEPER REDRILL FRACTURE OR STIMULATE PLUG OFF OLD FORMATION PERFORATE NEW FORMATION PLUG AND ABANDON CLEAN OUT AND REPLUG OTHER

PHYSICAL CHANGE IN WELL (SPECIFY) _____ TARGET FORMATION WEIR
ESTIMATED DEPTH 3210'

WELL OPERATOR CABOT OIL AND GAS CORPORATION DESIGNATED AGENT JOHN ABSHIRE **AUG 24 2001**
ADDRESS 900 LEE ST. EAST-SUITE 1500, CHARLESTON, WV 25301 ADDRESS 900 LEE ST. EAST-SUITE 1500, CHARLESTON, WV 25301

COUNTY NAME WYO PERMIT 2092

State of West Virginia
 Division of Environmental Protection
 Section of Oil and Gas
 Well Operator's Report of Well Work

Feb 17

Farm name: AG & FA Lugar

Operator Well No.: Watts Land #10

LOCATION: Elevation: 1554' Quadrangle: Matheny
 District: Oceana County: Wyoming
 Latitude: 10 feet South of 37 DEG. 42 MIN. 30 SEC.
 Longitude: 9,780 feet West of 81 DEG. 32 MIN. 30 SEC.

Company: Cabot Oil & Gas Corporation
 900 Lee Street East, Suite 500
 Charleston, WV 25301

Agent: John Abshire
 Inspector: Ofie Helmick
 Permit Issued: 8/22/01
 Well Work Commenced: 10/15/01
 Well Work Completed: 1/22/02
 Verbal Plugging
 Permission granted on:
 Rotary X Cable _____
 Total Depth (feet) 3640'
 Fresh Water Depths (ft) 64', 100'
 Salt Water Depths (ft) _____
 Is coal being mined in area (Y / N)? Y
 Coal Depths (ft) 195'-196', 205'-206', 220'-222', 350'-352', 380'-382', 610'-611', 650'-651'

Casing & Tubing Size	Used in Drilling	Left in Well	Cement Fill up Cu. Ft.
16"	33'	33'	
7"	1110'	1110'	280 sks
4 1/2" 2 Stage Tool @ 1926'		3643'	95 sks 80 sks
1 1/2"		3098'	

OPEN FLOW DATA

Producing formation	WEIR	Pay zone depth (ft)	3105' - 3114'
Gas: Initial open flow	26 MCF/d	Oil: Initial open flow	0 Bbl/d
Final open flow	310 MCF/d	Final open flow	0 Bbl/d
	Commingled		
Time of open flow between initial and final tests			9 Hours
Static rock pressure	299 psig (surface pressure after		18 Hours
Second producing formation	BIG LIME RAVENCLIFF	Pay zone depth (ft)	2866' - 2870' 1677' - 1707'
Gas: Initial open flow	TRACE NO SHOW	Oil: Initial open flow	0 Bbl/d
Final open flow	310 MCF/d	Final open flow	0 Bbl/d
	Commingled		
Time of open flow between initial and final tests			9 Hours
Static rock pressure	299 psig (surface pressure after		18 Hours

NOTE: ON BACK OF THIS FORM PUT THE FOLLOWING: 1) DETAILS OF PERFORATED INTERVALS, FRACTURING OR STIMULATING, PHYSICAL CHANGE, ETC. 2) THE WELL LOG WHICH IS A SYSTEMATIC DETAILED GEOLOGICAL RECORD OF ALL FORMATIONS, INCLUDING COAL ENCOUNTERED BY THE WELLBORE.

For: CABOT OIL & GAS CORPORATION

MAR 03 2002

By: *Ray Prudnick* Operations Manager
 Date: 2/18/02

WV 2092

Perforated Weir formation using 3 1/8" HSC (13 gram, 0.33 entry) 4 SPF from 3105'KB to 3114'KB (40 total holes).
 Performed 75 Q FF frac as follows: Breakdown: 1460 psig, ISIP: 1225 psig, Avg Treating: 1222 psig, Max Treating: 1492 psig, Final ISIP: 1382 psig, 5-Min ISIP: 1323 psig, Avg N2 Rate: 8000 scfm, Total N2 Vol: 386,100 scf, Total Slurry Vol: 220 bbl, Total Fluid Vol: 180 bbl, Avg Inj Rate: 20 bpm, Max Inj Rate: 21 bpm, Max Prop Con: 13 ppg, Total Prop: 40,360# 20/40.

Perforated Big Lime from (2866 - 2870) 21 holes. Set SMFP @ 2890' KB. Performed 15% HCL - FE Gelled Acid frac as follows: Breakdown: 813 psig, ISIP: 211 psig, Avg Treating: 250 psig, Max Treating: 1275 psig, Final ISIP: 1231 psig, 5-Min ISIP: 1176 psig, 10-Min ISIP: 1149 psig, Total Fluid Vol: 148 bbl, Avg Inj Rate: 8 bpm, Max Inj Rate: 10 bpm, Dropped 18 perf balls during treatment, saw slight ball action.

Perforated Ravenscliff from (1677 - 1707) 62 holes. Set LMFP @ 1730' KB. Performed 75 Q FF frac as follows: Breakdown: 3644 psig, ISIP: 2504 psig, Avg Treating: 2925 psig, Max Treating: 3117 psig, Final ISIP: 2600 psig, 5-Min ISIP: 2490 psig, 10-Min ISIP: 2454 psig, Avg N2 Rate: 14,000 scfm, Total N2 Vol: 944,800 scf, Total Slurry Vol: 381 bbl, Total Fluid Vol: 320 bbl, Avg Inj Rate: 20 bpm, Max Inj Rate: 20 bpm, Max Prop Con: 17 ppg, Total Prop: 71,895# 20/40 sand.

FORMATION	TOP	BOTTOM	REMARKS
SILT/SHALE	0	272	
SANDSTONE	272	346	
SILT/SHALE	346	518	
SAND/SHALE	518	1125	
SHALE	1125	1220	
SANDSTONE	1220	1353	
SHALE	1353	1395	
SANDSTONE	1395	1505	
SHALE	1505	1558	
PRINCETON	1558	1596	
SILT/SHALE	1596	1667	
RAVENCLIFF	1667	1712	
AVIS LS	1712	1750	
SHALE	1750	1805	
MAXTON	1805	1854	
SHALE	1854	2236	
MAXTON	2236	2282	
SILT/SHALE	2282	2410	
LITTLE LIME	2410	2587	
BIG LIME	2587	2908	
POCONO	2908	3104	
WEIR	3104	3115	
SHALE	3115	3480	
BEREA	3480	3490	
SHALE	3490	3640' TD	

