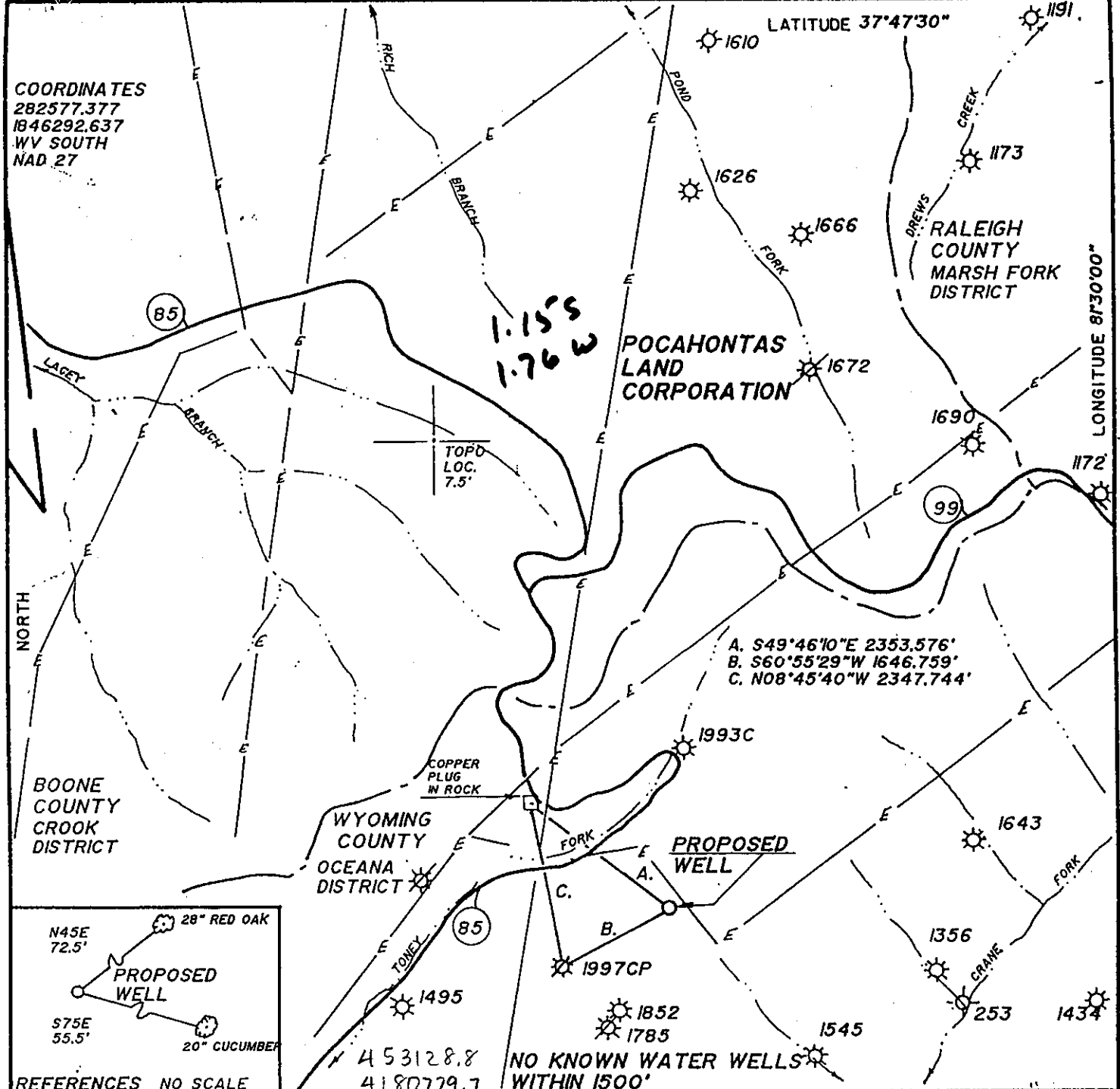


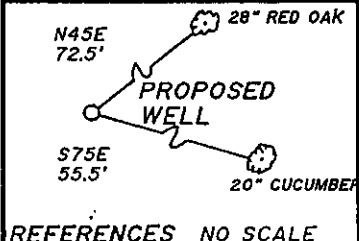
9300'

LATITUDE 37°47'30"

COORDINATES
282577.377
1846292.637
WV SOUTH
NAD 27



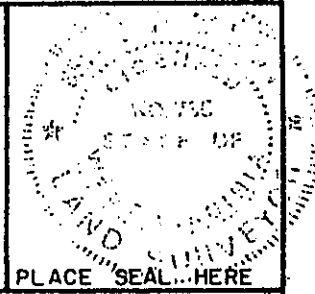
A. S49°46'10"E 2353.576'
 B. S60°55'29"W 1646.759'
 C. N08°45'40"W 2347.744'



NO KNOWN WATER WELLS
 WITHIN 1500'

FILE NO. _____
 DRAWING NO. _____
 SCALE 1"=2000'
 MINIMUM DEGREE OF ACCURACY 1:5000
 PROVEN SOURCE OF ELEVATION COPPER PLUG IN ROCK
 ELEVATION 2783.54

I THE UNDERSIGNED, HEREBY CERTIFY THAT THIS PLAT IS CORRECT TO THE BEST OF MY KNOWLEDGE AND BELIEF AND SHOWS ALL THE INFORMATION REQUIRED BY LAW AND THE REGULATIONS ISSUED AND PRESCRIBED BY THE DEPARTMENT OF MINES.
 (SIGNED) *Suzanne Courman*
 R.P.E. _____ L.L.S. 736



(+) DENOTES LOCATION OF WELL ON UNITED STATES TOPOGRAPHIC MAPS
 FORM IV-6
 (8-78)



DATE APRIL 29, 20 01
 OPERATOR'S WELL NO. LC-125
 API WELL NO. 47-109-2062C
 STATE COUNTY PERMIT

Division of Environmental Protection
 Office of Oil & Gas

WELL TYPE: OIL _____ GAS X LIQUID INJECTION _____ WASTE DISPOSAL _____
 (IF "GAS", PRODUCTION X STORAGE _____ DEEP _____ SHALLOW _____
 LOCATION: ELEVATION 3147 WATER SHED TONEY FORK
 DISTRICT OCEANA COUNTY WYOMING
 QUADRANGLE PILOT KNOB, WV 7.5'
 SURFACE OWNER POCAHONTAS LAND CORPORATION ACREAGE 29500±
 OIL & GAS ROYALTY OWNER PENN VIRGINIA OIL & GAS CORPORATION LEASE ACREAGE 29500±
 LEASE NO. _____
 PROPOSED WORK: DRILL X CONVERT _____ DRILL DEEPER _____ REDRILL _____ FRACTURE OR STIMULATE _____ PLUG OFF OLD FORMATION _____ PERFORATE NEW FORMATION _____ OTHER PHYSICAL CHANGE IN WELL (SPECIFY) _____
 PLUG AND ABANDON _____ CLEAN OUT AND REPLUG _____
 TARGET FORMATION Beckley Coal, Fair Creek Coal ESTIMATED DEPTH 3500
 WELL OPERATOR PENN VIRGINIA OIL & GAS CORP DESIGNATED AGENT MR. HARRY JEWEL JUL 13 2001
 ADDRESS PO BOX 387 DUFFIELD, VA 24244-0387 ADDRESS PO BOX 460 RAVENCLIFF, WV 25913

CHARLESTON, BLUEPRINT 092941

WYO 2062C

6-6 248

State of West Virginia
Division of Environmental Production
Section of Oil and Gas

Reviewed: AEF

Well Operator's Report of Well Work

Farm Name Pocahontas Land Corporation

Operator Well No.: LC-126

LOCATION Elevation: 3153

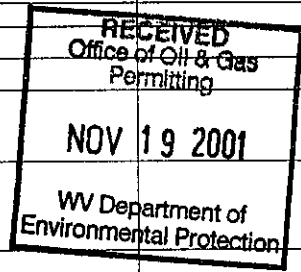
Quadrangle: Pilot Knob 7 1/2'

District: Oceana County: Wyoming
Latitude: 6120 Feet South of 37 Deg. 47 Min. 30 Sec.
Longitude: 9300 Feet West of 81 Deg. 30 Min. 00 Sec.

Company:

Penn Virginia Oil & Gas Corporation

	Casing and Tubing	Used in drilling	Left in well	Cement fill up Cu. Ft.
Address: P.O. Box 387	13 3/8"	33'	33'	0
Duffield, VA 24244	9 5/8"	1190'	1190'	405
Agent: Harry Jewell	7"	1934'	1934'	368
Inspector: Ofie Helmick	4 1/2"	3455'	3455'	351
Date Permit Issued: 07/10/2001				
Date Well Work Commenced: 08/27/2001				
Date Well Work Completed: 09/18/2001				
Verbal Plugging:				
Date Permission granted on:				
Rotary X Cable Rig				
Total Depth (feet): 3,500				
Fresh Water Depth (ft):				
Damp @ 100'				
Salt Water Depth (ft):				
Is coal being mined in area (N/Y)? N				
Coal Depths (ft): 349'-351', 850'-870' - Open Mine, 1090'-1098', 1335'-1338', 1503'-1505				



OPEN FLOW DATA

Producing formation Beckley Coal & Ravencriff Sand Pay zone depth (ft) _____
 Gas: Initial open flow _____ MCF/d Oil: Initial open flow _____ Bbl/d
 Final open flow Not Taken MCF/d Final open flow _____ Bbl/d
 Time of open flow between initial and final tests: _____ Hours
 Static rock pressure Not Taken psig (surface pressure) after _____ Hours

Second producing formation _____ Pay zone depth (ft) _____
 Gas: Initial open flow _____ MCF/d Oil: Initial open flow _____ Bbl/d
 Final open flow _____ MCF/d Final open flow _____ Bbl/d
 Time of open flow between initial and final tests: _____ Hours
 Static rock pressure _____ psig (surface pressure) after _____ Hours

NOTE: ON BACK OF THIS FORM PUT THE FOLLOWING: 1). DETAILS OF PERFORATED INTERVALS, FRACTURING OR STIMULATING, PHYSICAL CHANE, TEC. 2). THE WELL LOG WHICH IS A SYSTEMATIC DETAILED GEOLOGICAL RECORD OF ALL FORMATIONS, INCLUDING COAL ENCOUNTERED BY THE WELLBORE.

Signed:

By: William M. Dwyer
Date: 11/16/01

WYO 2062

NOV 30 2001

DETAILS OF PERFORATIONS, FRACTURING, OR PHYSICAL CHANGE, ETC.

PERFORATIONS AND FRACTURING

Stage 1- Ravenscliff- Perforated from 3246' to 3254' with 16 holes. Brokedown with 500 gallons 15% HCL acid and water. Treated with 174 bbls water, 40100 lbs 20/40 sand and 369000 SCF N2. ISIP: 3305 psi. ATP: 3012 psi. ATR: 20 BPM.

Stage 2- Beckley Coal - Perforated from 2671' to 2674' with 12 holes. Brokedown with water. Treated with 328 bbls water 9950 lbs 20/40 sand. ISIP: 764 psi. ATP: 2140 psi. ATR: 20 BPM.

<u>FORMATIONS</u>	<u>TOP</u>	<u>BOTTOM</u>	<u>REMARKS</u>
Sand, shale, & coal	0	1505	
Sand & shale	1505	2030	
Shale & coal	2030	2050	
Sand & shale	2050	2394	
Shale & coal	2394	2410	
Shale	2410	2457	
Sand	2457	2542	
Sand & shale	2542	2670	
Beckley coal	2670	2673	
Sand	2673	2705	
Coal	2705	2707	
Shale	2707	2760	
Sand	2760	3095	
Shale	3095	3175	
Sand & shale	3175	3232	
Ravenscliff sand	3232	3255	
Avis limestone	3255	3287	
Shale	3287	3332	
Shale	3332	3500	No shows reported