

WEST VIRGINIA STATE PLANE COORDINATES

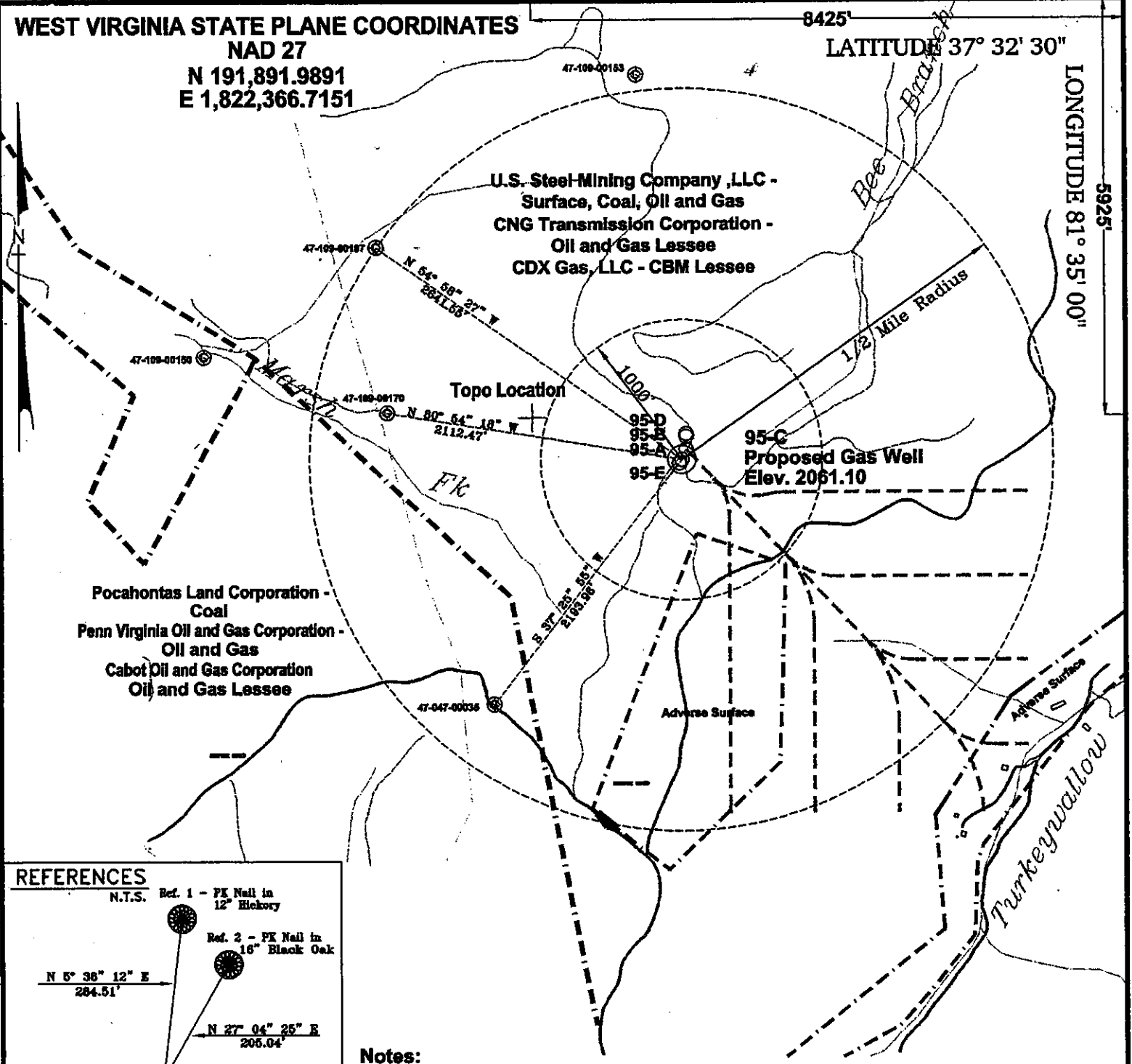
**NAD 27
N 191,891.9891
E 1,822,366.7151**

8425'

LATITUDE 37° 32' 30"

LONGITUDE 81° 35' 00"

5925'



**U.S. Steel Mining Company, LLC -
Surface, Coal, Oil and Gas
CNG Transmission Corporation -
Oil and Gas Lessee
CDX Gas, LLC - CBM Lessee**

**Pocahontas Land Corporation -
Coal
Penn Virginia Oil and Gas Corporation -
Oil and Gas
Cabot Oil and Gas Corporation
Oil and Gas Lessee**

REFERENCES

N.T.S.

Ref. 1 - PK Nail in
12" Hickory

Ref. 2 - PK Nail in
16" Black Oak

N 5° 36' 12" E
284.51'

N 27° 04' 25" E
206.04'

PROPOSED
GAS Well
95-C

Notes:

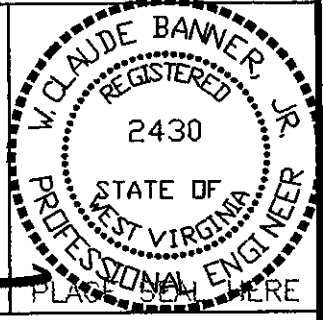
No known domestic water supplies within 1000 feet.

(+) Denotes location of well on USGS map.

FILE No. CDXGAS
DRAWING NAME \CDXGAS\PLAT
DRAWING NAME 95-C
SCALE 1" = 1000'
MINIMUM DEGREE OF
ACCURACY 1 : 2500
PROVEN SOURCE OF
ELEVATION GPS - GLOBAL
POSITIONING SYSTEM

I THE UNDERSIGNED, HEREBY CERTIFY THAT THIS PLAT IS CORRECT TO THE BEST OF MY KNOWLEDGE AND BELIEF AND SHOWS ALL THE INFORMATION REQUIRED BY LAW AND THE REGULATIONS ISSUED AND PRESCRIBED BY THE DEPARTMENT OF MINES.

(SIGNED) W. Claude Banner, Jr.
R.P.E. 2430 R.P.S. PLATE 064 HERE



**STATE OF WEST VIRGINIA
DIVISION OF ENVIRONMENTAL PROTECTION
OFFICE OF OIL AND GAS
NITRO, WV**

DATE March 30, 2001
OPERATOR'S WELL No. 95-C
API WELL No. 47 - 109 - 02039C
STATE COUNTY PERMIT

WELL TYPE: OIL GAS CBM LIQUID INJECTION WASTE DISPOSAL
(IF "GAS") PRODUCTION X STORAGE DEEP SHALLOW
LOCATION: ELEVATION 2061.10 WATER SHED BEE BRANCH OF INDIAN CREEK
DISTRICT CENTER COUNTY WYOMING
QUADRANGLE PINEVILLE, WV

CANCELLED

SURFACE OWNER U.S. STEEL MINING COMPANY, LLC ACREAGE 37977.66
CBM ROYALTY OWNER U.S. STEEL MINING COMPANY, LLC LEASE ACREAGE

LEASE No.
PROPOSED WORK: DRILL X CONVERT DRILL DEEPER REDRILL FRACTURE OR
STIMULATE PLUG OFF OLD FORMATION PERFORATE NEW
FORMATION OTHER PHYSICAL CHANGE IN WELL (SPECIFY)

PLUG AND ABANDON CLEAN OUT AND REPLUG
TARGET FORMATION POCAHONTAS NO. 3 AND PENN. COALS ESTIMATED DEPTH 1290'
WELL OPERATOR CDX GAS, LLC DESIGNATED AGENT JOSEPH ZUPANICK
ADDRESS P.O. BOX 609 ADDRESS P.O. BOX 609
PINEVILLE, WV 24874 PINEVILLE, WV 24874

WYO 2039 CANCEL

WEST VIRGINIA STATE PLANE COORDINATES

NAD 27
N 191,891.9891
E 1,822,366.7151

8425'

LATITUDE 37° 32' 30"

LONGITUDE 81° 35' 00"

5925'

U.S. Steel Mining Company, LLC -
Surface, Coal, Oil and Gas
CNG Transmission Corporation -
Oil and Gas Lessee
CDX Gas, LLC - CBM Lessee

Pocahontas Land Corporation -
Coal
Penn Virginia Oil and Gas Corporation -
Oil and Gas
Cabot Oil and Gas Corporation
Oil and Gas Lessee

95-D
95-E
95-A
95-E
Proposed Gas Well
Elev. 2061.10

Topo Location

Adverse Surface

Adverse Surface

REFERENCES

Ref. 1 - PK Nail in
12" Hickory

Ref. 2 - PK Nail in
16" Black Oak

N 5° 36' 12" E
284.51'

N 27° 04' 25" E
206.04'

PROPOSED
GAS Well
95-C

Notes:

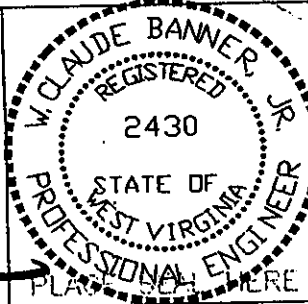
No known domestic water supplies within 1000 feet.

(+) Denotes location of well on USGS map.

FILE No. CDXGAS
DRAWING NAME \CDXGAS\PLAT
DRAWING NAME 95-C
SCALE 1" = 1000'
MINIMUM DEGREE OF
ACCURACY 1 : 2500
PROVEN SOURCE OF
ELEVATION GPS - GLOBAL
POSITIONING SYSTEM

I THE UNDERSIGNED, HEREBY CERTIFY THAT
THIS PLAT IS CORRECT TO THE BEST OF MY
KNOWLEDGE AND BELIEF AND SHOWS ALL THE
INFORMATION REQUIRED BY LAW AND THE REGU-
LATIONS ISSUED AND PRESCRIBED BY THE
DEPARTMENT OF MINES.

(SIGNED) *W. Claude Banner, Jr.*
R.P.E. 2430 R.P.S.



STATE OF WEST VIRGINIA
DIVISION OF ENVIRONMENTAL PROTECTION
OFFICE OF OIL AND GAS
NITRO, WV

DATE March 30, 2001
OPERATOR'S WELL No. 95-C
API WELL No. 47 - 109 - 02039C
STATE COUNTY PERMIT

WELL TYPE: OIL GAS CBM LIQUID INJECTION WASTE DISPOSAL
(IF "GAS") PRODUCTION X STORAGE DEEP SHALLOW
LOCATION: ELEVATION 2061.10 WATER SHED BEE BRANCH OF INDIAN CREEK
DISTRICT CENTER COUNTY WYOMING
QUADRANGLE PINEVILLE, WV

SURFACE OWNER U.S. STEEL MINING COMPANY, LLC ACREAGE 37977.66
CBM ROYALTY OWNER U.S. STEEL MINING COMPANY, LLC LEASE ACREAGE

LEASE No.

MAY 18 2001

PROPOSED WORK: DRILL X CONVERT DRILL DEEPER REDRILL FRACTURE OR
STIMULATE PLUG OFF OLD FORMATION PERFORATE NEW
FORMATION OTHER PHYSICAL CHANGE IN WELL (SPECIFY)

PLUG AND ABANDON CLEAN OUT AND REPLUG
TARGET FORMATION POCAHONTAS NO. 3 AND PENN. COALS ESTIMATED DEPTH 1290'
WELL OPERATOR CDX GAS, LLC DESIGNATED AGENT JOSEPH ZUPANICK
ADDRESS P.O. BOX 609 ADDRESS P.O. BOX 609

