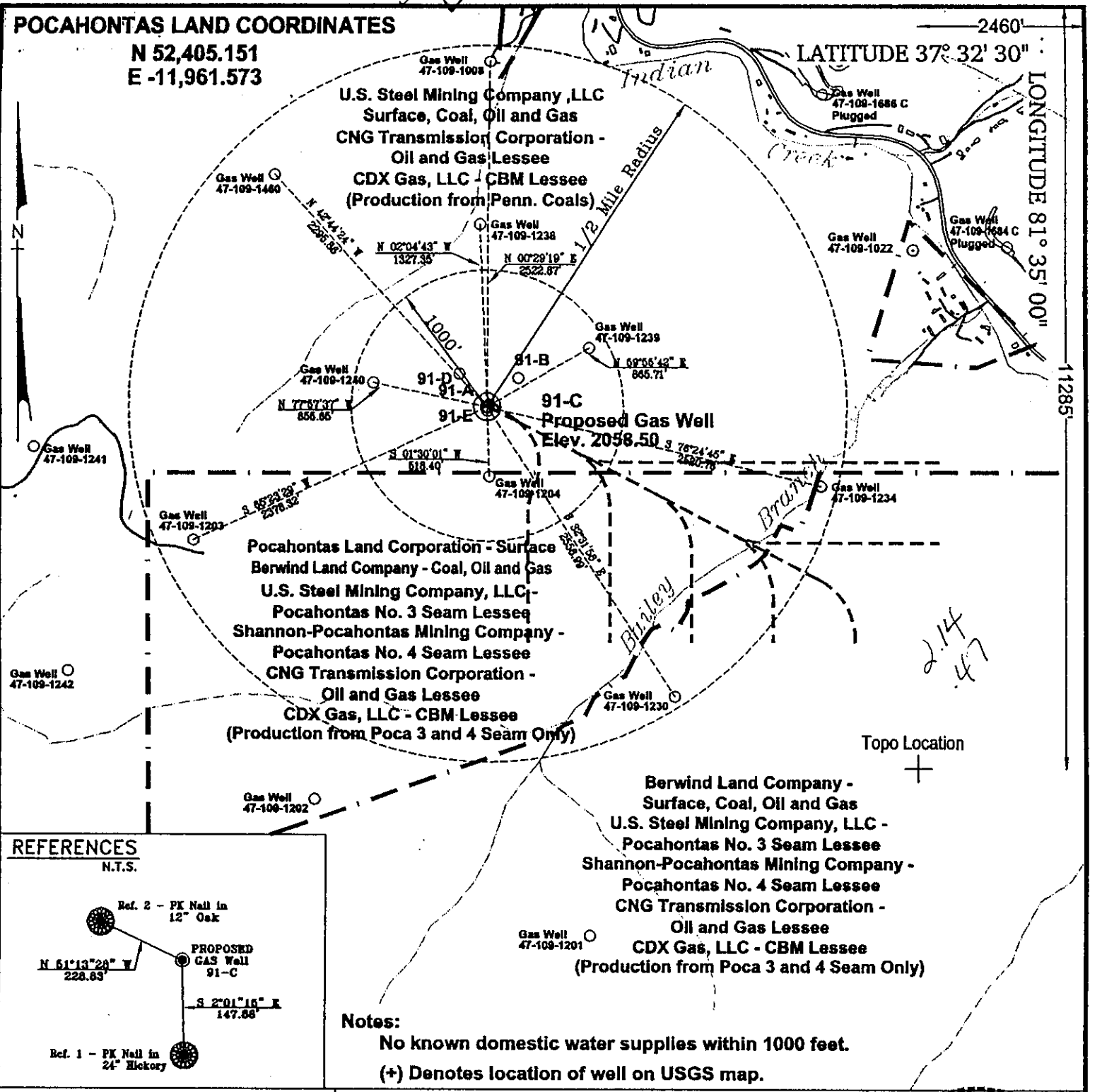


POCAHONTAS LAND COORDINATES

N 52,405.151
E -11,961.573

LATITUDE 37° 32' 30"

LONGITUDE 81° 35' 00"



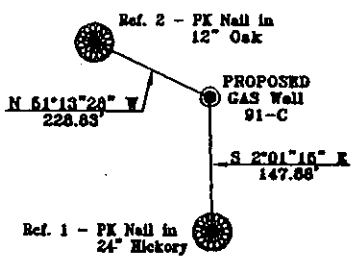
U.S. Steel Mining Company, LLC
Surface, Coal, Oil and Gas
CNG Transmission Corporation -
Oil and Gas Lessee
CDX Gas, LLC - CBM Lessee
(Production from Penn. Coals)

Pocahontas Land Corporation - Surface
Berwind Land Company - Coal, Oil and Gas
U.S. Steel Mining Company, LLC -
Pocahontas No. 3 Seam Lessee
Shannon-Pocahontas Mining Company -
Pocahontas No. 4 Seam Lessee
CNG Transmission Corporation -
Oil and Gas Lessee
CDX Gas, LLC - CBM Lessee
(Production from Poca 3 and 4 Seam Only)

Berwind Land Company -
Surface, Coal, Oil and Gas
U.S. Steel Mining Company, LLC -
Pocahontas No. 3 Seam Lessee
Shannon-Pocahontas Mining Company -
Pocahontas No. 4 Seam Lessee
CNG Transmission Corporation -
Oil and Gas Lessee
CDX Gas, LLC - CBM Lessee
(Production from Poca 3 and 4 Seam Only)

REFERENCES

N.T.S.



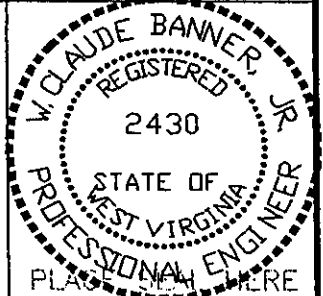
Notes:

No known domestic water supplies within 1000 feet.

(+) Denotes location of well on USGS map.

FILE No. CDXGAS
DRAWING NAME \CDXGAS\PLAT
Drawing Number 12-7-00-8SP
SCALE 1" = 1000'
MINIMUM DEGREE OF
ACCURACY 1 : 2500
PROVEN SOURCE OF
ELEVATION GPS - GLOBAL
POSITIONING SYSTEM

I THE UNDERSIGNED, HEREBY CERTIFY THAT THIS PLAT IS CORRECT TO THE BEST OF MY KNOWLEDGE AND BELIEF AND SHOWS ALL THE INFORMATION REQUIRED BY LAW AND THE REGULATIONS ISSUED AND PRESCRIBED BY THE DEPARTMENT OF MINES.
(SIGNED) *W. Claude Banner Jr.*
R.P.E. 2430 R.P.S.



**STATE OF WEST VIRGINIA
DIVISION OF ENVIRONMENTAL PROTECTION
OFFICE OF OIL AND GAS
NITRO, WV**

DATE DECEMBER 7, 2000
OPERATOR'S WELL No. 91-C
API WELL No. 47 - 109 - 01973C
STATE COUNTY PERMIT

WELL TYPE: OIL GAS CBM LIQUID INJECTION WASTE DISPOSAL
(IF "GAS") PRODUCTION X STORAGE DEEP SHALLOW
LOCATION: ELEVATION 2058.50 WATER SHED UNNAMED TRIBUTARY OF INDIAN CREEK; BAILEY BRANCH OF INDIAN CREEK
DISTRICT CENTER COUNTY WYOMING
QUADRANGLE PINEVILLE, WV

SURFACE OWNER U.S. STEEL MINING COMPANY, LLC ACREAGE 37977.66
CBM ROYALTY OWNER U.S. STEEL MINING COMPANY, LLC LEASE ACREAGE USM - 4498.52
BERWIND LAND COMPANY BER - 2940.66
LEASE No. _____

PROPOSED WORK: DRILL X CONVERT DRILL DEEPER REDRILL FRACTURE OR
STIMULATE PLUG OFF OLD FORMATION PERFORATE NEW
FORMATION OTHER PHYSICAL CHANGE IN WELL (SPECIFY) _____

PLUG AND ABANDON CLEAN OUT AND REPLUG
TARGET FORMATION POCAHONTAS NO. 3 ESTIMATED DEPTH 1326'
WELL OPERATOR CDX GAS, LLC VICE PRESIDENT-OPERATIONS JOSEPH ZUPANICK
ADDRESS P.O. BOX 609 ADDRESS P.O. BOX 609
PINEVILLE, WV 24874 PINEVILLE, WV 24874

6-1-277

JAN 12 2001

WYO 1973 C

Details of Perforated Intervals, Fracturing or Stimulation, Physical Change, Etc.

N/A

Well Log & Geologic Record - Depths from K.B.

Formation	Top	Bottom
Overburden	0	5
Shale	5	90
Sandy shale	90	124
Shale	124	154
Coal	154	157
Sandy shale	157	227
Shale	227	325
Sandy shale	340	375
Shale	375	448
Sandy shale	448	508
Shale	508	579
Coal	579	581
Shale	581	630
Sandy shale	630	672
Shale	672	677
Sandy shale	677	704
Shale	704	710
Sandy shale	710	800
Shale	800	882
Sandy shale	882	924
Shale	924	980
Coal	980	983
Sandy shale	983	1010
Shale	1010	1079
Sandstone	1079	1232
Coal	1232	1236
Sandy shale	1236	1261
Sandstone	1261	1296
Coal	1296	1300
Sandy shale	1300	1355
Coal	1355	1360
Sandy Shale	1360	1420

