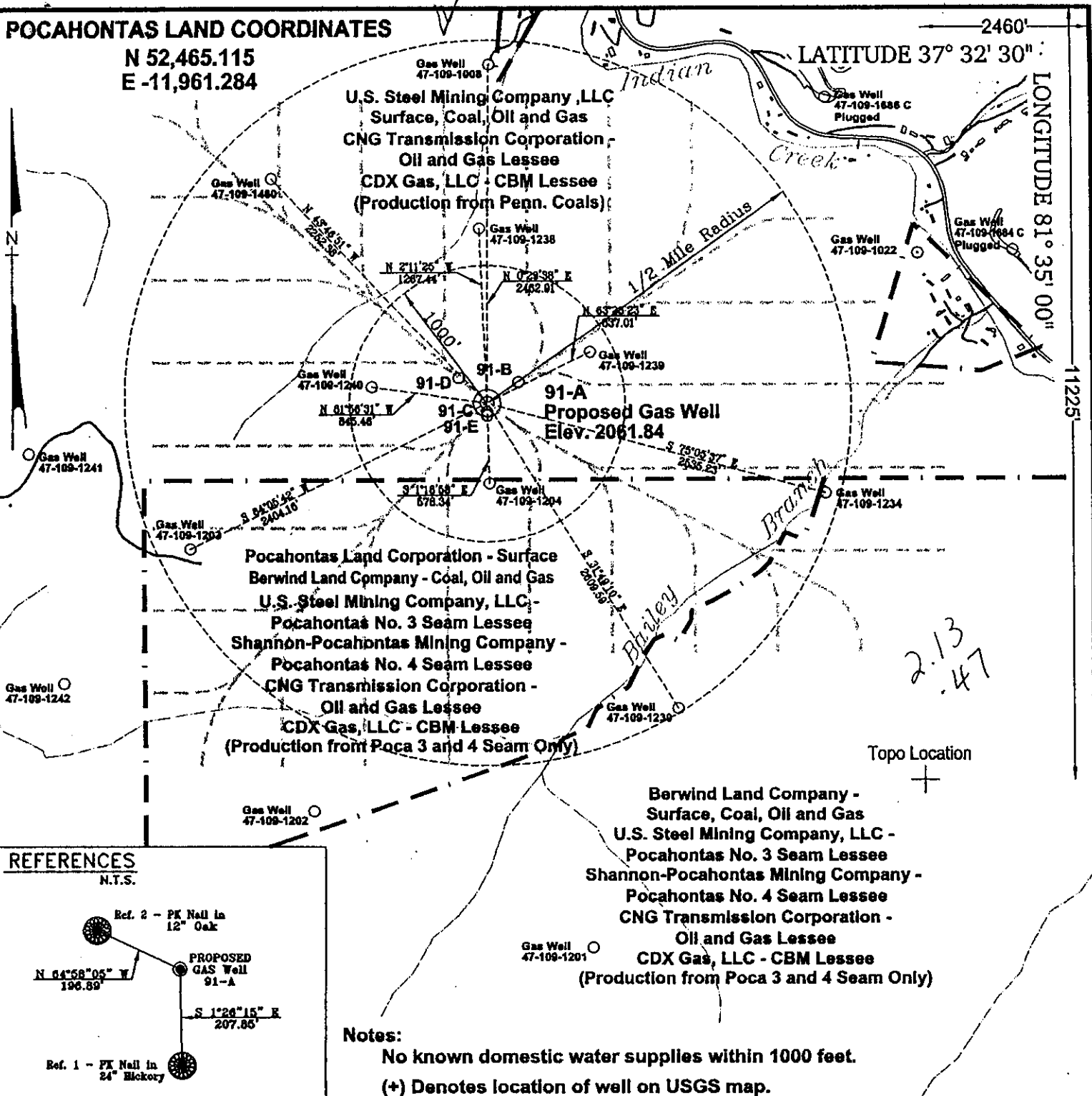


POCAHONTAS LAND COORDINATES

N 52,465.115
E -11,961.284

LATITUDE 37° 32' 30"

LONGITUDE 81° 35' 00"



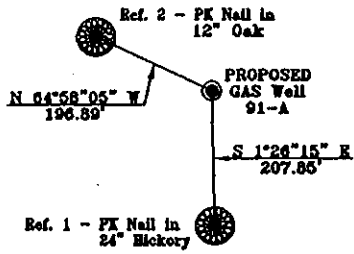
U.S. Steel Mining Company, LLC
Surface, Coal, Oil and Gas
CNG Transmission Corporation -
Oil and Gas Lessee
CDX Gas, LLC - CBM Lessee
(Production from Penn. Coals)

Pocahontas Land Corporation - Surface
Berwind Land Company - Coal, Oil and Gas
U.S. Steel Mining Company, LLC -
Pocahontas No. 3 Seam Lessee
Shannon-Pocahontas Mining Company -
Pocahontas No. 4 Seam Lessee
CNG Transmission Corporation -
Oil and Gas Lessee
CDX Gas, LLC - CBM Lessee
(Production from Poca 3 and 4 Seam Only)

Berwind Land Company -
Surface, Coal, Oil and Gas
U.S. Steel Mining Company, LLC -
Pocahontas No. 3 Seam Lessee
Shannon-Pocahontas Mining Company -
Pocahontas No. 4 Seam Lessee
CNG Transmission Corporation -
Oil and Gas Lessee
CDX Gas, LLC - CBM Lessee
(Production from Poca 3 and 4 Seam Only)

REFERENCES

N.T.S.

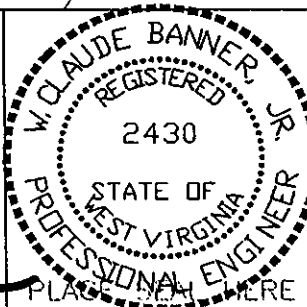


Notes:

No known domestic water supplies within 1000 feet.
(+) Denotes location of well on USGS map.

FILE No. CDXGAS
DRAWING NAME \CDXGAS\PLAT
Drawing Number 12-7-00-6SP
SCALE 1" = 1000'
MINIMUM DEGREE OF ACCURACY 1 : 2500
PROVEN SOURCE OF ELEVATION GPS - GLOBAL POSITIONING SYSTEM

I THE UNDERSIGNED, HEREBY CERTIFY THAT THIS PLAT IS CORRECT TO THE BEST OF MY KNOWLEDGE AND BELIEF AND SHOWS ALL THE INFORMATION REQUIRED BY LAW AND THE REGULATIONS ISSUED AND PRESCRIBED BY THE DEPARTMENT OF MINES.
(SIGNED) W. Claude Banner, Jr.
R.P.E. 2430 R.P.S.



**STATE OF WEST VIRGINIA
DIVISION OF ENVIRONMENTAL PROTECTION
OFFICE OF OIL AND GAS
NITRO, WV**

DATE DECEMBER 11, 2000
OPERATOR'S WELL No. 91-A
API WELL No. 47 - 109 - 01971C
STATE COUNTY PERMIT

WELL TYPE: OIL GAS CBM LIQUID INJECTION WASTE DISPOSAL
(IF "GAS") PRODUCTION X STORAGE DEEP SHALLOW
LOCATION: ELEVATION 2061.84 WATER SHED UNNAMED TRIBUTARY OF INDIAN CREEK; BAILEY BRANCH OF INDIAN CREEK
DISTRICT CENTER COUNTY WYOMING
QUADRANGLE PINEVILLE, WV

SURFACE OWNER U.S. STEEL MINING COMPANY, LLC ACREAGE 37977.66
CBM ROYALTY OWNER U.S. STEEL MINING COMPANY, LLC LEASE ACREAGE USM - 4498.52
BERWIND LAND COMPANY BER - 2940.66
LEASE No. _____

PROPOSED WORK: DRILL X CONVERT DRILL DEEPER REDRILL FRACTURE OR STIMULATE PLUG OFF OLD FORMATION PERFORATE NEW FORMATION OTHER PHYSICAL CHANGE IN WELL (SPECIFY)

PLUG AND ABANDON CLEAN OUT AND REPLUG
TARGET FORMATION POCAHONTAS NO. 3 ESTIMATED DEPTH 1330'
WELL OPERATOR CDX GAS, LLC VICE PRESIDENT-OPERATIONS JOSEPH ZUPANICK
ADDRESS P.O. BOX 609 ADDRESS P.O. BOX 609
PINEVILLE, WV 24874 PINEVILLE, WV 24874

Well Operator's Report of Well Work

Farm name: U.S. Steel Mining Company

Operator Well No: 91-A

Location: Elevation: 2056.22

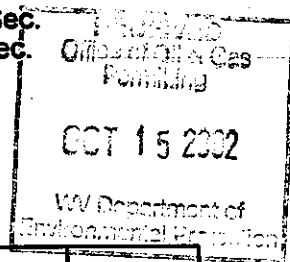
Quadrangle: Pineville

District: Center

County: WYOMING

Latitude: 11225 Feet South of 37 Deg. 32 Min. 30 Sec.
 Longitude: 2460 Feet West of 81 Deg. 35 Min. 00 Sec.

Company: CDX Gas, LLC
 P.O. Box 609
 Pineville, WV 24874



Agent: JOSEPH A. ZUPANICK

Inspector: OFIE HELMICK
 Permit Issued: 1/11/01
 Well Work commenced: 5/10/01
 Well Work completed: 11/02/01
 Verbal plugging
 Permission granted on:
 Rotary x Cable _____ Rig
 Total depth (ft) 1168'
 Fresh water depths (ft) N/A
 Salt water depths (ft) N/A
 Is coal being mined in the area (Y/N)? Y
 Coal depths (ft): 154', 579' 980'

Casing & Tubing Size	Used in Drilling	Left in Well	Cement Fill up
13 3/8"	25'	25'	Surface
9 5/8"	255'	255'	Surface
7"	964'	964'	Surface

OPEN FLOW DATA

Producing formation Non Producer
 Gas: Initial open flow N/A Mcf/d
 Final open flow N/A Mcf/d
 Pay zone depth (ft)
 Oil: Initial open flow _____ Bbl/d
 Final open flow _____ Bbl/d
 Time of open flow between initial and final tests: _____ hours
 Static rock pressure _____ psig (surface pressure) after _____ hours

Second Producing formation _____
 Gas: Initial open flow _____ Mcf/d
 Final open flow _____ Mcf/d
 Pay zone depth (ft)
 Oil: Initial open flow _____ Bbl/d
 Final open flow _____ Bbl/d
 Time of open flow between initial and final tests: _____ hours
 Static rock pressure _____ psig (surface pressure) after _____ hours

Note: ON BACK OF THIS FORM, PUT THE FOLLOWING: 1) DETAILS OF PERFORATED INTERVALS, FRACTURING OR STIMULATING, PHYSICAL CHANGE, ETC. 2) THE WELL LOG WHICH IS A SYSTEMATIC DETAILED GEOLOGICAL RECORD OF ALL FORMATIONS, INCLUDING COAL ENCOUNTERED BY THE WELLBORE.

For: Steven Pauley
 CDX Gas, LLC
 By: Steven Pauley
 Date: 5-22-02

OCT 25 2002

WYO 1971 C

Details of Perforated Intervals, Fracturing or Stimulation, Physical Change, Etc.

N/A

Well Log & Geologic Record - Depths from K.B.

Formation	Top	Bottom
Overburden	0	5
Shale	5	90
Sandy shale	90	124
Shale	124	154
Coal	154	157
Sandy shale	157	227
Shale	227	340
Sandy shale	340	375
Shale	375	448
Sandy shale	448	508
Shale	508	579
Coal	579	581
Shale	581	630
Sandy shale	630	672
Shale	672	677
Sandy shale	677	704
Shale	704	710
Sandy shale	710	800
Shale	800	882
Sandy shale	882	924
Shale	924	980
Coal	980	983
Sandy shale	983	1010
Shale	1010	1079
Sandstone	1079	1168

