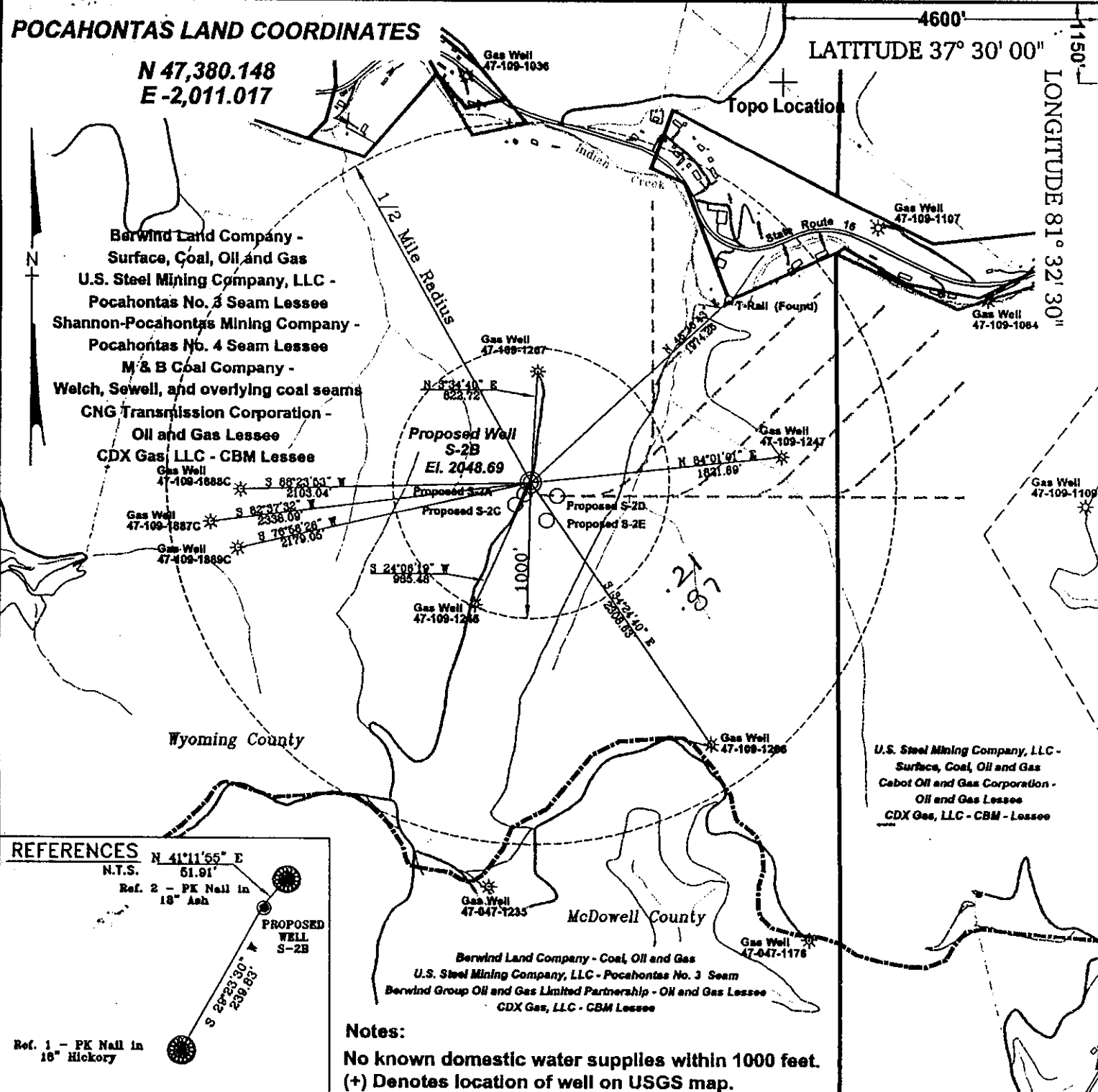


POCAHONTAS LAND COORDINATES

N 47,380.148
E -2,011.017

4600'
LATITUDE 37° 30' 00"

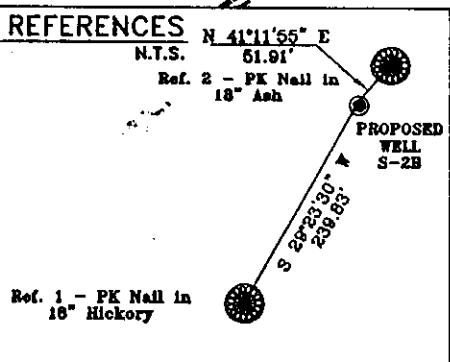
1150'
LONGITUDE 81° 32' 30"



Berwind Land Company -
Surface, Coal, Oil and Gas
U.S. Steel Mining Company, LLC -
Pocahontas No. 3 Seam Lessee
Shannon-Pocahontas Mining Company -
Pocahontas No. 4 Seam Lessee
M & B Coal Company -
Welch, Sewell, and overlying coal seams
CNG Transmission Corporation -
Oil and Gas Lessee
CDX Gas, LLC - CBM Lessee

U.S. Steel Mining Company, LLC -
Surface, Coal, Oil and Gas
Cabot Oil and Gas Corporation -
Oil and Gas Lessee
CDX Gas, LLC - CBM - Lessee

Berwind Land Company - Coal, Oil and Gas
U.S. Steel Mining Company, LLC - Pocahontas No. 3 Seam
Berwind Group Oil and Gas Limited Partnership - Oil and Gas Lessee
CDX Gas, LLC - CBM Lessee

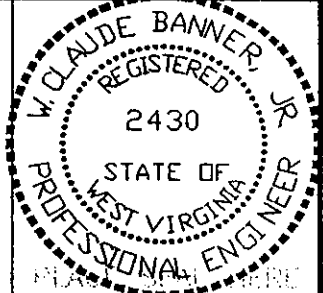


Notes:
No known domestic water supplies within 1000 feet.
(+) Denotes location of well on USGS map.

FILE No. CDXGAS
DRAWING NAME \PLAT\S-2B
Drawing Number 8-30-00-2SP
SCALE 1" = 1000'
MINIMUM DEGREE OF ACCURACY 1 : 2500
PROVEN SOURCE OF ELEVATION USGS B.M. F44
El. 1565

I THE UNDERSIGNED, HEREBY CERTIFY THAT THIS PLAT IS CORRECT TO THE BEST OF MY KNOWLEDGE AND BELIEF AND SHOWS ALL THE INFORMATION REQUIRED BY LAW AND THE REGULATIONS ISSUED AND PRESCRIBED BY THE DEPARTMENT OF MINES.

(SIGNED) *W. Claude Banner, Jr.*
R.P.E. 2430 R.P.S.



STATE OF WEST VIRGINIA
DIVISION OF ENVIRONMENTAL PROTECTION
OFFICE OF OIL AND GAS
NITRO, WV

DATE SEPTEMBER 11 20 00
OPERATOR'S WELL No. S-2B
API WELL No. 47 - 109 - 019490

WELL TYPE: OIL GAS CBM LIQUID INJECTION WASTE DISPOSAL STATE WV COUNTY WYOMING PERMIT HORIZONTAL WELL
(IF "GAS") PRODUCTION X STORAGE DEEP SHALLOW

LOCATION: ELEVATION 2048.69 WATER SHED UNNAMED TRIBUTARY OF INDIAN CREEK
DISTRICT CENTER COUNTY WYOMING
QUADRANGLE WELCH, WV

SURFACE OWNER BERWIND LAND COMPANY ACREAGE 867.22 Tax Map 143 - Parcel 1
CBM ROYALTY OWNER BERWIND LAND COMPANY LEASE ACREAGE 2940.66
CBM ROYALTY OWNER U.S. STEEL MINING COMPANY, LLC

LEASE No. _____
PROPOSED WORK: DRILL X CONVERT _____ DRILL DEEPER _____ REDRILL _____ FRACTURE OR STIMULATE _____ PLUG OFF OLD FORMATION _____ PERFORATE NEW FORMATION _____ OTHER PHYSICAL CHANGE IN WELL (SPECIFY) OCT 06 2000

PLUG AND ABANDON _____ CLEAN OUT AND REPLUG _____
TARGET FORMATION POCAHONTAS NO. 3 & NO. 4 SEAM ESTIMATED DEPTH 1101'
WELL OPERATOR CDX GAS, LLC MANAGER JOSEPH ZUPANICK
ADDRESS P.O. BOX 609 ADDRESS P.O. BOX 609
PINEVILLE, WV 24874 PINEVILLE, WV 24874

6-6 0

WYO 1949 C

State of West Virginia
Division of Environmental Protection
Section of Oil & Gas

ABZ

Well Operator's Report of Well Work

Farm name: Berwind Land Company

Operator Well No: S-2B

Location: Elevation: 2,046.98

Quadrangle: WELCH

District: CENTER

County: WYOMING

Latitude: 1150 Feet South of 37 Deg. 30 Min. 00 Sec.
Longitude: 4600 Feet West of 81 Deg. 32 Min. 30 Sec.

Company: CDX Gas, LLC
P.O. Box 609
Pineville, WV 24874

Agent: JOSEPH A. ZUPANICK

Inspector: OFIE HELMICK
Permit Issued: 10/02/00
Well Work commenced: 12/11/00
Well Work completed: 03/09/01
Verbal plugging
Permission granted on: _____
Rotary x Cable _____ Rig
Total depth (ft) 1164
Fresh water depths (ft) N/A
Salt water depths (ft) N/A
Is coal being mined in the area (Y/N)? Y
Coal depths (ft): Poca #4 1014 - 1019
Poca #3 1081 - 1086

Casing & Tubing Size	Used in Drilling	Left in Well	Cement Fill up
13 3/8"	25'	25'	Surface
9 5/8"	304'	304'	Surface
7"	951'	951'	Surface

RECEIVED
 Office of Oil & Gas
 Permitting

JUN 11 2001

 WV Division of
 Environmental Protection

OPEN FLOW DATA

Producing formation Pocahontas #3 Pay zone depth (ft) _____
 Gas: Initial open flow N/A Mcf/d Oil: Initial open flow _____ Bbl/d
 Final open flow N/A Mcf/d Final open flow _____ Bbl/d
 Time of open flow between initial and final tests: _____ hours
 Static rock pressure _____ psig (surface pressure) after _____ hours

Second Producing formation _____ Pay zone depth (ft) _____
 Gas: Initial open flow N/A Mcf/d Oil: Initial open flow _____ Bbl/d
 Final open flow N/A Mcf/d Final open flow _____ Bbl/d
 Time of open flow between initial and final tests: _____ hours
 Static rock pressure _____ psig (surface pressure) after _____ hours

Note: ON BACK OF THIS FORM, PUT THE FOLLOWING: 1) DETAILS OF PERFORATED INTERVALS, FRACTURING OR STIMULATING, PHYSICAL CHANGE, ETC. 2) THE WELL LOG WHICH IS A SYSTEMATICK DETAILED GEOLOGICAL RECORD OF ALL FORMATIONS, INCLUDING COAL ENCOUNTERED BY THE WELLBORE.

Joseph Zupanick
For: CDX Gas, LLC
By: *J.A. Zupanick*
Date: 6/01/01

JUN 15 2001

WYOM. 1949 C

Operator: S-2B
API No. 47- 109-01949 C
Location: Wyoming County

Details of Perforated Intervals, Fracturing or Stimulation, Physical Change, Etc.

Horizontally drilled Pocahontas #3 coal seam.

Well Log & Geologic Record - Depths from K.B.

Formation	Top	Bottom
Overburden	0	5
Sand	5	17
Sandstone	17	25
Sand / Shale	25	140
Sand / Shale	140	180
Sandstone	180	320
Sand / Shale	320	461
Shale	461	680
Sand	680	892
Shale	892	992
Sand	992	1014
Coal - Poca #4	1014	1019
Shale	1019	1081
Coal - Poca #3	1081	1086
Sand / Shales	1086	1164
Total Depth	1164	

