

POCAHONTAS LAND COORDINATES

N 64,253.459
E -6,875.838

LATITUDE 37° 35' 00"

LONGITUDE 81° 32' 30"

U.S. Steel Mining Company, LLC -
Oil and Gas, Coal less Poca No. 3 Seam

Georgia Pacific Corporation - Fee Tract
Blazer Energy Corporation - Oil and Gas Lessee

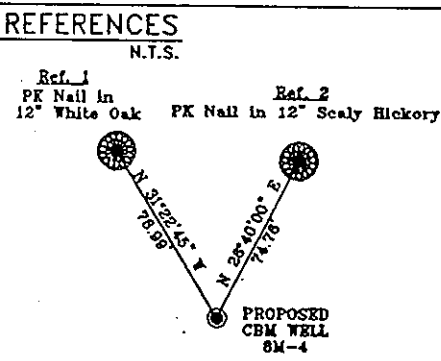
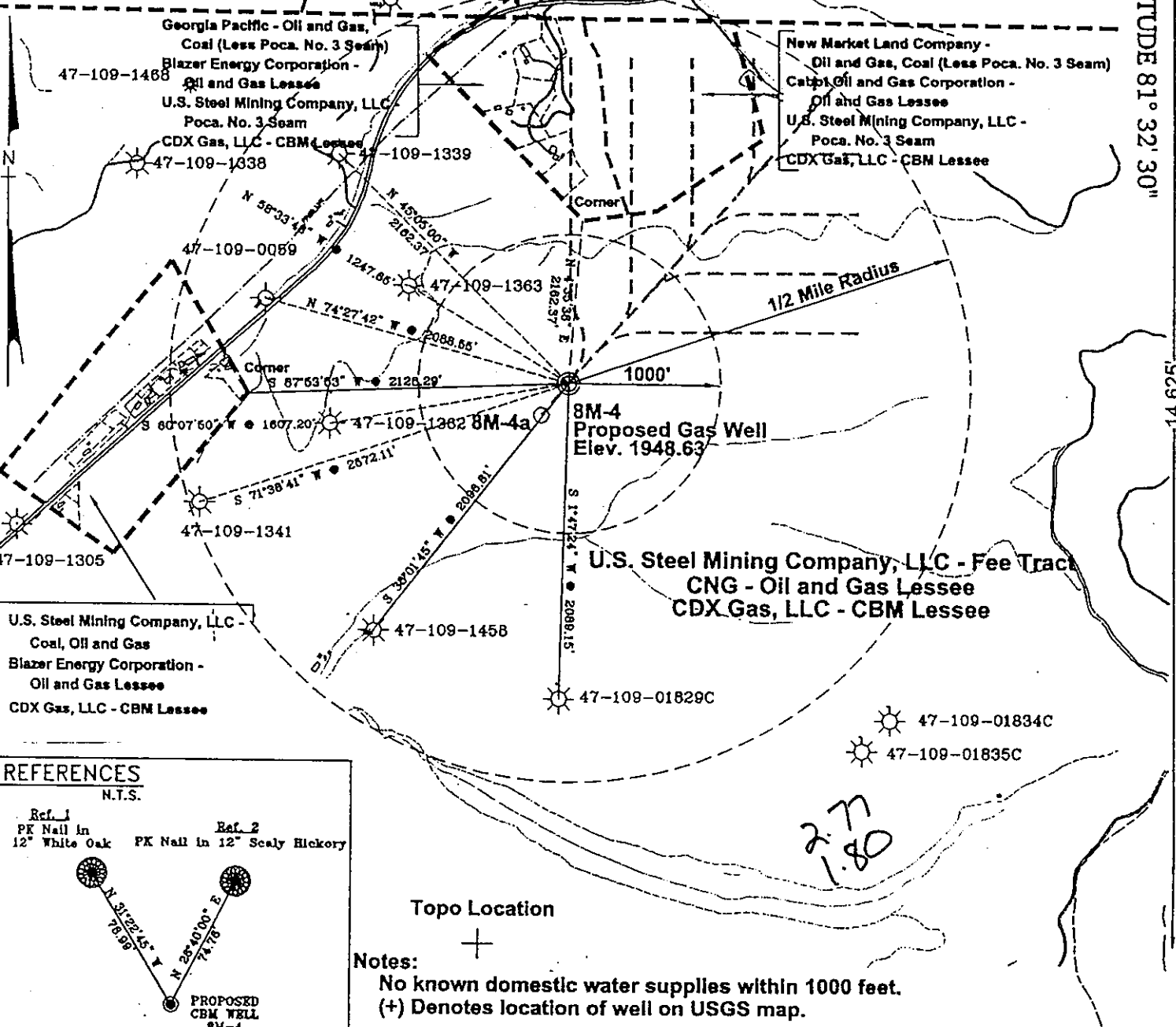
Georgia Pacific - Oil and Gas,
Coal (Less Poca. No. 3 Seam)
Blazer Energy Corporation -
Oil and Gas Lessee

New Market Land Company -
Oil and Gas, Coal (Less Poca. No. 3 Seam)
Capp Oil and Gas Corporation -
Oil and Gas Lessee
U.S. Steel Mining Company, LLC -
Poca. No. 3 Seam
CDX Gas, LLC - CBM Lessee

U.S. Steel Mining Company, LLC
Poca. No. 3 Seam

CDX Gas, LLC - CBM Lessee

U.S. Steel Mining Company, LLC - Fee Tract
CNG - Oil and Gas Lessee
CDX Gas, LLC - CBM Lessee

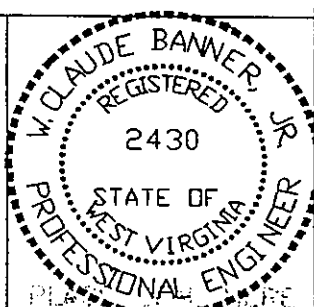


Notes:
No known domestic water supplies within 1000 feet.
(+) Denotes location of well on USGS map.

FILE No. CDX
DRAWING NAME \PLATS\8M-4
Drawing Number 10-13-99-1SP
SCALE 1" = 1000'
MINIMUM DEGREE OF
ACCURACY 1 : 2500
PROVEN SOURCE OF
ELEVATION USGS B.M. F44
ELEV. 1565

I THE UNDERSIGNED, HEREBY CERTIFY THAT THIS PLAT IS CORRECT TO THE BEST OF MY KNOWLEDGE AND BELIEF AND SHOWS ALL THE INFORMATION REQUIRED BY LAW AND THE REGULATIONS ISSUED AND PRESCRIBED BY THE DEPARTMENT OF MINES.

(SIGNED) *W. Claude Banner, Jr.*
R.P.E. 2430 R.P.S.



STATE OF WEST VIRGINIA
DIVISION OF ENVIRONMENTAL PROTECTION
OFFICE OF OIL AND GAS
NITRO, WV

DATE MARCH 30 2000
OPERATOR'S WELL No. 8M-4
API WELL No. 47 - 109 - 01923C
STATE COUNTY PERMIT

WELL TYPE: OIL GAS CBM LIQUID INJECTION WASTE DISPOSAL
(IF "GAS") PRODUCTION X STORAGE DEEP SHALLOW

LOCATION: ELEVATION 1948.63 WATER SHED LICK BRANCH OF INDIAN CREEK
DISTRICT CENTER COUNTY WYOMING
QUADRANGLE PINEVILLE, WV

SURFACE OWNER U.S. STEEL MINING COMPANY, LLC ACREAGE 37977.66
CBM ROYALTY OWNER U.S. STEEL MINING COMPANY, LLC LEASE ACREAGE

LEASE No. _____

PROPOSED WORK: DRILL X CONVERT _____ DRILL DEEPER _____ REDRILL _____ FRACTURE OR
STIMULATE _____ PLUG OFF OLD FORMATION _____ PERFORATE NEW
FORMATION _____ OTHER PHYSICAL CHANGE IN WELL (SPECIFY) _____

PLUG AND ABANDON _____ CLEAN OUT AND REPLUG _____

TARGET FORMATION POCAHONTAS NO. 3 ESTIMATED DEPTH 1158'
WELL OPERATOR CDX GAS, LLC MANAGER JOSEPH ZUPANICK
ADDRESS P.O. BOX 609 ADDRESS P.O. BOX 609
PINEVILLE, WV 24874 PINEVILLE, WV 24874

6-60

MAY 19 2000

WYO 1923 C

State of West Virginia
Division of Environmental Protection
Section of Oil & Gas

Reviewed AL

Well Operator's Report of Well Work

Farm name: U.S. Steel Mining Company, LLC

Operator Well No: 8M-4

Location: Elevation: 1940.87

Quadrangle: PINEVILLE

District: CENTER

County: WYOMING

Latitude: 14,625 Feet South of 37 Deg. 35 Min. 00 Sec.

Longitude: 9,475 Feet West of 81 Deg. 32 Min. 30 Sec.

Company: CDX Gas, LLC
5485 BELTLINE ROAD, SUITE 280
DALLAS, TX 75240-0000

RECEIVED
Office of Oil & Gas
Permitting
NOV 06 2000
WV Division of
Environmental Protection

Agent: JOSEPH A. ZUPANICK

Inspector: OFIE HELMICK
Permit Issued: 04/03/00
Well Work commenced: 05/10/00
Well Work completed: 06/10/00
Verbal plugging
Permission granted on:
Rotary x Cable _____ Rig
Total depth (ft) 1213.82
Fresh water depths (ft) N/A
Salt water depths (ft) N/A
Is coal being mined in the area (Y/N)? Y
Coal depths (ft): 43, 670, 1049, 1150

Casing & Tubing Size	Used in Drilling	Left in Well	Environmental Protection Cement Fill up
13 3/8"	35'	35'	10 Ft ³
9 5/8"	985'	985'	309 Ft ³
7"	289'	289'	44 Ft ³
2 7/8"	1144'	0	0

OPEN FLOW DATA

Producing formation Pocahontas No. 3 Seam

Pay zone depth (ft) _____

Gas: Initial open flow N/A Mcf/d
Final open flow N/A Mcf/d

Oil: Initial open flow _____ Bbl/d
Final open flow _____ Bbl/d

Time of open flow between initial and final tests: _____ hours

Static rock pressure _____ psig (surface pressure) after _____ hours

Second Producing formation _____

Pay zone depth (ft) _____

Gas: Initial open flow N/A Mcf/d
Final open flow N/A Mcf/d

Oil: Initial open flow _____ Bbl/d
Final open flow _____ Bbl/d

Time of open flow between initial and final tests: _____ hours

Static rock pressure _____ psig (surface pressure) after _____ hours

Note: ON BACK OF THIS FORM, PUT THE FOLLOWING: 1) DETAILS OF PERFORATED INTERVALS, FRACTURING OR STIMULATING, PHYSICAL CHANGE, ETC. 2) THE WELL LOG WHICH IS A SYSTEMATICK DETAILED GEOLOGICAL RECORD OF ALL FORMATIONS, INCLUDING COAL ENCOUNTERED BY THE WELLBORE.

For: CDX Gas, LLC
By: J.A. Zupanick
Date: 10/22/00

NOV 23 2000

WYO 1923 C

Operator: 8M-4
 API No. 47-109-01923 C
 Location: Pineville

Details of Perforated Intervals, Fracturing or Stimulation, Physical Change, Etc.

Well Log & Geologic Record

Formation	Top	Bottom
Sandstone	0	40
Shale	40	43
Coal	43	45
Shale	45	50
Sandstone	50	130
Sandy Shale	130	144
Shale	144	160
Sandstone	160	215
Sandy Shale	215	310
Sandstone	310	347
Sandy Shale	347	378
Shale	378	404
Sandstone	404	407
Sandy Shale	407	418
Sandstone	418	529
Shale	529	558
Sandstone	558	668
Shale	668	670
Coal	670	671
Shale	671	686
Sandstone	686	745
Shale	745	763
Sandstone	763	767
Shale	767	880
Sandstone	880	924
Shale	924	930
Sandstone	930	1005
Sandy Shale	1005	1034
Shale	1034	1049
Coal	1049	1050
Shale	1050	1089
Sandstone	1089	1141
Shale	1141	1150
Coal	1150	1155
Shale	1155	1183
Sandy Shale	1183	1213.82

RECEIVED
 Office of Oil & Gas
 Permitting
 NOV 06 2000
 WV Division of
 Environmental Protection