

POCAHONTAS LAND COORDINATES

N 64,041.560
E -7,056.541

9650'

LATITUDE 37° 35' 00"

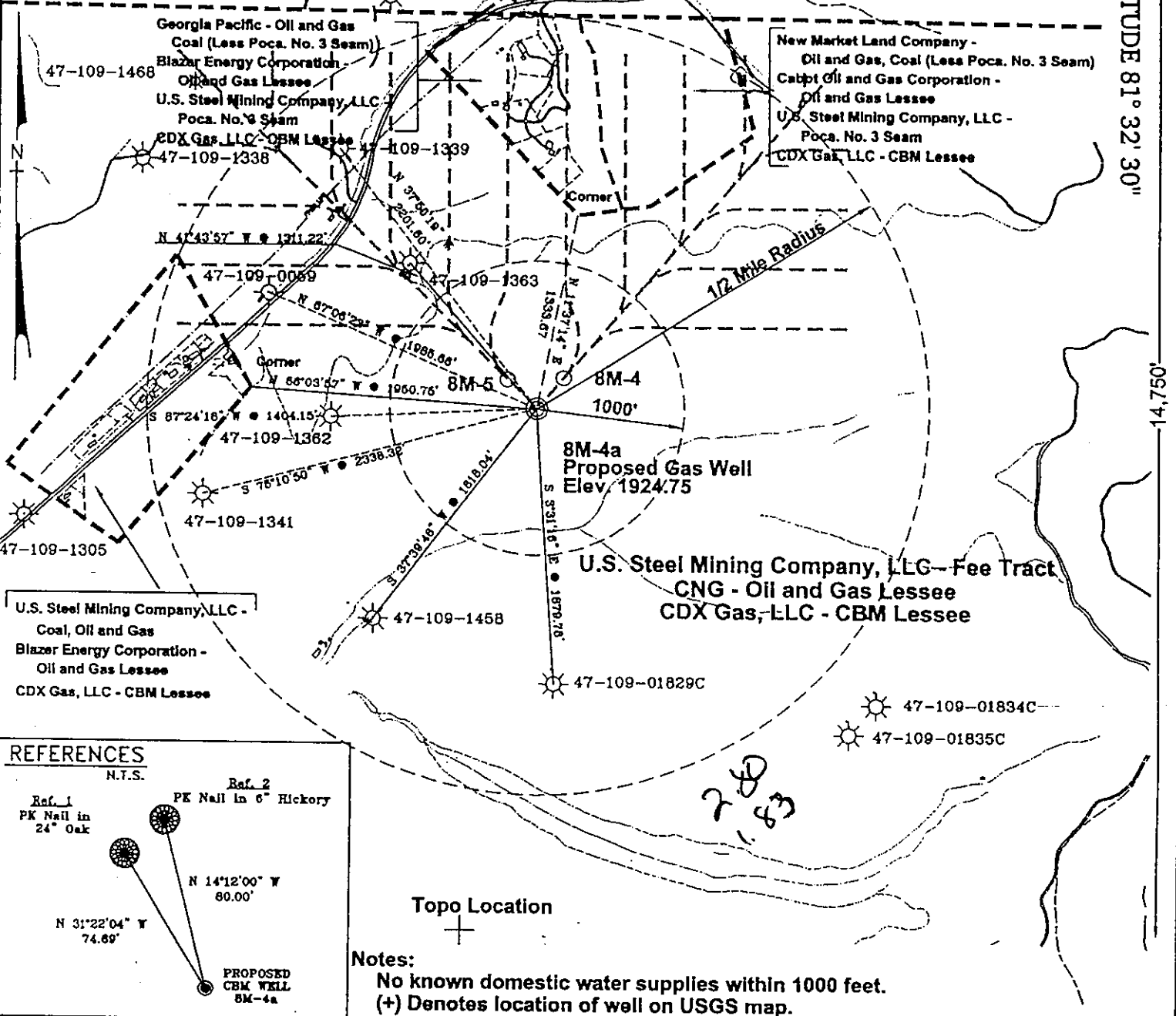
LONGITUDE 81° 32' 30"

U.S. Steel Mining Company, LLC -
Oil and Gas, Coal less Poca No. 3 Seam

Georgia Pacific Corporation - Fee Tract
Blazer Energy Corporation - Oil and Gas Lessee

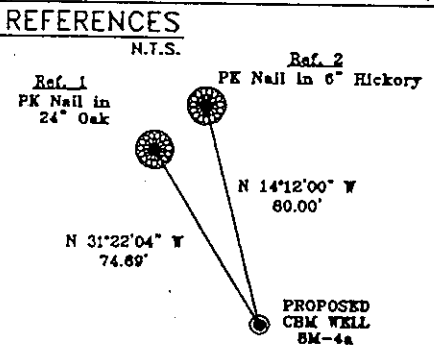
Georgia Pacific - Oil and Gas
Coal (Less Poca. No. 3 Seam)
Blazer Energy Corporation -
Oil and Gas Lessee
U.S. Steel Mining Company, LLC -
Poca. No. 3 Seam
CDX Gas, LLC - CBM Lessee

New Market Land Company -
Oil and Gas, Coal (Less Poca. No. 3 Seam)
Cabot Oil and Gas Corporation -
Oil and Gas Lessee
U.S. Steel Mining Company, LLC -
Poca. No. 3 Seam
CDX Gas, LLC - CBM Lessee



U.S. Steel Mining Company, LLC -
Coal, Oil and Gas
Blazer Energy Corporation -
Oil and Gas Lessee
CDX Gas, LLC - CBM Lessee

U.S. Steel Mining Company, LLC - Fee Tract
CNG - Oil and Gas Lessee
CDX Gas, LLC - CBM Lessee

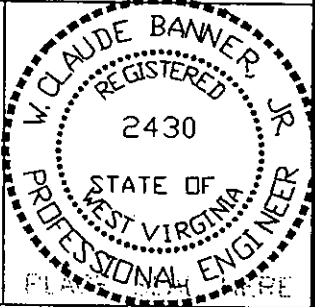


Notes:
No known domestic water supplies within 1000 feet.
(+) Denotes location of well on USGS map.

FILE No. CDX
DRAWING NAME \PLATS\8M-4g
Drawing Number 10-13-99-2SP
SCALE 1" = 1000'
MINIMUM DEGREE OF
ACCURACY 1 : 2500
PROVEN SOURCE OF
ELEVATION USGS B.M. F44
ELEV. 1565

I THE UNDERSIGNED, HEREBY CERTIFY THAT
THIS PLAT IS CORRECT TO THE BEST OF MY
KNOWLEDGE AND BELIEF AND SHOWS ALL THE
INFORMATION REQUIRED BY LAW AND THE REGU-
LATIONS ISSUED AND PRESCRIBED BY THE
DEPARTMENT OF MINES.

(SIGNED) *W. Claude Banner, Jr.*
R.P.E. 2430 R.P.S.



**STATE OF WEST VIRGINIA
DIVISION OF ENVIRONMENTAL PROTECTION
OFFICE OF OIL AND GAS
NITRO, WV**

DATE MARCH 30 2000
OPERATOR'S WELL No. 8M-4a
API WELL No. 47 - 109 - 01922C

WELL TYPE: OIL GAS CBM LIQUID INJECTION WASTE DISPOSAL
(IF "GAS") PRODUCTION X STORAGE DEEP SHALLOW
LOCATION: ELEVATION 1924.75 WATER SHED LICK BRANCH OF INDIAN CREEK
DISTRICT CENTER COUNTY WYOMING
QUADRANGLE PINEVILLE, WV
SURFACE OWNER U.S. STEEL MINING COMPANY, LLC ACREAGE 37977.66
CBM ROYALTY OWNER U.S. STEEL MINING COMPANY, LLC LEASE ACREAGE

LEASE No. _____
PROPOSED WORK: DRILL X CONVERT DRILL DEEPER REDRILL FRACTURE OR
STIMULATE PLUG OFF OLD FORMATION PERFORATE NEW
FORMATION OTHER PHYSICAL CHANGE IN WELL (SPECIFY)
PLUG AND ABANDON CLEAN OUT AND REPLUG
TARGET FORMATION POCAHONTAS NO. 3 ESTIMATED DEPTH 1139'
WELL OPERATOR CDX GAS, LLC MANAGER JOSEPH ZUPANICK
ADDRESS P.O. BOX 609 ADDRESS P.O. BOX 609
PINEVILLE, WV 24874 PINEVILLE, WV 24874

6-6 0

MAY 19 2000

WYO 1922 C

State of West Virginia
Division of Environmental Protection
Section of Oil & Gas

Reviewed Ac

Well Operator's Report of Well Work

Farm name: U.S. Steel Mining Company, LLC

Operator Well No: 8M-4a

Location: Elevation: 1917.21

Quadrangle: PINEVILLE

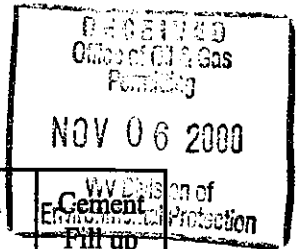
District: CENTER

County: WYOMING

Latitude: 14750 Feet South of 37 Deg. 35 Min. 00 Sec.

Longitude: 9650 Feet West of 81 Deg. 32 Min. 30 Sec.

Company: CDX Gas, LLC
5485 BELTLINE ROAD, SUITE 280
DALLAS, TX 75240-0000



Agent: JOSEPH A. ZUPANICK

Inspector: OFIE HELMICK
Permit Issued: 04/03/00
Well Work commenced: 05/10/00
Well Work completed: 06/10/00
Verbal plugging
Permission granted on:
Rotary x Cable _____ Rig _____
Total depth (ft) 977.45
Fresh water depths (ft) N/A
Salt water depths (ft) N/A
Is coal being mined in the area (Y/N)? Y
Coal depths (ft): 26, 653

Casing & Tubing Size	Used in Drilling	Left in Well	Cement Plug up
9 5/8"	35'	35'	11 Ft ³
7"	908'	908'	136 Ft ³
2 7/8"	369'		

OPEN FLOW DATA

Producing formation Pocahontas No. 3 Seam and Penn Coals Pay zone depth (ft) _____
Gas: Initial open flow N/A Mcf/d Oil: Initial open flow _____ Bbl/d
Final open flow N/A Mcf/d Final open flow _____ Bbl/d
Time of open flow between initial and final tests: _____ hours
Static rock pressure _____ psig (surface pressure) after _____ hours

Second Producing formation _____ Pay zone depth (ft) _____
Gas: Initial open flow N/A Mcf/d Oil: Initial open flow _____ Bbl/d
Final open flow N/A Mcf/d Final open flow _____ Bbl/d
Time of open flow between initial and final tests: _____ hours
Static rock pressure _____ psig (surface pressure) after _____ hours

Note: ON BACK OF THIS FORM, PUT THE FOLLOWING: 1) DETAILS OF PERFORATED INTERVALS, FRACTURING OR STIMULATING, PHYSICAL CHANGE, ETC. 2) THE WELL LOG WHICH IS A SYSTEMATIC DETAILED GEOLOGICAL RECORD OF ALL FORMATIONS, INCLUDING COAL ENCOUNTERED BY THE WELLBORE.

For: CDX Gas, LLC
By: J.A. Zupanick
Date: 10/20/00

NOV 23 2000

WYO 1922 C

Operator: 8M-4a
 API No. 47-109-01922 C
 Location: Pineville

Details of Perforated Intervals, Fracturing or Stimulation, Physical Change, Etc.

Well Log & Geologic Record

Formation	Top	Bottom
Sandstone	0	23
Shale	23	26
Coal	26	28.5
Shale	28.5	33
Sandstone	33	113
Sandy Shale	113	127
Shale	127	143
Sandstone	143	198
Sandy Shale	198	293
Sandstone	293	330
Sandy Shale	330	361
Shale	361	387
Sandstone	387	390
Sandy Shale	390	401
Sandstone	401	512
Shale	512	533
Sandstone	533	651
Shale	651	653
Coal	653	654
Shale	654	669
Sandstone	669	728
Shale	728	746
Sandstone	746	750
Shale	750	863
Sandstone	863	907
Shale	907	913
Sandstone	913	977.45

RECEIVED
 Office of Gas Gas
 Permitting
 NOV 06 2000
 WV Division of
 Environmental Protection